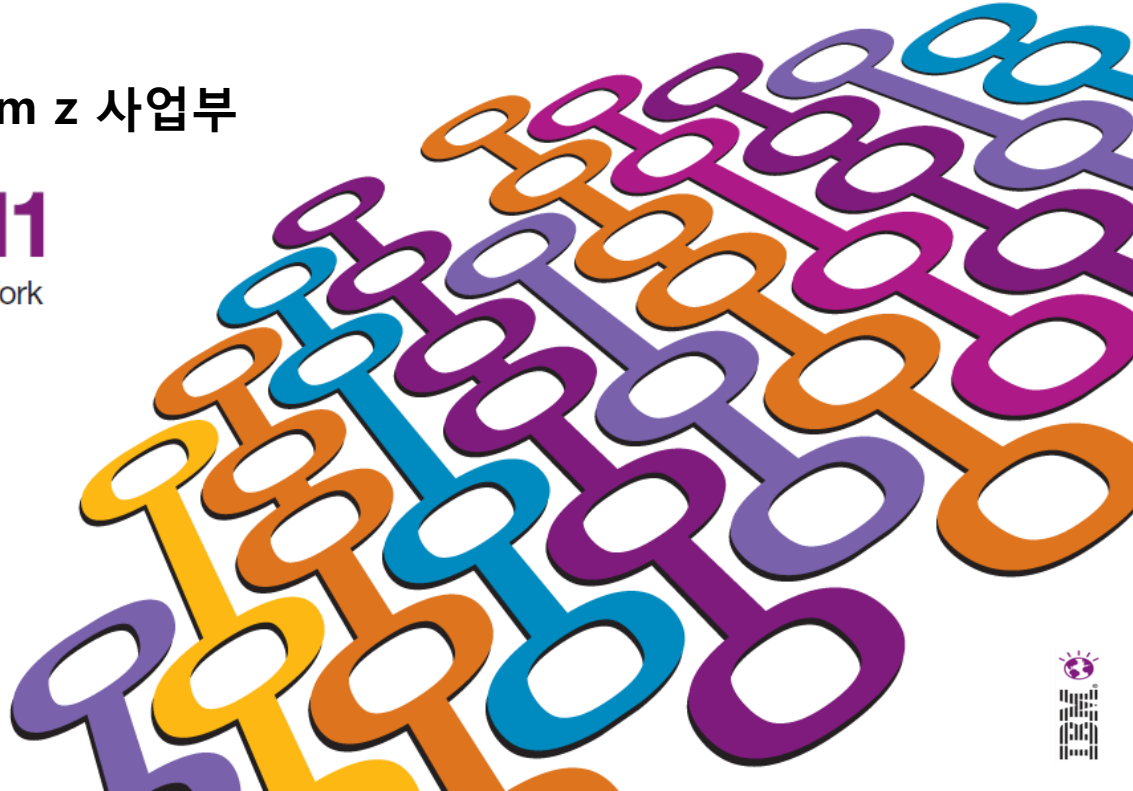


메인프레임 환경에서 애플리케이션 관리 기능과 효율적인 비즈니스 이벤트 처리 방안

정성원 차장
한국IBM 소프트웨어 그룹 System z 사업부

Impact Korea 2011
Changing the Way Business and IT Leaders Work





메인프레임 환경에서

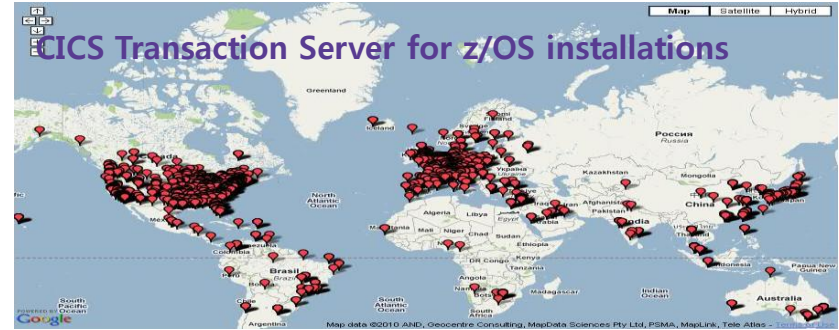
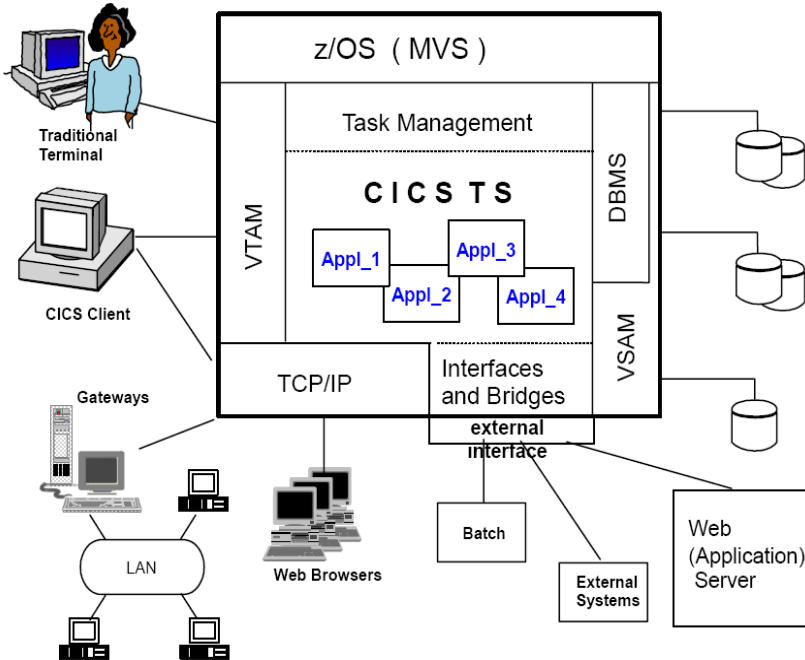
애플리케이션 관리 기능



CICS(Customer Information Control System) 개요



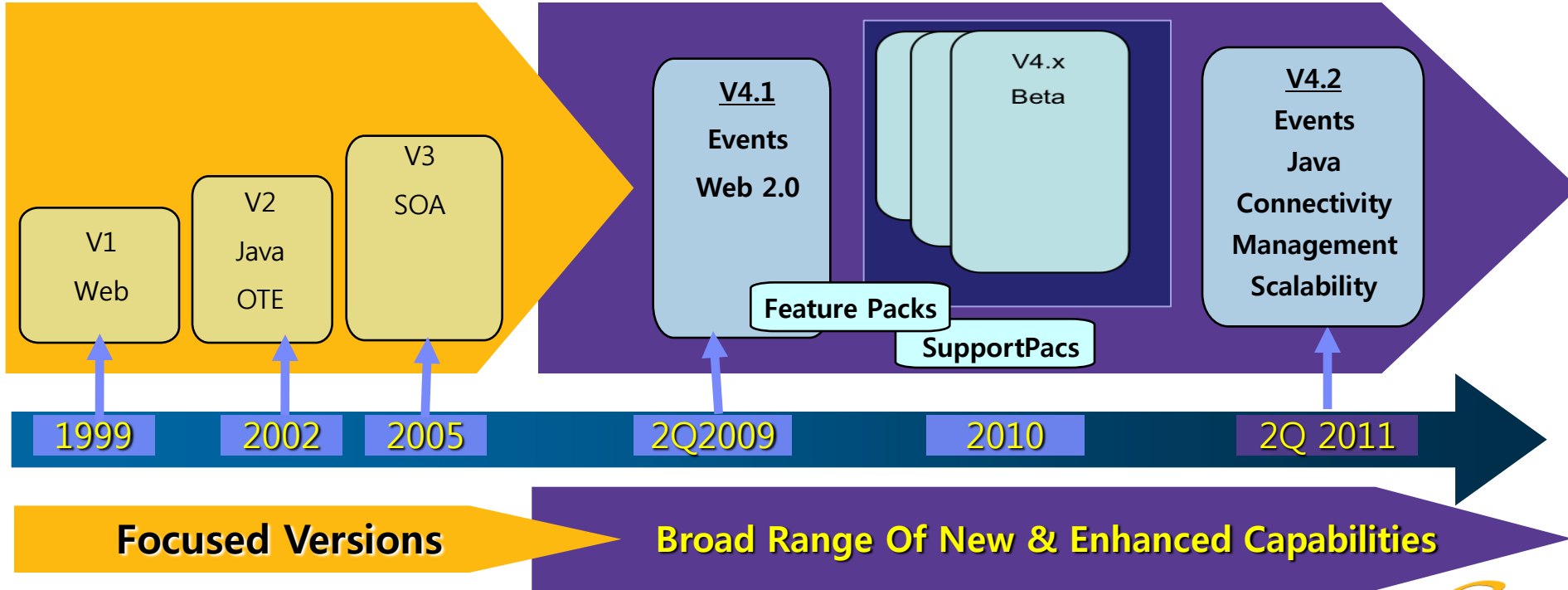
CICS는 메인프레임 서버에서 전통적인 애플리케이션 서버로서 태스크 관리, 애플리케이션 관리, 통신 인터페이스 관리, 데이터 자원 연계 등을 지원합니다





CICS Transaction Server : The Story So Far

40년의 역사를 가진 CICS(Customer Information Control System)의 제품 출시 역사 및 로드맵입니다





CICS TS V4.2 주요 향상 기능

이벤트



- System Events
- Assured Events
- Lifecycle Management

관리



- Transaction Tracking
- Workload Management
- Password Phrases

Java

- 64-bit Applications
- Multithreaded Server
- OSGi Management



확장성

- 64-bit Exploitation
- More Threadsafe
- Optimised Threadsafe



연결



- Axis2 Web Services
- Web Services Offload
- HTTP & IP Extensions

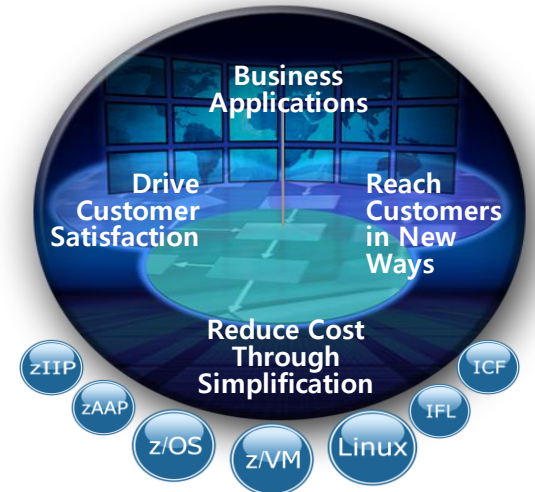
스마트한
트랜잭션 처리 경험



CICS 제품 전략

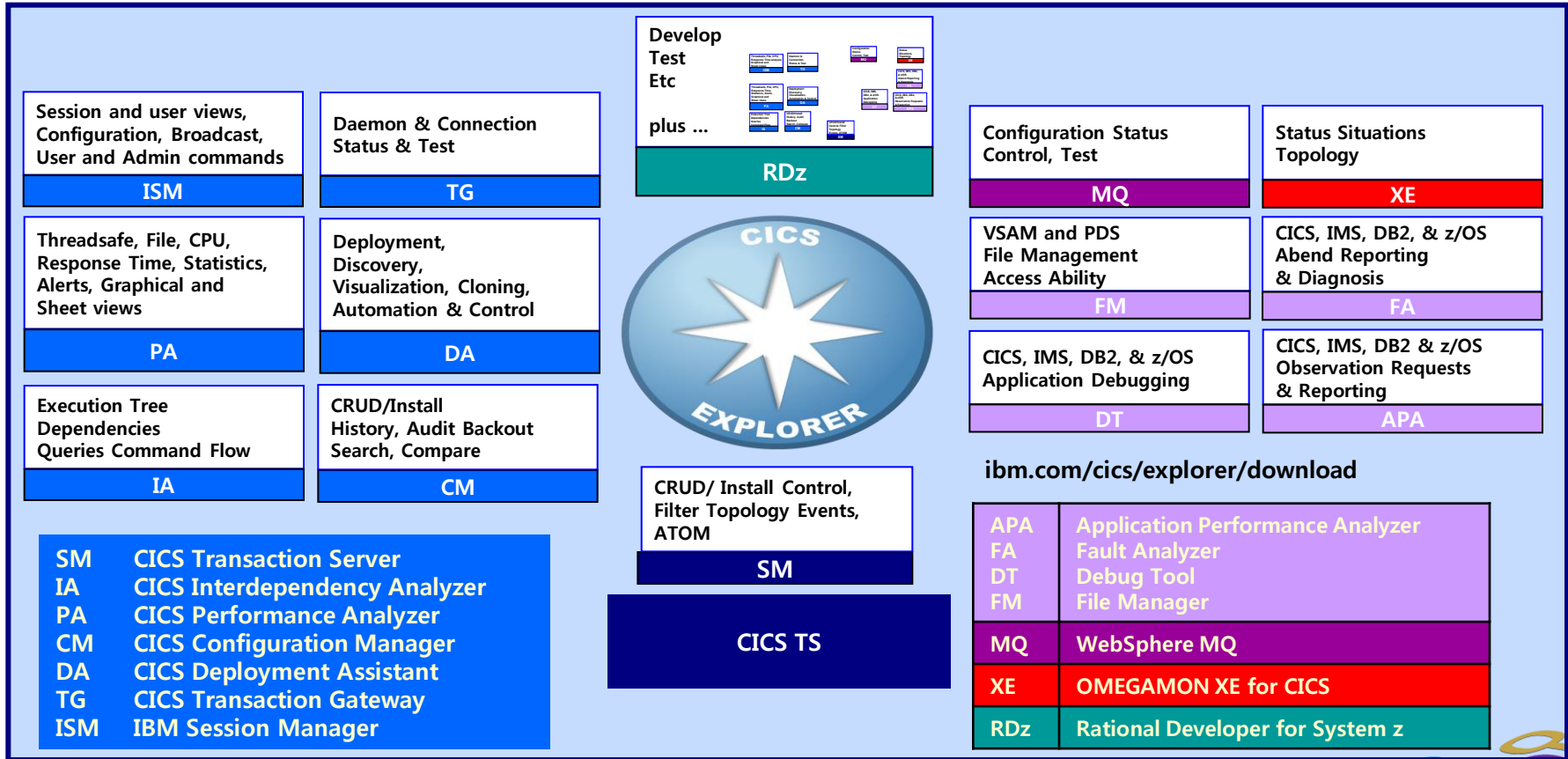


- **Build** an enterprise level transaction processing platform
 - Support traditional CICS values of quality, performance and reliability
 - Support Enterprise Modernization through
 - Mixed programming languages
 - Modern programming architectures (SOA, Web2.0 etc)
- **Simplify** management and reduce skills needs for CICS system programmers and application programmers
- **Encourage** a vibrant partner ecosystem and community
- **Extend** reach to emerging geographies and new customers





IBM CICS Explorer를 통한 개발 환경 통합



IBM CICS Explorer 예시 화면



The screenshot displays the IBM CICS Explorer interface with several tool views open:

- Debug Console:** Shows the execution of a program (SAM1) with a thread (Thread:1) in a Runnable state. The console output shows the execution of a program (ADTOOLS.ADLAB.SYSDEBUG(SAM2)) with various statements and calculations.
- Variables:** A table showing the values of variables in the current context.
- Registers:** A table showing the values of registers in the current context.
- Monitors:** A table showing the values of monitors in the current context.
- Modules:** A table showing the values of modules in the current context.
- Breakpoints:** A list of breakpoints set for the program, including Entry [SAM2] and various statements.
- APA Reports:** A list of reports generated by the system, including S01 - Measurement Profile, S02 - Load Module Attributes, S03 - Load Module Summary, S04 - TCB Summary, and S05 - Memory Usage Timeline.
- Fault Analyzer Analysis:** A detailed view of a fault analysis report for a Data Exception (Abend SOC7) in module SAM2, program SAM2, at source line # 89. The report includes a synopsis and a main report section.

Name	Value
BALANCE-TOTAL	+00000000.00
CUST-ACCT-BALANCE	+00000067.68

Line	Column	Insert	Text
85			MOVE 'CALCULATING BALANCE STATS' TO WS-PROGRAM-ST
86	*		*** Increment Record Count ***
87			ADD +1 TO BALANCE-COUNT
88	*		*** Add this customer's BALANCE to the grand total
89			COMPUTE BALANCE-TOTAL =
90			BALANCE-TOTAL + CUST-ACCT-BALANCE
91	*		*** Calculate Average ***
92			COMPUTE BALANCE-AVERAGE =
93			BALANCE-TOTAL / BALANCE-COUNT
94	*		*** Calculate Minimum ***
95			IF WS-FIRST-TIME-SW = 'Y'
96			MOVE CUST-ACCT-BALANCE TO BALANCE-MIN.
97			IF CUST-ACCT-BALANCE < BALANCE-MIN
98			MOVE CUST-ACCT-BALANCE TO BALANCE-MIN.

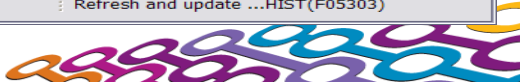
Overall CPU Activity	Percentage	Color
Samples	778	100.0%
CPU Active	728	93.5%
WAIT	40	5.1%
Queued	10	1.2%

Debug Tool Views

Fault Analyzer Analysis

APA Reports

APA Report



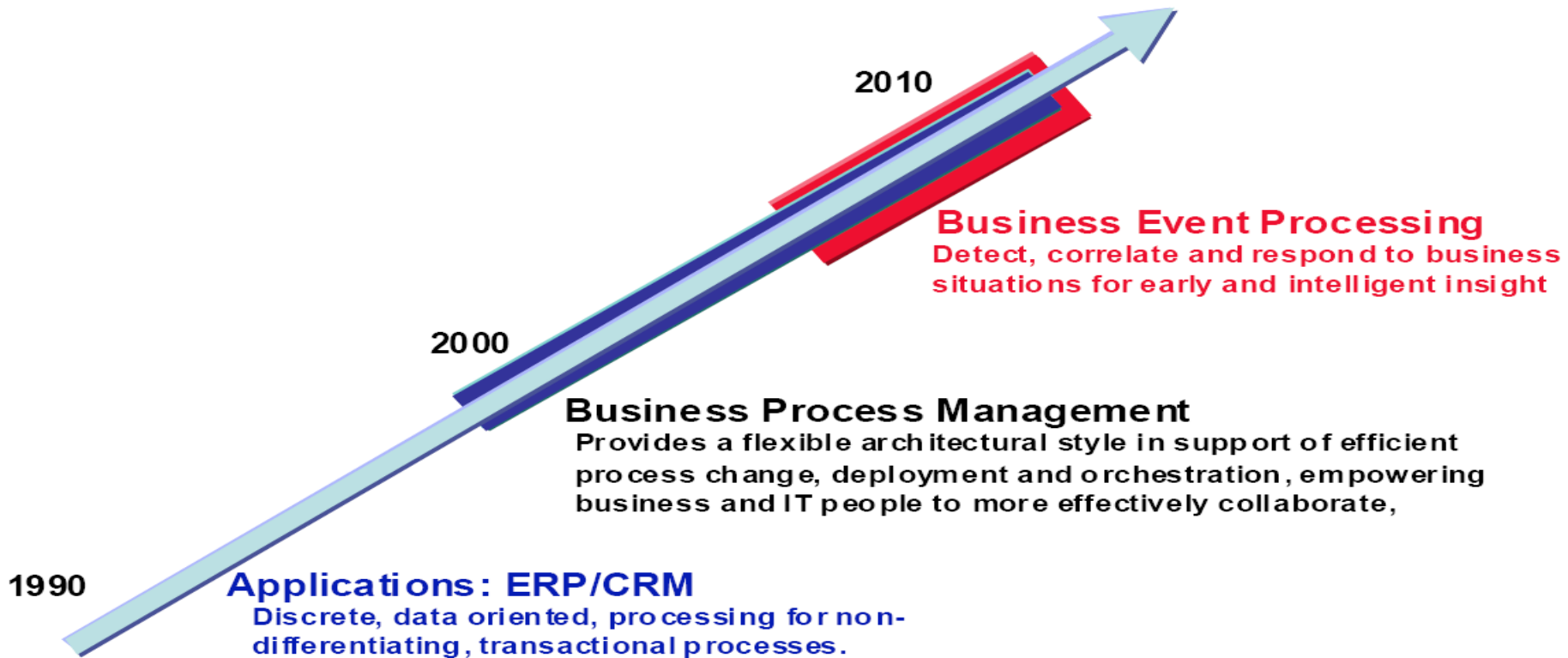


메인프레임 환경에서

효율적인 비즈니스 이벤트 처리 방안



이벤트에 대한 관심 증대



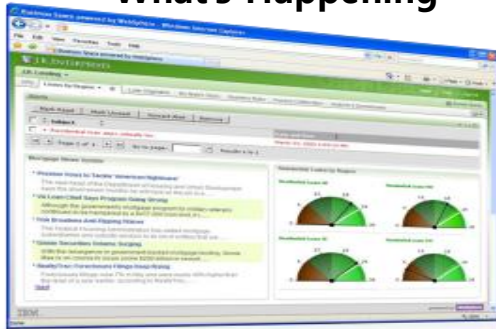


조치 가능한 실시간 통찰력

비즈니스 이벤트 처리를 위한 이벤트 캡처 및 조치

CICS Event Sources

What's Happening



When to Act

Event Sources



Evaluations
Correlations

Take action



What to Do



Know

What's Happening,
When to Act, and
What to Do





비즈니스 이벤트 처리의 정의

“보다 스마트하고 유연한 비즈니스 통찰력 확보”

Event

Pos Purchase



Business Context

2nd purchase in a week and total purchases this year > \$1000



Action: Offer loyalty program membership before customer leaves the store

Event

No meter signal



Business Context

Third consecutive period without signal



Action: Trigger automated troubleshooting process

Event

GPS Signal



Business Context

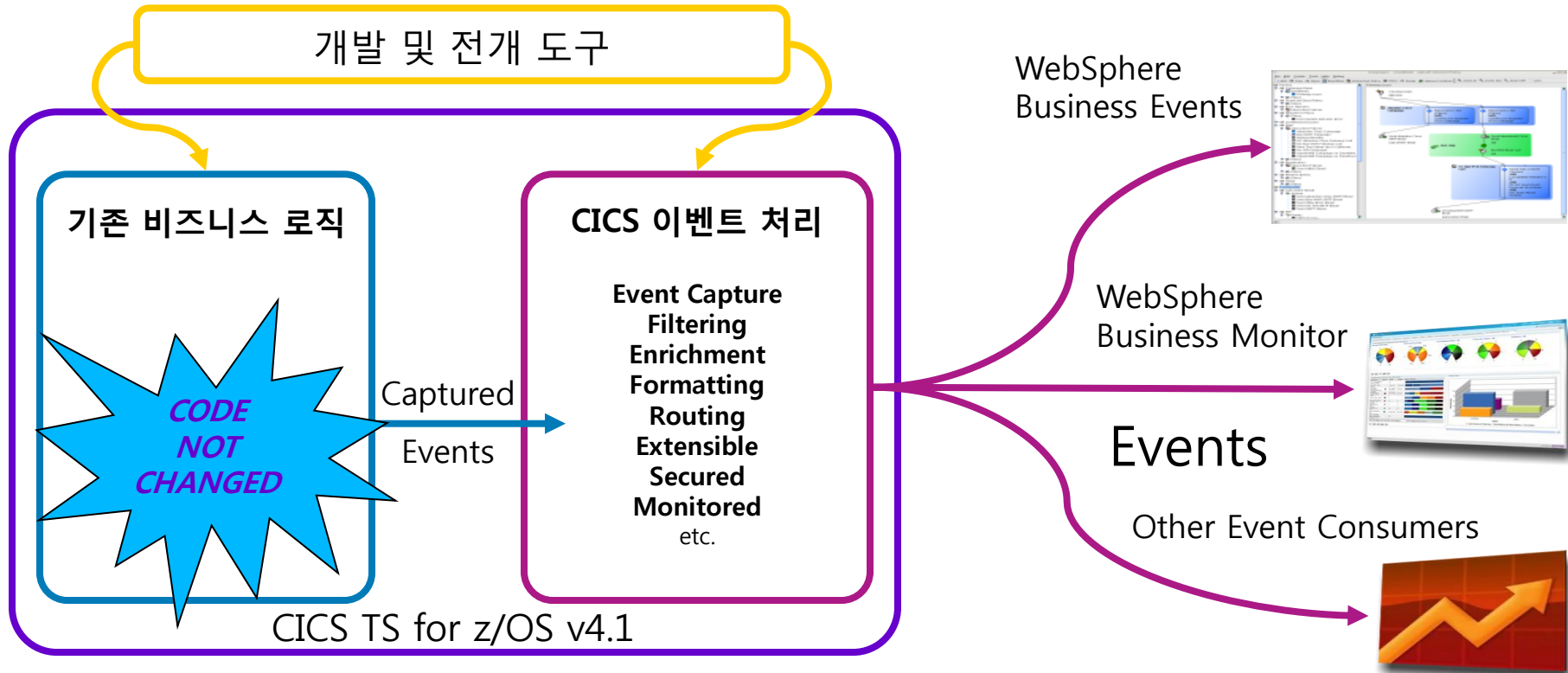
Calculated arrival > 30 min over SLA (Service Level Agreement)



Action: Phone customer to re-arrange delivery



CICS TS V4.1 이벤트 프로세스 지원 개요





CICS V4.2에서의 이벤트 처리 개선 사항

- Event Processing in CICS V4.1
 - Business event processing
 - CICS 4.1 event processing capabilities
 - Concepts and configuration
- Event Processing in CICS V4.2
 - Improved event 'Lifecycle' management:
 - Separate EP adapters
 - EP Search
 - Synchronous Emission Mode and Assured Transactional Events
 - System Events
- More data types supported for filter and capture:
 - Sign leading/trailing Zoned Decimal
 - Hexadecimal floating point
 - Binary floating point
 - Decimal floating point (requires optional hardware facility)
 - Null terminated character
 - Null terminated hex
- HTTP EP adapter performance improvements if using a URIMAP with SOCKETCLOSE set.





비즈니스 이벤트 캡처 포인트 (Business Event Capture Point)

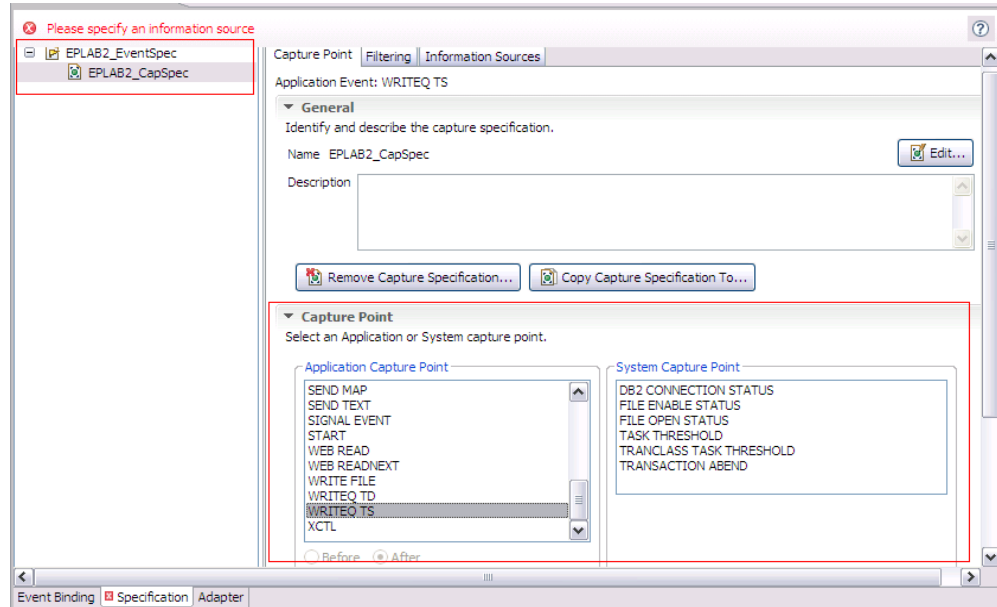
Use the Capture Point tab to describe the capture specification for a named capture point and to select a capture point from a list.

■ Application Capture Point

- LINK PROGRAM
- WRITE FILE
- WRITEQ TS
- 와 같은 CICS 거의 모든 API 지원

■ System Capture Point

- DB2 CONNECTION STATUS
- FILE ENABLE STATUS
- FILE OPEN STATUS
- TASK THRESHOLD
- TRANCLASS TASK THRESHOLD
- TRANSACTION ABEND





비즈니스 이벤트 필터 (Business Event Filters)

There are 3 types of filter that can be used to determine that an event has happened at a particular capture point:

■ Context filters

- Current Transaction
- Current Program
- Current User ID

■ Command option filters

- File name on a WRITE FILE command
- Channel name on LINK PROGRAM

■ Data filters

- Integer at offset 25 in the FROM field on a WRITE FILE command is greater than 500
- Data in a certain container in the current channel

Capture Point Filtering Information Sources

Application Context
Define predicates to filter events.

Context	Operator	Value
Transaction ID	Starts With	FA
Current Program	Equals	FAUPDATE
User ID	Does Not Equal	FAUSER
Response Code	All	Ok

Application Command Options
Define predicates for command options. Predicates marked with * should be specified to maintain CICS performance.

Name	Operator	Value
FILE*	Equals	FACCOUNT

Application Data
Define predicates for application data. Import a language structure and pick an item to specify the data format.

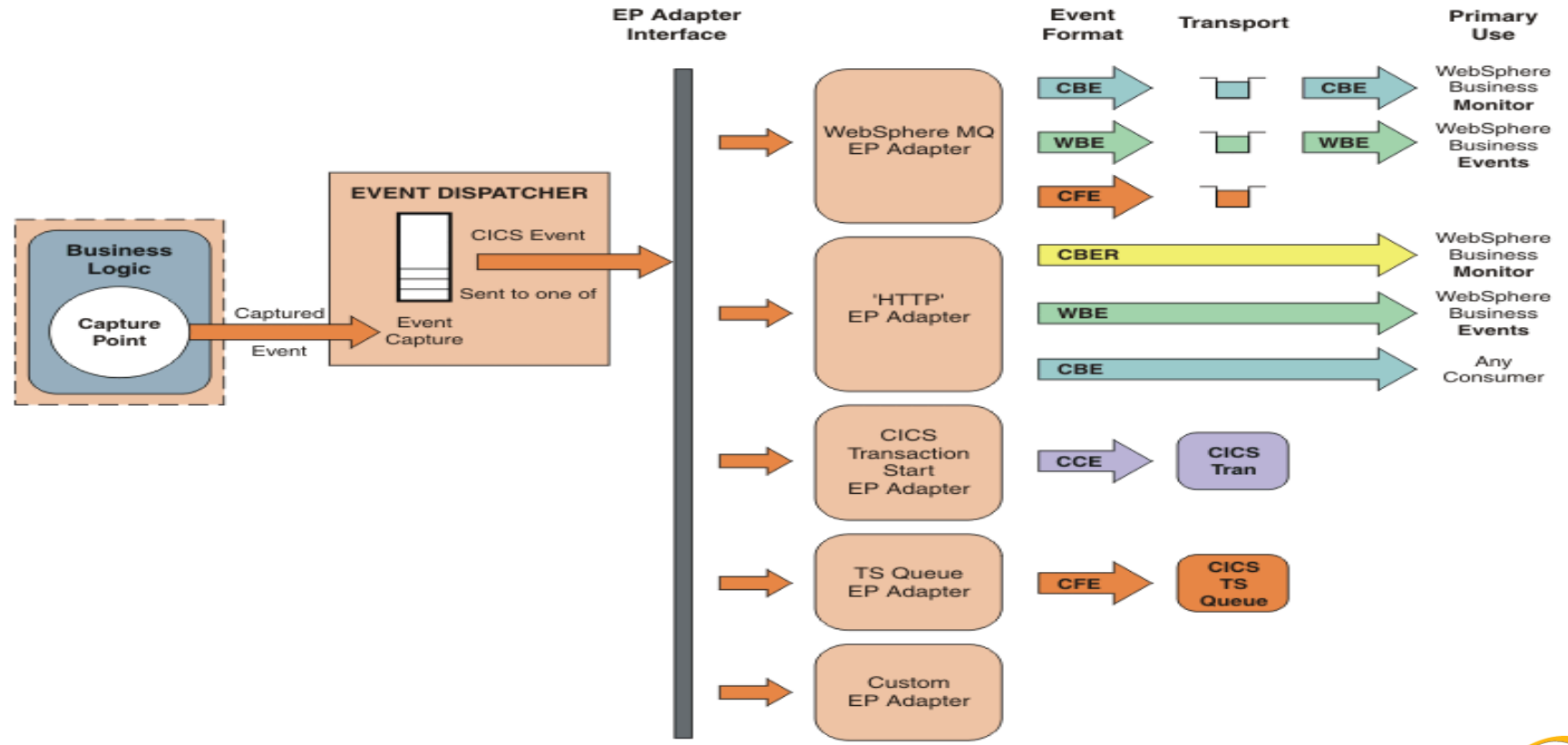
Source	Container	Offset	Length	Operator	Value
FROM		25	4	Greater Than	500

<- Back: Capture Point Next: Information Sources ->



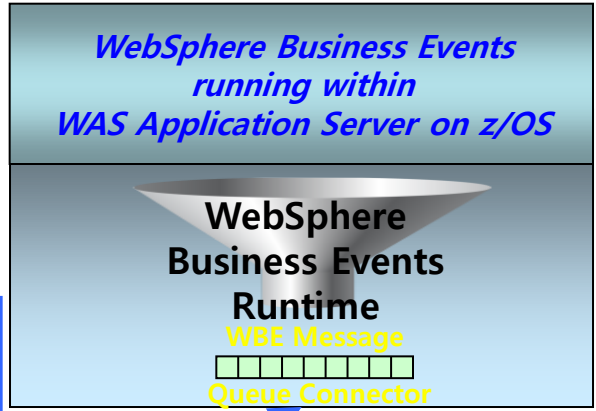
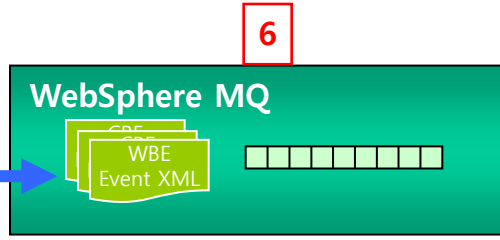
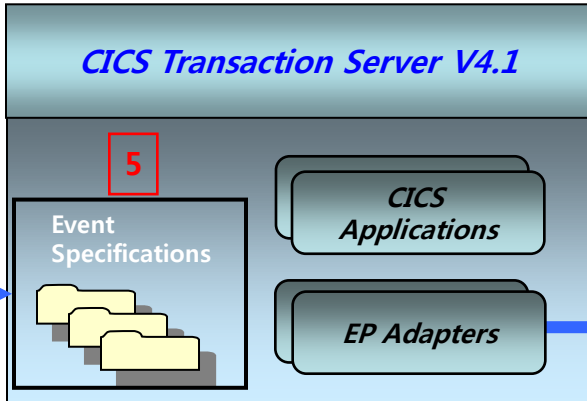


이벤트 배출(Event Emission)



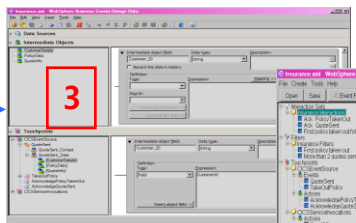
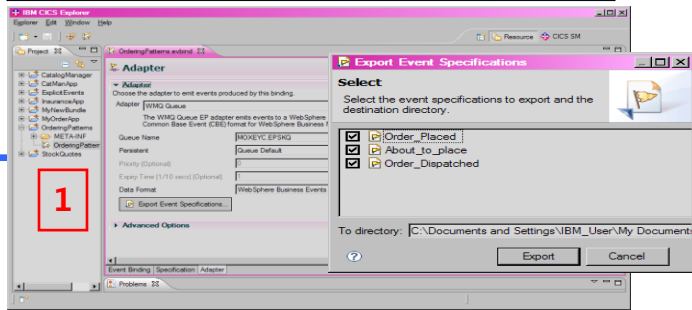


CICS와 WebSphere Business Events 통합

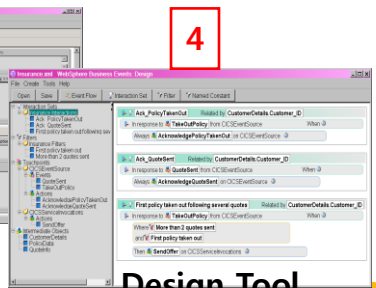


WebSphere MQ via e.g. WAS platform messaging

CICS Event Binding Editor



Design Data Tool

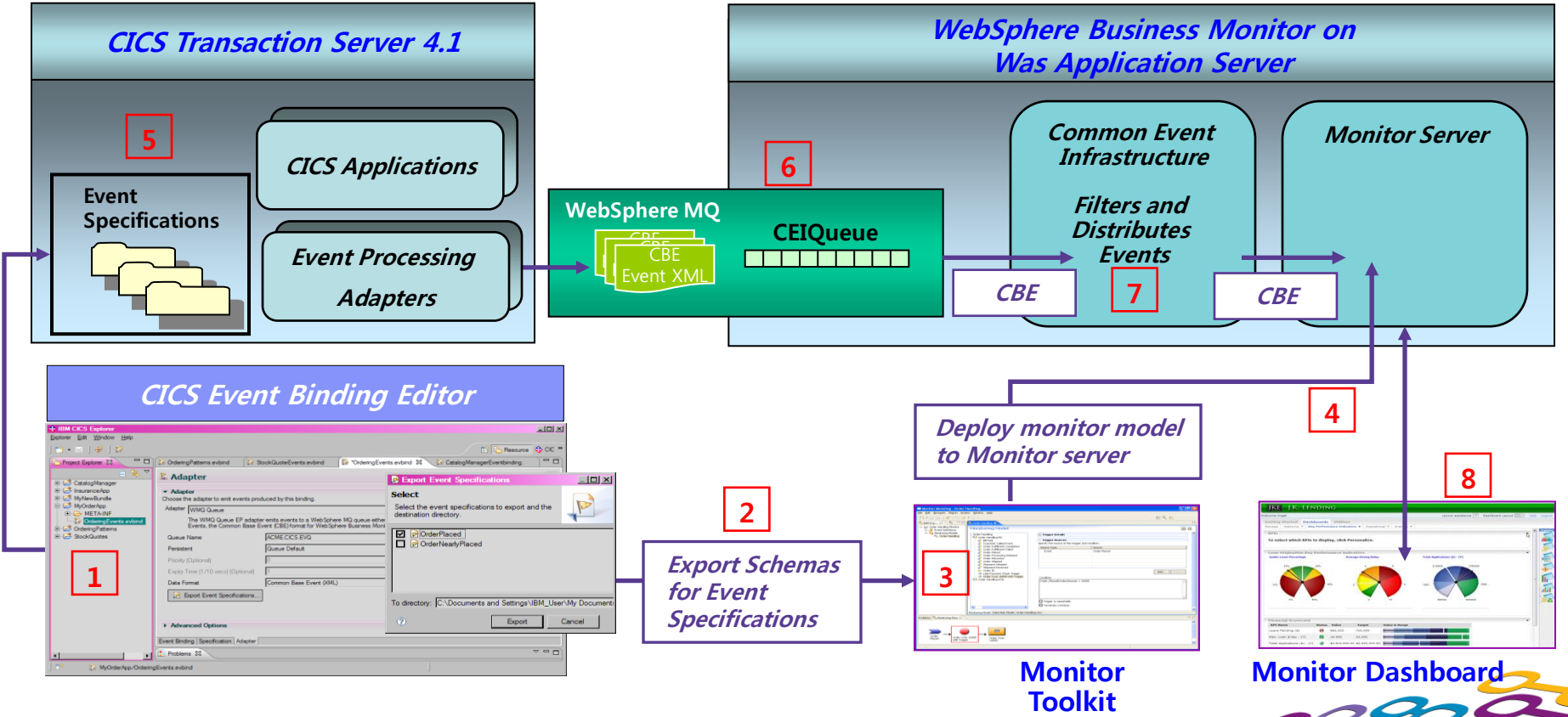


Design Tool





CICS와 모니터 통합



Monitor Toolkit

Monitor Dashboard



I ♥ CICS

감사합니다

