



Rational software

# IBM Rational Application Developer for WebSphere Software Version 6.0

RAD , Rational ClearCase LT  
SOA, J2EE

가 , Java, EJB,

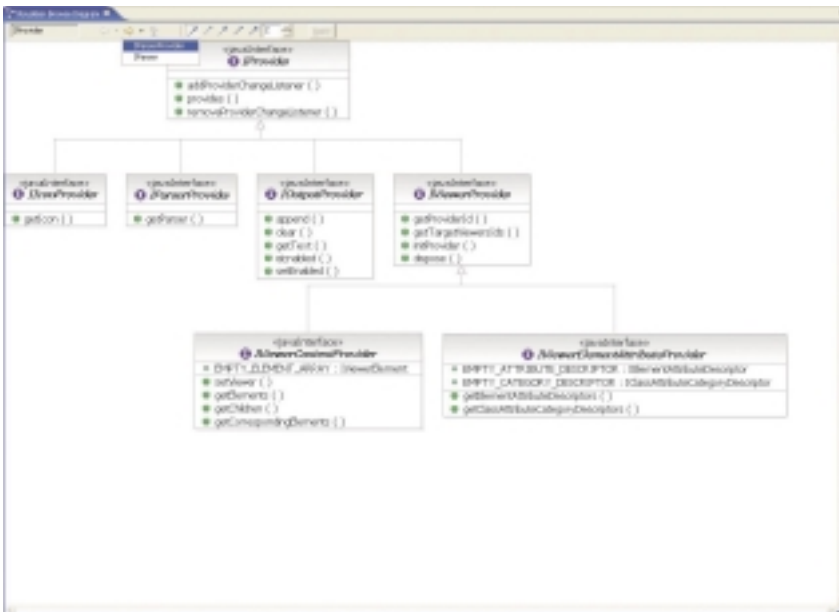
IBM Rational  
Application Developer for WebSphere Software  
, Java, EJB J2EE

UML Crystal Reports

WS-I Eclipse -

SOA

. Application Developer  
, UML  
가  
가



1. UML Visual Editor for Java EJB UML

IBM Rational Application Developer for  
WebSphere Software WebSphere

Rational software

WebSphere software

**J2EE**

Enterprise JavaBeans™, (beans),  
EJB QL(EJB Query Language), CMP(Container -  
Managed Persistence), WAR(Web archive)  
EAR(enterprise archive) J2EE  
Version 1.2 , 1.3 1.4  
가  
IBM  
WebSphere Application Server

WSDL WSIL  
, WSDL  
Java  
WSDL  
WS-I 가  
가  
SOAP

Application Developer , (Bean), EJB  
IBM DB2  
Universal Database™, IBM Informix , Oracle  
Microsoft SQL Server  
JDBC™(Java Database Connectivity)

**Java**

Application Developer Java  
, Java Develop -  
ment Kit version 1.4.2 . Visual Editor  
for Java Abstract Window Toolkit(AWT),  
SWT Swing  
Java GUI  
UI  
GUI

UDDI, Version 2  
XML  
Application Developer XML  
XML ,  
XML , DTD  
(document type definition)

SQL SQL SQL  
SQL  
SQL - to - XML  
XML XSL , DTD , XSD (Extensible  
Stylesheet Definition) , HTML

UML(Unified Modeling Language) Visual Editor for  
Java and EJB UML  
Java

- XML  
- IBM DB2 DB2  
XML  
XML DB2 가  
XSL(Extensible Stylesheet Language)

SQLJ(SQL for Java) SQLJ DB2  
SQLJ  
SQL  
(Object - to - relational mapping)  
(top - down), (meet - in - the -  
middle) (bottom - up support)

**SOA(Service - Oriented**

**Architectures)**

Application Developer , ,  
WS-I 가

HTML  
XML

EJB  
Rational  
Application Developer

(HTML, JSP, JSF )

가 , Java

Model - View - Controller  
Struts 1.1

가  
JavaServer Faces

Service Data Objects

EJB  
JSF Faces

Crystal Reports

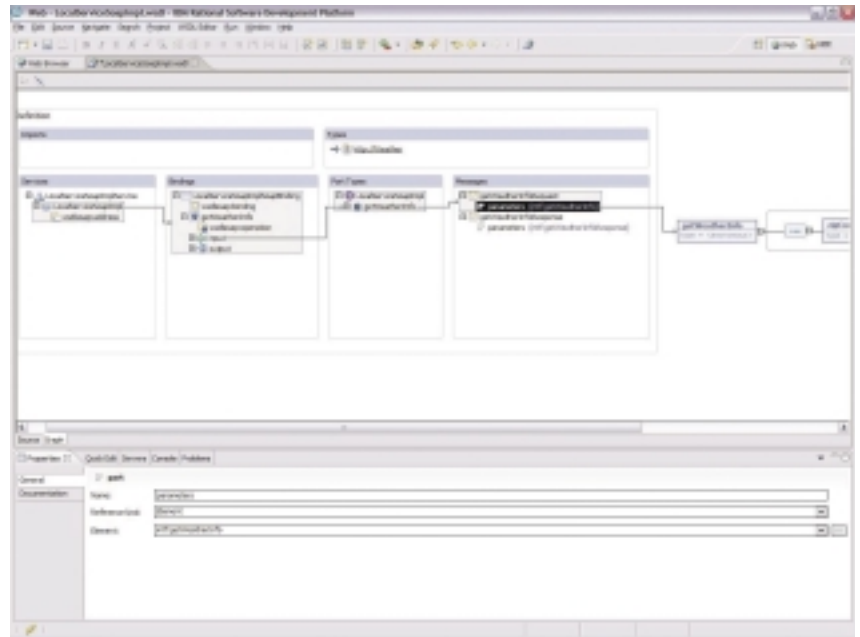
JSF Report

HTML JSP

Web Site Designer

가  
WebArt Designer Animated GIF  
Designer

(original art)



2. JavaBeans EJB  
IBM Rational Application Developer for WebSphere Software  
WSDL , OAP

### 4GL Java

EGL(Enterprise Generation Language) Application Developer  
가 , Java WebSphere Portal

Informix 4GL (4 ) ” . EGL ,

, Application Developer Informix

JavaServer Faces  
JSF

JavaServer Faces

. J2EE

IBM Portlet

JSR 168

. Page Designer

Struts

Web Diagram Editor

Faces

Faces Java Server  
. Portal Designer

archive) WAR  
 EAR  
 Developer EAR  
 (descriptor)

JAR(Java Application  
 Application Server, WebSphere Application Server—  
 Express, WebSphere Portal Apache Tomcat

IBM WebSphere Appli-  
 cation Server, WebSphere Application Server—  
 Express, WebSphere Portal Apache Tomcat

UML(Unified Modeling Language) Visual Editor  
 UML J2EE  
 UML Visual Editor

가  
 Application Developer

IBM Rational  
 Deployment Toolkit for WebLogic Server  
 BEA WebLogic Server Version 6.1, 7.0 8.1

200

J2EE

( Quick Fixes )  
 J2SE/J2EE

Rules Developer

Application Developer IBM Rational ClearCase  
 IBM Rational ClearQuest

Developer Java EJB  
 UML 가  
 가 Java EJB

Editor

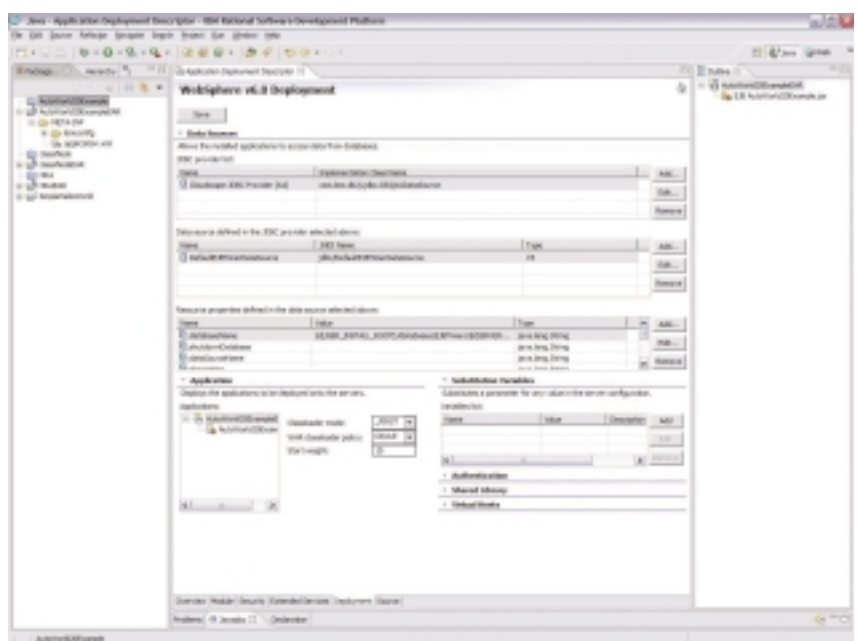
Application Developer

IBM  
 Rational ClearCase LT  
 Concurrent Versions System

가

Application

Developer J2EE  
 (deadlock) (race  
 condition)  
 UML -  
 가  
 가  
 IBM  
 Research  
 entry, exit,  
 try/catch



3. IBM Rational Application Developer for WebSphere Software  
 J2EE

EJB

(bean)  
 Rational Application Developer  
 Eclipse  
 IBM, IBM  
 Eclipse  
 Rational Application Developer가 IBM  
 Software Development Platform  
 Rational Application Developer

가  
 IBM Rational Application Developer for WebSphere  
 Software

Eclipse  
 Eclipse

[www.ibm.com/software/awdtools/developer/  
 application/index.html](http://www.ibm.com/software/awdtools/developer/application/index.html)

Eclipse

가

Eclipse

[www.eclipse.org](http://www.eclipse.org)

**Rational**

Application Developer Eclipse

IBM, IBM Eclipse 가  
 Eclipse

---

**IBM Rational Application Developer for WebSphere Software,  
 Version 6.0**

---

Rational Application Developer가 IBM  
 Software Development Platform  
 Rational Application Developer

Intel Pentium III 800 MHz

: 1024 x 768

768MB RAM , 1GB RAM

: Application Developer

3.5GB

가 ( , )

**Rational**

IBM Rational

. Rational ,

Windows 2000 Professional (SP3 4), Windows 2000 Server (SP3 4),  
 Windows 2000 Advanced Server (SP3 4), Windows XP (SP1 2),  
 Windows Server 2003 Standard, Windows Server 2003 Enterprise

Red Hat Enterprise Linux Workstation, Version 3.0( )

SUSE LINUX Enterprise Server, Version 9( )

IBM Software Development  
 Platform

IBM Software Development

Eclipse

- Windows : Readme 가

가  
 Flash Player, Version 6.0r65

- Linux : Readme 가  
 , Application Developer

가 . Linux  
 Mozilla 1.4가

Flash Player, Version 6.0r69

[www.ibm.com/rational](http://www.ibm.com/rational)

Rational

TCP/IP가

JRE(Java Runtime Environment) Version 1.3

zine([www.ibm.com/developerworks/rational/  
 rationaledge](http://www.ibm.com/developerworks/rational/rationaledge))

WebSphere Application Server - Express (Version 5.0, 5.1 6.0)

WebSphere Application Server (Version 4.0, 5.1 6.0)

Apache Tomcat( )



Copyright IBM Corporation 2004

(135 - 270)

467 - 12

TEL: (02)3781 - 7114  
[www.ibm.com/kr](http://www.ibm.com/kr)

Printed in Korea  
All Rights Reserved

ClearCase, Cloudscape, DB2, DB2 Universal Database,  
e - business , IBM, IBM , Informix, Rational  
WebSphere 가 IBM

Java Java / 가  
Sun Microsystems, Inc. .

Microsoft Windows / 가  
Microsoft Corporation .

<sup>1</sup> WebArt Designer AnimatedGIF Designer  
Linux .