



Agenda

- Background
- Enterprise Portal의 정의
- 도입 사례
 - HSBC
 - ING
 - Bombardier
 - Cisco
 - Audi
- Composite Application이란
- Back-end Application연계 방안
- Demo



Our world is changing and
the demand for progress is clear...

2 Billion

people will
be on the
web by 2011.*



4 Billion

mobile phone
subscribers worldwide
by the end of 2008.*



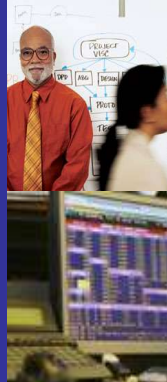
1 Trillion

connected
intelligent devices
in the world



\$650 Billion

in productivity is lost
because of unnecessary
business process
interruptions



85%

of computing
capacity sites
idle



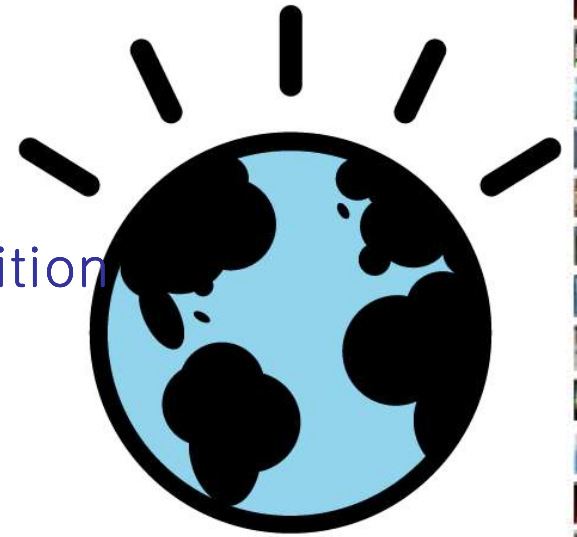
*Sam Palmisano speech, November 12, 2008



How can you capture new opportunities in this new world?

Imagine if...


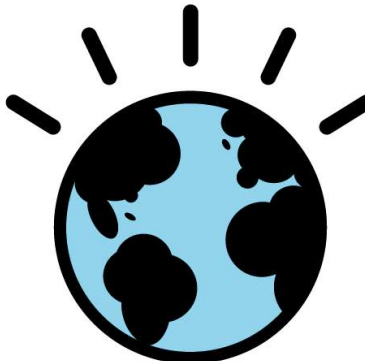
- ...you could **lower operational costs** by 50% and increase effectiveness
- ...you could consistently **beat your competition** to market by a full year
- ...you could **deliver your expertise** anywhere in the world without stepping on an airplane
- ...you could **expand your company's brain power** by a factor of 5 without hiring a single new employee






IBM is at the forefront of managing this innovative change through four interrelated

smarter planet imperatives...



NEW INTELLIGENCE

Data exploding and in silos
I need insight.




GREEN AND BEYOND

Limited resources
I need efficiency.



SMART WORK

New business and process demands
★ I need to work smart.



DYNAMIC INFRASTRUCTURE

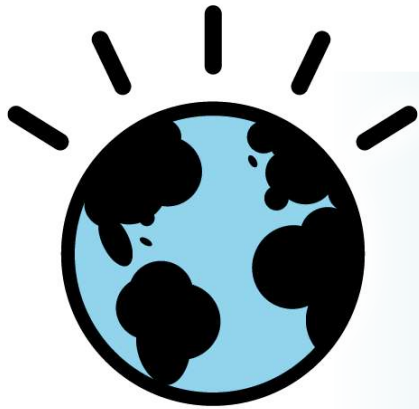
Costly and inflexible infrastructure
I need to respond faster.



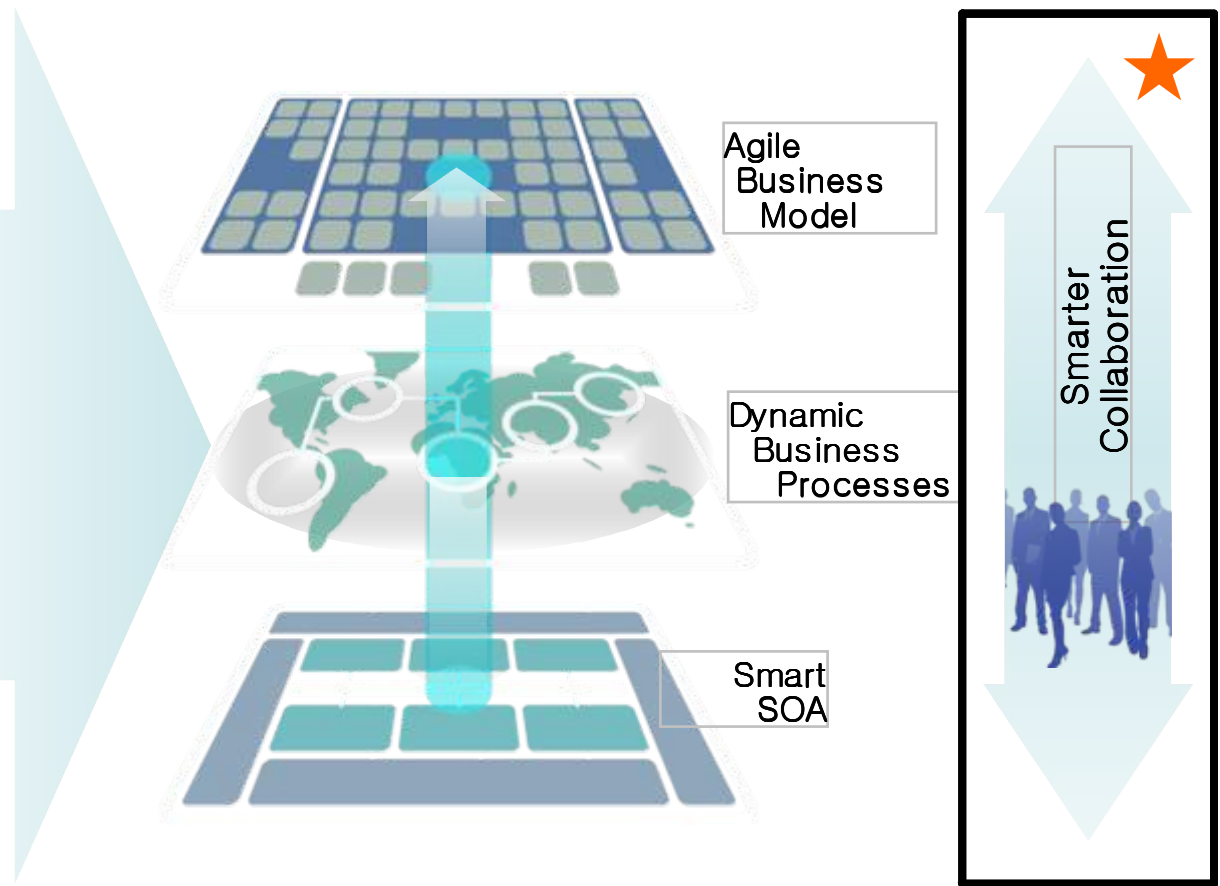
Smart Work is about creating agility across your organization,

Smarter Collaboration

is one of the key components that will help



Smart Work





Enterprise Portal의 정의

Enterprise Portal은 기업 내/외에 존재하는 다양한 자원인 사람, 정보, 애플리케이션, 프로세스를 개인화된 단일 접점으로 제공하여 업무 생산성 및 효율성 제고시켜 궁극적으로 기업의 새로운 가치를 창출하기 위한 솔루션입니다

Enterprise Portal의 정의

B2E Portals

직원들의 생산성 향상과 빠른 의사결정의 수단

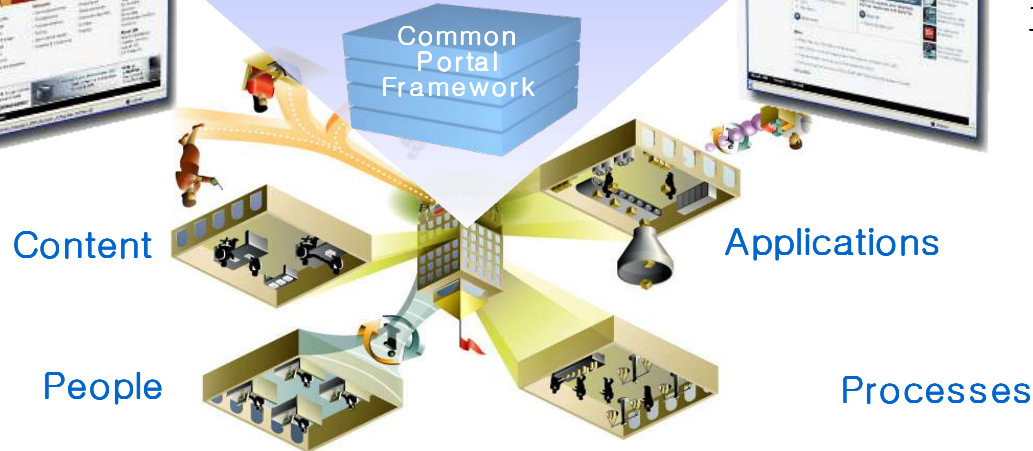


B2C Portals
고객 충성도 상승과 Cross-sell 수익의 증대 효과



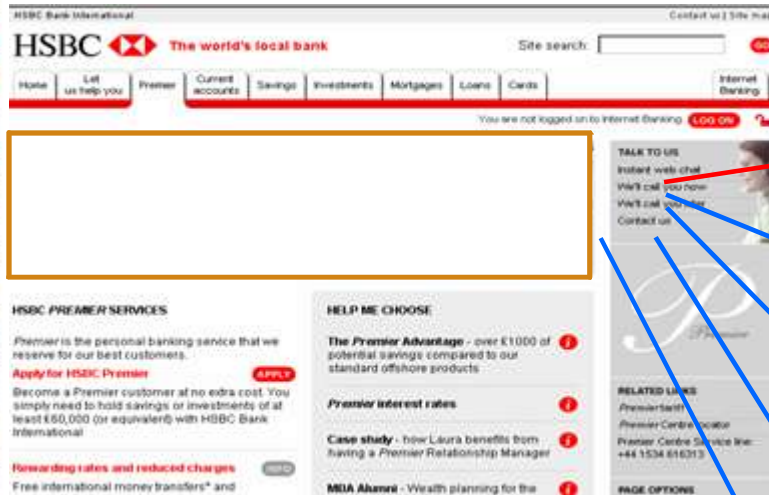
B2B Portals

비즈니스 프로세스와 연계를 통한 파트너 relationship 상승 효과






Portal Example: HSBC – Global Customer Service




- 50 Million Customers world-wide
- Personalized content based on account level and usage
- Regionalized content delivered to over 40 countries/languages
- Scalability to meet increased demand
 - > 50K concurrent user capacity at one site alone
- Portal supports lines of business:
 - Personal Financial Services
 - Corporate Banking
 - Payments
 - Insurance
 - Premier
 - Stock Trading


Under Pressure?
With your own Relationship Manager, sorting out your finances is fast and convenient. So you can make the most of your free time
▶ Learn more




Mr Parsons, you're important to us
so we'd like to offer you your own Relationship Manager
▶ Learn more about Premier




if you upgrade to Premier
you'll benefit from the advice and insight of your own Relationship Manager
▶ Learn more about Premier



as one of our best customers
are you making the most of the rewards available to you?
▶ Show me



Mr Fray,
we're developing new online services exclusively for Premier customers, so we'd really appreciate your feedback
▶ Go



<http://www.hsbc.com>

ING – Transforming Consumer Internet Banking Presence



- In January 2009 "ING Bank Nederland" and "Postbank" merged into "ING Bank Nederland". Their internet banking environments will be converted into a new single B2C website in the Netherlands serving more than 8 million customers
- Postbank previously had encountered a lot of outages of their internet banking environment. IBM showed them that their problems could be solved with the highly scalable Websphere Portal
- Solution Components
 - Websphere Portal Extend
 - Workplace Web Content Management
 - Lotus Forms
- The goal of the Bank is to service 80% of their customers banking needs online





BOMBARDIER



Customer



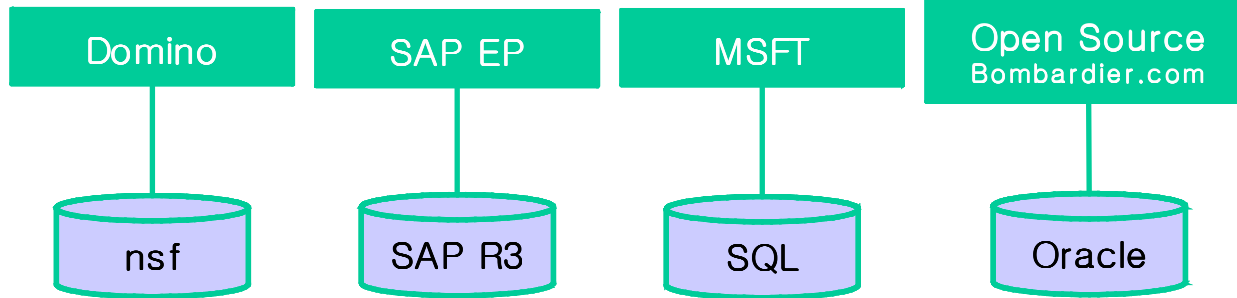
Supplier / Partners



Employees



Public / Investors / Media



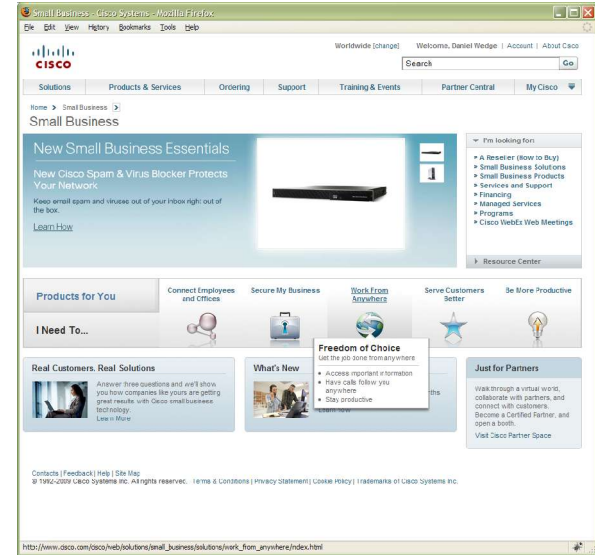
Need for a Portal Strategy:

- Fragmented service offering
- External / internal facing platform coupled to data source & business applications
- High maintenance costs and diverse skill sets required
- Brittle and difficult to meet business integration needs



Cisco Systems

- Open Source is no longer an option
 - Industrial strength Portals are not yet a commodity
- WebSphere Portal
 - IBM is a trusted partner
 - Deep engagement with IBM lab leaders for technical needs
 - The most robust offering by a wide margin
- Integration
 - Comes with Web Content Management System out of the box but integrates with Cisco's chosen Enterprise Content Management system
 - Credential vault supports the multiple user identities that exist across enterprise applications
 - Best standards implementation (WSRP, JSR 286)
- Technical resources

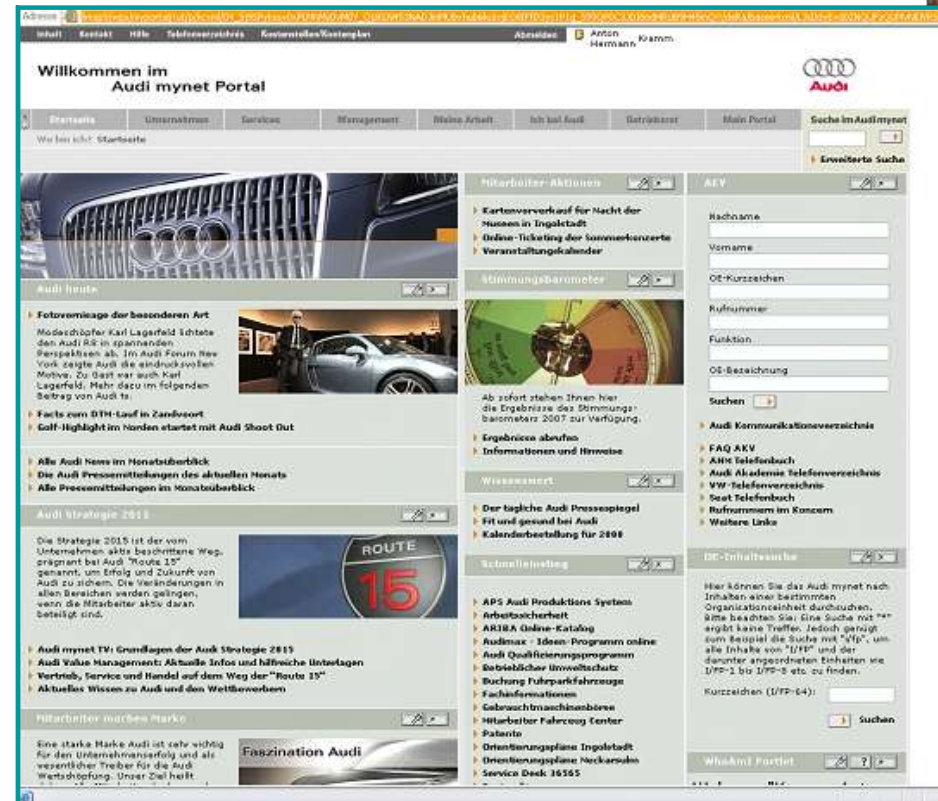




Audi MyNet Portal

Audi MyNet Portal

- A central location for all production sites and international subsidiaries
 - Offers WW employees single-sign on, browser-based access to services and information
 - Personalized desktop spans more than 1,000 business applications
- A convenient tool for employees to manage and customize individual work processes
 - Role based procedures and processes delivered through portlets that provide information relevant to each user
 - A central platform lets work and business processes be handled without re-entering data or switching between tools
- Reduction of administrative processes
 - Reduced the number of HTML pages in the intranet from 240,000 to 40,000 with no loss of content
 - Decreased the number of applications by introducing standard content and document management solutions





WebSphere Portal의 서비스 레이어

WebSphere Portal은 4가지 서비스로 구성된 포털을 위한 통합 프레임워크를 제공하여 안정되면서도 유연성 있는 포털 서비스를 통해 기업 내 향상된 협업 환경을 제공합니다.

통합 프레임워크 서비스 구성도

1. 프레임워크 서비스

- ◆ 프레임워크를 이용한 안정된 포털 애플리케이션
- ◆ 개인화 및 커스터마이징의 용이성
- ◆ 사용자 역할 별 맞춤형 서비스 제공

2. 통합 서비스

- ◆ 프로세스, 콘텐츠, 애플리케이션 접근의 용이성
- ◆ Wizard 방식의 개발 툴 및 Dashboard 툴 제공

3. 콘텐츠 서비스

- ◆ 콘텐츠와 자원의 생성, 관리, 검색의 용이성
- ◆ 콘텐츠 Dashboard 기능
- ◆ Office와의 연동으로 생산성 향상
- ◆ 문서관리(Documentum) 시스템 연계

4. 협업 서비스

- ◆ 역할기반의 포털 기능 제공
- ◆ 협업기능을 위한 다양한 템플릿 구성
- ◆ 개방형 웹2.0 기반의 협업 인프라 제공
- ◆ Social Network를 위한 프레임워크 제공

사용자 별 맞춤 서비스
역할 별 가상포털 제공
안정적 시스템 운영



프레임워크 서비스

포틀릿	사용자 UI	개인화	보안	관리
-----	--------	-----	----	----

Legacy 시스템 통합 통합검색
Wizard방식 개발 툴



통합 서비스

애플리케이션 통합	웹 서비스	개발 툴	콘텐츠 통합
-----------	-------	------	--------

콘텐츠 작성 툴
Wizard 방식 개발 툴
Office 연동
문서관리 시스템 연계



콘텐츠 서비스

콘텐츠 저장소	개발 툴	생산성 도구 (Office연동)	문서관리 시스템 연계
---------	------	-------------------	-------------

목적별 협업 기능
템플릿 구성
웹2.0 기반 기술
커뮤니티 활동



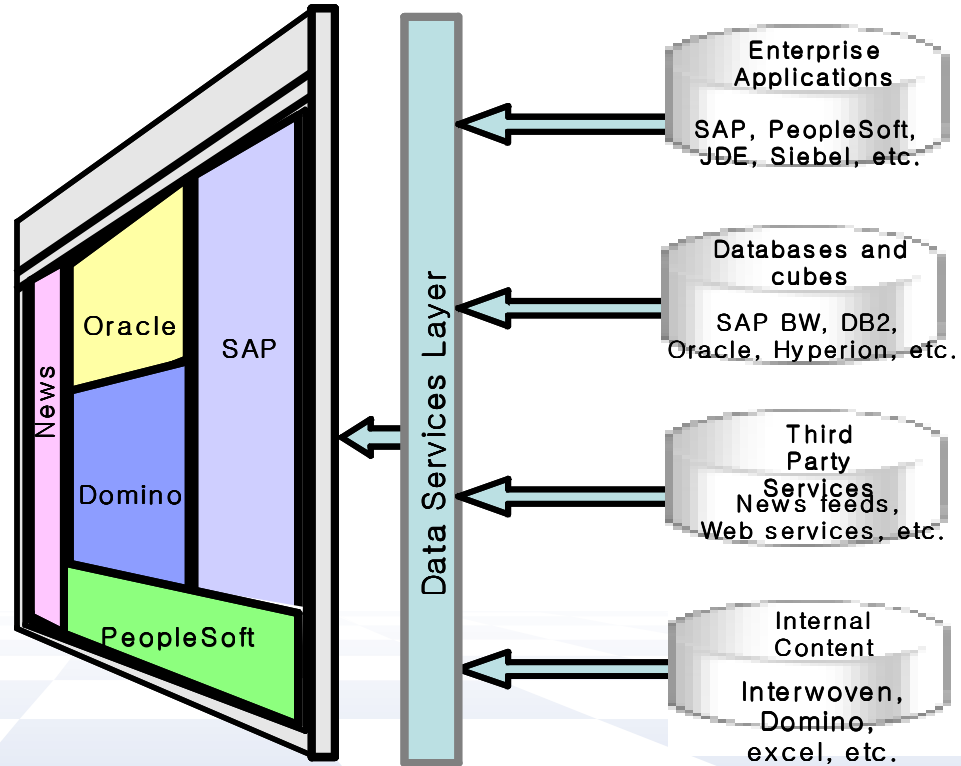
협업 서비스

메일/일정/문서함	템플릿 구성	AJAX/RSS/Alert	커뮤니티/공시사항/게시판
-----------	--------	----------------	---------------



Composite Application이란

Composite Application이란 기업 내 존재하고 있는 여러 Application을 엮어 하나의 새로운 application을 만들어 주는 것을 의미합니다



주요 장점

- ◆ 존재하는 개발 자원에 대한 프로젝트별 재활용 가능
- ◆ Back end Connection에 대한 자동화
- ◆ 새로운 어플리케이션의 빠른 생성
- ◆ 어플리케이션 유연성 증가

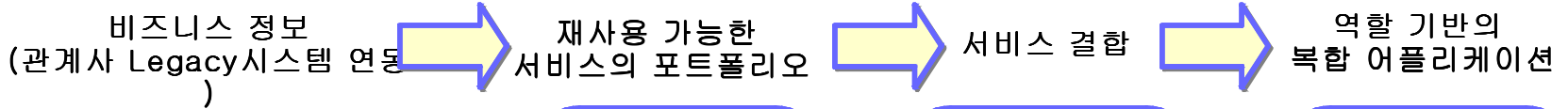
컴포넌트화된 기술 요소별, 솔루션 패키지별 Connector 제공

(JDBC, WebService, SAP, PeopleSoft, Hyperion, Siebel, Oracle, EBS 등)



Composite Application이란

다양한 관계사 Legacy로 부터 생성된 Dashboard 포틀릿은 데이터 서비스에 대한 종속성을 제거함으로써 사용자 권한별, 직무별 재사용 가능한 서비스 포트폴리오로 사용될 수 있습니다. 각 Dashboard 포틀릿은 관계사별 공유 또는 특화된 정보로 결합되어 활용될 수 있습니다.



기간제 어플리케이션

- ERP
- CRM
- SCM
- Custom

정보

- OLAP / Cubes
- Warehouse / Datamart
- Databases

BPM

- Processes
- Monitors

협업 연동

- Email
- Team rooms
- Instant Mess.

기타

- Domino
- Spreadsheets
- Documents

서비스 레이어 (loose coupling to data services)

포틀릿으로 생성



Order	Employee Name	Status
▼	Employee Id	Index
▲	Form Of address	Index
▲	First Name	Index
▲	Last Name	Index
▼	Hidden Name	Index

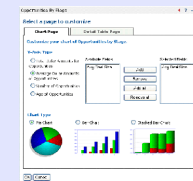
Order	Employee Name	Status
▼	Employee Id	Index
▲	Form Of address	Index
▲	First Name	Index
▲	Last Name	Index
▼	Hidden Name	Index



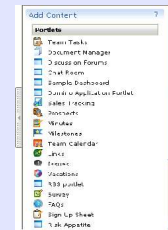
Order	Employee Name	Status
▼	Employee Id	Index
▲	Form Of address	Index
▲	First Name	Index
▲	Last Name	Index
▼	Hidden Name	Index



복합 어플리케이션



커스터마이징 지원



Drag & Drop 지원



롤 엔진 기반 역할 설정



이종 포틀릿 간의 통신

역할 기반의 복합 어플리케이션

직원 셀프 서비스

스코어 카드 및 대시보드

고객/파트너 셀프 서비스



Backend System 연계 방안

IBM 그룹 Portal 솔루션은 SAP 시스템과의 협업 연동을 위해 다양한 방법을 제공합니다. 개발자가 SAP 포틀릿을 만들기 위한 개발환경 및 Mediator를 제공하며, 또한 Business 사용자가 쉽고 간단하게 SAP 포틀릿을 만들기 위한 WPAI를 제공합니다.

1. J2EE 클라이언트

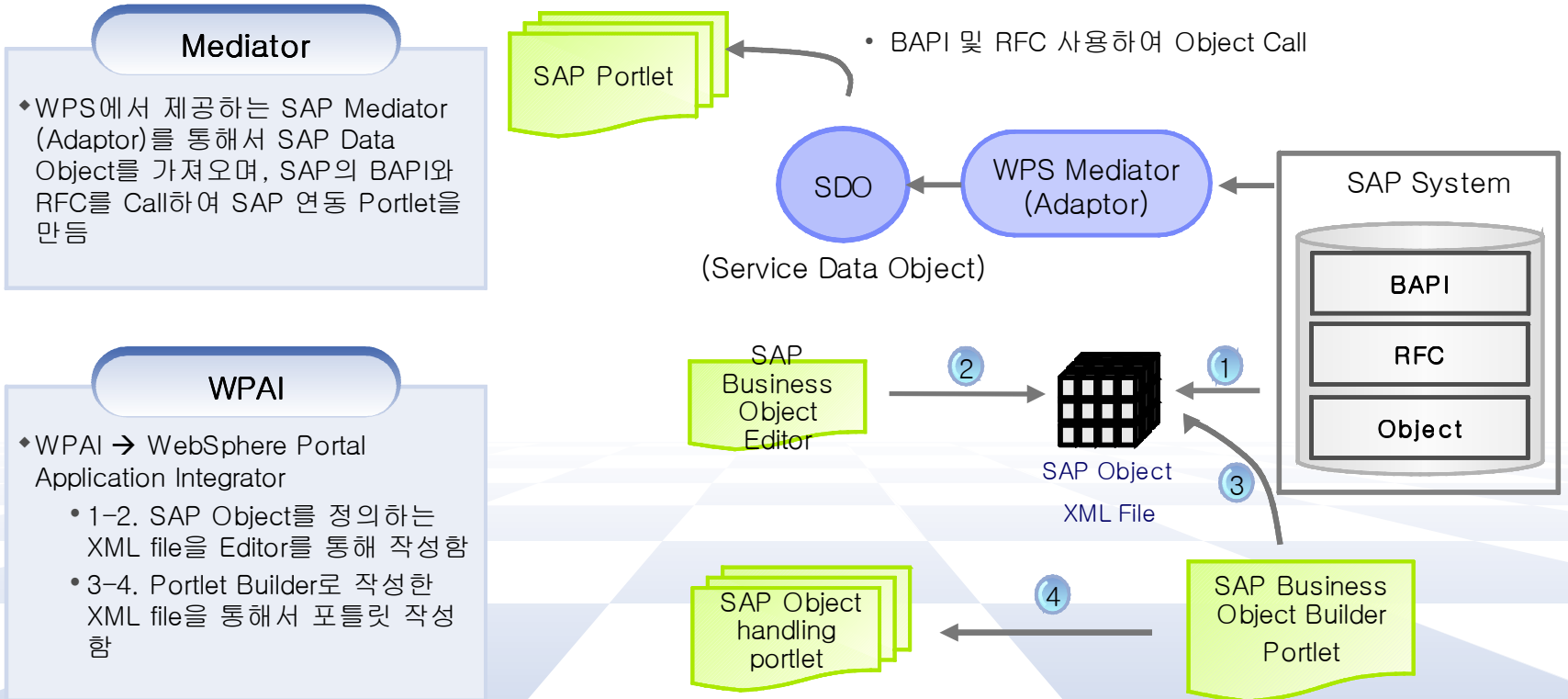
2. NET 유틸

3. Web Service

4. JMS/JCA

5. Domino

6. SAP



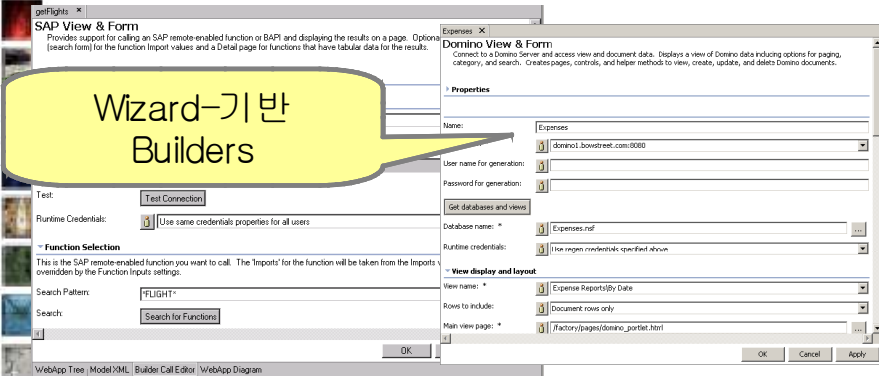


DEMO



코딩 없이 Multi-page, 복잡한 Portlet 개발

어떠한 Java Code 없이 모든 level의 개발자가 빠른 시간 안에 다양한 페이지의 복잡한 portlet(search, create, update, and delete)을 개발할 수 있습니다.



Wizard-기반 Builders

```

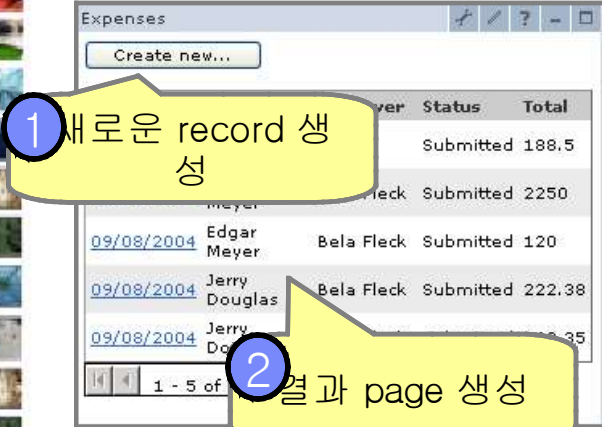
* Generated Method [_pageDispatcher]
* Generated by builder call [bc21]
*/
public void _pageDispatcher(WebAppAccess webAppAccess)
{
    com.bowstreet.webapp.JSPSupport.dispatch(webAppAccess);
}

/**
* Generated Method [getFlights]
* Generated by builder call [bc21]
*/
public String getFlights(int position)
{
    PagingAssistant asst =
    ("getFlights_Paging");
    String img = button + position;
    if ((button.equals("First") || button.equals("Prev")) && !asst.hasPreviousPage())
        img = button + "Disabled";
    if ((button.equals("Next") || button.equals("Last")) && !asst.hasNextPage())
        img = button + "Disabled";
    return webAppAccess.getVisiblePageHtmlFromPageFlights_PagingButtonImages(img);
}

```

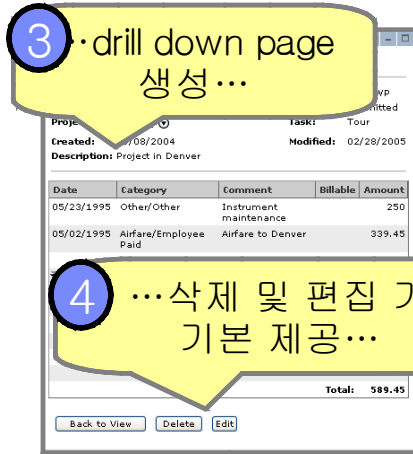
자동으로 생성되는 J2EE 호환 코드

Multi-page Portlet



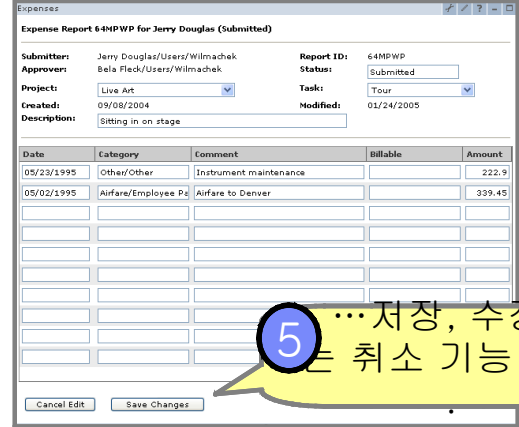
1 새로운 record 생성

2 결과 page 생성



3 drill down page 생성...

4 ...삭제 및 편집 기능 기본 제공...



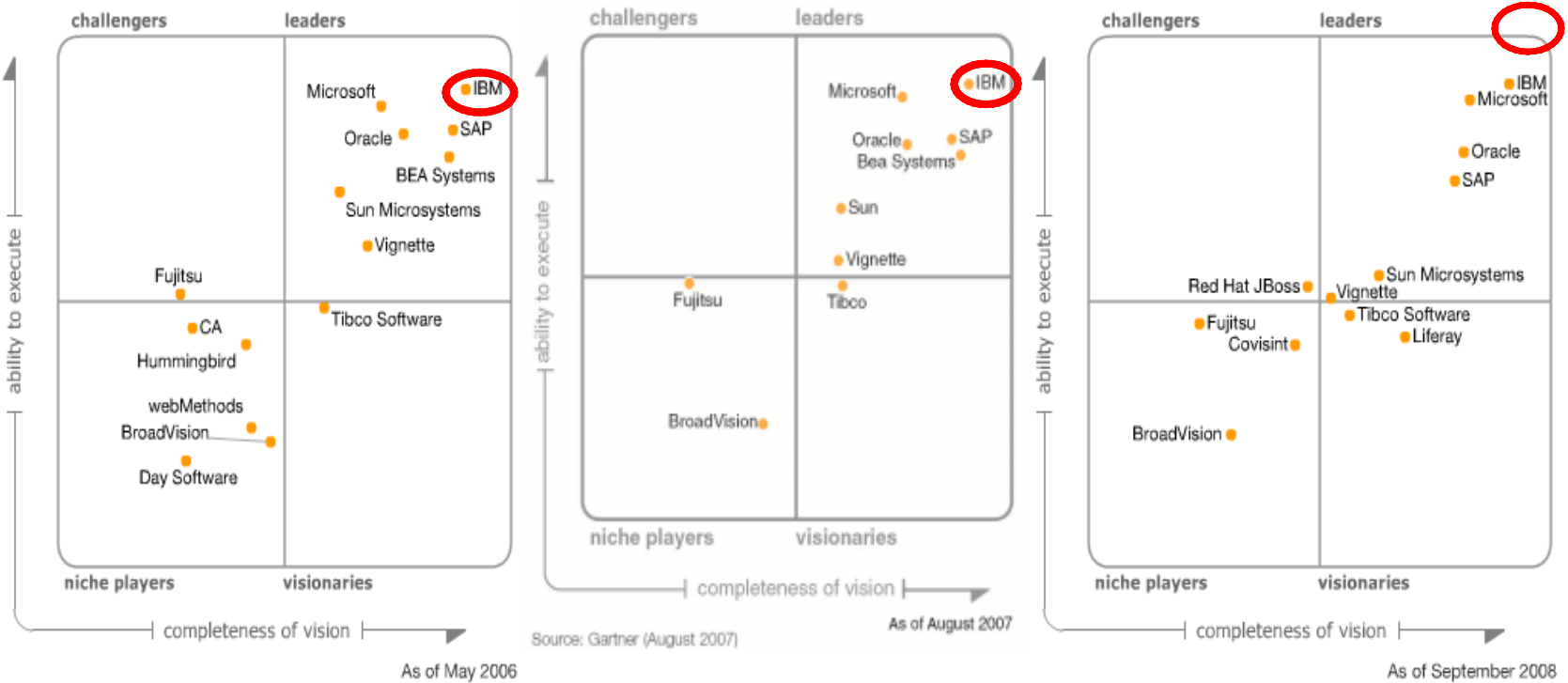
5 ...저장, 수정 또는 취소 기능 제공

수정, 추가, 삭제 등 기본 builder를 사용하여 별도 코딩 없이 구현 가능



Enterprise Portal 리더 – IBM WebSphere Portal

포탈의 향후 비전을 가늠해 볼 수 있는, 유명 조사 기관의 자료에서도 IBM이 제시하는 포탈 솔루션이 기업의 차세대 업무환경으로서 최상의 위치를 차지하고 있습니다. (비전 완성도와 실행 능력 대비 최상위에 위치함)



연도 별 Portal Vendor 조사자료, 가트너 그룹(2006,2007,2008) : Magic Quadrant for Horizontal Portal Products



WebSphere Portal: 5100+ 고객 보유

Financial Services	Communications	Industrial	Public Sector	Distribution