

021 Novell® GroupWise® 6.5 For Linux

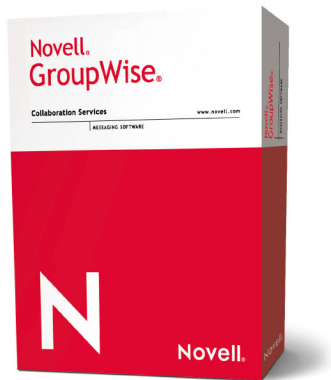
Scott C. Villinski
svillinski@novell.com
Corporate Technology Strategist



Novell®



Agenda



Introduction to GroupWise

GroupWise's Unique Value

GroupWise 6.5 for Linux Features

Combining GroupWise 6.5 for Linux
with Ximian Evolution

Demonstration



Novell® Strategy: Caveats for Meeting Evolving Needs



- Users resist the **introduction of new habitats**
- Users expect **access and full function anywhere**, regardless of the habitat they choose
- Networked applications are collaboration applications
“**it’s not just email**”
- Collaboration must be **contextual**
- **Partners** add critical value to out-of-the-box solutions
- **Open computing** must be embraced
- **Security** should never be a question
- Low **TCO** and high **ROI** are expected



Introducing GroupWise



Email



Calendaring/scheduling



Address books



Contact management



Secure instant messaging



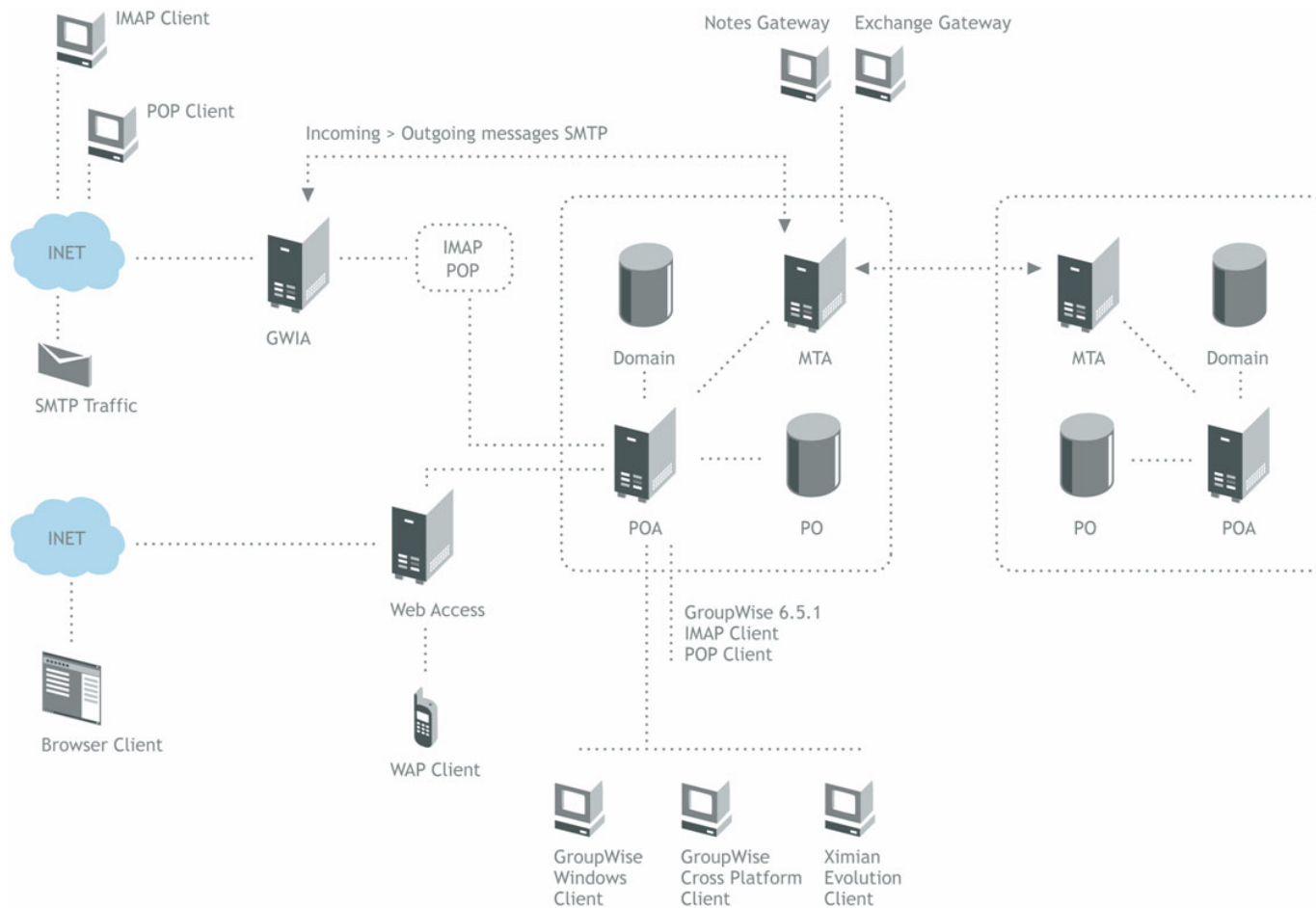
Shared folders



Document management

N

Complete Collaboration Environment





GroupWise Server Features



Server Side Rules

RBL Support

Automatic Redirection

Document Management

Calendaring

Single Copy Message Store

Integration with eDirectory

Web interface

Status tracking

Instant Messaging agents



GroupWise Server Features

Web console for Agents

Client redirection

Standards based support

- POP/IMAP/iCal, SMTP, TLS, S/MIME, HTTP,

Administrative client options

Attachment size limitations

Mailbox retention settings

Message Retraction

SSL between all server/client communication





GroupWise Client Features



Categorization of messages, contacts

Calendaring, tasks, notes

Multi-tab calendar view

Shared address books

Busy search

Quick viewers

Message Filtering



GroupWise Client Features



Shared Folders

Proxy

Offline

POP/IMAP/NNTP

Search Folders

Contact Management

Junk Mail Handling

Indexed message store

N

GroupWise Client Access Options



There are many access options:

- GroupWise rich client - online, caching, remote
- Browser - HTML, Simple HTML, WebClipping, WML
- Standards based - POP/IMAP/iCal



For rich client access, Caching is the way to go

- Increases scalability of server (beyond 3,000/server)
- Doesn't sacrifice features of online mode
- Also works when disconnected

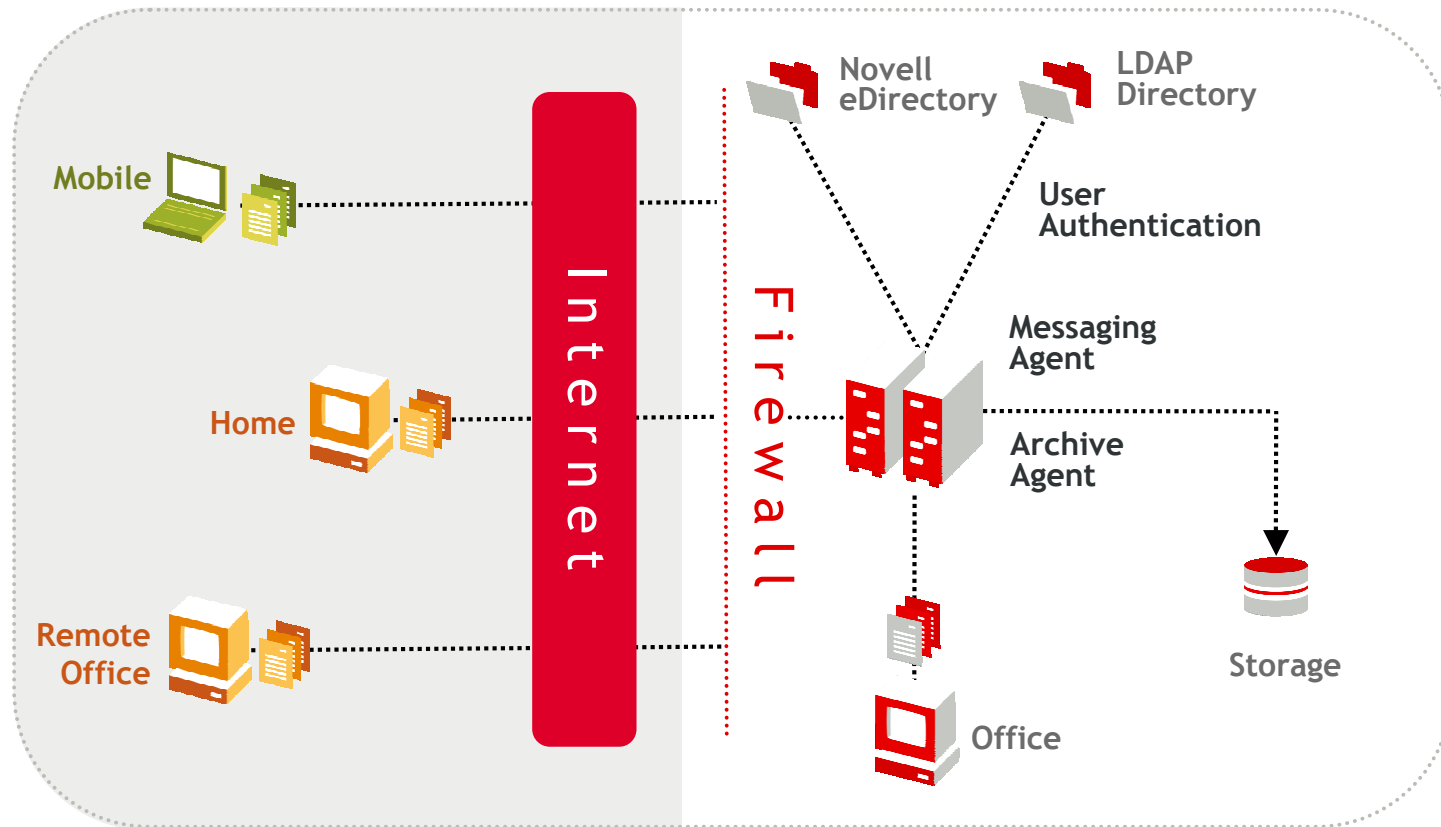


Browser access has many advanced features:

- Proxy, search, send options, rules, shared folders, address book, checklist



Novell GroupWise Messenger: Architecture



N

System Administration



GroupWise administered through ConsoleOne

ConsoleOne is used to administer all Novell products

Tied into Novell eDirectory

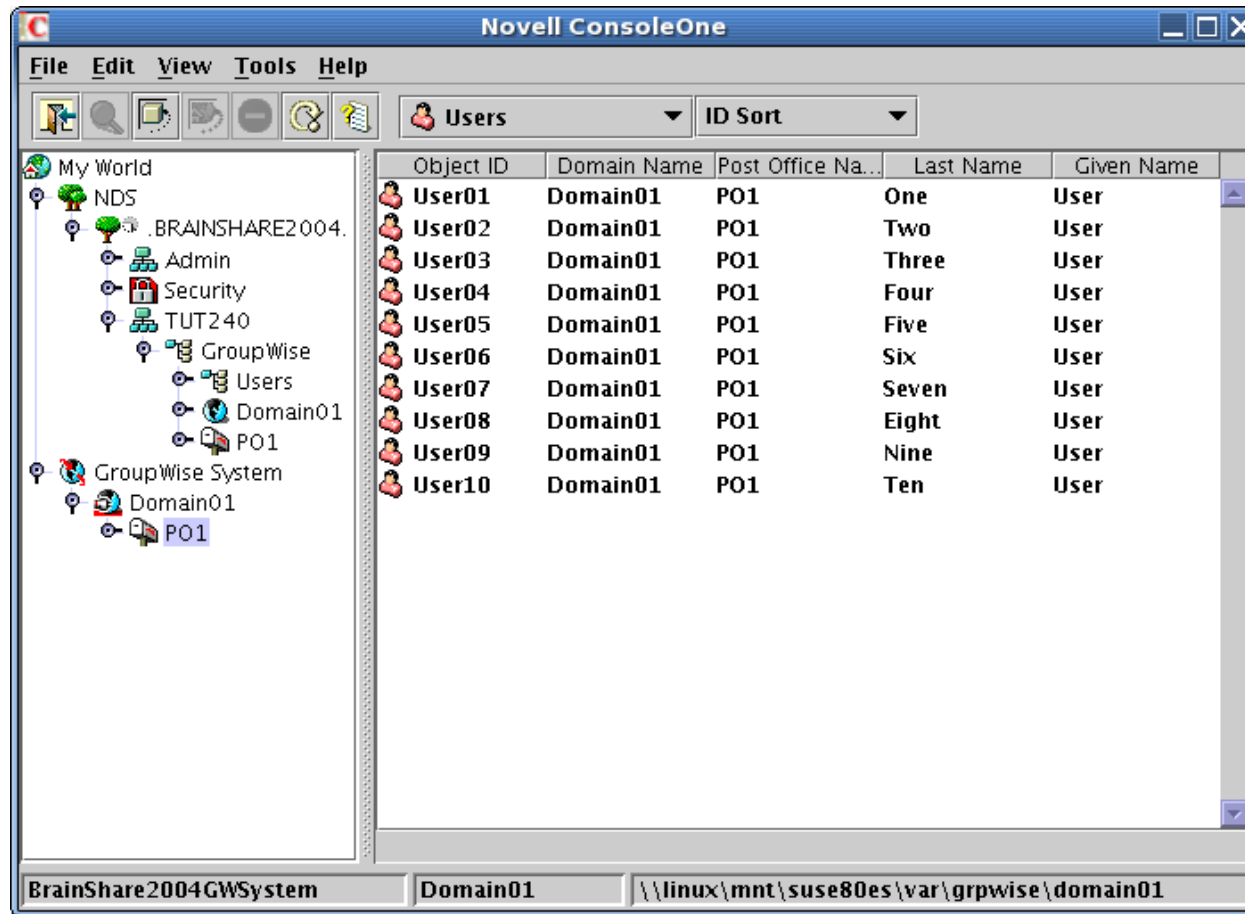
- Reducing administration training costs

Changes in eDirectory reflected in GroupWise

Doesn't require eDirectory on the same machine

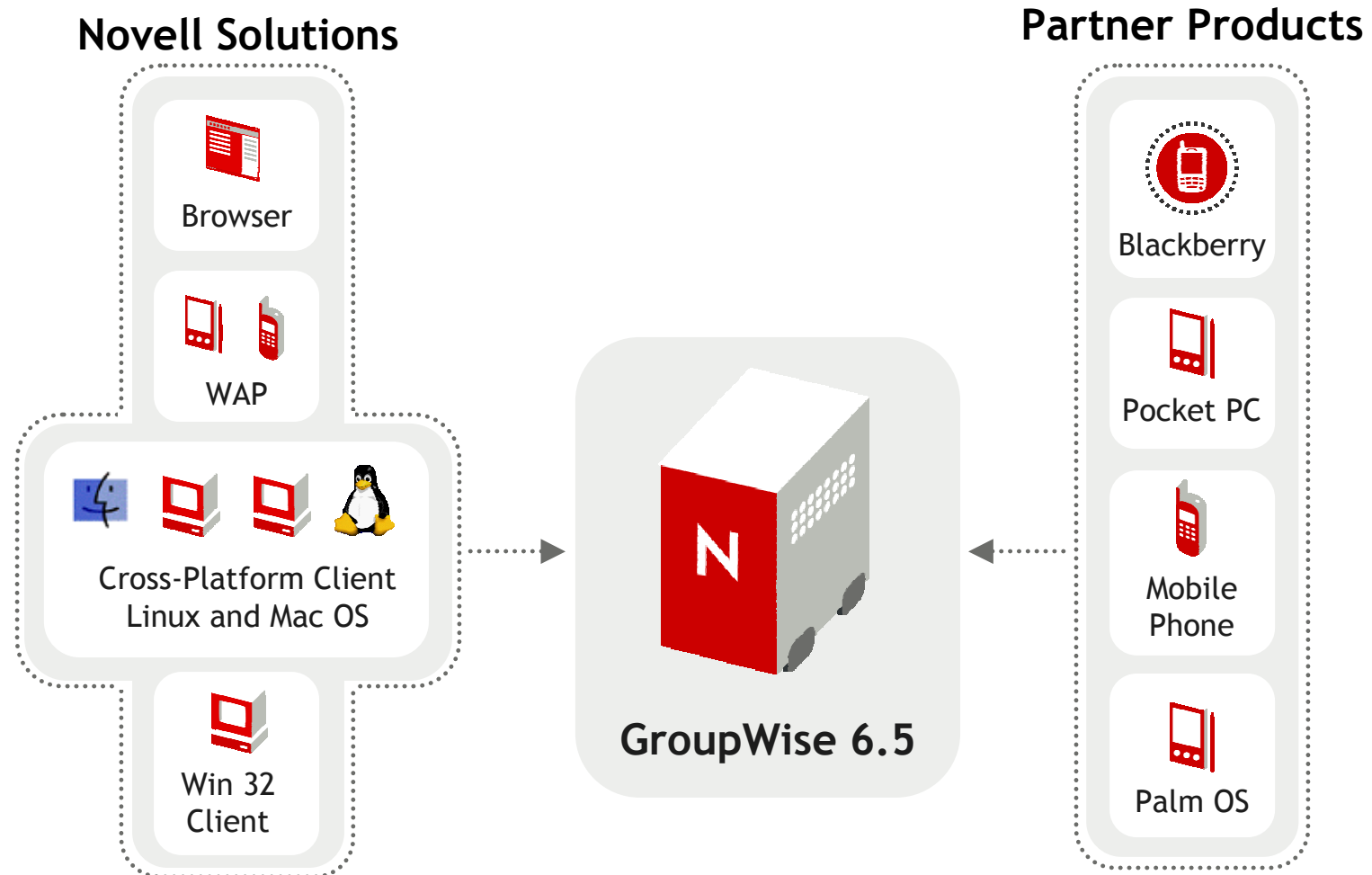
N

ConsoleOne Administration





Flexible Accessibility



N

GroupWise Open Source Projects in 2004



Evolution

- GroupWise protocol

iFolder - file-based collaboration

- Address Book
- Data synchronization engine (“Simias”)

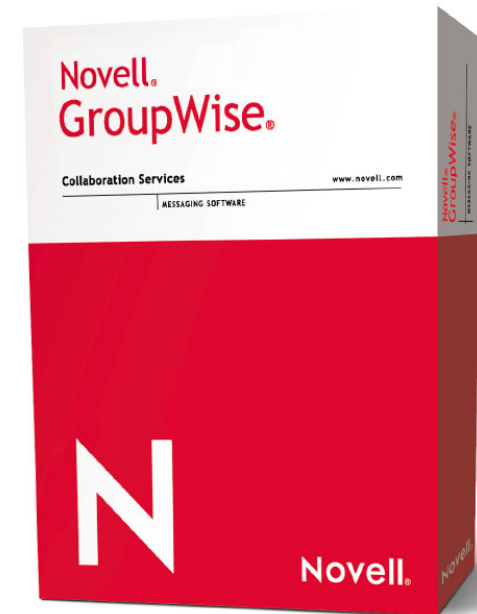
GAIM

- GroupWise Messenger plug-in

N

Distinguished Value

Highest level of security
Flexible accessibility
Lower total cost of ownership



N

Highest levels of security



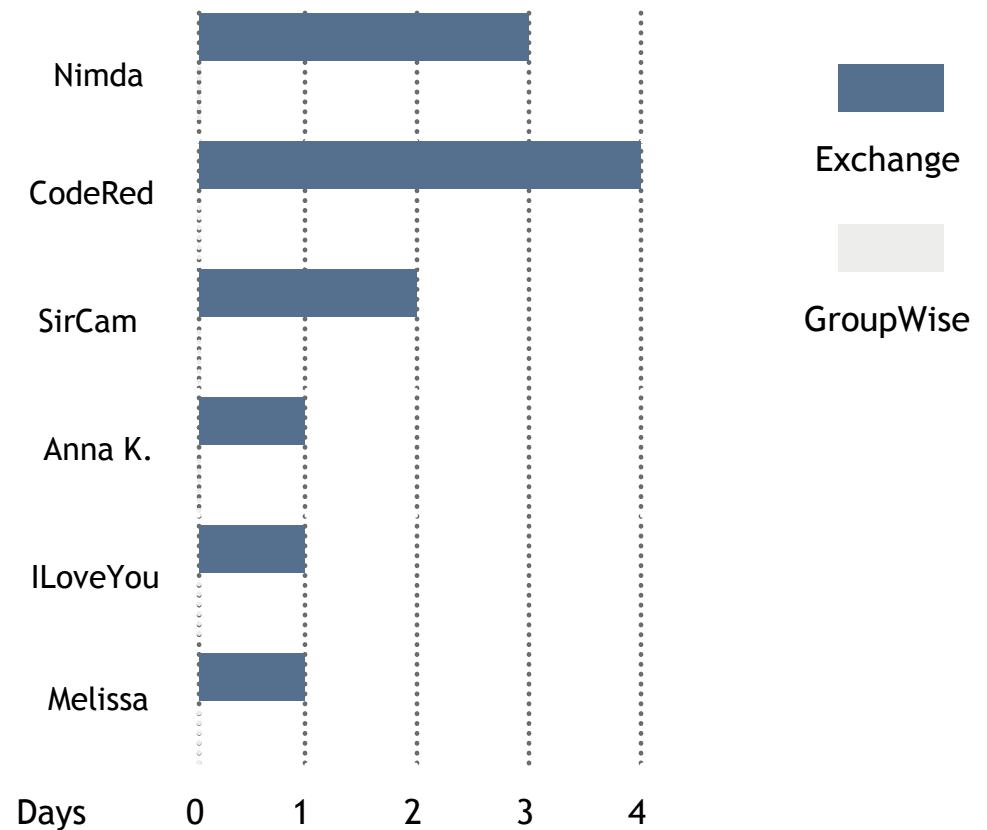
- Server side anti-spam tools to keep spam from becoming corporate email
- Secure instant messaging behind the firewall and via SSL
- Encrypted address book
- No way to automatically execute files

N

Highest levels of security

Average System Downtime per Virus

- There are no entries in the CERT/CC virus database for GroupWise 6.5
- One GroupWise security patch since 1998 with no reported customer breaches



N

Highest levels of security



“We decided to migrate from Microsoft Exchange to GroupWise because it was the most secure platform available...we’ve experienced zero downtime due to virus attacks.”

-Gareth Wright,
Technical Manager, Carlton TV

N

Low TCO

Simple administration

Shallow learning curve



“I can't imagine there being an easier e-mail/workflow system to administer. I stepped in to the job three years ago with absolutely no experience, and I have never had a situation where my (then) lack of experience was an issue. GroupWise is rock-solid.”

-Joe Zitnik
Henry Ford Community College
20,000 GroupWise users
1 administrator

N

Low TCO

Simple administration

Shallow learning curve

Host as many as 10,000
users on a single server!



"I have never used another system comparable to GroupWise."

-Nathan Parton
Thames Valley University
25,000 GroupWise users
1 administrator

GroupWise 6.5 for Linux

Complete Linux Collaboration

N

Introducing the first enterprise-class collaboration system for Linux

Enterprises need a complete, end-to-end collaboration solution for Linux with:



Corporate email features



Corporate calendaring features



Proven security and reliability



Demonstrated low total cost of ownership



Global support 24 x 7 x 365

N

End-to-end Linux collaboration



GroupWise for Linux agents

- Post Office, Message Transfer, Internet Gateway, Web Access, Instant Messenger

Clients

- Ximian Evolution, GroupWise Cross-Platform, GAIM

Server Operating

- SuSE Operating system

Desktop Operating System

- SuSE Desktop

Desktop Environment

- Ximian Desktop 2

Management

- Console One

Support

- 24x7, global support teams

Deployment

- Novell Ngage

N

Cross-Platform Client

Supported on

- SUSE Linux Desktop 8.2 and 9
- Red Hat Professional Workstation 8 and 9
- Mac OS 10.3.2



Requires JVM 1.4.2





Cross-Platform Client Features

Included in Initial Release

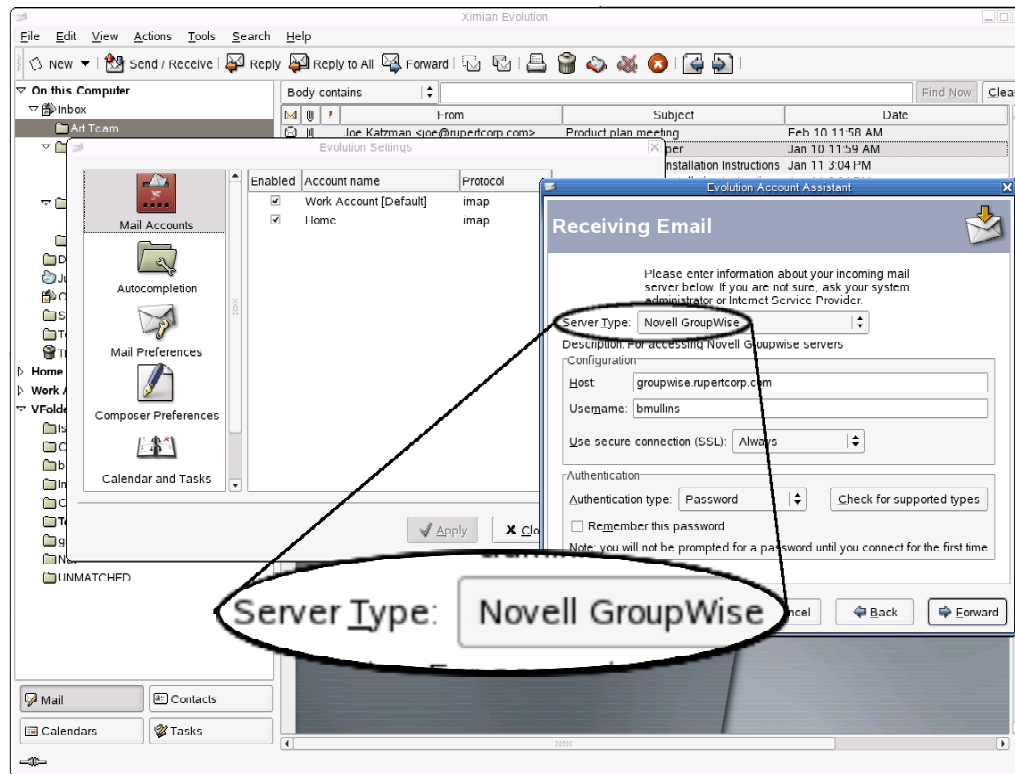
- Mail, Calendar, Notes
- Corporate and Personal Address Book
- Busy Search (Scheduling)
- Caching Mode
- Shared Folders
- QuickFinder
- Proxy Access
- Archiving
- Encryption

Coming in Future Release

- Spell Check
- Notify
- Auto-Reply Rules
- Category Support
- Viewers
- Document Management
- Routing

N

Evolution Support Already Available



N

More Evolution Support On The Way



Evolution 2.0 (late Spring 2004)

- Ability to select GW as an account creation protocol
- Use GW protocol to access GW calendar
- Scheduling meetings & conducting busy searches
- Contact lists
- Global address lists

Evolution 2.2 (Fall 2004)

- File attachments in calendar entries
- Some message routing features (delivery/read receipts)
- Task assignment
- Proxies and permissions
- User assistance for GW users

N

Perfect co-existence environment

**Novell GroupWise 6.5
for Linux can service
multiple clients:**



GroupWise
Exchange Gateway
Notes Gateway

- Cross-Platform Client
- Ximian Evolution
- GroupWise Windows Client
- GroupWise Messenger Client
- GAIM Client

N

Perfect co-existence environment

**GroupWise is
perfect for
enterprises.**



GroupWise agents seamlessly interact with each other—no matter which OS they are on.



Organizations can easily plan for staged migrations or long-term co-existence.



GroupWise grants an organization maximum flexibility in how it designs, modifies, and grows its collaboration system.

Demonstration

Novell®

Unpublished Work of Novell, Inc. All Rights Reserved.

This work is an unpublished work and contains confidential, proprietary, and trade secret information of Novell, Inc. Access to this work is restricted to Novell employees who have a need to know to perform tasks within the scope of their assignments. No part of this work may be practiced, performed, copied, distributed, revised, modified, translated, abridged, condensed, expanded, collected, or adapted without the prior written consent of Novell, Inc. Any use or exploitation of this work without authorization could subject the perpetrator to criminal and civil liability.

General Disclaimer

This document is not to be construed as a promise by any participating company to develop, deliver, or market a product. Novell, Inc., makes no representations or warranties with respect to the contents of this document, and specifically disclaims any express or implied warranties of merchantability or fitness for any particular purpose. Further, Novell, Inc., reserves the right to revise this document and to make changes to its content, at any time, without obligation to notify any person or entity of such revisions or changes. All Novell marks referenced in this presentation are trademarks or registered trademarks of Novell, Inc. in the United States and other countries. All third-party trademarks are the property of their respective owners.



Novell.