



Session 029

Exchange Server 2003

Jim Kehoe, Senior Technology Specialist Messaging

IBM @server xSeries
Technical Conference

Aug. 9 - 13, 2004

Chicago, IL

Email is Mission Critical

❖ META Group Survey April 2003

■ Email more than the Phone

- 387 organizations found that 80 percent believed e-mail was more important than the phone
- 74 percent of the respondents believed being without e-mail would present a greater hardship than losing telephone service.
- Reasons: prioritization, record keeping, integration with applications

Exchange Server 2003

Pervasive Productivity

Information Worker Productivity Gains
Communicate when and where needed
Enable New Mobile and Remote Scenarios

Mission Critical Dependability

High Availability, Reliability
Enhanced Security
Flexible Deployment and Management

Operational Efficiency

Reduce Total Cost of Ownership
Provide Greater Value
Upgrade, Migrate, Co-existence

Pervasive Productivity

Information Workers

**Pervasive
Productivity**

**Mission Critical
Dependability**

**Operational
Efficiency**

Outlook 2003 Improvements

- ❖ New User Interface and Inbox Management Tools
- ❖ Supports Mobile and Remote Worker Scenarios
- ❖ Anti-Spam Filtering, Information Rights Management

New Outlook Web Access

- ❖ Same interface and many of same features as Outlook 2003
- ❖ More secure access (S/MIME, HTML blocking, Logoff)
- ❖ Desk-less workers benefit from OWA

Secure Mobile Access

- ❖ Support for Windows Powered Mobile Devices
- ❖ Devices Synchronize directly with Exchange Server 2003
- ❖ Mobile Browse Support

Redefining Connected Outlook 2003 and Exchange 2003

- ❖ **Support for Mobile and Remote Worker Scenarios**
 - **Outlook over slow link:**
Improved performance over low bandwidth, latent, poor networks
 - **Cached Exchange Mode:**
Isolating the user from network and server availability



Outlook 2003 is Internet Ready

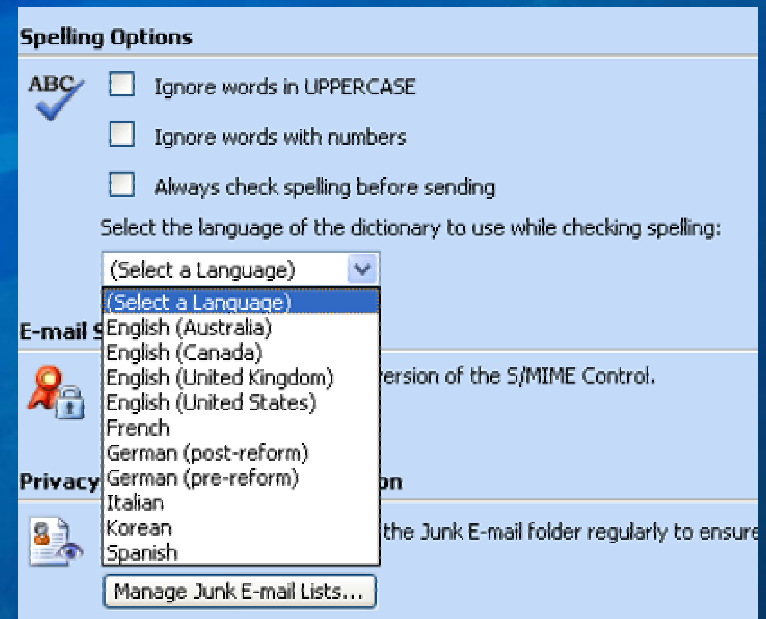
- ❖ **VPN'less Access from Outlook 2003 to Exchange 2003 over the Internet**
 - **MAPI (RPC) over HTTP(S)**
 - **Same URL as OWA/OMA/EAS**
 - **Security/Authentication**
 - **SSL**
 - **NTLM by default (Configurable to Basic)**

Exchange and Outlook Fight Spam

- ❖ **Exchange Server 2003**
 - **Global Allow/Deny Lists**
 - **Real Time Block Lists**
 - **Support for Partner Solutions Spam Confidence Level (SCL)**
- ❖ **Outlook 2003 Spam Filter**
 - **Hi, Low, None, Safe List Only, Auto-delete**
- ❖ **Block Senders, Safe Senders List**
 - **Upload to Exchange 2003**

New Outlook Web Access (OWA)

- ❖ Everything customers love in Outlook
- ❖ Spell Check
 - Tasks
 - Rules – Server Side
 - Mark read/unread
 - Sort and ‘type down’
 - Up to 100 messages listed in view
- ❖ Everything customers will love in Outlook 2003
 - Multi-Colored Quick flag support
 - View Search Folders
 - Preview pane on right side and two line view
 - HTML Frame resizing





Outlook/OWA Demo

New Outlook Web Access

❖ Improved performance

- Use idle time to pre-download controls
- Fewer Roundtrips, reduced redundant data
- GZip compression - approx 30% improvement
- Total: 80% performance improvement over Exchange 2000 OWA

❖ Improved security

- S/MIME signing/encrypting
- Install S/MIME ActiveX Control on client
- Cookie based logon and Timed logoff
- Attachment blocking – Can block by file type, access method (FE vs BE) or hostname
- External content blocking – block references to external content (user override)
- Safe/Block Lists

E-mail Security



Click here to install the latest version of the S/MIME Control.

Download

Exchange Server 2003 Mobility

Access to your mailbox from mobile devices over any network

- ES03 comes with Mobility built-in
 - Exchange Server ActiveSync
 - PocketPC
 - Windows Powered Mobile Devices
 - Smartphones
 - Mobile Browse Support – HTML, xHTML, cHTML
- Integrated topologies, deployment, and management with OWA



Secure and Dependable Communications

**Pervasive
Productivity**

**Mission Critical
Dependability**

**Operational
Efficiency**

High Availability

- ❖ Proactive Monitoring and Management with Microsoft Operations Manager
- ❖ Improved Virtual Memory Management

Greater Security

- ❖ Default settings optimized for security
- ❖ Exchange communication links more secure (Kerberos, IPsec, and SSL)
- ❖ Anti-Spam protection at Server and Client
- ❖ Outlook Web Access more secure from anonymous PCs

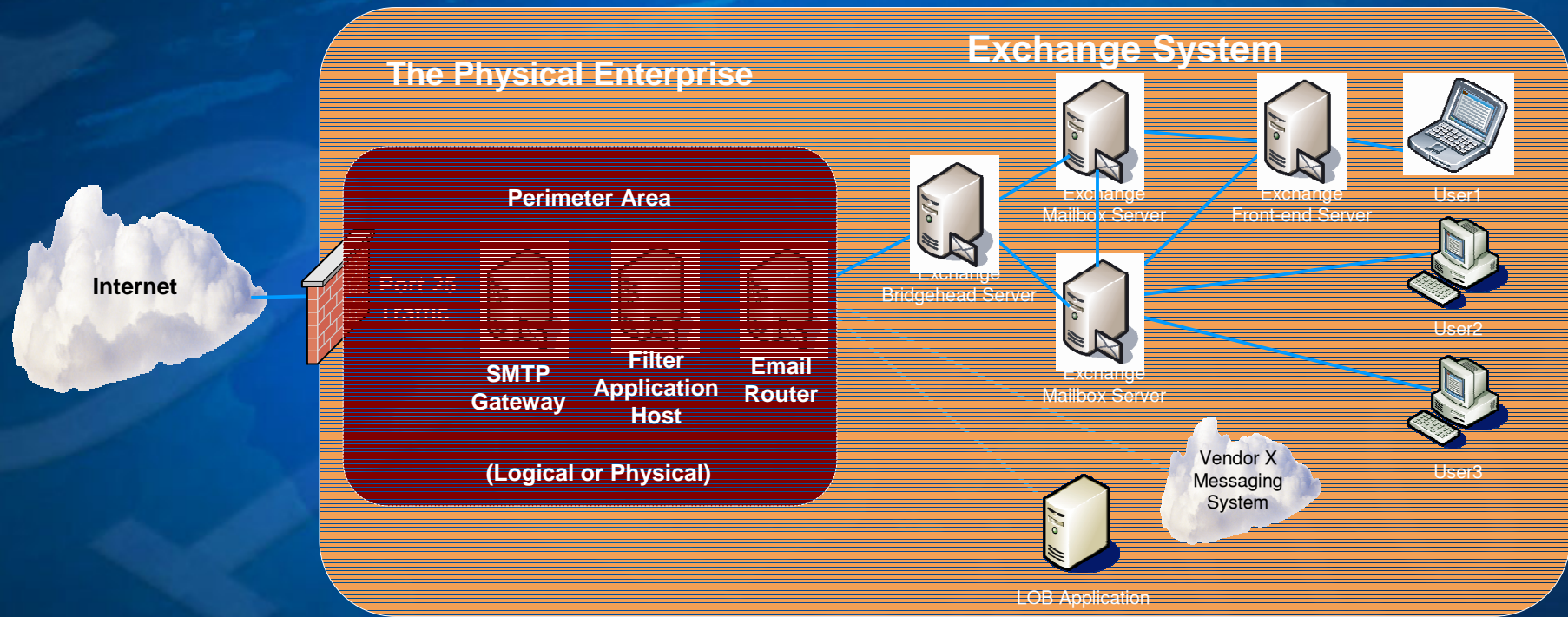
Availability and Dependability

- ❖ **Fast backup/recovery**
 - Volume Shadow Copy Service
 - Recovery Storage Group
- ❖ **Higher availability**
 - Improved Virtual Memory Management
 - Outlook 2003 Client Performance Logging
 - Integration with IIS 6.0 Dedicated App Mode
 - 4 & 8 node clustering with Windows Server 2003
- ❖ **Security Enhancements**
 - Outlook 2003 – Exchange 2003 Kerberos
 - Tight Windows Server 2003 Integration
 - Trustworthy computing
- ❖ **Secure email**
 - S/MIME (Outlook, OWA)

Microsoft Exchange Intelligent Message Filter

- ❖ Leverage SmartScreen Technology
- ❖ Extension to Exchange2003 Server, deployed on Internet Bridgeheads
- ❖ Leverages the ISV infrastructure
- ❖ Coexistence with 3rd party solutions
- ❖ Supports per Message tagging
- ❖ Administration via Exchange System Manager Console extension
- ❖ Update Service
- ❖ <http://www.microsoft.com/exchange/imf>

Exchange Edge Services



Cost Control with Exchange 2003

**Pervasive
Productivity**

**Mission Critical
Dependability**

**Operational
Efficiency**

Reducing the Total Cost of Ownership

Administrative Productivity

- ❖ **Single Seat Administration with Active Directory**
- ❖ **Proactive Monitoring and Management with Microsoft Operations Manager**
- ❖ **Get more done each day**
- ❖ **New Deployment Tools**

Server Consolidation Opportunities

- ❖ **Operational Efficiency**
- ❖ **Reduce Servers**

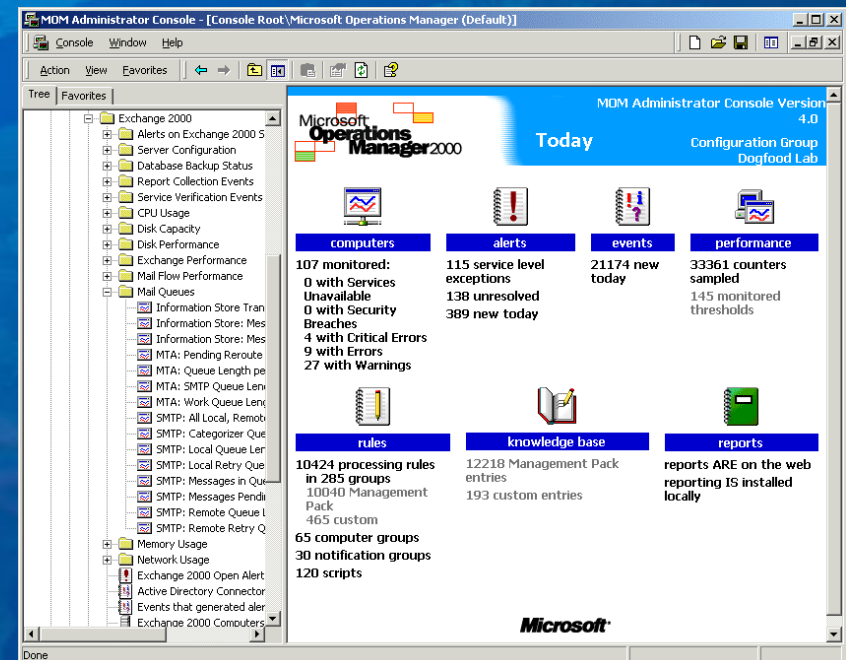
Administering Exchange 2003 Productivity for Administrators

- ❖ **Integration with Active Directory**
- ❖ **Internet Mail Connection Wizard**
- ❖ **Query Based Distribution Group**
- ❖ **Move Mailbox improvements**
 - **Multi-threaded**
 - **Scheduled**
- ❖ **Public Folder administration enhancements**
- ❖ **Enhanced Windows Management Instrumentation (WMI) monitoring capability**
 - **greater manageability and availability**

Microsoft Operations Manager (MOM)

High Uptime, Proactive Problem Management and Rapid Resolution

- ❖ Management solution for distributed systems
- ❖ Exchange Management Pack
 - Out-of-box alerting and monitoring for Exchange based upon 1700 Rule Definitions
 - All components and topologies are monitored
 - Exchange Mailbox/Transport, AD, IIS, Outlook 2003
 - Available for Exchange Server 2003
- ❖ More Information
<http://www.microsoft.com/exchange/mom>



The image features the Microsoft logo in a bold, italicized, white font with a black drop shadow, centered on a blue background. The background is a gradient of blue, with faint, semi-transparent binary code (0s and 1s) and a globe-like pattern visible. The logo is the central focus, with a registered trademark symbol (®) at the end.

Microsoft[®]