

IBM TPC Reporter for Disk

Overview of Process:

The *IBM TPC Reporter for Disk* is a Java 2 Platform application that connects remotely to a workstation running IBM's TotalStorage Productivity Center (TPC) software. The TPC Reporter will extract storage subsystem information and hourly performance statistics from the TPC workstation. Extracted statistics are compiled locally, and transcribed into a white-paper style PDF file, which is saved on the local machine. The report will contain information detailing your storage server utilization.

The Reporter will generate reports for subsystem types DS8k, DS6k, DS4k, SVC, and ESS. 3584 Tape Library Family subsystems are currently NOT supported.

The automatically generated report will contain an overview of the subsystem information, basic attributes of each subsystem components, a performance summary of each component, aggregate statistics of each component, and charts detailing information about each component instance. Component types reported are Subsystem, Ports, Arrays, and Volumes. Additional SVC component types reported are I/O Groups, Nodes, MDisks, VDisks.

Usage Requirements:

IBM TotalStorage Productivity Center

1. The IBM TPC Reporter for Disk supports IBM TotalStorage Productivity Center releases **3.3.3.81** and above.
2. The IBM TPC Reporter for Disk must be run on a workstation that has network connectivity with the IBM TotalStorage Productivity Center for Disk.
3. The following TPC tasks must be run any time prior to the running of the data extraction: Collect Performance Statistics.

Local Workstation

1. Minimum 1GB RAM to report on very large subsystems.
2. Processing time can take as long as one hour on T40 class ThinkPads, for large subsystem configurations and/or very long timeframes.

Support:

IBM does not provide program services or technical support for the "TPC Reporter for Disk" utility. Questions can be directed via email to eSizings@us.ibm.com. IBM will endeavor to reply to these questions as expeditiously as possible. Customers are asked to include the words "TPC Reporter for Disk" in the title to insure questions are properly routed.

Terms and Conditions:

Because the utility is provided free of charge, there is no warranty for the program, to the extent permitted by applicable law. IBM provides this program "as is" without warranty of any kind, either expressed or implied, including, but not limited to, the implied warranties of merchantability and fitness for a particular purpose.

Neither IBM nor its suppliers will be liable for any direct or indirect damages, including without limitation, lost profits, lost savings, or any incidental, special, or other economic consequential damages, even if IBM is informed of their possibility.

Installation Instructions:

Microsoft Windows

Run the installer by executing (or double-clicking) the file TPCReporter.exe. You must have administrator permissions to install on Windows NT/2000/XP.

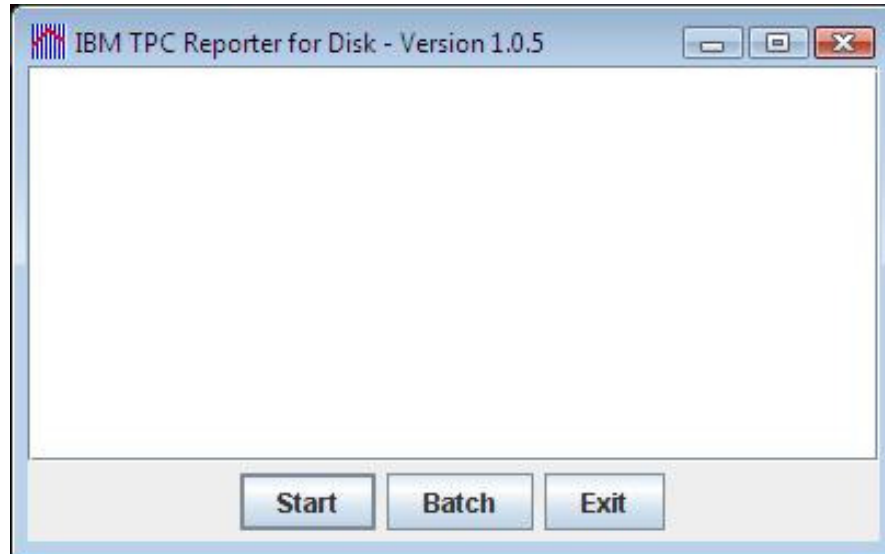
Usage Instructions:

Launch the Reporter

Microsoft Windows

- a. Click Start Button.
- b. Select Programs
- c. Select the IBM TPC Reporter for Disk folder
- d. Select the IBM TPC Reporter for Disk icon

1. Start the Report Generation Process.



- a. Press the "Start" button to begin.

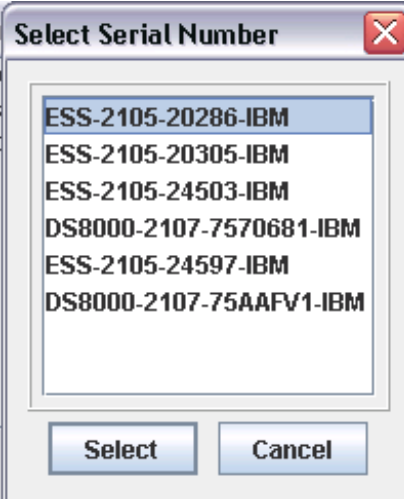
2. Enter Connection Information.



The "Connection Information" dialog box contains four input fields: "Hostname" with the value "hostname.com", "Port" with the value "9550", "UserID" with the value "tpcadmin", and "Password" with a masked value of "*****". At the bottom, there are "Continue" and "Cancel" buttons.

- Fill in all fields and press the "Continue" button
- Port number is typically **9550**
- UserID can be any TPC account that has permission to read performance data

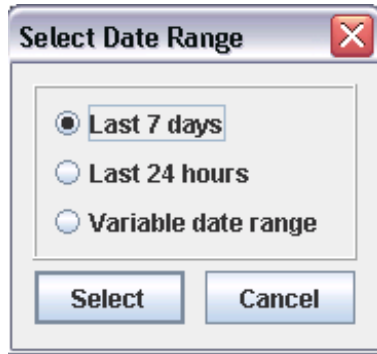
3. Select the Subsystem to Report.



The "Select Serial Number" dialog box displays a list of six subsystem identifiers. The first item, "ESS-2105-20286-IBM", is highlighted. The other items are "ESS-2105-20305-IBM", "ESS-2105-24503-IBM", "DS8000-2107-7570681-IBM", "ESS-2105-24597-IBM", and "DS8000-2107-75AAFV1-IBM". At the bottom, there are "Select" and "Cancel" buttons.

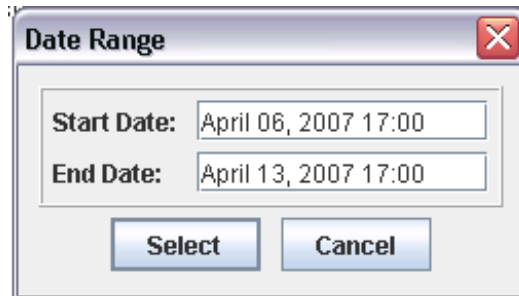
- Select a valid subsystem within the defaults displayed in the panel.
- Press the "Select" button.

4. Select the Date Range.



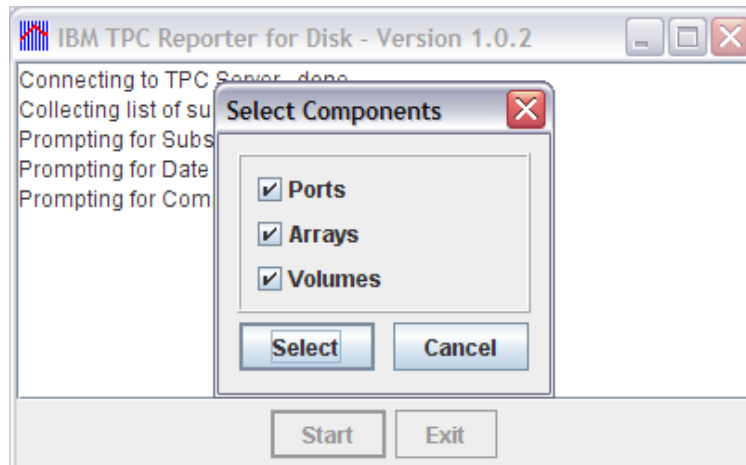
- a. Select a time period to report.
- b. Press the “Select” button.

5. (Optional) Select Variable Date Range.

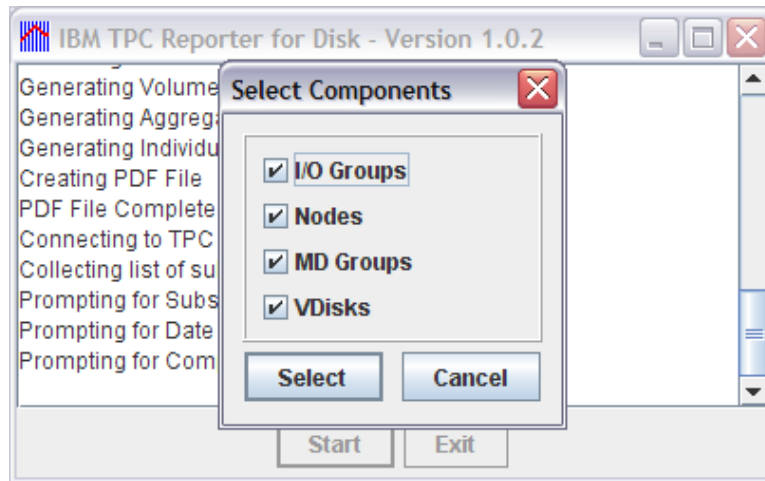


- a. Select a time period to report.
- b. Press the “Select” button.

6. Select Components.



- a. Select which subsystem components to include in the report, for ESS & DS-type systems. All components are selected by default.

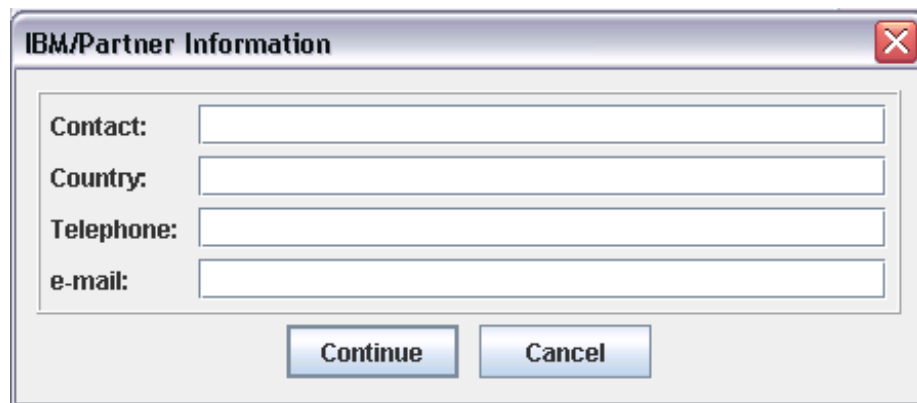


- b. Select which subsystem components to include in the report, for SVC-type systems. All components are selected by default.

7. Enter Customer information.

- a. Fill in all fields and the press Continue

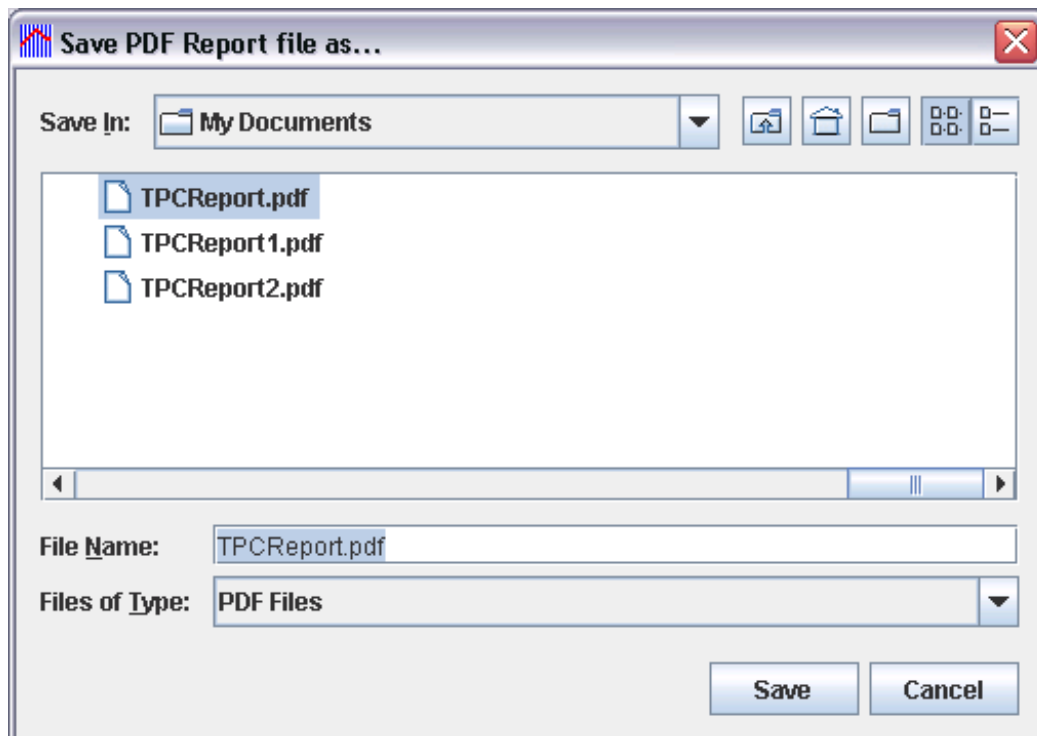
8. Enter IBM/Partner Information.



The image shows a dialog box titled "IBM/Partner Information" with a close button (X) in the top right corner. It contains four text input fields labeled "Contact:", "Country:", "Telephone:", and "e-mail:". Below the fields are two buttons: "Continue" and "Cancel".

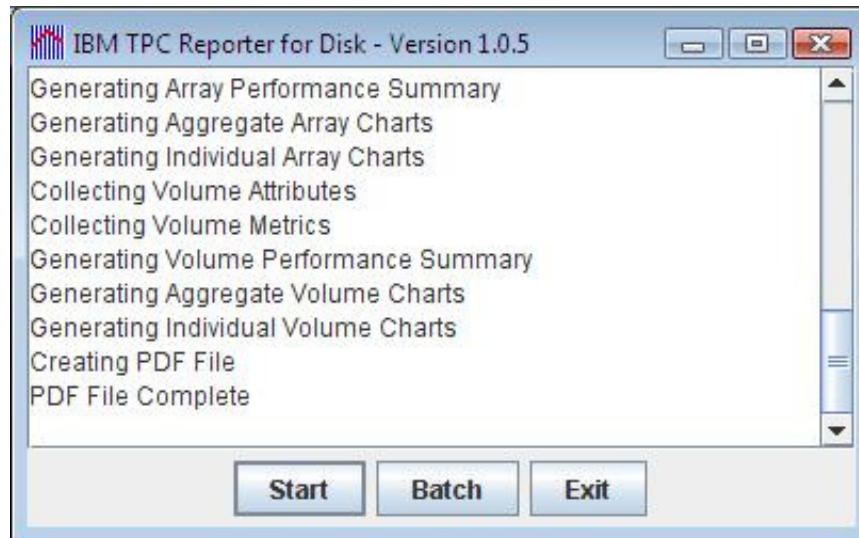
- a. Fill in all fields and the press Continue

9. Select File Name to Save Report as.



The image shows a "Save PDF Report file as..." dialog box with a close button (X) in the top right corner. The "Save In:" field is set to "My Documents". The file list contains three items: "TPCReport.pdf", "TPCReport1.pdf", and "TPCReport2.pdf". The "File Name:" field is set to "TPCReport.pdf" and the "Files of Type:" dropdown is set to "PDF Files". At the bottom right are "Save" and "Cancel" buttons.

10. Close the Reporter.



- a. Press the “Exit” button to close the Reporter.

Batch Mode Reporting

1. Click the “Batch” button
2. Follow the dialog steps as usual, entering the report info for the disk server to be reported.
3. The Reporter will prompt you to save a “.bat” file
4. The Reporter will also prompt you for a directory to save reports.
5. Execute the “.bat” file to execute a gui-less report for the parameters you entered in step 2. The “.bat” file can be executed automatically from Windows Scheduler for the period of the report, say every 7 days for a 7 day report.

Release Notes:

Version 1.0.5

- New feature: Batch button, creates a bat file to be called with Windows Scheduler
- Proper sorting of Volume Extent Pools

Version 1.0.4

- Updated libraries to ONLY support TPC version 3.3.3.81 and above

Version 1.0.3

- Updated libraries to support TPC version 3.3.1.75 and above

Version 1.0.2

- DS/4000 type machines are now supported
- Added ability to remove subsystem component subtypes from the report

Version 1.0.1

- Checks version of TPC for Disk server, and will not run unless server is at version 3.1.3.55 or greater
- Default filename now contains subsystem server name and the dates of performance statistics
- Reporter remembers save directory
- 'Array Information' section corrected to read 'Storage (Extent) Pool Information'
- Many formatting improvements to improve readability, and reduce or eliminate name truncation

Version 1.0.0

- Initial Release

Copyright © 2008 IBM Corporation. All Rights Reserved.

Neither this documentation nor any part of it may be copied or reproduced in any form or by any means or translated into another language, without the prior consent of the IBM Corporation. IBM makes no warranties or representations with respect to the content hereof and specifically disclaims any implied warranties of merchantability or fitness for any particular purpose. IBM assumes no responsibility for any errors that may appear in this document. The information contained in this document is subject to change without any notice. IBM reserves the right to make any such changes without obligation to notify any person of such revision or changes. IBM makes no commitment to keep the information contained herein up to date. IBM is a registered trademark of the International Business Machines Corporation