

# IBM CICS® Explorer: The Smart New Face of IBM CICS

Andrew Bates  
Business Development Manager

[batesan@cn.ibm.com](mailto:batesan@cn.ibm.com)



IBM CICS® User Conference 2009

# Introduction

This two part session will look in depth at the CICS Explorer, discussing its architecture, its construction, the state of what's available now, as well as plans and directions for its future.

The session will also cover how IBM's key CICS Tools have been built on top of the Explorer framework, delivering Interdependency Analyzer (IA) Explorer, Configuration Manager (CM) Explorer and Performance Analyzer (PA) Explorer capabilities.

## **Agenda:**

- **A (very) brief introduction to Eclipse (part 1)**
- **Introduction to the CICS Explorer (part 1)**
- Introduction to the CICS Tools Explorer (part 2)

# What is Eclipse?

“ Eclipse is a multi-language software development platform comprising an IDE and a plug-in system to extend it. It is written primarily in Java and can be used to develop applications in Java and, by means of the various plug-ins, in other languages as well, including C, C++, COBOL, Python, Perl, PHP, and others. ”

[http://en.wikipedia.org/wiki/Eclipse\\_\(software\)](http://en.wikipedia.org/wiki/Eclipse_(software))

- A Java IDE
- An IDE Framework
- A Tools Framework
- An Application Framework
- A community
- An eco-system
- A foundation
- An Open Source Enabler



Screenshot [\[show\]](#)

Developer(s)	Free software community
Stable release	3.5.0 (Galileo) / 2009-06-24; 34 days ago
Preview release	3.6
Written in	Java
Operating system	Linux , Mac, Windows (Cross-platform)
Available in	Multilingual
Development status	Active
Type	Software development
License	Eclipse Public License
Website	<a href="http://www.eclipse.org">www.eclipse.org</a>

# What is a Rich Client?

- An application that uses the windowing and GUI features of the operating system
  - Native widgets
  - Drag & drop
  - Integration with platform component model
  - Much, much, more...

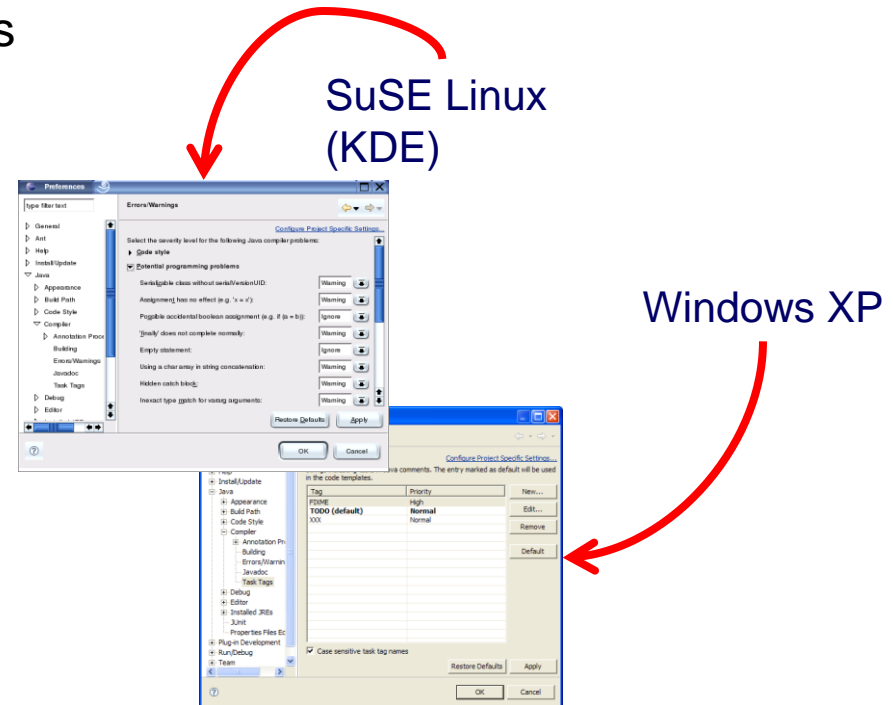


“ Eclipse provides the Eclipse Rich Client Platform (RCP) for developing general purpose applications. ”

[http://en.wikipedia.org/wiki/Eclipse\\_\(software\)](http://en.wikipedia.org/wiki/Eclipse_(software))

# Why Use Eclipse Rich Client Platform?

- A consistent and native look and feel across applications and features
- Provides common application services
  - Native look and feel
  - Window management
  - Standardized component model
    - Pervasive extensibility
    - Update Manager
  - Help system
- First-class development tools
- Middleware for building rich client applications!
  - Allows programmers to focus on core application not the plumbing
  - Don't reinvent the wheel



# CICS Explorer Topics

- Why, What, When, How?
- V3 SupportPacs
  - V3 Demo
- V4 Additions
  - V4 Demo
- Explorer Integration
  - Tools Integration Demo
- Useful Links
- Summary

# Why What When How

- ***Simplify CICS***

- *New users, familiar user interface, high learning curve, experienced user investment*

- ***Integration platform***

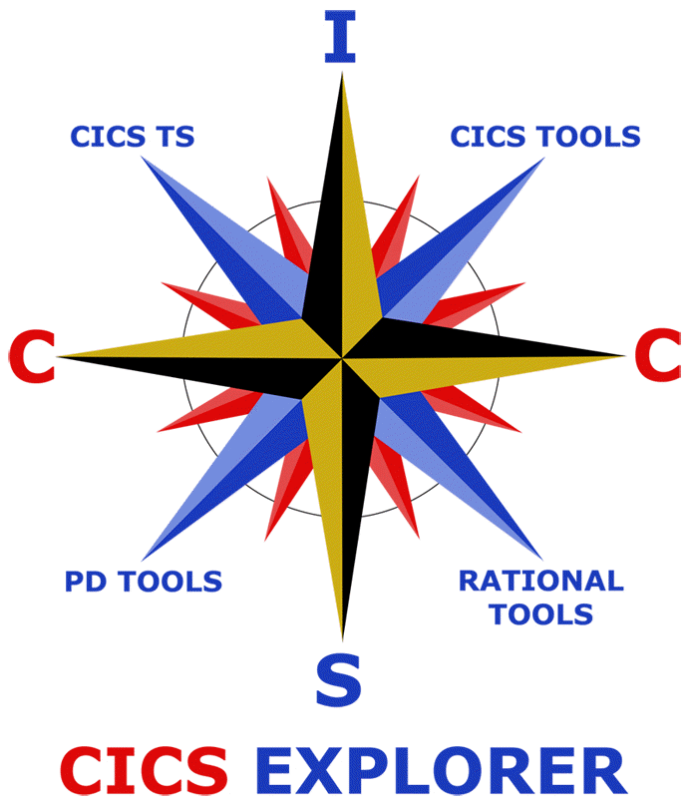
- *Value of the sum exceeds the part, first class cross tool scenario integration*

- ***Wide and deep***

- *Streamline process and add value to experienced CICS professionals*

# Why What When How

The Traditional Face of CICS



**Terminal Session:**

```

I TASK
STATUS: RESULTS - OVERTYPE TO MODIFY
Tas (0000021) Tra (CONL)          Sus Tas Pri ( 255 )
Sta (U ) Use (CICUSER) Uow (C1A8B0BE02B3376D)
Tas (0000024) Tra (CO10)          Sus Tas Pri ( 255 )
Sta (U ) Use (CICUSER) Uow (C1A8B0BE4B1970A0) Htu (USERWAIT)
Tas (0000025) Tra (CICS Explorer)
Sta (U ) Use (C
Tas (0049669) Tra
Sta (TO) Use (C
    
```

**Resource Table:**

Region	Job Name	MVS Sys...	Task Co...	I/O Count
YCWF01	YCWF01	MV2C	3	114117
YCWF01	YCWF01	MV2C	3	119160
YCWF01	YCWF01	MV2C	3	1189511
YCWF02	YCWF02	MV2C	3	1091295
YCWF03	YCWF03	MV2C	6	60891
YCWF04	YCWF04	MV2C	4	60351
YCWF05	YCWF05	MV2C	4	60248
YCWF06	YCWF06	MV2C	3	103732
YCWF07	YCWF07	MV2C	3	104141
YCWF08	YCWF08	MV2C	3	108536
YCWF09	YCWF09	MV2C	3	117582
YCWF10	YCWF10	MV2C	3	117779
YCWF11	YCWF11	MV2C	5	59744
YCWF12	YCWF12	MV2C	4	60457
YCWF13	YCWF13	MV2C	4	59722
YCWF14	YCWF14	MV2C	5	60898
YCWF15	YCWF15	MV2C	5	54185
YCWF16	YCWF16	MV2C	7	56219
YCWF17	YCWF17	MV2C	3	63353
YCWF18	YCWF18	MV2C	4	60794
YCWF19	YCWF19	MV2C	3	1091125
YCWF20	YCWF20	MV2C	3	1089000
YCWF21	YCWF21	MV2C	3	1088866
YCWF22	YCWF22	MV2D	3	110327
YCWF23	YCWF23	MV2D	4	119291

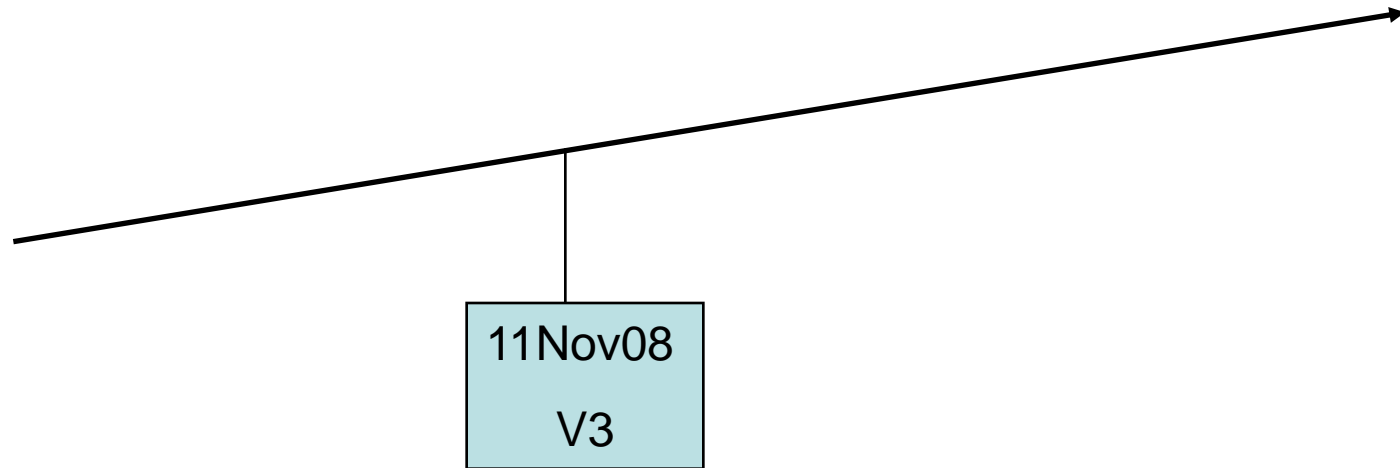
**Attributes Panel:**

- App ID: YCWF01
- CICS Release: E660
- CICS Start Time: 17-Apr-2009 00:24:4
- CICS Status: ACTIVE
- CICS System ID: WFW1
- CICS TS Level: 040100
- Command Protection Status: CMDPROT
- Conversion: NONCONVERSE
- Dadset: 02:00:00
- Disinterval: 12:00:00
- Exception Monitoring Status: NOEXCEPT
- Exit Wait Time: 5000
- Force: NOFORCE
- Frequency: 00:00:00
- I/O Count: 63353
- Identity: NOIDENTY
- Initialization Status: INITCOMPLETE
- Job Name: YCWF01
- Last Reset Time: 00:00:01
- Ldglib: 3
- Ldglibort: 0
- Ldglibsv: 0
- Loader Request Count: 22
- Loader Wait Count: 0
- Loadhmc: 0
- Loadpri: 62
- Loadri: 30846
- Loadtime: 00:00:00.000000
- Monitoring Status: OFF
- Monotime: 04T
- MRO Batch Requests: 1

The Smart New Face of CICS



# Why What **When** How



# CICS Explorer for CICS TS V3

**IBM - IBM CICS Explorer for use with CICS TS for z/OS V3 - Microsoft Internet Explorer**

Address: [http://www-01.ibm.com/support/docview.wss?rs=1083&context=SSGMGV&context=SSZPSF&context=SSNQZF&dc=D400&id=swg24020718&oc=en\\_US&cs=utf-8&lang=en](http://www-01.ibm.com/support/docview.wss?rs=1083&context=SSGMGV&context=SSZPSF&context=SSNQZF&dc=D400&id=swg24020718&oc=en_US&cs=utf-8&lang=en)

United States [ change ]

Home Solutions Services Products Support & downloads My IBM

Welcome [ IBM Sign in ] [ Register ]

Software > Host Transaction Processing > CICS family >

## IBM CICS Explorer for use with CICS TS for z/OS V3

**Downloadable files**

**Abstract**  
This SupportPac provides the IBM CICS Explorer, an Eclipse-based PC application that allows you to view and work with CICS system resources and definitions. V1.3, is now available.

**Download Description**

This SupportPac has been updated to version 1.3. See [details of version 1.3](#) and upgrade to this new version as soon as you can to take advantage of the fixes and performance enhancements.

The IBM CICS Explorer is a new graphical tooling interface for CICS, providing significantly enhanced levels of usability and integration. The CICS Explorer enables you to create customizable task-oriented views. It is intended to act as the tooling integration point for the CICS runtime and to provide a rich set of CICS views, data, methods, and features that are easily extensible by IBM, vendors, and clients.

The CICS Explorer is available for use with both Microsoft Windows (as SupportPac CS11) and Linux (as SupportPac CS10) operating systems, and connects to CICS Transaction System for z/OS V3.1, or later.

**Support from IBM CICS tools**  
Selected IBM CICS tools complement and enrich the base data and tasks provided by the CICS Explorer with their own views, tasks, and data to support disciplines. These disciplines include things such as CICS performance analysis, application configuration, application structure, and inter-dependency analysis. IBM CICS tools support the CICS Explorer in the form of plug-ins and are available for the following CICS tools:

- CICS Configuration Manager for z/OS (CICS CM) V1.2, or later
- CICS Interdependency Analyzer for z/OS (CICS IA) V2.2, or later
- CICS Performance Analyzer for z/OS (CICS PA) V2.1, or later

Trial versions of the CICS tools can be downloaded from <http://www.ibm.com/software/os/systemz/trials/cicstools/>

The CICS tools plug-ins SupportPac (referred to as CS1N) for the CICS Explorer can be downloaded from the **Download package** section on this page. Alternatively, detailed information about each of the CICS tools plug-ins and the same download link is provided on a page dedicated to [SupportPac CS1N](#).

An example of the CICS Explorer in use is shown below:

View Systems      View status of tasks      Edit Resource Definitions

Done      Internet

# CICS Explorer SupportPacs

an existing Eclipse environment.

Note: The CICS tools plug-ins SupportPac (CS1N) and CICS Explorer SDK SupportPac (CA1R) support both Microsoft Windows and Linux versions of the CICS Explorer.

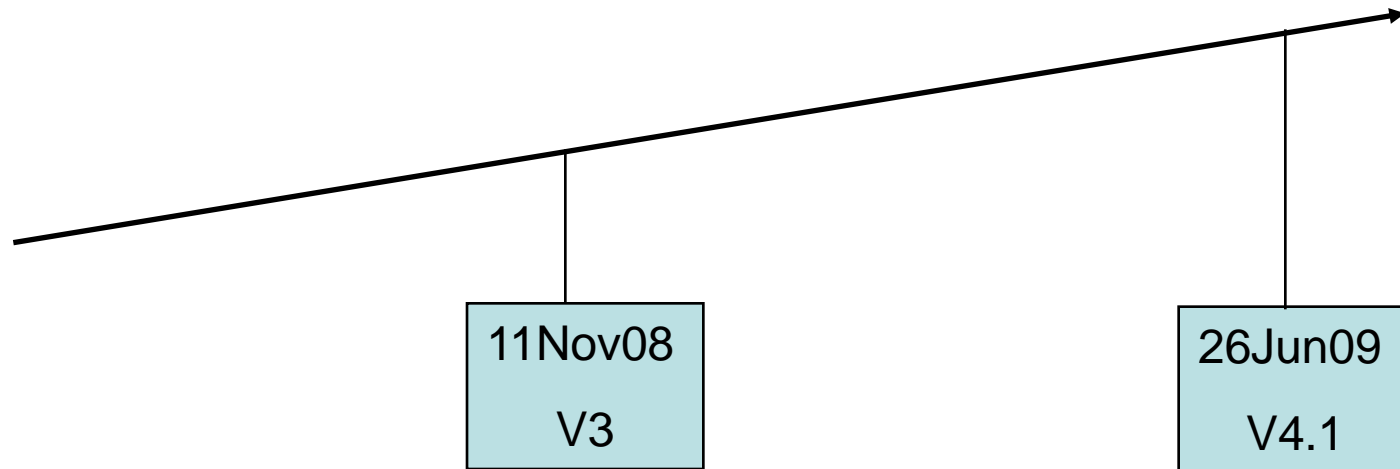
URL	LANGUAGE	SIZE(Bytes)
<a href="#">CICS Explorer ReadMe</a>	US English	9393

**Download package**

Download	RELEASE DATE	LANGUAGE	SIZE (Bytes)	Download Options
(CS1J)CICS Explorer V1.3 - Windows	28/04/2009	US English	115026421	<a href="#">HTTP</a>
(CS1O)CICS Explorer V1.3 - Linux	28/04/2009	US English	106284699	<a href="#">HTTP</a>
(CS1N)CICS tools plug-ins V1.3	28/04/2009	US English	10593139	<a href="#">HTTP</a>
(CA1R)CICS Explorer SDK	28/04/2009	US English	13994728	<a href="#">HTTP</a>

# Why What When How

*<V3 Demo>*



# V3 to V4 comparison

- ***Version 3.n***

- *Operations and Administration – Read only viewers*
- *Connection through CICSplex SM WUI server*

- ***Version 4.1***

- *Actions against RDO resources and CICSplex SM BAS definitions – Read/Write*
- *Connection to single region for RDO and CSD definitions*
- *Support for V4.1 features - Event Processing, ATOM Feeds*

## CICS TS V4.1

The screenshot shows a web browser window with the address bar displaying `http://www-01.ibm.com/software/http/cics/teacher/v41/`. The page content includes a navigation menu on the left with items like 'Features and benefits', 'System requirements', 'Library', 'News', 'How to buy', 'Events', 'Training and certification', 'Services', and 'Support'. The main content area features a large graphic with the text 'CICS Transaction Server 4.1' and a diamond-shaped logo containing 'CICS TS 4.1'. Below this is an 'Overview' section with a sub-heading: 'CICS Transaction Server for z/OS v4.1 is a modern, dependable, and cost effective application platform.' This is followed by a list of bullet points detailing new features and benefits, such as 'This version brings new levels of ease-of-use and flexibility to meet the needs of the next generation of business users...' and 'Complying with corporate, industry and government policies to manage business risk of critical business applications...'. There are also links for 'Learn more', 'Request a quote', and 'E-mail IBM'. A 'We're here to help' sidebar on the right offers assistance options. The browser's status bar at the bottom shows 'Done' and 'Internet'.

The image displays the IBM CICS Explorer interface. On the left, a terminal window shows the following text:

```

E G(CATAPP2)
ENTER COMMA
NAME T
EXMPCAT F
EXMPCONF F
ECFG T
ECLI T
EGUI T
catbundl B
explicit B
Ordering B
WBEBundl B

RESULTS: 1
PF 1 HELP 2
MA c
Connected to

RESPONS
PF 1 HELP
MA c
Connect
    
```

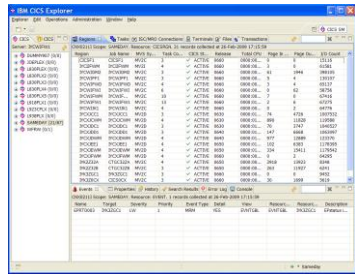
The main window is titled "IBM CICS Explorer" and shows a tree view of resources under the context "CNX0211I Context: IYCWZCGO. Resource: BUNDL". The "Bundle (Ordering)" resource is selected, and its attributes are displayed in a table:

Property	Value
Basedefinever	0
Basescape	
Bundledir	/u/moxeyc/OrderingP...
CICS Release	E660
Enabledcount	1
Name	Ordering
Partcount	1
Region	IYCWZCGO
Status	✓ ENABLED
Targetcount	1
<b>Resource Signature</b>	
Change Agent	CSDBATC
Change Agent Release	0660
Change Time	14-May-2009 12:53:57
Change User ID	MOXEYC
Define Source	CATAPP2
Define Time	14-May-2009 12:53:57
Install Agent	CSDAPI
Install Time	08-Jun-2009 09:35:26
Install User ID	CICSUSER

Below the attributes table, the "Capture Specifications" table is visible:

Region	Capture Specification	Event Binding
IYCWZCGO	Check_stock_status_on_rewrite	CatalogManagerEventbinding
IYCWZCGO	CECISigEventCapture	ExplicitEventSpecs
IYCWZCGO	Capture_customers_about_to_order	OrderingPatterns
IYCWZCGO	Capture_order_placing	OrderingPatterns
IYCWZCGO	Capture_Order_Dispatch	OrderingPatterns

# Why What When How



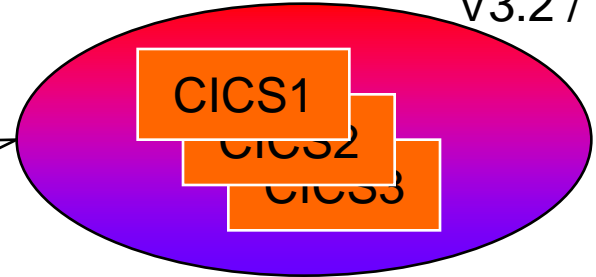
Existing CPSM Data Interface  
(read-only)

Existing CPSM Data Interface  
(read-only)

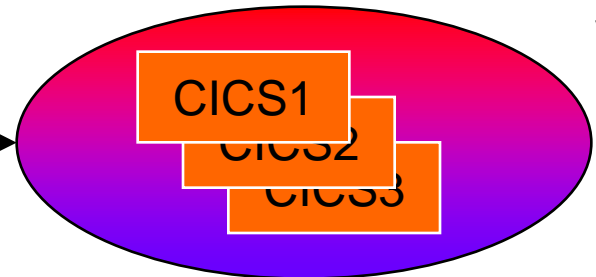
CICS Management Client  
Interface (CMCI)

CICS Management Client  
Interface (CMCI)

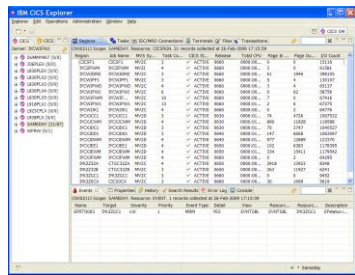
V3.2 / V3.1



V4.1



V4.1



CICS1

CICS2

CICS3

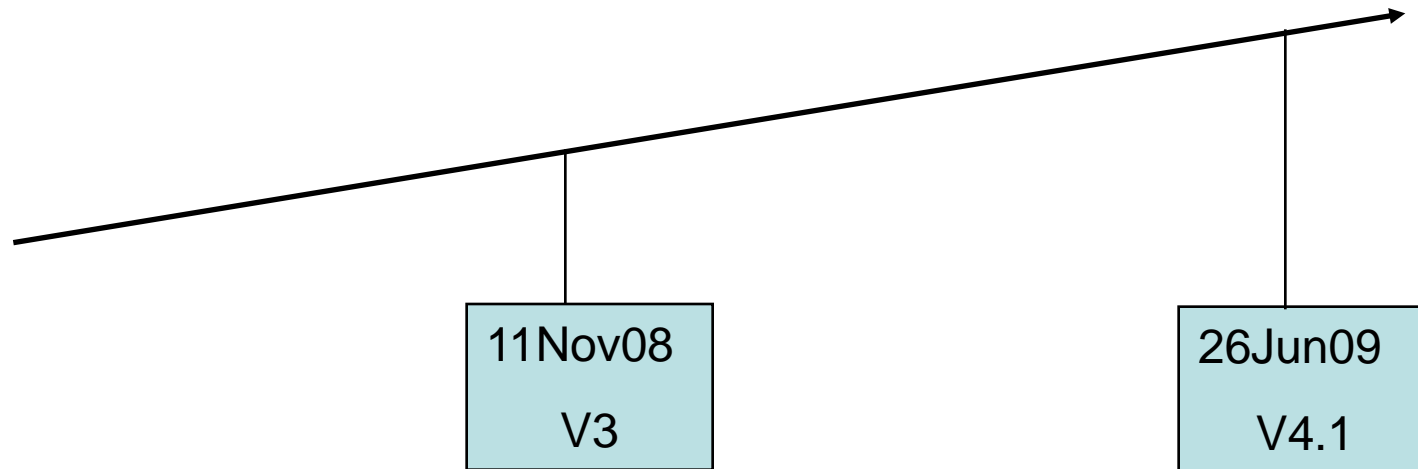


# CMCI

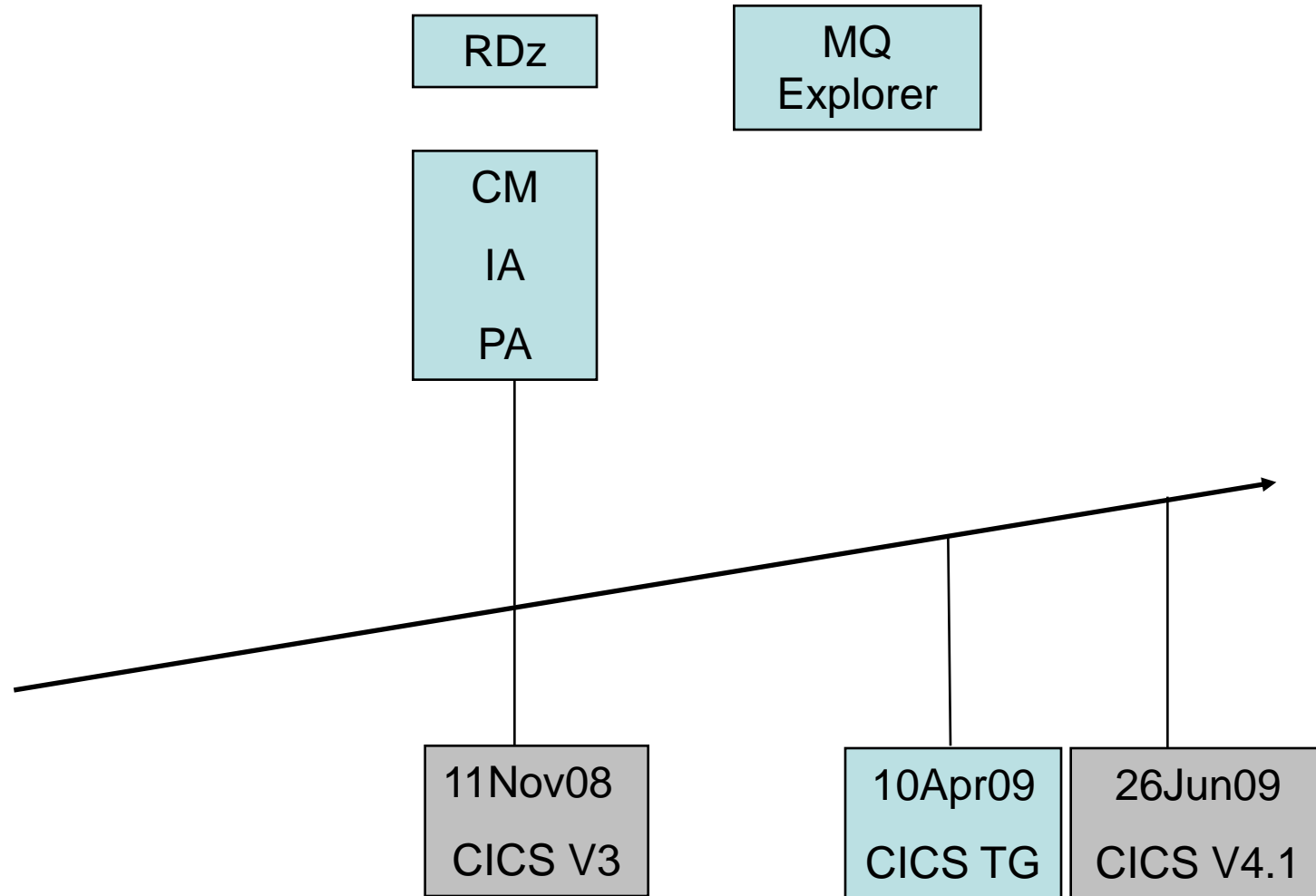
- CICS Management Client Interface (CMCI)
  - REST interface used by CICS Explorer
- CICSplex SM environment
  - Explorer uses CICSplex SM WUI server
  - Manage entire CICSplex from on Explorer connection
  - Including CICS TS V3 regions with V4.1 Explorer capabilities
- Single server environment (SMSS)
  - Configure CICS region for Explorer use
  - Manage a single region at a time

# CICS Explorer for CICS TS V4.1

*<V4 Demo>*



# Explorer Integration



## CICS Explorer – Integration Platform

- CICS Tools
  - CICS Interdependency Analyzer (IA)
  - CICS Configuration Manager (CM)
  - CICS Performance Analyzer (PA)
- Rational Developer for System z
- CICS Transaction Gateway
- WebSphere MQ (PoC)
- Tivoli OMEGAMON for CICS (PoC)
- Custom plug-in's

# End of Part 1

# Any Questions so far?



## IBM CICS® User Conference 2009