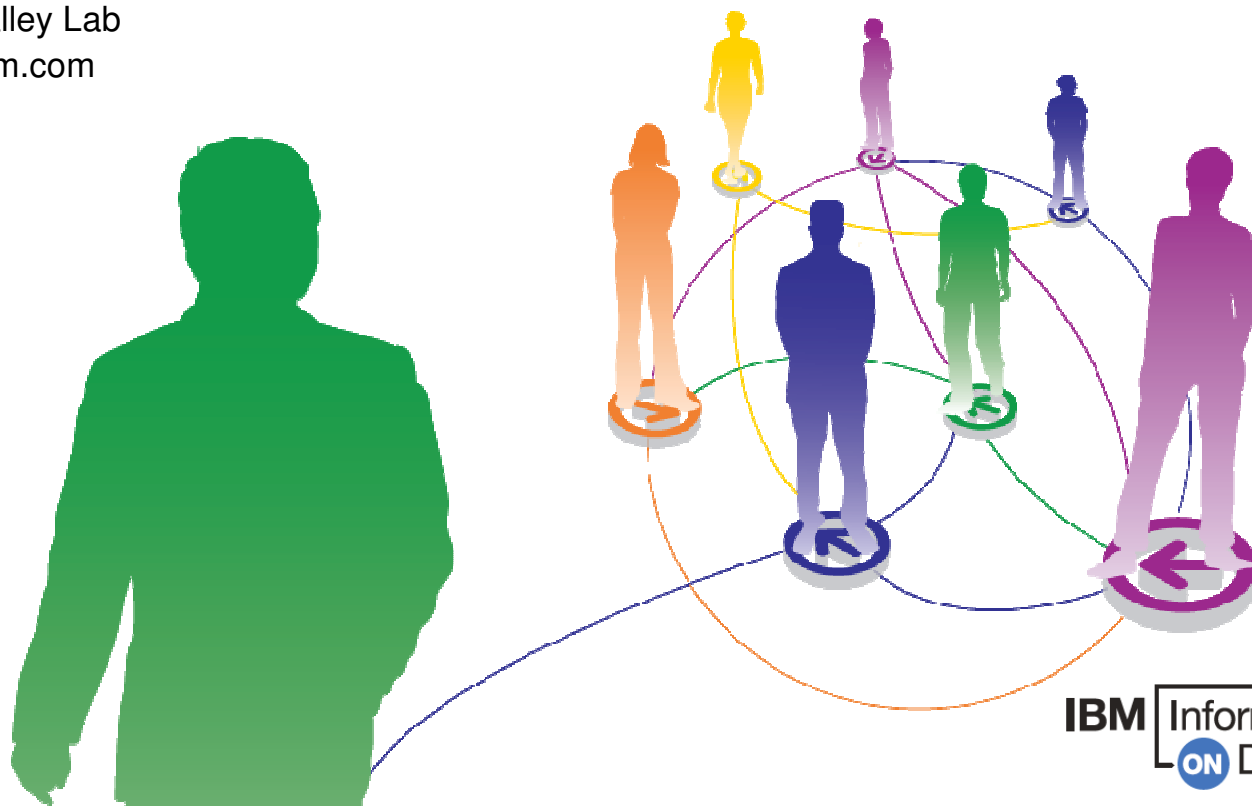


Introduction to Data Warehousing on System z

Presenter: Mike Biere
IBM WW Marketing Mgr.
IBM Silicon Valley Lab
mbiere@us.ibm.com
Session: 005



INFORMATION-LED
TRANSFORMATION



LEAD
THE WAY



IBM

January 21 - SINGAPORE • January 26 – MALAYSIA • January 28 - THAILAND



Son ... someday you will make a girl very happy for a short period of time. Then she'll leave you and be with new men who are ten times better than you could ever hope to be ... these men are called musicians



Disclaimer

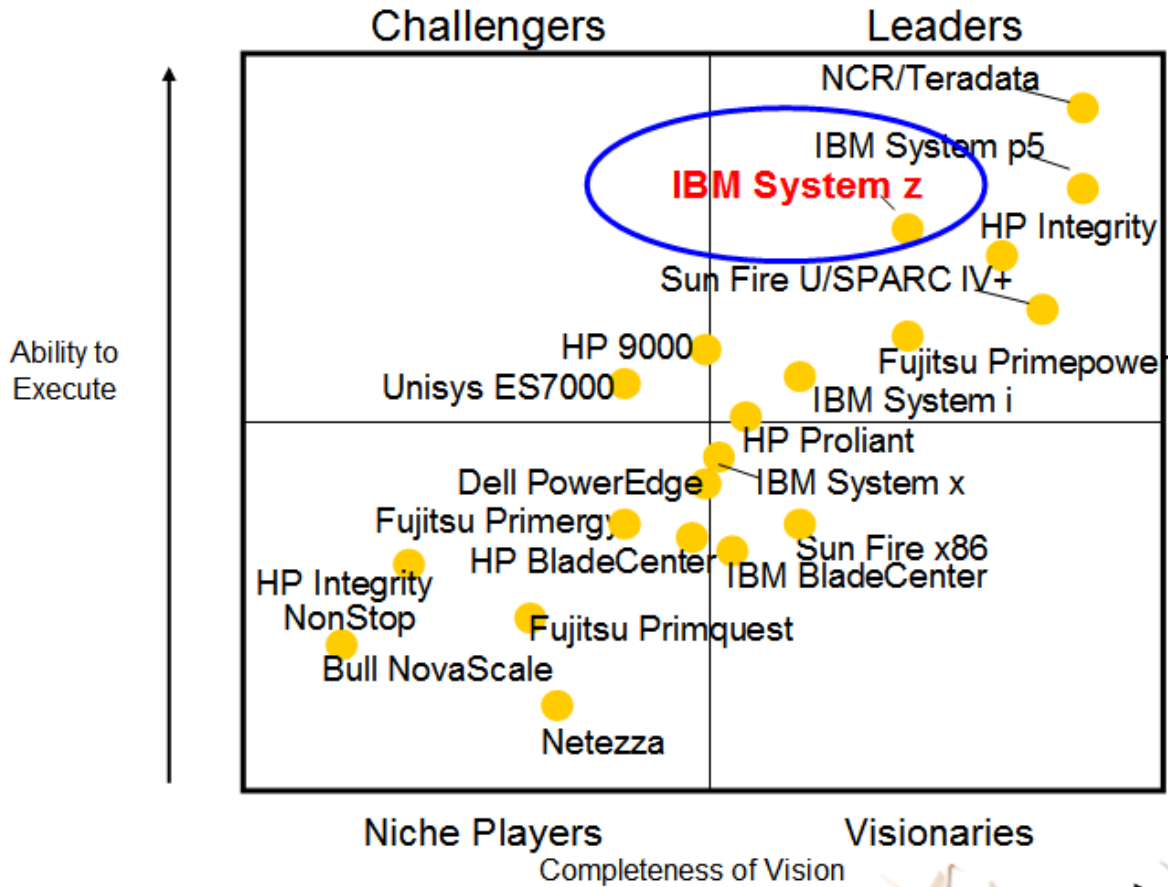
© Copyright IBM Corporation [current year]. All rights reserved.

U.S. Government Users Restricted Rights - Use, duplication or disclosure restricted by GSA ADP Schedule Contract with IBM Corp.

THE INFORMATION CONTAINED IN THIS PRESENTATION IS PROVIDED FOR INFORMATIONAL PURPOSES ONLY. WHILE EFFORTS WERE MADE TO VERIFY THE COMPLETENESS AND ACCURACY OF THE INFORMATION CONTAINED IN THIS PRESENTATION, IT IS PROVIDED “AS IS” WITHOUT WARRANTY OF ANY KIND, EXPRESS OR IMPLIED. IN ADDITION, THIS INFORMATION IS BASED ON IBM’S CURRENT PRODUCT PLANS AND STRATEGY, WHICH ARE SUBJECT TO CHANGE BY IBM WITHOUT NOTICE. IBM SHALL NOT BE RESPONSIBLE FOR ANY DAMAGES ARISING OUT OF THE USE OF, OR OTHERWISE RELATED TO, THIS PRESENTATION OR ANY OTHER DOCUMENTATION. NOTHING CONTAINED IN THIS PRESENTATION IS INTENDED TO, NOR SHALL HAVE THE EFFECT OF, CREATING ANY WARRANTIES OR REPRESENTATIONS FROM IBM (OR ITS SUPPLIERS OR LICENSORS), OR ALTERING THE TERMS AND CONDITIONS OF ANY AGREEMENT OR LICENSE GOVERNING THE USE OF IBM PRODUCTS AND/OR SOFTWARE.

Gartner's Data Warehouse DBMS Server Magic Quadrant

August 2006



Mission-Critical Data Warehousing

Analysts Predict Move to Right-Time BI

By 2012, BI Platform capabilities will be embedded as a service within **75% of new business applications**.

By 2012, emerging technologies will significantly drive adoption of **BI to 50% of business users**

(e.g. interactive visualization, in-memory analytics, search, SaaS and SOA)

Source : Gartner BI Summit 2008, 4/2008



Embedded Analytics

Dashboards

Mash ups

Financial Planning

Scorecards

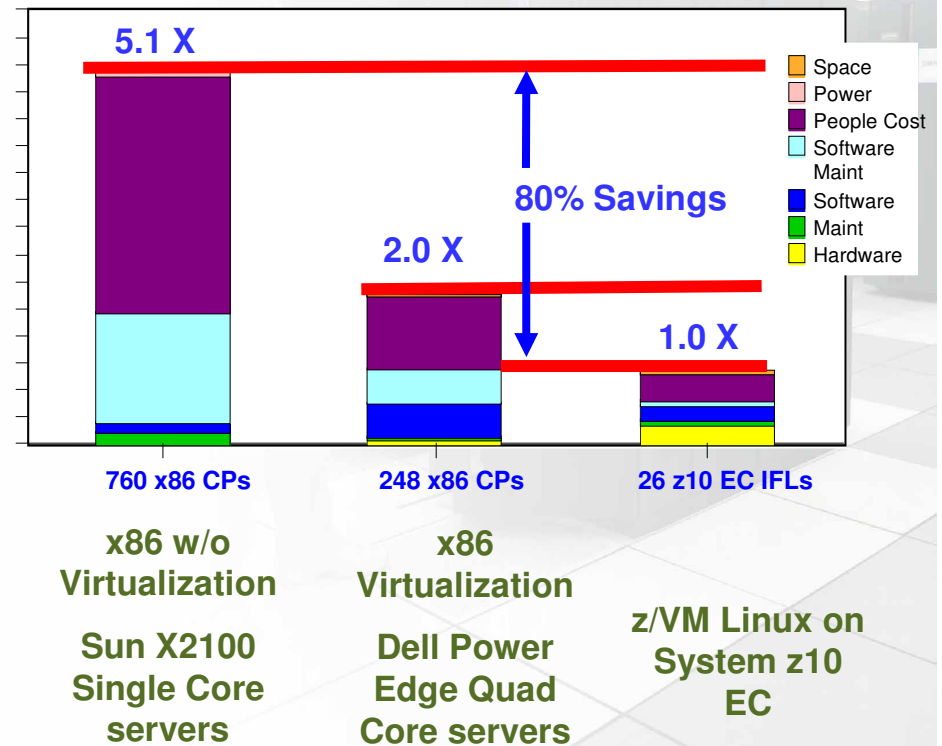
Cost Savings

Your IT Cost may vary:

- Up to 80% Saving in IT Cost
- Up to 96% Less Hardware
- 760 x86 Processor Cores vs 26 IFLs
- Potential for dramatic reductions in software expense for processor based licenses
- Potential reductions in power and cooling
- Up to 93% Savings in KWatts and Energy Costs in this scenario**
- Up to 46% Less Space
- Up to 89% People savings
- Increased processor utilization
- Industry leading Security

Consolidating 760 Linux servers
z/VM Virtualization versus x86
Oracle DB Workload
3-Year Total IT Cost

**\$56 M Savings versus
x86 without Virtualization**



Energize your IT savings with z10 EC.

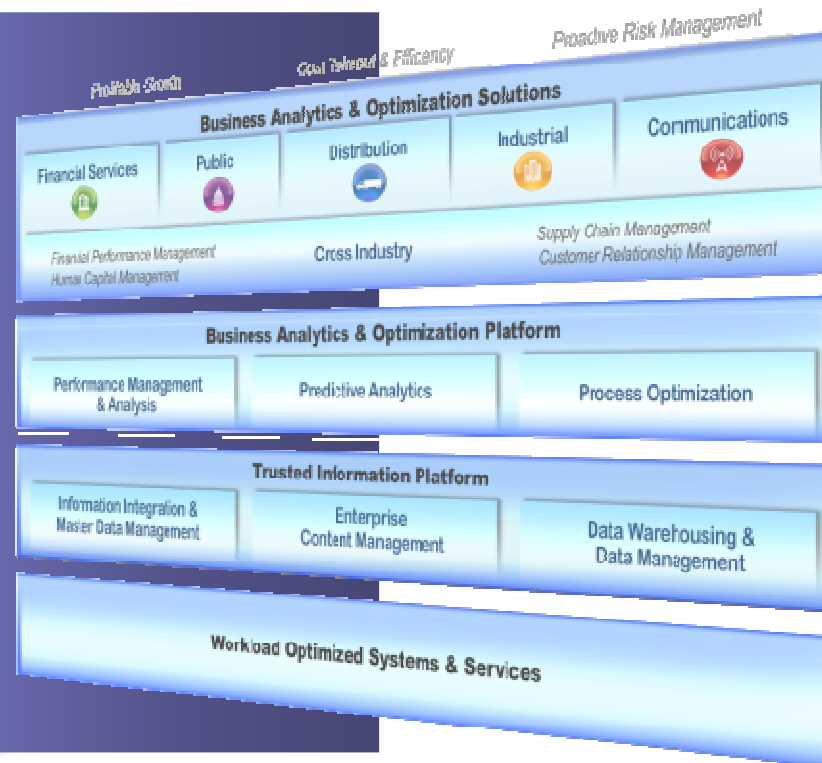
IBM is investing to accelerate your information-led transformation

Over **\$12B** in software investments since 2005

Over **4,000** Dedicated Consultants

Analytics in a Box to Accelerate Time to Value

Largest Math Department in Private Industry

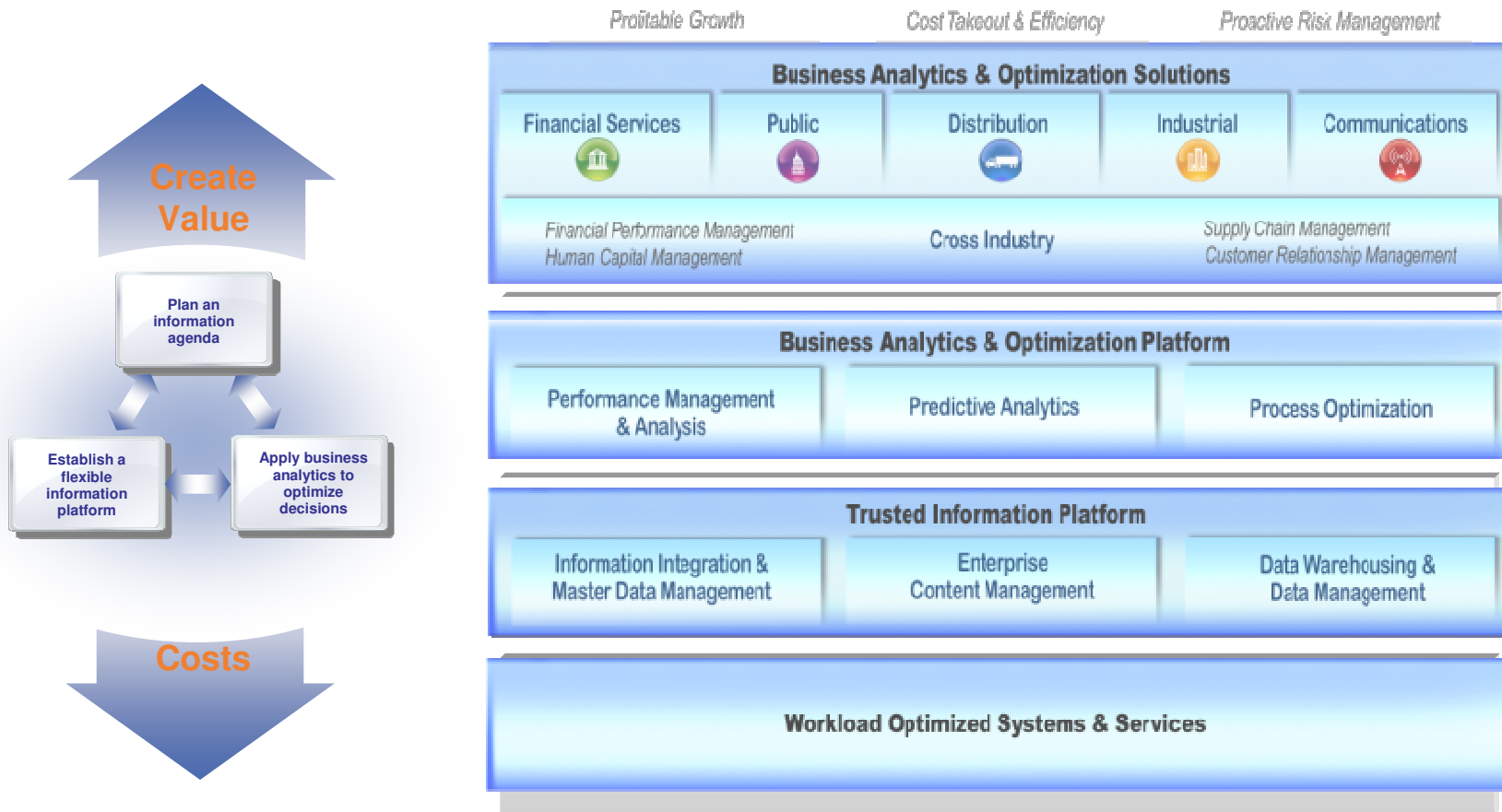


“Since 2006, IBM has deliberately & doggedly constructed an unparalleled portfolio... it’s difficult to see how any competitors will be able to compete anytime soon...”



“IBM, not SAP or Oracle, is now the industry’s premo analytics solution/platform vendor...”

Getting started with an information-led transformation



60%+ of CEOs:
Need to do a better job
leveraging information

30%+ of Execs:
time spent searching
for information

70% of employee time:
Spent searching for relevant
information

Data and Dynamic Warehousing- Some Definitions

→ Data Warehousing

- Provides the underlying data storage facilities required to support any BI Solution.

→ An Operational Data Store (ODS)

- A subject oriented database organized by business area. It is up to date (vs. historical) and detailed (vs. summarized).

→ A Data Warehouse (DW or sometimes WH)

- A multi-subject oriented database populated from operational systems and/or ODS's. It is historical (vs. point-in-time) in nature and typically contains detailed data. It is often looked upon as the single source of corporate "truth".

→ A Data Mart (DM)

- A database designed to support the analysis of a particular business subject area. Data has usually been transformed and aggregated from the source DW or operational system. Data Marts can be relational, multidimensional (OLAP) or statistical in nature.

Data and Dynamic Warehousing- Some Definitions

→ Star-schema or “snowflake” design

- Structures where data is organized for BI queries in the form of a centralized ‘fact’ table that houses values and surrounding ‘dimension’ tables that contain levels within the enterprise (Product, Department, Time, etc.)

→ Dynamic Warehousing

- The next generation of data warehousing to improve customer service, optimize business processes and identify trends and insights for competitive advantage. Emphasis upon unilateral access to data in all formats (structured as well as unstructured, XML, etc.)

→ Operational Business Intelligence (aka Operational Intelligence)

- Delivering BI analytics to operations-based individuals ... the 85% not serviced today ... a VERY sweet spot for System z

Challenges for Traditional Warehousing

Not just for traditional query and reporting purposes anymore

- Must address expanding needs for business insight
- Must serve increasing number and types of applications
- Must support varying service level demands



Increasingly **mixed workload** environments and **constantly changing needs** of different business constituents require more **dynamic** and **balanced** warehousing capabilities

Dynamic Warehousing with System z

Mission-critical analysis of operational data

Rapid and secure user-access to data analysis

→ *Interactive executive dashboards and information portals*

Improved query and reporting optimizations

→ *SQL Procedures may be run on zIIP*

Up to 50% reduction of storage for indexes

→ *Improved index compression*

Up to 50% reduction of CPU utilization

→ *Across most utilities*



Over 1 Billion per Hour
UPS runs DB2 for z/OS to support the
world's largest known peak database workload
- 1.1 Billion SQL statements per hour! ⁽¹⁾

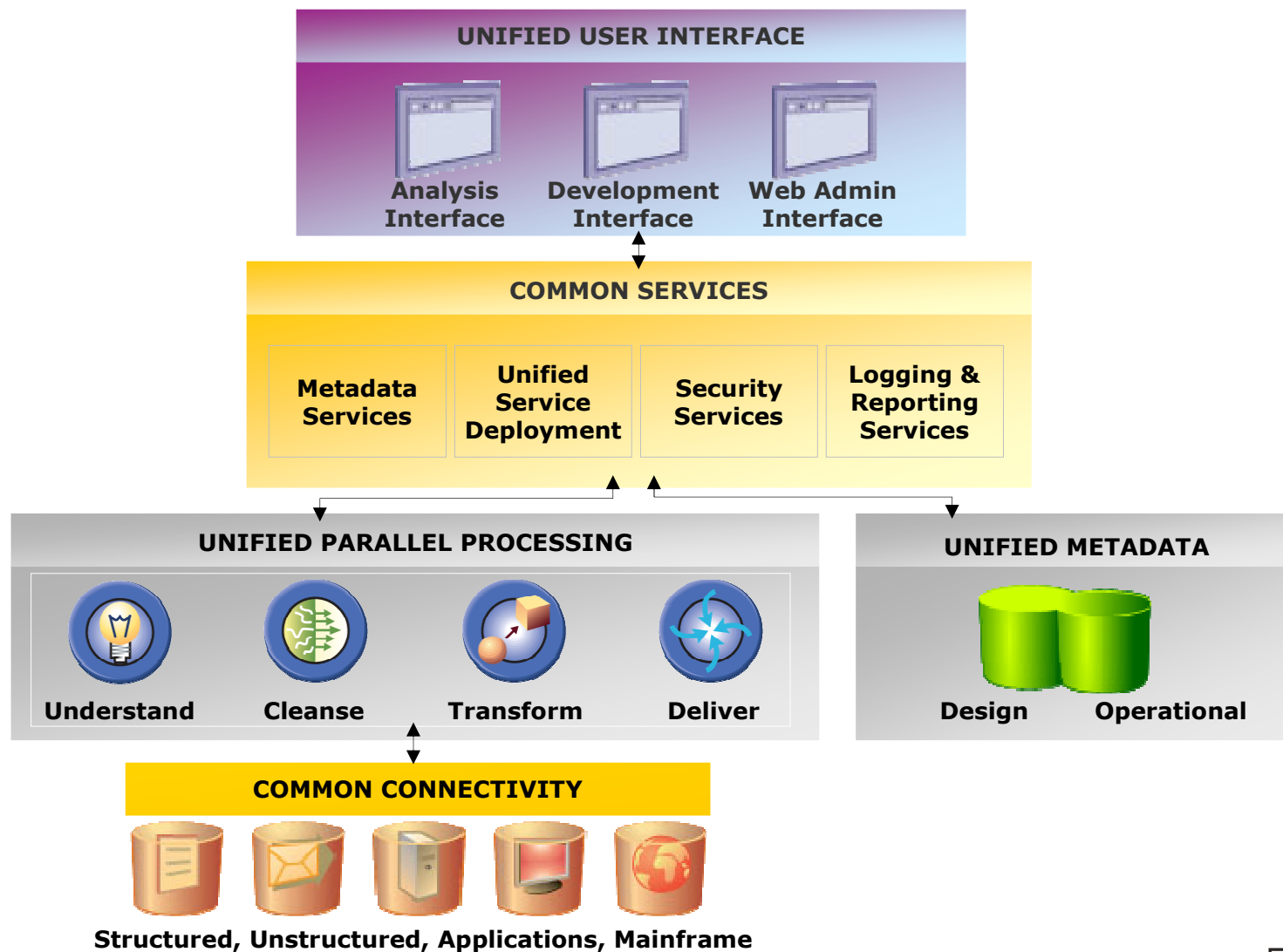


The InfoSphere Information Server

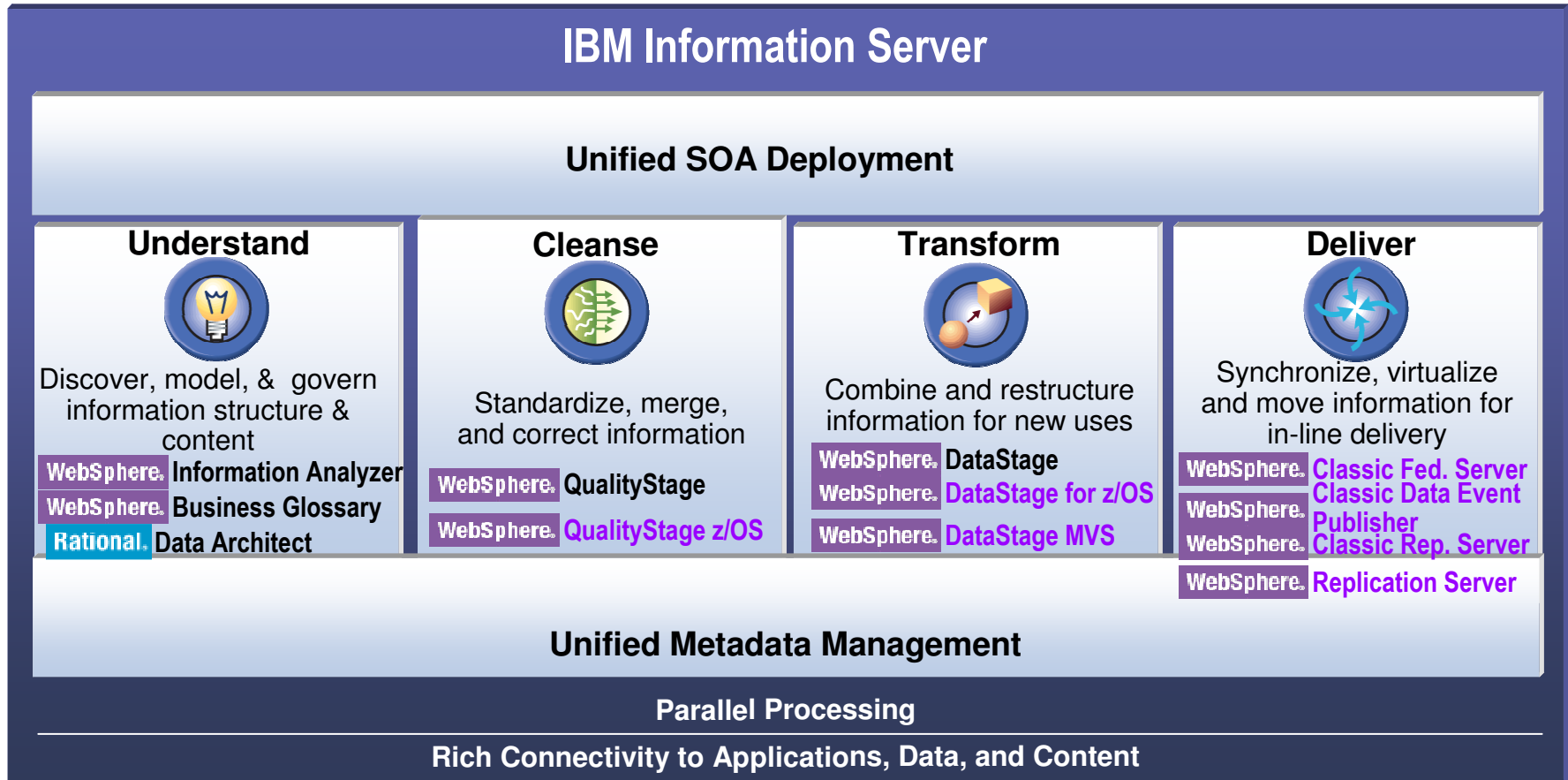
Building the Data Warehouse



IBM Information Server Architecture




First ... provide an Infrastructure to enable DW IBM Information Server - for Linux on System z




Physical Metadata: IBM WebSphere Information Analyzer

- Data-centric analysis of application, database and file-based sources
- Secure, detailed profiling of fields, across fields, and across sources
- Creation of metadata from profiling results
- Results instantly promotable across IBM Information Server




Subject Matter Experts



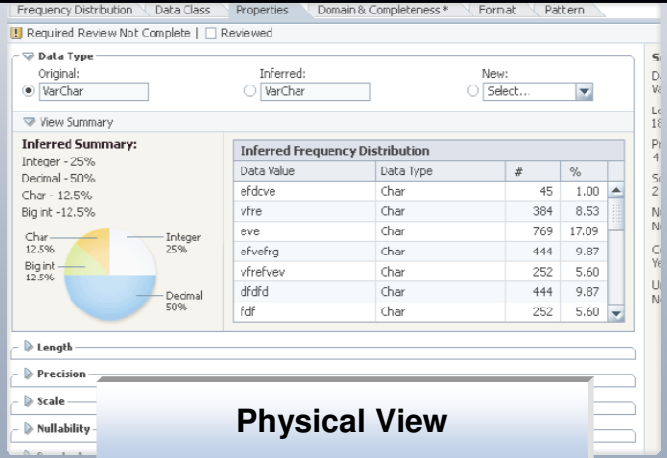
Data Analysts

Understand



IBM WebSphere Information Analyzer

Analyze source data structures, and monitor adherence to integration and quality rules



Physical View

Business Metadata: IBM WebSphere Business Glossary

- Web-based authoring, managing & sharing of business metadata
- Aligns the efforts of IT with the goals of the business
- Provides business context to information technology assets
- Establishes responsibility and accountability

Database = DB2

Schema =
NAACCT

Table =
DLYTRANS

Column =
ACCT_NO

data type =
char(11)



Technical



Business

GL Account
Number

The ten digit
account number.
Sometimes
referred to as
the account ID.
This value is of
the form L-
FIIIIVVVV.



Subject Matter
Experts



Business
Users

Understand



IBM WebSphere Business Glossary

Create and manage business
vocabulary and relationships, while
linking to physical sources

Logical Metadata: Rational Data Architect

- Data modeling for data structures and federations
- Federated data discovery
- Metadata relationship discovery & mapping
- Impact analysis, and synchronization across models
- SQL & XML generation capabilities



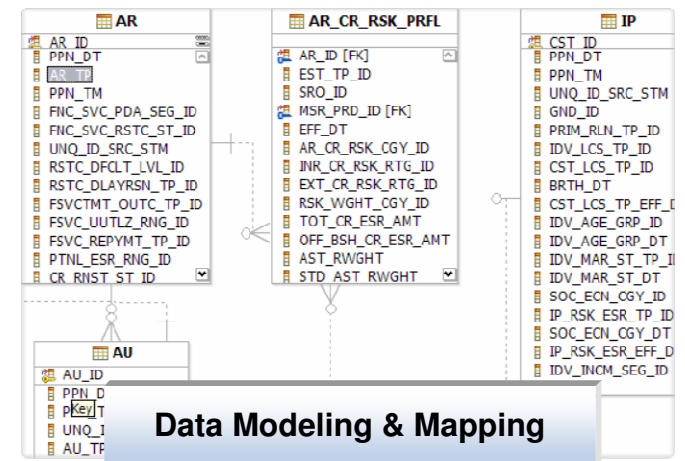
Subject Matter Experts



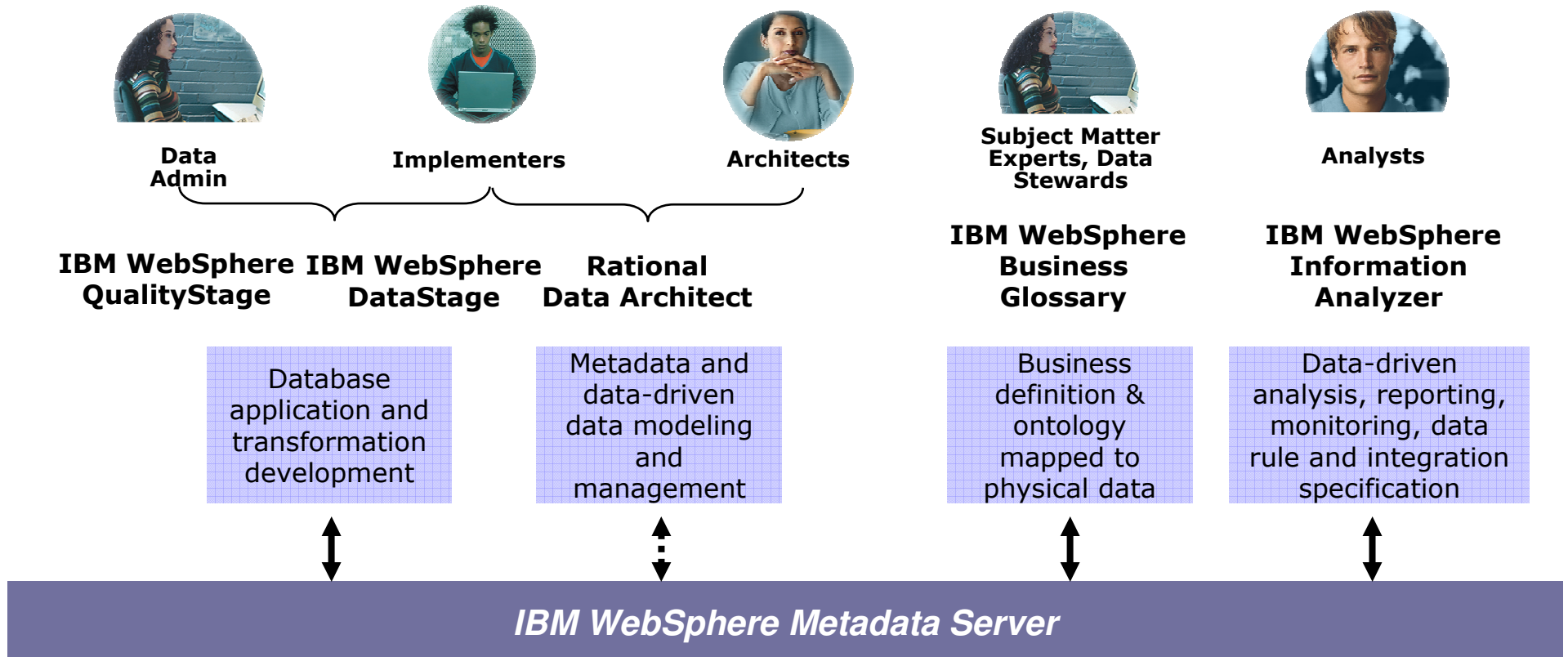
Architects

Rational Data Architect

Create and manage business vocabulary and relationships, while linking to physical sources

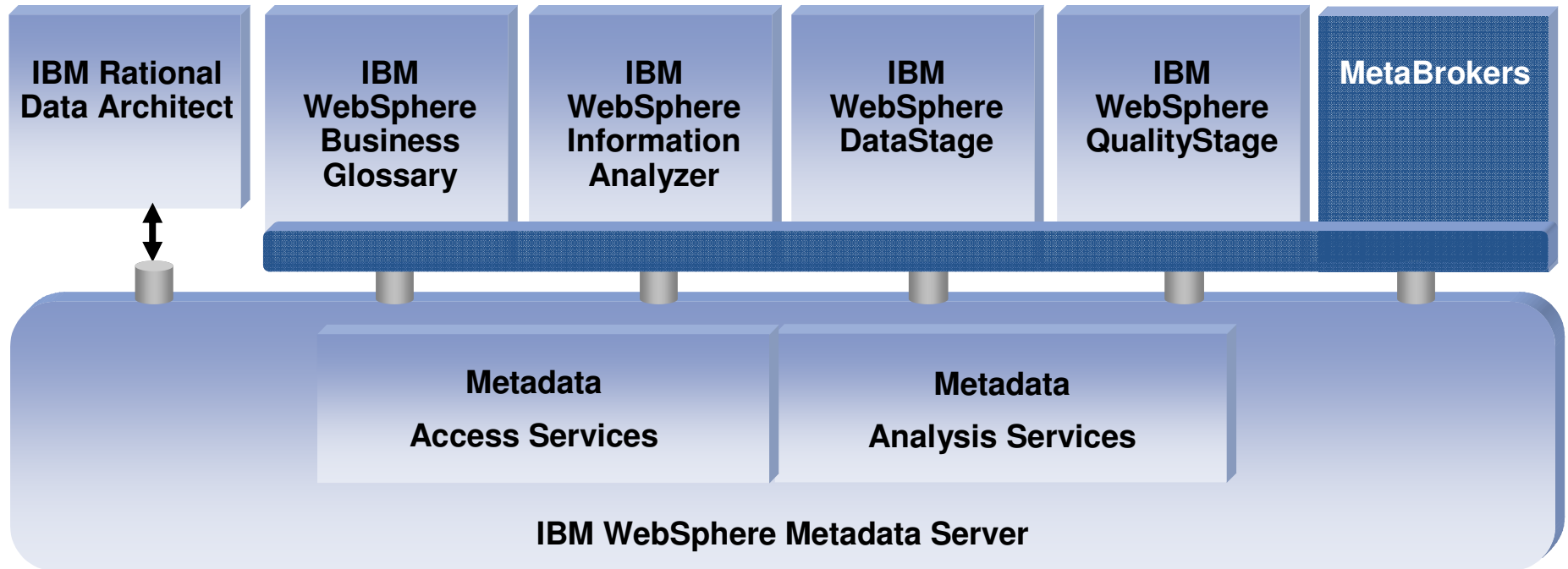


Role-Based Tools with Integrated Metadata



- **Simplify integration**
- **Facilitate change management & reuse**
- **Increase compliance to standards**
- **Increase trust and confidence in information**

IBM WebSphere Metadata Server – at the Core of IBM Information Server



Why Should I Care About Cleansing Information?

- **Lack of information standards**
 - Different formats & structures across different systems
- **Data surprises in individual fields**
 - Data misplaced in the database
- **Information buried in free-form fields**
- **Data myopia**
 - Lack of consistent identifiers inhibit a single view
- **The redundancy nightmare**
 - Duplicate records with a lack of standards

Kate A. Roberts 416 Columbus Ave #2, Boston, Mass 02116

Catherine Roberts Four sixteen Columbus APT2, Boston, MA 02116

Mrs. K. Roberts 416 Columbus Suite #2, Suffolk County 02116

Name	Tax ID	Telephone
J Smith DBA Lime Cons.	228-02-1975	6173380300
Williams & Co. C/O Bill	025-37-1888	415-392-2000
1st Natl Provident	34-2671434	3380321
HP 15 State St.	508-466-1200	Orlando

WING ASSY DRILL 4 HOLE USE 5J868A HEXBOLT 1/4 INCH
 WING ASSEMBY, USE 5J868-A HEX BOLT .25" - DRILL FOUR HOLES
 USE 4 5J868A BOLTS (HEX .25) - DRILL HOLES FOR EA ON WING ASSEM
 RUDER, TAP 6 WHOLES, SECURE W/KL2301 RIVETS (10 CM)

19-84-103 RS232 Cable 6' M-F CandS

CS-89641 6 ft. Cable Male-F, RS232 #87951

C&SUCH6 Male/Female 25 PIN 6 Foot Cable

90328574	IBM	187 N.Pk. Str. Salem NH 01456
90328575	I.B.M. Inc.	187 N.Pk. St. Salem NH 01456
90238495	Int. Bus. Machines	187 No. Park St Salem NH 04156
90233479	International Bus. M.	187 Park Ave Salem NH 04156
90233489	Inter-Nation Consults	15 Main Street Andover MA 02341
90345672	I.B. Manufacturing	Park Blvd. Bostno MA 04106

Data Cleansing: IBM WebSphere QualityStage

- Specialized data quality functions seamlessly integrated with DataStage
- Visual tools for defining complex matching and survivorship logic
- Ensures clean, standardized, de-duplicated information
- Enables a single version of the truth



Subject Matter Experts



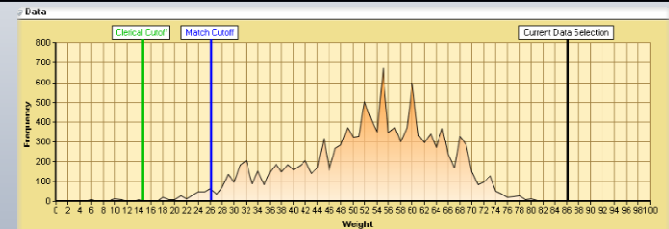
Data Analysts

Cleanse



IBM WebSphere QualityStage™

Standardize and correct source data fields, and match records together across sources to create a single view

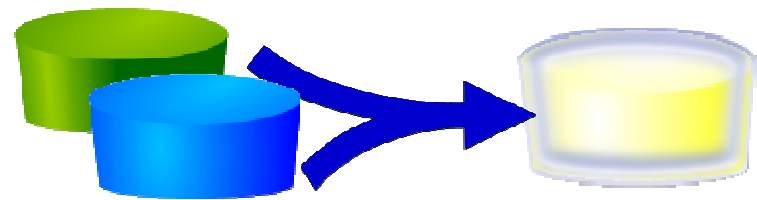


SorID	RecordType	PosidNumber	Wtgrph	GenderCode	FirstName	MiddleName
4111	XA	1	85.57	IM	DTIS	GARLAND
4111	DA	1	85.57	IM	DTIS	GARLAND
5211	XA	1	84.08	IM	NICHOLAS	I
5211	DA	1	84.08	IM	NICHOLAS	I
3420	XA	1	81.68	IM	CLAUD	LADALE
3420	DA	1	81.68	IM	CLAUD	LADALE
3420	XA	1	81.68	IM	CLAUD	LADALE
3420	DA	1	81.68	IM	CLAUD	LADALE
4836	XA		80.20	IM	CLIFF	H
4836	DA		80.20	IM	CLIFF	H
7338						DHIN
7338						CHIN
2282						GILLIS
2282						GILLIS
6970						4 CHICLLE
6970						7 CHICLLE

Visual Match Rule Design

What Is Important About Transformation & Delivery?

- Transformation is key to enabling information to be used in new business contexts – it needs to be metadata-driven
- Designed for use by information experts using the understanding imparted by the metadata
- Transformation and Delivery can be reused across multiple mechanisms
 - Large volume batch movement
 - Real-time event-driven response
 - Service-oriented architecture
 - Federated query



Data Analysts



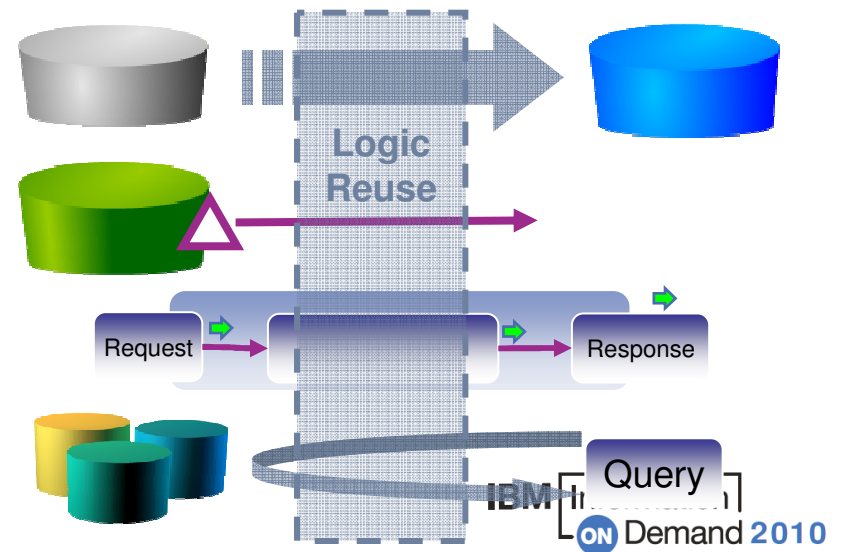
Data Architects



DBAs

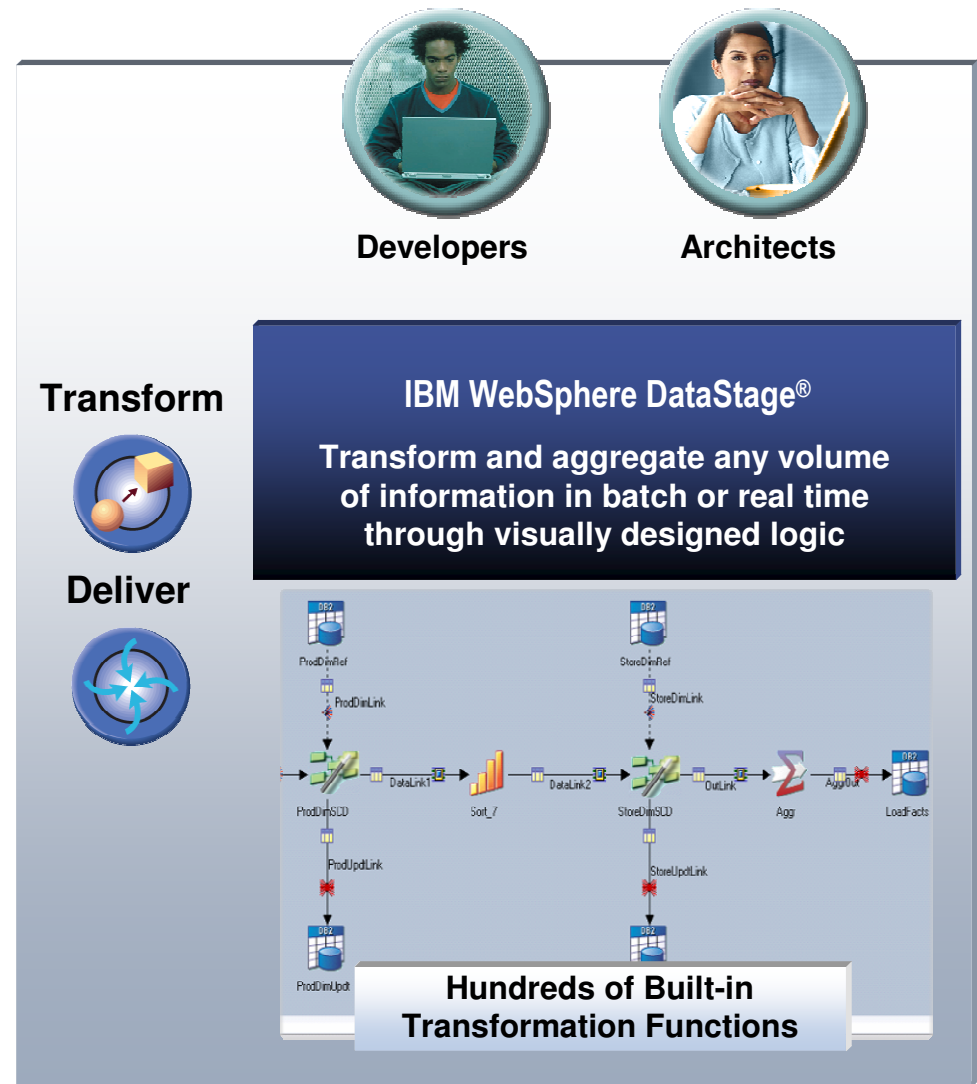


Subject Matter Experts



Data Transformation & Movement: IBM WebSphere DataStage

- Codeless visual design of data flows with hundreds of built-in transformation functions
- Optimized reuse of data integration objects
- Leverages parallel processing without requiring design changes
- Capable of supporting batch and real-time operations



Data Federation: IBM WebSphere Federation Server and Classic Federation

- Access diverse & distributed information as if it were in one system
- Industry leading query optimization with single sign-on, unified views, and function compensation
- Transactional write capabilities across heterogeneous sources
- Visual tools for federated data discovery & data modeling

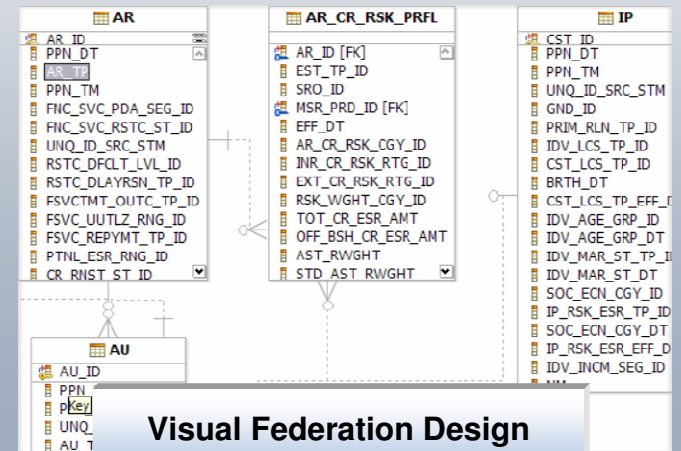
Deliver



IBM WebSphere Federation Server

Access and integrate heterogeneous information across multiple sources as if they were a single source

Extend value of existing analytical applications by providing real-time access to integrated information



Visual Federation Design

The IBM Information Server Advantage

A Complete Information Infrastructure

- A ***comprehensive, unified foundation*** for enterprise information architectures, scalable to any volume and processing requirement
- ***Auditable data quality*** as a foundation for trusted information across the enterprise
- ***Metadata-driven integration***, providing breakthrough productivity and flexibility for integrating and enriching information
- ***Consistent, reusable information services***—along with application services and process services, an enterprise essential
- Accelerated time to value with ***proven, industry-aligned solutions*** and expertise
- ***Broadest and deepest connectivity*** to information across diverse sources: structured, unstructured, mainframe, and applications

The InfoSphere Warehouse for System z

Enhancing the Data Warehouse



Key Component Overview - Warehouse for tooling DB2 for z/OS

→ Data Server Component – Prerequisite

- DB2 for z/OS -- Not included in the offering, prerequisite Application Server Components – Linux on System z Partition
- WebSphere Application Server
 - Manages/executes the SQW runtime processes
 - Server for the browser-based Admin Console
- SQW Runtime
 - Execution engine for SQW jobs (control flows, data flows)
 - Runs in the WAS environment
- Cubing Services engine
 - Cube server providing cube access to MDX clients through ODBO and XMLA
 - Cubing engine and cube optimizer ported to Linux on System z.

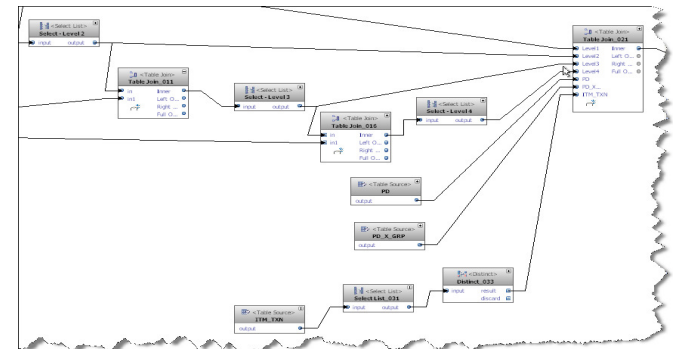
→ Design and Administration Client Components – Windows, Linux

- Design Studio, Eclipse-based design tool
 - Physical modeling based on Rational Data Architect (RDA)
 - SQW Data flow, control flow editor – extension of RDA
 - Cubing Services cube model editor, optimization tool – extension of RDA
- Admin Console, browser-based administration tool
 - Common admin tasks, data source, role-based security assignments
 - Cube metadata management (import/export)
 - Cube Server management (configure / start / stop, etc.)
 - SQW runtime job administration

SQW- Data Flows for in-database data movement and transformation

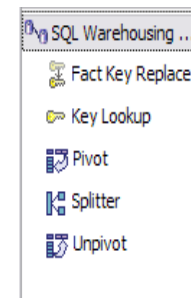
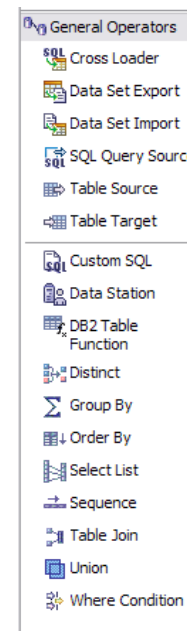
→ **Eclipse tool that generates SQL instructions, optimized for DB2, to move and transform data within the database**

- Ease of use, drag and drop UI for fast warehouse building
- Integrated with physical data model for source and target tables and other database objects
- Data flow for doing transformations: 30+ SQL operators optimized for DB2
 - Leverages DB2 functions for transformations 100+
 - Customize with User-Defined Functions or custom SQL
- Test and debug dataflows

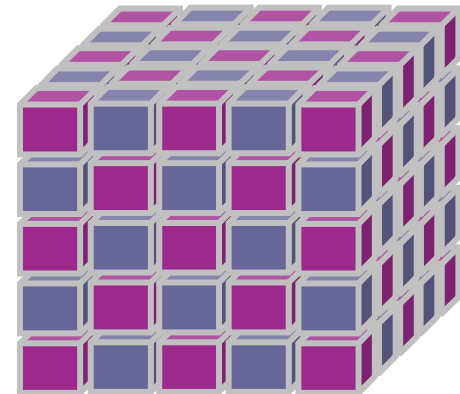


→ **Perform warehouse building in homogeneous “database” environment**

- Leverage existing database infrastructure
- Leverage existing DBA skills, reuse custom SQL code
- Native integration for fast BI application deployment
 - Database modeling and administration
 - Data Prep for in-database Report, Mining & OLAP
 - Analyze impact from tables to BI applications
 - Allow a team of BI designers to work together, and deal with changes quickly



OLAP - Cubing Services

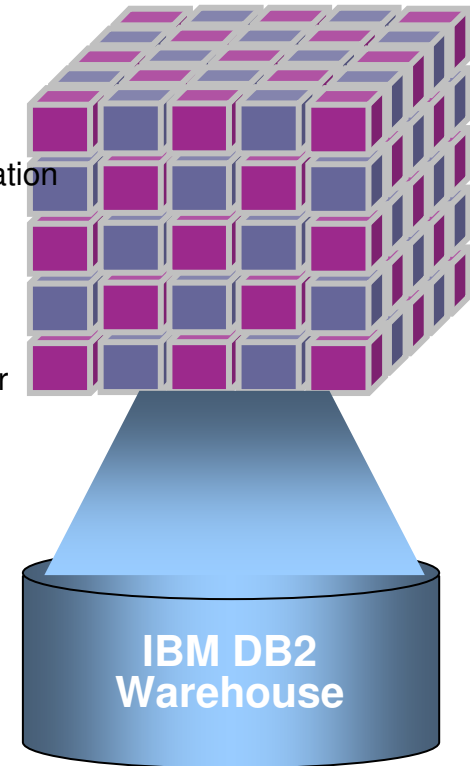


Cubing Services (OLAP)

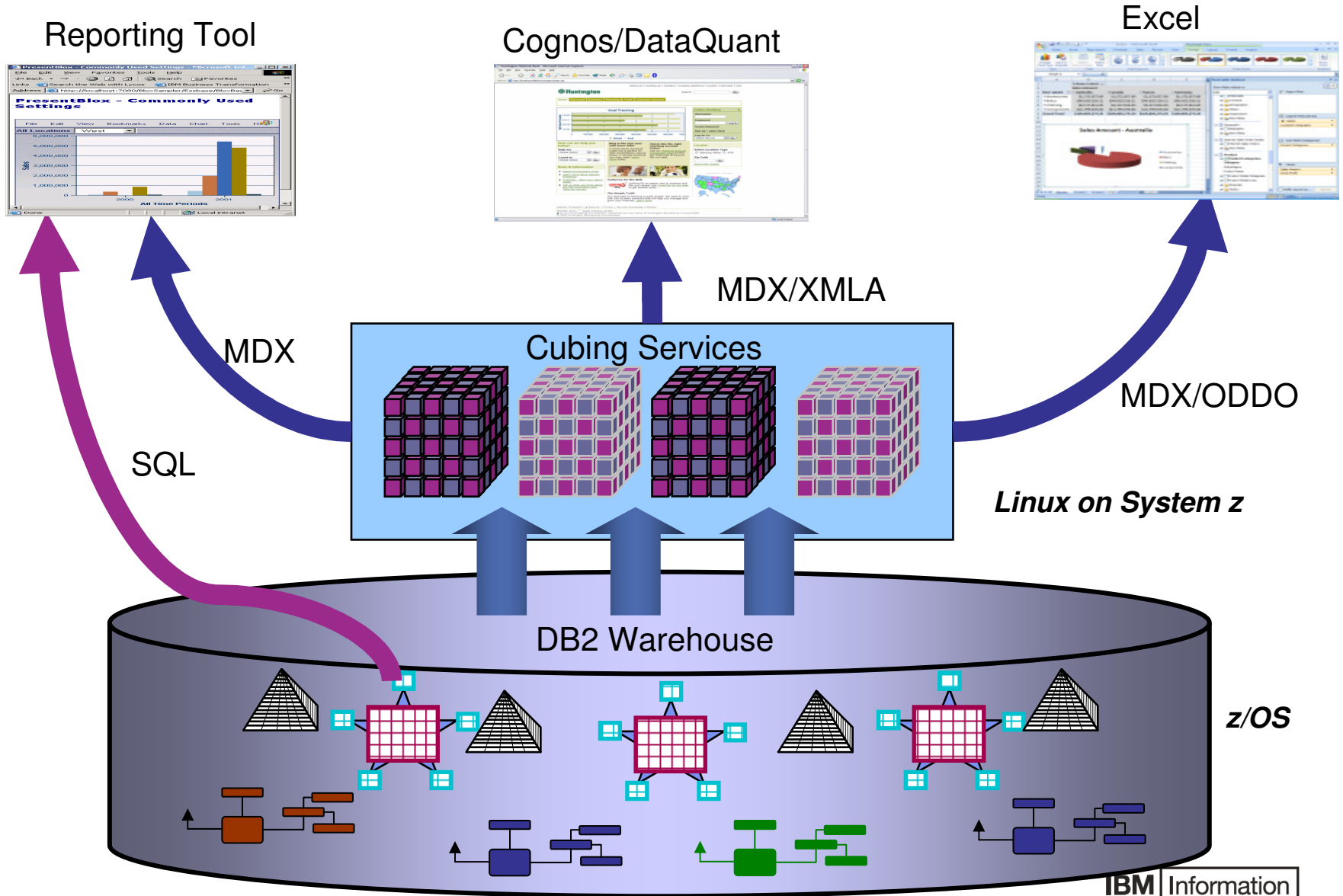
Cubing Services is a Multidimensional Analysis Server that enables OLAP applications access to Terabyte data volumes via industry standard OLAP connectivity

Benefits

- Uses industry standards OLAP Interfaces for access by a wide variety of tools for presentation and reporting
- Empowers users with ad hoc access to business information.
 - What is the profitability for Product A across the Branches X,Y,Z?
- Speed of thought access to OLAP data managed in a DB2 Data Warehouse. Thus for your DB2 Warehouse OLAP data there is:
 - OLAP and SQL shared access to the same information
 - Single point of Management
 - Single point of Maintenance
 - Single point of Performance Tuning
- Enables Access to up to 1 TB of base OLAP Data



Cubing Services - OLAP Analytics and Open Access



IBM Smart Analytics Optimizer

Technology Preview for System z

What is it?

- ✓ A high performance extension that easily integrates with IBM data systems, delivering predictable, order-of-magnitude faster, analytic query response times, while lowering operating costs

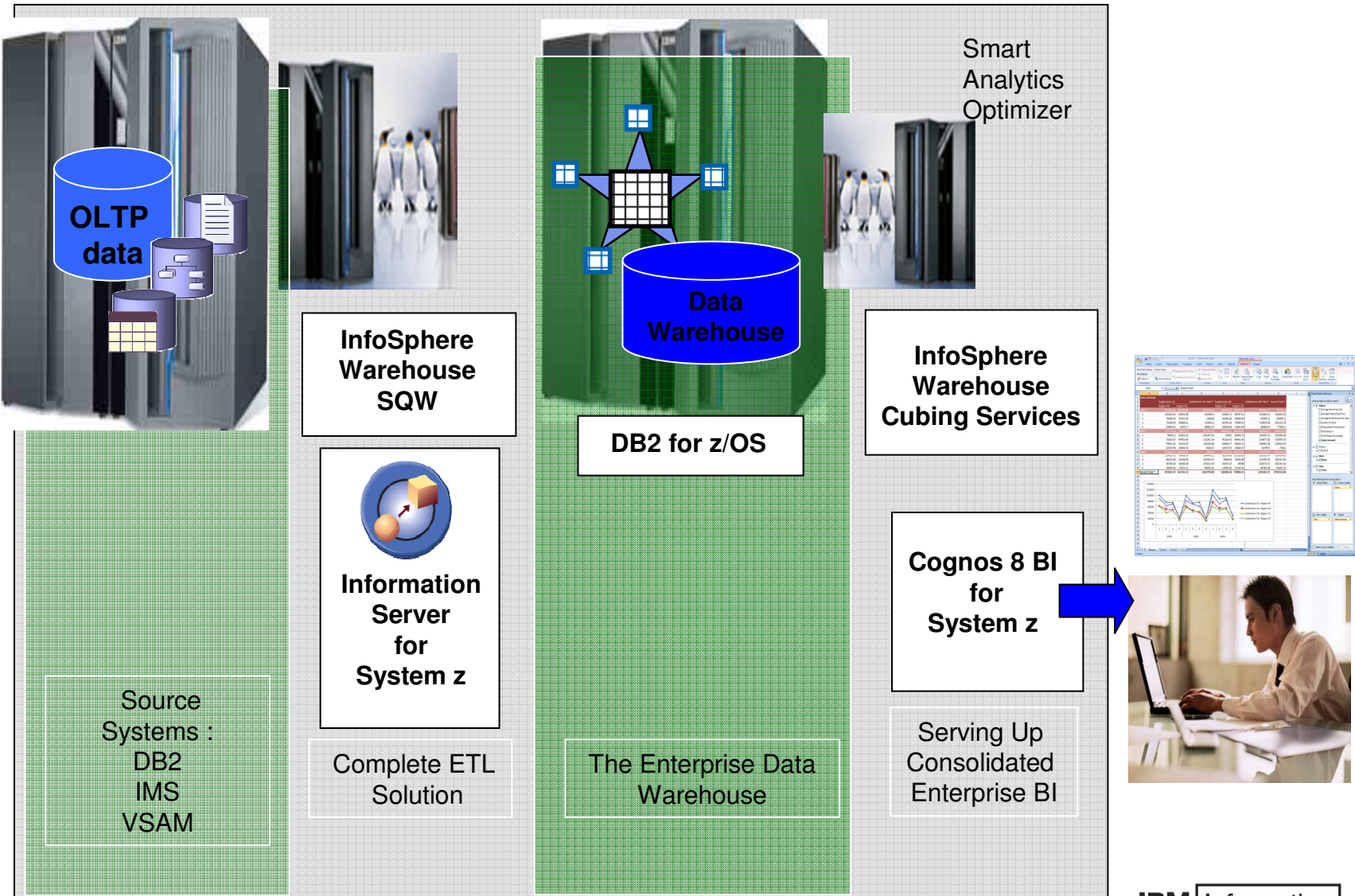


How is it different

- ✓ **Deep integration with IBM data management systems**
- ✓ **High performance query software, based on advanced data in-memory technologies**
- ✓ **Leveraging existing data system investment and values without any changes to applications**
- ✓ **For System z, extends gold-standard manageability, security, and availability to high-performance analytic applications**

Pre-announced now deferred to 2010

Data Warehouse and BI Architecture for System z





Summary

- We have enhanced the System z portfolio significantly to accommodate requests for data warehousing
- IBM's 2 major offerings on System z are
 - Information Server
 - InfoSphere Warehouse
- Data Warehousing is typically driven by Business Intelligence requirements
- DW is not a prerequisite for BI
- Without trusted information there will be a justified opening for continued, random, end user initiatives “outside the box”



Thank You!