

*A flexible and secure open system solution  
for network computing*



# IBM Distributed Computing Environment (DCE)

---

## Highlights

---

**Delivers a cross-platform distributed solution with security, directory and time services**

**Advances emerging Internet standards by incorporating public key infrastructure (PKI) and supporting Lightweight Directory Access Protocol (LDAP)**

**Simplifies administration with a Web browser-based interface**

**Enables enterprise growth for distributed processing, independent of hardware or software platforms**

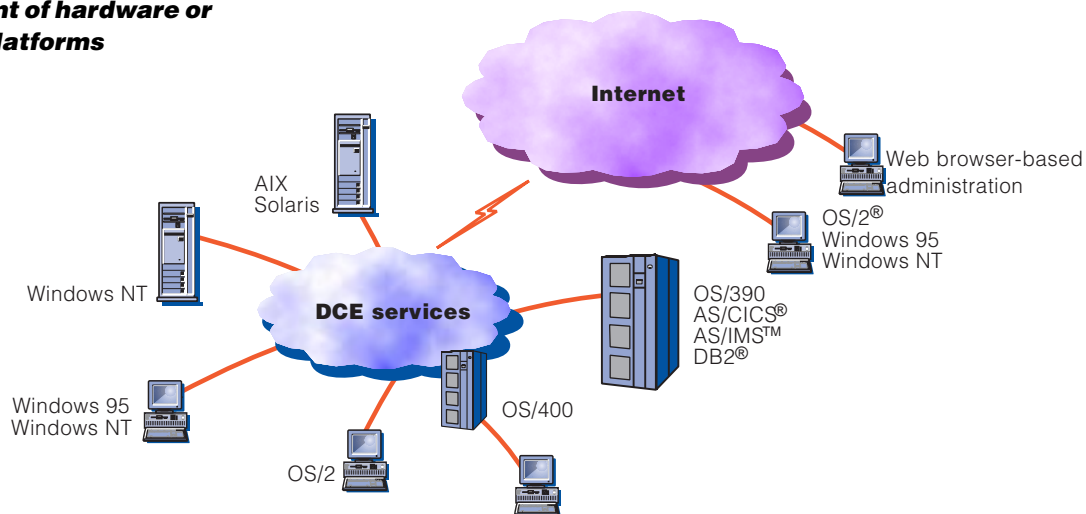
**Improves productivity for application programmers and administrators with capability to integrate any DCE-compliant software or hardware platform as part of your enterprise**

**Is Year 2000 ready**

## Technology built for the demands of the future

The IBM® Distributed Computing Environment (DCE) is a comprehensive suite of integrated, yet modular, products which support transparent file access and secure resource sharing in heterogeneous, networked computing environments. DCE is designed to provide easy migration to open client/server systems, and will become the basis of distributed computing in the 21st century.

With DCE, you can provide clients with secure access to Web servers and easy access to online directory services by incorporating industry-standard Internet technologies, such as PKI and LDAP.



*Distributed Computing Environment*

## Managing information resources

Take advantage of fast-growing e-business opportunities while making efficient use of your current hardware and software investment with the flexible, scalable advantage of IBM DCE.

The Web-based browser enables administrators to control enterprise-wide resources at any time from any location.

DCE provides your business with the capability to incrementally increase the computing power of local area networks (LANs) and wide area networks (WANs). The open system technology delivers full interoperability, compatibility with existing systems and security on all major operating platforms, including AIX®, OS/390®, OS/400®, Windows NT™ and Solaris.

IBM DCE allows users and administrators to share and manage up-to-date file resources with transparent file access across the enterprise.

## Secure distributed computing

DCE security service is based on the Kerberos technology from Massachusetts Institute of Technology. Beneath the surface is reliable, trusted third-party authentication technology that provides authentication, authorization and user account management services to ensure data integrity and confidentiality. These security facilities are replicated on multiple systems for the high availability your business needs.

## Reliable performance

DCE products are based on industry-standard technologies that IBM licenses from The Open Group.

DCE consists of a core set of distributed services that includes remote procedure call, threads, time, cell directory and security.

DCE Distributed File Service (DFS) provides uniform global name space, centralized administration, increased performance through client caching and data coherency between client cached data and servers.

DCE Directory Service improves user performance by allowing users to identify resources by name across a wide network of diverse systems.

## Flexibility – the key to the future

Free flow of information depends on the ability to access different applications on different computers in different networks.

DCE gives you the competitive advantage for future growth and change by providing flexible applications and industry-standard network computing technologies. With DCE as the connecting infrastructure, you can make efficient use of current computing investments through network scalability, reduce development and maintenance costs with centralized administration and integrate DCE-compliant systems with your distributed network.

DCE represents the network computing solution for today's secure distributed enterprise and tomorrow's e-business.

IBM DCE is Year 2000 ready\*.

## For more information

To find out more about the IBM eNetwork security and directory solution, contact your IBM representative or IBM business partner. Visit the DCE site at [www.software.ibm.com/enetwork/dce](http://www.software.ibm.com/enetwork/dce).



© International Business Machines Corporation 1998

IBM Corporation  
Department VK4A  
3039 Cornwallis Road  
Research Triangle Park, NC 27709

Produced in the United States of America  
9-98  
All Rights Reserved

AIX, CICS, DB2, IBM, IMS, OS/2, OS/390 and OS/400 are trademarks of International Business Machines Corporation in the United States and/or other countries.

Windows and Windows NT are trademarks of Microsoft Corporation.

Other company, product and service names may be trademarks or service marks of others.

\*Year 2000 ready means that the IBM Product, when used in accordance with IBM-associated documentation, is capable of correctly processing, providing and/or receiving the date data within and between the twentieth and twenty-first centuries, provided that all products (for example, hardware, software and firmware) used with the IBM Product properly exchange accurate date data with it.



Printed in the United States on recycled paper containing 10% recovered post-consumer fiber.



**For Position Only**

G325-3842-00