

The power to integrate people, applications and the Internet



# IBM SecureWay Directory

## Highlights

**Delivers cross-platform directory in AIX, OS/390, OS/400, Windows and Solaris operating environments**

**Supports LDAP Directory standards, Version 2 and Version 3 operations**

**Provides DB2 Universal Database as the engine for this highly scalable directory**

**Spans language boundaries by accessing multiple languages in the same directory**

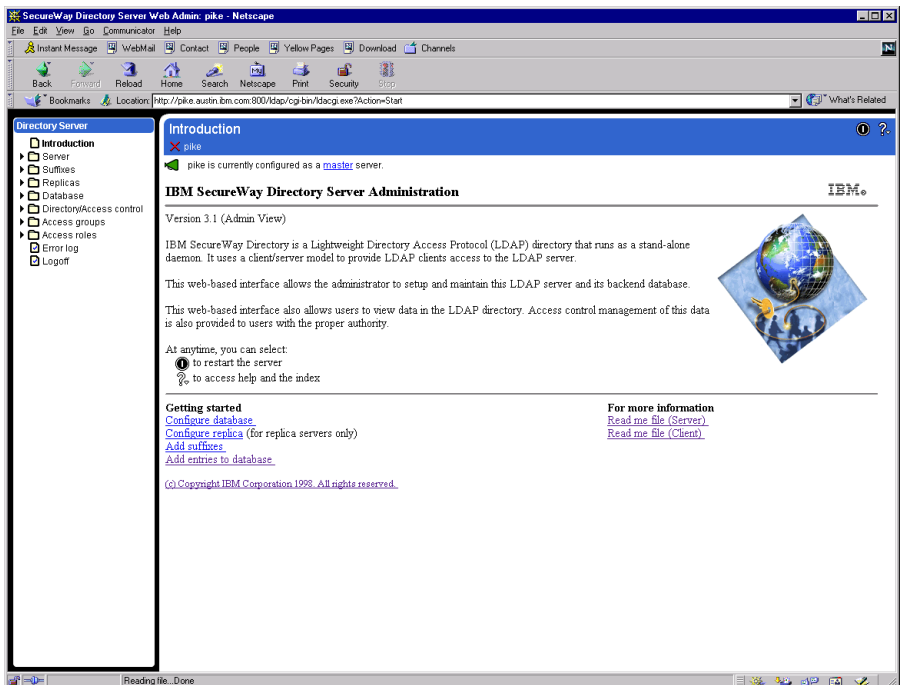
**Authenticates users with passwords, certificates or administrator-defined mechanisms**

**Delivers intelligent network support for dynamic data for configuration and security information**

**Is euro currency ready\***

IBM SecureWay® Directory is a powerful enterprise directory that securely stores user credentials as well as software and hardware configuration data. It also provides a service for publishing and

querying application information. As a foundation for implementing integrated security solutions for e-business, SecureWay Directory lets information find you.



IBM SecureWay Directory has a Web-based interface that simplifies setup and management of your directory.



e-business

SecureWay Directory is an open, cross-platform server optimized to support directory-enabled applications that integrate your enterprise systems. Providing a unified architecture that allows you to share data with people, applications and network resources, SecureWay Directory helps improve communication, speeds development and deployment of Web applications, and increases the security of your network.

To meet the high availability and performance needs of your enterprise, SecureWay Directory provides services for reliability and scalability few directory servers can match. Utilizing the power of IBM DB2® Universal Database™ and its transactional data store, the directory extends the performance and availability of DB2® to an enterprise directory service.

SecureWay Directory offers:

- High performance and scalability. SecureWay Directory can support millions of entries and thousands of LDAP clients.
- Secure Sockets Layer (SSL) support for the directory server and client. SSL provides data encryption and authentication using X.509V3 digital certificates. The directory server runs with or without SSL support.
- Replication support across platforms. This allows additional copies of the directory to be available for directory operations, increasing performance and access reliability.
- Redirection of directory operations to another SecureWay Directory or LDAP-compliant directory service. Redirection provides information integration and directory interoperability.

### **Universal repository**

By consolidating directory information, SecureWay Directory offers significant benefits including:

- Consolidating administration of application-specific side files
- Providing a central repository for digital certificates
- Delivering scalability and performance for extranet, intranet and Internet applications

### **Start easy, develop quickly**

SecureWay Directory can be administered and configured from a Web browser-based GUI. The administrator can:

- Perform initial setup of the directory
- Change configuration options
- Manage the daily operations of the directory

User access control is provided for information stored in the directory and can be defined by an administrator. From a Web browser, users can search for or add to information in the directory.

Client access to SecureWay Directory is supported using LDAP or HTTP protocols. LDAP client applications can be built for a wide range of platforms using SecureWay Directory Client SDK.

SecureWay Directory Client SDK consists of:

- LDAP, Version 3, client for Java™ software that supports Java Naming and Directory Interface (JNDI)
- LDAP-shared library
- C-header files
- Sample programs
- Documentation for the LDAP application programming interfaces

You can develop LDAP client applications that provide secure access to SecureWay Directory using SSL technology. Implementations of SSL, which employ RSA software, allow LDAP server access with data confidentiality.

### **Open Internet standards**

SecureWay Directory is an open, standards-based solution. SecureWay Directory supports several industry initiatives, such as Internet Engineering Task Force (IETF), Desktop Management Task Force (DMTF), Network Applications Consortium (NAC) and Directory Enabled Networks (DEN). SecureWay Directory implements the following IETF Request for Comments (RFCs):

RFC 1777 Lightweight Directory Access Protocol

RFC 1778 String Representation of Standard Attribute Syntaxes

RFC 1779 String Representation of Distinguished Names

RFC 1823 LDAP Application Program Interface

RFC 2052 A DNS RR for specifying the location of services (DNS SRV)

RFC 2219 Use of DNS Aliases for Network Services

RFC 2222 Simple Authentication and Security Layer (SASL)

RFC 2251 Lightweight Directory Access Protocol (V3)

RFC 2252 Lightweight Directory Access Protocol (V3): Attribute Syntax Definitions

### **Platform support**

Available on multiple platforms, SecureWay Directory helps you leverage your existing investments in hardware, software and networking infrastructure. Whatever your environment or application, IBM has the solutions to take you there. SecureWay Directory runs in the following operating environments:

- IBM AIX®, Version 4.2.1 or higher
- IBM Security Server for OS/390® Release 5 or higher
- IBM OS/400®, Version 4 Release 3 or higher
- Microsoft® Windows NT® 4.0
- Sun Solaris™ operating environment 2.5.1 and 2.6

### **Software requirements**

The following Web servers can use the Web-based administration of SecureWay Directory:

- Apache HTTP Server 1.3.2 and 1.3.3
- IBM HTTP Server
- Domino Go Webserver™ 4.6.2
- Microsoft Internet Information Server 4.0
- Netscape Enterprise Server 3.5.1
- Netscape FastTrack Server 3.01

### **Service you can depend on**

You can rely on the top-rated global service and support of IBM and our worldwide network of IBM Business Partners, helping you maximize the return on your SecureWay Directory infrastructure investment.

## Directory-enabled solutions from IBM, Lotus and Tivoli

IBM SecureWay Directory is offered as part of several different IBM operating systems, middleware applications and security solutions, including:

- IBM AIX
- IBM DB2 Universal Database
- IBM Distributed Computing Environment (DCE)
- IBM Suites
- IBM MQSeries®
- IBM Net.Commerce
- IBM Nways® Manager
- IBM OS/2®
- IBM OS/390
- IBM OS/390 C/C++
- IBM OS/400
- IBM SecureWay Communications Server
- IBM SecureWay Firewall
- IBM SecureWay FirstSecure
- IBM SecureWay FirstSecure Toolbox
- IBM SecureWay Host On-Demand
- IBM SecureWay Meta Directory
- IBM SecureWay Policy Director
- IBM SecureWay Trust Authority
- IBM SecureWay Vault Registry
- IBM VisualAge® for C++
- IBM VisualAge for Java
- IBM WebSphere™ Application Servers
- Lotus Domino
- Lotus Notes
- Tivoli® IT Director
- Tivoli On-Demand Server
- Tivoli User Administration

## Open for trusted e-business with IBM SecureWay FirstSecure

IBM SecureWay FirstSecure enables companies to build and operate secure and trusted environments to conduct e-business. FirstSecure offers an integrated, policy-driven solution for your IT security needs, including digital identities, network boundary protection, detection for viruses and intrusions, and tools for developing secure applications. IBM SecureWay Directory can be purchased as a component of IBM SecureWay FirstSecure.

### For more information

For more information about IBM SecureWay Directory, visit:  
[www.ibm.com/secureway/directory](http://www.ibm.com/secureway/directory)

To learn more about IBM SecureWay FirstSecure, visit:  
[www.ibm.com/software/security/firstsecure](http://www.ibm.com/software/security/firstsecure)



© International Business Machines Corporation 1999

IBM Corporation  
Department VK4A  
3039 Cornwallis Road  
Research Triangle Park, NC 27709

Produced in the United States of America  
10-99  
All Rights Reserved

AIX, DB2, DB2 Universal Database, the e-business logo, IBM, MQSeries, Nways, OS/2, OS/390, OS/400, SecureWay, VisualAge and WebSphere are trademarks of International Business Machines Corporation in the United States, other countries or both.

Domino Go Webserver is a trademark of Lotus Development Corporation in the United States, other countries or both.

Tivoli is a trademark of Tivoli Systems Inc. in the United States, other countries or both.

Microsoft and Windows NT are trademarks of Microsoft Corporation in the United States, other countries or both.

Java, all Java-based trademarks and logos, and Solaris are trademarks of Sun Microsystems, Inc. in the United States, other countries or both.

Other company, product and service names may be trademarks or service marks of others.

\* EuroReady means that the IBM product, when used in accordance with IBM-associated documentation, is capable of correctly processing monetary data in the euro denomination and of respecting the euro currency formatting conventions (including the euro sign), provided that all other products (for example, hardware, software and firmware) used with the IBM product are also EuroReady.



Printed in the United States on recycled paper containing 10% recovered post-consumer fiber.



G325-3813-03