

The power to integrate people, applications and the Internet



SecureWay Directory, Version 3.1

Highlights

Delivers cross-platform directory on AIX, OS/390, OS/400, Solaris and Windows NT

Supports LDAP Directory standards, Version 2 and Version 3 operations

Provides DB2 Universal Database as the engine for this highly scalable directory

Spans language boundaries by storing multiple languages in the same directory

Authenticates users with passwords, certificates or administrator-defined mechanisms

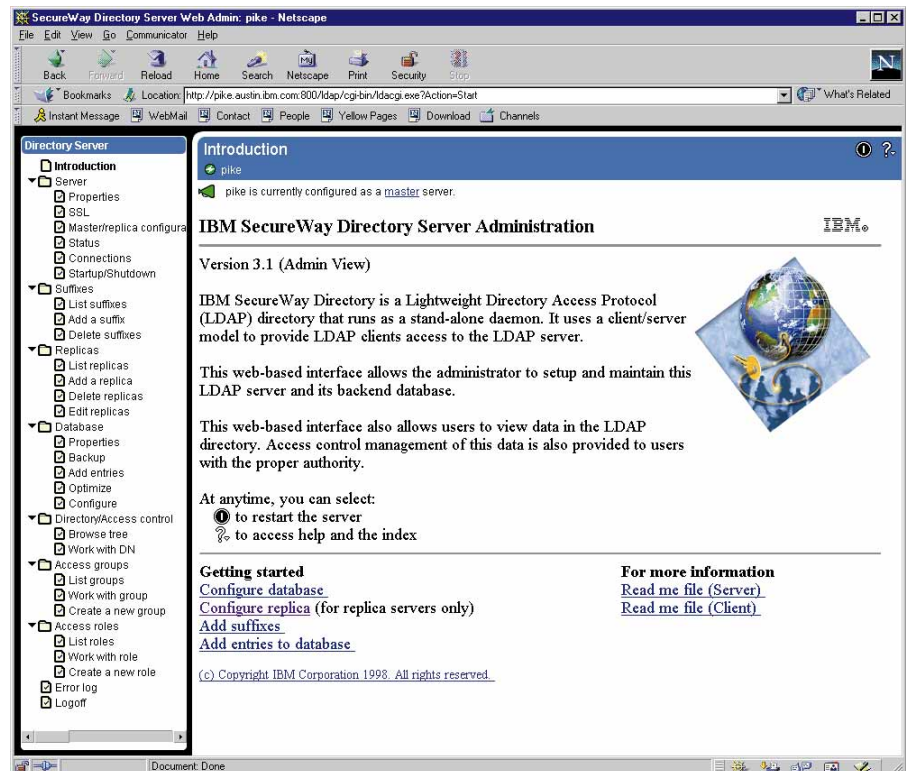
Delivers intelligent network support for dynamic data for configuration and security information

Meets Year 2000 readiness requirements¹

Meets euro currency readiness requirements²

IBM® SecureWay® Directory is a powerful enterprise directory for corporate intranets and the Internet. As a foundation for implementing integrated security solutions for e-business, SecureWay Directory lets information find you.

SecureWay Directory is an open, cross-platform server optimized to support directory-enabled applications that integrate your enterprise systems. Providing a unified architecture that allows you to share data with people,



IBM SecureWay Directory Web-based interface allows you to setup and manage your directory.



e-business

applications and network resources, SecureWay Directory helps improve communication, speed development and deployment of Web applications, and increase the security of your network.

For mission-critical enterprise requirements of uninterrupted access and maximum performance, SecureWay Directory provides services for reliability and scalability no single directory server can match. Utilizing the power of IBM DB2® Universal Database™ and its transactional data store, the directory extends the performance and availability of DB2® to an enterprise directory service.

SecureWay Directory offers:

- High performance and scalability. The SecureWay Directory can support millions of entries and thousands of LDAP clients.
- Secure Sockets Layer (SSL) support for the directory server and client. SSL provides encryption of data and authentication using X.509v3 public key certificates. The directory server runs with or without SSL support.
- Replication support across platforms allows additional copies of the directory to be available for directory operations, increasing performance and reliability of access.
- Redirection of directory operations to another SecureWay Directory or LDAP-compliant directory service provides integration of information and interoperability of directories.

Universal repository

By consolidating directory information, the SecureWay Directory offers significant benefits including:

- Consolidating administration of application-specific side files
- Providing a central repository for public key certificates
- Delivering scalability and performance for extranet, intranet and Internet applications

Start easy. Develop quickly.

The SecureWay Directory can be administered and configured from a Web browser-based GUI. The administrator can:

- Perform initial setup of the directory
- Change configuration options
- Manage the daily operations of the directory

User access control is provided for information stored in the directory and can be defined by an administrator. From a Web browser, users can search for or add to information in the directory.

Client access to the SecureWay Directory is supported using LDAP or HTTP protocols. LDAP client applications can be built for a wide range of platforms using the SecureWay Directory Client SDK.

SecureWay Directory Client SDK consists of:

- LDAP, Version 3, client for Java™ that supports Java Naming and Directory Interface (JNDI)
- LDAP-shared library
- C header files
- Sample programs
- Documentation for the LDAP application programming interfaces

You can develop LDAP client applications that provide secure access to an SecureWay Directory using SSL technology. Implementations of SSL, which employ RSA software, allow LDAP server access with data confidentiality.

Open internet standards

SecureWay Directory is an open standards-based solution. SecureWay Directory supports several industry-standards initiatives, such as Internet Engineering Task Force (IETF), Desktop Management Task Force (DMTF), Network Applications Consortium (NAC) and Directory Enabled Networks (DEN). The SecureWay Directory implements the following Request for Comments (RFCs):

RFC 1777 Lightweight Directory Access Protocol

RFC 1778 String Representation of Standard Attribute Syntaxes

RFC 1779 String Representation of Distinguished Names

RFC 1823 LDAP Application Program Interface

RFC 1960 String Representation of LDAP Search Filters

RFC 2052 A DNS RR for specifying the location of services (DNS SRV)

RFC 2219 Use of DNS Aliases for Network Services

RFC 2222 Simple Authentication and Security Layer (SASL)

RFC 2251 Lightweight Directory Access Protocol (V3)

RFC 2252 Lightweight Directory Access Protocol (V3): Attribute Syntax Definitions

RFC 2253 LDAP (V3): UTF-8 String Representation of Distinguished Names

RFC 2254 The String Representation of LDAP Search Filters

RFC 2255 The LDAP URL Format

RFC 2256 A Summary of the X.500(96) User Schema for use with LDAPv3

Platform support

Available on multiple platforms, SecureWay Directory helps you leverage your existing investment in hardware, software and networking infrastructure. Whatever your environment or application, IBM has the solutions to take you there. SecureWay Directory runs on the following platforms:

- AIX®, Version 4.2.1 or higher
- Security Server for OS/390®, Release 5 or higher
- OS/400®, Version 4 Release 3 or higher
- Microsoft® Windows NT® 4.0
- Sun Solaris 2.5.1 and 2.6

Software requirements

The following Web servers can use the Web-based administration of the SecureWay Directory:

- Apache 1.3.2 and 1.3.3
- IBM HTTP Server
- Domino Go Webserver™ 4.6.2
- Microsoft Internet Information Server 4.0
- Netscape Enterprise Server 3.5.1
- Netscape FastTrack Server 3.01

Service you can depend on

You can rely on the top-rated global service and support of IBM and our worldwide network of Business Partners, helping you maximize the return on your SecureWay Directory infrastructure investment.

Part of the total IBM integrated security solution

IBM SecureWay Directory is a component of IBM SecureWay FirstSecure, delivering comprehensive security solutions that enable e-business. IBM SecureWay Directory can be purchased as part of IBM operating systems, middleware applications, and security solutions, such as SecureWay FirstSecure.

For more information

For more information about SecureWay Directory, visit our Web site at:

www.ibm.com/software/network/directory



© International Business Machines Corporation 1999

IBM Corporation
Department VK4A
3039 Cornwallis Road
Research Triangle Park, NC 27709

Produced in the United States of America
3-99

All Rights Reserved

AIX, DB2, DB2 Universal Database, the e-business logo, IBM, OS/390, OS/400 and SecureWay are trademarks of International Business Machines Corporation in the United States, other countries or both.

Domino Go Webserver are trademarks of Lotus Development Corporation in the United States, other countries or both.

Microsoft and Windows NT are trademarks of Microsoft Corporation in the United States, other countries or both.

Java and all Java-based trademarks and logos are trademarks of Sun Microsystems, Inc. in the United States, other countries or both.

Other company, product and service names may be trademarks or service marks of others.

¹ Year 2000 ready means that the IBM product, when used in accordance with IBM-associated documentation, is capable of correctly processing, providing and/or receiving the date data within and between the twentieth and twenty-first centuries, provided that all products (for example, hardware, software and firmware) used with the IBM product properly exchange accurate date data with it.

² EuroReady means that the IBM product, when used in accordance with IBM-associated documentation, is capable of correctly processing monetary data in the euro denomination and of respecting the euro currency formatting conventions (including the euro sign), provided that all other products (for example, hardware, software and firmware) used with the IBM product are also EuroReady.



Printed in the United States on recycled paper containing 10% recovered post-consumer fiber.



G325-3813-01