

## IBM SecureWay Directory Version 3.2.2

---

### Highlights

---

- **Industry-leading cross-platform support on AIX<sup>®</sup>, zOS<sup>™</sup> (OS/390<sup>®</sup>), OS/400<sup>®</sup>, Solaris, Windows NT<sup>®</sup>, Windows<sup>®</sup> 2000, and Linux distributions for both Intel<sup>®</sup> and IBM @server zSeries (S/390<sup>®</sup>) platforms—Red Hat, Turbo, SuSe on Intel, and Turbo and SuSe on S/390 servers.**
- **Standards-compliant with Lightweight Directory Access Protocol (LDAP) Versions 2 and 3 operations.**
- **IBM industry-leading DB2<sup>®</sup> Universal Database<sup>™</sup> (UDB) technology, which provides proven reliability and scalability as the back-end data store.**
- **Robust replication support with both master/subordinate replication and true multiple-master replication.**
- **Widely supported by leading LDAP solution providers:**
  - **Metadirectory solution providers are Critical Path, Maxware, Metamerge, Novell, Radiant Logic, and Siemens.**
  - **Identity sanagement solution providers are Tivoli, Business Layers, Oblix, and OpenNetworks.**
  - **Security solution providers are Tivoli<sup>®</sup>, Netegrity and OpenNetworks.**
- **Tight integration with IBM operating systems, middleware, identity management and security products.**
- **Proven interoperability with other LDAP solutions. LDAP interpretability demonstrated successfully at The Open Group LDAP Plugfest 2001 with all participating products.**

LDAP directories are a core component of the next-generation e-business infrastructure and are being integrated with operating systems. Directories are evolving from limited application-specific and network operating system (NOS) administration roles to a core universal network service. They are taking on a greatly expanded role in enterprise computing and are becoming the central data repository of the network. The directory is the key integration point where identity, security, applications, systems and network management, and other network services all converge to store and retrieve data.

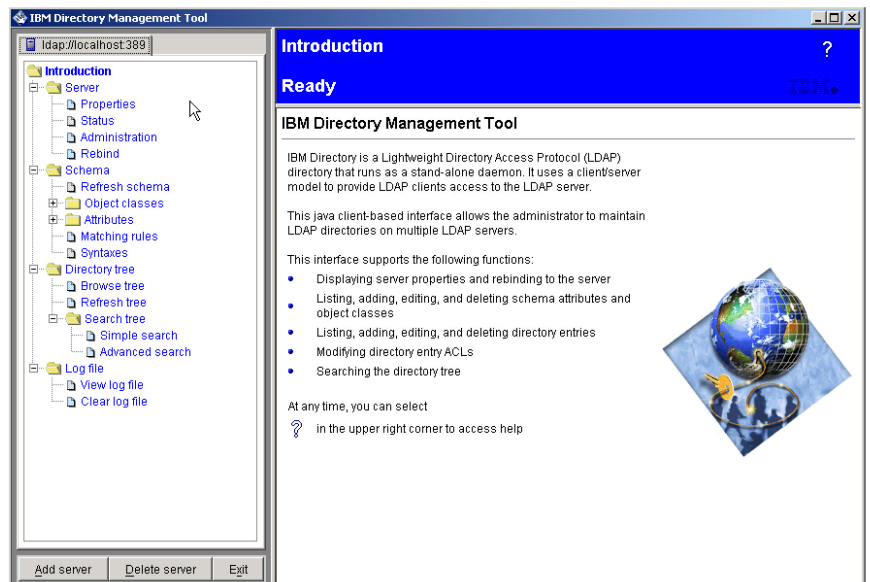
IBM SecureWay<sup>®</sup> Directory is designed and built to meet requirements that such a role demands. As the central store for data within the enterprise, it is a powerful enterprise directory for corporate intranets and the Internet. As a foundation for implementing integrated security solutions for e-business, IBM SecureWay Directory provides a secure, reliable and unified data repository. It is an open, cross-platform server optimized to support directory-enabled applications. A common goal within the enterprise today is to consolidate

and unify the management of identity. IBM SecureWay Directory is built to accommodate identity management with roles, fine-grain access control and entry ownership as the foundation of the server. Sharing data with people, applications, and network resources is a snap when using IBM SecureWay Directory. Improved communication and rapid development and deployment of Web applications are all the result of taking advantage of its capabilities. For mission-critical enterprise requirements where 24x7 availability is a must and maximum performance is required, the IBM SecureWay Directory is the right choice. It provides services for reliability and stability that meet the highest demands. Using the power of IBM DB2 Universal Database and its transactional data store, IBM SecureWay Directory extends the performance and availability of the DB2 database to a true enterprise or e-business LDAP directory service.

### IBM's Commitment to IBM SecureWay Directory

The role of a LDAP directory within the enterprise is evolving. It is becoming the central data repository of the network. IBM is committed to providing an industry-leading LDAP directory server for use within the enterprise and to ensuring that IBM SecureWay Directory will continue to deliver the performance, function and standards compliance needed to meet the ever-changing marketplace challenges. The key focus for the future is to continue to enhance the standards compliance, performance, manageability and scale of IBM SecureWay Directory.

[ibm.com/secureway/directory](http://ibm.com/secureway/directory)



*The IBM SecureWay Directory Web-based interface allows you to set up and manage your directory.*

Just like the proprietary NOS and application directories, IBM SecureWay Directory is a fundamental service that every enterprise requires. We provide IBM SecureWay Directory bundled with our operating systems, middleware, application development environments and applications at no extra charge. If it did not come bundled with a product, or you did not purchase an IBM product, you may download it from our Web site at [ibm.com/secureway/directory](http://ibm.com/secureway/directory) at no cost.

If you need support, you have the option to purchase it. Just follow the instructions on the Web site.

There is really no reason to delay, get a enterprise directory project started or back on track. Give the IBM SecureWay Directory a try. IBM also provides the services necessary to build a enterprise directory infrastructure. If the skills and expertise to take advantage of an LDAP enterprise directory are not available, IBM can help. To get more information on the directory services that IBM can offer, go to [ibm.com/secureway/directory](http://ibm.com/secureway/directory) and click **Services**.

IBM SecureWay Directory offers:

- **High performance and scalability**

*IBM SecureWay Directory can support millions of entries on a single server, while providing hundreds of clients with concurrent access to the server.*

- **Single and multiple master replication**

*IBM SecureWay Directory provides flexibility in the deployment of servers. A single master server with a virtually unlimited number of replica servers or multiple master servers with a virtually unlimited number of replica servers.*

- **Fine-grain access control**

*It is often necessary to allow access to a limited number of attributes within an entry. Fine-grain access control is used when this is required. A typical application is a user self-service applications. These applications allow users to update a specific number of attributes while the rest are read-only.*

- **Server management console**

*IBM SecureWay Directory includes a browser-based server management console. Remote management of the server is easy. All that is required is a client machine that has a browser.*

- **Data management console**

*IBM SecureWay Directory includes a data management console where data, schema and attributes can be added, deleted or modified.*

- **SSL data encryption**

*IBM SecureWay Directory includes the ability to encrypt data that is transmitted on the wire. By using Secure Sockets Layer (SSL) technology within IBM SecureWay Directory, data can be securely sent from a client to the LDAP server.*

Feature	Benefit
UDB-Backed Data Store	Proven performance, reliability, data integrity.
Write-through Cache	Updates are committed to the back-end data store and will not be lost if the server fails.
Fine-Grain Access Control	Controls access to data down to the individual attribute level, allowing self-service and delegated administration.
Entry Ownership	Allows not only access but entry ownership to be defined, ensuring a very robust delegated administration model.
Client SDKs	Both C and Java™ SDKs are provided, allowing fast LDAP application development.
Logging of Server Activity	Audit, Change and Error logs are provided to allow quick problem detection and prevention. The Change log can be used to allow connection to external data sources and avoid comparison of all data to find changes that occur.
Robust Replication	Single-master multiple replication and multiple-master replication are supported. Allows the server to be configured to prevent any server outage for either reads or writes. Allows configuration of servers to match the topography of the network to ensure data availability and to maximize server response time.
National Language Support (NLS)	Administrative consoles and documentation are available in many languages, such as Portuguese, Czech, Japanese, French and German, to name a few.
Extensive Default	The IBM default schema is one of the most complete in the industry. The schema includes not only person objects and attributes but the DEN schema for devices and support for Java object storage. Using the IBM schema avoids the time-consuming design of schemata, which will slow the deployment of the LDAP directory. The schema can be updated dynamically without causing a service interruption of a server restart. All schema updates are replicated.
Management Consoles	There are two management consoles. The first console is the Web browser-based directory administration console. This console can be run remotely and thus, lets you manage the operation of IBM SecureWay Directory. The other console provided is the Directory Management Tool (DMT). This console allows the remote administration of data within the server. You can quickly add new attributes, modify existing attributes, add object classes, view the directory tree, add entries, and so on. You can easily perform all the data-administration tasks from a remote client.
Plug-in Support	Additional server function can be added quickly by using the server plug-in framework.
Authentication	There are a number of authentication options for IBM SecureWay Directory. You can use simple user ID and password authentication. You can use the more-secure digital certificate-based authentication. IBM SecureWay Directory also includes an SASL plug-in interface, including CRAM MD5 and Kerberos authentication if required. The choice of authentication method is left to the user, who can choose a method that is supported or define an alternative using the SASL interface.



© Copyright IBM Corporation 2002

IBM Corporation  
Department VK4A  
3039 Cornwallis Road  
Research Triangle Park, NC 27709

Produced in the United States of America  
1/02

All Rights Reserved

References in this publication to IBM products or services do not imply that IBM intends to make them available in all countries in which IBM operates.

IBM, the IBM logo, AIX, DB2, DB2 Universal Database, the e-business logo, OS/390, OS/400, S/390, SecureWay, Tivoli, zOS and zSeries are trademarks or registered trademarks of International Business Machines Corporation or Tivoli Systems Inc. in the United States, other countries, or both.

Windows and Windows NT are trademarks of Microsoft Corporation in the United States, other countries, or both.

Java and all Java-based trademarks and logos are trademarks of Sun Microsystems, Inc. in the United States, other countries, or both.

Other company, product, and service names may be trademarks or service marks of others.