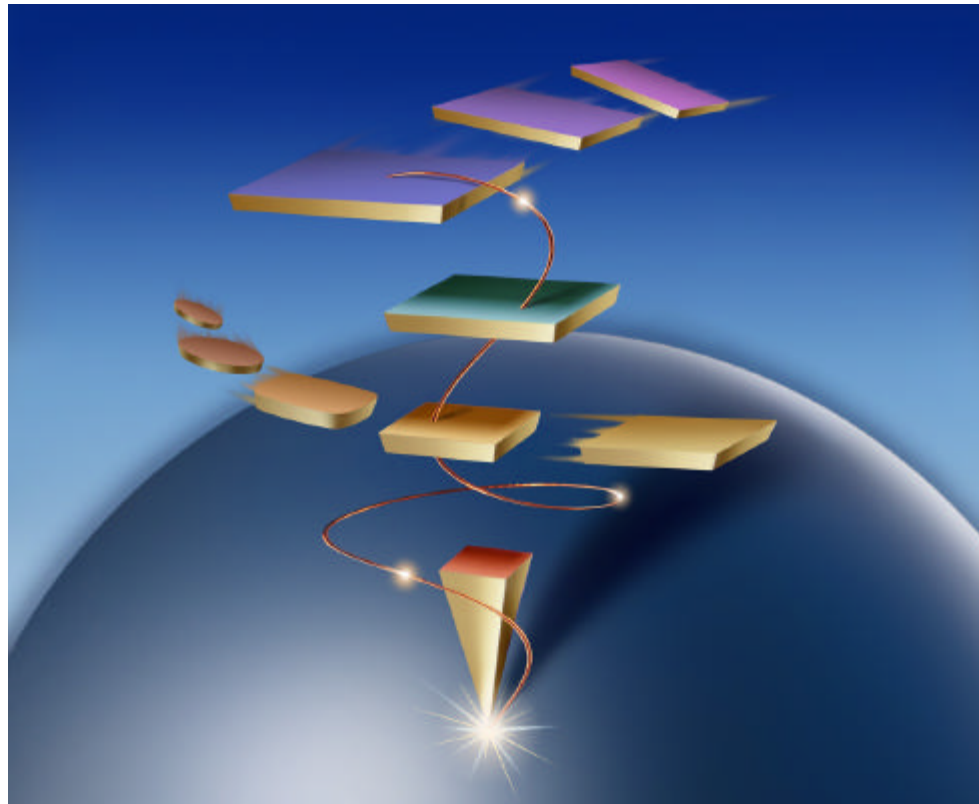




IBM Personal Communications



One easy answer for PC-host connections

Host Connectivity Needs



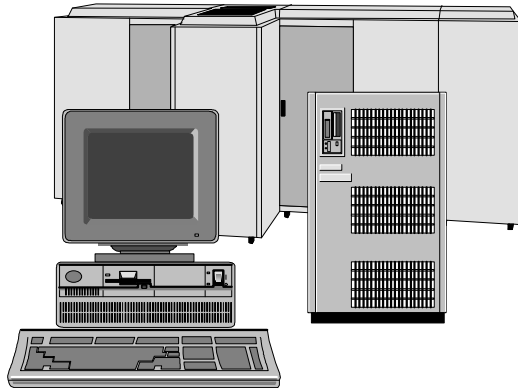
- The freedom to access data from anywhere using familiar interfaces and protocols
- A single package for SNA and TCP/IP connectivity and terminal emulation
- Support for multiple operating systems and dial-up, leased, LAN, and channel-attached configurations
- Simplified, consistent desktop communications for users, administrators, and application developers

Personal Communications Family Products Meet Customer Needs



- Single product for:
 - Multiprotocol application support
 - Office, home, and mobile use
 - DOS, Windows, Win 95, Win NT and OS/2
- Lower operational costs
 - Consistent, advanced graphical interface
 - Increased administrator productivity -- graphical tools
 - Connectivity options to match business needs
- Increased performance, availability, and flexibility
 - High Performance Routing (HPR)
 - Automatic rerouting
 - Data compression
- Auto-start browser for Internet access (OS/2 and Win NT)

Members of IBM Enterprise Communication Family



Servers

Communications Server for OS/390
Communications Server for AIX
SNA Client Access for AIX
SNA Applications Access for AIX
Communications Server for OS/2 Warp
Communications Server for Windows NT
NetWare for SAA
NetWare for SAA: AS/400 Edition

Clients

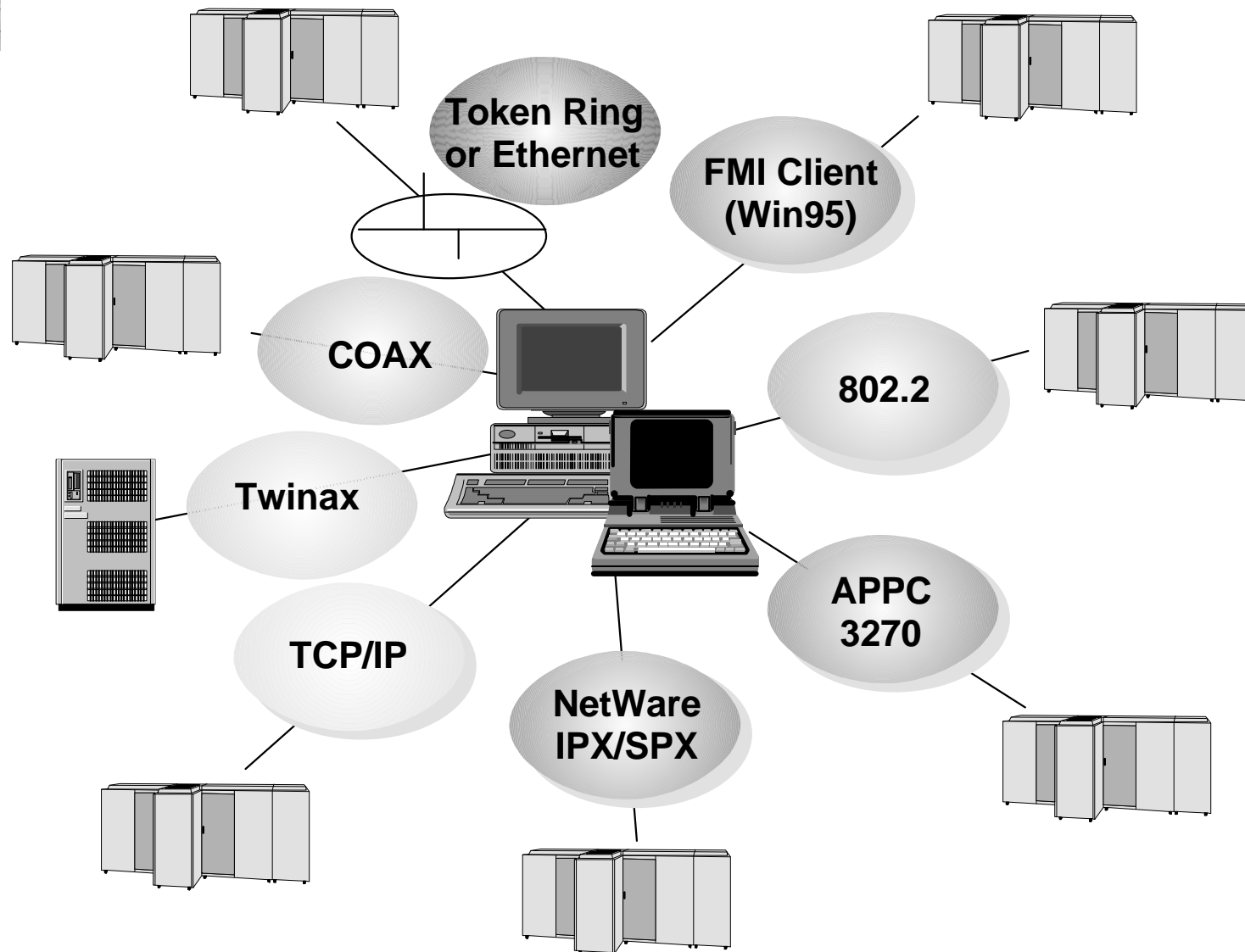
Personal Communications AS/400
for OS/2, Windows, Windows 95 and
Windows NT

Personal Communications AS/400 and
3270
for OS/2, Windows, Windows 95 and
Windows NT

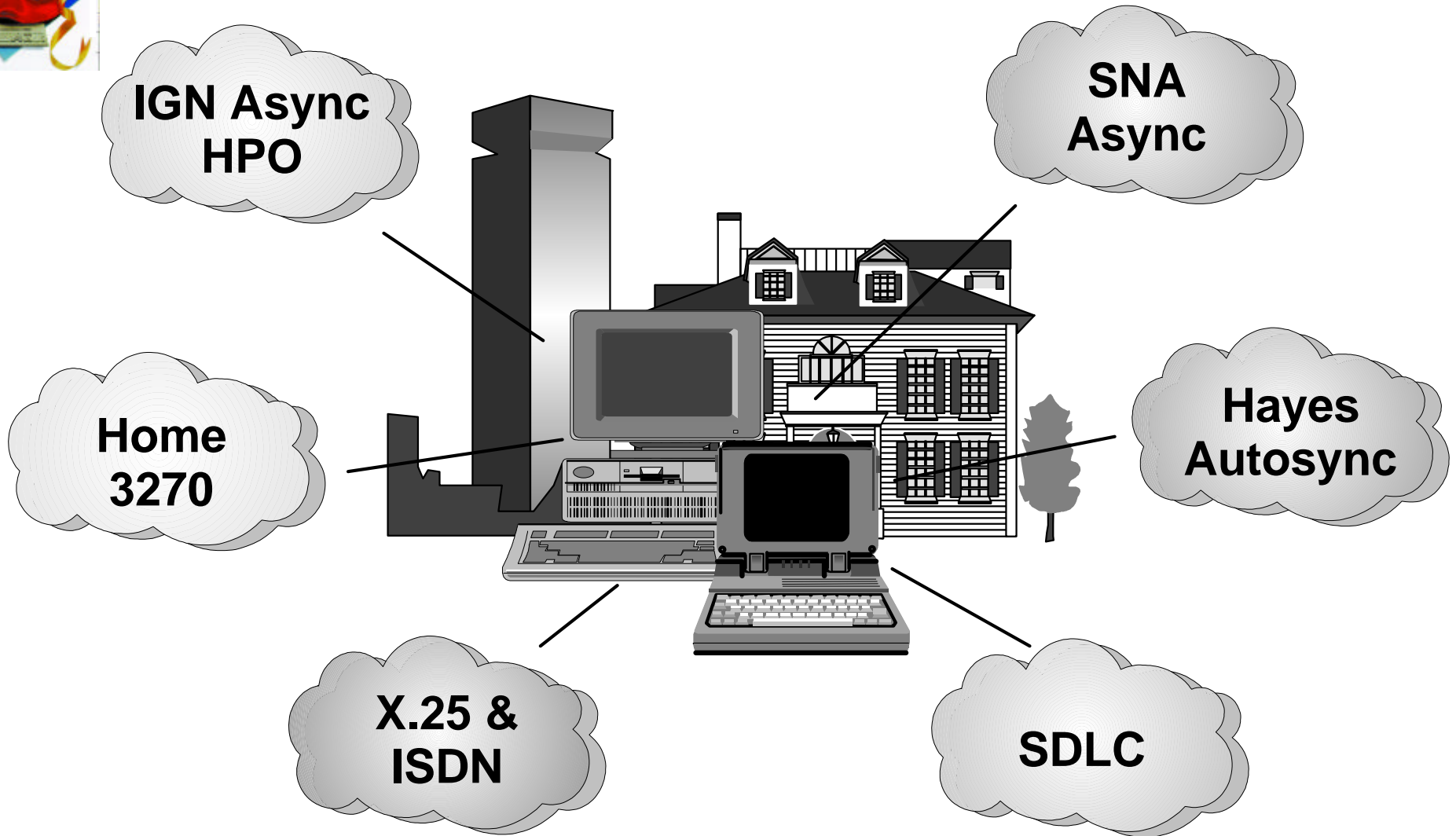
Host On-Demand

eNetwork Communications Suite
OS/2 Access Feature for OS/2
OS/2 Access Feature for Windows

One-stop Solution for Host Connections



Industry-leading Mobile and Home Connections



Wired and wireless connections to AS/400 and S/390 hosts

Communications Wizard



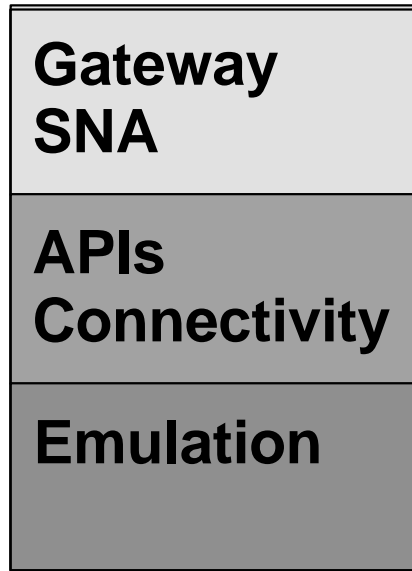
*Communications so advanced,
they seem like magic!*

- Multiprotocol support
- Auto-start browser for Internet access
- Industry-leading SNA support for best performance, availability, and flexibility
 - High-performance routing
 - Automatic rerouting around failures
 - Dependent LU Requestor for printer and display support over APPN
- Data compression to speed response and save line costs
- Security for transaction protection

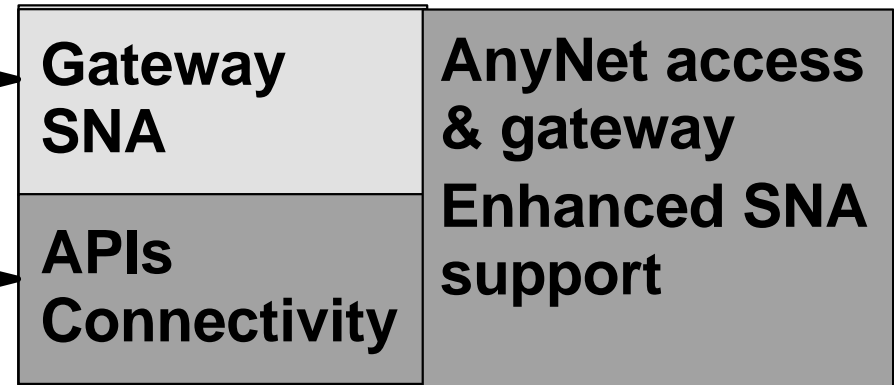


Restructured and Enhanced

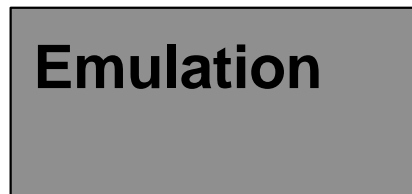
Communications Manager/2



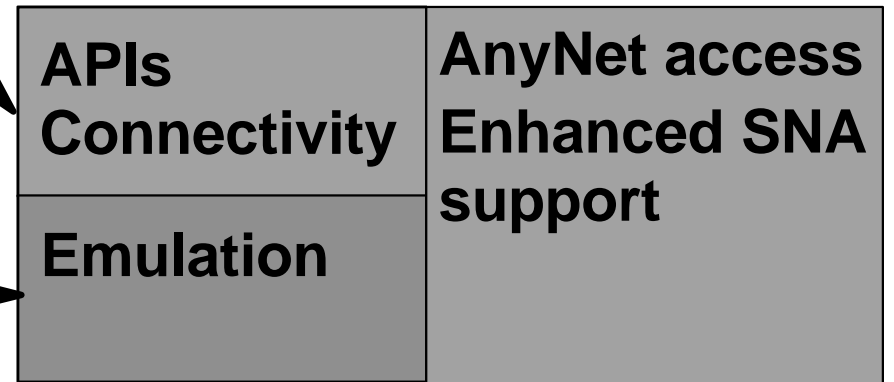
Communications Server/2



PC/3270 (DOS/Windows)

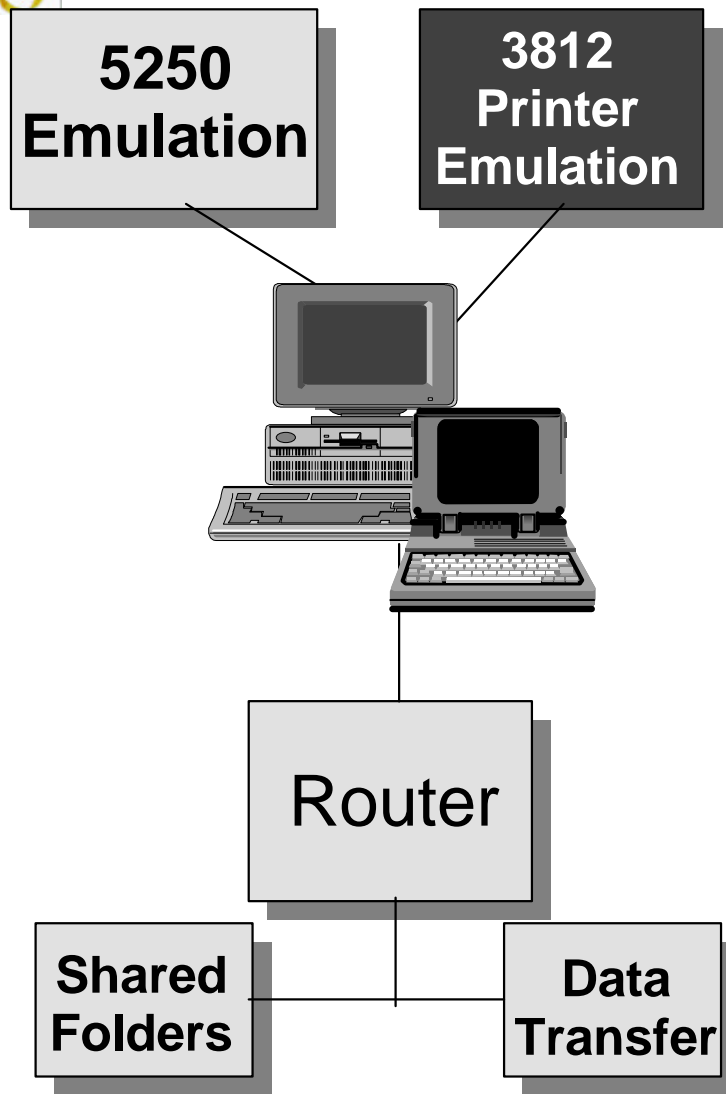


Personal Communications (DOS, Windows, OS/2, Win95, WinNT)





Closely Integrated With AS/400



- Shared folder support
 - (Windows and OS/2)
- PC Organizer and Text Assist
- Open Data Base Connectivity (ODBC) for streamlined data access (Windows)
- Enhanced file transfer
- Virtual print (Windows)
- S/36 connectivity
 - (Windows and OS/2)



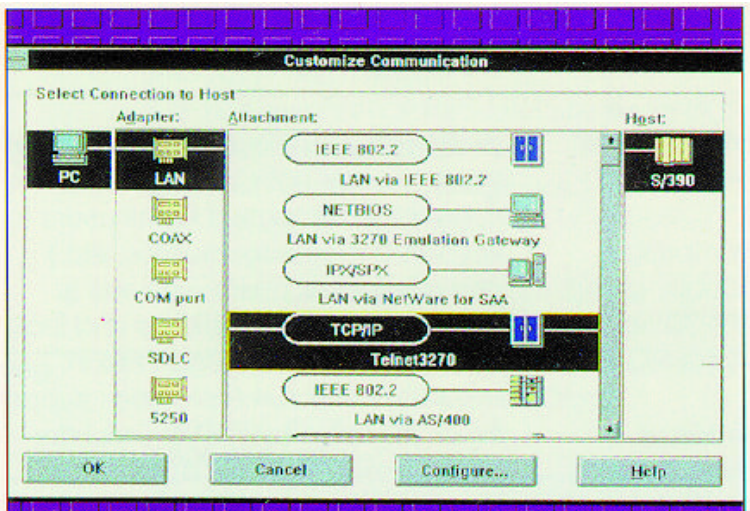
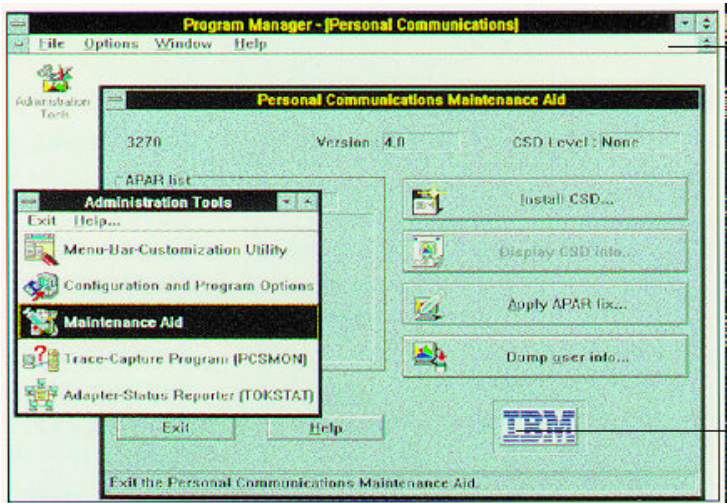
Improves User Productivity



- Users concentrate on applications, not communications
 - Natural, advanced graphical interface
- Easily automated repetitive tasks
 - Uses industry-leading CMMouse
- Drag-and-drop file transfers for speedy host-PC data exchange
- Intelligent data moves between applications (DDE)
- One-button host print to PC printers
- Record and playback
- Easy Rexx



Saves Administrators Time and Money



- Graphical configuration eases installation
- Installation from servers for rapid deployment
 - Global customization reduces support requirements
 - CID-enabled for OS/2
- Drag-and-drop customization speeds user setup
 - Color and keyboard mapping
 - Toolbar customization
 - Dynamic session definition
- Easy to manage and diagnose problems
- Everything on one CD-ROM

Easy to Customize and Develop Applications



Lotus

SmartSuite⁹⁶TM

Lotus

NOTESTM
desktop

Microsoft

OfficeTM

Personal

Communications

Family

- Personal Communications Toolkit for VisualBasic
- Native 32-bit applications for OS/2, Windows 95 and Windows NT
- All key interfaces supported for maximum development flexibility
 - LUA, APPC, CPI-C
 - RUI, EHLLAPI, SRPI
 - PCSAPI, DDE
- Stable APIs
 - Support continued for existing APIs
 - APIs compatible with install base
- Utilities to help automate functions
 - CMMouse, EasyREXX

Family of Products on a Single CDROM



Personal Communications AS/400

OS/2

Windows

Windows 95

Windows NT

Personal Communications AS/400 and 3270

OS/2

Windows

Windows 95

Windows NT



Comparative Features at a Glance

Productivity Enhancements for the End User

Feature	Win	Win 95	Win NT	OS/2
Customizable Tool Bar				
- Reposition ICONs	4	4	4	4
- Resize Tool Bar		4	4	4
- Assign own ICONs		4	4	4
- Execute any menu bar function	4	4	4	4
- Execute external programs		4	4	4
- Execute user-defined macros	4	4	4	4
Scrollable Tool Bar		4	4	4
Tool Bar balloon help	4	4	4	4
Language-oriented Keyboard Def'n Utility	4	4	4	4
Async performance enhancements	4	4	4	4
Async useability enhancements	4	4	4	4
Host graphics improvements				
- Rubber-band box				4
- Program symbol set	4			4



Comparative Features at a Glance

Connectivity Enhancements

Feature	Win	Win 95	Win NT	OS/2
Telnet RFC1647	4	4	4	4
HPO Client for IBM Global Network	4	4	4	4
APPC 3270 (DLUR)	4		4	4
Idle timeout option	4	4	4	4
ISDN support via IBM WaveRunner	4	4	4	4
Combined packages				
- CM/2 Workstation Access Feature				4
- Integrated Communication Stacks		4	4	
- NS Windows	4			
- AnyNet CPI-C over IP	4		4	4
- AnyNet Sockets over SNA	4			4



Comparative Features at a Glance

Productivity Enhancements for the System Administrator

Feature	Win	Win 95	Win NT	OS/2
Response Time Monitor	4			4
Automatic Trace Setup	4	4	4	4
Shipped with softcopy publications	4	4	4	4
Printer form feed options	4	4	4	4
EHLLAPI and PCSAPI	4	4	4	4
EHLLAPI/SRPI 32-bit APIs		4	4	4



Comparative Features at a Glance

Enhancements Unique to the AS/400

Feature	Win	Win 95	Win NT	OS/2
Virtual printer	4			
ODBC/DRDA support	4			
DataBase Access Tool	4			
Communication stack management	4	4	4	
OEM Twinax adapter support	4	4	4	
System/36 support	4			4
Column separator customization	4	4	4	4
Data transfer usability enhancements	4	4	4	4



Summary



- One easy answer to host communication needs
- New enhancements to award-winning products
- Versatile coverage for connectivity needs throughout the organization
- Money saving consistency, productivity aids, and reliability

Proven products--restructured and improved so they're even better!