



# IBM eNetwork Personal Communications for Windows 95, Windows 98 and Windows NT, Version 4.3

## Highlights

**Includes tools and new technology to help transform your business into an e-business**

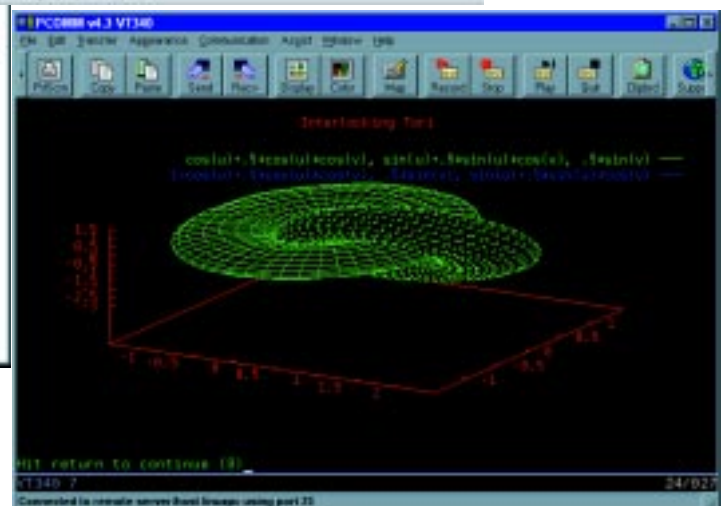
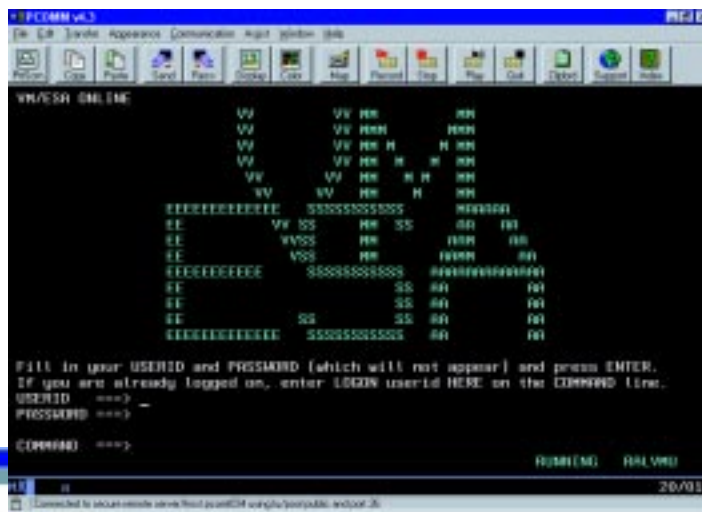
**Allows you to capitalize on existing investments and extend applications to Web-based technologies**

**Provides a single CD-ROM package for ordering and installing**

**Enables users to have access to mission-critical business systems regardless of platform or networking environment**

IBM® eNetwork™ Personal Communications for Windows 95, Windows 98 and Windows NT,® Version 4.3 (Personal Communications) is a host communication and terminal emulation package that features 3270, 5250 and VT emulation, SNA application support, integration and

SNA and TCP/IP connectivity. Personal Communications is a key component of the eNetwork Software Host Integration Solution that provides everything you need to enable secure access for virtually every user to your mission-critical business systems.



Multiple Personal Communications sessions illustrating SSL support, VT340 graphics and a custom application using Host Access Beans for Java.

## *Build on what you have.*

Personal Communications brings the power of personal networking to your workstation and exploits existing networking capabilities. This includes SNA applications and technologies, such as advanced program-to-program communication (APPC) and High-Performance Routing (HPR). It also provides TCP/IP support and an extensive API set offering HACL and EHLLAPI through various programming languages, such as C++, VBScript and Java™.

### **Key enhancements for Personal Communications, Version 4.3**

The key enhancements for Personal Communications are:

- Euro sign support
  - Secure Sockets Layer (SSL), Version 3
  - Host Access Beans for Java
  - ActiveX controls
  - Java interface for Host Access Class Library (HACL)
  - ODBC V3.0 support
  - Hot standby and load balancing support
- Tivoli®-enabled capability for installation and remote commands
  - VT340 graphics
  - Windows 98 support

### **Bridge to the future**

To bridge to the future, Personal Communications is Year 2000 ready.\* Products that are Year 2000 ready help assure your enterprise will operate as you move into the 21st century.

Personal Communications is EuroReady. It is capable of correctly processing the euro currency and displaying the euro sign. This assumes that all other products that are used with Personal Communications are also EuroReady.

### **Security when you most need it**

Personal Communications supports SSL, Version 3.0. When combined with the support for the load balancing Service Location Protocol (SLP), found in products such as Communications Server for Windows NT and NetWare for SAA®, Personal Communications can be configured to connect to only SSL-enabled servers ensuring more security when you need it most.

### **Enhanced development capabilities**

Personal Communications supports Host Access Beans for Java (Based on JavaBeans specification), ActiveX controls, VB automation objects and VBScript. Building on Personal Communications leadership in object-oriented programming, the HACL API has been enhanced to provide a Java programming interface.

With Java interface for HACL and Host Access Beans for Java, you have the ability to create applications for both Personal Communications and Host On-Demand, allowing the greatest amount of flexibility and preserving your investments for the future. And, Personal Communications has a set of ActiveX controls, delivering many of the features of Host Access Beans for Java for customers already familiar with these controls and the programming languages that use them.

### **Industry-standard APIs**

Personal Communications extensive API set has been further enhanced by improving EHLLAPI application performance and by the inclusion of industry-standard 32-bit EHLLAPI APIs, as well as the Windows® HLLAPI (WinHLLAPI) APIs.

### **Industry-leading emulation**

Personal Communications continues to set the standard for terminal access to business-critical applications and data on different host systems, taking advantage of 3270, 5250, TN3270E, TN5250, VT52, VT100, VT220 and VT340 emulation.

## Benefits

Personal Communications ensures that you are ready to make the transition to e-business with tools that you can use today and through new technologies that provide:

- *Network integration*  
Personal Communications can handle nearly any protocol, such as ISDN, HPR, SNA and IP, to help you connect a user to any data, anywhere.
- *Connectivity*  
Personal Communications enables your company to connect to your customers, suppliers, partners and employees.
- *Consistent look and feel*  
As your corporate information technology (IT) strategy evolves, don't spend valuable time and money retraining users whenever you change operating systems. Personal Communications looks the same, whether it's for OS/2®, Windows, Windows 95, Windows 98 or Windows NT
- *Easy licensing options*  
From multiple machines to a home installation license, Personal Communications makes it as easy to own as it is to use.
- *Open system architecture*  
From EHLLAPI to TCP/IP to SNA, Personal Communications provides industry-standard solutions to preserve your investments into the future.

- *Extensive language support*  
Personal Communications is multilingual, available in 21 languages, including double-byte character set (DBCS) languages. It supports the Euro sign, as well as extensive keyboard and code-page support.
- *A single Host Integration Solution*  
Team Personal Communications with other products in the eNetwork Host Integration Solution, including eNetwork Host On-Demand and eNetwork Communications Servers for OS/2, Windows NT and AIX® for the most complete answer to host access and network integration in the industry.

## Easy ordering – CD-ROM package options

To simplify ordering and installation, Personal Communications is packaged on a single CD-ROM for the 3270, 5250 and VT environments. A separate CD-ROM, Personal Communications AS/400®, is available for users who need only 5250 and VT support.

Both CD-ROM packages include online documentation and support for:

- Windows 95, Windows 98 and Windows NT with Personal Communications, Version 4.3
- OS/2 with Personal Communications, Version 4.2
- Windows 3.1 with Personal Communications, Version 4.1

## For more information

To learn more about eNetwork Personal Communications, visit our home page on the World Wide Web at [www.software.ibm.com/network/pcomm/](http://www.software.ibm.com/network/pcomm/).

To order a host integration evaluation kit, including Personal Communications, Version 4.3, visit the Host Integration Solution home page at [www.software.ibm.com/network/hostsolution/](http://www.software.ibm.com/network/hostsolution/).

For more information about cost-effective IBM network computing solutions, visit the IBM eNetwork Software home page at [www.software.ibm.com/network/](http://www.software.ibm.com/network/).

**IBM eNetwork Personal Communications features and functions**

	Windows 95, Windows 98, Windows NT, Version 4.3			OS/2 Version 4.2		Windows 3.1 Version 4.1	
	3270	5250	VT	3270	5250	3270	5250
<b>Attachments</b>							
• IEEE 802.2	x	x		x	x	x	x
• 3174 Peer Communication (LAN over coaxial)	x	x	x	x	x	x	x
• IPX/SPX	x			x		x	
• NWSAA Client and Communications Server for Windows NT Client							
APPC	x	x					
LUA	x						
• TCP/IP	x	x	x	x	x	x	x
• SNA Distributed Function Terminal (DFT)	x			x		x	
• Non-SNA DFT	x			x		x	
• Control Unit Terminal (CUT)				x		x	
• Twinaxial		x			x		x
• AS/400 and S/3x Console (asynchronous and twinaxial)		x			x		x
• SDLC (including auto-dial capability)	x	x		x	x	x	
• Wide Area Connector (WAC)	x	x		x	x		
• SNA over asynchronous	x	x		x	x	x	
• Asynchronous			x				
• Asynchronous for IBM Global Network™ (IGN)	x			x		x	
• Home3270	x			x		x	
• Hayes Autosync	x	x		x	x	x	x
• Hayes Autosync II (Windows 95 and 98 only)	x	x					
• Microsoft® SNA Server							
FMI	x					x	
WinAPPC	x	x				x	x
WinLUA	x					x	
• APPC3270 (LU2 over APPC)	x			x		x	
• AnyNet (SNA over TCP/IP)	x	x		x	x	x	x
• 3270 pass-through by AS/400	x			x		x	
• ISDN, X.25	x	x		x	x		
• PCI MPA	x	x		x	x		
• Enterprise Extender	x	x					
• 3270 pass-through over twinaxial	x			x			
• OEM adapter support	x	x	x	x	x		
<b>Print support</b>							
• Host print	x	x	x	x	x	x	x
3812 printer emulation		x			x		x
Host print transform		x			x		x
ASCII transparent	x	x	x	x	x	x	x
Printer definition table (PDT)	x	x		x	x	x	x
• Screen Print	x	x	x	x	x	x	x
• Virtual Print							x
• ZIPPRINT	x			x		x	

**IBM Personal Communications features and functions (continued)**

	Windows 95, Windows 98, Windows NT, Version 4.3			OS/2 Version 4.2		Windows 3.1 Version 4.1	
	3270	5250	VT	3270	5250	3270	5250
<b>Installation and customization</b>							
• Remote unattended installation (CID)				x	x		
• Silent installation	x	x	x				
• Microsoft SMS support	x	x	x				
• Installation and configuration from LAN server	x	x	x	x	x	x	x
• Automatic DFT connection	x			x		x	
• Simultaneous sessions with different code pages and keyboard languages	x	x	x	x	x	x	x
• Automatic logon		x			x		x
• 26 display and printer emulation sessions	x	x	x	x	x	x	x
• Selectable display sizes	x	x	x	x	x	x	x
• VT 52, 100, 220, 340			x				
• Toolbar customization	x	x	x	x	x	x	x
• Text configuration files	x	x	x	x	x	x	x
• Configuration update files	x	x					
• Initial configuration definitions	x	x					
• CM/2 migration	x	x		x	x		
• Tivoli support	x	x					
<b>Networking function</b>							
• SNA data compression (emulator sessions)	x			x		x	
• SNA data compression (LU 6.2 sessions)	x	x					
• AnyNet® Sockets over SNA	x	x		x	x		
• Session level encryption				x			
• VPD/EVPD, Alert	x			x		x	
• Response time monitor (RTM)	x			x		x	
• Command start/stop/query SNA node	x	x		x	x		
• Load balancing, hot standby, SLP for IPX	x	x					
• Secure Sockets Layer (SSL), Version 3.0	x	x	x				
• HPR routing over IP for nondisruptive backup	x	x					
• Automatic link reactivation	x	x					
• APPN® end node	x	x		x	x		
• APPN LEN node						x	x
• HPR	x	x		x	x		
• Dependent LU requester (DLUR)	x	x		x	x		
<b>Utilities</b>							
• 3174 port 0 utility				x		x	
• Administration tools	x	x	x	x	x	x	x
• Information bundler for problem determination	x	x	x	x	x		
• Internet service	x	x	x				
• Enhanced log/trace viewer	x	x	x				

**IBM Personal Communications features and functions (continued)**

	Windows 95, Windows 98, Windows NT, Version 4.3			OS/2 Version 4.2		Windows 3.1 Version 4.1		
	3270	5250	VT	3270	5250	3270	5250	
<b>User interface</b>								
• Graphical, customizable toolbar feature	x	x	x	x	x	x	x	
• Rule line	x	x	x	x	x	x	x	
• Menu bar customization	x	x	x	x	x	x	x	
• Pop-up keypad and hot keys	x	x	x	x	x	x	x	
• 3D hot spots	x	x	x	x	x	x	x	
• Macro record and play	x	x	x	x	x	x	x	
• Graphical keyboard remapping	x	x	x	x	x	x	x	
NLS key-caps support	x	x	x	x	x	x	x	
122-key keyboard support				x	x	x	x	
DBCS unique keyboard support	x	x						
• Customizable mouse	x	x	x	x	x	x	x	
• Drag-and-drop color remapping	x	x	x	x	x	x	x	
• Crisp fonts, automatic sizing, fixed font size	x	x	x	x	x	x	x	
• Display setup, view setup, window setup	x	x	x	x	x	x	x	
• Internet hot spots	x	x	x	x	x			
• OLE/ActiveX objects	x	x	x					
• APL support	x			x		x		
• Automation and scripting utility (CMMOUSE)	x	x	x	x	x	x	x	
• Accessibility for handicapped users	x	x	x	x	x	x	x	
• Status bar	x	x	x					
• Euro sign	x	x		x	x			
• Intelligent spreadsheet support	x	x	x	x	x	x	x	
<b>AS/400 application support</b>								
• PC C organizer and text assist	x			x		x		
• Enhanced non-programmable terminal user interface (ENPTUI)	x			x		x		
• AS/400 network drives (shared folders)	x			x		x		
<b>Programming Interfaces</b>								
• DOS EHLLAPI	x	x	x	x	x	x	x	
• EHLLAPI, DDE, PCSAPI, CPI-C, APPC	x	x	x	x	x	x	x	
• REXX EHLLAPI support	x	x	x	x	x			
• EasyREXX for HLLAPI				x	x			
• Visual Basic scripting	x	x	x					
• SRPI	x			x		x		
• REXX PSCAPI support	x	x	x	x	x			
• Host Access Class Library (HACL)	x	x	x					
• TCP62	x	x		x	x			
• Request Unit Interface (RUI)	x			x				
• Session Level Interface (SLI)	x			x				
• WinHLLAPI support	x	x	x					
• 32-bit HLLAPI	x	x	x					
• Convert macro to VBScript	x	x	x					
• Host Access Beans for Java	x	x	x					
• ActiveX controls	x	x	x					
• ODBC/DRDA 2.0 database access						x	x	
• ODBC 3.0 SNA for SNA	x	x						

---

**IBM Personal Communications features and functions (continued)**


---

	<b>Windows 95, Windows 98, Windows NT, Version 4.3</b>			<b>OS/2 Version 4.2</b>		<b>Windows 3.1 Version 4.1</b>	
	3270	5250	VT	3270	5250	3270	5250
<b>File transfer</b>							
• File transfer through emulator session	x	x	x	x	x	x	x
• Lists	x	x	x	x	x	x	x
• Templates	x	x	x	x	x	x	x
• Import/Export	x			x		x	
• Data transfer by SNA (SQL file transfer)		x			x		x
• ASCII – host file transfer							
XModem			x				
XModem1K			x				
YModem			x				
YModemG			x				
<b>Host graphics</b>							
• GDDM and GOCA	x			x		x	
• Programmed symbol set	x			x		x	
• Vector	x			x		x	
• Copy graphics images	x			x		x	
• VT340 ReGIS and Sixel support			x				

---



---

**Personal Communications Version 4.3 at a glance**


---

**Hardware requirements**

- Minimum of 16MB RAM, with 24MB recommended as minimum for Windows 95 and Windows 98 and 32MB for Windows NT
  - 486 or higher system processor
  - 40MB of fixed disk space is minimum – additional space may be required depending on installation options
- 

**Software requirements**

Supported by the following desktop platforms:

- Windows 95 (Personal Communications, Version 4.3)
- Windows 98 (Personal Communications, Version 4.3)
- Windows NT 4.0 (Personal Communications, Version 4.3)
- OS/2 (Personal Communications, Version 4.2)
- Windows (Personal Communications, Version 4.1)

Communications with the following types of server or gateway:

- eNetwork Communications Server for OS/2 Warp
  - eNetwork Communications Server for Windows NT
  - eNetwork Communications Server for AIX
  - eNetwork Novell NetWare for SAA, Version 2.0, or later
  - Microsoft SNA Server
  - Direct connection to the host
-



© International Business Machines Corporation 1999

IBM Corporation  
Department VK4A  
3039 Cornwallis Road  
Research Triangle Park, NC 27709

Produced in the United States of America  
01-99  
All Rights Reserved

AIX, AnyNet, AS/400, eNetwork, IBM, IBM Global Network, OS/2, SAA and SecureWay and are trademarks of International Business Machines Corporation in the United States and/or other countries.

Tivoli is a trademark of Tivoli Systems, Inc. in the United States and/or other countries.

Microsoft, Windows, Windows NT, BackOffice and the BackOffice logo are trademarks of Microsoft Corporation in the United States and/or other countries.

Java and all Java-based trademarks and logos are trademarks of Sun Microsystems, Inc. in the United States and/or other countries.

Other company, product and service names may be trademarks or service marks of others.

\* Year 2000 ready means that the IBM product, when used in accordance with IBM-associated documentation, is capable of correctly processing, providing and/or receiving the date data within and between the twentieth and twenty-first centuries, provided that all products (for example, hardware, software and firmware) used with the IBM product properly exchange accurate date data with it.



Printed in the United States on recycled paper containing 10% recovered post-consumer fiber.

---

Designed for  
  
Microsoft®  
BackOffice®



G325-3475-04