

Lotus® software

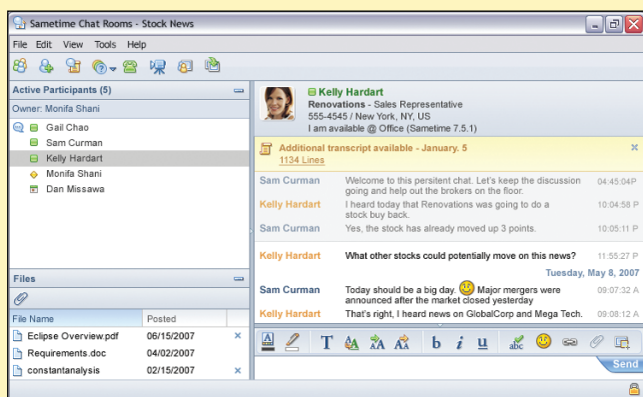
## Unify and simplify your business communications with IBM Lotus Sametime software solutions.

Now you can quickly and easily adopt a unified communications and collaboration strategy for your business. The IBM Lotus® Sametime® software family delivers enterprise instant messaging (IM) and Web conferencing, point-to-point video, Internet telephony and much more. Connect with your coworkers, customers and business partners in realtime—anywhere, anytime.

### Reduce the cost and complexity of your business communications

Allow anyone in your organization to access voice, data and video communications via a single interface—to help save your organization time and money:

- Enterprise instant messaging—communicate quickly and inexpensively with robust security features
- Point-to-point video and Web conferencing—meet, collaborate and make decisions with people, without traveling
- Multiway Voice over Internet Protocol (VoIP)—simplify telephone calls and potentially reduce your hardware and communications expenses



### Allow people to work the way they want, wherever they are

Extensive support for multiple software and devices helps you communicate and collaborate your way:

- Integration with Microsoft® Office software, IBM Lotus Notes® software and/or other IBM Lotus software
- Federation with supported public IM networks
- Support for multiple platforms and operating systems, including Microsoft Windows®, Linux®, Apple Macintosh desktops and many mobile devices
- Advanced security features help keep your communications confidential and protected



### Build the communications and collaboration strategy that best meets your needs

Lotus Sametime software supports all businesses, whether large or small, whether they have simple communications needs or a complex infrastructure:

- Scalable design that can grow with you
- Open architecture with an open programming model accessible to anyone
- Support for third-party telephony, audio and video services
- Investment protection for your existing systems and applications

## Many Lotus Sametime options, one unified communications and collaboration solution

Whatever enterprise communications solution your business needs, the Lotus Sametime software family can help you connect better, from wherever you are:

- **IBM Lotus Sametime Entry 8 software**—a cost-effective way to get started with enterprise instant messaging and presence awareness for Microsoft Office users.
- **IBM Lotus Sametime Standard 8 software**—easy to use and manage, and builds upon capabilities in the IBM Lotus Sametime 7.5.1 software release. The solution provides a unified user experience for included services such as presence, instant messaging, Web conferencing, VoIP and video, as well as an open plug-in model for adding third-party services such as telephony, audio/video conferencing, unified messaging and business applications.
- **IBM Lotus Sametime Advanced 8 software**—currently planned to add advanced communications and collaboration features such as persistent chat, broadcast tools, instant screen sharing and location-based awareness; planned availability early 2008.
- **IBM Lotus Sametime “Unified Telephony” software**—currently planned to add the ability to access and manage telephone communications through the Lotus Sametime or IBM Lotus Notes client; includes phone presence awareness and incoming call management, and works with multiple, mixed telephone systems; planned availability mid 2008.
- **IBM Lotus Sametime Unyte™ services**—easy-to-use, affordable Web conferencing services for any size business. With Lotus Sametime Unyte, IBM offers the flexibility to use a Web conferencing service anytime, anywhere.

### Put your trust in a marketplace-leading solution

The Lotus Sametime software product family delivers the features and capabilities your organization needs to support successful unified communications and collaboration in the workplace. Employees, customers and suppliers can take advantage of a flexible, managed environment with security features that your business requires. Plus, with Lotus Sametime software, you get creative, innovative communications and collaboration capabilities that enable your employees, customers and partners to reach out to collaborate with each other anywhere, anytime, to achieve their business objectives.

### For more information

To learn more about IBM Lotus Sametime software, please visit:

[ibm.com/lotus/sametime](http://ibm.com/lotus/sametime)

To view the online catalog for IBM Lotus Sametime software, please visit:

[ibm.com/lotus/solutionscatalog-sametime](http://ibm.com/lotus/solutionscatalog-sametime)



© Copyright IBM Corporation 2007

Lotus Software  
IBM Software Group  
One Rogers Street  
Cambridge, MA 02142  
U.S.A.

Produced in the United States of America  
11-07  
All Rights Reserved

IBM, the IBM logo, Lotus, Lotus Notes, Notes and Sametime are trademarks of International Business Machines Corporation in the United States, other countries or both.

Unyte is a trademark of WebDialogs, Inc., in the United States, other countries or both.

Microsoft and Windows are trademarks of Microsoft Corporation in the United States, other countries or both.

Linux is a registered trademark of Linus Torvalds in the United States, other countries or both.

Other company, product and service names may be trademarks or service marks of others.

All references to Renovations refer to a fictitious company and are used for illustrative purposes only.

The information contained in this documentation is provided for informational purposes only. While efforts were made to verify the completeness and accuracy of the information contained in this documentation, it is provided “as is” without warranty of any kind, express or implied. In addition, this information is based on IBM’s current product plans and strategy, which are subject to change by IBM without notice. IBM shall not be responsible for any damages arising out of the use of, or otherwise related to, this documentation or any other documentation. Nothing contained in this documentation is intended to, nor shall have the effect of, creating any warranties or representations from IBM (or its suppliers or licensors), or altering the terms and conditions of the applicable license agreement governing the use of IBM software.

References in this publication to IBM products, programs, or services do not imply that they will be available in all countries in which IBM operates. Product release dates and/or capabilities referenced in this publication may change at any time at IBM’s sole discretion based on market opportunities or other factors, and are not intended to be a commitment to future product or feature availability in any way.