

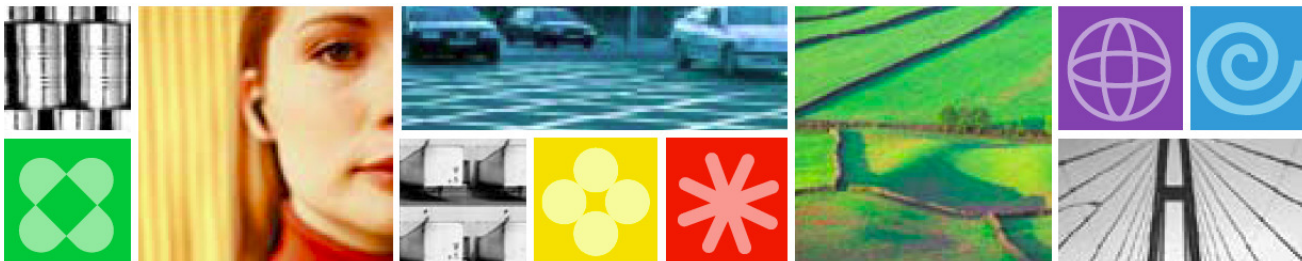


# System z Academic Initiative

Columbus State University  
TSYS

[ibm.com/university/systemz](http://ibm.com/university/systemz)

Don Resnik (resnik@us.ibm.com)





# The IBM Academic Initiative – building mainframe skills

## Five years of .....

### INVESTMENT

IBM **invested** five years ago to develop more mainframe skills for our clients – *System z Academic Initiative*.



1.

### OUTREACH

The mainframe community (ambassadors) **communicated** the program to educators worldwide – roundtables, meetings, calls, etc.



2.

### GROWTH

The program and school enrollment **grew** as the community evangelized with educators the need for enterprise skills.



3.

### CONNECTIONS

**Connections** are happening between educators teaching the mainframe and clients running mainframes.



4.

### EXAMPLES

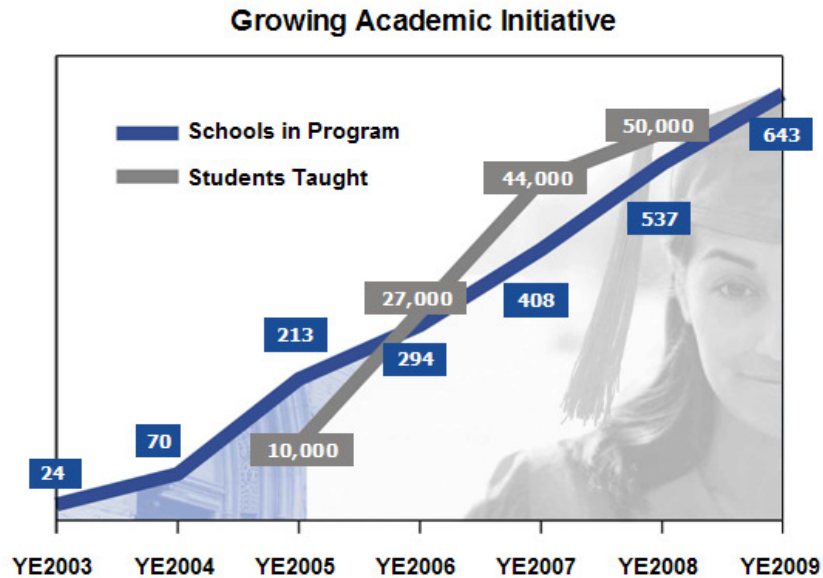
**Examples** are happening every day with students getting jobs and clients building their next generation of mainframe skills.



5.



## Member schools world wide in System z Academic Initiative



- **643 Participating Schools** – >50,000 students attended mainframe education, reaching students in 61 countries
- **Participation continues to increase - +20% in 2009**
  - 45% North America
  - 24% Europe, Middle East, and Africa
  - 16% Latin America
  - 15% Asia/Pacific
- **Wide variety of schools in the program** - *Different level of participation*
- **All programs are unique** - Designed to provide flexibility to the school to meet their requirements and capabilities



# System z Academic Initiative Program



**Access to  
mainframes  
worldwide  
for teaching  
(no fee)**



**44 Courses and z/OS Mastery Exams**  
*to validate z knowledge*



**z Skills Help Desk**  
*to assist the community - [Zskills@us.ibm.com](mailto:Zskills@us.ibm.com)*

2009 - 4,688 inquiries  
2,658 Course downloads  
1,619 contest questions  
411 general questions - +59%



**Student Mainframe Contests**  
*to generate interest*

Five years, 15 countries and spreading WW



**Professor education, relationships**  
**Roundtables on Campus**  
*to get industry input - 45*  
*Expanding worldwide*



## Syracuse University Student Writes to his Professor

**From:** mbbutler@syr.edu [mbbutler@syr.edu]  
**Sent:** Thursday, February 18, 2010 11:21 PM  
**To:** David Dischiave

**Subject:** Thank you!!

*Professor Dischiave,*

*I don't even know where to start. You have prepared me far beyond any other candidate for the internship and even the full-time job equivalent! No one at my table at the reception knew anything about mainframe technologies. I threw around the word Z/OS a few times and understood when a manager was talking about LPARs (I know he was expecting us to be clueless and get a reaction). Each manager that works with mainframe technology that came to my table made it clear that they need more young mainframe people! Exactly what you have told us came out of their mouths! The technology is so important and the people who know it are retiring soon! Honestly, I am so excited to go to the interviews all day tomorrow so I can push for the mainframe part of the job again! We get to request our top three choices of areas of IT to work in (Distributed Systems Administration, Computer Support, Network and Telecom, Data Center, or Mainframe)- my number ONE will be mainframe (of course, Data Center is up there as well)! Because of you, I'm more marketable than the rest and I stand out as a prepared, knowledgeable, and motivated student!*

*Thank you!!!!!!!!!!!!*

Best regards,  
Matt



## Opportunities to develop mainframe skills

- List of schools teaching the mainframe [ibm.com/university/systemz](http://ibm.com/university/systemz)

---

- Enterprise Computing Community [ecc.marist.edu/](http://ecc.marist.edu/)

---

- z/OS® Certificate Program [idcp.org/learnzos](http://idcp.org/learnzos)

---

- Community Resources [ibm.com/systems/z/advantages/newtosystemz/](http://ibm.com/systems/z/advantages/newtosystemz/)

---

- z Skills Help Desk [zskills@us.ibm.com](mailto:zskills@us.ibm.com)






## Growing number of connections between industry and Academic Initiative schools teaching mainframe

### *(Examples of hiring mainframe skills or partnerships)*

Columbus State GA	➔	TSYS
University of Arkansas	➔	Wal-mart, Tyson Foods, Dillards, JP Hunt, DataTronics, Baldor, Conoco Phillips
Illinois State University	➔	John Deere, Caterpillar, Country Financial, Citigroup, Schwab, Anheuser-Busch
North Carolina Central University	➔	Bank of America, MetLife, SAS, Chubb
Anna University India	➔	Infosys, Satyam, Tata, and IBM
Marist College	➔	Aetna, Citigroup, Progressive, Travelers
Ryerson University	➔	RBC
Syracuse University	➔	JPMC
University of South Carolina	➔	BlueCross BlueShield
Arizona State University	➔	Schwab
Columbus State CC	➔	Nationwide
Cleveland State CC	➔	Antares





# Backup Slides





## Companies joined IBM on campus to start or extend mainframe education

**Customers and Partners:** 3M, AAA, ACS, ADP, Aetna, AEP, Aflac, Alexan, Alticor, America First Credit Union (AFCU), American Express, American Greeting, Amerisure Insurance, Antares Management Solutions, Assurant Health, ASU, Auto Owners Insurance, Avnet, Bank of America, Beth Israel Deaconess Medical Center, Blue Cross Blue Shield of Alabama, Blue Cross Blue Shield of Michigan, Blue Cross Blue Shield of MN, Blue Cross Blue Shield of Montana, Blue Cross Blue Shield of NC, BMC Software, Boston University, Brown Bros Harriman, Case Western Reserve University, CA, Centers for Medicare and Medicaid Services (CMS), Charles Schwab, Citigroup, City of Cleveland - Cleveland Airport Systems, City of Houston, CIGNA, Coca Cola Enterprises, Colonial Bank, Commonwealth of Massachusetts EMC, Compass Bank, County of El Dorado, DaimlerChrysler, Department of Technology Services, DHI Computing, DHL, Drummond Company, Exxon Mobil, Federal Reserve, Fidelity Investments, First Merrit Bank, Ford Motor Company, Forrester, Franchise Tax Board, Freescale Semiconductor, Genuine Parts Company, Genworth Financial, Georgia Dept of Labor, Georgia Pacific, Global Crossing, GuideOne Insurance Company, Hannaford, Health Net Inc., Internal Revenue Service (IRS), ISO, Jack Henry, JP Morgan Chase Credit Card Services, JPMorganChase, LL Bean, Lowe's, Mainline Information Systems, Marriott, Mayer Electric Supply Company, Mayo Clinic, Medco, Meijer, Merrill Lynch, Methodist Hospital, MetLife, Motion Industries, MSI, National City Corporation, Nationwide, Principle Financial Group, Progress Energy, Progressive Insurance, Regions Financial Corporation, Safeway, Salt Lake County, Salt River Project, Schwab, Sears, Sine Nomine Associates, Sirius Computer Solution, Social Security Administration (SSA), Software AG, Software Assurance Working Group, Southern Company, State Auto, State Employees' Credit Union, State of CA, State of GA Dept of Driver Services, State of Minnesota, State of Montana, State of NC - ITS, State of Utah, State Street, SunTrust, Technology Resources Company, Temple-Inland, Texas Instruments, Texas State University, The Hartford, TMSA, Travelers Insurance Company, Trinity Information Services, United Health Group, University of Michigan Hospitals, UPS, US Bank, Verizon, Verizon Data Services, Vicom Infinity, VSP, Wachovia, Wellington-Royce Corporation, Wells Fargo, Westfield Group, Workers Compensation Fund, Zions Bankcorp



# Businesses with mainframes should join

**MARIST**  
WELCOMES YOU TO

**ENTERPRISE  
COMPUTING COMMUNITY  
NATIONAL CONFERENCE**  
JUNE 21 - 23, 2009

**A COMMUNITY TO REVITALIZE  
THE UNDERGRADUATE  
CURRICULUM IN  
ENTERPRISE COMPUTING**

National Science Foundation  
WHERE DISCOVERIES BEGIN

**PLATINUM SPONSORS**

**GOLD SPONSORS**

- Technology Lectures**
- AIX on Power
  - Business Analytics
  - Converged Networking
  - Dynamic Infrastructure
  - Green Data Centers
  - Managing Enterprise Systems
  - Software Development

**Student Interviews**

<p>Debra Baxter, Illinois State University</p>	<p>Sarah Dykema, University of Arkansas</p>
<p>Ben Ferenchack, Widener University</p>	<p>Sean Goldsmith, Marist College</p>
<p>Regina Robbins, North Carolina Central University</p>	<p>Scott Wetter, Marist College</p>



## How educators get started

- Educators join the initiative at: [ibm.com/university/systemz](http://ibm.com/university/systemz)



643  
Schools

Download Course Materials



44 courses

Request access to mainframes



Hubs that provide  
remote access  
world wide

Attend faculty education



Professor seminars,  
education coupons



## IBM System z courses

### Mainframe courses available:

#### Foundational principles

- Intro to the Mainframe: z/OS Basics\*
- Intro to the Mainframe: Networking\*
- Intro to the Mainframe: Security\*
- Intro to the Mainframe: Large Scale Commercial Computing

#### Operating systems

- Linux on System z
- Introduction to z/VM®
- Introduction to z/VSE Basics
- UNIX® System Services (Module)

#### User interfaces

- ISPF: z/OS Basic Interfaces

#### Storage management

- VSAM

#### Programming languages

- Assembler
- COBOL
- JCL

#### Other

- z/OS Advanced Topics\*
- [z/OS Emerging Technologies\\*](#)
- [z/OS Installation](#)

#### Tivoli security, systems, network, and storage management courses

- IBM Tivoli License Compliance Manager for z/OS 4.2 Implementation
- IBM Tivoli System Automation for z/OS 3.1 Introduction and Operations
- IBM Tivoli System Automation for z/OS 3.1 Implementation and Administration
- IBM Tivoli Workload Scheduler 8.2 for zOS Scheduler's Workshop

#### Information, data and transaction management

- Enterprise Server Data Management
- DB2 for z/OS Fundamentals
- DB2 Family Fundamentals (Cross product)
- DB2 SQL Workshop (Cross product)
- DB2 for z/OS Database Admin Workshop, Part 1
- DB2 for z/OS Database Admin Workshop, Part 2
- DB2 Programming Workshop for z/OS
- [DB2 for z/OS Application Development](#)
- [DB2 for z/OS Query Optimization and Performance Tuning](#)
- [Intro to IMS\\*](#)
- An Introduction to IMS (Textbook reference)
- Transaction Management

#### Application development

- WebSphere Application Server for z/OS
- Intro to IBM WebSphere Developer for z (Web based)
- WebSphere MQ for z/OS System Administration
- [Developing COBOL with IBM Rational Developer for System z](#)

#### Diagnosis

- z/OS RAS and Diagnostics\*

#### eLearning resources:

- Interactive e-Learning Module: *z/OS Basics*
- [Flash Demo: Introduction to Rational Developer for System z](#)
- [Develop a batch DB2 for z/OS COBOL application using RDz](#)
- [Developing and debugging a COBOL DB2 application](#)
- [Editing record-oriented programs with the System z LPEX editor](#)
- Learn about your future in Large Systems*
- Careers in Mainframes*

\*available in audio version



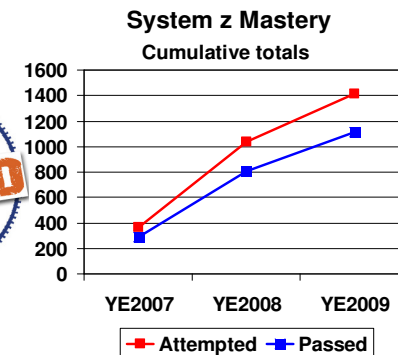
## Measuring and Validating Mainframe Knowledge

IBM System z entry level for z/OS System Programmer Mastery

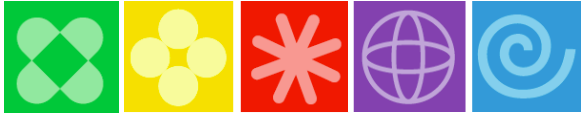
- *Introduction to the Mainframe: z/OS Basics*
- Worldwide proctored exam (Thomson Prometric)
- Results recorded in IBM certification database
  - **Student Opportunity System qualification criteria**
- Industry feedback: Valuable measurement of 'Entry Level Criteria'
- 1,409 Attempts (78.9% success rate)  
36% increase in 2009  
10 new countries participated in 2009  
28 countries in total
- 2010 WW **no cost** academic offering announcement in March



THOMSON  
PROMETRIC



[ibm.com/certify/mastery\\_tests/ovrZ01.shtml](http://ibm.com/certify/mastery_tests/ovrZ01.shtml)



## Global - Master the Mainframe Contests

- **Five years, 15 countries and spreading worldwide**
  - No experience necessary
  - Three levels of challenges

**Prizes: T- shirts, iPods, Laptops, XBox360, Wii, Sony PSP, Nintendo DS, HDTVs, trips**
- **2009 U.S./Canada contest**
  - 3,000 students from 425 schools
  - 300% increase in registration since 2005
- **WW Contests in 2009**
  - Australia
  - Russia (new)
  - US and Canada
  - United Kingdom
  - Taiwan (new)
  - Brazil
- **2010 targets:**

US/Canada, UK, Brazil, Australia, Taiwan, Russia, France (new), Netherlands (new), Mexico (new), India (new), Germany (new)



Location	Contests	Students	Schools
Brazil	2007 2008 2009	2011 3287 2008	390 400 390
BeNeLux	2007	76	9
Nordics	2007	147	11
Thailand	2007	960	40
UK	2006 2007 2008 2009	725 676 876 1132	40 59 64 70
North America	2005 2006 2007 2008 2009	750 1085 1750 1879 3004	85 177 325 325 425
Australia	2008 2009	450 315	31 29
Taiwan	2009	560	44
Russia	2009	269	41
<b>Totals</b>	<b>15</b>	<b>21,960</b>	<b>2,955</b>

[ibm.com/university/contest](http://ibm.com/university/contest)



## System z hubs provide remote access for teaching the mainframe

- **Marist College NY** – z/OS hub
- **University of Arkansas** - zOS, zLinux, Databases, CICS, SAP
- **Unicamp Brazil** – z/OS, z/VM, and Linux
- **Leipzig Germany** – z890
- **Syracuse University NY**
- **IBM TX** – Customized software stacks
- **NC A&T** – z/VM and Linux
- **China Universities (6 Systems)**



## Remote access to System z from Marist College NY

- **173 schools are using the System z via the internet**
- **419 faculty**
- **3,459 active student accounts**

Marist College System z Staff







## Schools WW Accessing System z at Marist College

South Central Tech. College  
Humber College  
Northeastern Illinois University  
Marist College  
Texas State Technical College  
Fox Valley Technical College  
Metropolitan Community College  
Malone College  
Dutchess Community College  
University of Hawaii  
Vilnius Gediminas Technical University  
Westchester Comm. College  
Skagit Valley College  
Bloomsburg University  
California University of Pennsylvania  
Cheyney University  
Clarion University  
East Stroudsburg University  
Edinboro University  
Indiana University of Pennsylvania  
Kutztown University  
Lock Haven University of Pennsylvania  
Mansfield University  
Millersville University  
Shippensburg University  
Slippery Rock University  
West Chester Univ of PA  
Laval University Quebec Canada  
University of Arkansas  
Indiana State University  
Trevecca Nazarene University  
Griffith University Australia  
NJIT  
Polytechnic University of Turin  
Frederick Community College  
Fairleigh Dickinson University

Oslo University College  
St Ambrose University  
IBM Corporate University  
DePaul University  
OSDL  
Bauman Moscow State Technical University  
University IBM Svenska AB(KTH) Sweden  
Ateneo de Manila University  
University of Toledo  
North Carolina Central Univ.  
Clarkson  
Clarke College  
Asia Pacific College  
University Sains Malaysia  
Cincinnati State  
Czech Technical University  
Columbus State University (Georgia)  
Georgian College Toronto  
Northeastern University  
Mohawk College  
University of Toledo  
Marquette University  
Ryerson University Canada  
Columbia University  
Illinois Central College  
Northern Arizona University  
Dominican University  
Syracuse University  
Gardner-Webb University  
Illinois State University  
New York Institute of Technology  
Southern Polytechnic State Univ  
CeGEP DE THETFORD  
St Lawrence College Ontario  
Southern University  
Loyola College  
Maryville University

University of Houston-Downtown  
Long Island University  
West Virginia University  
North Carolina State Univ.  
Tecnologico De Monterrey College  
Houston Community College  
West Texas A&M University  
Seton Hall University  
Widener University  
Pace University  
Purdue University  
Eastern Illinois University  
University of Delaware  
Radford University  
Central Missouri State University  
Georgia Tech  
Utah Valley State College  
San Jacinto College  
School of Information Technology, KMUTT  
Seneca College  
University of South Carolina  
Prince Georges Community College  
Estrella Mountain Community College  
City University of New York  
University of Valencia  
University of Alabama Birmingham  
Minnesota State University  
National Hispanic University  
University of Houston Victoria  
Yildiz Technical Univ. Turkey  
University of Western Ontario  
San Francisco State University  
San Jacinto College - Central  
Massachusetts Institute of Technology  
Universidade Tuiuti Do Parana  
University of Bristol  
North Carolina A&T State University

University of Texas at Arlington  
University of Maryland  
Indian Hills Community College  
Prince of Songkla University in Thailand  
University of the Philippines  
Humbolt University Germany  
Northern Illinois University  
University of Nebraska at Omaha  
University of Denver  
Shenkar University  
Loras College  
Devry University  
SUNY New Paltz  
Tecnologico De Estudios Superiores De Monterrey  
University of Montana-Helena  
Georgian College of Applied Arts and Technology  
George Mason University  
San Jose State University  
Le Moyne College  
Hutson-Tillotson University  
KBU International College  
Instituto Politecnico Nacional in Mexico  
Lakeland Community College  
Collin College  
Tel Aviv Yaffo in Israel  
Dakota State University  
Kongu Engineering College in India  
Brigham Young University - Idaho  
University of Texas at Dallas  
Cambridge International College (Australia)  
Columbus State Community College (OHIO)  
Coburg University of Applied Sciences, Germany  
Salt Lake Community College  
Boston University's Metropolitan College  
Combiatore Institute of Technology  
RCC Institute of Technology  
Stevens Institute of Technology



# University of Arkansas – System z Student & Faculty Accounts over last 2 academic years

Number of faculty	Number of courses	Number of students
471	91	1941

**Number of International universities – 59 in 28 countries**

**Number of USA universities – 155 located in 36 states**



## IBM Destination z - Mainframe Community

### Academic partners

Bauman Moscow State Technical University Russia  
Cegep de Thetford, Quebec, Canada  
Estrella Mountain Community College  
Fox Valley Technical College  
Houston Community College  
Huston-Tillotson University  
Illinois State University  
Marist College  
Minnesota State University, Mankato  
Montclair State University  
Prince George's Community College  
Republic Polytechnic, Singapore  
Rochester Institute of Technology  
Syracuse University  
University of Alabama at Birmingham  
University of Arkansas  
University of Maryland Eastern Shore  
University of South Carolina  
University of Valencia, Spain

### 2009 Enterprise Computing Scholarship winners

**Sandeep Basnet**, Illinois State University  
(Greg Zaubi Memorial Scholarship Winner)  
**Scott Wetter**, Marist College  
**Min Jiang**, Illinois State University  
**Niranjana Sharma**, Illinois State University  
**Wenbo Zhang**, Syracuse University  
**Deep Shah**, Syracuse University  
**Shiyuan Chen**, Syracuse University

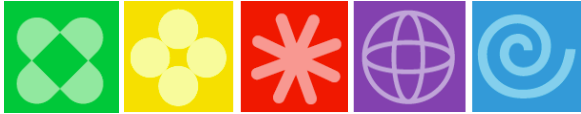




## Community - SHARE

- **AI focus at SHARE**
  - Increase program awareness
  - Key to driving educator & student attendance
  - Build relationships, make academic/customer connections
  - 13+ Universities, 250+ students
- **Sessions**
  - *zNextGen Project Opening and Keynote*
  - *Head of the Class: Professors' Perspectives on Mainframe Education*
  - *Mastering System z - Entry Level Systems Programmer Mastery test*
  - *Virtualization and Open Systems Pave the Way to System z*
- **Professors prominently highlighted at SHARE**
  - SHAREnews Daily
  - System z keynote presentation, *Empowering the Next Generation to Support the Mainframe's Leading Role in Enterprise Architecture*
  - Press Release: *Next Generation of Enterprise IT Professionals on the Rise at SHARE*
- **2010**
  - Academic / Industry session





## ECC Industry and Academic Partners

AAFES	Deputy CIO for Strategic & Governance, State of NY	MetLife	USAA	Metro Community College
ACM	DTCC	Micro Focus	Vanguard Integrity Professionals	Mills College
Aetna	Dynamic Research and Evaluation	Morgan Stanley	Verizon	Monroe College
Amdahl Corporation	eBusinessware	NEON	Vicom Infinity, Inc.	North Carolina Central University
Anheuser-Busch	EDS	NRECA	Vinveo	Northern Illinois University
Automated Software Tools Corp.	EMC	NYS CIO and Dir of Office Tech	Wachovia	OCM Boces
Bank of America	Experian	NYS Judiciary	Walsh Construction	Pace University
BB&T Bank	Fatwax, Ltd	Phoenix Software International	WinterGreen Research	Palm Beach Community College
BBVA Compass Bank	Federal Government	Pi-GmbH	WU Wien	Rochester Institute of Technology
Blue Line Planning	Foot Locker	Power Management Concepts	YearUp	Rutgers Univ
BMC Software	GDIT (Gen. Dynamics Info Tech)	Progressive	ZIVIT-Germany	Ryerson University
BOL	Generali	Red Hat	Academy of Humanities and Economics in Lodz	San Jacinto College
Boscovs, LLC	GHG Corporation	Regions Bank	Baruch College	San Jose State University
Broadridge	Goldman Sachs & Co.	Select Business Solutions	CUNY	Southern University
CA, Inc.	GT Software	Shands HealthCare	Bauman Moscow State Technical University	Stevens Institute of Technology
Capgemini	HMS	Standard Bank of South Africa	Binghamton University	Suffolk University
Cegep Thetford	HSBC Bank	State Farm Insurance	Cal State University of Long Beach	SUNY Upstate Medical University
CGI-Canada	IBM	State of Oregon – ODOT	Collin College	SUNY, New Paltz
Chubb	Infobrella, Inc	State Offices of NY	Columbia-Green Comm. College	Syracuse Central School District
Citigroup	Interskill Learning	Sterling Commerce	Cuyahoga Community College	Syracuse University
Citigroup Technology, Inc.	IR-Application Services	Supervalu	DeVry University	Tongji University
Clabby Analytics	JPMorgan Chase	Syntel Ltd (India)	Eastern Illinois University	Universidad Distrital University
Cleveland institute of electronics	JT Packard	System z/mainframe Technologies & Solutions	Illinois State University	University of Arkansas
Clipper Group Partner	la Caixa	The Clipper Group	Lakeland College	West Texas A&M University
Comcast	Leviton Network Solutions	The Trainer's Friend, Inc.	Leipzig University / Tuebingen university	ACM Student Chapter
Computers & Publishing, Inc.	Longpela Expertise	TNINC	Lewis University	Westchester Community College
Compuware	Mayo Clinic	Travelers	Marist College	Widener University
Credit Suisse	Medco	Trilobyte Systems		
CSC		UBS		
Datacenter Pulse (EU)				



## Survey Results – Enterprise Systems Roundtables

	<b>Strongly Required</b>	<b>Required</b>	<b>Not Required</b>
Application development	33.33%	52.33%	16.33%
Architecture	33.33%	62.33%	4.34%
Assembler	18.43%	46.37%	35.20%
Capacity planning	38.00%	39.67%	22.33%
CICS	40.96%	43.67%	15.37%
COBOL	34.14%	38.35%	27.51%
DB2	36.60%	44.50%	18.90%
Disaster recovery	6.67%	53.33%	40.00%
IMS	11.60%	28.40%	60.00%
Linux	24.33%	42.73%	32.94%
Messaging Queuing	27.00%	68.33%	4.67%
Networking	37.33%	43.07%	19.60%
Performance management	26.33%	52.33%	21.33%
	<b>Strongly Required</b>	<b>Required</b>	<b>Not Required</b>
Security	36.03%	46.67%	17.30%
Storage	38.00%	57.33%	4.67%
SOA	26.33%	58.00%	15.67%
System Administration	32.00%	41.67%	26.33%
VSAM	16.67%	57.00%	26.33%
WebSphere/Web Development	16.33%	59.00%	24.67%
z/OS (ISPF, TSO, JCL)	69.54%	24.23%	6.23%
z/VM	18.63%	33.17%	48.20%
z/VSE	4.67%	44.00%	51.33%



## Growing trend in academia - **Enterprise** (watch this space with **IBM System z**)

- Enterprise Computing Community – National Science Foundation grant

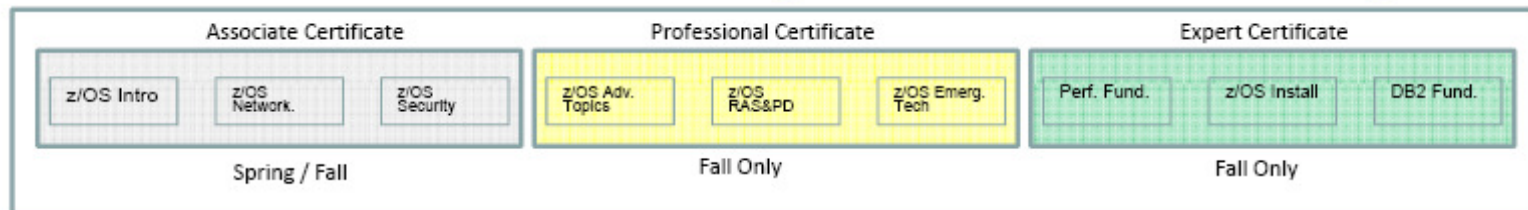
<b>Syracuse University</b>	Enterprise Technologies
<b>DeVry University</b>	Enterprise Systems Specialization Track
<b>Stevens Institute NJ</b>	Enterprise Systems Graduate Program
<b>Marist College NY</b>	Large Systems education and ECC
<b>Illinois State University</b>	Enterprise Computing Systems Curriculum
<b>Penn State University</b>	Enterprise Systems Architecture
<b>Rochester Institute of Technology</b>	Enterprise Systems Architecture
<b>University of South Carolina</b>	Center for Enterprise Systems Management
<b>University of Arkansas</b>	Director of Enterprise Systems – David Douglas

- Growing popularity in Historical Black Colleges and Universities
  - **North Carolina Central University, University of MD East Shore, NC A&T, Southern University LA**



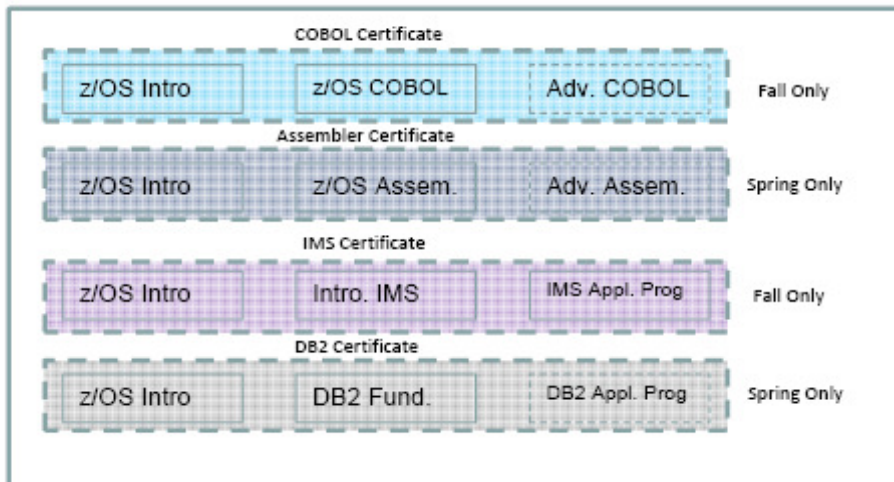
# Marist College

## z/OS Certificate Program – Marist College



### System Programming Track

### Application Programming Tracks



- **Certificates: 7**
- **Unique Courses: 16**





# CERTIFICATE IN MFA Mainframe Administration

"25 of the top 25 WW banks run on z."

"9 of the top 10 global life/health insurance providers run on z."

"71% of Fortune Global 500 are System z clients."

"64% of Fortune 500 (US) are System z clients."

"2/3 of business transactions for US retail banks run directly on mainframes."

"80% of world's corporate data resides or originates on mainframes."

"23 of the top 25 US retailers run on z."

"A mainframe averages decades between server outages."

"A single z series server can run thousands of virtual Linux servers."

Evaluation exam for full scholarships for a Certificate in MFA will be held at the University of Denver, Sturm Hall #251 on December 10th from 6 - 8 PM.

For more information call  
Samantha Houck (303) 871.2458  
or visit <http://cs.du.edu/mfa>

Sponsored by:



System z10



## Get Ahead with Mainframe Programming Classes

*FVTC is a member of the IBM Academic Initiative*

### Advantages:

- 53% of mainframe workers have 20+ years of experience and are near retirement! 60% of mainframe capacity shipped today comprises of "new workloads," including Linux, IBM WebSphere, SAP and other leading enterprise business applications
- Weekend classes to fit your schedule (Fridays 5-9 p.m. & Saturdays 8 a.m.-4 p.m.)
- Meets only seven weekends throughout the winter/spring semester
- Four classes available (prerequisites apply); take all four to earn an 11-credit certificate in Mainframe Programming
- Classes are offered in a blended format, meaning you'll learn in the traditional classroom setting along with self-paced study. (Blackboard will be used as a central online communication location for class information.)

**Classes start in the winter/spring semester only, so register today!**  
To register for any of these classes, visit [www.fvtc.edu](http://www.fvtc.edu).

*For both new and experienced programmers*

These classes are a combination of structured classroom time on specific Friday evenings and all-day Saturday sessions in addition to Web-enhanced instruction.

### Operating Systems and Data Management

January 10-February 15, 2008

**Meetings:** 5:00-9:00 p.m.  
Fridays, 1/18 and 2/8;  
8:00 a.m.-4:00 p.m. Saturdays, 1/19 and 2/9

**Location:** Appleton Campus

**Class Number:** 90274

- Learn z/OS basics, TSO/E, basics of the end-user interface ISPE, ISPF utilities, principles and techniques of Job Control Language, memory management, working with datasets including VSAM files, batch processing and JES

### Computer Programming COBOL I

February 18-March 28, 2008

**Meetings:** 5:00-9:00 p.m.  
Fridays, 2/22 and 3/7;  
8:00 a.m.-4:00 p.m. Saturdays, 2/23 and 3/8

**Location:** Appleton Campus

**Class Number:** 90184

- Learn to write programs in the COBOL language using structured programming techniques. Introducing report design and control break processing
- Understand how to avoid and correct programming errors

### COBOL 2 using CICS

March 31-May 16, 2008

**Meetings:** 5:00-9:00 p.m.  
Fridays, 4/4, 4/18 and 5/9;  
8:00 a.m.-4:00 p.m. Saturdays, 4/5 and 4/19

**Location:** Appleton Campus

**Class Number:** 90185

- Learn more advance programming techniques in COBOL programs including table handling and file maintenance
- Learn the concepts of online programming using CICS/VS commands in COBOL programs, debugging techniques, task control and data management

### Structured Query Language SQL

January 10 - May 16, 2008

**Meetings:** Offered both in the classroom and fully online  
Call 996-2952 for more information.

**Location:** Appleton Campus

**Class Number:** Varies depending on section

- Learn relational concepts and theory while writing interactive SQL code to create, load, manipulate and query relational tables
- Explore the concepts of fourth-generation languages, end-user computing and prototyping

**Take all four classes to earn a certificate in Mainframe Programming in just one semester!**

Rose Guthrie • (920) 996-2952 • e-mail: [guthrie@fvtc.edu](mailto:guthrie@fvtc.edu)
















# Introduction To Enterprise Servers

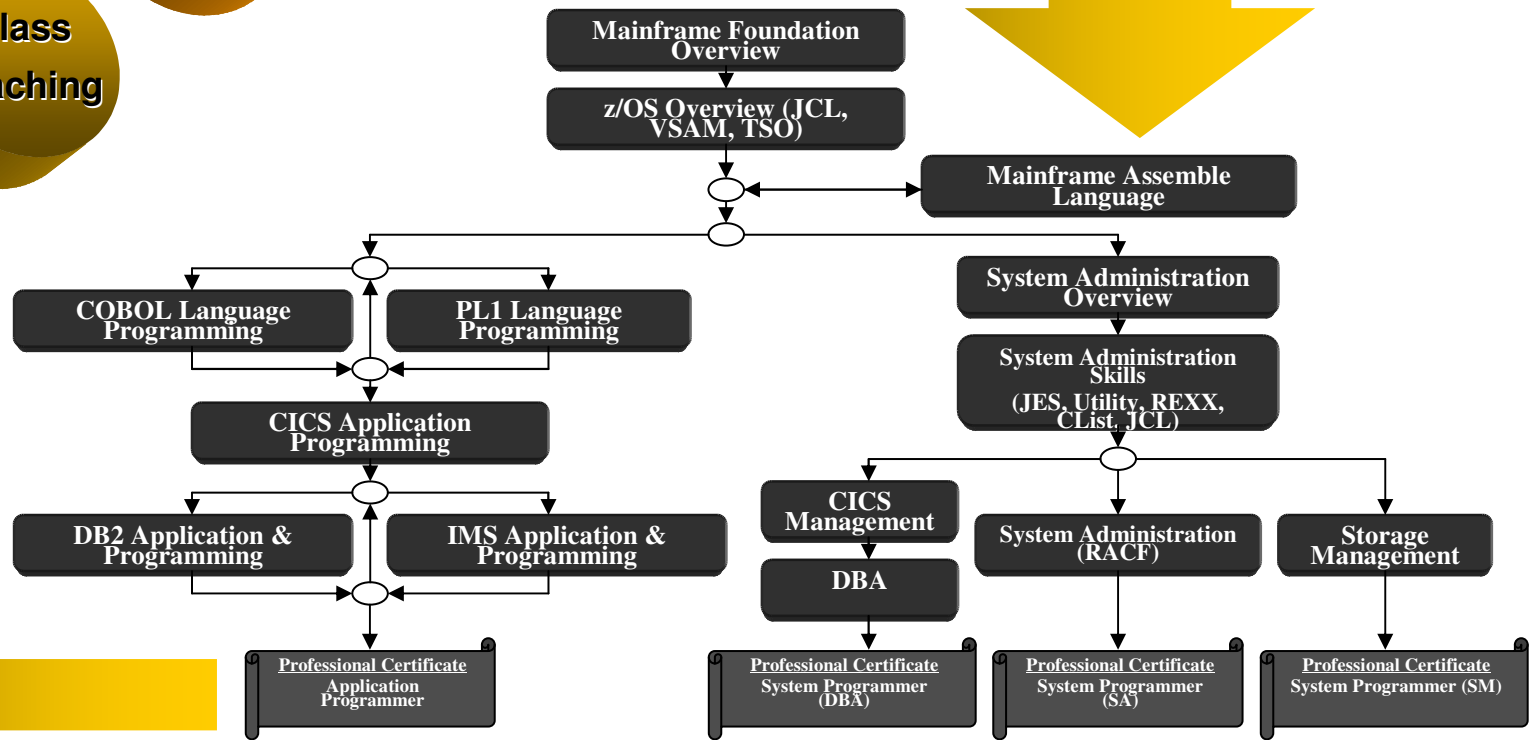
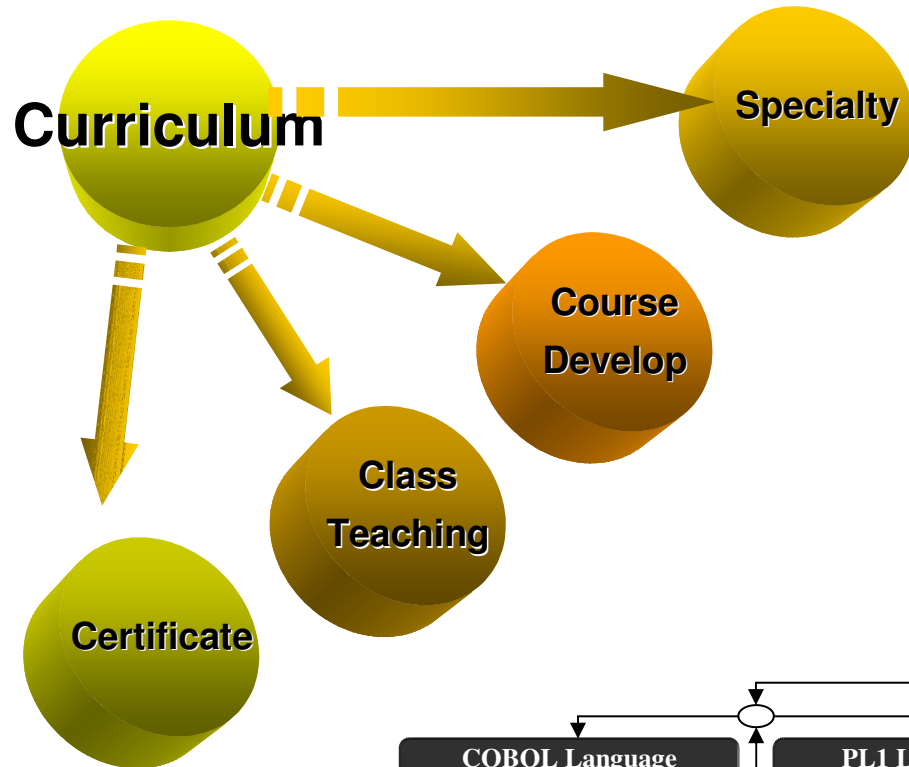
## ■ Objectives

- To be able to explain the benefits of a z Series in an appropriate computing environment
  - RAS, Parallel Sysplex, consolidation, TCO, etc.
- To be operational proficient working in the TSO/ISPF environment
  - Create PDSs, members, copy/edit, etc.
- To be able to develop knowledge and skills to develop illustrative applications
  - Cobol, JCL, VSAM, DB2
- To be able to explain the benefits of zLinux in an appropriate computing environment
- To be operational proficient working with zLinux
- To be able to develop data driven open source Web applications
  - Linux, Apache, MySQL(& DB2), PHP



## China - Partner Universities with Academic Initiative

LOGO	FULL NAME & LOCATION	LOGO	FULL NAME & LOCATION
	<b>Peking University</b> <i>Beijing (Education Center)</i>		<b>Tongji University</b> <i>Shanghai (Education Center)</i>
	<b>Huazhong University of Science and Technology</b> <i>Wuhan (Education Center)</i>		<b>South China University of Technology</b> <i>Guangzhou (Education Center)</i>
	<b>University of Electronic Science and Technology</b> <i>Chengdu (Education Center)</i>		<b>Dalian Jiaotong University</b> <i>Dalian (Education Center)</i>
	<b>Sichuan University</b> <i>Chengdu</i>		<b>Dalian University of Technology</b> <i>Dalian</i>
	<b>Chongqing University</b> <i>Chongqing (New)</i>		<b>Southeast University</b> <i>Nanjing (New)</i>
	<b>Shenzhen University</b> <i>Shenzhen (New)</i>		<b>Yunnan University</b> <i>Kunming (New)</i>
	<b>Northeast University</b> <i>Shenyang (New)</i>		





## AP examples

- Singapore
  - Republic of Polytechnic  
**RHEL/zLinux and z/VM course module in 2009 Semesters.**  
**Collaboration between IBM-RP is being reviewed with Citigroup, willing to be industry sponsor for recruitment and professional training**
- Thailand
  - KMUTT  
**Teaching the following courses...**  
**ES2000: Linux on zSeries Full semester; slides with speaker notes, labs, tests**  
**ES2001: Introduction to z/VM Full semester; slides with speaker notes, labs, tests**
  - Sripatum university  
**Interested in teaching z/OS in computer science course. Still in preliminary discussion stage.**
  - Khon Kaen University  
**Another target university, in North of Thailand. Waiting for chance to present zAI program.**
- Malaysia
  - KBU  
**T3 conducts 4Q08. Faculty staff using remote access to Marist College to develop Faculty skills.**  
**Plan to offer z/OS course to students in 2009 semester**  
**Working on recruitment program with IBM Malaysia and customers**
- Philippines
  - University of Philippines  
**Teaching COBOL Programming**
  - Asia Pacific College  
**Teaching COBOL Programming**
  - Mapua Institute of Technology  
**Interested in teaching z course. Philippines customer may want to donate their old 9672 mainframe to university but still in discussion stage.**



## Italy examples

### Sapienza Università di Roma

- ❑ 2006/2007 – Seminar - First level degree - 70 students
- ❑ 2007/2008 - Full formal course 12 x 2 hours + 12 x 2 hours labs - 25 students
- ❑ 2008/2009 - Full formal course 12 x 2 hours + 12 x 2 hours labs - 40 students
- ❑ 2009/2010 - Full formal course 12 x 2 hours + 12 x 2 hours labs - starting



### Università di Catania

- ❑ 2005/2006 – Science of Information – Full formal course - 170 students
- ❑ 2006/2007 – Full formal course 12 x 2 hours - 120 students
- ❑ 2007/2008 – Full formal course – 60 students.
- ❑ 2008/2009 - Full formal Course – 60 Students – Credits Doubled - Examinations
- ❑ 2009/2010 - Full formal Course – 60 Students – Credits Doubled (planned for March 2010)



Almost 1,000 Students!

### Politecnico di Bari

- ❑ 2005/2006 – Engineering and Electronics - Seminar - 90 students
- ❑ 2007 UniBari buys System z9 BC



### Università di Palermo

- ❑ 2005/2006 – Institute of Engineering – Full formal course – Master degree – 70 students
- ❑ 2006/2007 – Institute of Engineering – Full formal course – Master degree – 96 students
- ❑ 2007/2008 – Institute of Engineering – Full formal course – Master degree – 50 students
- ❑ 2008/2009 – Institute of Engineering – Full formal course – Master degree – 70 students
- ❑ 2009/2010 - Institute of Engineering – Full formal course – Master degree – 70 students (planned 11/09)



### Seconda Università di Napoli

- ❑ 2006/2007 – Seminar - First level degree - 25 students





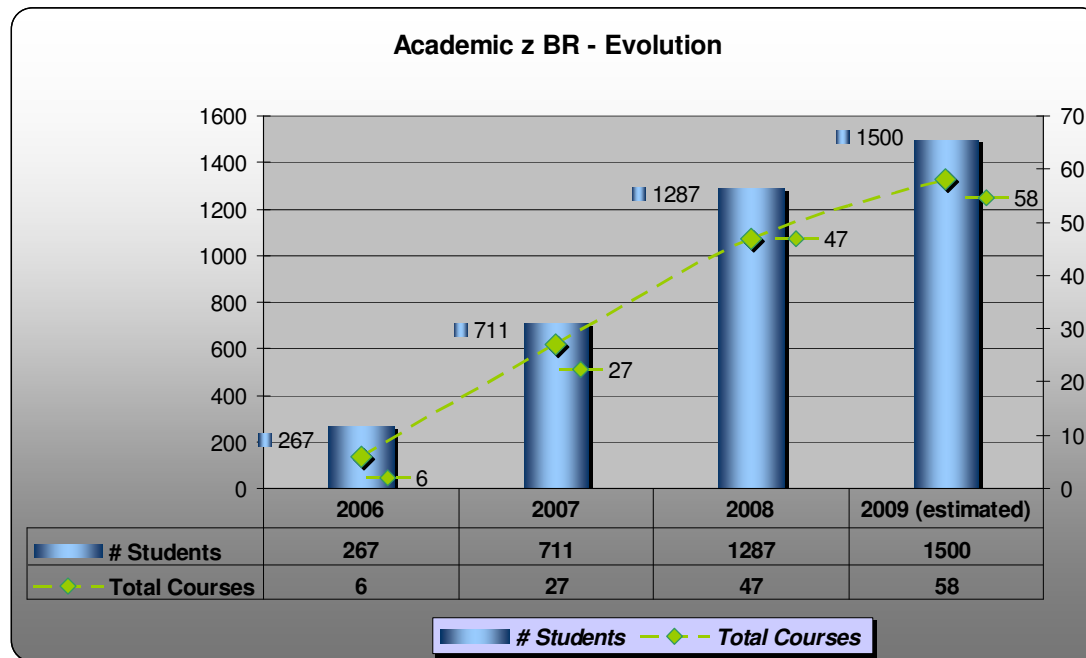
## Germany - Academic Initiative for System z, Status 12/2009

1. IT Akademie Bayern - Ausbildungsprogramm
2. Humboldt Universität Berlin und TU Berlin - Mainframe Summit
4. Hochschule Bochum - Sommerseminar
5. Technische Universität Chemnitz - Online-Praktika
6. Fachhochschule Coburg - Lehrveranstaltung
7. Fachhochschule Darmstadt - Online-Praktika u. Gastvorträge
8. Technische Universität Darmstadt - Vorlesung
9. Technische Universität Dresden - Lehrveranstaltungen
10. Universität Duisburg-Essen – Lehrveranstaltung
11. Hochschule Esslingen - Vorlesung
12. Universität Hamburg – Hanseatic Mainframe Summit
13. Fachhochschule Köln - Seminar
14. Universität Leipzig - Vorlesungen u. Online-Praktika
15. Fachhochschule Lüneburg - Online-Praktika
16. Berufsakademie Mannheim - Vorlesung
17. Technische Universität München – Ringvorlesung
18. Universität Münster - Vorlesung u. Praktika
19. Fachhochschule Schmalkalden - Online-Praktika
20. Fachhochschule Stuttgart - Online-Praktika
21. Hochschule der Medien Stuttgart - Vorlesung
22. Universität Tübingen - Vorlesungen u. Online-Praktika
- ... more to come (i.e.: Universität Karlsruhe as #23)



## System z Academic Initiative Brazil - Results

- Students Trained, Deployed Courses, Schools Connected and zLectures
  - 3295 students and 50 teachers trained, through 116 courses in 50 institutions since August 2006.
  - 104 System z Lectures in universities and schools for 8685 students, since 2006.
  - 10 Post Graduation Mainframe Classes – UniverCidade (RJ), FIAP (SP), UniCeub and Faculdade Alvorada (DF)
  - More than 100 students hired in IBM, partners and customers.







## Summary

- ***IBM continues to invest in developing more mainframe skills for the community***
- ***The mainframe community (ambassadors) continues outreach to educators world wide***
- ***The number of schools and the program continues to grow***
- ***IBM Clients are connecting with System z Academic Initiative member schools***
- ***There are frequent examples of hiring and investment in mainframe skills***





## Important web sites and contacts

- **Academic Initiative for the Mainframe**
  - [ibm.com/university/systemz](http://ibm.com/university/systemz)
- **z/OS Entry Level Mastery Exam & DB**
  - [ibm.com/certify/mastery\\_tests/ovrZ01.shtml](http://ibm.com/certify/mastery_tests/ovrZ01.shtml)
- **Courses and training**
  - [ibm.com/systems/z/about/charter/skills.html](http://ibm.com/systems/z/about/charter/skills.html)
- **For assistance, contact:**
  - [zskills@us.ibm.com](mailto:zskills@us.ibm.com)
  - Don Resnik, [resnik@us.ibm.com](mailto:resnik@us.ibm.com)
  - Kathy Pfeiffer, [pfeiff@us.ibm.com](mailto:pfeiff@us.ibm.com)



THANK  
YOU