



# Collaborative Lifecycle Management enabling agile development

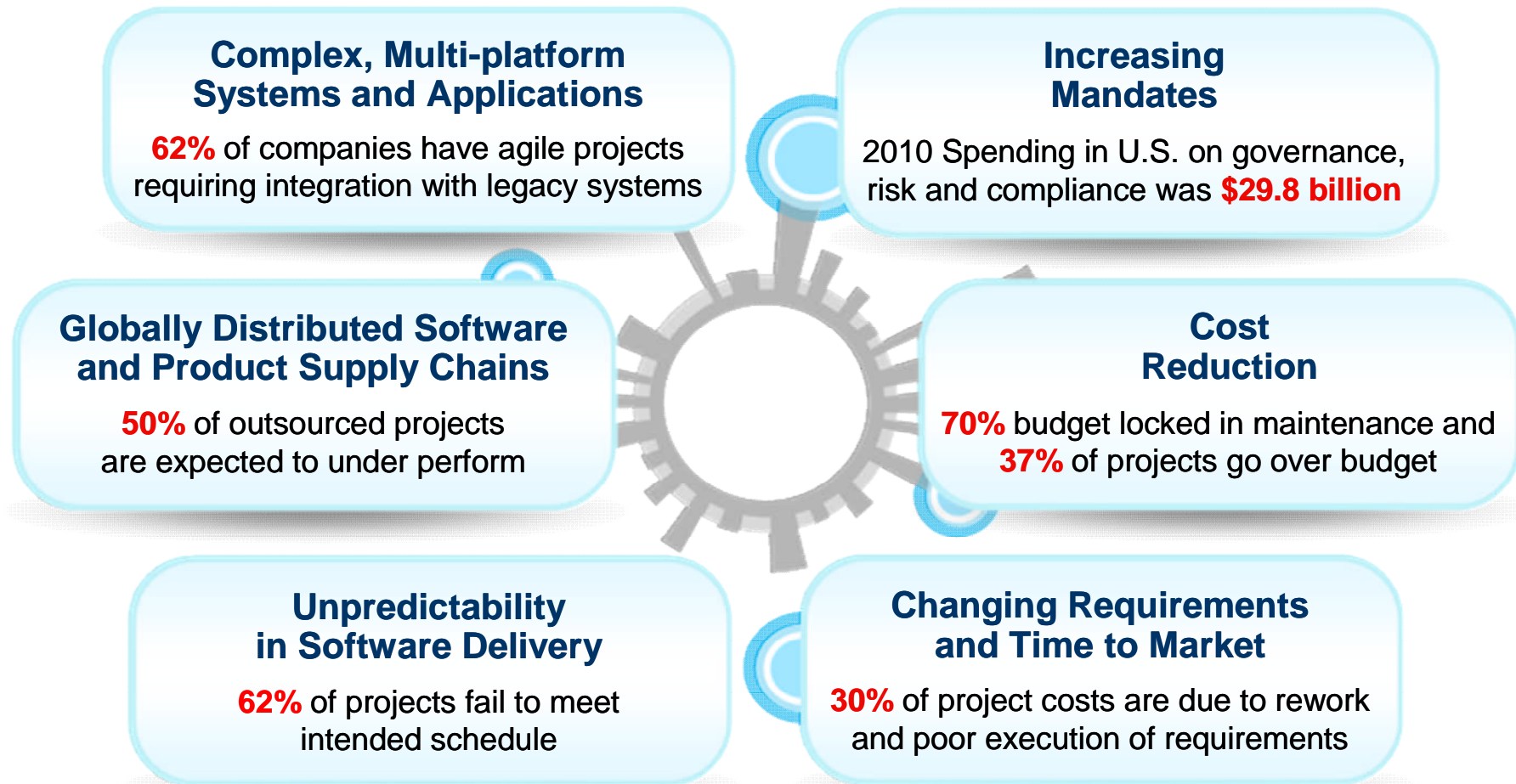
Brian Colbert – Enterprise Modernization Architect  
North America Rational S&D





# Realities can stall software-driven innovation

*Complexities in software delivery compounded by market pressures*





## What happens if you do nothing? When failure is not an option...

*“What happens if you can’t easily or effectively integrate your most critical software delivery applications?”*



*“What happens if your deliverable date slips?”*



*“What happens if you can’t effectively manage product quality before your ship/release?”*



\*Only 47% are successful, 36% are challenged, and 17% are failures

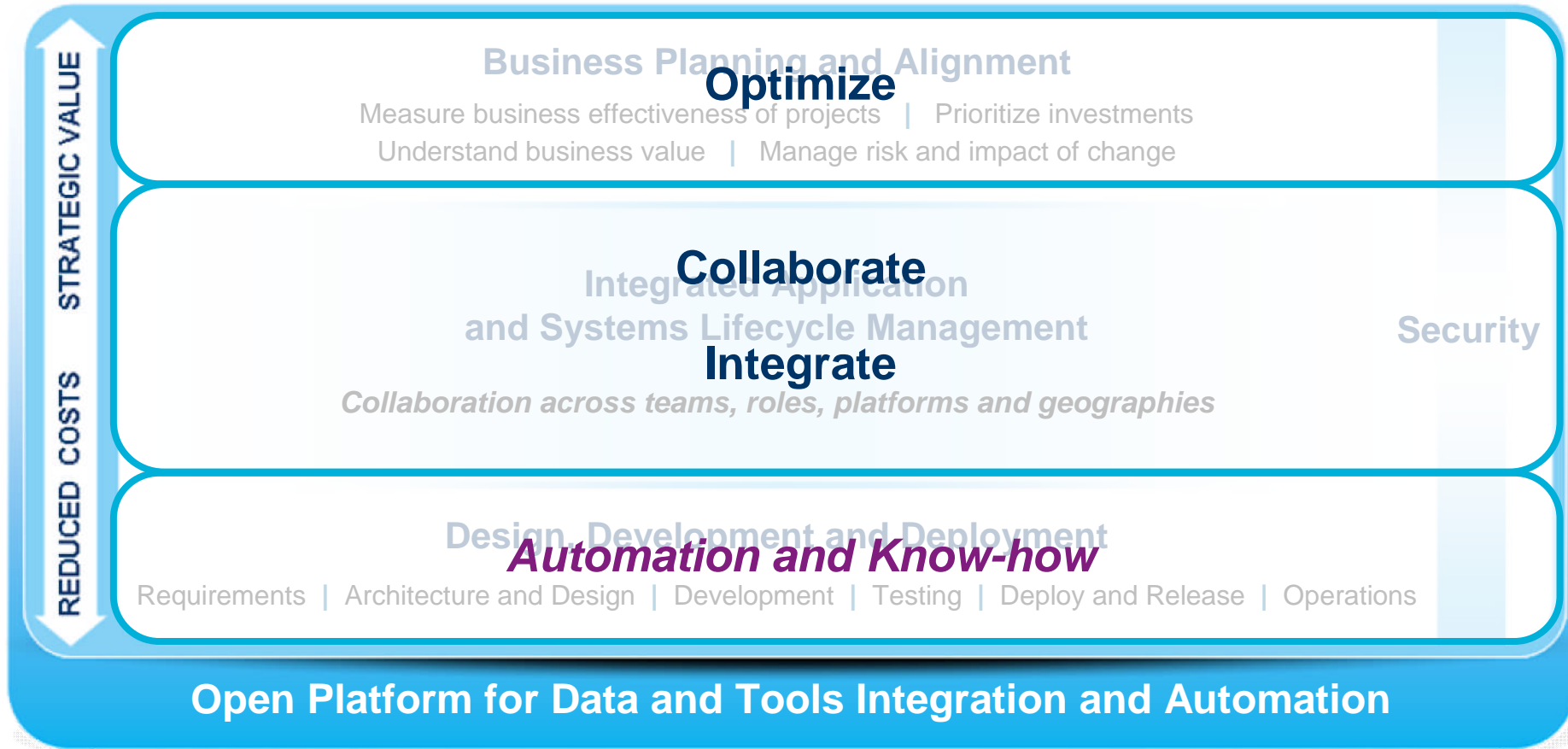


**Software failures do impact the bottom line!**



# Software-driven innovation with IBM Rational

## Addressing IT, systems, and enterprise modernization










## What is required to deliver end-to-end visibility across teams, tools and projects?

### Five Imperatives for Effective Application Lifecycle Management to improve organizational productivity



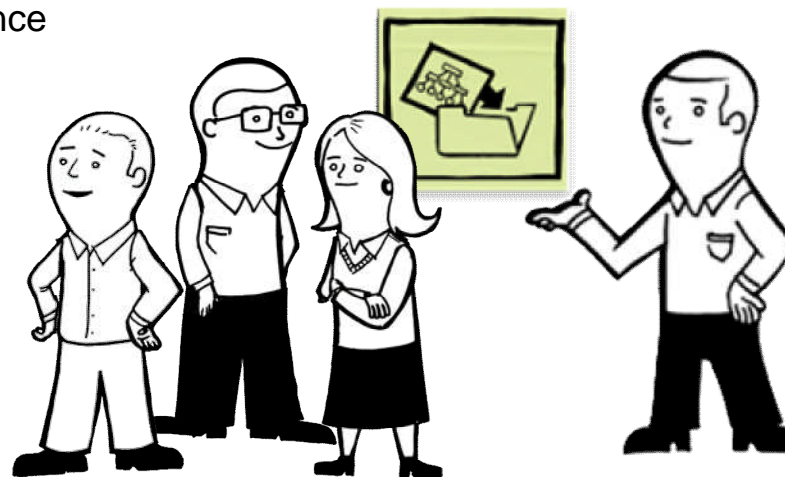
-  Maximize product value with **In-Context Collaboration**
-  Accelerate time to delivery with **Real-Time Planning**
-  Improve quality with **Lifecycle Traceability**
-  Achieve predictability with **Development Intelligence**
-  Reduce costs with **Continuous Improvement**

Learn more at [ALM Everywhere](#)



## In-Context Collaboration improves product value

- Teams can collaborate on and review software development artifacts while **incorporating feedback early and often to continuously** align delivery with the stakeholders' vision
- Provides a **single source of truth** hosted in a shared repository so team members can collaborate effectively around the globe and build a collective intelligence
- Makes **information immediately accessible** to all team members in the context of their work



## Real-Time Planning accelerates time to delivery

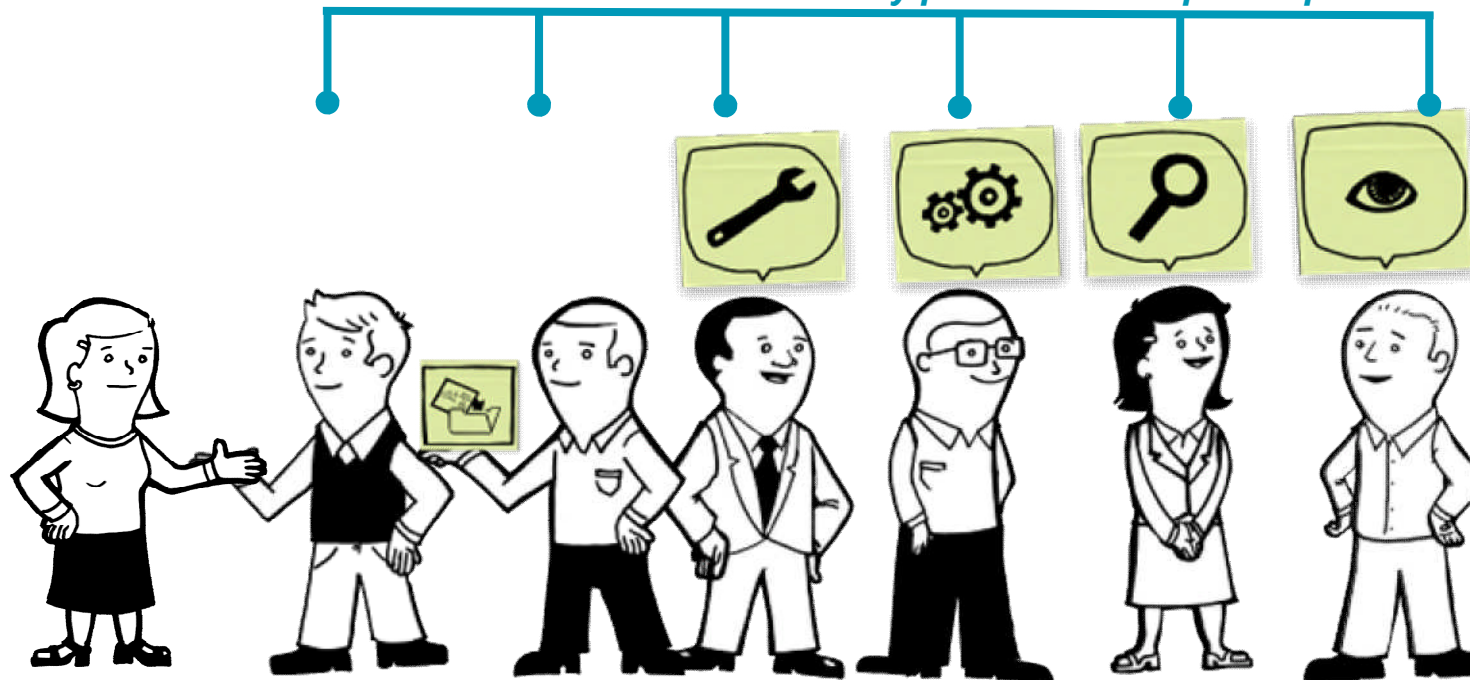
- Provides a **single plan** that spans requirements, development, and test, ensuring the whole team understands the overall scope of a project
- **Integrates planning with execution** ensuring the entire team understands the true project status
- Allows **everyone to participate** in keeping the plan current and accurate
- Helps teams **respond to the unexpected** in a timely manner ensuring the team stays on schedule



## Lifecycle Traceability improves quality

- Establish **relationships between software artifacts**
- **Identify and close artifact gaps**, ensuring **coverage** across disciplines
- Provide visibility into the **completeness** of planned items by inspecting all related artifacts
- Provide easy **access to related artifacts** ensuring everyone shares the same view
- Deliver transparency which enables everyone to make **fully informed decisions** based business priorities

*Instant access to details from any point in development process*



Customer

Final  
Product

Build Environment  
Artifacts

Supporting  
Systems

Requirements  
Management

Initial Idea

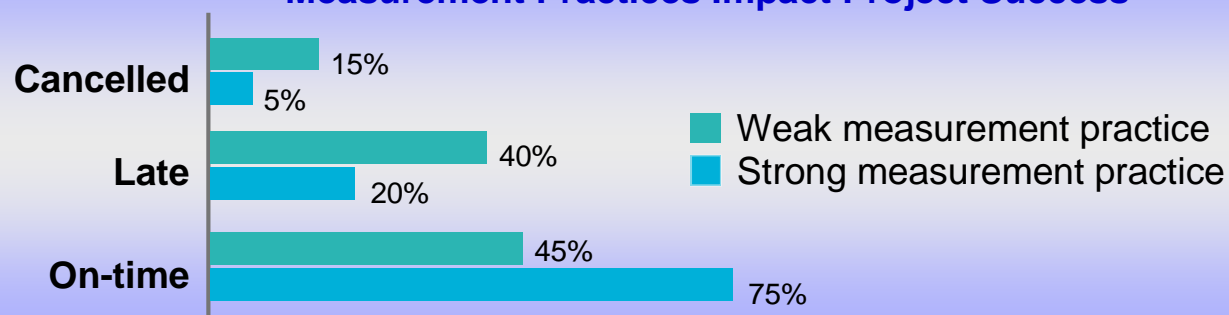
© 2012 IBM Corporation



## Development Intelligence improves predictability

- Enable **fact-based decision making** to communicate status, monitor progress, diagnose problems, identify corrective actions
- **Steer projects and programs** to deliver on-time
- Apply **Business Intelligence techniques** to software and systems development

Measurement Practices Impact Project Success



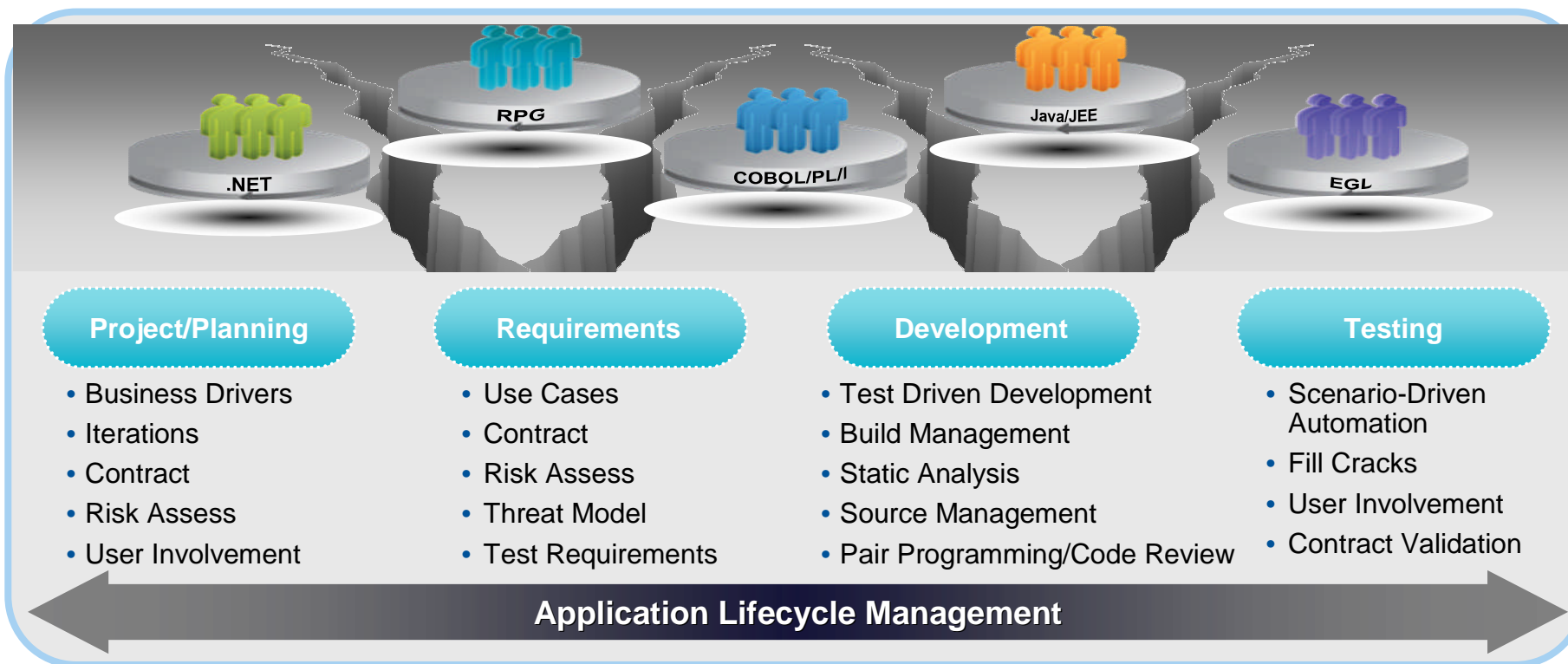
## Continuous Improvement reduces cost

- Improve software delivery through the ongoing **adoption of best practices and automation** to reduce manual, non-creative and error prone tasks
- Promote **incremental improvement of a project** when needed
- Enable breakthrough improvement by **capturing best practices and reusing** across teams
- Allow **everyone to participate** with easy to adopt best practices at your fingertips.



## Enterprises want to...

*Deliver to market faster and cheaper by exploiting agile and test-driven development practices, effectively tracking end-to-end requirements, reducing team infrastructure costs and increasing cross-geo collaboration and governance*



## But...

*They have “islands” of development, each with different tools and processes that do not support real-time collaboration, integration, comprehensive oversight, or lifecycle traceability, all of which results in reduced quality and slower time to market*



# Transforming Software and Systems delivery requires Evolving from lack of ALM to Collaborative Lifecycle Management

## Lack of Appl. Lifecycle Mgmt

- SW investments not delivering the expected value
- Time to market issues due to delayed projects
- Customer satisfaction issues due to poor quality
- Inaccurate project planning
- Inability to invest on Innovative projects due to cost constraint



“At some point, you take a step back, and you realize you have an awful lot of **siload systems** that are **limiting transparency** across strategic projects.”

- Development Director *Temenos, Inc.*

## Collaborative Lifecycle Management

Optimize the flow of information, people, and process in an iterative cycle of software delivery activities to improve productivity in the areas of:

- Maximize **product value** with **In-Context Collaboration**
- Accelerate **time to delivery** with **Real-Time Planning**
- Improve **quality** with **Lifecycle Traceability**
- Achieve **predictability** with **Development Intelligence**
- Reduce **costs** with **Continuous Improvement**

## Enterprise Customers

### Chaotic

- Silo-ed teams – no collaboration
- lack of and/or disjoint process

Individual Focus

10

1

### Repeatable

- Tools per discipline
- Best practices per discipline
- No cross-discipline integration

Discipline Focus

2

### Defined

- Real time planning
- Team collaboration
- Process support (Agile, Iterative, Waterfall, Hybrid)
- Continuous Build & Test

Project Focus

ALM adoption steps

### Measured

- Development Intelligence
- SW dev. lifecycle traceability
- Cross teams collaboration
- Process Enactment
- Governance & Compliance

Dev Org. Focus

4

### Optimized

- Continuous process improvement
- Collaboration with Business Stakeholders and Operations
- Connecting Business Strategy and Delivery
  - DevOps lifecycle traceability
- Continuous Delivery

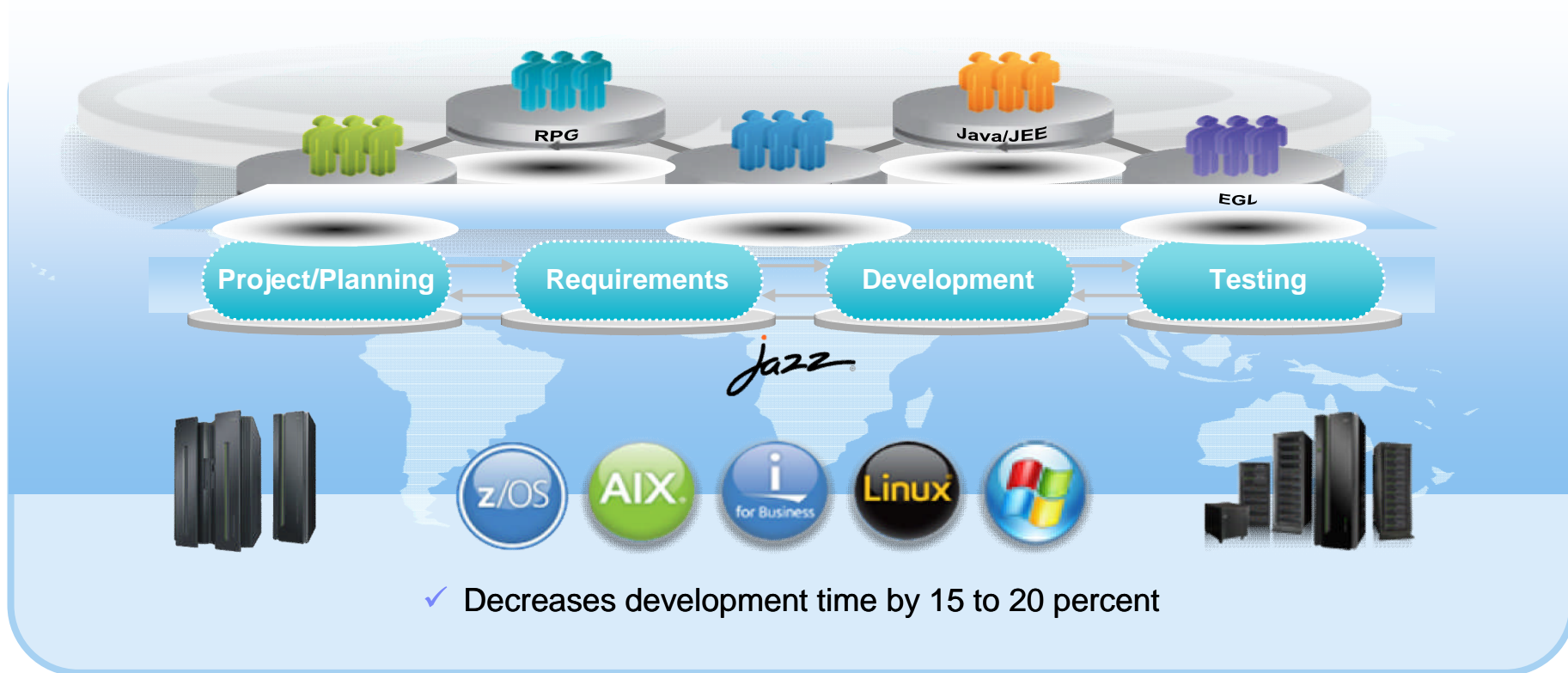
Business Value Focus

5



## Solution: Collaborative application lifecycle management

Deploy new, common team infrastructure for source control, change management and build that

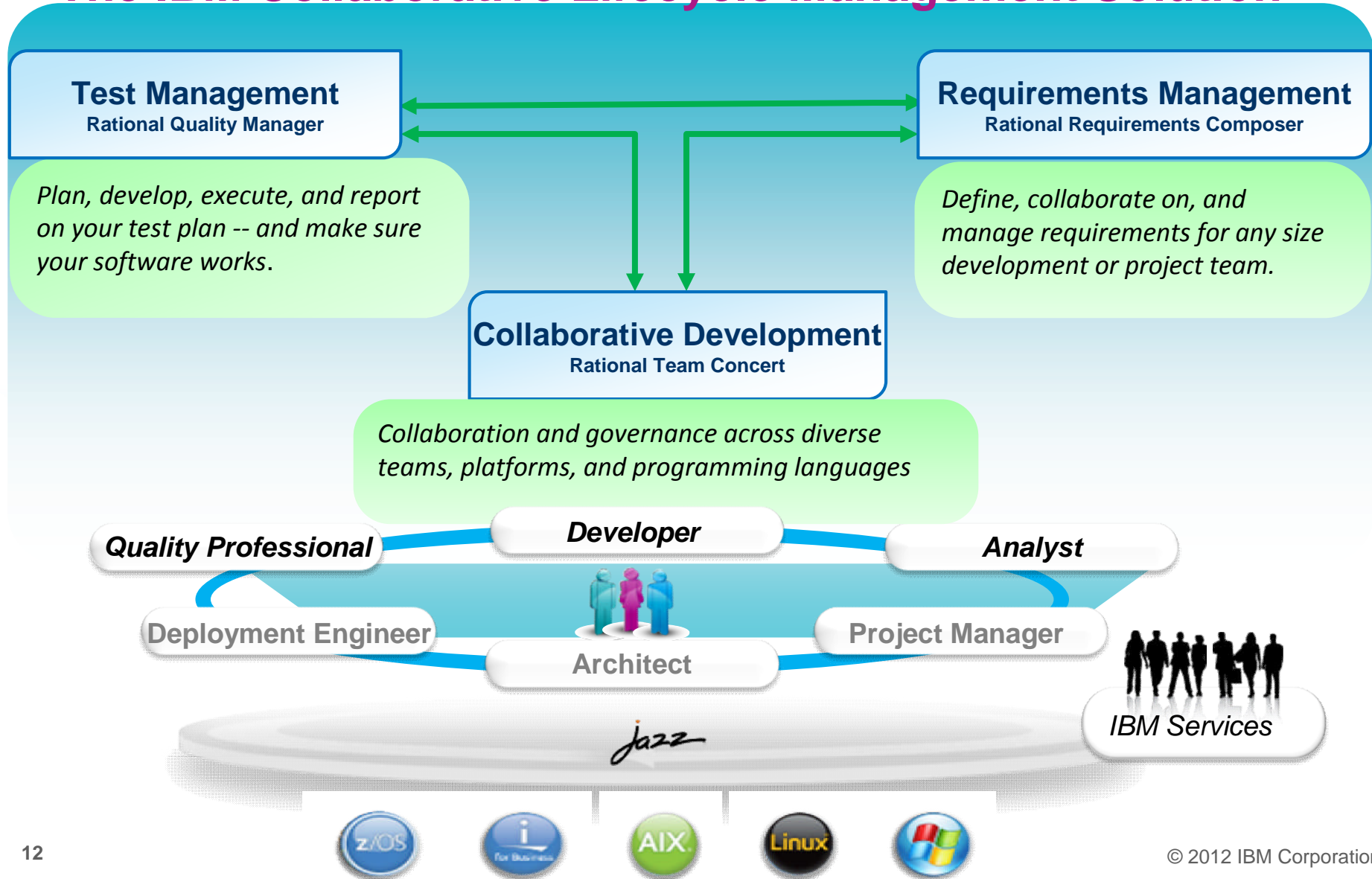


*“Thanks to Rational Team Concert software, our teams can collaborate and develop programs that are increasingly robust in a minimum of time, helping us meet the needs of our clients at a lower cost.”*

-- Open Programs Architect, A financial services company

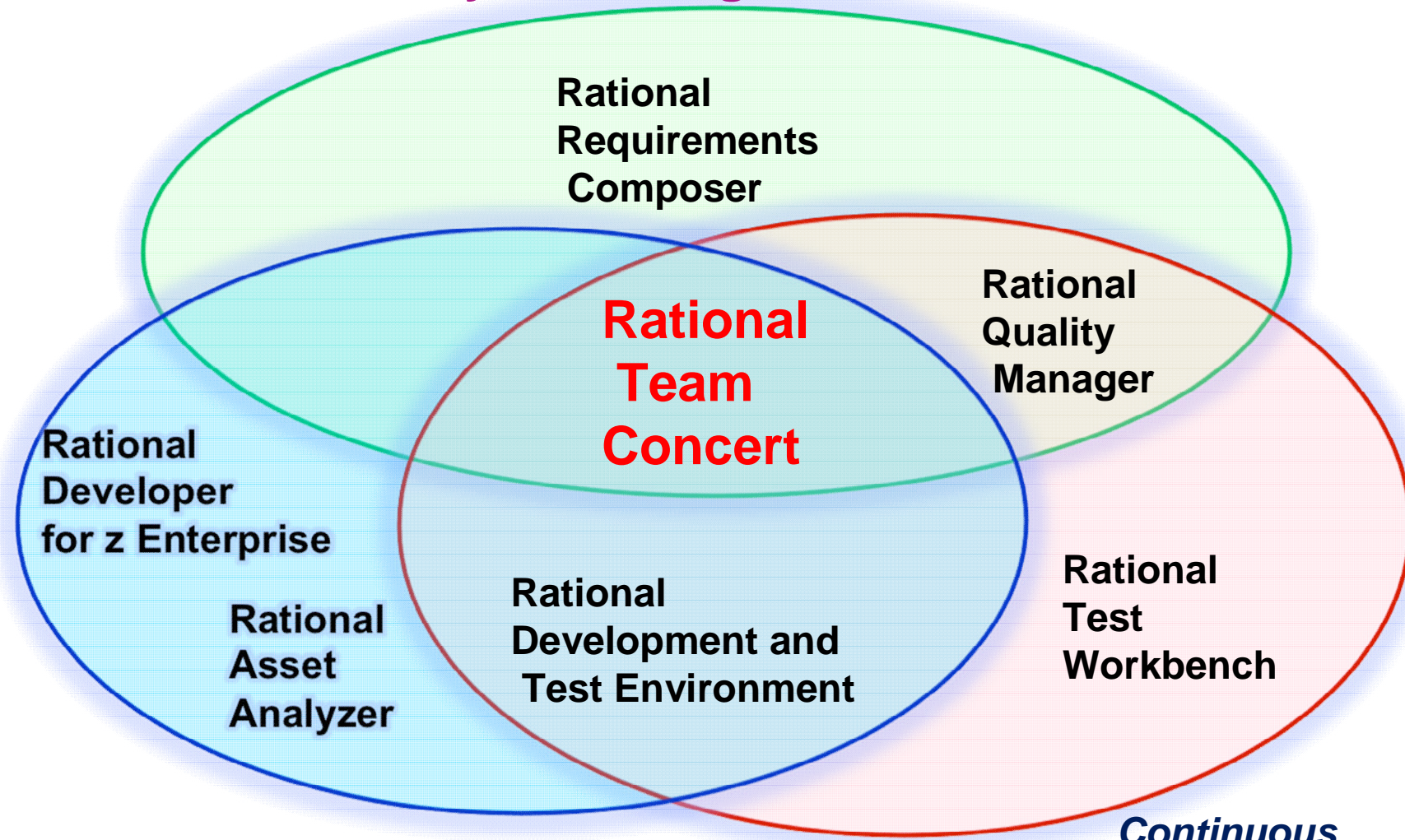


# The IBM Collaborative Lifecycle Management Solution





# Collaborative Lifecycle Management



*Integrated Solution  
For System z Development*

*Continuous  
Integration Solution  
for System z*



## Rational Team Concert: A Closer Look

### Planning

- Integrated release/iteration planning
- Effort estimation & progress tracking taskboards
- Out of the box process templates: formal or agile

### Project Transparency

- Customizable web based dashboards
- Real time metrics and reports
- Project milestone tracking and status

### SCM

- Component based SCM enables reuse across projects
- Change set based for easy addition or removal of features
- Server-based sandboxes
- Use RTC SCM or co-exist with a legacy SCM

### Work Items

- Defects, enhancements and conversations
- View and share query results
- Support for approvals and discussions
- Query editor interface
- Connects to ClearQuest or Change

### Build

- Automated work item and change set traceability
- Build definitions for team and personal builds
- Local or remote build servers
- Multi-level continuous integration
- Can integrate with BuildForge

### Jazz Team Server

- Single structure for project related artifacts
- World-class team on-boarding / offboarding including team membership, sub-teams and project inheritance
- Role-based operational control for flexible definition of process and capabilities
- Team advisor for defining / refining “rules” and enabling continuous improvement
- Process enactment and enforcement
- In-context collaboration enables team members to communicate in context of their work



# Enterprise Platform Capabilities - Dependency Build

- Build changed and impacted programs only
- Options:
  - Build subsets
  - Personal build
  - Preview build
  - Ignore changes
  - Rebuild

**Build Definition**

ID: mortgage.dev Project or Team Area: JKE Bank

General | Dependency Options

**Build File and Targets**

Generate a build file from these language definitions

JKE BMS map processing	Add... Remove Move Up Move Down
JKE COBOL compilation	
JKE COBOL compilation and link-edit	
JKE COBOL compilation (CICS) and link-edit	
JKE COBOL compilation (CICS&DB2) and link-edit	

Use an existing build file

Specify a custom build file and the targets to be invoked. Properties can be referenced using \${propertyName}.

Build file:\*

Build targets:

Trust build outputs

Choose to build all programs or a custom subset of buildable artifacts.

Build workspace

Build subset

Browse...

Build changed items only



# Enterprise Platform Capabilities – Impact Analysis

The screenshot illustrates the process of performing an impact analysis in an IDE. A context menu is shown over the file 'JKECMORT.cbl' in the 'Project Explorer', with the 'Impact Analysis...' option selected. The 'Impact Analysis' dialog box is open, showing the 'Impact Analysis Search' section. The 'Search Type' is set to 'Show files that this file depends on'. The 'Stream' is set to 'Mortgage Development Stream'. The 'Advanced' section has 'Apply search path' checked. The 'Language Definition' is set to 'JKE COBOL compilation (CICS&DB2) and link-ed'. The 'Build Definition' is empty. The 'Finish' button is highlighted. A blue arrow points from the 'Finish' button to the 'Tasks' window, which shows the results of the analysis.

Found 2 files that JKECMORT.cbl potentially depends on. (Logical de

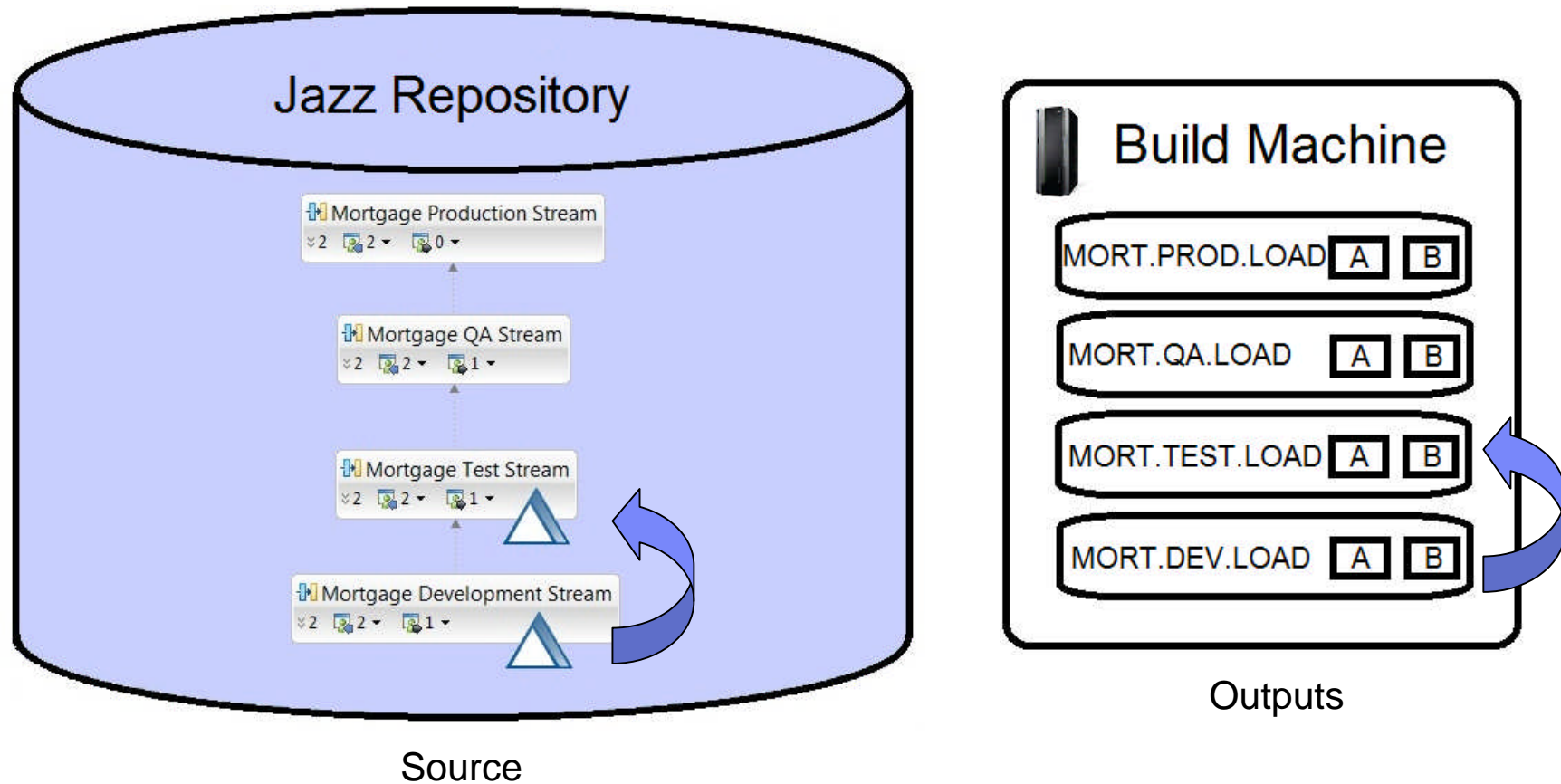
fileName	filePath	componentName
JKENBRPM.cpy	/MortgageAp...	Mortgage Common
JKEMTCOM.cpy	/MortgageAp...	Mortgage Common





## Enterprise Platform Capabilities - Promotion

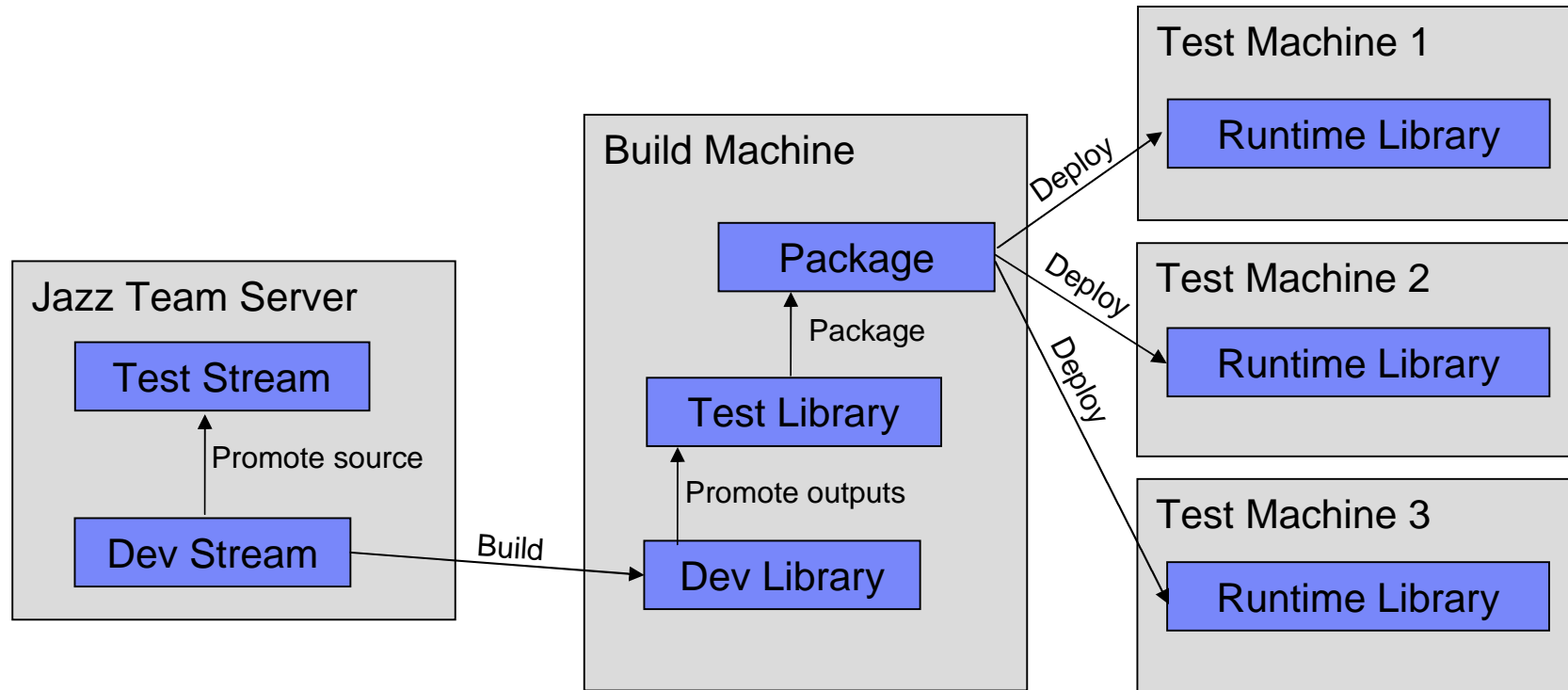
- Flow source code changes and build outputs through the development hierarchy





# Enterprise Platform Capabilities - Deployment

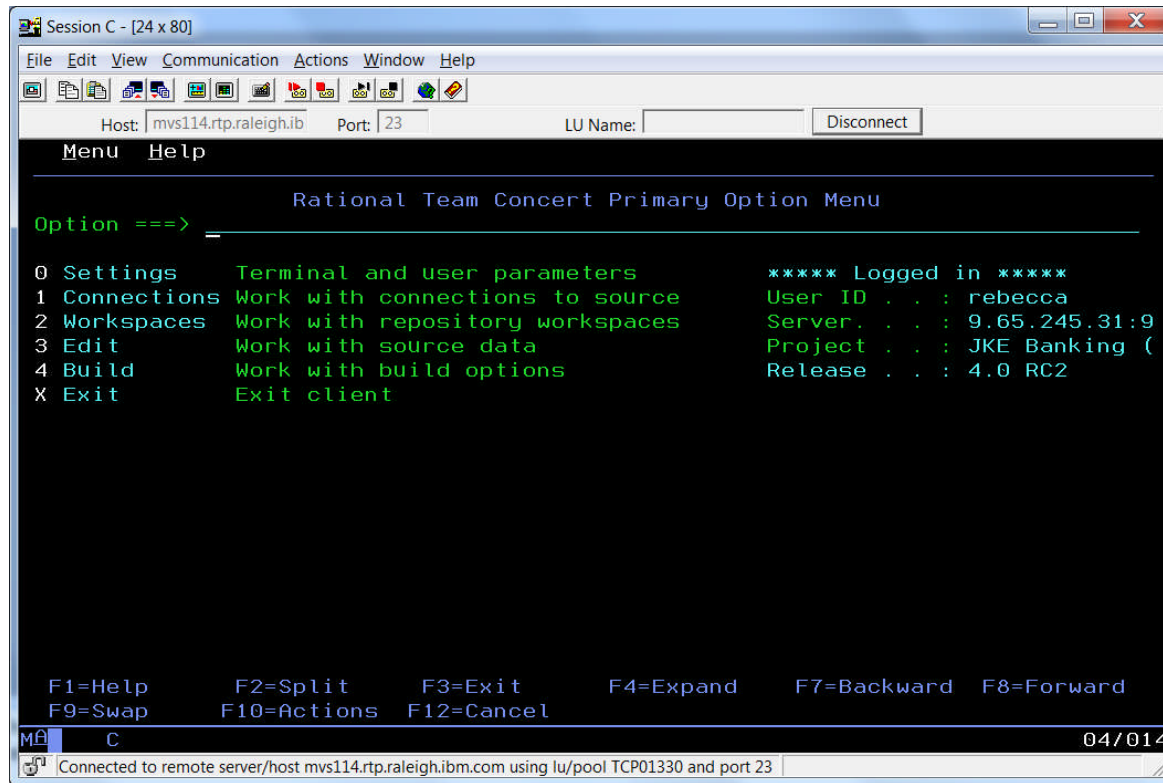
- Package build outputs and deploy to various runtimes





# Enterprise Platform Capabilities - ISPF Client

Developers still want a Green Screen?



- Full function SCM client
- Uses the usual ISPF editor to edit files and follows common ISPF panel standards for all panels and actions
- Designed to be used with the Web client for planning and work items



## PharmaPartners B.V.

### *Boosts productivity with Collaborative Lifecycle Management*

#### The need:

Because of increasing product diversification, complexity and a more demanding market, PharmaPartners B.V. needed to streamline its development process from end to end.

#### The solution:

The IBM Rational Collaborative Lifecycle Management solution provides an integrated application lifecycle solution to capture requirements, create a project plan for a product release broken down into work items assigned to individual developers, and define and manage test plans.

#### The benefits:

- Boosted developer **productivity by up to 12%**
- Gained **accelerated time to market**
- **Achieved full ROI within 12 months** of solution implementation

#### Solution components:

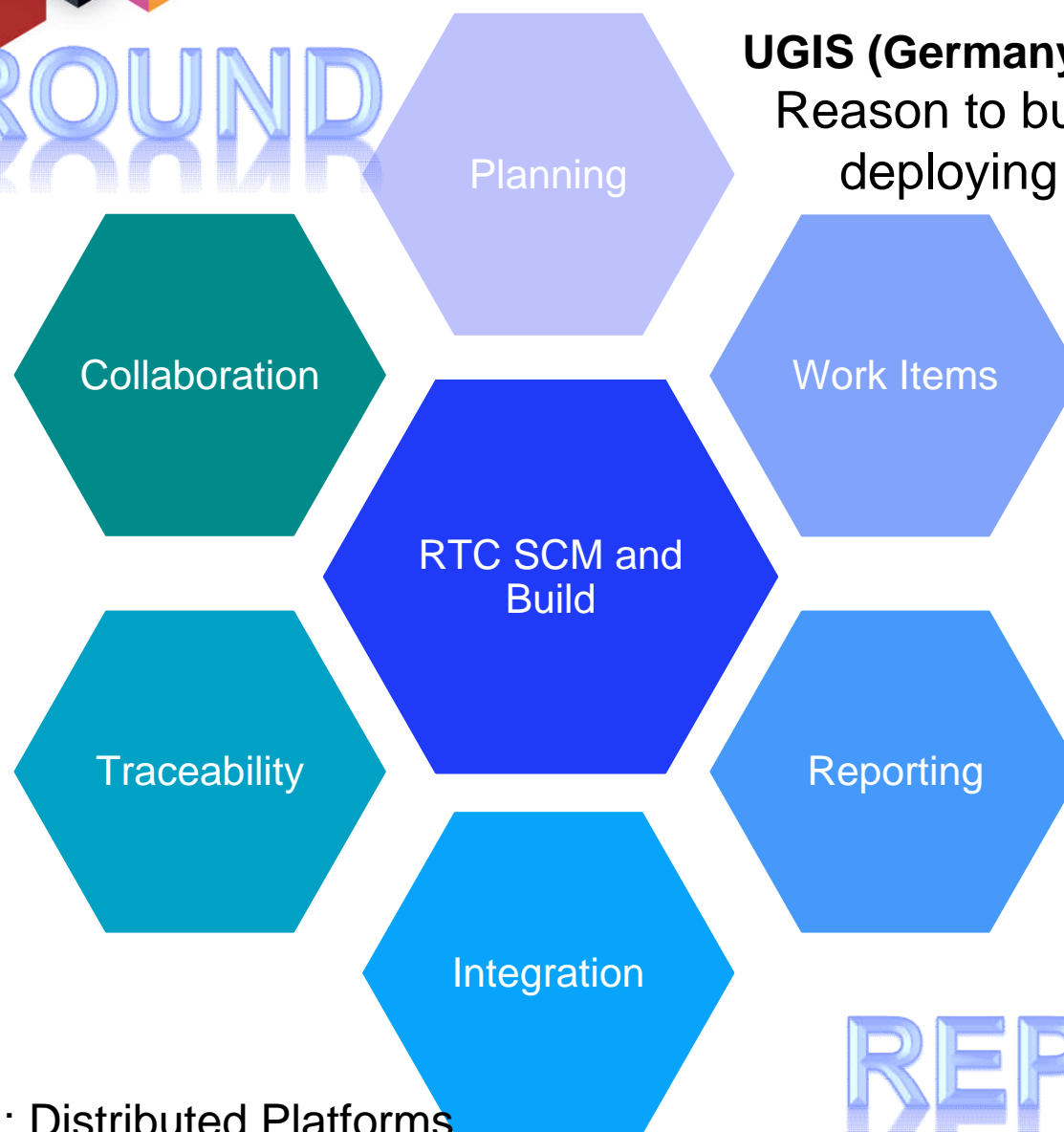
- IBM® Rational® Quality Manager Standard Edition
- IBM Rational Team Concert Standard
- IBM Rational Requirements Composer
- IBM Rational Software Architect
- IBM Software Services: Rational Custom Consulting and Mentoring; Rational Deployment Services
- IBM Business Partner: Synopsys Nederland B.V.



SPP03079-CAEN-00 (March 2011)



# SURROUND



**UGIS (Germany, Austria and Italy)**  
Reason to buy : Cross-platform  
deploying 4000+ developers

## **Fidelity (US)**

Reason to buy : Distributed Platforms  
Ran for >1 year in surround mode

# REPLACE

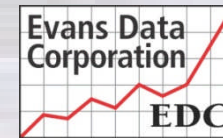


## Developers Rate IBM's Rational Tool Suite as #1

- Users of IBM's Rational tool suite are more satisfied with its features and capabilities than users of any other major software development platform
- Rational was rated #1 in several categories
- Rational has been rated #1 in six of the last seven years

***"IBM has shown significant insight into what developers want and need along with an impressive ability to execute."***

*- Janel Garvin, CEO of Evans Data Corporation*





# IBM Rational is a recognized leader in ALM

## Ovum Decision Matrix: Selecting an ALM Vendor

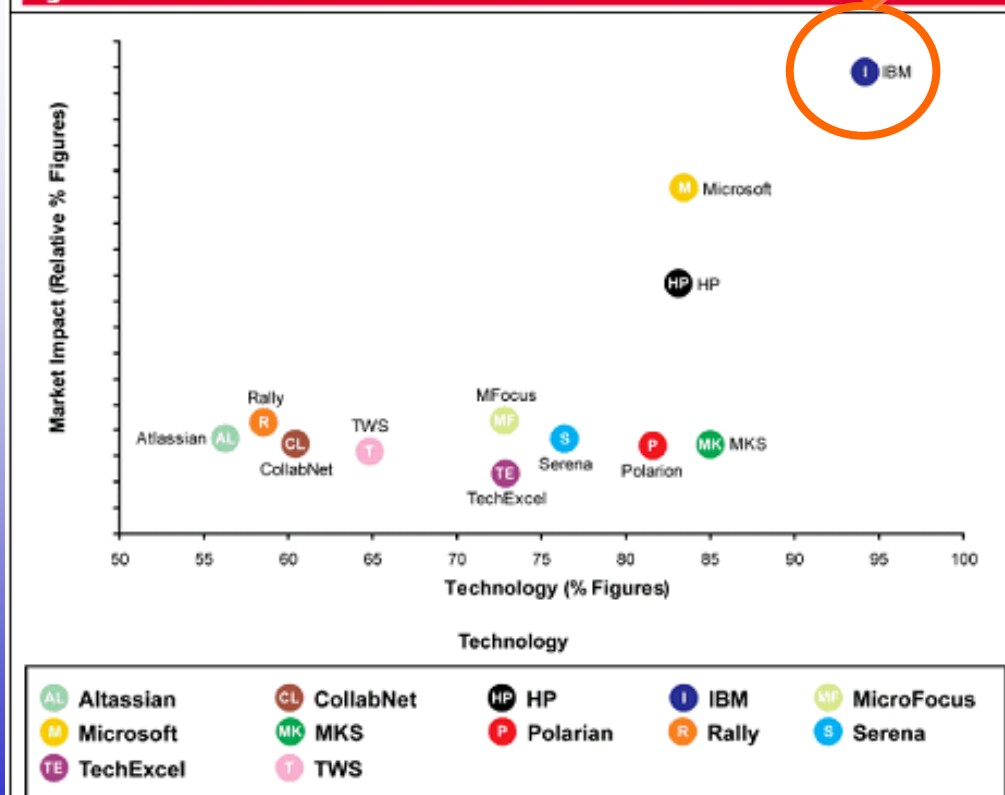
Reference Code: OI00068-002 Publication Date: March 2011

Authors: Chandranshu Singh, Tony Baer, Michael Azoff

### Report Highlights

- "IBM has the broadest and arguably the *deepest portfolio among all vendors profiled in this report.*"
- IBM's Technology Score: **94.3%**
- IBM's Market Impact score: **10/10**
  - The highest score!
  - All other vendors were ranked relative to IBM
- "Furthermore, the vendor has ensured that it stays ahead of the pack by having a *good grasp of market demand and meeting it through tool support.*"

Figure 3: Extended ALM Decision Matrix



Source: Ovum

OVUM

©Ovum published 3/2011 - This report is a licensed product and is not to be photocopied



# Gartner's report examines ALM tool offerings and identifies the trends shaping the emerging marketplace.

## Gartner Market Profile: Application Life Cycle Management (ALM) Tools, 2012

ALM Tools Software Development Life Cycle (SDLC) Discipline Support

### Capabilities Offered by Vendor

Figure 3. ALM Tools SDLC Discipline Support

## Report Highlights

- Full software development life cycle (SDLC) support is essential for a complete ALM solution
- Industry-specific features promote easier ALM adoption
- Collaborative functionality is key to successful ALM productivity

➔ [Link to full report](#)

	Issue Management	Requirements Management	Software Configuration Management	Integration and Build	Environment Provisioning	Release Engineering	Test Case Management	Automated Testing	Manual Testing	Static Code Analysis	Peer Review
Atlassian	+	+	TPI	+	TPI	+	TPI	TPI	+	TPI	+
CollabNet	+	+	+	TPI	+	+	TPI	TPI	TPI	TPI	TPI
Digit	+	+	TPI	TPI	TPI	TPI	+	TPI	+	TPI	+
HP	+	+	TPI	TPI	+	+	+	+	+	+	NA
IBM	+	+	+	+	+	+	+	+	+	+	+
Inflectra	+	+	TPI	TPI	NA	+	+	+	+	NA	NA
Kovair	+	+	TPI	TPI	NA	+	+	TPI	+	TPI	NA
Micro Focus	+	+	+	+	NA	TPI	+	+	+	+	NA
Microsoft	+	+	+	+	+	+	+	+	+	+	TPI
Parasoft	+	+	TPI	TPI	+	TPI	+	+	+	+	+
PTC (MKS)	+	+	+	TPI	TPI	+	+	+	+	TPI	+
Rally Software	+	+	TPI	TPI	NA	TPI	+	TPI	+	NA	NA
Serena Software	+	+	+	+	+	+	+	TPI	TPI	TPI	TPI
SmartBear Software	+	+	TPI	+	NA	+	+	+	+	TPI	+
TechExcel	+	+	+	TPI	NA	TPI	+	TPI	+	NA	NA
ThoughtWorks	+	+	TPI	+	TPI	+	+	+	+	NA	NA
VersionOne	+	+	TPI	TPI	NA	TPI	+	TPI	+	NA	NA

Functionality Legend: + — Has Feature, TPI — Third-Party Integration, NA — Not Currently Available

© 2012 Gartner, Inc. and/or its affiliates. All rights reserved.

Source: Gartner (February 2012)





# The IBM CICS development team simplifies software builds

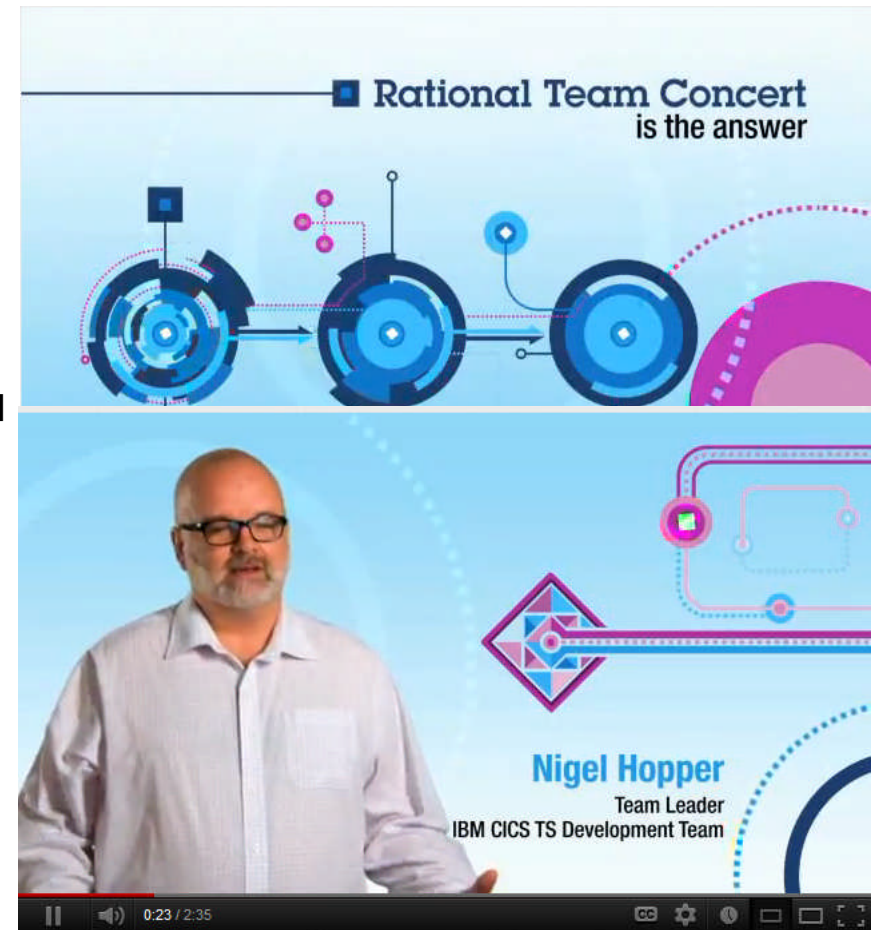
*IBM Rational software helps support agile development & improve collaboration*

**The need:** The IBM® CICS® development team recognized that its product development cycle could benefit by switching from its existing waterfall development processes to agile development methods.

**The solution:** The team used IBM Rational Team Concert™ and IBM Rational® Developer for System z® software to create a highly configurable, end-to-end integrated development environment.

**Value add:**

- Supports greater visibility via integrated work item and reporting tools
- Reduces the amount of preparation required for status meetings by 75 %
- Improves the efficiency of status meetings, decreasing meeting times by 33 %



video on the [Rational You Tube channel](http://bit.ly/QHMbTc) → <http://bit.ly/QHMbTc>






[www.ibm/software/rational](http://www.ibm/software/rational)

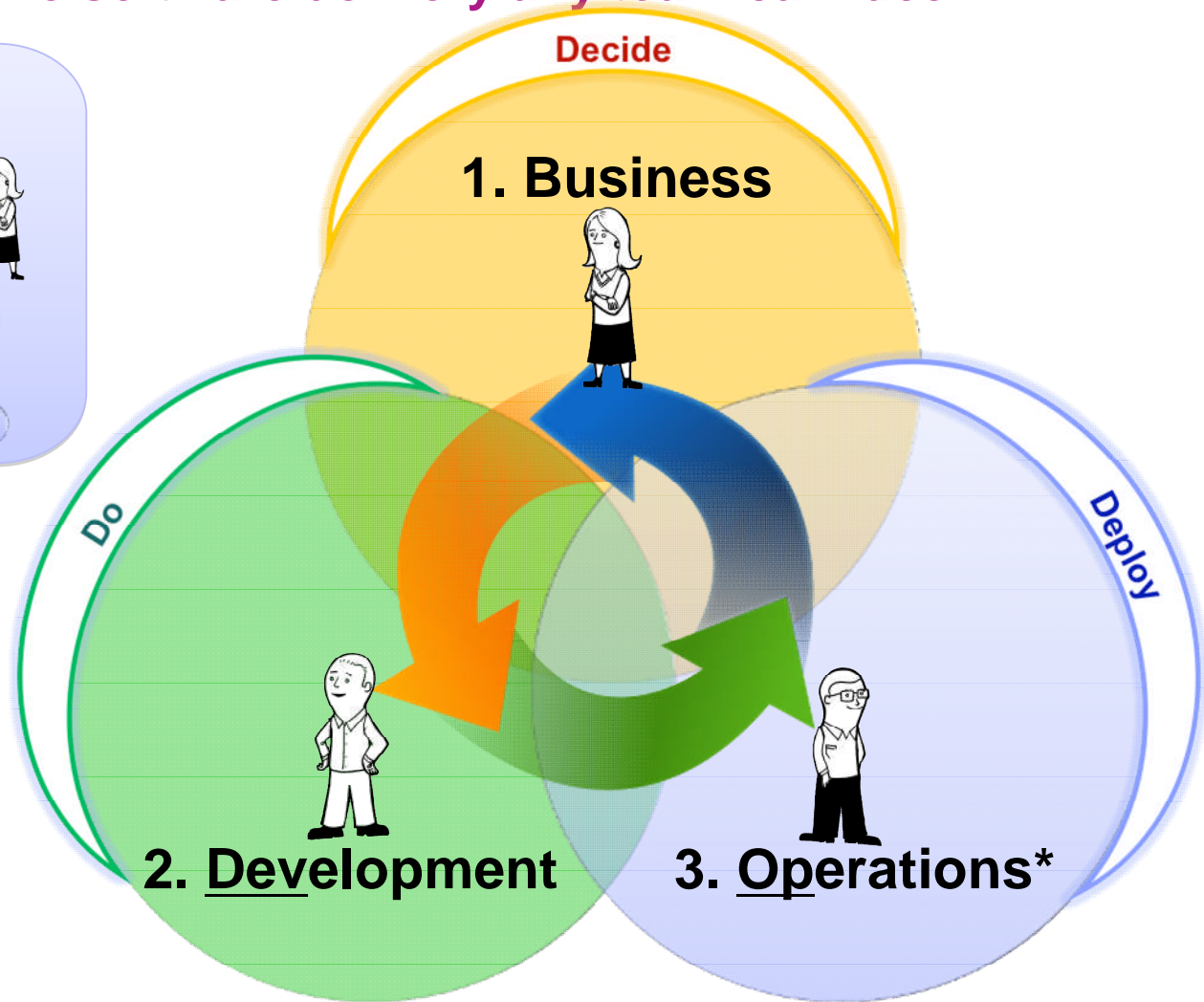

© Copyright IBM Corporation 2012. All rights reserved. The information contained in these materials is provided for informational purposes only, and is provided AS IS without warranty of any kind, express or implied. IBM shall not be responsible for any damages arising out of the use of, or otherwise related to, these materials. Nothing contained in these materials is intended to, nor shall have the effect of, creating any warranties or representations from IBM or its suppliers or licensors, or altering the terms and conditions of the applicable license agreement governing the use of IBM software. References in these materials to IBM products, programs, or services do not imply that they will be available in all countries in which IBM operates. Product release dates and/or capabilities referenced in these materials may change at any time at IBM's sole discretion based on market opportunities or other factors, and are not intended to be a commitment to future product or feature availability in any way. IBM, the IBM logo, Rational, the Rational logo, Telelogic, the Telelogic logo, and other IBM products and services are trademarks of the International Business Machines Corporation, in the United States, other countries or both. Other company, product, or service names may be trademarks or service marks of others.



# Application Lifecycle Management can help break down the barriers to effective software delivery any team can face...

ALM manages the flow of:

- People** 
- Process** 
- Information** 

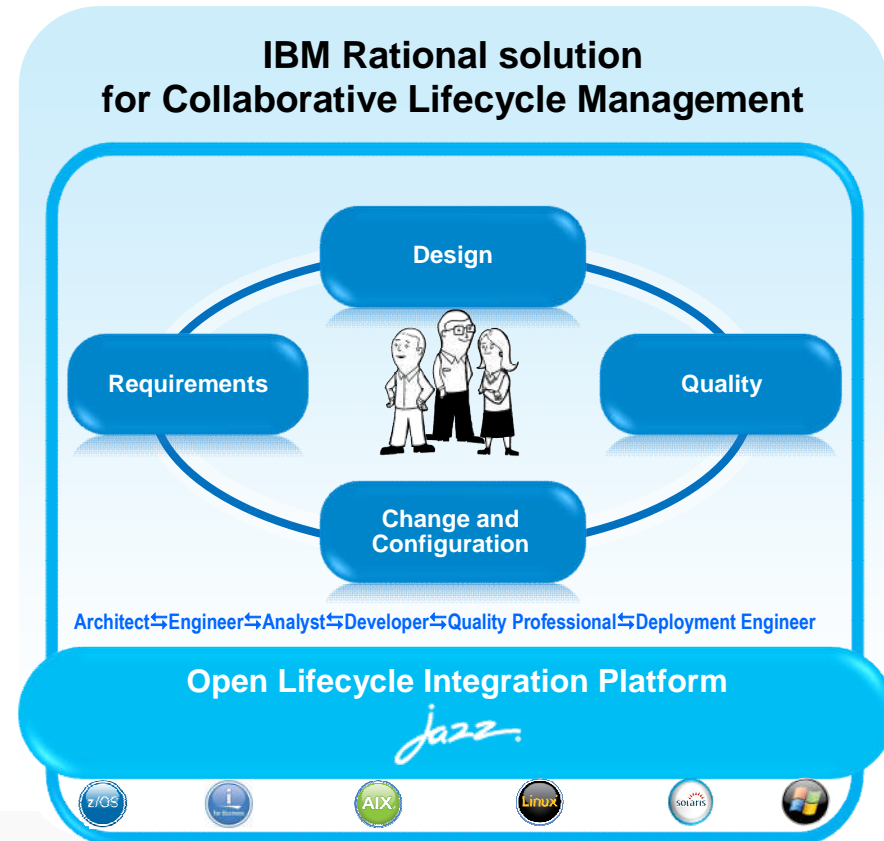




## Integrated and effective Application Lifecycle Management

### Enhanced and expanded for broader focus on the five imperatives for effective ALM

- Centralized administration, evaluation and roll-out capabilities for faster, easier, incremental deployments
- Incremental, flexible upgrade allows each role on a team to upgrade at their own pace
- Integrated software design for broader collaboration and traceability
- Optimized support for Mobile, SAP and IBM WebSphere Application Server



#### NEW

- IBM Solution for Collaborative Lifecycle Management
  - Comprised of Rational Requirements Composer , Rational Team Concert , Rational Quality Manager and Rational Software Architect for design management

***“Once fully implemented, we expect to reduce friction, provide value to customers in each delivery stream, reduce rework by improving end-to-end collaboration and planning consistency, and reduce compliance efforts by automating key process tasks and deliverables.”***

– Stephan Pauletto, Engagement Manager, IMS Health



## ALM Services to support your journey...

### Quick Starts for Common Entry Points

- 
- Requirements Definition
  - Quality Management
  - Collaboration, Planning, Change, Configuration & Build Management

**EXIT**




**Disciplined *Agile* Delivery with Rational Team Concert**

**Planning and Governance with Rational Team Concert**

***Agile* Jump Start Deployment Package**

**Introducing Rational Team Concert Into Legacy Environment Assessment**



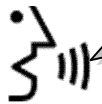
Get up & running quickly!





# ALM Services for continued adoption...

How do I ensure development implements the business needs?



A  
D  
O  
P  
T

**Requirements Definition**

**Collaboration, Planning, Change, Configuration & Build Management**

How do I ensure development is tested by independent test?



A  
D  
O  
P  
T

**Quality Management**

**Collaboration, Planning, Change, Configuration & Build Management**

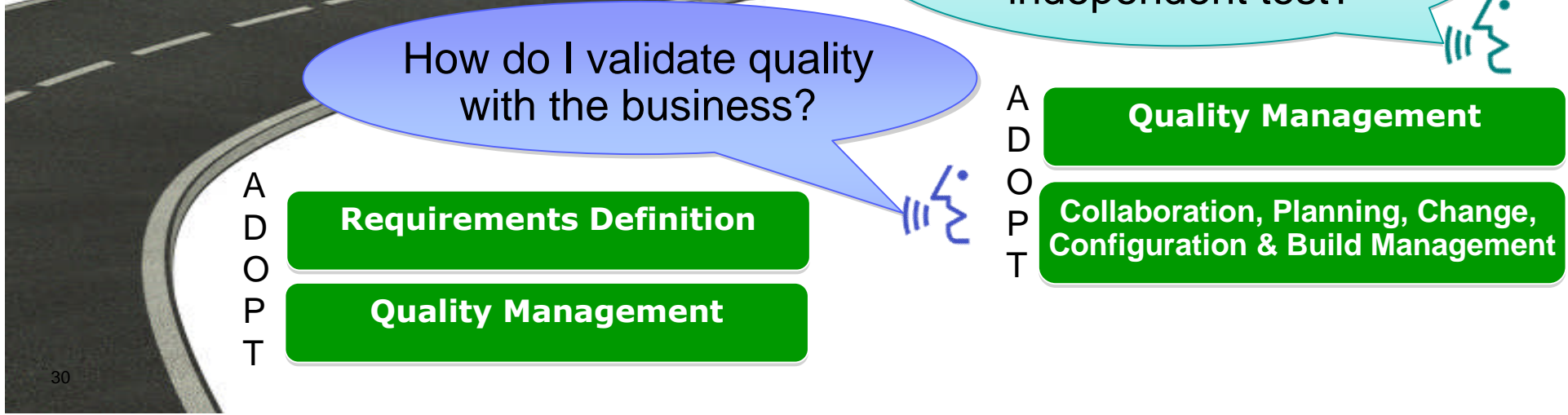
How do I validate quality with the business?



A  
D  
O  
P  
T

**Requirements Definition**

**Quality Management**





## Imperatives help answer questions such as these

Can your team(s)...

...find ***all*** the information related to a specific task?

...***instantly*** see the impact of project changes

...see what requirements we're ***implementing*** in a given release/milestone?

...provide a ***single view*** of project health at multiple levels?

**It's not all or nothing!**

**Tackle the ones causing the greatest pain.**





## Jazz Architecture Overcomes Past Limitations

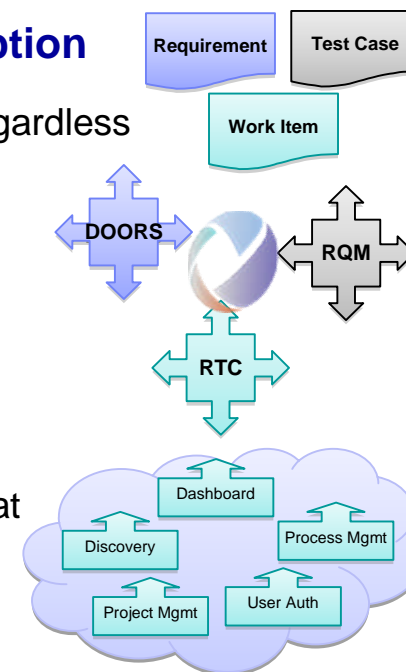
### Open Choice & Rich Integration. Evolutionary & Incremental Adoption

**Everything is a resource!** “I can link any resource to any other resource, regardless of where they live!”

**Standard interfaces** “Each tool can evolve independently without breaking integrations!”

**Domain specific standards for the lifecycle** “Each domain can create standards without having to wait on the others or get the whole industry to agree!”

**Vendor agnostic** “Each vendor can evolve their tool to exploit the services that are valuable to customers like me!”



### Open Services for Lifecycle Collaboration Lifecycle integration inspired by the web

#### What is OSLC?

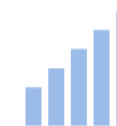
- ▶ Community Driven – @ [open-services.net](http://open-services.net)
- ▶ Specifications for numerous disciplines
  - ▶ Such as, ALM, PLM and DevOps
  - ▶ Defined by scenarios – solution oriented
- ▶ Inspired by Internet architecture
- ▶ A different approach to industry-wide proliferation



Inspired by the web



Free to use and share



Changing the industry

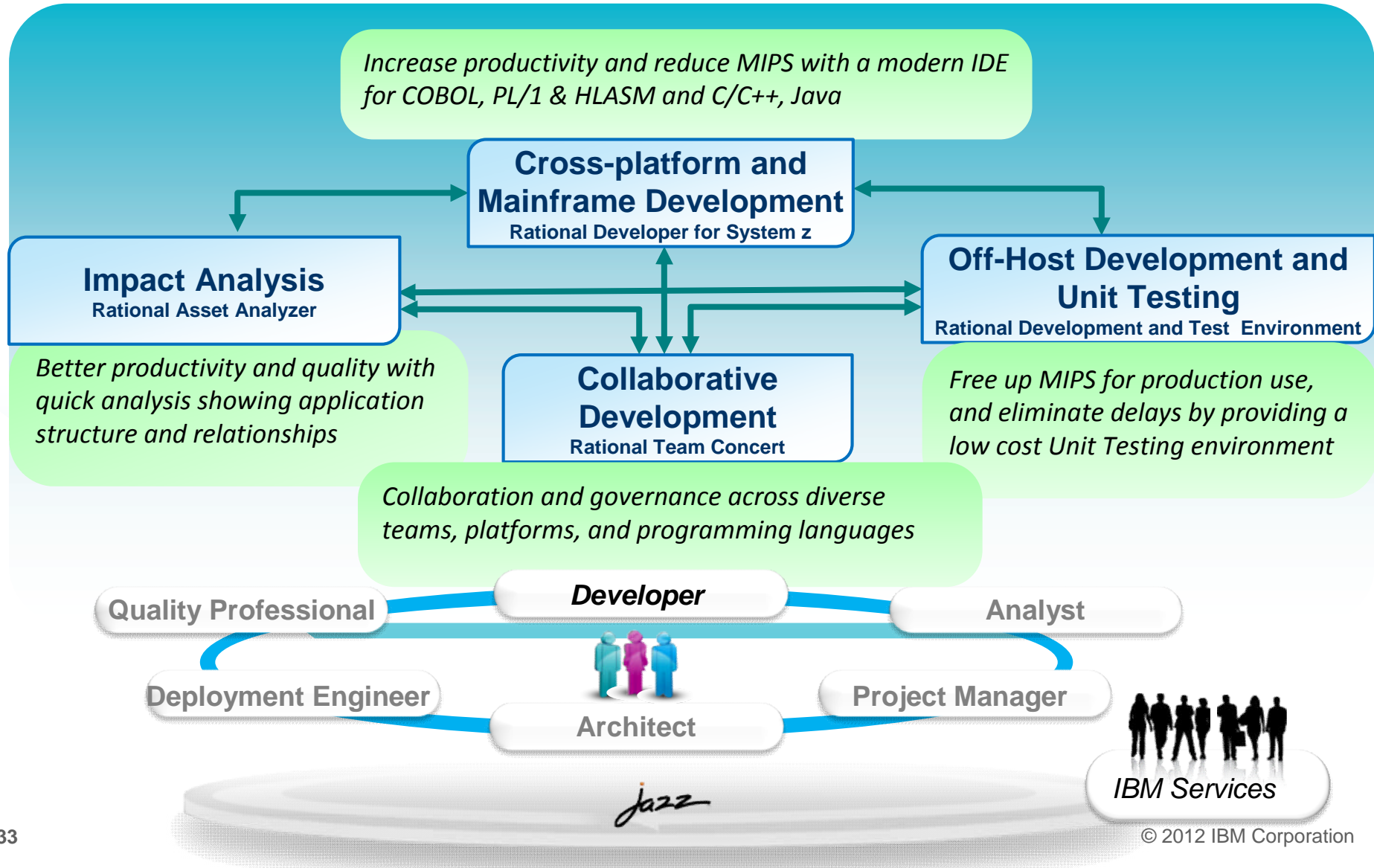


**Get involved & contribute!**



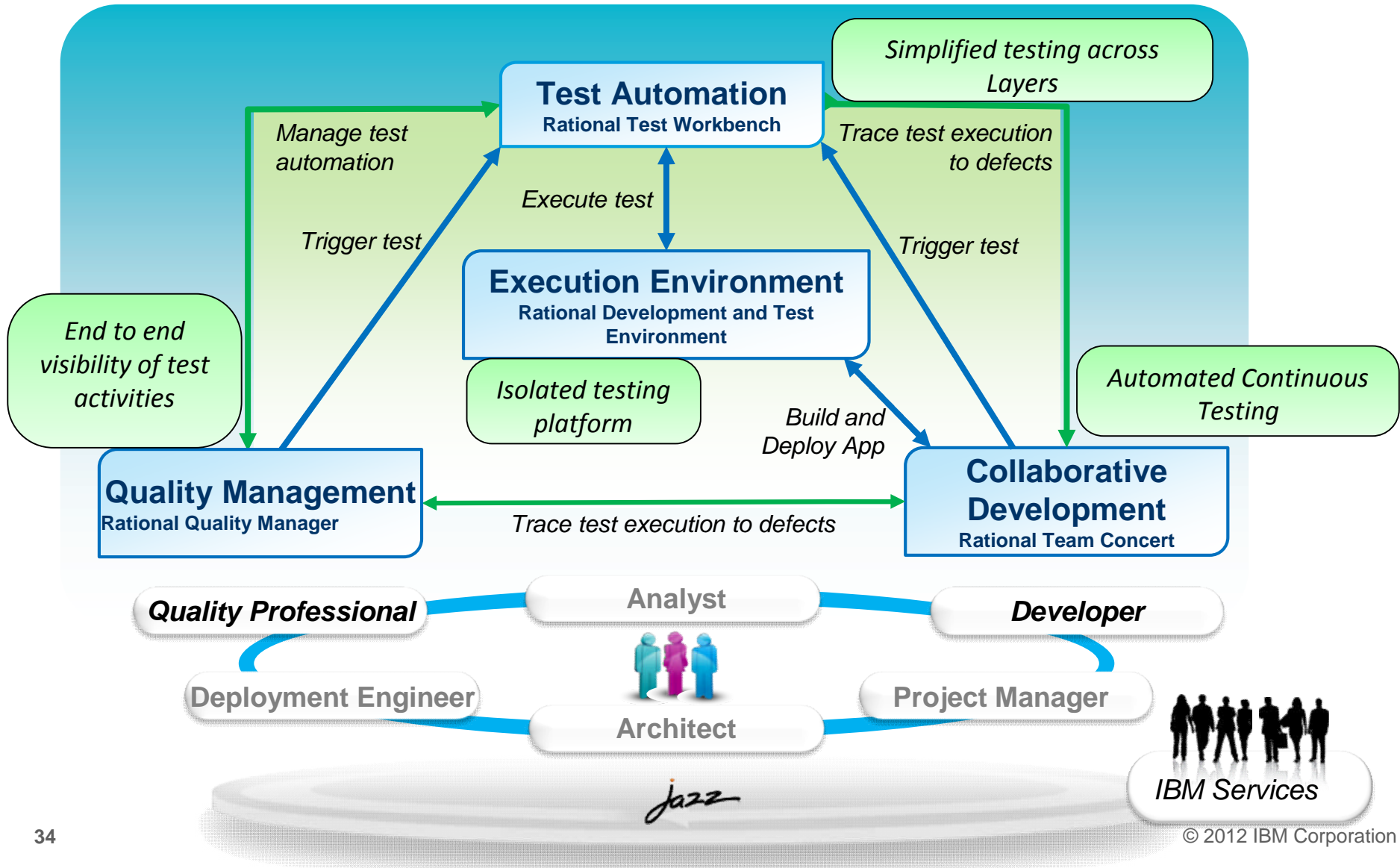


# The IBM Integrated Solution for System z Development





# IBM Continuous Integration Solution for System z





# Flexible and Incremental Adoption\*



Entry Point	Add Capability	Add Capability	Add Capability
<ul style="list-style-type: none"> <li>• Increase developer productivity to reduce maintenance backlog</li> <li>• Quickly modernize System z apps with coding assists and service creation and refactoring wizards</li> <li>• Improve code quality with code review, automated UT, and code coverage</li> </ul>	<ul style="list-style-type: none"> <li>• More rapid, flexible developer testing</li> <li>• Reduce development MIPS</li> </ul>	<ul style="list-style-type: none"> <li>• Reduce delivery time by understanding the impact of change, upfront</li> <li>• Shortened learning curve for new team members</li> </ul>	<ul style="list-style-type: none"> <li>• Unified status, change management, process, and SCM across tools, teams, and platforms</li> <li>• Reduce risks and meet audit and compliance mandates with automated process enforcement</li> <li>• Reduce the cost of System z SCM</li> </ul>
<p style="text-align: center;"><b>RDz</b></p> <p>Modern IDE for applications that include System z components</p>	<p style="text-align: center;"><b>RD&amp;T</b></p> <p>Add z/OS development and unit test environment on an z86 Linux Server</p>	<p style="text-align: center;"><b>RAA</b></p> <p>Add rapid application understanding</p>	<p style="text-align: center;"><b>RTC</b></p> <p>Add collaboration and governance across diverse teams, platforms, and programming languages</p>

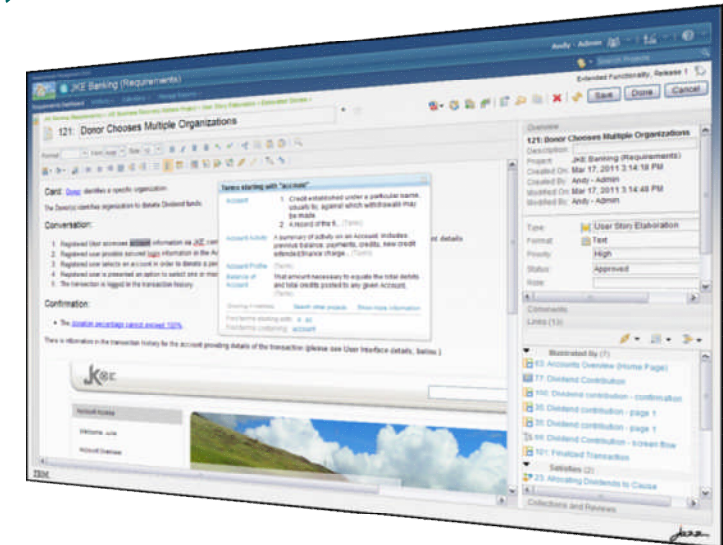
\*Elements of the solution may be adopted any order based on your needs



# CLM 2012

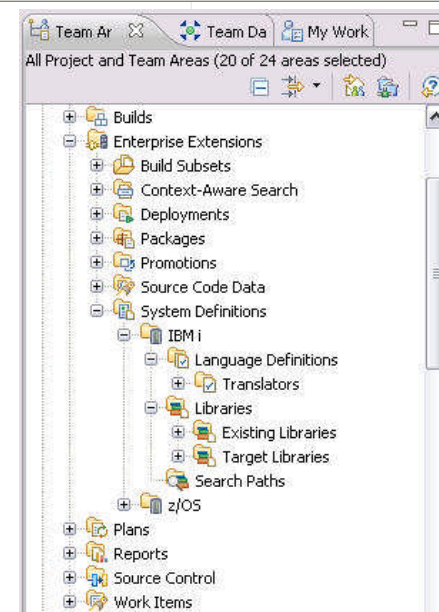
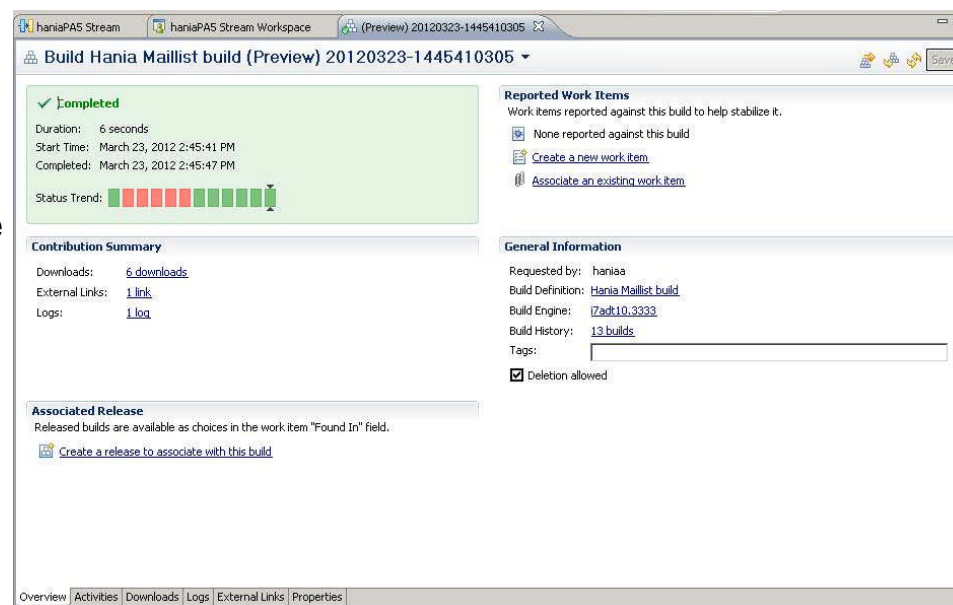


- CLM High Availability / Clustering on WAS**
  - Enable WAS based High Availability via Clustering
- Support Rolling Upgrade capability (N-1) for CLM**
  - Upgrade one CLM application at a time (rather than having to do all at once)
    - Allow RTC, RQM, RRC to upgrade incrementally
- CLM / JTS Server Rename**
  - Support server URL rename
    - Use Case:
      - Clone a repository from production to
- Cross Repository Process Inheritance**
  - Share a project's process template across multiple servers



# Team Concert 4.0

- Load with Dependencies
  - Selective load in the eclipse client for performance and ease-of-use
- Dependency build enhancements
  - Build preview
  - Build subsets populated by Work Items
  - Post build report
- Enhanced support for IBM i
  - Full Dependency build with link support
  - Work Item based Promotion and Deployment
- ISPF Client enhancements
  - Enhanced conflict resolution with Compare/Merge
  - Selective loading with dependencies
  - Search and load selected files



```

Load Component List Actions

Component Mortgage App Component

Load Component Action
= 1. Select zComponent projects
  2. Search for zFile/member
  3. Load all component's files

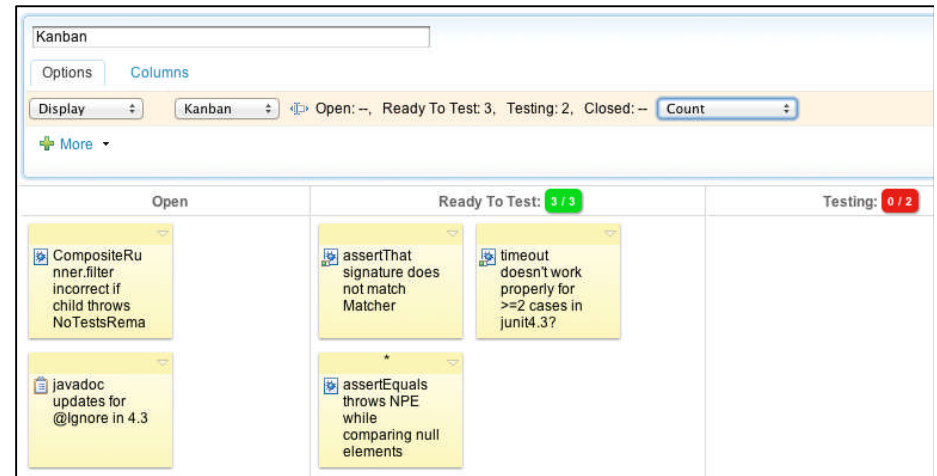
Select a choice and press ENTER to process action.

F1=Help      F2=Split    F3=Exit     F7=Backward F8=Forward
F9=Swap      F12=Cancel
    
```



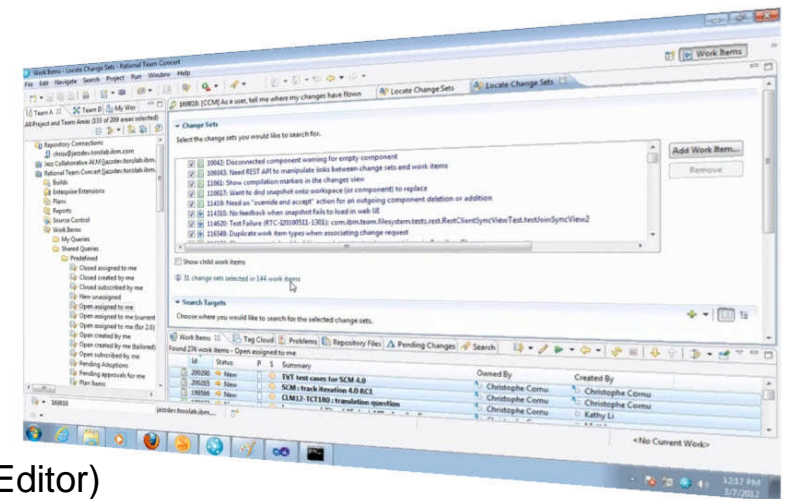
■ **Planning Enhancements**

- **Planning Across Multiple Projects**
- Kanban Taskboard
- Improved MS-Project Import and Re-import



■ **Advanced SCM**

- **Deletion and Artifact Level Read Permissions**
  - Provide read permissions at the versioned artifact granularity in SCM
  - Permanently delete files
- **More Flexible Workspace and Load Management:**
  - Check-in History to easily revert to any checked-in version
  - Save and Re-load load rules from files
- **Variant Management:**
  - Where have my changes flown? (Locate Change Sets Editor)



# Team Concert 4.0

- Enterprise Work Item Enhancements
  - Variables in Work Item Queries
  - External Data Set Providers (HTTP)
  - Flexible Access Control Groups for Work Item Read Permissions
  
- Simple SCM UI
  - Windows 7 Explorer SCM integration
- Built-In Hudson/Jenkins Build Integration
  - View build health and control builds from RTC
- MSCCI Support – Basic versioning API
  - Tested with Rhapsody and Matlab
- CLI Scripting and New Commands
  - Improved SCM command line scripting
  - Many new SCM CLI commands

