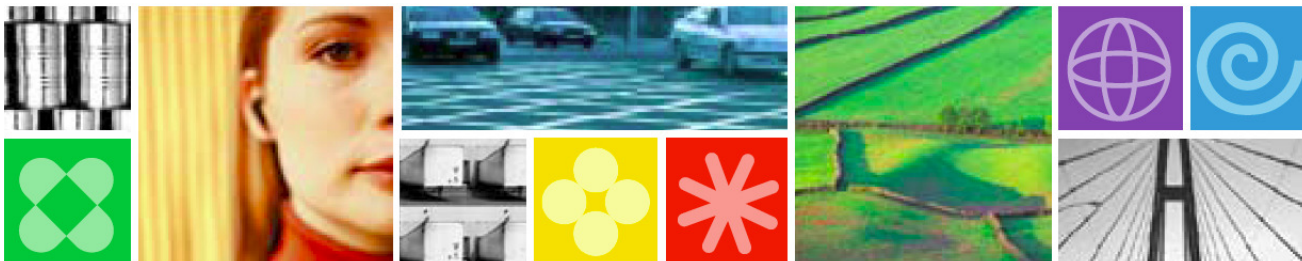




Security in a Distributed Environment

The role of the Mainframe

Jim Porell
IBM Distinguished Engineer
IBM System z Business Development





Cross Domain Risks

- LAN and Network Security
- **Secure Sign in**
- **Cross Domain Authentication**
- **Self Signed Certificates**
- **Certificate Management**
- **Data privacy**
 - Developers
 - PII data
- **Abhorrent behavior**
- **Insider Theft**
- **Forensics**
- **Prevention**

☐ Transaction processing

- Point of sale
- Claims processing
- Credit/Debit/Transfer
- Working off an operational data store (ODS)

☐ Data Mining/Data warehouse

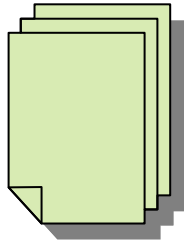
- Batch operations – many times not on the operational data store
- Looking for new business opportunities

☐ Operational Risk (OR)

- Leverages the data base
- Originally, it was also using a copy of the ODS for detection purposes
 - After 9/11, this proved to be inefficient. Fraud occurs during the batch window
- Now OR is more preventative, so it must work off of real time data
 - Additions to any OR database must also be considered in real time vs batch



Security on System z: Reducing risk for the Enterprise



Basic Insurance Policy
\$100,000 Liability

Basic Security: System z
RACF



Rider: Excess replacement for valuable items

Data Encryption services
Enterprise Key mgt



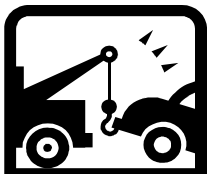
Rider: Excess medical coverage

Identity Management



Rider: Unlimited vehicle towing

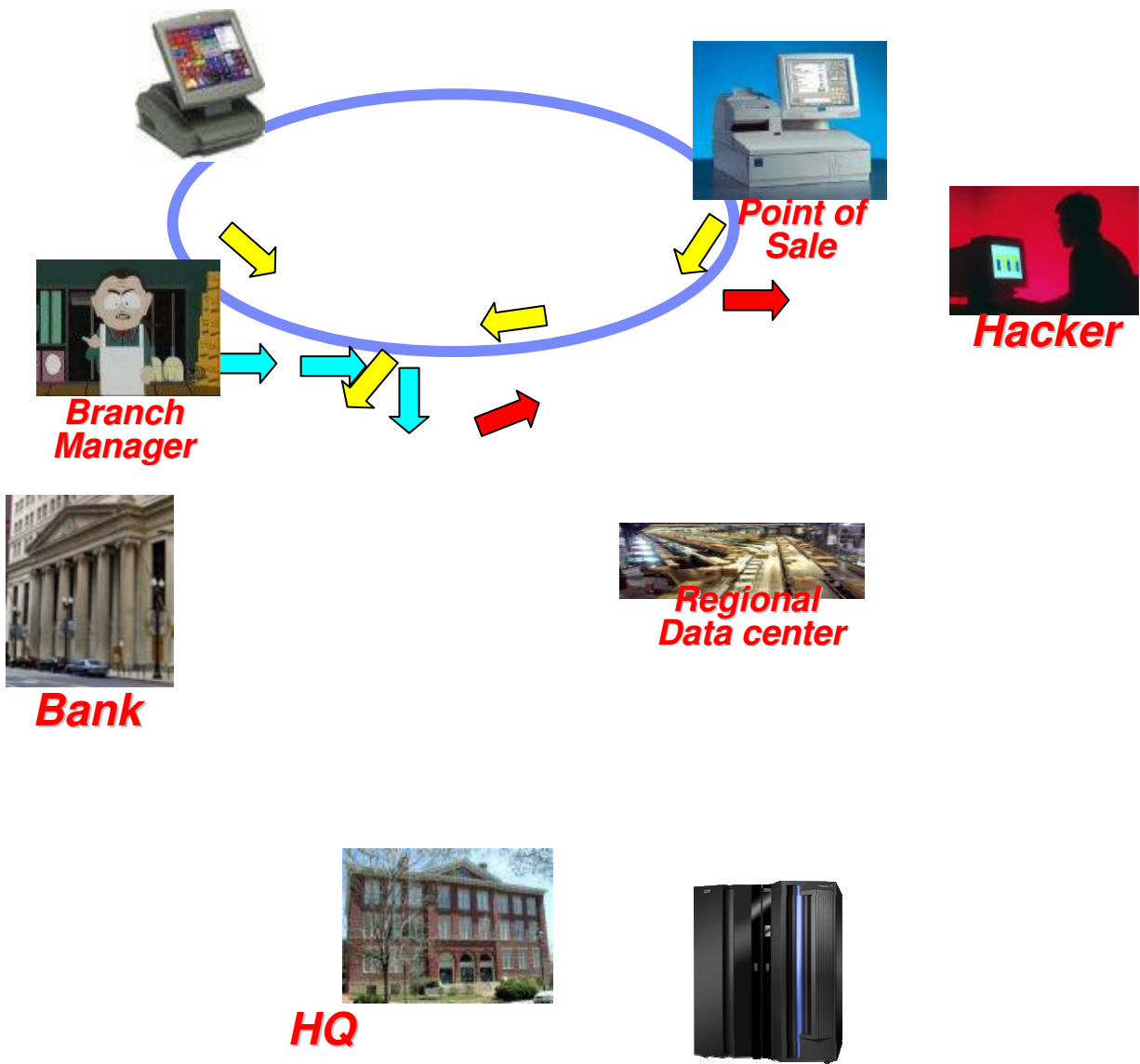
Compliance Reporting



Rider: Excess liability insurance \$3,000,000

Fraud Prevention,
Forensics and Analytics





ERROR: stackunderflow
OFFENDING COMMAND: ~

STACK: