



CICS Transaction Server

CICS TS and Event Processing

I ♥ CICS Business Events

Paul Kettley
Nick Garrod

Today's hosts

- **Nick Garrod** - WorldWide Market Manager CICS Transaction Server



- **Paul Kettley** - CICS Transaction Server Planning and Strategy Manager



Agenda

- **Introduction to Events**

- **CICS TS V3**
 - Overview of CICS Events feeding WBE. Supportpac CB11
 - A short marketing demo

- **CICS TS V4**
 - How CICS TS supports business events
 - Events for CICS
 - Event adaptors
 - Event specifications

- **Some usage scenarios**

What is an event?

- **An event is**
 - Something that happens (or doesn't happen)
 - A business event is
 - Something that happens (or doesn't happen) that is relevant to the business
 - An event has a name and usually some data (its payload)
- **Events emitted and responded to asynchronously**
- **“simple” event**
 - atomic event, meaningful in itself
 - e.g. order placement, stock trade
- **“complex event processing”**
 - detect and respond to patterns of events
 - e.g. 3 orders from customer A in 2 days, suspicious pattern of stock trades)
- **“business event processing”**
 - extends complex event processing capabilities to business users

Why now?

- **Event processing is not new**
 - Systems management and monitoring
 - Pub/sub messaging systems
- **The business value of event processing is**
 - decreased latency in
 - Obtaining insights
 - Making decisions based on those insights
 - Executing the decisions
- **Multiple business factors have accelerated event processing requirements:**
 - Compliance with regulations, on-line
 - Demand for cost reduction, leading to more automation
 - Technology developments such as RFID
 - Desire for greater awareness of business behavior through Business Activity Management, Business Performance Management

The gap between LOB and IT limits agility, flexibility and responsiveness

**Business users
know which
event patterns
are relevant and
what actions are
required, but
aren't equipped
to implement
themselves**



Business User



**IT people *may*
have event-
based tools and
technologies but
can't respond
quickly enough
to changing
business
requirements**



Business Event Processing Bridges the Gap

Puts power in the hands of the business user

- No coding required for defining business event patterns
- Tasks performed via tooling



Business User



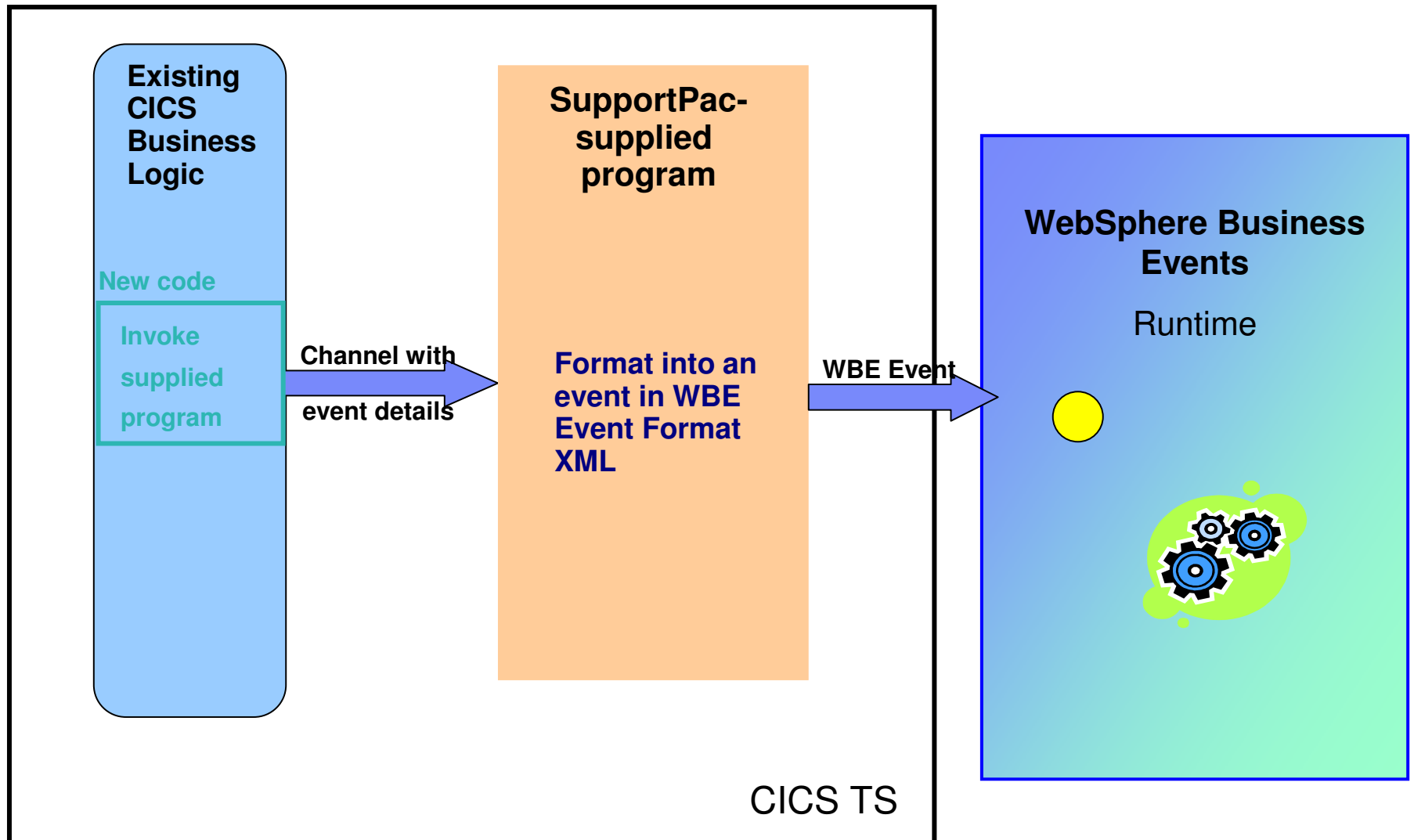
Provides unique convergence of power, flexibility, and ease of use

- IT configures endpoints and payloads
- Leverages SOA infrastructure



CICS TS V3

CICS Events SupportPac (CB11)

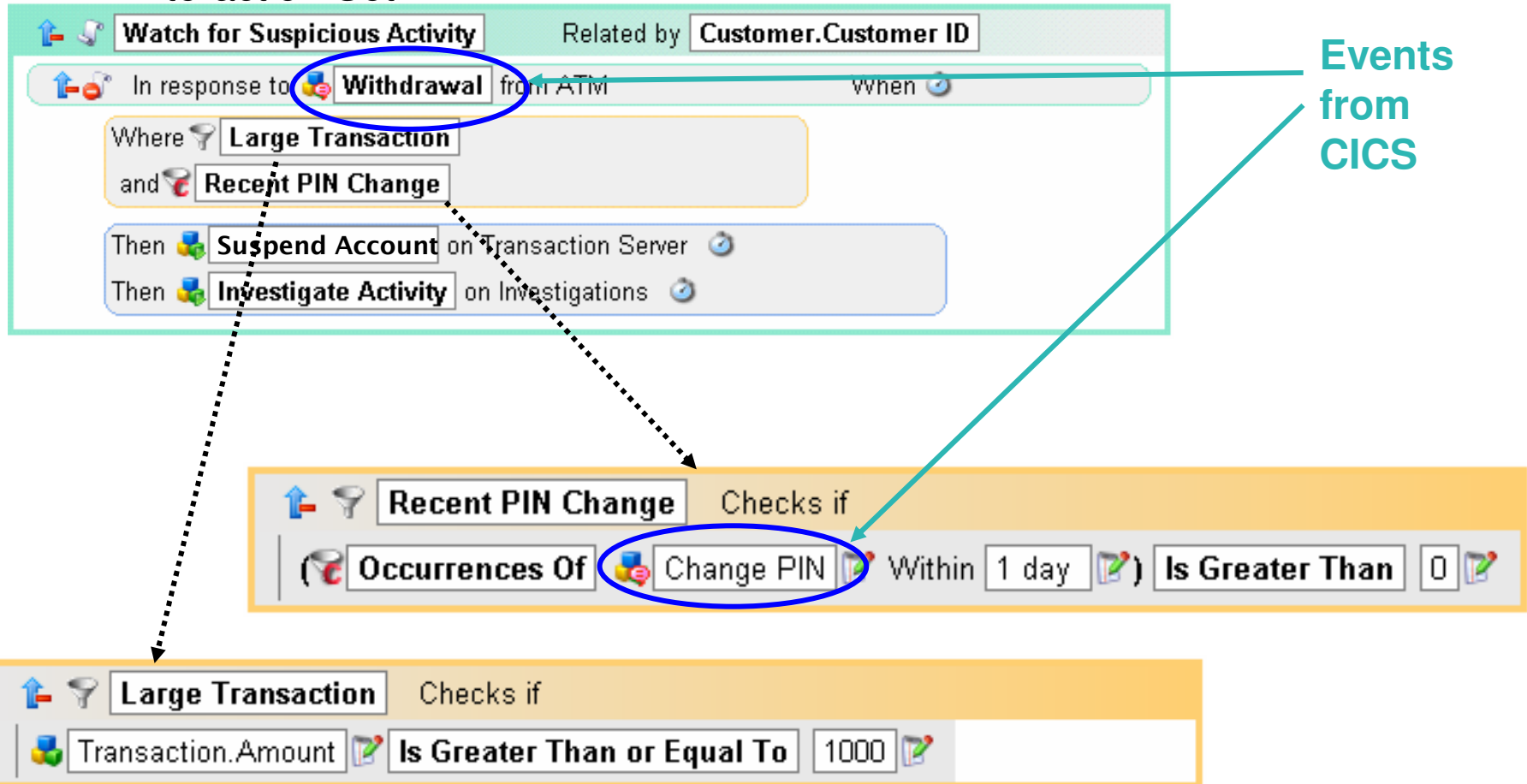


CICS Events SupportPac

- CB11 provides a taster of CICS acting as a source of events to WBE
- The SupportPac runs on CICS TS V3, available 12/12/08.
- It requires a small change to existing CICS application code.
 - Invoke the program supplied by the SupportPac, passing event details in a channel
- The SupportPac formats the event information into XML conforming to WBE format and emit the event for consumption by WBE (or other consumer program) via the WebSphere MQ transport
- WBE can include the event in interaction blocks to carry out pattern matching etc.

Scenario: CICS events with WBE – 1

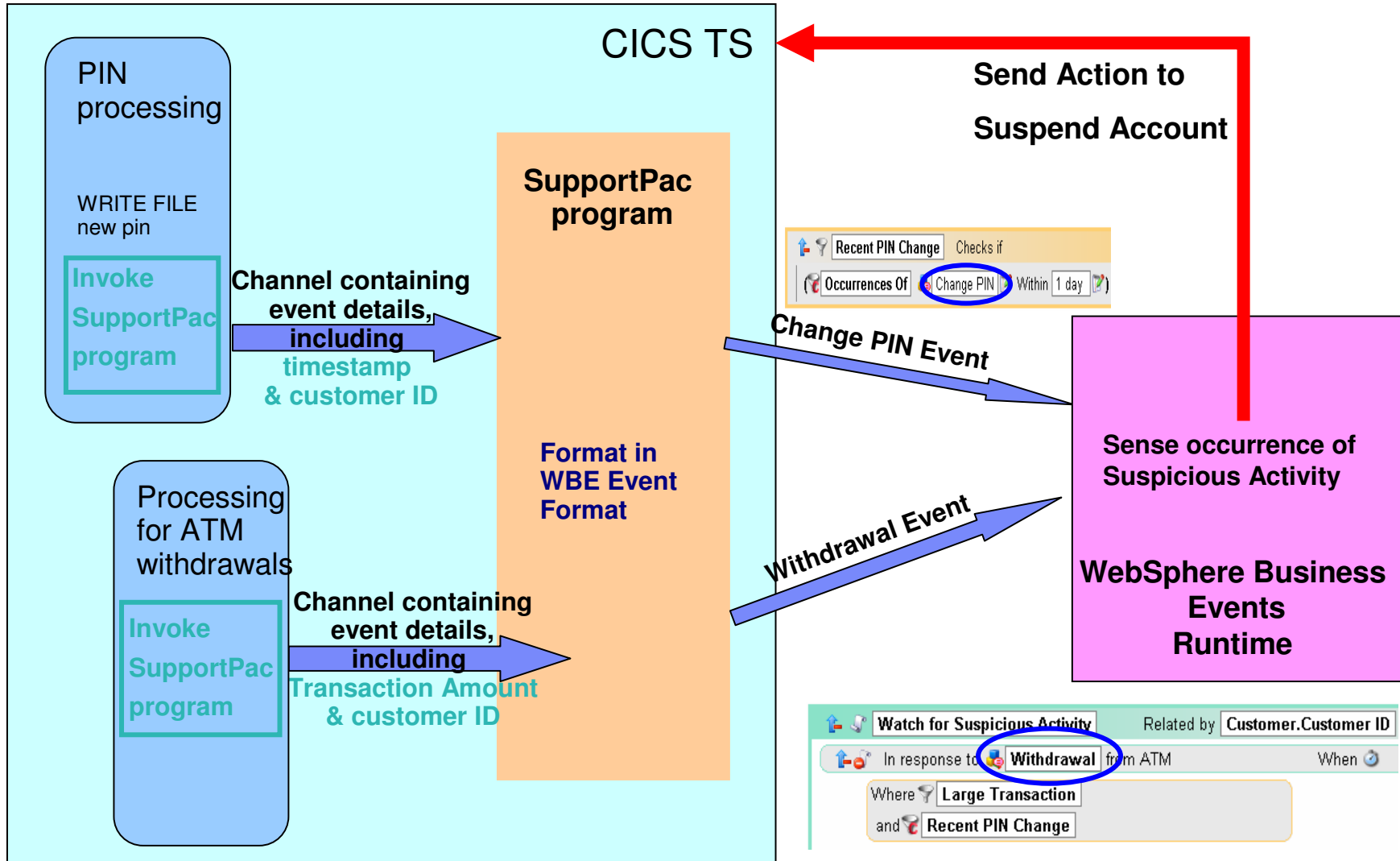
WBE Interaction Set



Scenario: CICS events with WBE – 1 – Notes

- Events from CICS can be used in interactions and filters defined in WBE
- The next two slides illustrate this with a scenario.
- The scenario shows an interaction defined using WBE tooling, to Watch for a Suspicious Activity.
- When a Withdrawal event occurs, check whether this is a large transaction (as defined by the Large Transaction filter).
- If it is a large transaction, then also check whether there has been an occurrence of a Change Pin event for this customer recently (within 1 day). If so, this is a Suspicious Activity.
- The WBE Design tool is used to specify the interactions and filters shown on the slide. The interaction set also specifies the actions to be taken if a Suspicious Activity occurs, which are to suspend the account, and then investigate.
- The events being checked for are events that occurred in CICS.

Scenario: CICS TS Events with WBE - 2



Scenario: CICS events with WBE – 2 – Notes

- The SupportPac will allow events occurring in CICS and specified in WBE interaction sets to be processed by WBE.
- In this scenario, CICS carries out PIN processing and processing of withdrawals from ATMs, and the SupportPac has been installed.
- Where the PIN processing transaction writes a new PIN to a CICS file, code is added to invoke the SupportPac program, passing information about the customer making the PIN change and the time it occurred.
- The SupportPac program causes a 'Change PIN' event to be emitted to WBE.
- When the program which processes ATM withdrawals is run, code is added to invoke the SupportPac program, passing information about the withdrawal transaction and the customer making the withdrawal.
- The SupportPac causes a 'Withdrawal' event to be emitted to WBE.
- The occurrence of the Withdrawal event causes WBE to check for a recent PIN change made by the same customer, and if found this triggers an occurrence of the Suspicious Activity.
- The first action associated with a Suspicious Activity is to suspend the customer's account pending further investigation. A request is made to CICS (such as a Web Service invocation) to carry out this action.

CICS events and WBE

- **CICS Events SupportPac – summary**

- Introduce the concept of CICS as an emitter of events for consumption by WBE
- Start identifying the event points in CICS applications, and how to harness the power of WBE to derive additional information from patterns of these events
- Will run in CICS TS V3, and require application change to emit events by LINKing to SupportPac code using channels and containers interface

- **The demo** 

CICS TS V4

Agenda

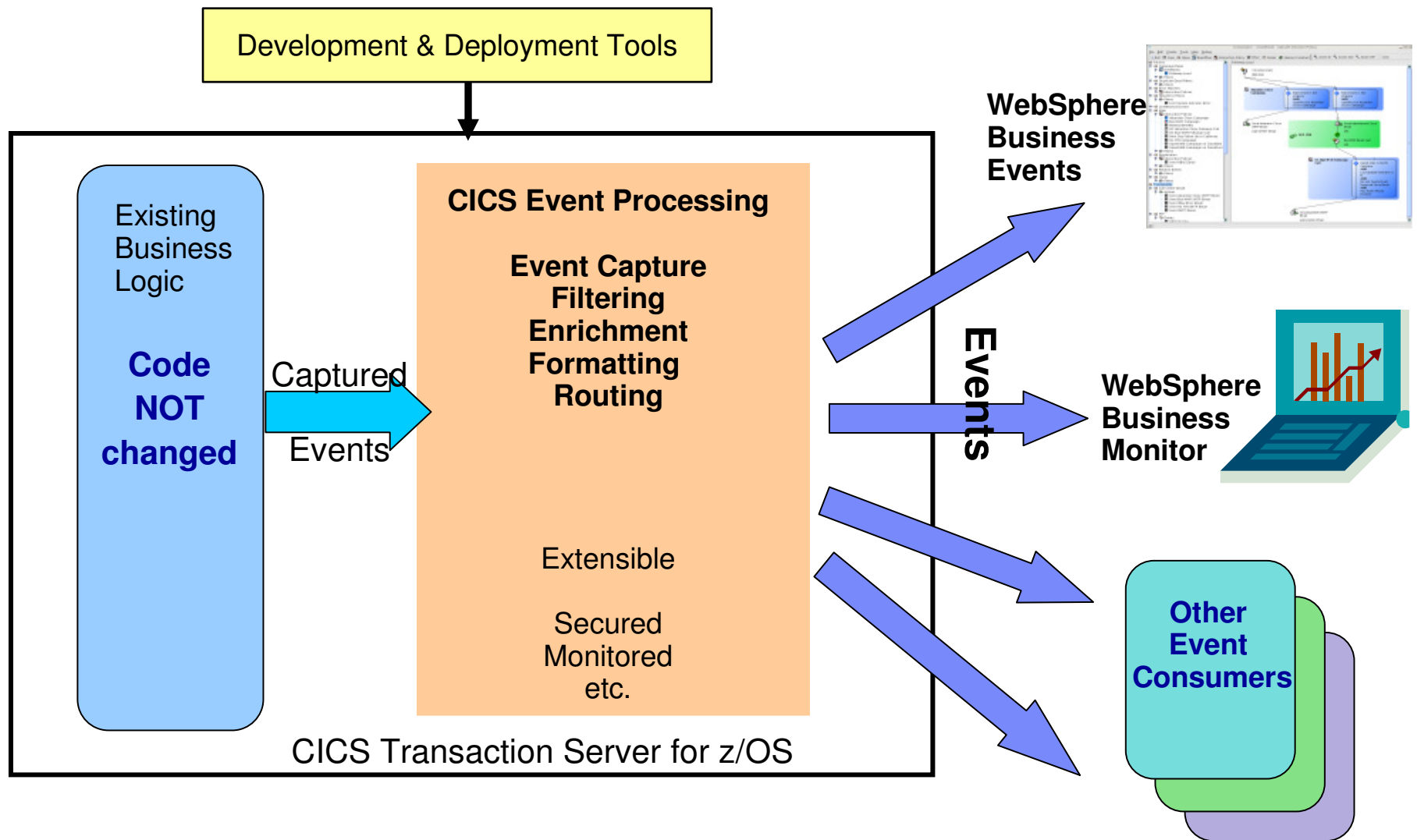
- Introduction to Events

- CICS TS V3
 - Overview of CICS Events feeding WBE. Supportpac CB11
 - A short marketing demo

- **CICS TS V4**
 - How CICS TS supports business events
 - Events for CICS
 - Event adaptors
 - Event specifications

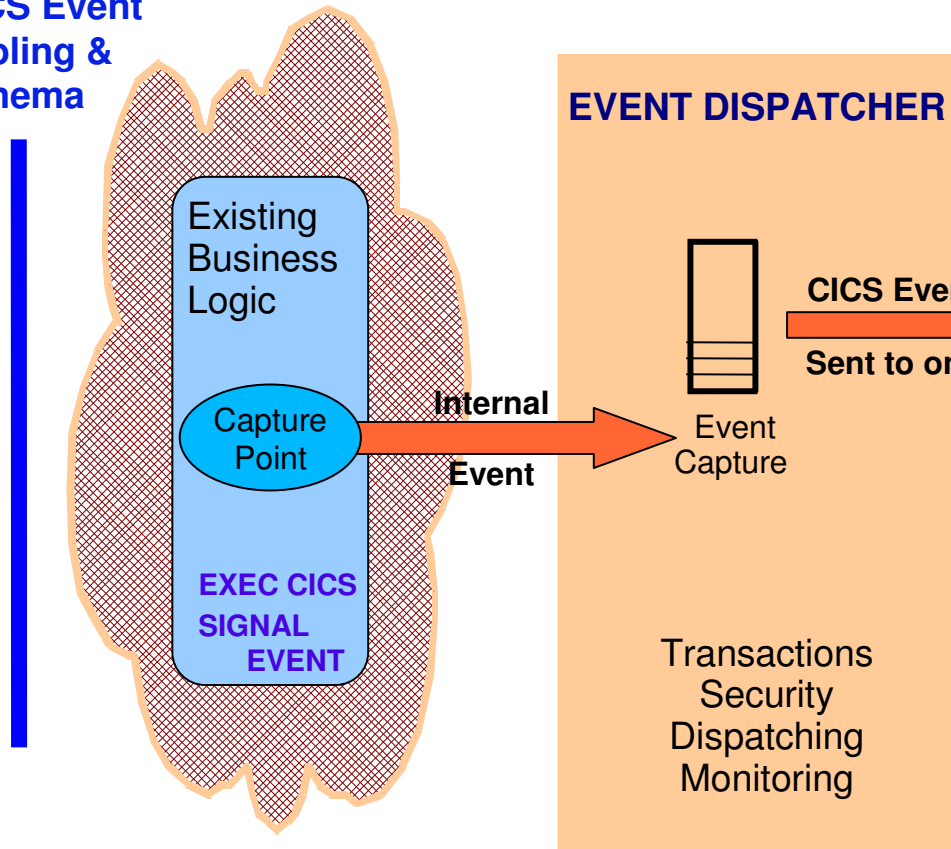
- Some usage scenarios

CICS TS V4.1 and event processing - overview

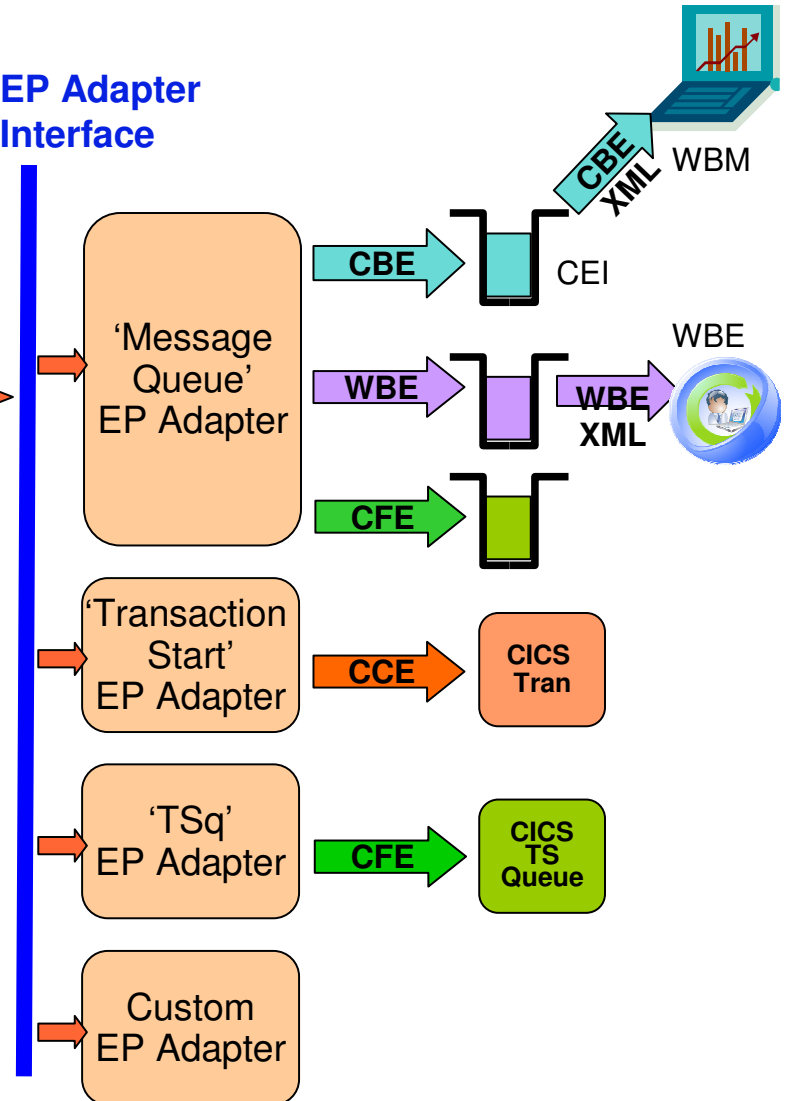


CICS Event Processing Adapters

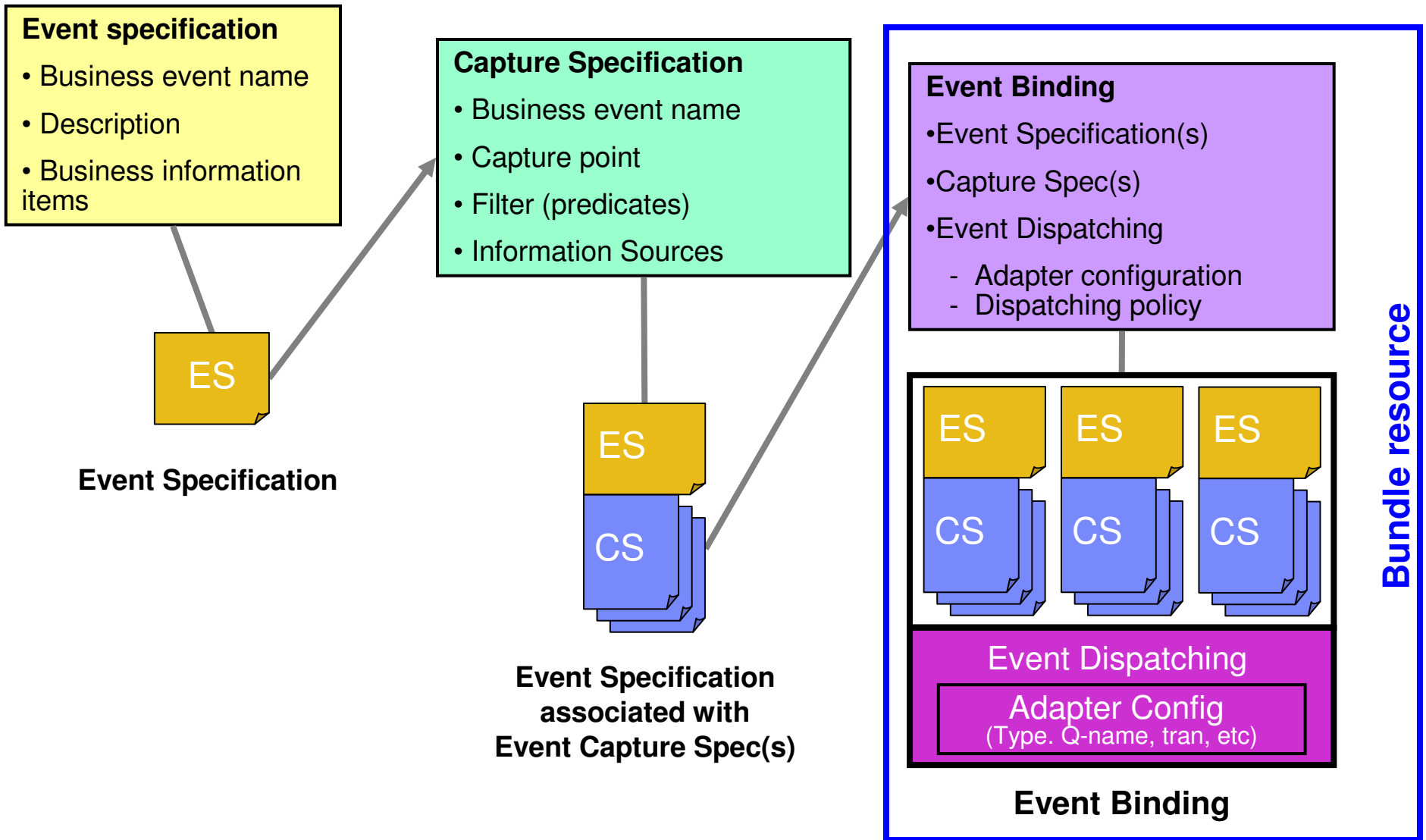
CICS Event Tooling & Schema



EP Adapter Interface



CICS Event Specification



CICS Event Specification Example

Event Specification:

Event name: orderOverTenThousandReceived

Event description: whenever an order is processed that is for over 10 thousand, this event is triggered for display on dashboard

Event output spec (business information): customer ID, OrderNumber

Capture Specification:

Before EXEC CICS LINK command

to PROGRAM(OrderDB)

from current_program = OrderUI

where OrderVal > 10K

OrderVal is in the Commarea or channel passed on the LINK

“Mapping” of required data onto data available from application and context ← **Capture Data**

← **Capture Point**

← **Fixed Data Predicate**

← **Context Predicate**

← **Variable Data Predicate**

Note this identifies an EXEC CICS command and some filters, it does not ‘point’ directly at a specific location in the application code, this can be made more or less specific by use of filters predicates

Event Binding:

orderOverTenThousandReceived,

orderFromMajorCustomerReceived, ...

EP Adapter = CICSTransaction

← **can include other events to capture**

← **how events in this Binding are emitted**

What is the event solution for CICS?

- Events can be emitted *without change to existing business logic* by defining existing EXEC CICS calls as candidates to trigger events
- Only occurrences matching predefined conditions will trigger an event:
 - Specified EXEC CICS Command, and/or
 - Specified file/program/service (for example), and/or
 - Correct transaction or program (for example), and/or
- Filter conditions or predicates relating to event data can also control the trigger (for example “account balance must be less than 100 dollars”)
- Once conditions are met, CICS will
 - Capture application data specified for the event payload
 - Apply any policy relating to the event
 - Emit the event through its associated Event Processing Adapter

You define an event with the *Event Binding Editor*, under the CICS Explorer.

You then use the Explorer to deploy the *event bundle* and define it to CICS.

Agenda

- **Introduction to Events**

- **CICS TS V3**
 - Overview of CICS Events feeding WBE. Supportpac CB11
 - A short marketing demo

- **CICS TS V4**
 - How CICS TS supports business events
 - Events for CICS
 - Event adaptors
 - Event specifications

- **Some usage scenarios**

Insurance Scenario - Business Opportunity

- **Customer has obtained insurance quotes for two or more of car, house and belongings insurance**
 - CICS application code which processes insurance quotes could emit an event when a quote is processed, including a customer name or identifier and the type of insurance policy
- **Customer has purchased none or only one of these insurance policies**
 - CICS can emit an event when purchase of an insurance policy is processed, again with customer identifier and policy type
- **WBE can detect this pattern**
 - When quotes for these types of policy received but not all have matching purchase event, or an absence of any matching purchase events (correlated by customer), then take action
- **Send offers to the customer for the other insurance for which quotes were requested**
 - Better targetting than sending offers for all types of insurance available



Banking Scenario - Regulation Compliance



- **Collect events relating to credit and other bank card usage**
- **Check for unusual patterns of behaviour**
 - New card ordered within a week of an address change request
 - Several online purchases where none had been made before
 - 2 or more cash withdrawals in quick succession when withdrawals rare on this card, or normally for smaller amounts
 - etc.
- **Action will usually be to confirm with cardholder that this change is expected**
- **e.g. “Red flag” policy required by US FACT (Fair and Accurate Reporting Credit Transactions) Act to detect potential instances of identity theft**

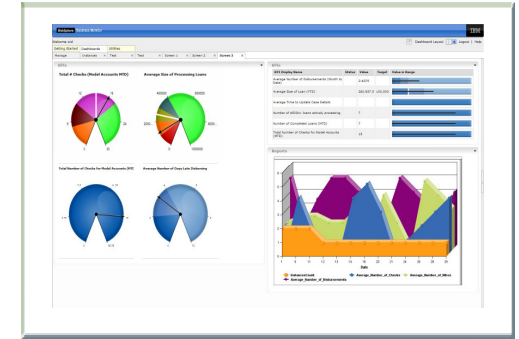
Banking Scenario – Business Opportunity

- **A banking customer talking to a teller requests a product**
- **The system detects the teller inquiry transaction and relates it to customer history**
- **System prompts teller to offer a complementary product based on apparent customer interests**



Order Processing Scenario giving Visibility into Processing

- **Events emitted during order processing**
 - order received
 - order dispatched
 - order cancelled
- **Events sent to WebSphere Business Monitor (WBM)**
 - create Monitor Model to allow WBM to provide insight into order processing
 - Observe orders being received, processed, cancelled
 - Study KPIs – numbers of orders received per week, time to process and dispatch orders, etc.
 - Take action when thresholds exceeded, when value of a customer's orders exceeds a certain amount, etc.



Retail Scenario offering Customer Convenience



- **Customer purchased items online for the past two months**
- **This month, send a reminder for easy re-order of the items**
- **More elaborate scenarios could involve**
 - detecting a change in a customer's normal ordering pattern and responding to this
 - studying the ordering selections, or patterns of orders, of more active customers, and using these to make suggestions to less active customers
 - using geographical information to make relevant suggestions

Manufacturing Scenario for Operational Efficiency

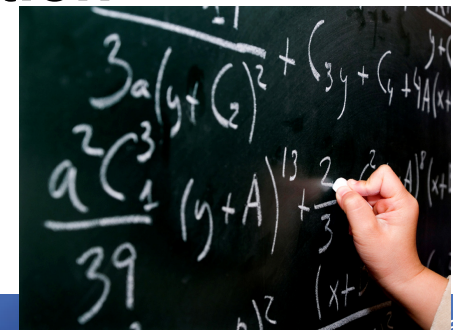
- **A product uses parts A, B and C in its manufacture**
- **When an order is received for the product**
 - Order parts A and B from the suppliers
- **When both orders for parts A and B confirmed from the respective suppliers**
 - Order part C from warehouse
- **When parts A, B and C all received**
 - Initiate manufacture of product

- **It might be that all requests for manufacture of the product and ordering of the parts are handled by CICS applications, or some of this might involve processing outside of CICS**
 - WBE can process the events from multiple sources



Education Scenario

- **Student registration and course management system, running in CICS, extended to send email messages to students when classes are cancelled or relocated at short notice**
- **When class details are updated, an event is emitted to WBE with class, location and student group IDs**
- **WBE takes action to deliver the event to the student, using the embedded email action connector**



Questions?