

IBM Content Manager Field Announce

VideoCharger V7.1 Content Manager V7.1

Contacts:

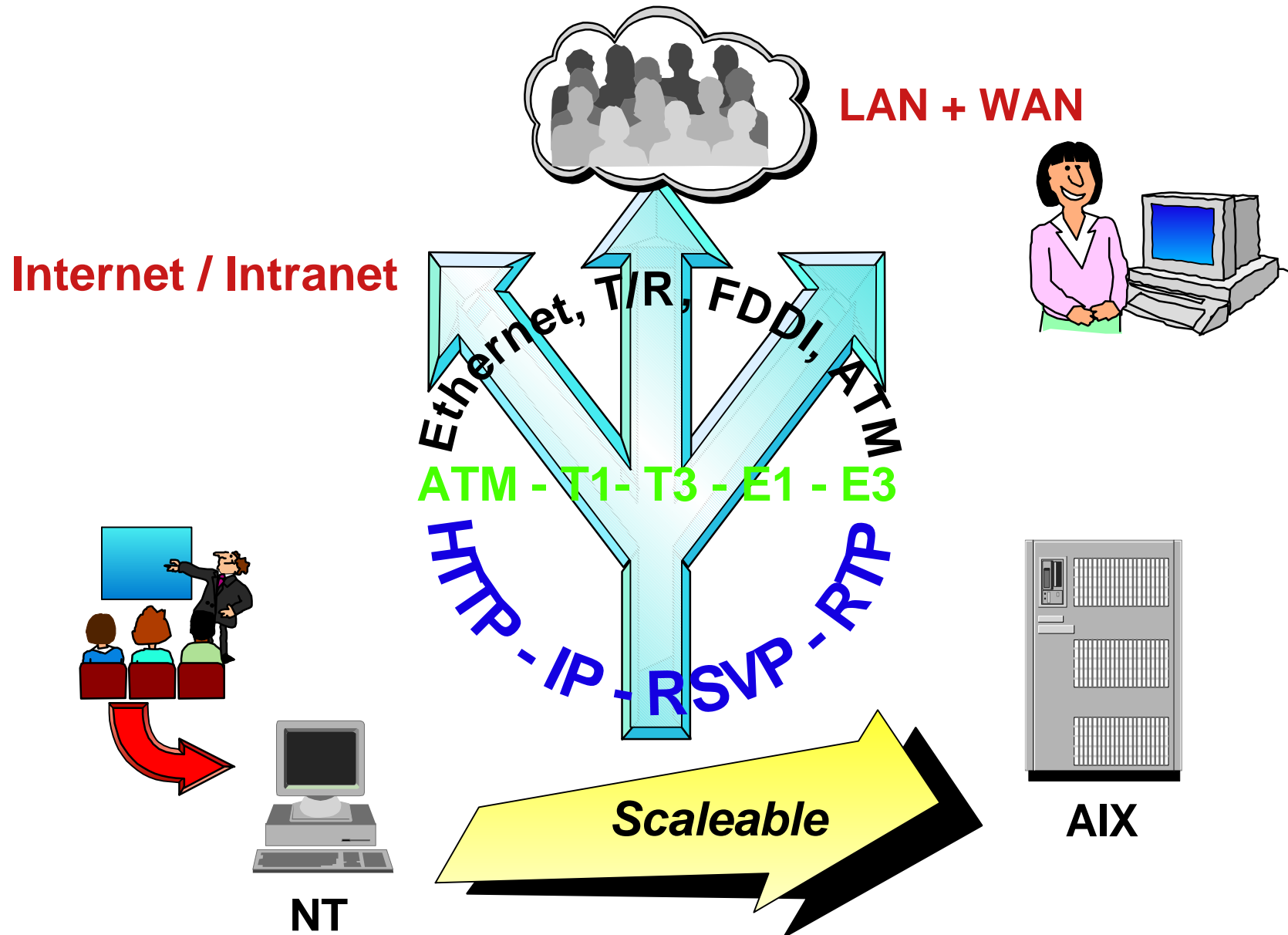
Bob Yacenda - VideoCharger

Ross Hollander - Content Manager

Intranet site: <http://d25web1.torolab.ibm.com/db2info/dmw3site.nsf/dm/cm>

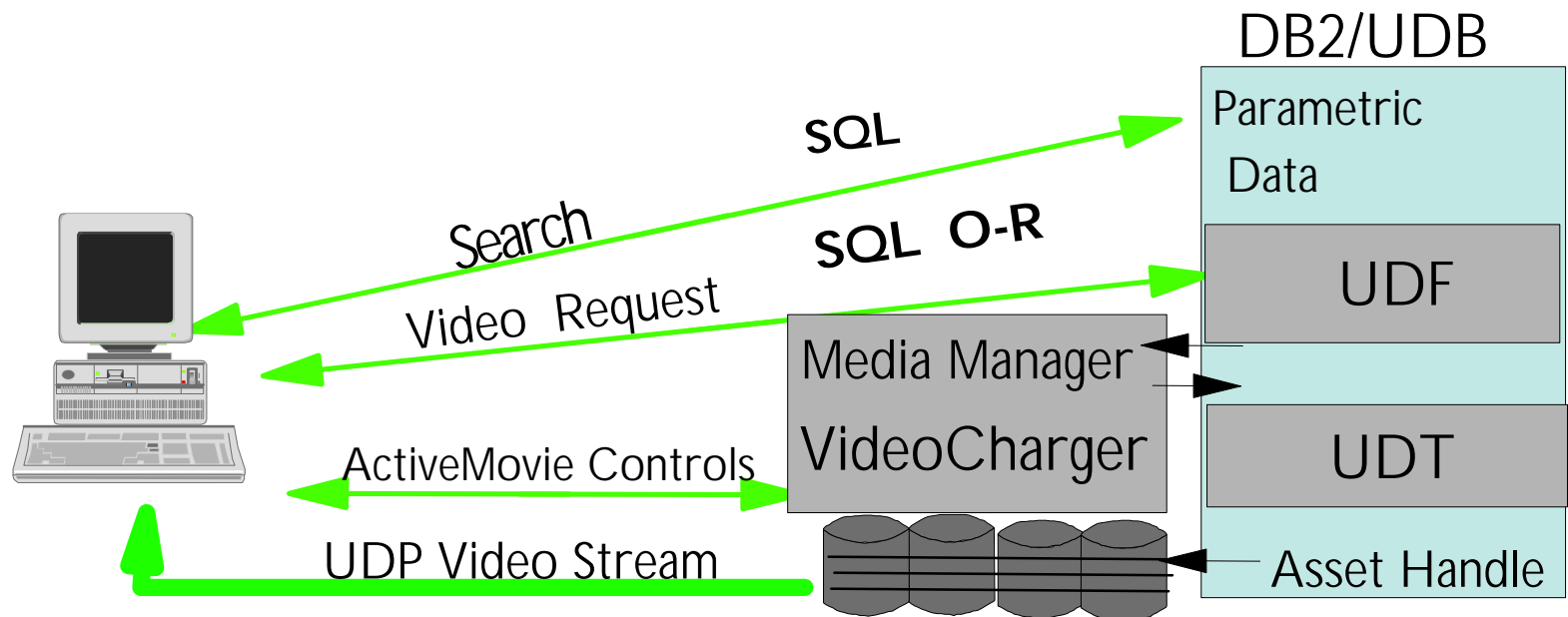
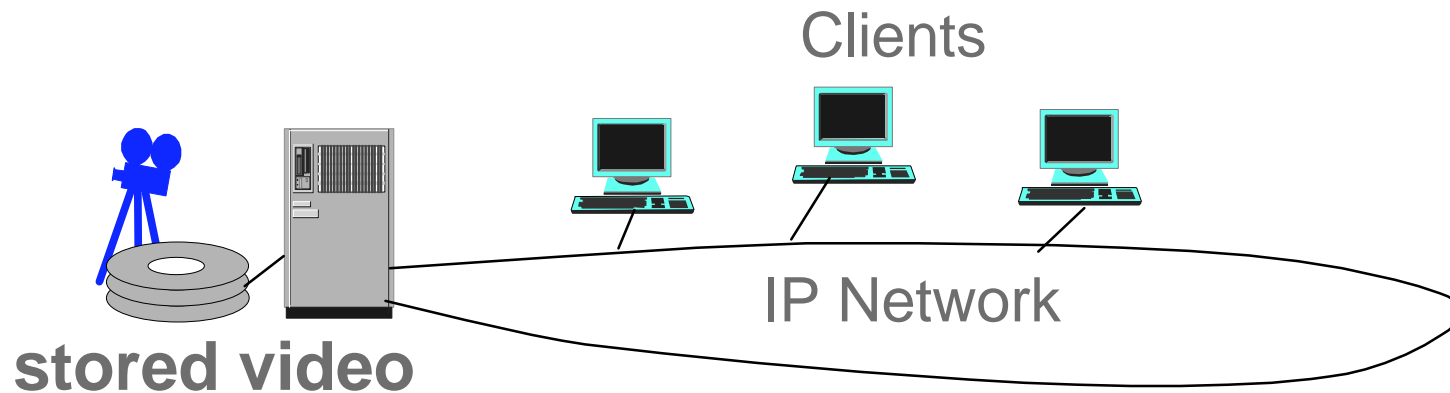


VideoCharger - Basics



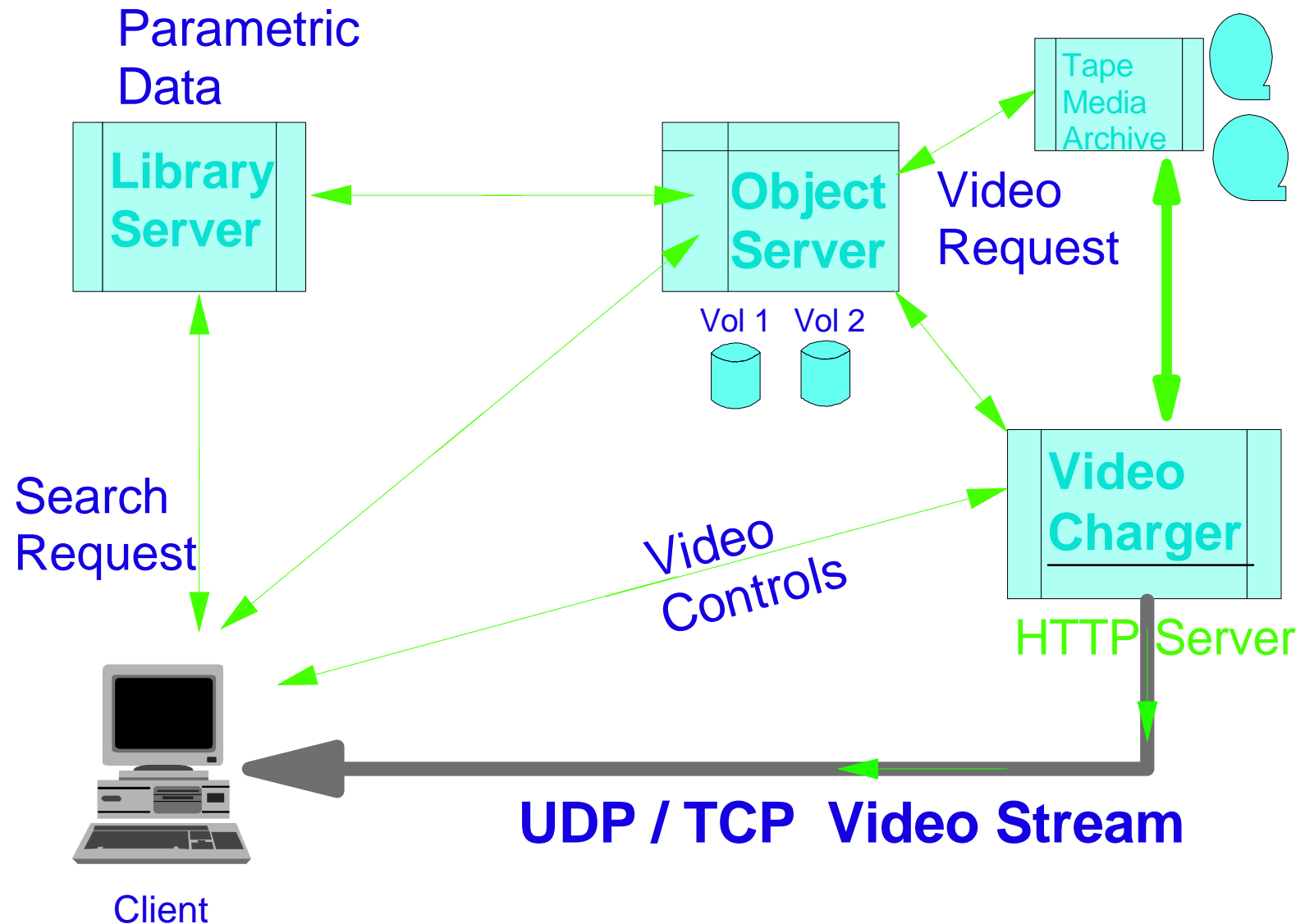
VideoCharger Configurations

standalone or DB2/UDB extender



IBM VideoCharger Configurations

Content Manager Integration



New to...VideoCharger V7.1

- First, we have a new name..again!!
IBM Content Manager VideoCharger V7.1
(was IBM CM VC V2, that was IBM DB2 DL VC V2)
 - Value .. consistent brand name - video streaming is a function of Content Manager with all components at the same level.
- MS Windows server platforms (now NT and 2000) have slick ease of install procedures
 - Value .. better user experience, less cost to the customer.

New to...VideoCharger V7.1

- Increased streaming bit rate, from 8 Mbitps to 15Mbitps!!
MPEG2 to devices with properly configured decoders.
 - Value .. Increased value to customers for Intranet and Broadcast quality content, a must for some Video On Demand applications.
- Apple Quicktime (QT4) support
 - Value .. supports streaming to Macintosh + Windows clients using Apple Quicktime4 player.
- IBM HotMedia support
 - Value .. supports streaming of low bit rate multimedia content to transparent Java client. (No code is installed on client) Opens up the Internet market to VideoCharger.

New to...VideoCharger V7.1

- Integrated controls for Optibase and FutureTel MPEG encoder product families
 - Value .. support for leading content creation components when real-time content creation is required, as in live streaming of lectures or performances.
- New Filter technology to support server level plug-in of special functions like encryption, live network capture, watermarking, new codecs (MPEG4, MPEG7, others)
 - Value .. allows customers to take advantage new requirements like the use of EMMS or BP/ISV video/audio watermarking products, without having to change or reload the existing content files.

New to...VideoCharger V7.1

- Improved performance, scalability, reliability
 - Value .. Increased value to customers for system growth and management of streaming content.
- Tivoli Storage Manager support for archive storage devices controlled by AIX TSM.
 - Value .. allows customers to take advantage of LTO tape subsystems and other high density devices to store content. Tremendous value to customers with large content libraries that are seldom accessed.

Content Manager V 7.1

AIX / NT Environments

Summary: What's new in CM 7.1

- Several Major new functions added
 - ▶ Versioning, Multi-Value Attributes, Replication
- Architectural Changes
- Serviceability Improvements
 - ▶ Dynamic Tracing and tools
- Certifications
 - ▶ Windows 2k Server
 - ▶ Tivoli Ready

Multi-Value Attributes

- Example: Claim has multiple types of damage
- Designate the 'Damage' attribute to be multi-Value, such as home and auto,
- APIs are enhanced to support multiple values
- SysAdmin supports the designation
- Custom app's only: Not exploited in EIP or Client App

Value: Customers building custom integrated applications have more flexibility in their data model. Attractive in media applications and in large corporate customers.

Versioning

- Allows creation and manipulation of multiple versions of a given part.
- Objects viewed in CM Viewer can have annotations versioned. Objects launched or linked can be versioned.
- APIs enhanced.
- Library Server tables changed to give faster access to the latest version.
- Windows client exploits, but not EIP

Value:

- Document Mgm't requires check-in / check-out (which we had) and Version Control (which we are adding). Our target is support for critical business work processes, not KM centers.
- Version control on annotations provides the ability to retain a record of changes. Initially rejected, now accepted

Specifying Version Control

The screenshot shows the 'ODMA TEST - Properties' dialog box with the 'Definition' tab selected. The 'Maximum versions allowed' field is set to 32767. A red arrow points from the text below to this field.

Field	Value
Name	ODMA TEST
Abbreviation	
Language	US_ENGLISH
Access list	All Privileges
Maximum versions allowed	32767

Key fields

Available key fields	Assigned key fields
Account_No	Description
Account_num	Account Number
Check number	Last_Name
Class	
client	
Comment	
Comments	
Crime	
CSLD_Cat	

0 / 68 Selected

0 / 3 Selected

Key field to represent object: Account Number

Buttons: OK, Cancel, Apply, Help

Simply specify the number of versions allowed when defining your index class

Version Control in Client App

Client Application - Document: 99999999

File Actions Workbasket Search Options Window Help

Folder: <Search Results>

<Search> ODMA TEST

Description	Account Nu...	Last_Name
Tif	99999	goncalves
PRZ	99999	goncalves
DCAft	99999	goncalves
wordpro	99999999	goncalves
DCAft	99999	goncalves
from noin...	99999	goncalves

Selected Doc

5 Versions

1 Item(s) 1 Selected Total 1 Selected in "ODMA TEST"

Versions List for Document: 99999999

Version	Last Updated	Created	Size	Date
5	2001-01-17-02:55:34.119679	2001-01-17-02:55:34.119679	154692	Won
4	2001-01-17-02:08:43.915771	2001-01-17-02:08:43.915771	154708	Won
3	2001-01-16-20:05:55.287757	2001-01-16-20:05:55.287757	152688	Won
2	2001-01-16-19:23:57.360768	2001-01-16-19:23:57.360768	154692	Won
1	2001-01-16-19:22:01.244421	2001-01-16-19:22:01.244421	151656	Won

Open Cancel Help

Document: 99999999

Version 5 Displayed

Lotus Word Pro 97 README

Version 5

Read this first if you are installing Word Pro 97 for Windows 95 and Windows NT

This file contains the following updated and new information about Lotus® Word Pro™ 97 for Windows 95 and Windows NT:

- Checking your package
- System requirements
- Installation information
- Support information
- New features
- Notes and updates to the product
- Tips and tricks for using Word Pro
- Macro and Script information
- EXTRAS

Checking your package

Before you install Word Pro, take time now to check the CD and documentation in your Word Pro for Windows package. If your package is not complete, refer to "Missing or Defective Components" in the *Lotus Customer Support Guide*.

CD-ROM

If your Word Pro package is a Node Edition, it does not contain a CD-ROM. Please contact your system administrator for further information. If your computer does not have a CD-ROM, Lotus will provide you with a diskette version at no charge. For information, refer to "Media Exchange" in the Lotus Customer Support Guide.

Documentation

Your Word Pro package should contain this documentation:

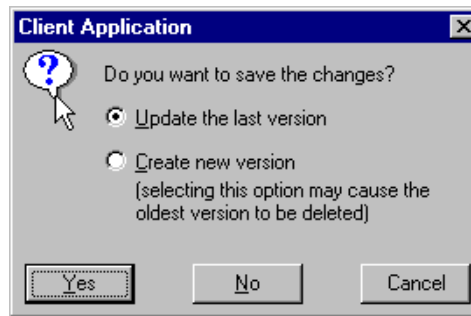
- *Exploring Lotus Word Pro*
- Lotus Customer Support Guide
- Lotus Warranty Registration Card
- Lotus Software Agreements

Page 1

For Help, press F1

<no active workbasket>

Saving Changes in Client App



When you close the document

- Choose to update the latest version or create a new version
- Warning is that if the system is set to a maximum such as 5 versions, then the save of the sixth version will remove the oldest. (32K versions are supported)

ODMA

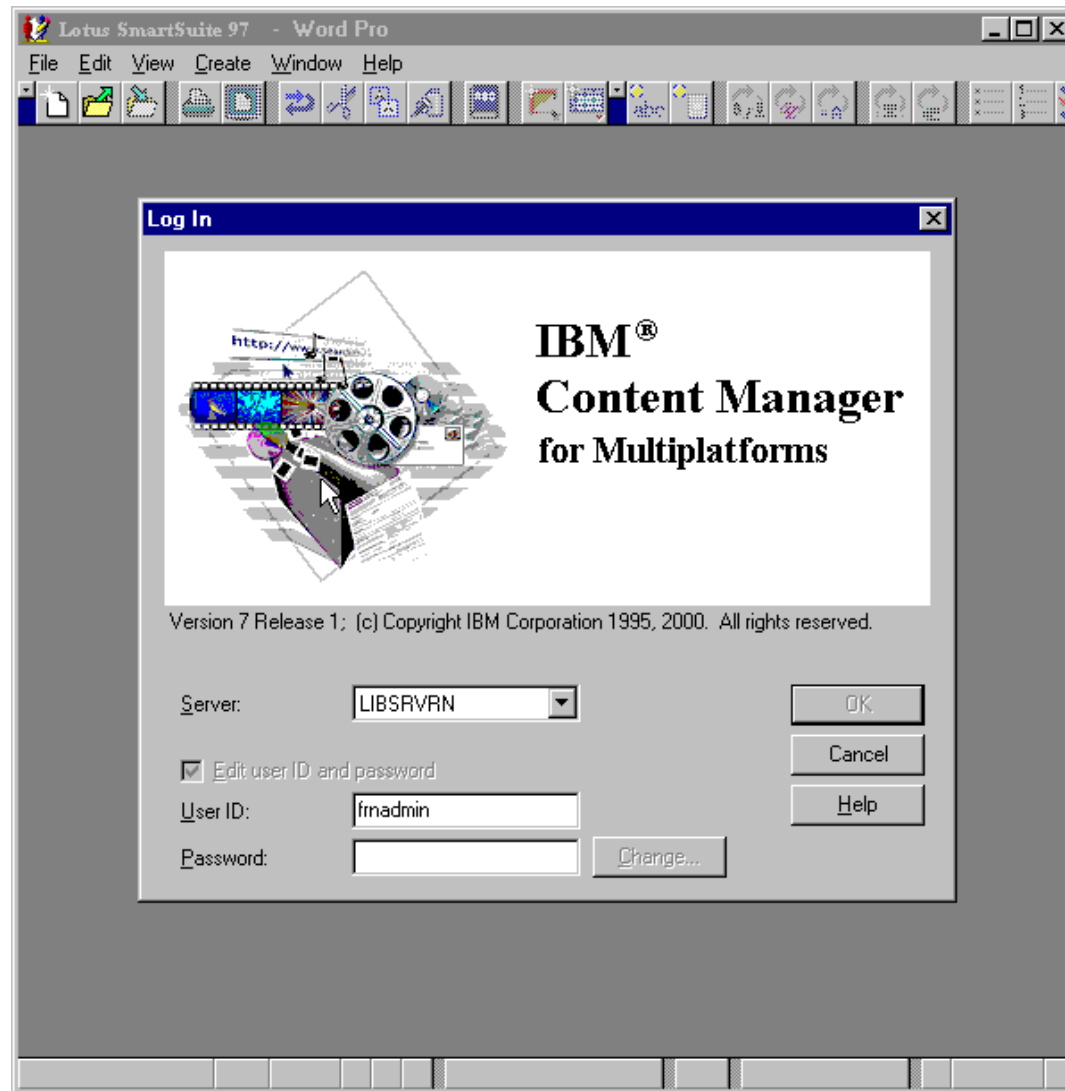
■ ODMA

- ▶ Open Document Management APIs
- ▶ Our implementation is based on the 2.0 ODMA Spec
- ▶ Applications must be ODMA enabled to work
- ▶ Allows desktop apps (MS Word, WordPro, etc.) to store/retrieve directly to/from CM
- ▶ Refer to the product README for peculiarities of various applications (not IBM CM Issues)

Value:

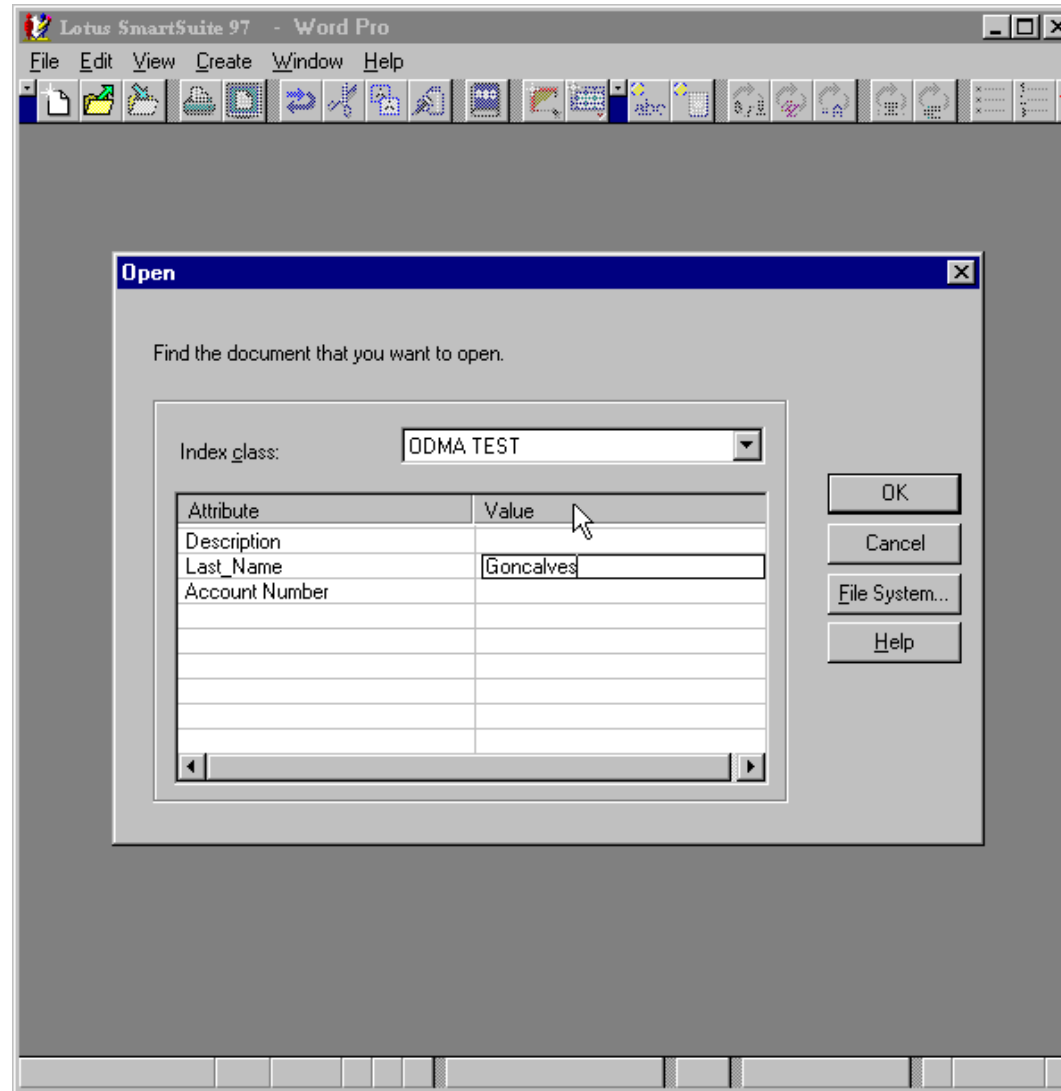
- Seamless interface for users to open and save files to CM
- Great complement to our high volume document imaging applications so that supporting documents created during processes can be easily stored.

Logon Panel for ODMA



If Single Logon is enabled, then you simply press OK. You have an option to change password and ID

CM Search via ODMA



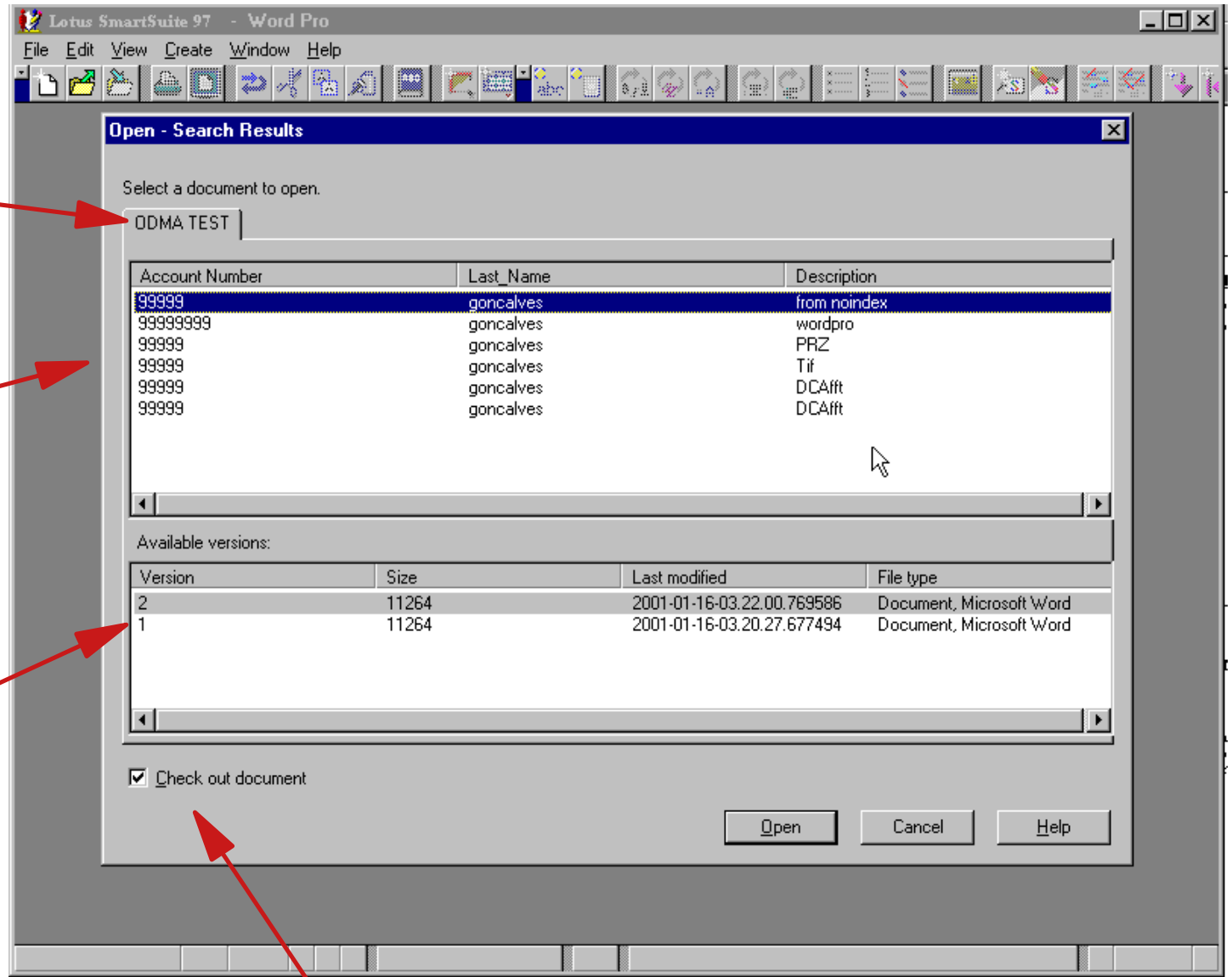
File/Open - Then select index class and enter a value or values to search on

ODMA- Select Document and Version

Index.class.
listed.here...If.
more.than.one,,
then.you.see.
tabs

Documents.
which.match.
your.search

Versions.of.the.
highlighted.
document.listed.
above



Option.to.check.out.the.
document.or.iust.view

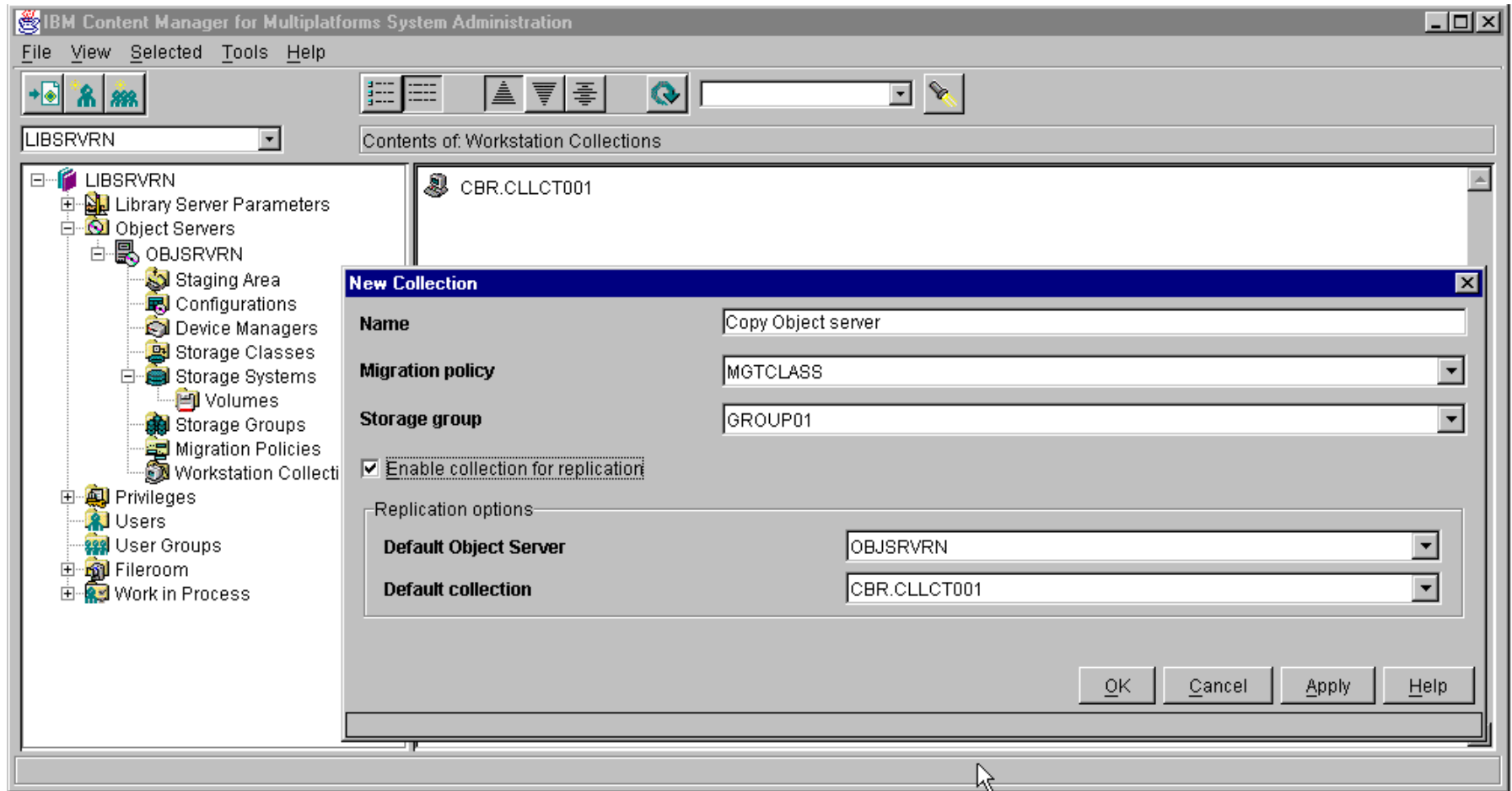
Replication

- Copy objects to another Server
- Objects retrieved from primary server unless primary is not available
- Configured thru SysAdmin, transparent to the user
- Sync/Validate utility to keep replicas in sync. (note: this utility also helps examine Library and Object Server sync)

Value: Reliability and Availability, Also network configuration

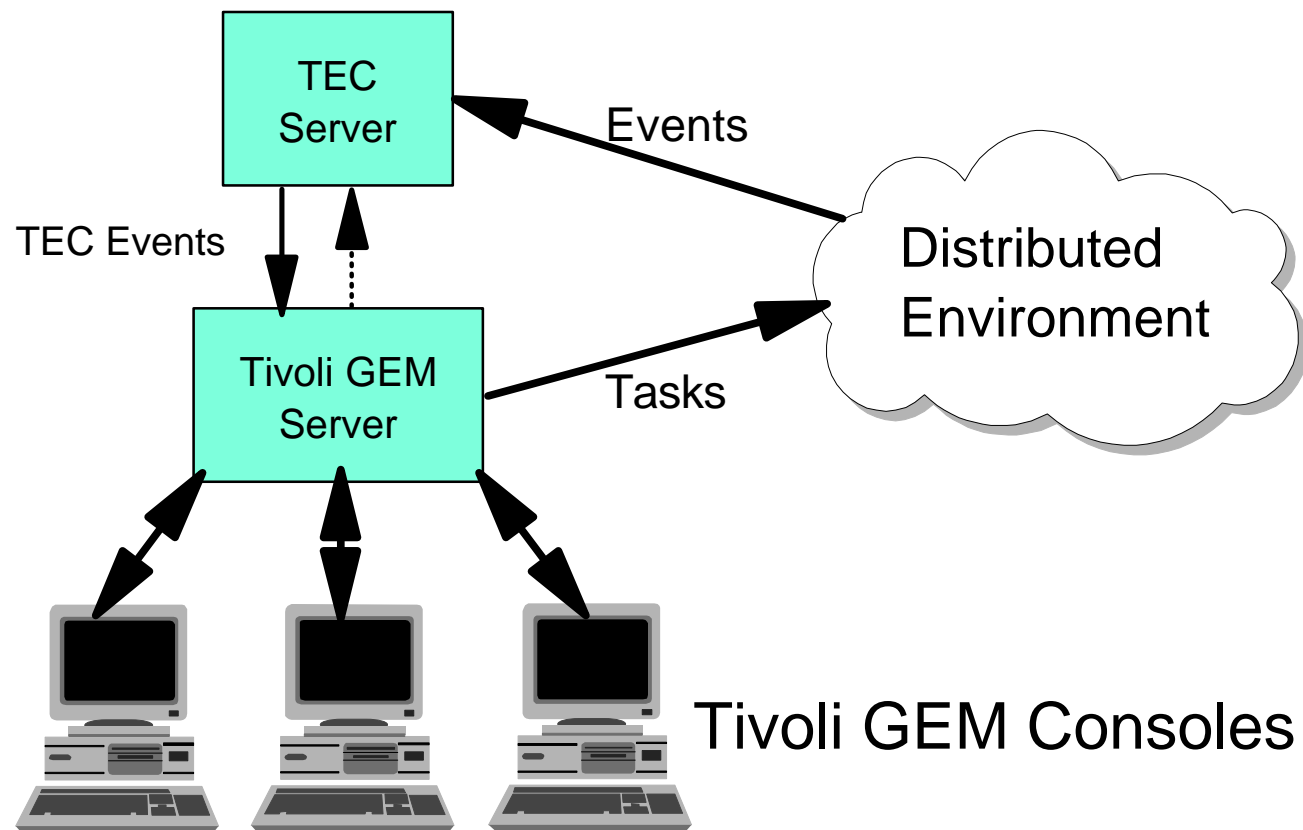
- Part of a comprehensive data backup and recovery plan to provide off-site storage.
- The library server will failover to a copy server if a server down condition is detected.
- A Bank HQ could have a Copy Server, and the banks 10 remote branches could have primary servers

Replication Definition



Select New Collection and enable your collection for replication.

Tivoli 2000 Certification



Value: Easier management of a CM environment (NT/AIX)

- Finer grain monitoring of permanent processes; Not just up or down
- Graphical display of service on GEM console
- Connections between Library and Object Servers are viewable
- Thresholds on CPU and memory are monitored
- Start/Stop the server from the GEM console

Windows 2000 Certification

- NT Services
 - ▶ LS, OS, and SMS Servers now run as NT Services.
 - ▶ Can be configured to auto start at boot time.
 - Use 'Auto Connect' feature for Oracle.
 - ▶ Remote start/stop by the 'net start/stop' command
- Use of Active Directory for server location information
- Single Logon

Value:

- Meets customer and RFP requirements
- Users like single logon
- Actually a more secure logon
- Uses Microsoft's implementation of LDAP in Active Directory

Architectural Changes

- Significantly changed the communications subsystem to enhance reliability and serviceability. - Details in T3 presentation
- Serviceability Improvements
 - ▶ Dynamic Tracing enabled so that stopping a server is no longer required
 - ▶ Improved and additional diagnostic tools.

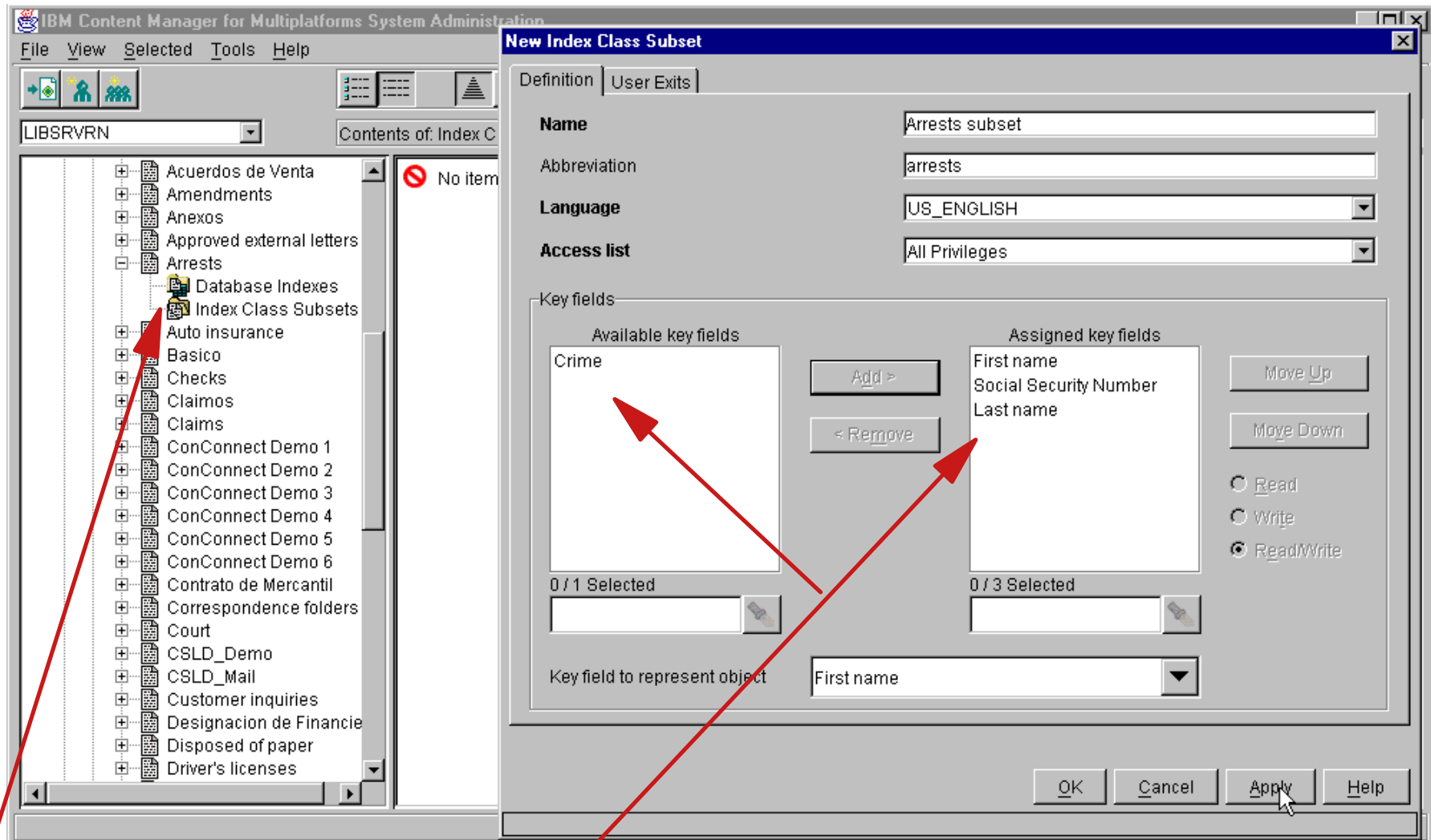
Value:

- Reduced downtime as problems can be addressed faster

Other Enhancements

- Index Class Subsets
 - ▶ Example: Personnel Applications
 - Managers can see fields on salary, but HR personnel cannot
- Attribute Value Lists are possible
 - ▶ Example: List of Insurance Agents, States
- User Option Exit in Windows Client
 - ▶ Allows you to add menu items that act on documents with your own custom code.
 - Example: e-mail a document
- Workbasket item counts
 - ▶ Improve performance for opening workbasket table of contents - Limit counts; allow user to select a basket and show the count for that basket when needed

Index Class Subset Setup



Create new Index Class Subset

From available Key Fields, select only those that you want in the Subset. In this case, we don't want the Crime

Summary of Announcements

- CM VideoCharger
 - ▶ QT4 support for streaming to QT4 player
 - ▶ Faster - 8 to 15 mbits per second
 - ▶ Hot Media Transparent player
 - ▶ Filter technology - opens us up for options
- Content Manager (AIX and NT)
 - ▶ Windows 2000 and Tivoli Certifications
 - ▶ Document Versioning and ODMA
 - ▶ Replication - Hot backup, configuration flex.
 - ▶ Serviceability