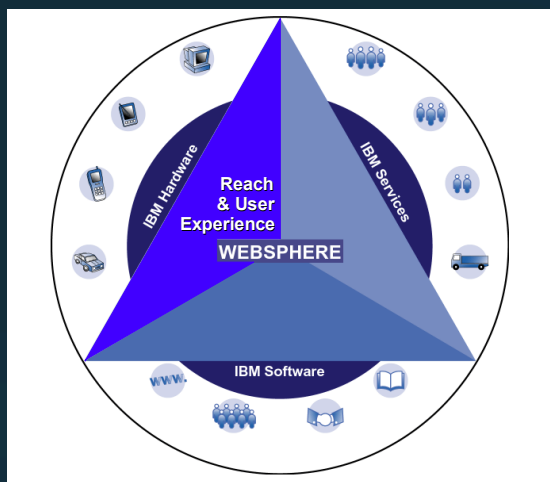


WebSphere Portal



Creating personalized and collaborative experience for employees, partners and customers

WebSphere software

Lotus software

Tivoli software

DB2 software

10/18/01

Tim Thatcher
 thatcher@us.ibm.com
 (512) 838-9605

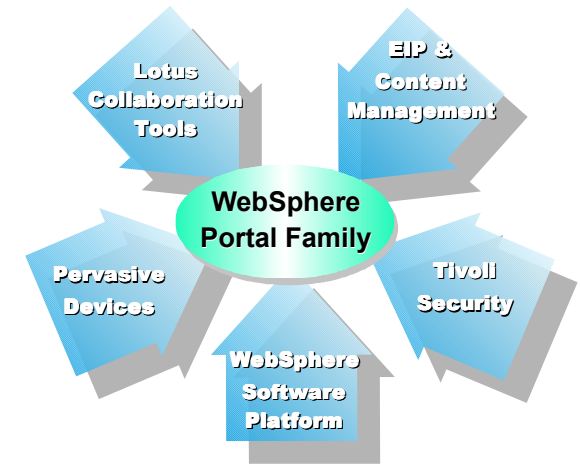
IBM Portal Strategy

- Provide a single family of portal offerings

- ▶ Based on all relevant products across SWG

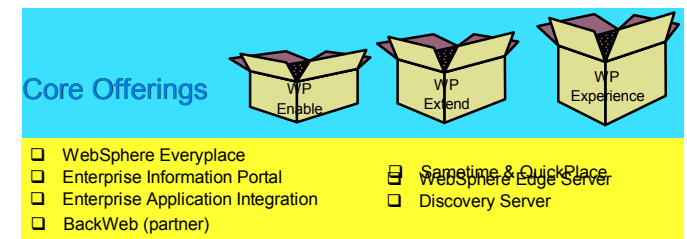
- Provide a horizontal portal solution

- ▶ Multiple portal solutions, spanning B2E, B2B, B2C
- ▶ Integrated collaborative services
- ▶ Wired and wireless devices
- ▶ enterprise and service provider requirements



- Provide a framework that enables extended features

- ▶ EIP for advanced information integration
- ▶ Lotus for collaboration and Discovery Server
- ▶ Tivoli for advanced user management/security management
- ▶ Business Partner and Customer provided



- Leverage the robustness of the WebSphere family

- Build portfolio of portlets via

- ▶ In house development
- ▶ Implementing an aggressive business partner program
- ▶ Provide tooling/enablement for customer and business partner development

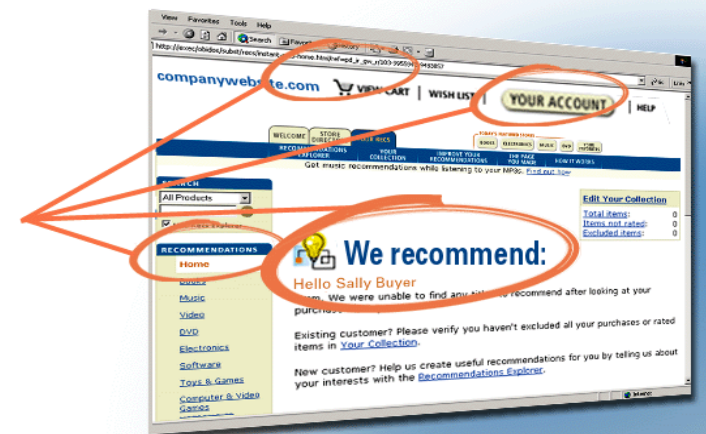
Portal Family Value Proposition

WebSphere creates a compelling, dynamic user experience for B2E, B2B and B2C Portals

Effective, efficient access to
content, applications, and people

They don't know who I am
They don't know what I like
They can't customize for me
They don't let me add value myself
They can't make recommendations
Information is decentralized and hard to find

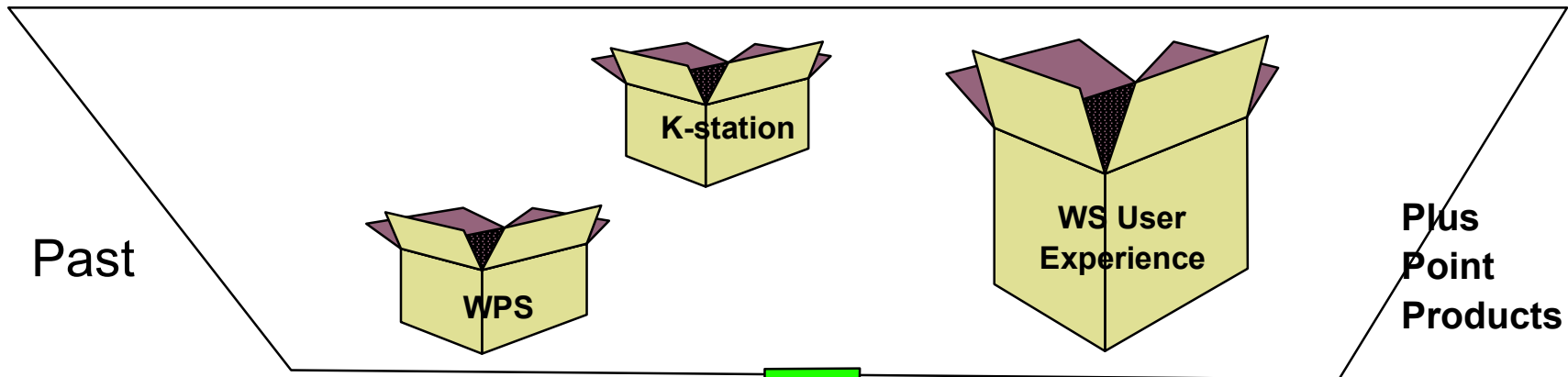
- Customization**
- Personalization**
- Recommendations**
- Portalization & syndicated content**
- Collaborative e-Teaming**
- High-quality content**



10/9 WebSphere Portal Family Ann.

- **WebSphere Portal Family Offerings**
 - ▶ WebSphere Portal Enable
 - ▶ WebSphere Portal Extend
 - ▶ WebSphere Portal Experience
 - ▶ Can order 10/09
 - English eGA 11/09, GA 11/30
 - NLV eGA 12/09, GA 12/31
- **SAP iViews, WebSphere Edition**
 - ▶ Portlets for SAP, BAAN, Oracle, Peoplesoft and Siebel
- **New Business Partner agreements**
 - ▶ 7 new portlet providers
 - ▶ Channel partners (e.g. Perficient)
- **Withdrawal from Marketing:**
 - ▶ UEX, Interwoven, WPS 1.2, and K-station

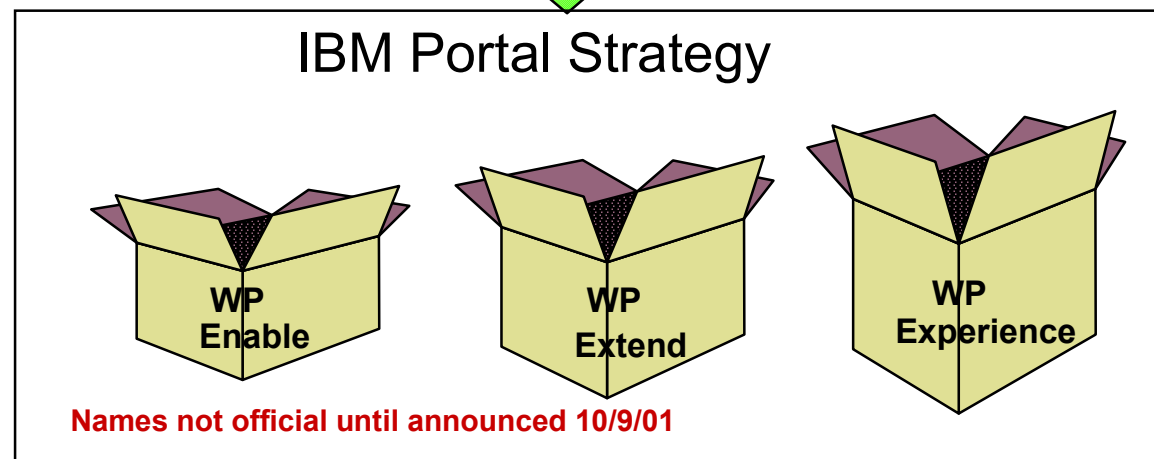
Portal Family Offerings Plan



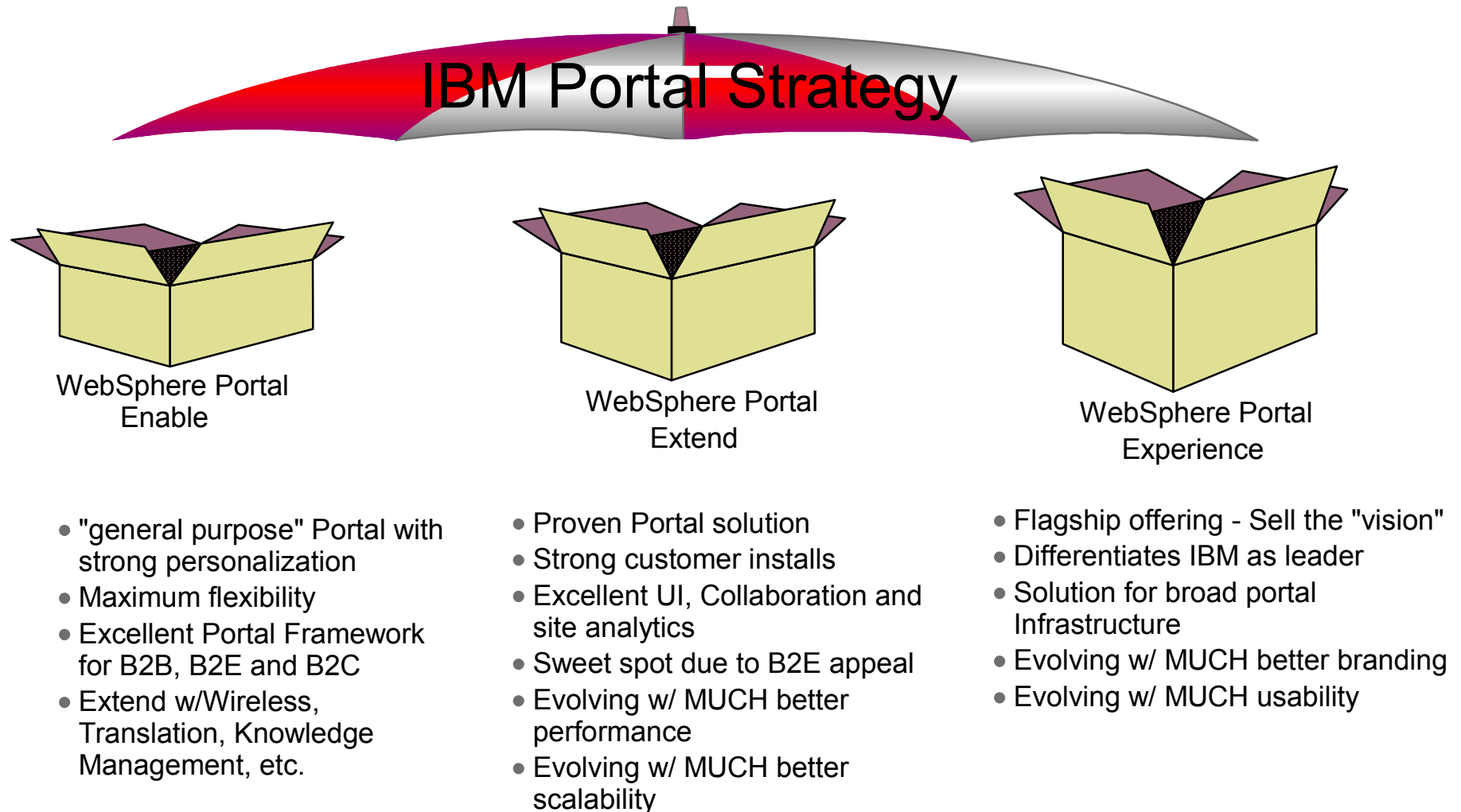
Change Offering Structure

New Offerings

Offerings defined and new deliveries in 4Q01 with K-station, WPS, and UEX merged



WebSphere Portal Family Positioning



WebSphere Portal Enable

- **WebSphere Portal Server 'V2.1'**
 - ▶ **WPS Framework**
 - Presentation Services
 - Portal Services
 - Portal Infrastructure
 - ▶ **Portlets**
 - Ready to run
 - Samples
- **WebSphere Personalization 3.5.2**
 - ▶ Rules engine
 - ▶ Recommendation engine
- **WebSphere Application Server, Advanced Edition 3.5.4**
- **IBM Secureway Directory 3.2.1**
- **DB2 UDB 7.2**
- **Price (USD):**
 - ▶ PPA level A: \$61,875
- **Licensing**
 - ▶ **For use with Portal only**
 - WAS
 - Personalization
 - UDB
 - Secureway Directory
 - ▶ **Personalization**
 - License for 25k profiles
 - ▶ **UDB/Directory can be installed on separate processor**

Enable does not contain Domino Extended Search

WebSphere Portal Server

- Provides a secure single point of access to diverse information and applications, personalized to the needs of the user
- Provides an open framework for creating multiple portal solutions
 - ▶ B2E, B2B, B2C
- Removes much of the overhead of developing user interfaces for multiple browsers or mobile devices
- Provides a portfolio of Portlets for the integration of content into the portal:
 - ▶ applications
 - ▶ syndicated content
 - ▶ collaboration
- Extensible through a flexible API based on industry web standards
- Includes industry leading Personalization technologies that can be utilized to improve the overall user experience

WPS New Additions

- **Portlet Support**
 - ▶ **Portlet Applications**
 - Enables inter portlet communication
 - ▶ **Portlet Cloning**
 - ▶ **Improved ACL Portlet**
 - Support for Portlet Applications, Cloning, and Child Portlets
- **WES 2.1 support**

Enhancements also included in WPS 1.2 Fixpak 2

Personalization

- Portal screen Customization
 - ▶ Layout, formatting, color schemes
 - ▶ Manually add portlets
- Portlet Filters & Parameters
 - ▶ Each user Sets controls by portlet
- WebSphere Personalization -- Rules Engine
 - ▶ Rules & Scripts based on user profiles
 - ▶ Resource Engine -- Role-based groups of people
 - ▶ Interacts with Java Server Pages
- WebSphere Personalization -- Cross-selling
 - ▶ Recommendation Engine -- predict
 - ▶ Observation based - watches website behavior
 - ClickStream analysis
 - ▶ Product affinity analysis for cross selling



WebSphere Portal Extend

- **WebSphere Portal Enable**
- **Lotus K-station 1.1**
 - ▶ WPS Interoperability bridge
- **Lotus Domino 5.0.8**
- **Lotus Sametime 2.5**
- **Lotus QuickPlace 2.0.8**
- **Lotus Domino Extended Search 3.5.1A**
- **WebSphere Site Analyzer 4.0**
- **Price (USD)**
 - ▶ PPA Level A: \$106,875
- **Licensing**
 - ▶ Allow WPS to be installed twice:
 - Once as WPS
 - Once for use with k-station bridge
 - ▶ Allow WAS to support
 - WPS
 - WPS with k-station bridge
 - K-station
 - ▶ K-station on separate processor from WPS
 - ▶ ST&QP
 - Restricted function:
 - Instant Messaging
 - Real-time awareness
 - Place-based repositories & search
 - Limited to portal users
 - ▶ Domino for k-station support only
 - ▶ DES for use within portal
 - ▶ All other Enable licensing conditions apply

K-station

iREEL Studios **iREEL Personal Portal for Beverly DeWitt**

Hello Beverly DeWitt, Your personal place has been created on the fly for you based upon your title and job role. This Portal is iREEL's corporate standard for Executive Producers. Please use the links below to gain access to the most commonly used applications within iREEL's Intranet. To customize the look and feel and to add some portlets, you can easily change them, rearrange them, and add new ones.

Find out more about customizing your place.

Executive Producer QuickLinks

- iREEL Intranet
- iREEL Yellow Pages
- iREEL Web Site
- iREEL Live Help Desk
- Hollywood Reporter

Executive Forum

Date	Topic
12/22/2000	Budget for Love Notes location shoot
12/22/2000	Movie Release Project Plan
12/22/2000	Post-production contractors
01/07/2001	Please send me the new scripts

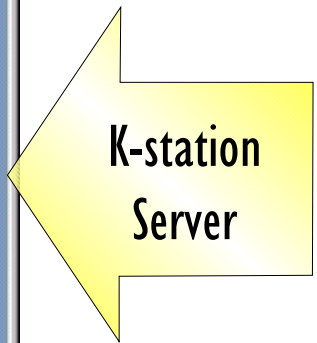
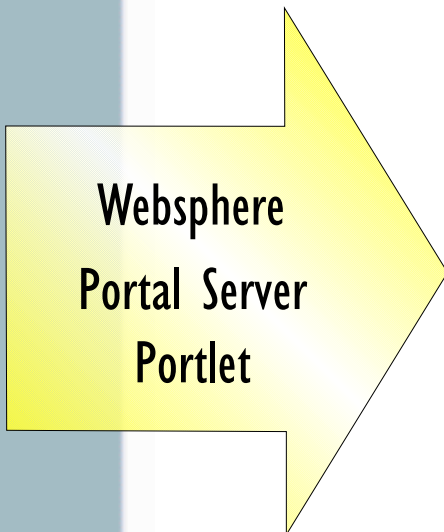
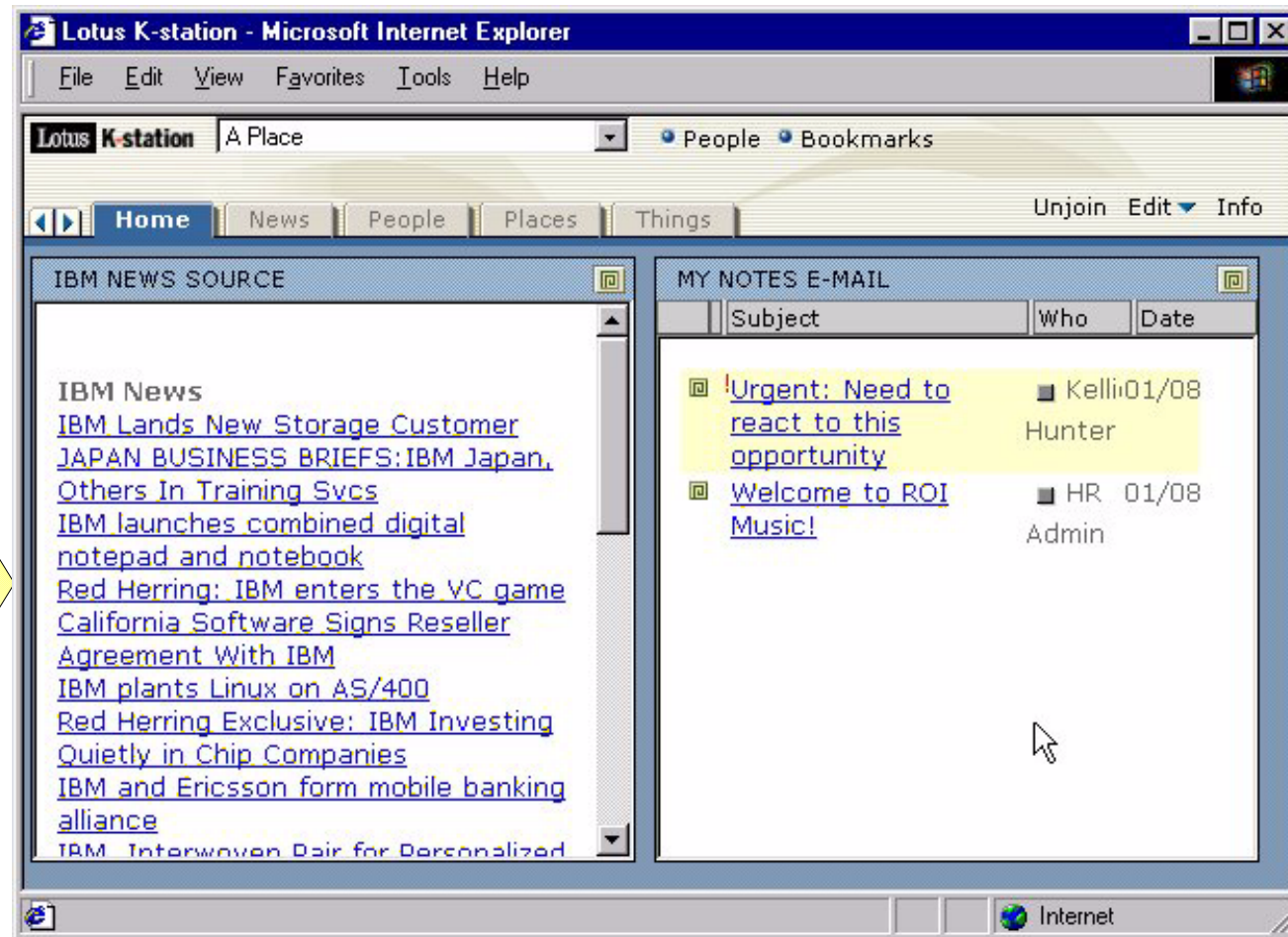
iNotes Web Access To Do List

To Do	Due Date	Status
Final Rewrite of script changes are due	01/16/2001	Current
Make reservations for conference	01/26/2001	Current
Pick up tennis racket	01/20/2001	Current
Post the new documents to iREEL	01/29/2001	Current
Rewrite scripts	01/19/2001	Current
Send Scott the new script for Love Notes	01/15/2001	Current
First draft of "Omni" script due	01/16/2001	Current
Move offices	01/10/2001	Current
Send in form for HR Review	01/02/2001	Current

WPS to K-station Bridge

- K-station 1.1 installed on Domino 5.0.7a server or greater
- WPS component acts as portlet server to K-station
- Portlet configuration through WPS UI
 - ▶ WPS administrative task
- Portlet discovery through K-station UI
 - ▶ K-station user task via portlet catalog
- WPS with bridge code cannot be used as Portal server
 - ▶ portlets on this particular box cannot be shared with other WPS servers
 - ▶ Separate install of WPS required to get full portal capability
- Bridge only supported on Windows NT/2000

Bridge: End User View

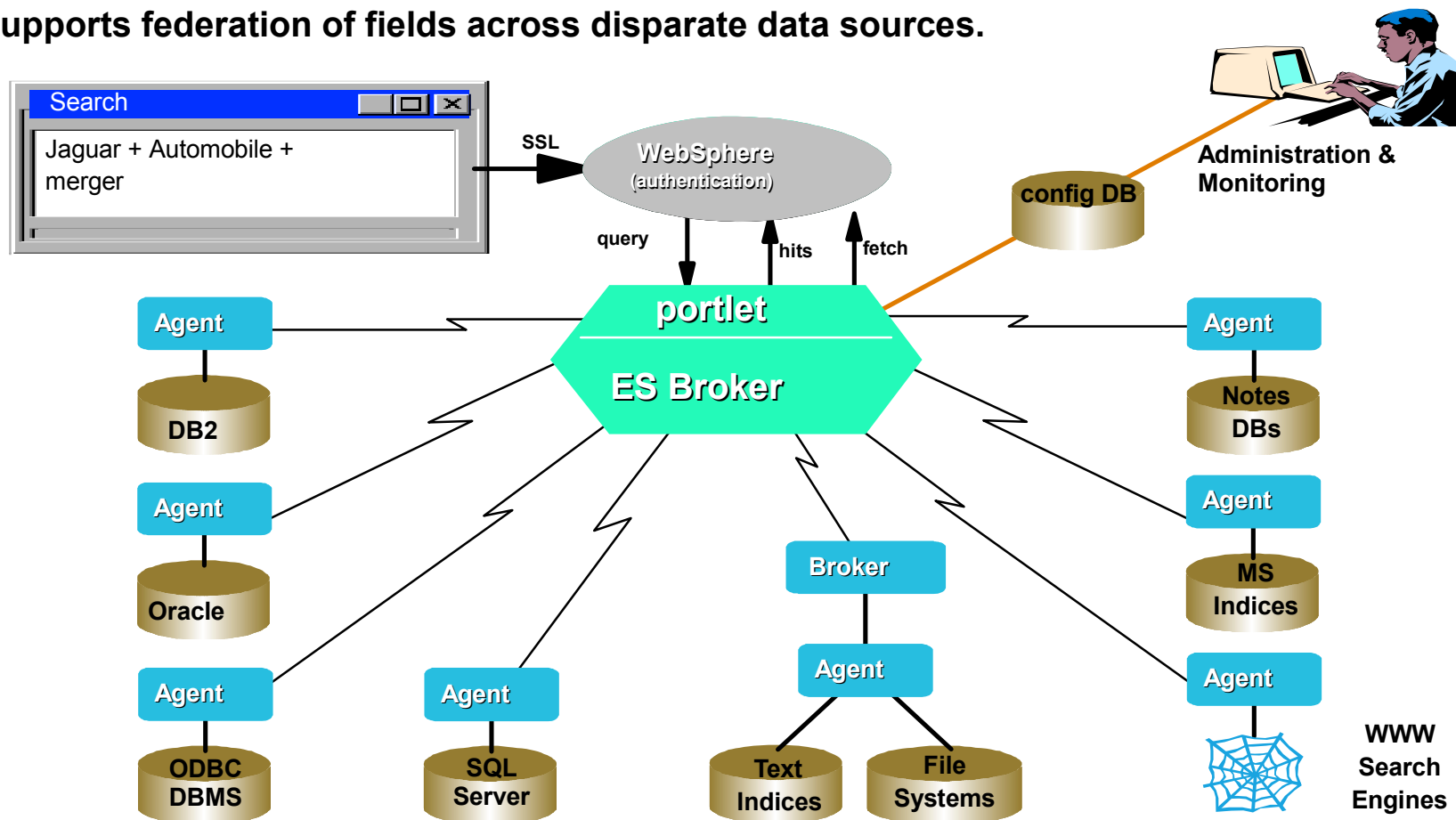


K-station WAS Hybrid

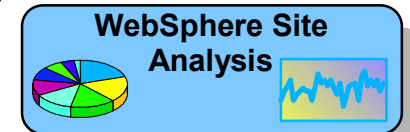
- **New in K-station 1.1**
- **Domino's Servlet engine is default**
- **WAS can optionally be used as a Servlet engine**
 - ▶ **Domino Plug in available out of the box with WAS**
 - ▶ **Tested with WAS 3.5 (service Pack 4)**
- **K-station servlets need to be registered in WAS**
- **User experience is not changed**
- **Performance is improved by up to 300%**
 - ▶ **Recommended for large scale environments**
 - ▶ **PIM Portlets (email, calendar, notes views) do benefit**

Extended Search

- It accesses your information no matter where it is or how it is stored.
- It employs a distributed search technology.
- Supports multiple, heterogeneous indices.
- Does not require re-indexing of data.
- Lets indices be co-located or dispersed.
- Executes multiple searches in parallel.
- Supports federation of fields across disparate data sources.



WebSphere Site Analyzer 4.0



- Detailed content and usage analysis of your Web site
- Rich reporting capabilities: reports formatted in HTML and XML can be distributed via e-mail or published to a Web site
- Analysis of Web content and site integrity
- Data capture from multiple sources including: HTTP server, FTP servers, application servers, WebSphere Application Server V4, WebSphere Edge Server, WebSphere Commerce Suite, and WebSphere Personalization
- Browser-based, real-time data capture via WebTracker
- Generates proxy traffic analysis for WebSphere Edge Server users
- Campaign and rule effectiveness analysis for WebSphere Personalization
- Shopping cart analysis for WebSphere Commerce Suite users
- Web Browser user interface for easy administration
- Includes IBM DB2 Universal Database(TM), and optional Oracle support
- International language support, including support for Spanish, French, German, Italian, Brazilian Portuguese, Japanese, Traditional Chinese, Simplified Chinese and Korean

WebSphere Portal Experience

- **WebSphere Portal Extend**
- **Tivoli Secureway Policy Director 3.8**
- **IBM Content Manager 7.1**
- **IBM EIP Client Kit 7.1.2**
- **Full function license for Sametime & QuickPlace**
 - ▶ **Limited to 1000 users**
- **Price (USD)**
 - ▶ **PPA Level A: \$652,500**
- **Licensing**
 - ▶ **Includes 4 licenses of Enable**
 - ▶ **Full WAS & Personalization license**
 - ▶ **ST&QP**
 - Full function license for 1000 users each
 - Do not have to be portal users
 - ▶ **Policy Director**
 - License for 4 x 2500 portal users
 - ▶ **IBM Content Manager**
 - License for 1 server node for CM
 - Gateway limited to 5000 unique users/month
 - ▶ **EIP Client Kit licensed for 4 processors**
 - ▶ **All other Extend licensing conditions apply**

Sametime Collaboration

Awareness

- ▶ Presence lists
- ▶ People links
- ▶ Place awareness

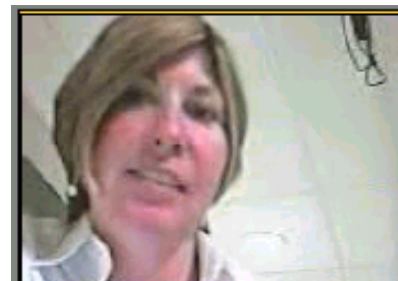
- core product marketing
- Brennan O'Hara/CAM/Lotus
 - Ed Brill/CAM/Lotus
 - Ida Parisi/CAM/Lotus
 - Jeanette Medlin/CAM/Lotus
 - Maria Sciortino/CAM/Lotus
 - Pamela Came/CAM/Lotus
 - Sheryl Higgins/CAM/Lotus

Name	Description
■ Chris Crumm..	Am Active
■ Cliff Reeves/..	Am Active
■ Chris Recklin..	Am Active

Conversation

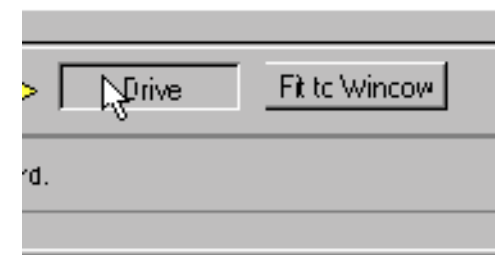
- ▶ Instant Messaging
- ▶ Group Chat
- ▶ Audio Video over IP

Chris Crumm.. Are you the fisher
 Cliff Reeves/.. Yes, I caught it to
 Chris Crumm.. Lets talk about w/
 Cliff Reeves/.. Sure, I can show:
 Cliff Reeves/.. I will meet you the

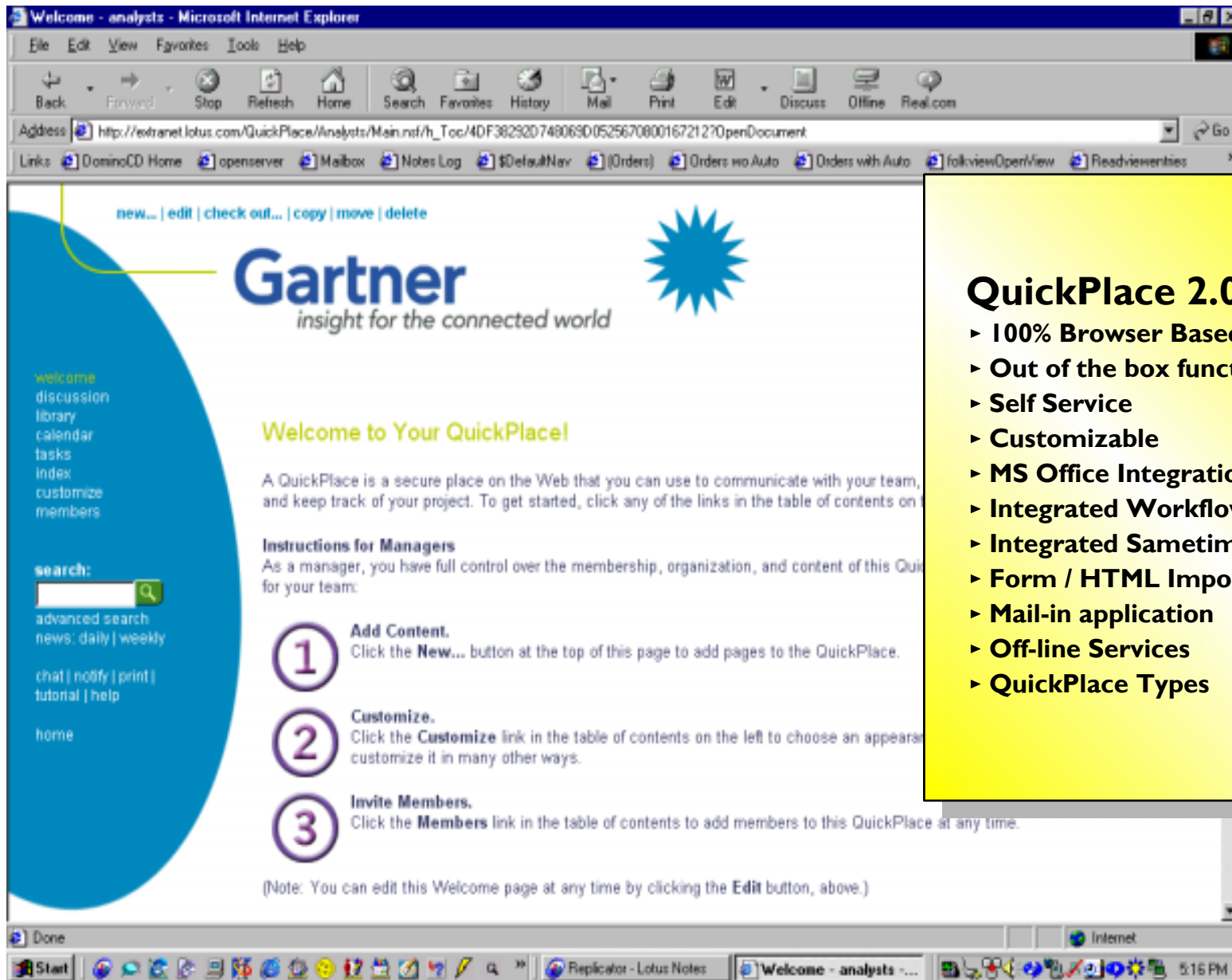


Shared Objects

- ▶ Whiteboard
- ▶ Applications
- ▶ Entire PC



QuickPlace Ad Hoc Collaboration



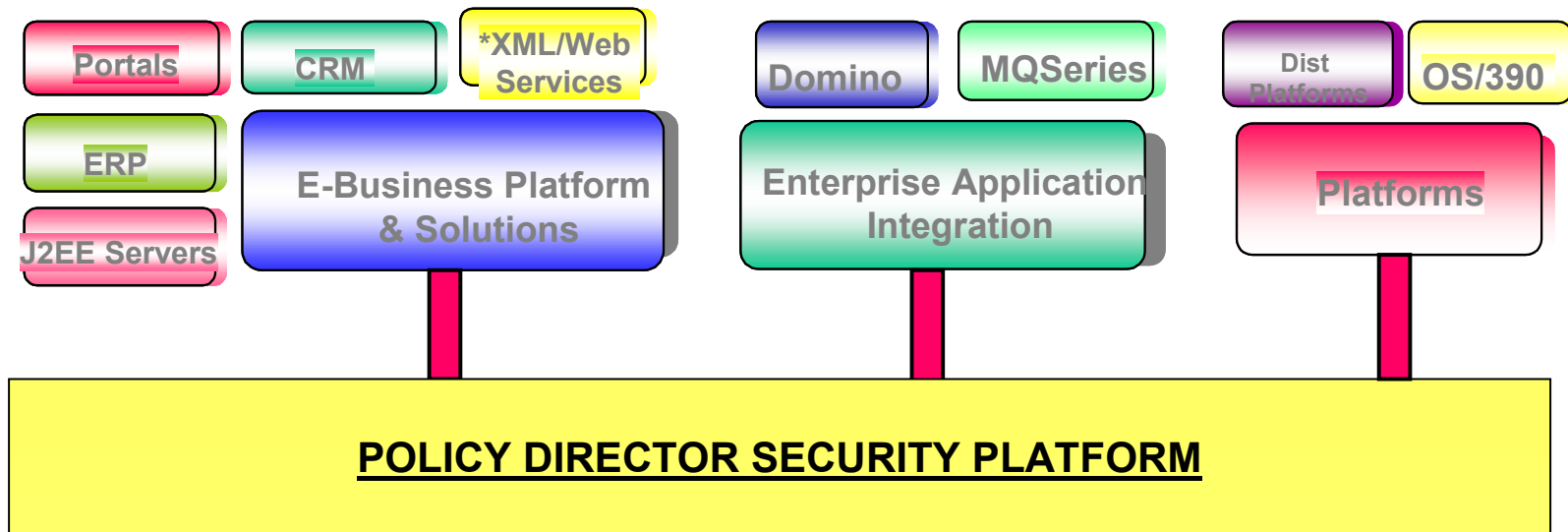
QuickPlace 2.0

- ▶ 100% Browser Based
- ▶ Out of the box functionality
- ▶ Self Service
- ▶ Customizable
- ▶ MS Office Integration
- ▶ Integrated Workflow
- ▶ Integrated Sametime
- ▶ Form / HTML Importing
- ▶ Mail-in application
- ▶ Off-line Services
- ▶ QuickPlace Types

Tivoli Policy Director



Secure, Unified User Experience !!!



Multi-enterprise Web Management Portal !!!



IBM Content Manager

Content Manager

- Full management of process supporting documents & rich media

Archiving

- Enterprise-wide solution for storage, management, and distribution of all types of digital content, including:
 - ▶ Document images,
 - ▶ Electronic office documents,
 - ▶ Audio/video, Text
 - ▶ XML & HTML files
- Designed to manage and administer any file type, providing logically organized central and/or distributed repositories:
 - ▶ File cabinets
 - ▶ Microfilm archives
 - ▶ Multiple, unrelated file servers across an enterprise
- Working to provide integration and backend management to Web Content Management solutions
 - ▶ Interwoven, Open Market, Presence Online, ...
- Supports AIX, Windows NT and 2000

EIP Client Kit for Content Mgr

- **UI to enable users or applications to execute simultaneous search across multiple repositories**
- **Java Beans(TM)-based client toolkit to incorporate Content Manager functionality into applications**
- **Full text search and query by image content optional feature for flexible search capabilities across a broad range of content types**
- **Includes connections to Content Management repositories, including :**
 - ▶ EDMSuite(TM)
 - ▶ Lotus Domino.Doc
 - ▶ DB2(R) Digital Library

Portlet Business Partners

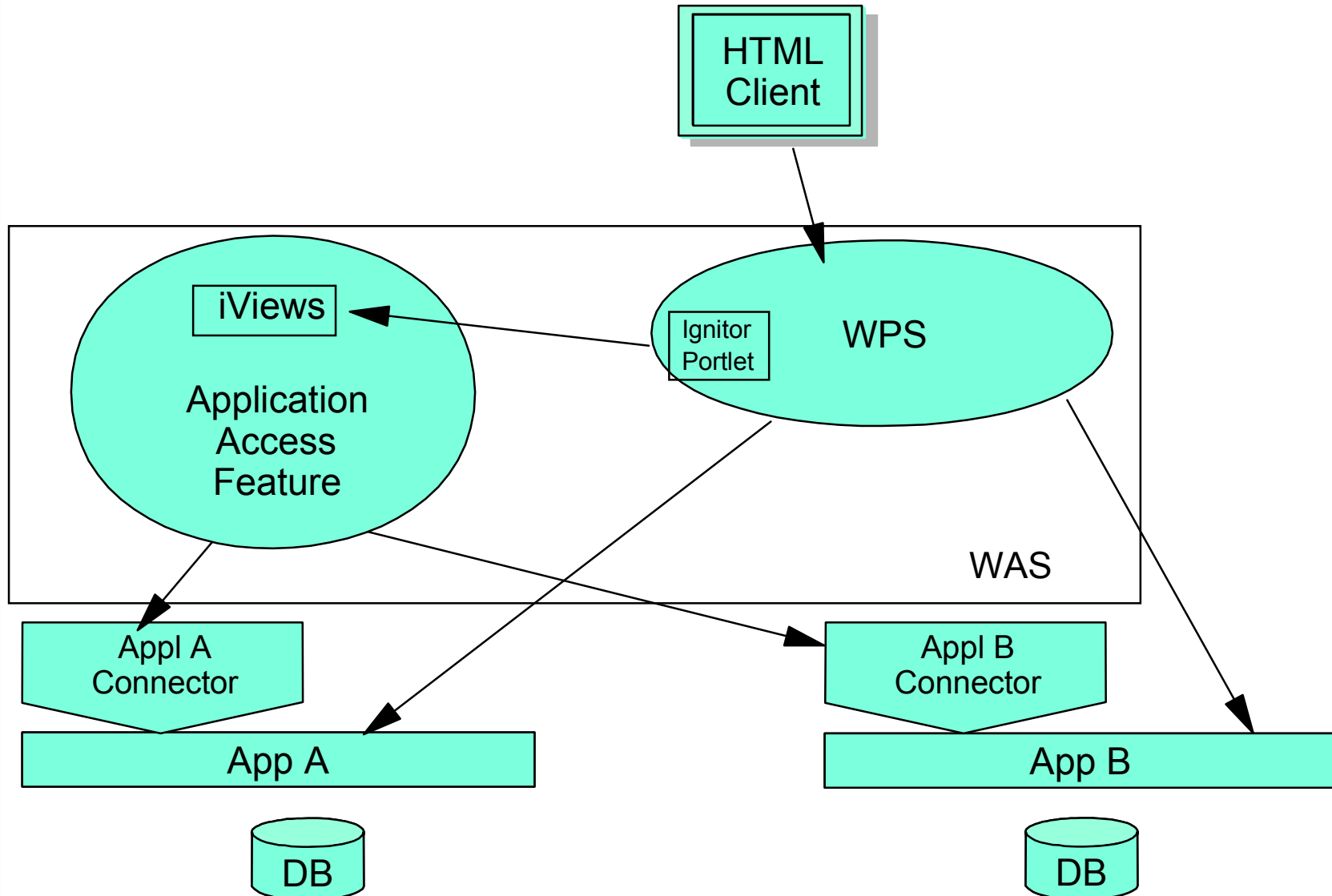
- Hoover's Online
- iSyndicate
- Factica
- ScreamingMedia
- Crystal Decisions
- AltaVista
- Fast Search & Transfer
- Inktomi
- Verity
- Autonomy
- OnePage
- PlumDesign Thinkmap
- Kivera
- Webraska
- Netonomy
- LexisNexis
- Mediapps
- NewsEdge
- YellowBrix
- Atomica
- Correlate
- Interwoven
- InstraNet
- en technologies
- TheBrain Technologies *
- Datamonitor *
- FatWire *
- Documentum *
- Infisys *
- River Run *
- Citrix *

* Announced 10/9/01

Enterprise Applications Access

- **Provide access to 5 key cross industry enterprise applications**
 - ▶ Integrated in to WebSphere Portal through a Portlet
- **6 Offerings, 1 for each applications and an 'enterprise pack'**
 - ▶ SAP Portals iViews for SAP, WebSphere Edition for Multiplatforms
 - ▶ SAP Portals iViews for PeopleSoft, WebSphere Edition for Multiplatforms
 - ▶ SAP Portals iViews for Baan, WebSphere Edition for Multiplatforms
 - ▶ SAP Portals iViews for Siebel, WebSphere Edition for Multiplatforms
 - ▶ SAP Portals iViews for Oracle Financials, WebSphere Edition for Multiplatforms
 - ▶ SAP Portals iViews 5-Pack, WebSphere Edition for Multiplatforms
- **Sold by IBM under reseller agreement established with SAP Portals**
 - ▶ Priced on a per/user annual subscription basis, not part of PPA
 - ▶ Sold in 50 user packs
 - \$1000 for each application pack
 - \$2500 for 5-Pack
 - ▶ Available 11/09/01, electronic only
- **Require the installation of the WebSphere Portal Application Access Feature**
 - ▶ Supported on all WebSphere Portal offerings and WPS 1.2

WPS/SAP iViews Integration Flow



Perficient, Inc.

Perficient: a System Integrator specializing in service including Enterprise Portals, eBusiness Solutions and Web Services

- ➔ - Perficient switched to WPS from Plumtree for their internal B2E portal
- ➔ - Uses experience gained to create new standardized bridge migration offering for existing Plumtree Customers (migrations begin Oct 30)
- ➔ - Perficient expands IBM Partnership by building a WPS practice and adds capability to perform 100+ WPS implementations per year -

"IBM's WebSphere Portal Family addresses Perficient's need for a secure means through which our mobile consulting professionals can communicate, collaborate, and gain access to dynamic information and applications. Perficient is a 'virtual' organization, with our consultants spending the bulk of their time solving problems at client locations.

WebSphere Portal Server helps us build a sense of community among our distributed workforce. For us and for our clients, the IBM WebSphere Portal Server offers all of the essential components for building a highly scalable, collaborative and productive portal. We expect to realize an excellent return on investment and increased partner loyalty as a result of migrating our Plumtree based portal to WebSphere Portal Server."

Sam Fatigato, President , Perficient, Inc.

WebSphere Portal Pre-reqs

- **WebSphere Portal Server requires:**
 - ▶ AIX 4.3.3, or higher, with AIX 4.3.3 PTF levels
 - ▶ Windows NT Server V4.0, SP 6a, or later
 - ▶ Windows 2000 Server or Advanced Server 1.0, or later
 - ▶ Solaris 2.7 at a maintenance level of 4/2000, or later, or Solaris 2.8
 - ▶ There are additional requirements for some of the portlets

- **Browsers**
 - ▶ Navigator 4.7+, Internet Explorer 4.0+, Opera 5.0+
 - ▶ WML 1.1 and 1.2 browsers
 - Nokia 7110
 - Ericsson R320
 - Motorola Timeport P7389i
 - Siemens C35i
 - ▶ PDA versions of HTML and WML browsers
 - ▶ cHTML (for iMode networks)

WebSphere Portal Pre-reqs

■ K-station software requires:

- ▶ Windows NT Server 4.0, SP 6a, or later
- ▶ Windows 2000 Server or Advanced Server 1.0+

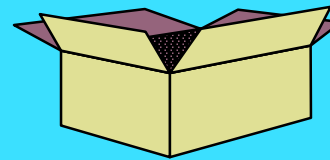
■ SAP Portals iViews software requires:

- ▶ Any of the WebSphere Portal Family V2.1 offerings on Windows NT, Windows 2000, or Solaris
 - AIX support in next release
- ▶ WebSphere Portal Server V1.2 with fix pack 2 on Windows NT, Windows 2000, or Solaris.
 - AIX support in next release
- ▶ The WebSphere Portal Application Access Feature available from <http://www.ibm.com/software/webservers/portal>
- ▶ The "Ignitor" portlet from the Portal Catalog.

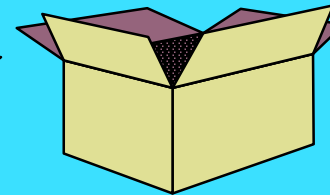
Complementary Products

IBM Portal Strategy

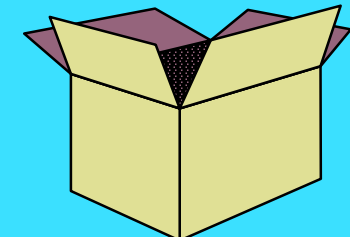
Core Offerings



WP
Enable



WP
Extend



WP
Experience

Add-on examples

- WebSphere Everyplace
 - Wireless network
- Enterprise Information Portal
 - Structured and unstructured data & analysis
- Enterprise Application Integration
 - B2B Integrator, MQSeries Integrator
- BackWeb (partner)
 - Proactive Rich Media Push and disconnected Portal
- Sametime & QuickPlace
 - Full product license capabilities for use with WP Extend Offering
- WebSphere Edge Server
 - caching for responsiveness for large distributed deployments
- Discovery Server
 - Search, Categorization, Expertise, Content metrics

Additional Resources

■ Portal sales support web site

- ▶ <http://swpi.boulder.ibm.com/smi.nsf/docs-us/ibmwebsphereportalfamilyformultiplatformsversion2.1overview?opendocument>
- ▶ Also available to Business Partners on SMI

■ Portal technical support web site

- ▶ <http://w3.transarc.ibm.com/websphere/stew2001/uex>

■ Portal Family product web site

- ▶ <http://www-4.ibm.com/software/info/websphere/solutions/offerings/portalfamily.html>

■ K-station product web site

- ▶ <http://www.lotus.com/k-station>

■ Lotus sales support

- ▶ <http://w3.lotus.com/knac>

■ Portlet catalog

- ▶ <http://www.ibm.com/software/webservers/portal/portlets>