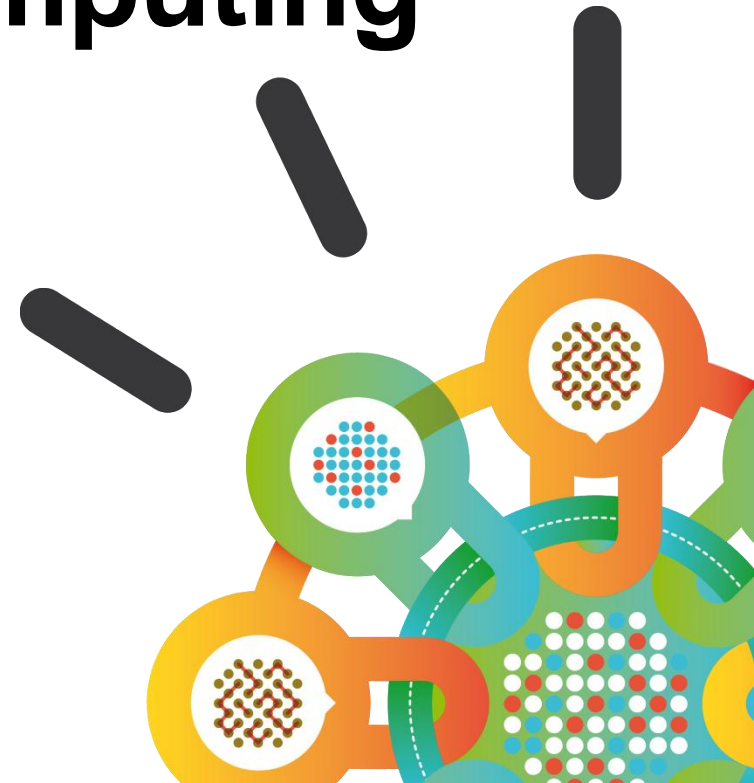


Security Intelligence.
Think Integrated.

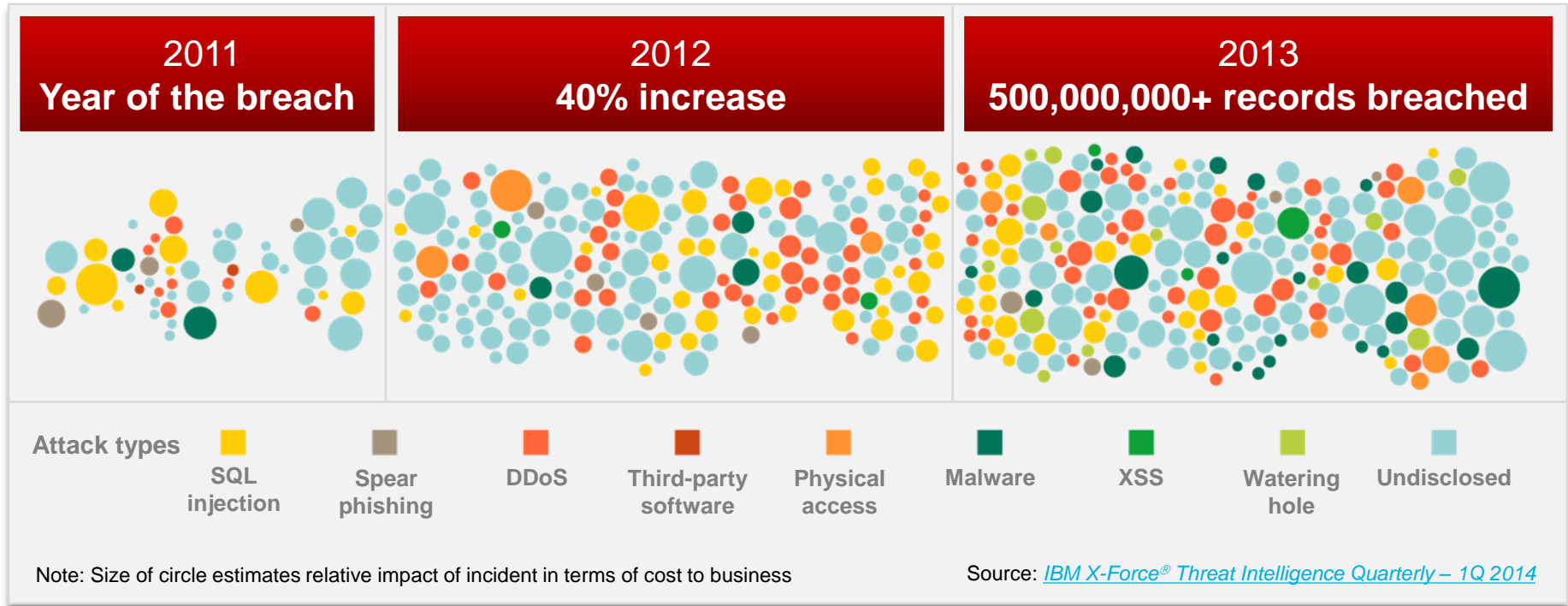
A New Era of Security for a New Era of Computing

Marc van Zadelhoff
VP, Strategy, Marketing and Product Management
IBM Security Systems

October, 2014



Sophisticated attackers break through safeguards every day



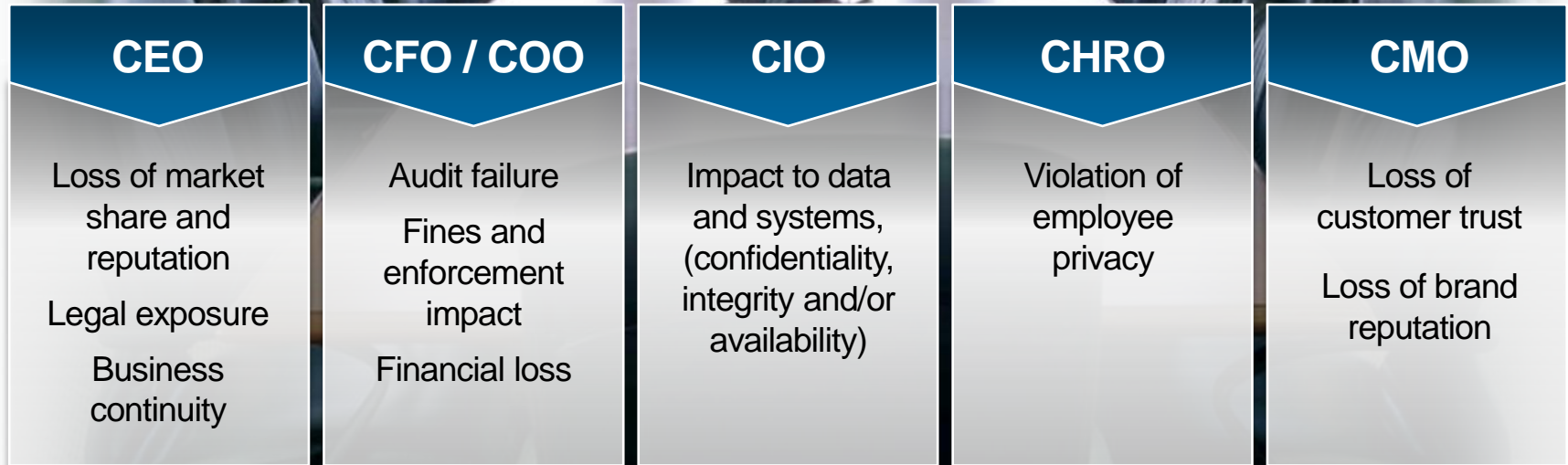
61% of organizations say **data theft and cybercrime** are their greatest threats

2012 IBM Global Reputational Risk & IT Study

\$3.5M+ average cost of a **data breach**

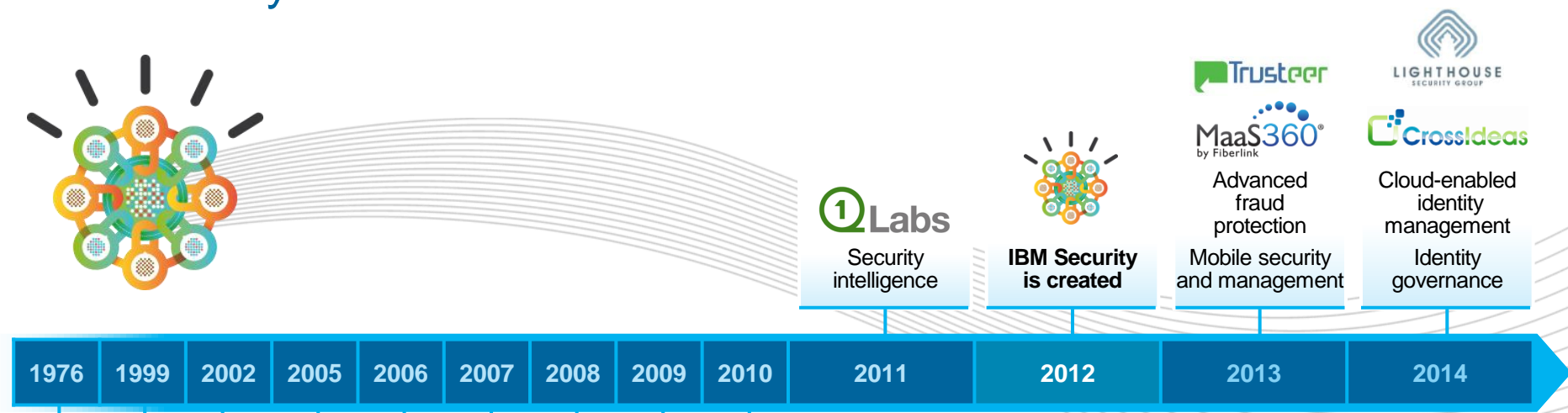
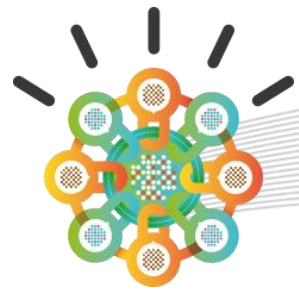
2014 Cost of Data Breach, Ponemon Institute

Security leaders are more accountable than ever before



Your board and CEO demand a strategy

IBM Security timeline



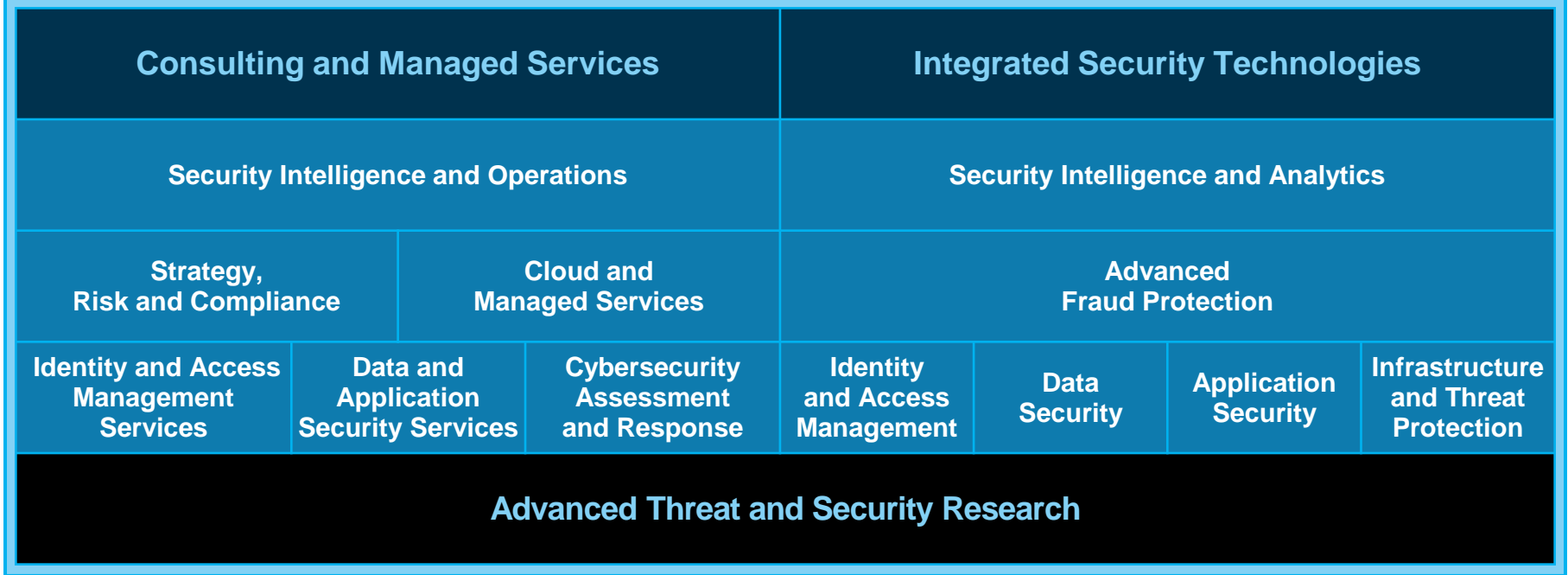
1976	1999	2002	2005	2006	2007	2008	2009	2010	2011	2012	2013	2014
------	------	------	------	------	------	------	------	------	------	------	------	------

<p>Mainframe and server security</p>	<p>Identity management Directory integration</p>	<p>Security services and network security</p>	<p>Enterprise single-sign-on</p>	<p>Endpoint management and security Information and analytics management</p>
<p>Access management</p>	<p>Service oriented architecture (SOA) management and security</p>	<p>Application security Risk management Data management</p>	<p>Database monitoring and protection Application security</p>	

IBM Security Investment

- 6,000+ IBM Security experts worldwide
- 1,700+ IBM Security patents
- 4,000+ IBM Managed Security Services clients worldwide
- 25 IBM Security labs worldwide

IBM Security Portfolio



Key Security Trends



Advanced Threats



Cloud Adoption



Mobile Concerns



Compliance Mandates



Skills Shortage

IBM Security today




- Top 3** enterprise security software vendor in total revenue
- 13** industry analyst reports rank IBM Security as a **LEADER**
- 133** countries where IBM delivers managed security services
- 10K⁺** clients protected *including...*
- 24** of the top 33 banks in Japan, North America, and Australia

Top Customer Conversations

- 1 Security strategy**
- 2 Stopping attackers**
- 3 Crown jewels**
- 4 Cloud and mobile**



***1. Yesterday's
security
does not work***



83% of enterprises have difficulty finding **security skills**

2012 ESG Research

49% of IT executives have no measure of **security effectiveness**

2012 Forrester Research Study

31% of IT professionals have **no risk strategy**

2013 Global Reputational Risk & IT Study, IBM

1 Optimize your security program



Assess and transform your security maturity

Benchmark your security maturity versus peers and define a roadmap for the future

- IBM Security Essentials and Maturity Consulting
- IBM Security Strategy and Planning Services

Build a next generation security operations capability

Treat security as a path to reduce risk and grow your business

- IBM Security Intelligence and Operations Consulting
- IBM Managed Security Services
- IBM Security Portfolio of Solutions

Get help from the experts

Engage professionals to hunt the attackers, deploy solutions or help run operations

- IBM Security Consulting and Systems Integration
- IBM Managed Security Services
- IBM X-Force and Trusteer Research

A financial services firm teams with IBM to build its first SOC

Optimize Your Security Investments

Identified and blocked

650+

suspicious incidents
in the first 6 months
of SOC operations




Business Challenge

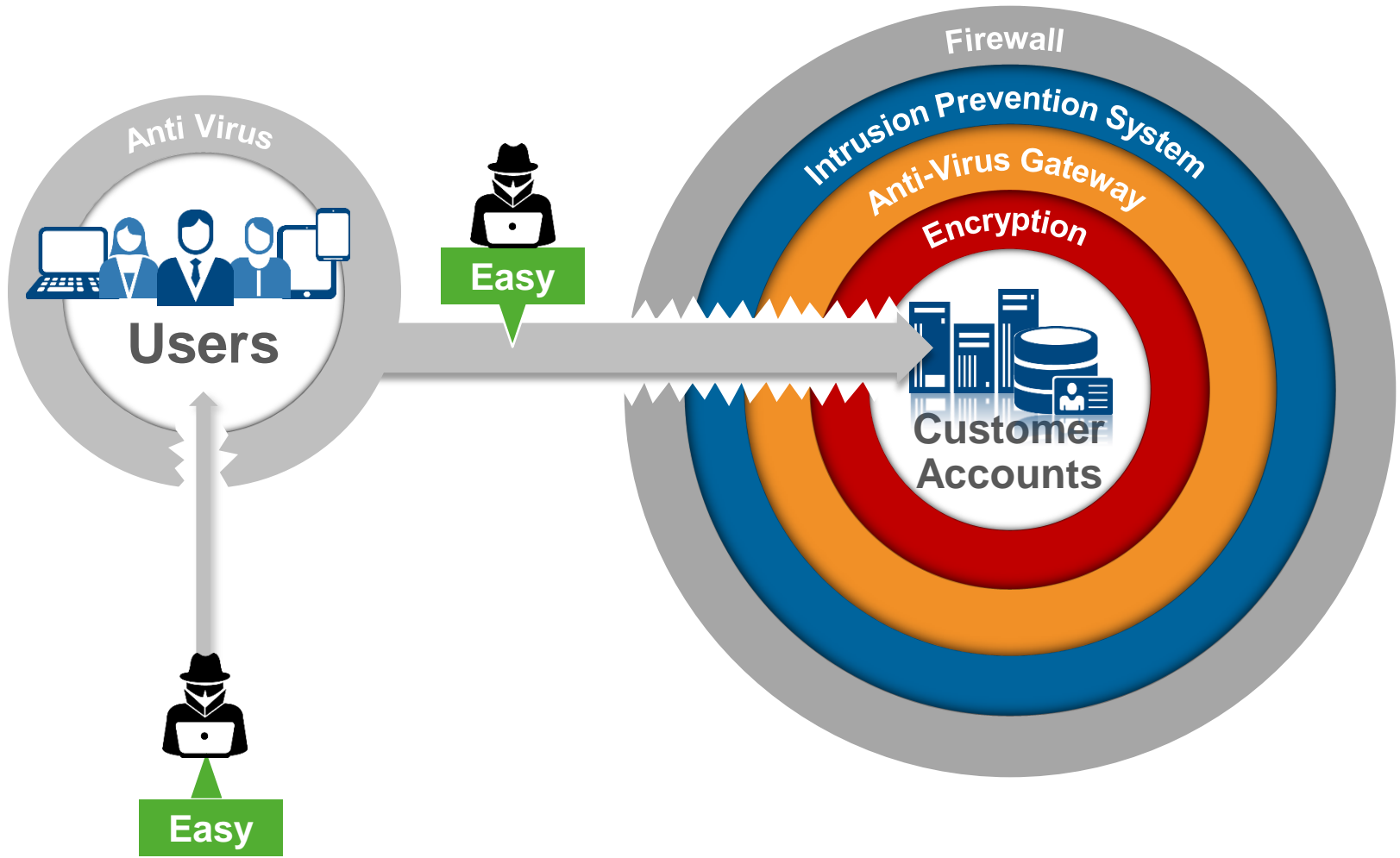
- The bank did not have the security skills and resources to build its first SOC within the aggressive milestones set by their Board
- Wanted global protection for 16,000,000 accounts across 44 countries

IBM Security Solution benefits

- Provides automated, real-time advanced analytics to evaluate 13M+ events per day from 400K+ assets and 28K+ active log sources
- Provides 24x7 SOC management and incident response support at ~\$2M lower cost than in-house management

A person is seen from behind, sitting at a desk with two laptops. The background is a dark green field filled with floating, semi-transparent lines of code, creating a digital or hacker atmosphere. The person is wearing a light blue shirt and has their hands on the keyboards of the laptops.

2. Attackers break through every day



2 Stop advanced threats



Detect advanced threats with security intelligence

Gain visibility and respond to breaches faster with big data analytics

- IBM QRadar Security Intelligence Platform
- IBM Managed SIEM and CyberThreat Intelligence
- Emergency Response Services

Protect against fraud and targeted attacks

Stop sophisticated threats in real-time with next-generation defenses

- IBM Threat Protection System
- IBM Trusteer Cybercrime Solutions
- IBM Managed Security Services

Deploy integrated security

Reduce operating costs and complexity with integrated controls and managed services

- IBM Security Portfolio of Solutions
- IBM Managed Security Services
- IBM X-Force® Research and Dynamic Threat Intelligence

An international energy company identifies critical events to investigate

Stop Advanced Threats with Security Intelligence

An international energy firm analyzes

2 billion

events per day to find

20 – 25

potential offenses to investigate



Business Challenge

- Reducing huge number of events to find the ones that need to be investigated
- Automating the process of analyzing security data

IBM Security Solution Benefits

- Combined analysis of historical data with real-time alerts to gain a 'big picture' view and uncover patterns of unusual activity humans miss
- Immediately block suspected traffic

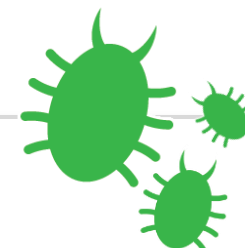
3. Criminals want your valuable data



94% of breaches involve database servers



85% of organizations were unaware of the compromise for weeks to months



\$188

Average cost of a data breach

\$5.4M

Per record cost of a data breach

3 Protect critical assets



Use context-aware and role-based controls to prevent unauthorized access

Validate “who is who” across the enterprise and the cloud, help defend against unauthorized access

- IBM Identity and Access Manager
- IBM Privileged Identity Manager
- IBM Cloud Identity Services

Identify and protect your “crown jewels”

Discover and classify critical data assets; monitor who is accessing that data and from where

- IBM Critical Data Protection Program
- IBM InfoSphere Guardium®
- IBM Key Lifecycle Manager

Manage application security risk

Discover and classify applications, help identify and remediate vulnerabilities, address security from day one

- IBM AppScan®
- IBM AppScan® for Mobile
- IBM Secure Engineering and Application Security Assessment

A leading provider of information technology, consulting, and business process outsourcing services safeguards privileged IDs

Protect Against Unauthorized Access

IBM Security
Privileged Identity Manager for
500
privileged administrator users



Business Challenge

- Increased security risks resulting from limited privileged activity monitoring
- Exposure to insider threat due to enterprise-wide sharing of privileged IDs
- Compliance issues due to poor privileged user management and lack of audit trail for privileged user access

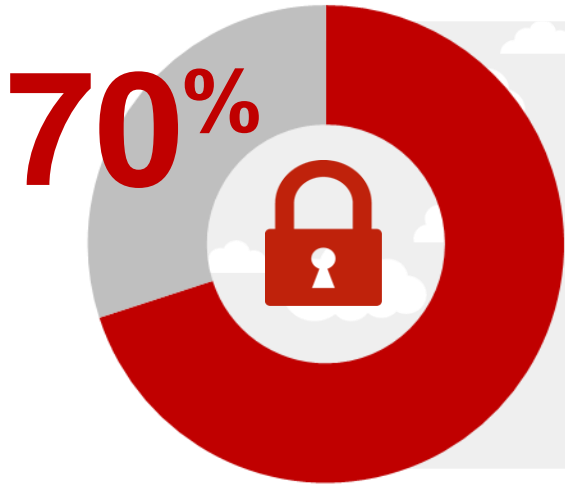
IBM Security Solution Benefits

- Streamlined and automated privileged user management
- Audit trail and monitoring of privileged access to all critical systems
- Safe management of shared privileged IDs and their passwords
- Full support of periodic privileged access recertification for audit and compliance purposes

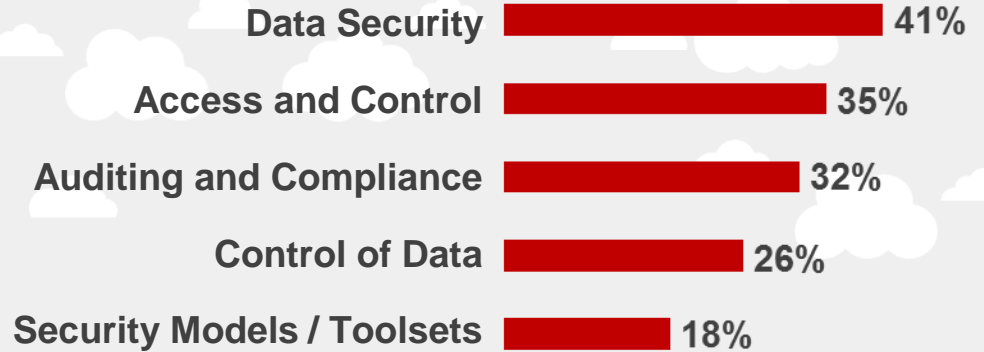
4. Cloud and mobile bring new risks



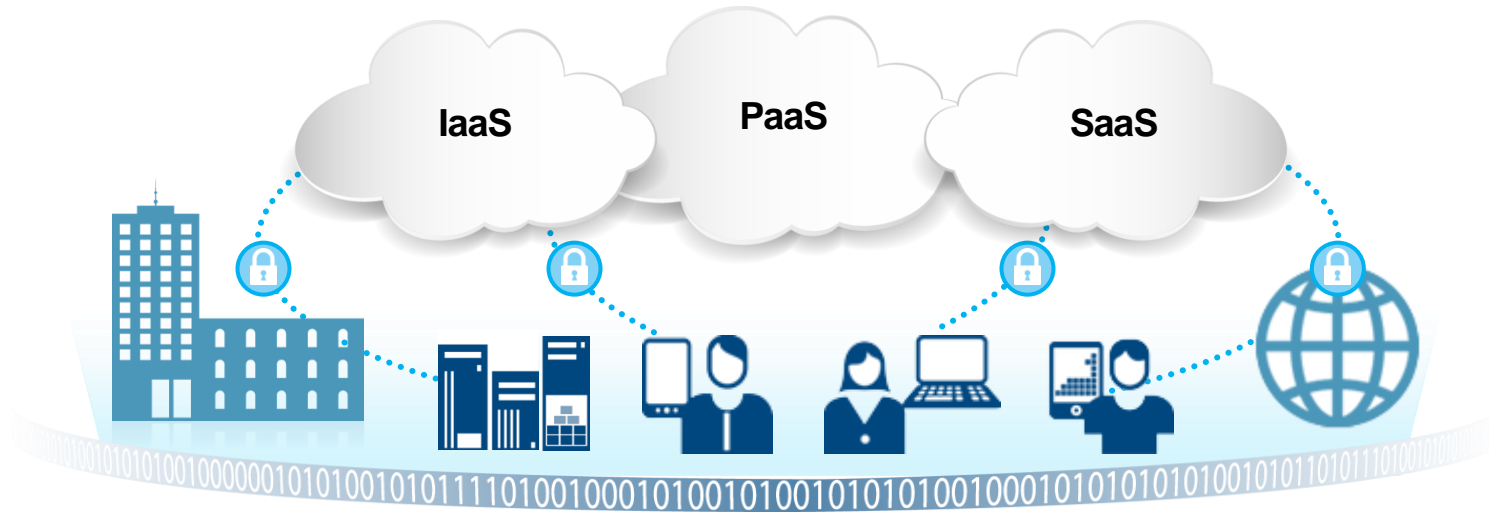
SECURITY
#1 inhibitor
with Cloud Computing



Top 5
security concerns
with Cloud Computing



4 Safeguard cloud and mobile



Maintain cloud visibility and control

Harden workloads and monitor attack activity while supporting compliance in the cloud

- IBM Security Cloud Solutions
- IBM Managed SIEM

Help protect the mobile enterprise

Protect devices, content, applications and transactions; address security from day one

- IBM MobileFirst Security Solutions
- IBM Trusteer Mobile Fraud Solutions
- Fiberlink® Mobile Security Solutions
- Mobile Application and Embedded Device Security

Adopt security-as-a-service

Leverage the ease-of-use, global availability and flexibility of cloud-based security

- IBM Cloud-based Security Services
- IBM Managed Web Defense
- IBM Trusteer Advanced Fraud Protection

Cloud-delivered IAM services provide a Fortune 10 client with a strategic business-to-customer (B2C) solution

Cloud-delivered Identity and Access Management (IAM)

Help secure access for
8.5M internal users
and external
automobile customers

Help secure access for
50K union workers to
manage their own
identities, according to union contract



Business Challenge

- Users need multiple discrete logins / passwords to access and use different web properties
- Unable to identify and track customers to enable development of targeted offers and a more personalized web experience
- Lack of internal security skills for deploying a strategic IAM solution in house

IBM Security Solution Benefits

- **Simplified web / mobile experience** via IAM integration with cloud-based social identities
- A single login providing access to a **more personalized online experience**
- **Reduced time to market** for realizing **IAM as a business enabler**
- **Agile and scalable** managed service that allows the client to “turn-on” and utilize additional services as the initiative expands globally

A global bank enables security-rich mobile access for millions of users

Safeguard Mobile Deployments

North American entity protects user access to mobile and web channels for

10,000
internal users

Mobile Users



Mobile Devices

Web and Mobile Apps

Business Challenge

- Protect employee and contractor access to web and mobile applications
- Roll out new application to customers and help protect access for mobile devices

IBM Security Solution Benefits

- Centralized user access control across web and mobile channels
- Reduced IT cost with self-care, single sign-on and session management
- Introduced risk-based access and multi-factor authentication for 10M+ customers

IBM Security has global reach



IBM Security by the Numbers

133+ monitored countries (MSS)

27000000000+ endpoints protected

3300+ service delivery experts

150000000000+ events managed per day

IBM X-Force® delivers expert analysis and threat intelligence



Backdoors
Botnets
Buffer Overflow Attacks
Client Side Attacks
Cross-site Scripting (XSS)
Distributed Denial of Service (DDoS)
Exploit Toolkits
Malicious Content
Peer-to-Peer Networks
Protocol Tunneling
Reconnaissance
SQL Injection
Trojans
Worms

*Sharing real-time and
anonymized threat intelligence*



**IBM Security Operations Centers
and Security Products**

X-Force Helps Keep Customers Ahead of the Threat

- Cataloging, analyzing and researching vulnerabilities since 1997
- Providing zero-day threat alerts and exploit triage to IBM customers worldwide
- Building threat intelligence from collaborative data sharing across thousands of clients
- Analyzing malware and fraud activity from 270M+ Trusteer-protected endpoints

1

**Optimize your security plan
and get help from experts**

2

**Stop advanced threats
with security intelligence**

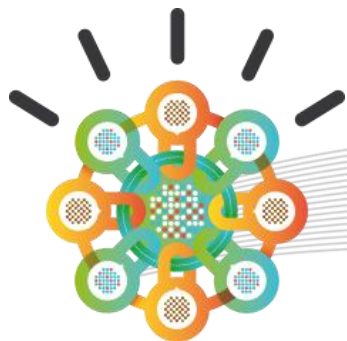
3

**Use a risk-based approach
to protect your most valuable assets**

4

**Employ cloud and mobile
to improve security**

Learn more about IBM Security



IBM Security
Intelligence. Integration. Expertise.



Visit our website
[IBM Security Website](#)



Watch our videos
[IBM Security YouTube Channel](#)



Read new blog posts
[SecurityIntelligence.com](#)



Follow us on Twitter
[@ibmsecurity](#)

Statement of Good Security Practices: IT system security involves protecting systems and information through prevention, detection and response to improper access from within and outside your enterprise. Improper access can result in information being altered, destroyed, misappropriated or misused or can result in damage to or misuse of your systems, including for use in attacks on others. No IT system or product should be considered completely secure and no single product, service or security measure can be completely effective in preventing improper use or access. IBM systems, products and services are designed to be part of a lawful, comprehensive security approach, which will necessarily involve additional operational procedures, and may require other systems, products or services to be most effective. IBM DOES NOT WARRANT THAT ANY SYSTEMS, PRODUCTS OR SERVICES ARE IMMUNE FROM, OR WILL MAKE YOUR ENTERPRISE IMMUNE FROM, THE MALICIOUS OR ILLEGAL CONDUCT OF ANY PARTY.

Thank You

www.ibm.com/security



© Copyright IBM Corporation 2014. All rights reserved. The information contained in these materials is provided for informational purposes only, and is provided AS IS without warranty of any kind, express or implied. IBM shall not be responsible for any damages arising out of the use of, or otherwise related to, these materials. Nothing contained in these materials is intended to, nor shall have the effect of, creating any warranties or representations from IBM or its suppliers or licensors, or altering the terms and conditions of the applicable license agreement governing the use of IBM software. References in these materials to IBM products, programs, or services do not imply that they will be available in all countries in which IBM operates. Product release dates and/or capabilities referenced in these materials may change at any time at IBM's sole discretion based on market opportunities or other factors, and are not intended to be a commitment to future product or feature availability in any way. IBM, the IBM logo, and other IBM products and services are trademarks of the International Business Machines Corporation, in the United States, other countries or both. Other company, product, or service names may be trademarks or service marks of others.