

BusinessConnect

A New Era of Smart

June 12 2014

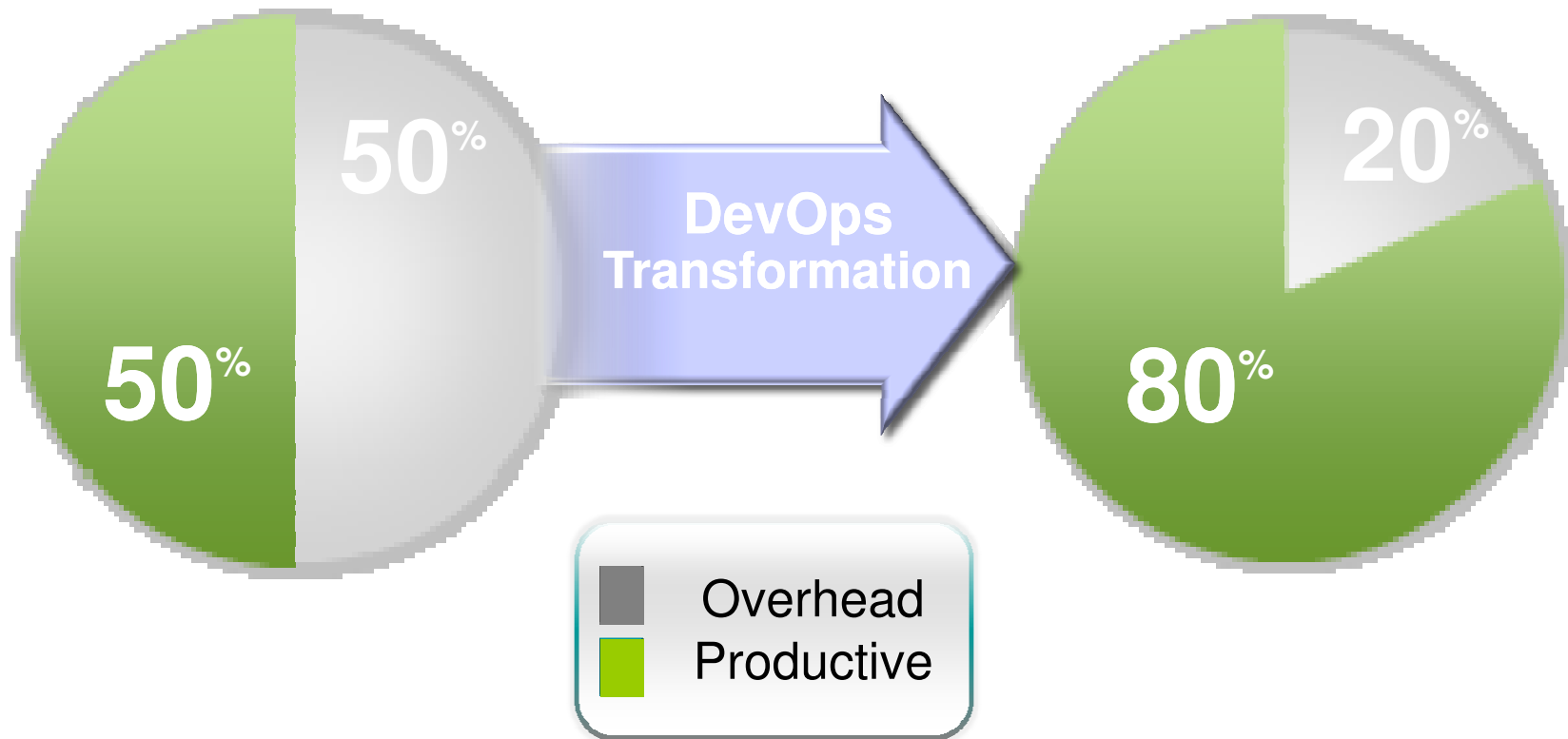
Assess and Improve your DevOps Maturity

Shmuel Bashan
Solution Architect
Rational WW Solution Delivery Team

bashansh@il.ibm.com



Approaching from a Lean Perspective



Hidden Factory= additional value you could create if you eliminated waste and redirected those resources at innovation



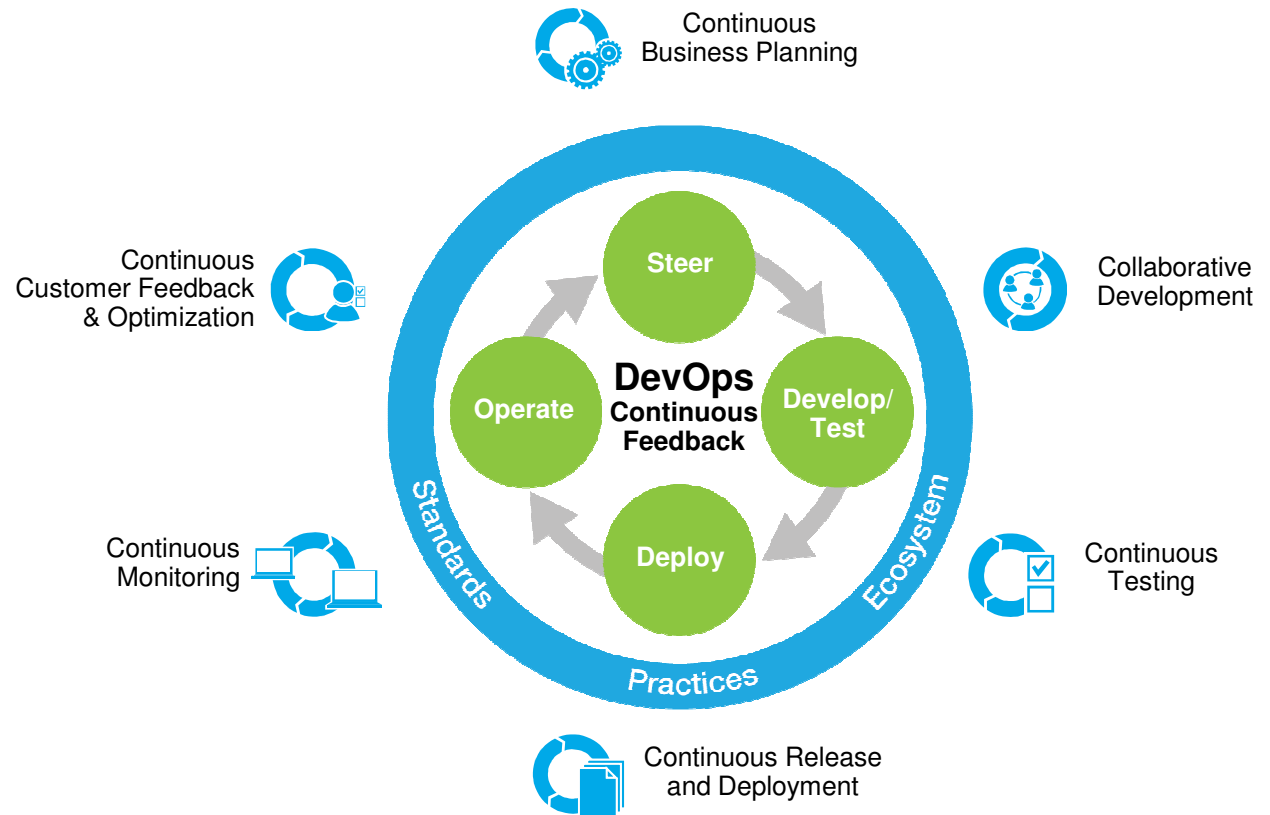
IBM DevOps point of view

Enterprise capability for continuous software delivery that enables organizations to seize market opportunities and reduce time to customer feedback

Accelerate software delivery – for faster time to value

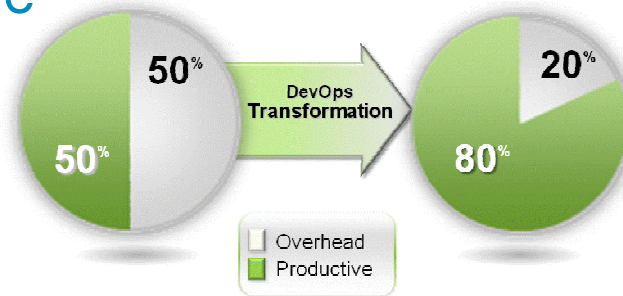
Balance speed, cost, quality and risk – for increased capacity to innovate

Reduce time to customer feedback – for improved customer experience



Our DevOps POV is resonating with clients and they are delivering **measurable business outcomes with DevOps**

DevOps Delivery Pipeline



Development processes too structured and excess documentation

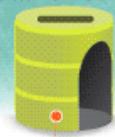
Manual deployments taking excess time and causing error

Resource monitoring has NO direct feedback to dev

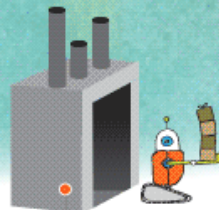
Planning



Development



SCM



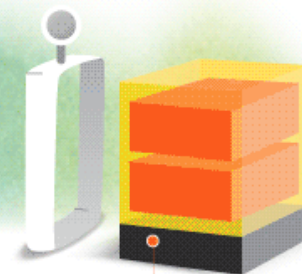
Build



SIT



UAT



PROD

Monitoring

Priority for DevOps Improvements

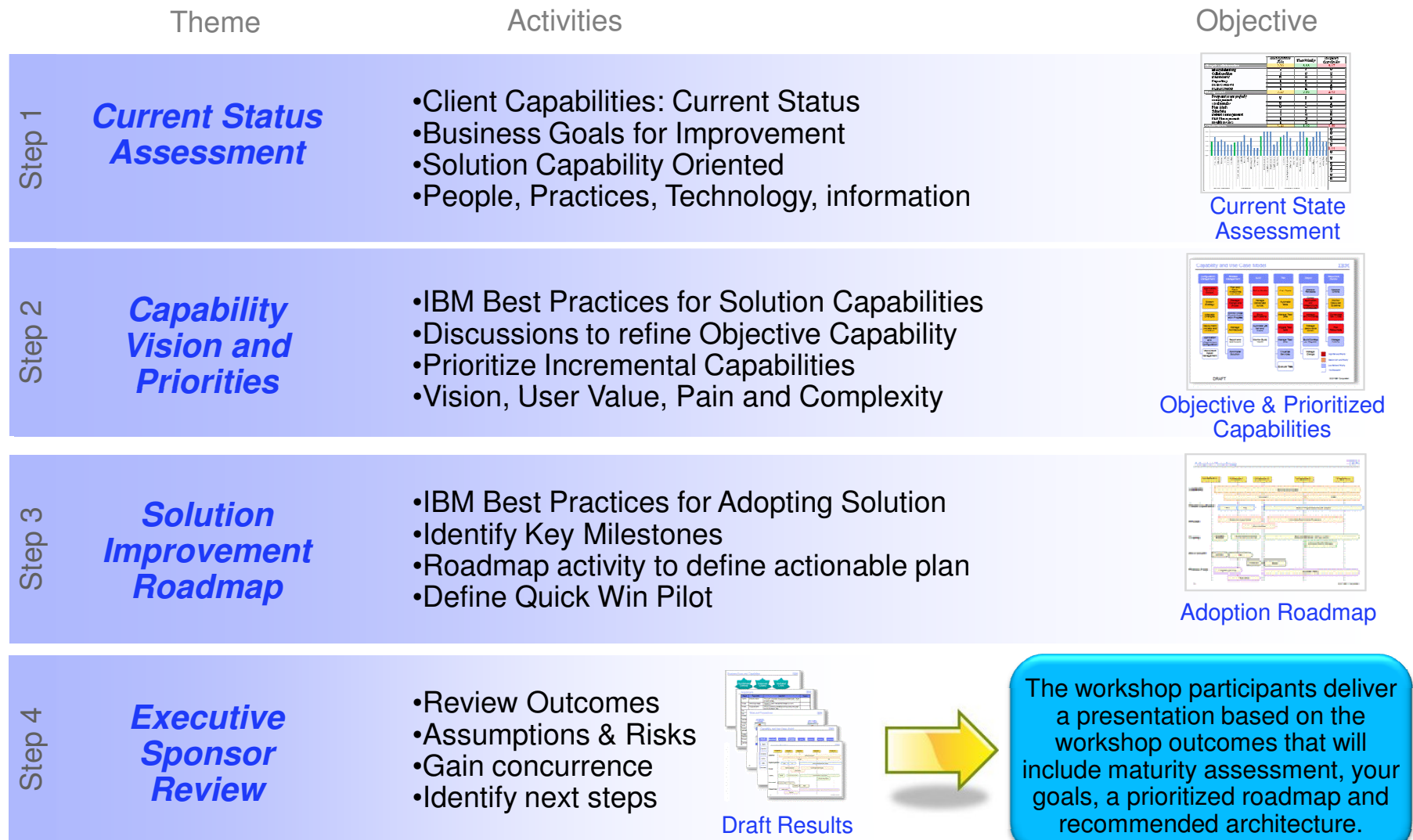


IBM DevOps Practice Proficiency model

	Steer	Develop / Test	Deploy	Operate
Scaled	<ul style="list-style-type: none"> Define release with business objectives Measure to customer value 	<ul style="list-style-type: none"> Improve continuously with development intelligence Test Continuously Leverage Quality Trends 	<ul style="list-style-type: none"> Manage environments through automation Provide self-service build, provision and deploy 	<ul style="list-style-type: none"> Automate problem isolation and issue resolution Optimize to customer KPIs continuously
Reliable	<ul style="list-style-type: none"> Plan and source strategically Dashboard portfolio measures 	<ul style="list-style-type: none"> Manage data and virtual services for test Deliver and integrate and build continuously 	<ul style="list-style-type: none"> Standardize and automate cross-enterprise Automate patterns-based provision and deploy 	<ul style="list-style-type: none"> Optimize applications Use enterprise issue resolution procedures
Repeatable	<ul style="list-style-type: none"> Link objectives to releases Centralize Requirements Management Measure to project metrics 	<ul style="list-style-type: none"> Link lifecycle information Deliver and build with test Automate testing Embed Quality Reporting 	<ul style="list-style-type: none"> Plan departmental releases and automate status Automated deployment with standard topologies 	<ul style="list-style-type: none"> Monitor using business and end user context Centralize event notification and incident resolution
Practiced	<ul style="list-style-type: none"> Document objectives locally Manage department resources 	<ul style="list-style-type: none"> Manage Lifecycle artifacts Schedule SCM integrations and automated builds Test following construction 	<ul style="list-style-type: none"> Plan and manage releases Standardize deployments 	<ul style="list-style-type: none"> Monitor resources consistently Collaborate Dev/Ops informally



Discovery and Deployment Planning Agenda Overview



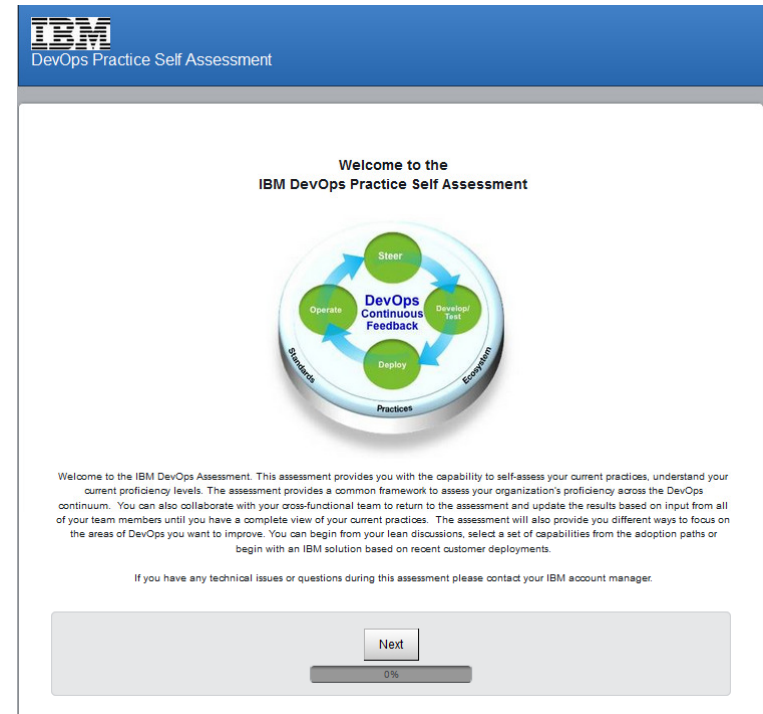
DevOps Practices Self Assessment

<https://ibm.biz/devops-practices-assessment>

Select up to TWO adoption paths.

- Steer
- Develop / Test
- Deploy
- Operate

Select the specific practices.



Steer

- Measure
- Collaborate
- Strategy
- Requirements
- Management
- Prioritization

Develop / Test

- Design
- Construct
- Configuration Management
- Build
- Test
- Assess Quality

Deploy

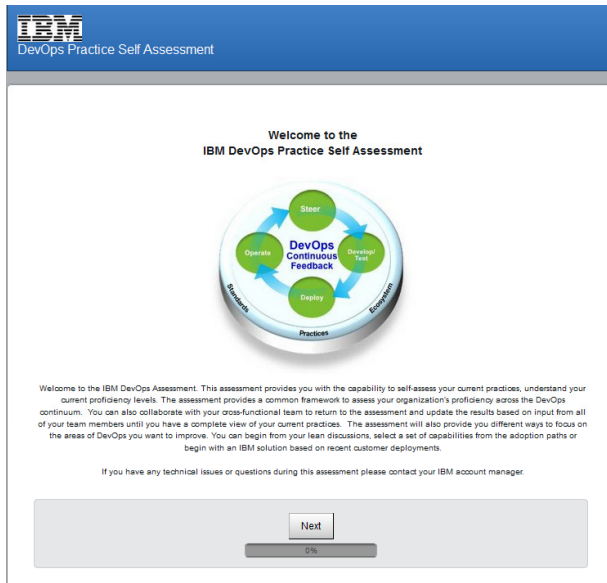
- Deployable Asset Management
- Manage Change
- Deploy Applications
- Prepare Release
- Provision
- Manage Release

Operate

- Monitor Applications
- Monitor Experience
- Events
- Optimize Applications
- Optimize Engagement



Web-based Self or directed assessment tool for clients



DIY
Solution

Crash reporting is incorporated into mobile applications to provide basic measures for quality assessment. Crash reporting is used to improve basic stability of the applications.

Series of practice statements with three basic responses

- Yes
- Partial
- No

Build Assessment Result

- Scaled *E2E analytics for continuous improvement*
- Reliable *Practice automation is self-service, segments measured*
- Consistent** *Practices consistently automated and measured*
- Practiced *Practices defined, known and used*

Configuration Management Assessment Result

- Scaled *E2E analytics for continuous improvement*
- Reliable *Practice automation is self-service, segments measured*
- Consistent *Practices consistently automated and measured*
- Practiced** *Practices defined, known and used*

Test Assessment Result

- Scaled *E2E analytics for continuous improvement*
- Reliable *Practice automation is self-service, segments measured*
- Consistent *Practices consistently automated and measured*
- Practiced** *Practices defined, known and used*

Immediate Feedback:

1. Practice area proficiency
2. download/email pdf of your answers to you/IBMer
3. Potential solutions

You may be interested in reviewing our approach to [Accelerating Feedback with Early Testing](#)

Here is a recent client experience with these practices

Your *practice proficiency improvement goals* for this solution would be:

Configuration Management	Build
Scaled <i>E2E analytics for continuous improvement</i>	Scaled <i>E2E analytics for continuous improvement</i>
Reliable <i>Practice automation is self-service, segments measured</i>	Reliable <i>Practice automation is self-service, segments measured</i>
Consistent <i>Practices consistently automated and measured</i>	Consistent <i>Practices consistently automated and measured</i>
Practiced <i>Practices defined, known and used</i>	Practiced <i>Practices defined, known and used</i>

Deploy Applications	Test
Scaled <i>E2E analytics for continuous improvement</i>	Scaled <i>E2E analytics for continuous improvement</i>
Reliable <i>Practice automation is self-service, segments measured</i>	Reliable <i>Practice automation is self-service, segments measured</i>
Consistent <i>Practices consistently automated and measured</i>	Consistent <i>Practices consistently automated and measured</i>

Discovery and Deployment Planning Workshop



IBM will collaborate with you to understand your current situation, goals and constraints. The Assessment and Planning Workshop will aim to capture sufficient information to make specific recommendations for improvement and implementation.



3 Days of our client's time solves three months of planning

- Intended Audience:
 - Key leadership from practice areas and stakeholder organizations
- Value Proposition
 - Clear recommendations for capability improvements aligned to your business goals
 - Initial Architecture
 - Adoption roadmap based on proven best practices
- Activities
 - Workshop planning
 - Assessment Workshop
 - Collaborative discussion on current status, future goals and adoption requirements
- Deliverables
 - Capability Improvement Recommendations
 - Architecture
 - Adoption Roadmap
- Resources
 - Typically 2 IBM Consultants



More Information

- IBM's approach to DevOps <https://ibm.biz/BdRSTS>
- Adopting IBM's approach: <https://ibm.biz/BdDaMe>

- A four part blog post on "getting started with DevOps" that explains the DevOps discovery and deployment planning workshop
 - Step 1: <https://ibm.biz/BdRywU>
 - Step 2: <https://ibm.biz/BdRqpT>
 - Step 3: <https://ibm.biz/BdRnWi>
 - Step 4: <https://ibm.biz/BdRn7u>

