

Quickly identify z/OS software inventory and use to reduce costs and minimize compliance risk



Tivoli software

IBM Tivoli Asset Discovery for z/OS

Highlights

- **Automatically discovers and identifies IBM and third party software running on the z/OS platform**
- **High speed scanning and in house application tagging ensures that you have a complete inventory of everything on your system without a lot of overhead**
- **Monitors software usage and related growth to proactively plan for future capacity needs**
- **Generates interactive reports that provide convenient hyperlink drill down for more details**
- **Lower costs by removing unused and obsolete software**
- **Use with IBM Tivoli Asset Management for IT to manage the full lifecycle of hardware and software assets including software license and contracts management**
- **Add IBM Tivoli Asset Discovery for Distributed for an end-to-end software asset management solution**

As the mainframe continues to take on new workloads and other key business applications identifying what software you have and who is using it can be challenging. If you don't have the resources to properly identify your software and usage you may have unanticipated software overage charges or you may be wasting precious budget dollars on software that no one is using. In order to get the most of your z/OS® software budget you need to inspect z/OS product use trends by automating the software discovery process. IBM® Tivoli® Asset Discovery for z/OS provides discovery, monitoring and reporting to understand z/OS product and application usage.

IBM Tivoli Asset Discovery for z/OS helps you contain costs and plan effectively for the future by automatically detecting software running on your mainframe systems. Detailed use reports can then provide the insight that helps you eliminate redundant or

unused applications for immediate cost savings. And when you avoid large, unexpected fees, you can redirect those funds to new software initiatives that deliver substantial value to business units and other customers.

To link software use with corresponding licenses and contracts, Tivoli Asset Discovery for z/OS integrates with IBM Tivoli Asset Management for IT. This product helps you manage the complete IT asset management lifecycle from requisition to disposal. It helps you reconcile software licenses with the discovery and use data from Tivoli Asset Discovery for z/OS to facilitate sound financial decisions.

Extend these benefits of software inventory and use management across your entire enterprise by adding IBM Tivoli Asset Discovery for Distributed. Together, Tivoli Asset Discovery for z/OS, Tivoli Asset Management for IT and Tivoli Asset Discovery for Distributed enable you to deploy a robust, end-to-end software asset management solution.

Discover what you really have and who is using it

Today's companies have few resources to gauge actual software use or related charges within their z/OS environment—and end up paying the price. Tivoli Asset Discovery for z/OS

helps you overcome this problem by automatically discovering instances of software running on your z/OS systems. It also gives you the advantage of viewing actual use trends by user, department, machine and logical partition (LPAR).

In order to maintain an accurate inventory, discovery is performed at the product release level using a high speed scanner which aggregates the information to distinguish product versions. Then the discovery match engine uses product module signatures to further identify specific IBM and third party products. Lastly customers also have the ability to use the tagging utility to track usage and deployment information for their own applications and maintenance levels. The result is an accurate inventory of everything on your z/OS platform.

Monitoring usage

Once you have identified what software you have, you need to monitor usage to help you understand if you are making the most of your software investments. Tivoli Asset Discovery for z/OS provides key usage details such as:

- **Which products are installed**
 - *Vendors, Product Titles, Features, Modules*
 - *Versions, Releases, Maintenance levels*
 - *PID, S&S PID, Entitlement ID*

- **Where the products are installed & used**
 - *Regions, Machines, LPARs, SMF ID, Storage Volumes, Datasets*
- **Who is using the products**
 - *Job names, Users, Account Codes*
- **When the products are being used**
 - *Monthly periods*
- **What products can potentially be consolidated**
 - *Trend graphs with drill down to show who is using the product*

Interactive detailed reports show you where you can save money.

Tivoli Asset Discovery for z/OS provides powerful drill down interactive reports that can show which products are no longer being used. These reports can be an important tool in vendor negotiations. Finally the interactive reports can support your consolidation projects. Using the tool you can make informed decisions about how to:

- **Consolidate the number of products:**
 - *Consolidate similar products*
 - *Consolidate product versions*
- **Consolidate the number of machines covered by the product licenses:**
 - *Consolidate product usage to LPARs that are optimal for SCRT billing*
 - *Consolidate products across systems that have been brought together from outsourcing or company acquisitions*

Optimize IT planning and upgrading

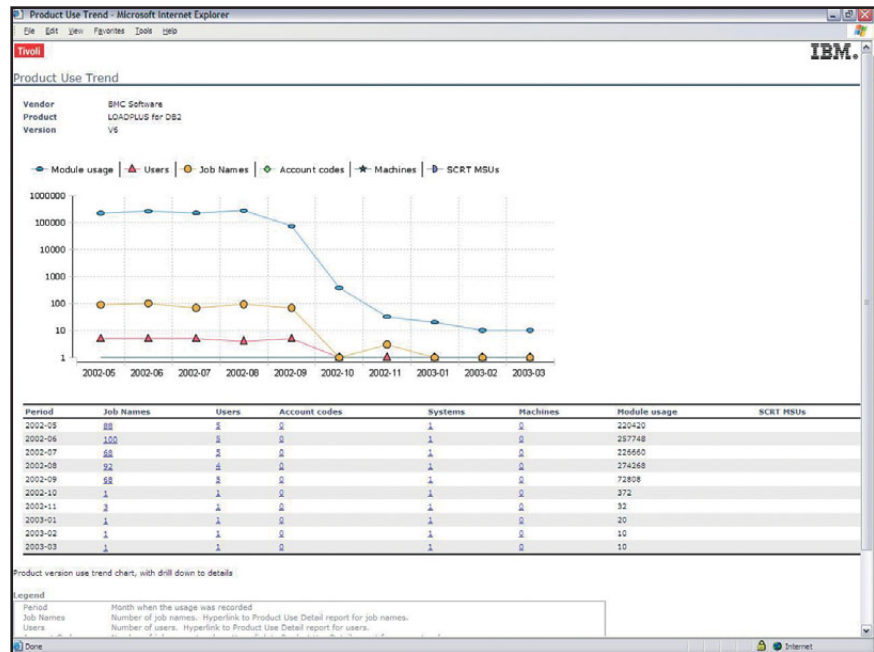
Planning for future software and hardware purchases is often a difficult proposition. If your budget is too high, you waste valuable resources; if too little, your IT organization has trouble meeting performance goals.

Detailed reports in Tivoli Asset Discovery for z/OS show you which applications are being used by whom, enabling you to plan with greater insight. You understand where you can consolidate or upgrade the mainframe servers supporting your applications to optimize costs and performance or plan the migration of an application to a smaller mainframe or LPAR to help minimize license and maintenance fees that are based on capacity. Knowing actual software use provides the context and understanding to help you negotiate favorable maintenance contracts.

When it's time to upgrade or renew your software, Tivoli Asset Discovery for z/OS helps you identify cost-effective configurations that are optimal for your company's use patterns and related needs.

Help facilitate license and contract management and better address regulatory mandates

In today's competitive software market, vendors have stepped up their efforts to help ensure companies comply with licenses and contracts. Unfortunately,



Identify products that have low usage and drill down to see who is using it.

organizations that run hundreds or even thousands of applications and manage unpredictable mainframe workloads often unknowingly exceed their software use agreements.

To proactively manage software licenses, keep licenses current and avoid unforeseen charges, you can use Tivoli Asset Discovery for z/OS to automate the painstaking process of keeping an up-to-date inventory of software and related use. The product's interactive reports also can help you demonstrate compliance to software vendors, maintain financial controls and better address stringent regulatory mandates.

Create an end-to-end software asset management solution

As a stand-alone solution, Tivoli Asset Discovery for z/OS solves two major challenges associated with effective software asset management:

- *Identifying software inventory*
- *Monitoring actual use*

You can extend the value of the product by integrating Tivoli Asset Discovery for z/OS with IBM Tivoli Asset Management for IT. By doing so, you can link software use with the details of your corresponding license agreements and related costs. Having all the crucial purchase and contract information at your fingertips helps you manage compliance and negotiate future contracts with great insight and flexibility.



Add Tivoli Asset Discovery for Distributed for a robust end-to-end software asset management solution that helps you minimize costs and align software spending with your business needs. In this way, Tivoli Asset Discovery for z/OS, Tivoli Asset Management for IT and Tivoli Asset Discovery for Distributed play a key role in the IBM IT service management strategy, which focuses on automating and integrating IT processes across the enterprise.

For more information

To learn more about IBM Tivoli IT asset management solutions and integrated solutions from IBM, contact your IBM representative or IBM Business Partner, or visit ibm.com/software/tivoli/governance/servicemanagement/it-asset-financial.html

Tivoli software from IBM

Tivoli software from IBM helps organizations efficiently and effectively manage information technology (IT) resources, tasks and processes in order to meet ever-shifting business requirements and deliver flexible and responsive IT service management, while reducing costs. Tivoli's portfolio spans software for security, compliance, storage, performance, availability, configuration, operations and IT lifecycle management, and is backed by world-class IBM services, support and research.

Additionally, IBM Global Financing can tailor financing solutions to your specific IT needs. For more information on great rates, flexible payment plans and loans, and asset buyback and disposal, visit: ibm.com/financing

The customer is responsible for ensuring compliance with legal requirements. It is the customer's sole responsibility to obtain advice of competent legal counsel as to the identification and interpretation of any relevant laws and regulatory requirements that may affect the customer's business and any actions the customer may need to take to comply with such laws. IBM does not provide legal advice or represent or warrant that its services or products will ensure that the customer is in compliance with any law or regulation.

© Copyright IBM Corporation 2009

IBM Corporation
Software Group
Route 100
Somers, NY 10589 U.S.A.

Produced in the United States of America
June 2009
All Rights Reserved

IBM, the IBM logo, ibm.com, Tivoli and z/OS are trademarks or registered trademarks of International Business Machines Corporation in the United States, other countries, or both. If these and other IBM trademarked terms are marked on their first occurrence in this information with a trademark symbol (® or ™), these symbols indicate U.S. registered or common law trademarks owned by IBM at the time this information was published. Such trademarks may also be registered or common law trademarks in other countries. A current list of IBM trademarks is available on the Web at "Copyright and trademark information" at ibm.com/legal/copytrade.shtml

Other company, product and service names may be trademarks or service marks of others.

References in this publication to IBM products and services do not imply that IBM intends to make them available in all countries in which IBM operates.

No part of this document may be reproduced or transmitted in any form without written permission from IBM Corporation.

Product data has been reviewed for accuracy as of the date of initial publication. Product data is subject to change without notice. Any statements regarding IBM's future direction and intent are subject to change or withdrawal without notice, and represent goals and objectives only.

THE INFORMATION PROVIDED IN THIS DOCUMENT IS DISTRIBUTED "AS IS" WITHOUT ANY WARRANTY, EITHER EXPRESS OR IMPLIED. IBM EXPRESSLY DISCLAIMS ANY WARRANTIES OF MERCHANTABILITY, FITNESS FOR A PARTICULAR PURPOSE OR NON-INFRINGEMENT. IBM products are warranted according to the terms and conditions of the agreements (e.g. IBM Customer Agreement, Statement of Limited Warranty, International Program License Agreement, etc.) under which they are provided.



Recyclable, please recycle.

TID14041-USEN-00