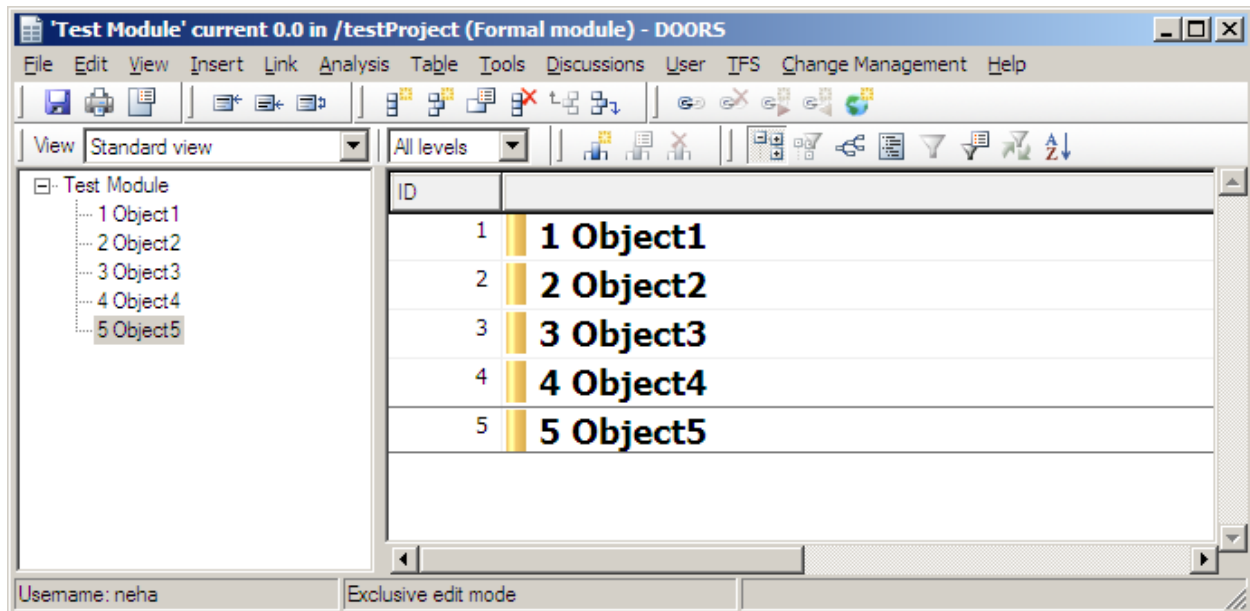


# Best practices for Rational DOORS Microsoft Team Foundation Server Add On

## Creating a formal module

When you create a formal module, follow these steps before you perform any operation on the module.

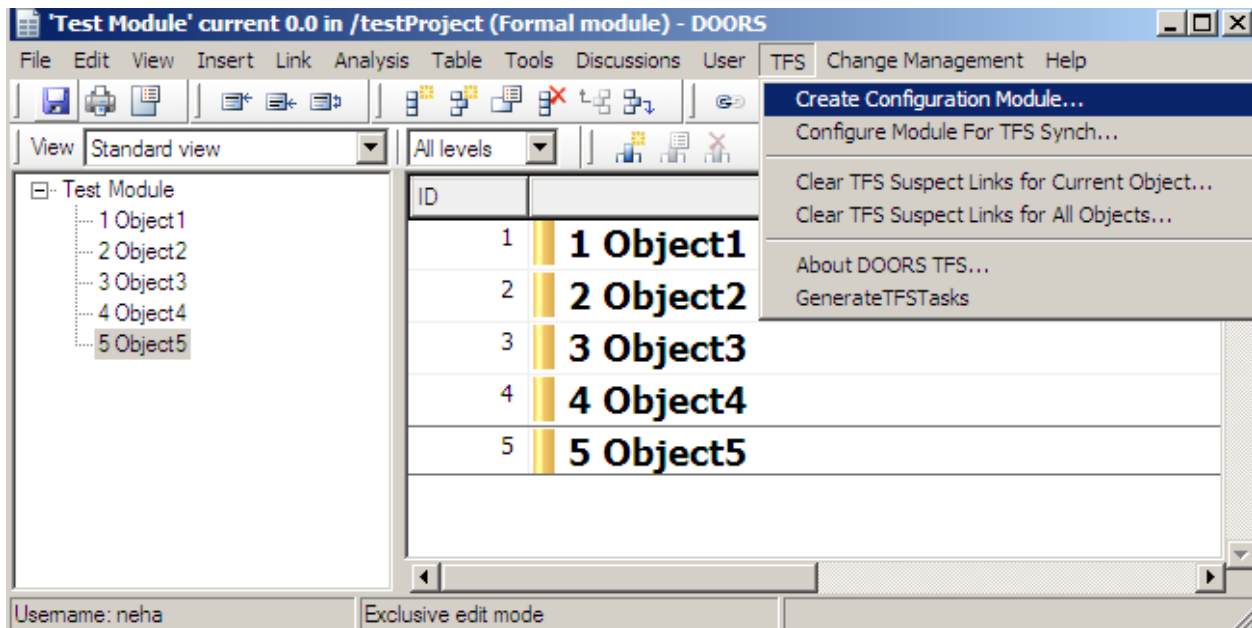
**Close the new module at least once before you perform any operation on it.**



**Create a configuration module for the new module.**

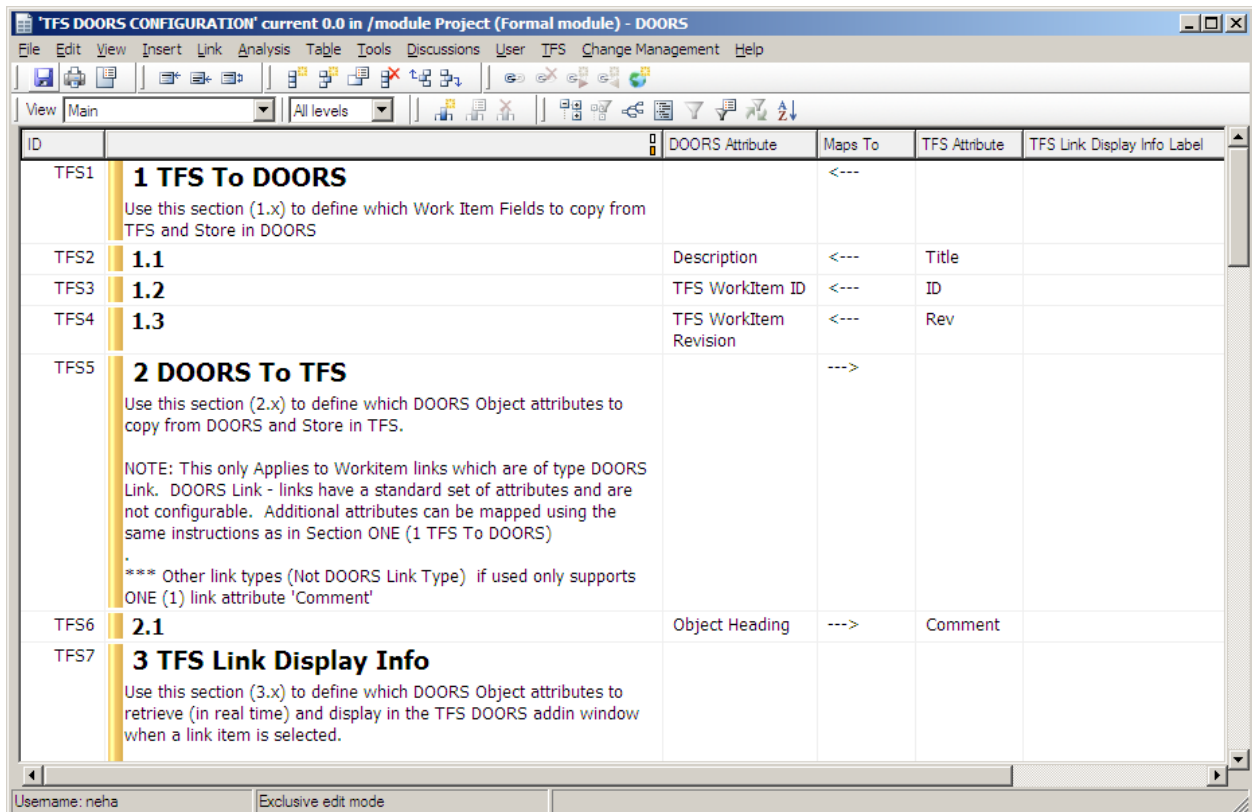
**To create a configuration module:**

1. In the module window, click **TFS > Create Configuration Module**.



The Configuration Module is created and opened.

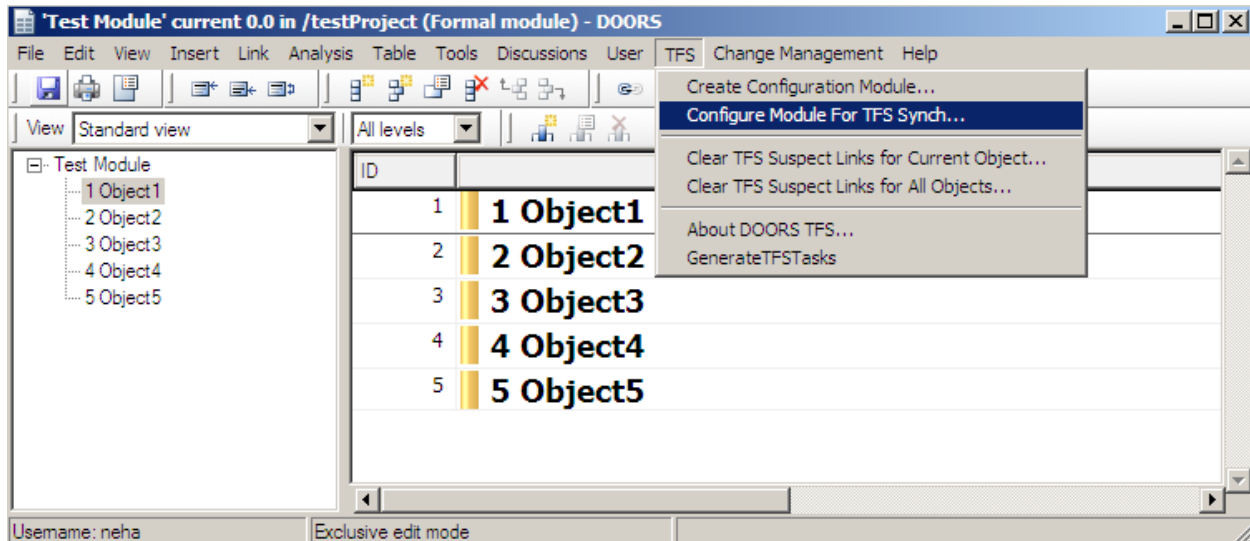
2. Save and close the module.



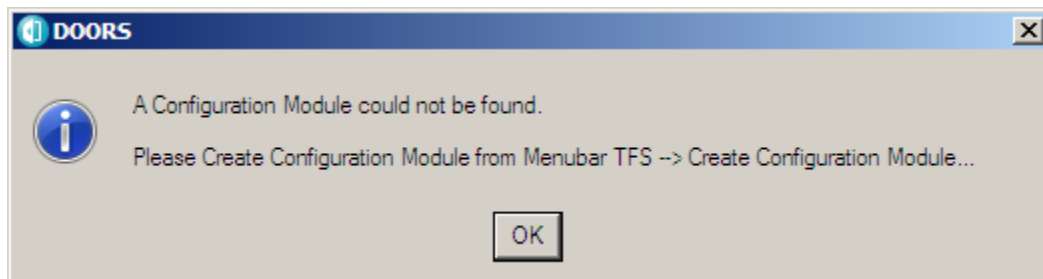
## Create mapping attributes in the new module

To create mapping attributes:

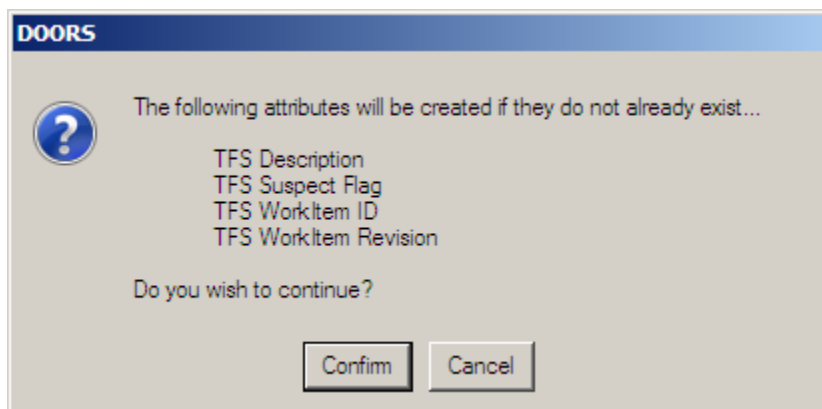
1. In the module window, click **TFS > Configure Module For TFS Synch.**



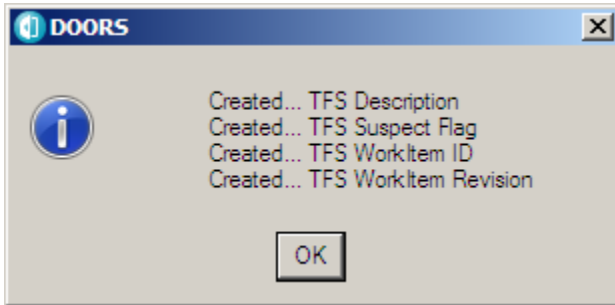
If a configuration module has not already been created for the module, a message is displayed:



If a configuration module is available for the module, a message is displayed:



2. To create mapping attributes in the new module, click **Confirm**. A list of new mapping attributes is displayed:



3. Click OK.

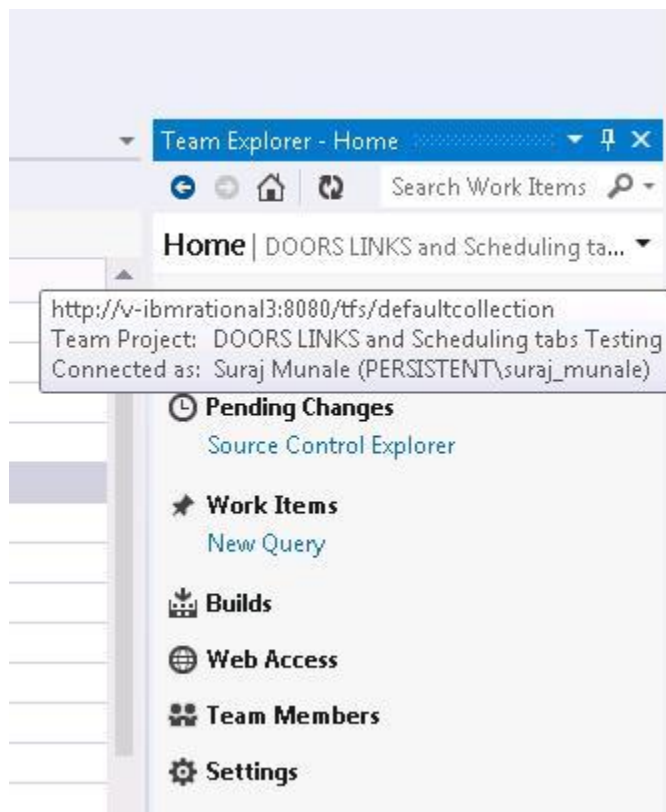
**Save the Formal Module.**

## Configuring the Rational DOORS TFS Scheduler

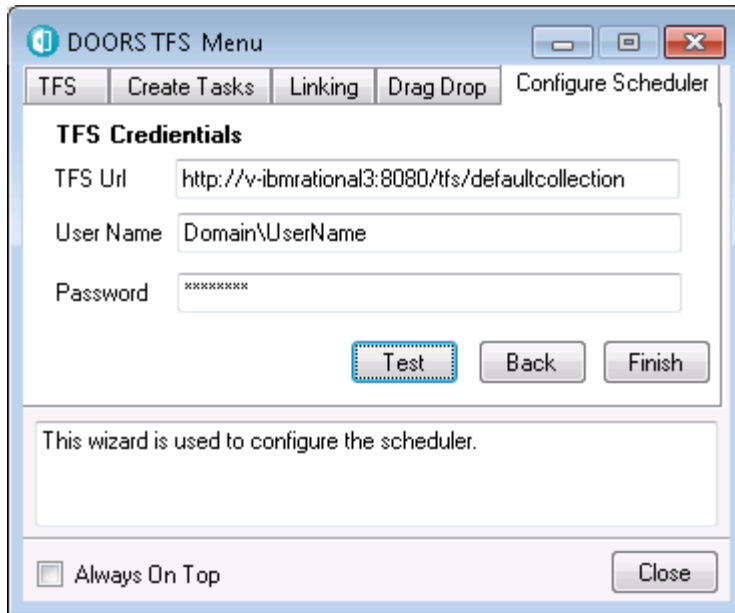
During Configuration of DOORS TFS Scheduler TFS URL should be exactly same as that of actual TFS URL. Note that it is case sensitive.

You can verify the TFS URL using following steps:

1. Open Team Explorer in Visual studio
2. Hover the mouse on the project name (which is just below the **HOME** icon). The TFS URL is displayed.

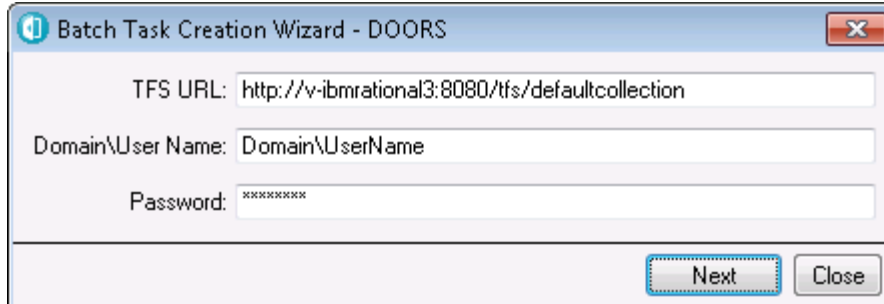


3. Enter this TFS URL when you configure the scheduler.



## Batch Task Creation wizard

When you run the Batch Task Creation wizard, enter the TFS URL described above.



## Installation of Visual Studio 2012

Use the Visual Studio 2012 Full Version that includes Team Explorer 2012 whereas Explicit Installation of Team Explorer 2012 might not work. Install Visual Studio 2012 from scratch on clean machine. Do not upgrade from Visual Studio 2010 to Visual Studio 2012.

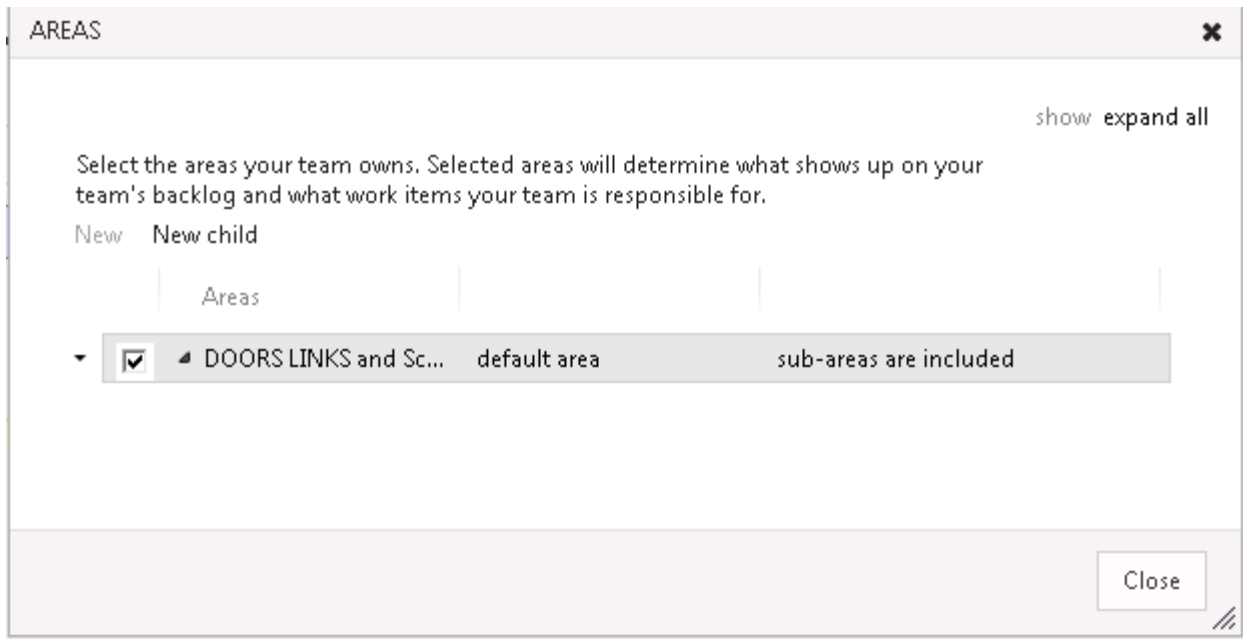
## Workaround for Creating 'Area Path'

If you click Work Item Areas and the browser does not open, use the following steps to create the Area Path:

1. Open the browser.
2. Enter the URL of the Team Foundation Server with collection name. If necessary, enter security credentials.
3. In the Visual Studio web site that is displayed, click **Browse All**. A list of the projects in the collection are displayed.
4. Select the project where you want to create the Area Path and click **Navigate**.

The screenshot shows the VSTS team home page. At the top, there is a navigation bar with 'HOME', 'WORK', 'SOURCE', and 'BUILD' tabs. The current page is 'HOME', and the team name 'DOORS LINKS and Scheduling tabs Testing' is displayed. Below the navigation bar, there are several buttons: '+ Product Backlog Item', '+ Task', '+ Bug', and a 'more' dropdown. A notification banner states 'Some features of Team Web Access are not visible to you.' with a 'show details' link. The 'TEAM FAVORITES' section contains a yellow box with instructions: 'Add items to your team favorites to display them here on the team home page as tiles. You can add work item queries, build definitions and version control paths to your team favorites.' On the right side, there are three sections: 'ACTIVITIES' with links for 'View board', 'View work items', and 'Open new instance of Visual Studio'; 'MEMBERS (1)' with a 'Manage all members...' link; and 'ADMINISTRATION' with links for 'Configure schedule and iterations...' and 'Configure work areas...'. The 'Configure work areas...' link is highlighted with a red circle.

5. Click **Configure work area**.



From this point, follow the procedure to add the Area node that is described in the **Rational DOORS Microsoft Team Foundation Server Add On Installation and Administration Guide V3.0.2.**



# Notices

© Copyright IBM Corporation 2006, 2014

US Government Users Restricted Rights - Use, duplication, or disclosure restricted by GSA ADP Schedule Contract with IBM Corp.

This information was developed for products and services offered in the U.S.A. IBM may not offer the products, services, or features discussed in this document in other countries. Consult your local IBM representative for information on the products and services currently available in your area. Any reference to an IBM product, program, or service is not intended to state or imply that only that IBM product, program, or service may be used. Any functionally equivalent product, program, or service that does not infringe any IBM intellectual property right may be used instead. However, it is the user's responsibility to evaluate and verify the operation of any non-IBM product, program, or service.

IBM may have patents or pending patent applications covering subject matter described in this document. The furnishing of this document does not grant you any license to these patents. You can send written license inquiries to:

IBM Director of Licensing  
IBM Corporation  
North Castle Drive  
Armonk, NY 10504-1785  
U.S.A.

For license inquiries regarding double-byte character set (DBCS) information, contact the IBM Intellectual Property Department in your country or send written inquiries to:

Intellectual Property Licensing  
Legal and Intellectual Property Law  
IBM Japan Ltd.  
19-21 Nihonbashi-Hakozakicho, Chuo-ku  
Tokyo 103-8510, Japan

**The following paragraph does not apply to the United Kingdom or any other country where such provisions are inconsistent with local law:**  
INTERNATIONAL BUSINESS MACHINES CORPORATION PROVIDES THIS PUBLICATION "AS IS" WITHOUT WARRANTY OF ANY KIND, EITHER EXPRESS OR IMPLIED, INCLUDING, BUT NOT LIMITED TO, THE IMPLIED WARRANTIES OF NON-INFRINGEMENT,

MERCHANTABILITY OR FITNESS FOR A PARTICULAR PURPOSE. Some states do not allow disclaimer of express or implied warranties in certain transactions. Therefore, this statement may not apply to you.

This information could include technical inaccuracies or typographical errors. Changes are periodically made to the information herein; these changes will be incorporated in new editions of the publication. IBM may make improvements and/or changes in the product(s) and/or the program(s) described in this publication at any time without notice.

Any references in this information to non-IBM websites are provided for convenience only and do not in any manner serve as an endorsement of those websites. The materials at those websites are not part of the materials for this IBM product and use of those websites is at your own risk.

IBM may use or distribute any of the information you supply in any way it believes appropriate without incurring any obligation to you.

Licenses of this program who wish to have information about it for the purpose of enabling: (i) the exchange of information between independently created programs and other programs (including this one) and (ii) the mutual use of the information which has been exchanged, should contact:

Intellectual Property Dept. for Rational Software  
IBM Corporation  
5 Technology Park Drive  
Westford, Massachusetts 01886  
U.S.A.

Such information may be available, subject to appropriate terms and conditions, including in some cases, payment of a fee.

The licensed program described in this document and all licensed material available for it are provided by IBM under terms of the IBM Customer Agreement, IBM International Program License Agreement or any equivalent agreement between us.

Any performance data contained herein was determined in a controlled environment. Therefore, the results obtained in other operating environments may vary significantly. Some measurements may have been made on development-level systems and there is no guarantee that these measurements will be the same on generally available systems. Furthermore, some measurements may have been estimated through extrapolation. Actual results may vary. Users of this document should verify the applicable data for their specific environment.

Information concerning non-IBM products was obtained from the suppliers of those products, their published announcements or other publicly available sources. IBM has not tested those products and cannot confirm the accuracy of performance, compatibility or any other claims related to non-IBM products. Questions on the capabilities of non-IBM products should be addressed to the suppliers of those products.

This information contains examples of data and reports used in daily business operations. To illustrate them as completely as possible, the examples include the names of individuals, companies, brands, and products. All of these names are fictitious and any similarity to the names and addresses used by an actual business enterprise is entirely coincidental.

If you are viewing this information softcopy, the photographs and color illustrations may not appear.

Additional legal notices are described in the legal\_information.html file that is included in your software installation.

## Trademarks

IBM, the IBM logo, and [ibm.com](http://ibm.com) are trademarks or registered trademarks of International Business Machines Corp., registered in many jurisdictions worldwide. Other product and service names might be trademarks of IBM or other companies. A current list of IBM trademarks is available on the web at [www.ibm.com/legal/copytrade.html](http://www.ibm.com/legal/copytrade.html).

Microsoft and Windows are trademarks of Microsoft Corporation in the United States, other countries, or both.