

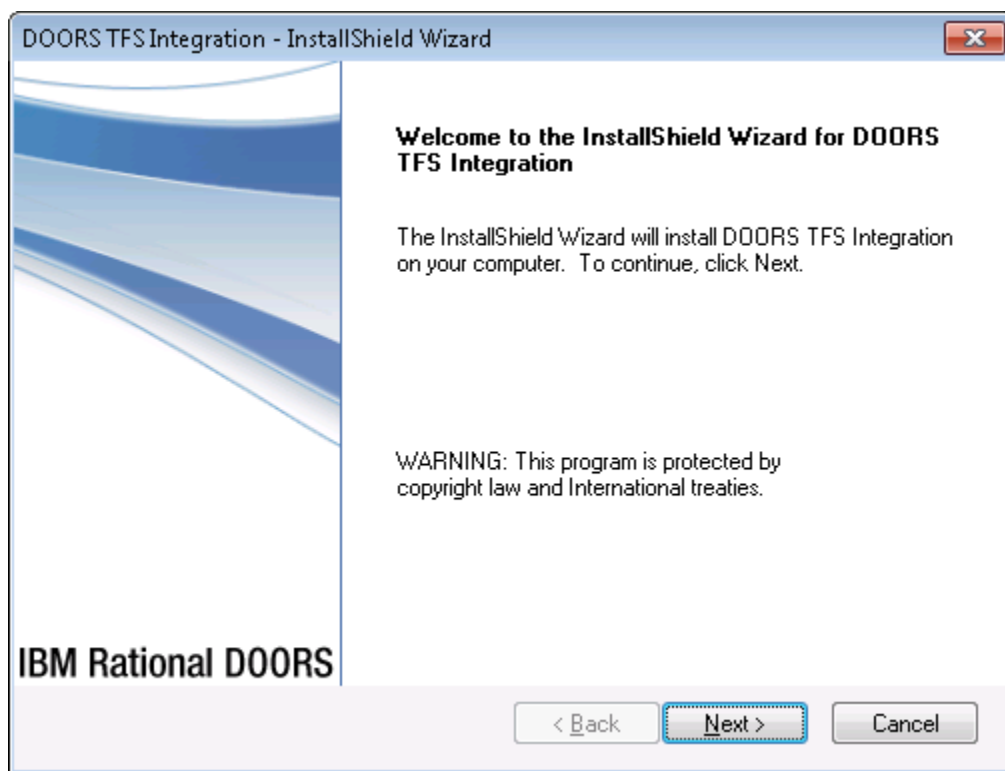
Installing and verifying Rational DOORS for Microsoft Team Foundation Server Add On

Follow the procedures in this document to install IBM® Rational® DOORS® Microsoft Team Foundation Server Add On and verify that the correct folders, files, registry entry, and Scheduler Service exist.

Installing Rational DOORS Microsoft Team Foundation Server Add On

To install Rational DOORS Microsoft Team Foundation Server Add On, follow these steps:

1. Browse to and select the executable file for Rational DOORS Microsoft Team Foundation Server Add On. The installation wizard opens:



2. Follow the instructions in the wizard to complete the installation.

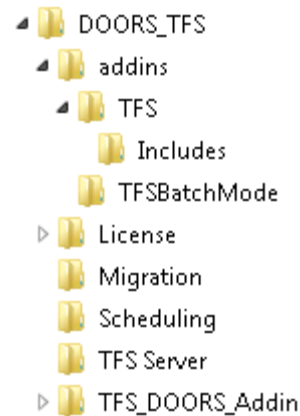
Tip: When you are prompted to select an installation location, if you do not want to use the default location, browse to and select another directory.

3. After the installation is complete, verify that the folder structure, files, registry, and Scheduler Service are set up correctly. For instructions, see the next sections.

Verifying the installation folder structure

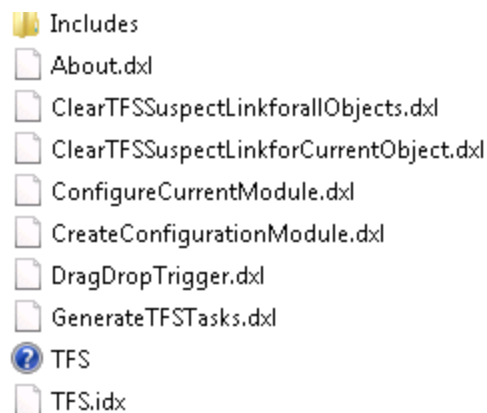
To verify the folder structure of installation directory, open the installation directory and make sure that the structure contains these folders:

Path: "C:/Program Files/IBM/Rational/"

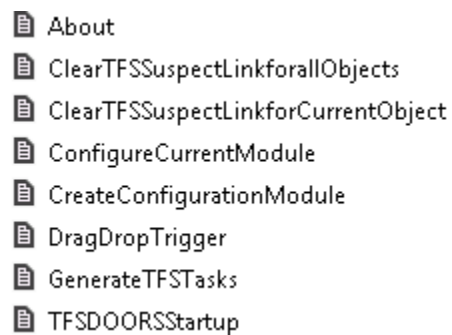


Verifying installation files

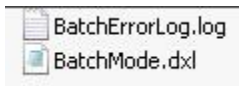
1. Go to the C:\Program Files\IBM\Rational\DOORS_TFS\addins\TFS directory, and make sure that it contains these files:



2. Go to the C:\Program Files\IBM\Rational\DOORS_TFS\addins\TFS\includes directory, and make sure it contains these files:



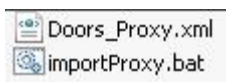
3. Go to the C:\Program Files\IBM\Rational\DOORS_TFS\addin\TFSBatchMode directory, and make sure it contains these files:



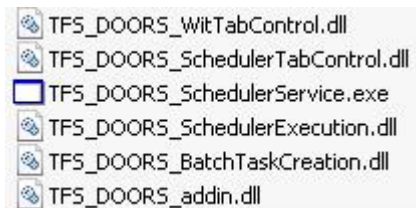
4. Go to the /C:\Program Files\IBM\Rational\DOORS_TFS\Scheduling directory, and make sure it contains this file:



5. Go to the C:\Program Files\IBM\Rational\DOORS_TFS\TFS Server directory, and make sure it contains these files:



6. Go to the C:\Program Files\IBM\Rational\DOORS_TFS\TFS_DOORS_Addin directory, and make sure it contains these files:



7. Go to the C:\Program Files\IBM\Rational\DOORS_TFS\Migration directory, and make sure it contains this file:



8. Go to the C:\Program Files\IBM\Rational\DOORS\9.3\lib\dxl\startupFiles directory, and make sure it contains this file:

TFSDOORSStartup.inc

9. Go to the C:\Documents and Settings\All Users\Application Data\Microsoft\MSEnvShared\Addins directory, and make sure it contains this file:

TFS_DOORS_addin.AddIn

Content: “<Assembly>C:\Program Files\IBM\Rational\DOORS_TFS
\TFS_DOORS_Addin\TFS_DOORS_addin.dll</Assembly>”

Verify that the <Assembly> entry contains the correct path name of the “TFS_DOORS_addin.dll”.

10. Go to the C:\Documents and Settings\All Users\Application Data\Microsoft\Team Foundation\Work Item Tracking\Custom Controls\11.0 directory, and make sure it contains this file:

SchedulerContol.wicc

Content: “<Assembly>C:\Program Files\IBM\Rational\DOORS_TFS \TFS_DOORS_Addin\TFS_DOORS_SchedulerTabControl.dll</Assembly>”

Verify that the <Assembly> entry contains the correct path name of the “TFS_DOORS_SchedulerTabControl.dll”.

11. Go to the C:\Documents and Settings\All Users\Application Data\Microsoft\Team Foundation\Work Item Tracking\Custom Controls\11.0 directory, and make sure it contains this file:

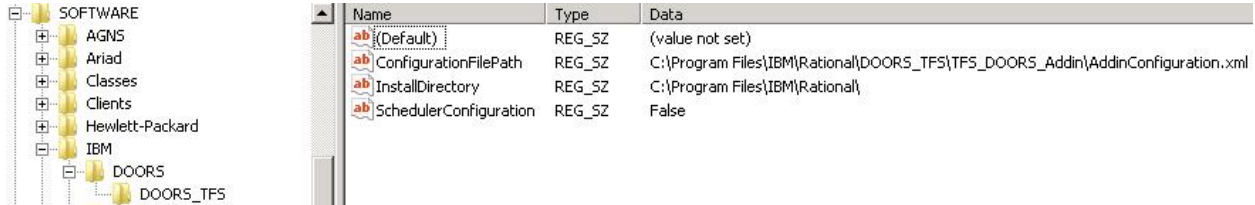
WitTabControl.wicc

Content: <Assembly>C:\Program Files\IBM\Rational\DOORS_TFS \TFS_DOORS_Addin\ TFS_DOORS_WitTabControl.dll</Assembly>

Verify that the <Assembly> entry contains the correct path name of the “TFS_DOORS_WitTabControl.dll”.

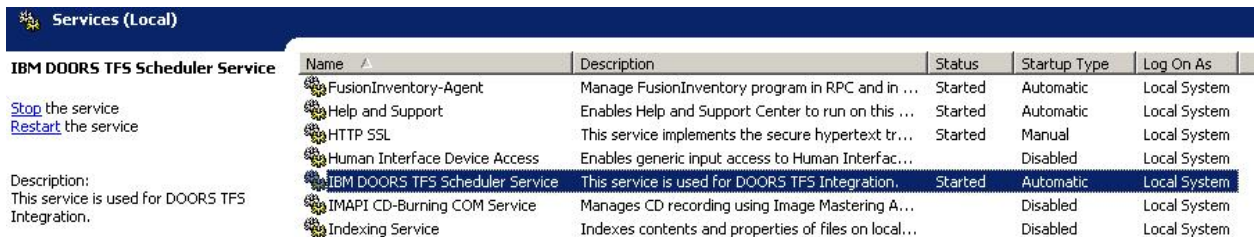
Verifying the registry

Go to the *HKEY_LOCAL_MACHINE\SOFTWARE\IBM* directory, and verify that the registry values are as expected. For example:



Verifying the Scheduler Service

Verify that a Windows Service named IBM DOORS TFS Scheduler Service exists, as the next image shows.



Notices

© Copyright IBM Corporation 2006, 2014

US Government Users Restricted Rights - Use, duplication, or disclosure restricted by GSA ADP Schedule Contract with IBM Corp.

This information was developed for products and services offered in the U.S.A. IBM may not offer the products, services, or features discussed in this document in other countries. Consult your local IBM representative for information on the products and services currently available in your area. Any reference to an IBM product, program, or service is not intended to state or imply that only that IBM product, program, or service may be used. Any functionally equivalent product, program, or service that does not infringe any IBM intellectual property right may be used instead. However, it is the user's responsibility to evaluate and verify the operation of any non-IBM product, program, or service.

IBM may have patents or pending patent applications covering subject matter described in this document. The furnishing of this document does not grant you any license to these patents. You can send written license inquiries to:

IBM Director of Licensing
IBM Corporation
North Castle Drive
Armonk, NY 10504-1785
U.S.A.

For license inquiries regarding double-byte character set (DBCS) information, contact the IBM Intellectual Property Department in your country or send written inquiries to:

Intellectual Property Licensing
Legal and Intellectual Property Law
IBM Japan Ltd.
19-21, Nihonbashi-Hakozakicho, Chuo-ku
Tokyo 103-8510, Japan

The following paragraph does not apply to the United Kingdom or any other country where such provisions are inconsistent with local law:
INTERNATIONAL BUSINESS MACHINES CORPORATION PROVIDES THIS PUBLICATION "AS IS" WITHOUT WARRANTY OF ANY KIND, EITHER EXPRESS OR IMPLIED, INCLUDING, BUT NOT LIMITED TO, THE IMPLIED WARRANTIES OF NON-INFRINGEMENT,

MERCHANTABILITY OR FITNESS FOR A PARTICULAR PURPOSE. Some states do not allow disclaimer of express or implied warranties in certain transactions. Therefore, this statement may not apply to you.

This information could include technical inaccuracies or typographical errors. Changes are periodically made to the information herein; these changes will be incorporated in new editions of the publication. IBM may make improvements and/or changes in the product(s) and/or the program(s) described in this publication at any time without notice.

Any references in this information to non-IBM websites are provided for convenience only and do not in any manner serve as an endorsement of those websites. The materials at those websites are not part of the materials for this IBM product and use of those websites is at your own risk.

IBM may use or distribute any of the information you supply in any way it believes appropriate without incurring any obligation to you.

Licenses of this program who wish to have information about it for the purpose of enabling: (i) the exchange of information between independently created programs and other programs (including this one) and (ii) the mutual use of the information which has been exchanged, should contact:

Intellectual Property Dept. for Rational Software
IBM Corporation
5 Technology Park Drive
Westford, Massachusetts 01886
U.S.A.

Such information may be available, subject to appropriate terms and conditions, including in some cases, payment of a fee.

The licensed program described in this document and all licensed material available for it are provided by IBM under terms of the IBM Customer Agreement, IBM International Program License Agreement or any equivalent agreement between us.

Any performance data contained herein was determined in a controlled environment. Therefore, the results obtained in other operating environments may vary significantly. Some measurements may have been made on development-level systems and there is no guarantee that these measurements will be the same on generally available systems. Furthermore, some measurements may have been estimated through extrapolation. Actual results may vary. Users of this document should verify the applicable data for their specific environment.

Information concerning non-IBM products was obtained from the suppliers of those products, their published announcements or other publicly available sources. IBM has not tested those products and cannot confirm the accuracy of performance, compatibility or any other claims related to non-IBM products. Questions on the capabilities of non-IBM products should be addressed to the suppliers of those products.

This information contains examples of data and reports used in daily business operations. To illustrate them as completely as possible, the examples include the names of individuals, companies, brands, and products. All of these names are fictitious and any similarity to the names and addresses used by an actual business enterprise is entirely coincidental.

If you are viewing this information softcopy, the photographs and color illustrations may not appear.

Additional legal notices are described in the legal_information.html file that is included in your software installation.

Trademarks

IBM, the IBM logo, and ibm.com are trademarks or registered trademarks of International Business Machines Corp., registered in many jurisdictions worldwide. Other product and service names might be trademarks of IBM or other companies. A current list of IBM trademarks is available on the web at www.ibm.com/legal/copytrade.html.

Microsoft and Windows are trademarks of Microsoft Corporation in the United States, other countries, or both.