

Version 7.0.1.1 - Migration 6.1.2.7 to 7.0.1.1
Windows, UNIX, Linux



Release Notes

Version 7.0.1.1 - Migration 6.1.2.7 to 7.0.1.1
Windows, UNIX, Linux



Release Notes

Before using this information, be sure to read the general information under "Notices," on page 55.

Contents

Tables	v
-------------------------	----------

About this book	vii
----------------------------------	------------

Who should read this book	vii
Proprietary notice	vii

Chapter 1. About this release	1
--	----------

Documentation updates	1
Updated instructions on metrics enablement installation	1
Customer change requests implemented in 7.0.1.1	1
Adding effort hours to the Timephased Budgets pivot	1
Copy external link	1
Searching the Work Management view by Project ID and Reference #	5
Creating a project using templates via Web Services API	5
RPMITray installation	5

Chapter 2. Status of change requests	7
---	----------

Known problems	7
Problem in the response dialog box of document workflows	7
Publish to templates	7
Creating documents and scope elements from the Template view	7
Documents transfer in Web Services API	7
Running scope element workflow processes on transferred scope elements	7
PMR 75380 999 672; Unable to drag and drop a document to template when a filter is used	7
Plugin client installer issue	7
Copy external link; unrestricted document security rights	8
Problems fixed in this release	8

Chapter 3. Installing metrics capabilities for Rational Portfolio Manager	9
--	----------

Overview of enabling metrics features	9
Related documentation	9
Work flow and installation considerations	9
Overview of the installation process	10
System requirements	11
Software requirements	11
Configuring Rational Portfolio Manager middleware	11
Updating the PJCserver.ini file	11
Modifying com.ibm.rpm.SPListener.properties	12
Deploying and configuring RPMPJC web services	12
Installing the RPMPJC web service	12
Updating the ConnectionPool.ini file	13
Enabling HTTP communication	13

To enable HTTP communication from the Rational Portfolio Manager server to the Rational ProjectConsole server	13
To enable HTTP communication from the Rational ProjectConsole Designer to the Rational Portfolio Manager server	14
Disabling HTTP communication	14
Configuring security features (HTTPS)	14
Create self-signed security certificates	15
Configure the Rational Web Platform to accept HTTPS	25
Restart the Rational Web Platform and Rational ProjectConsole services	25
Import the Rational ProjectConsole security certificate to the Rational Portfolio Manager server	25
Configure the Rational Portfolio Manager application server to accept HTTPS	26
Generate a security certificate on the Rational Portfolio Manager application server	26
Import the Rational Portfolio Manager security certificate to the Rational ProjectConsole server	26
Verifying the installation	27
Testing the Rational ProjectConsole Web site	27
Testing the Rational Portfolio Manager client	27

Chapter 4. Migrating to this version	29
---	-----------

Before you begin	29
Migrating Rational Portfolio Manager on DB2 for UNIX	29
Prerequisites for migration	29
Definition of terms used in this section	29
Migration steps	30
Steps used when migrating from version 6.1.2.7	30
Deploying Rational Portfolio Manager Application Server	31
Modifying the ConnectionPool.ini file	31
Modifying the log4j.properties file	33
Modifying the ConnectionManager.ini file	33
JDBC driver settings	33
Verifying the installation	34
RPM/PjC installation notes	34
Deploying RPM Web Services API ear module	34
Post install activities	34
Migrating Rational Portfolio Manager on Oracle for UNIX	34
Prerequisites for migration	34
Migration steps	35
Steps to migrate RPM schema owner	35
Steps to migrate RPM connected user	36
Steps to integrate RUP 2003	37
Deploying Rational Portfolio Manager Application Server	37
Modifying the ConnectionPool.ini file	37
Modifying the log4j.properties file	39

Modifying the ConnectionManager.ini file . . .	39
JDBC driver settings	39
Verifying the installation	39
RPM/PjC installation notes	40
Deploying RPM Web Services API ear module.	40
Post install activities	40
Migrating Rational Portfolio Manager on DB2 for	
Windows	40
Prerequisites for migration	40
Definition of terms used in this chapter	40
Migration steps	41
Batch process steps used when migrating from	
version 6.1.2.7	41
Deploying Rational Portfolio Manager Application	
Server	42
Modifying the ConnectionPool.ini file	42
Modifying the log4j.properties file	44
Modifying the ConnectionManager.ini file	44
JDBC driver settings	44
Verifying the installation	45
RPM/PjC installation notes	45
Deploying RPM Web Services API ear module.	45
Post install activities	45

Migrating Rational Portfolio Manager on Oracle for	
Windows	45
Prerequisites for migration	45
Migration steps	46
Steps to migrate RPM schema owner	46
Steps to migrate RPM connected user	47
Steps to integrate RUP 2003	48
Deploying Rational Portfolio Manager Application	
Server	48
Modifying the ConnectionPool.ini file	48
Modifying the log4j.properties file	49
Modifying the ConnectionManager.ini file	50
JDBC driver settings	50
Verifying the installation	50
RPM/PjC installation notes	51
Deploying RPM Web Services API ear module.	51
Post install activities	51

Chapter 5. Contacting IBM Customer Support for Rational software products 53

Appendix. Notices 55

Tables

1. Customer originated problems fixed in this release	8	3. Mail Alert Server Setting	38
2. Mail Alert Server Setting	32	4. Mail Alert Server Setting	43
		5. Mail Alert Server Setting	49

About this book

This document outlines Rational Portfolio Manager 7.0.1.1 release notes. It covers migration procedures, new features added in this release, a list of known problems, and problems that have been fixed in this release.

Who should read this book

This document is intended for any Rational Portfolio Manager user and database or system administrators responsible for Rational Portfolio Manager upgrades.

Proprietary notice

Licensed materials – Property of IBM

© Copyright IBM Corp. 1997, 2006

US government users restricted rights – Use, duplication, or disclosure restricted by GSA ADP schedule contract with IBM Corp.

Chapter 1. About this release

Documentation updates

There is an updated version of Rational Portfolio Manager Web Services API guide included in this release. The guide is located in the `${MIGRATION_PACKAGE}/Documents` folder.

Updated instructions on metrics enablement installation

Rational Portfolio Manager now supports an integration with Rational ProjectConsole version 7.0. This integration enables metrics capabilities for Rational Portfolio Manager. See Chapter 3, "Installing metrics capabilities for Rational Portfolio Manager," on page 9 for information about installing and configuring the integration.

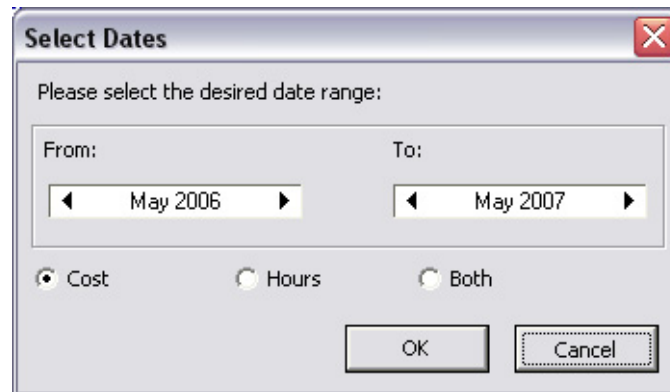
The information in this section replaces the chapter, "Installing the Rational Portfolio Manager metrics enablement package," in the book, *IBM Rational Portfolio Manager Metrics Enablement: Installation and Getting Started Guide* included with Rational Portfolio Manager 7.0 release.

Customer change requests implemented in 7.0.1.1

This section describes the customer change requests implemented in version 7.0.1.1 of Rational® Portfolio Manager.

Adding effort hours to the Timephased Budgets pivot

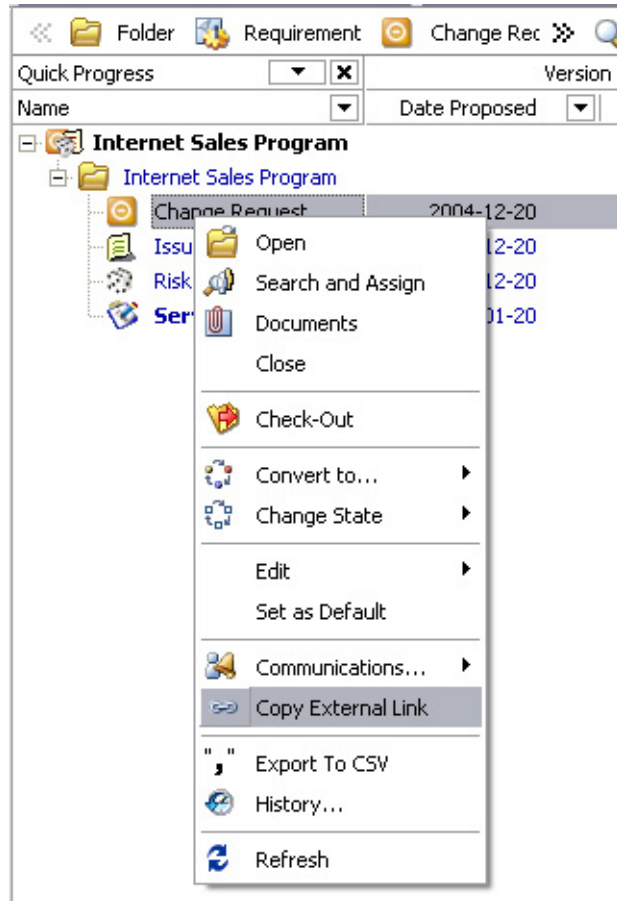
This functionality enables you to track/report hours of work effort assigned to a project on a timephased basis. Users are prompted to select **Cost**, **Hours**, or **Both** data to be displayed in the pivot from the **Select Dates** dialog.



Copy external link

This new feature allows to copy any WBS, scope element, or documents as an external link, then the link can be sent to users for execution. To copy external link:

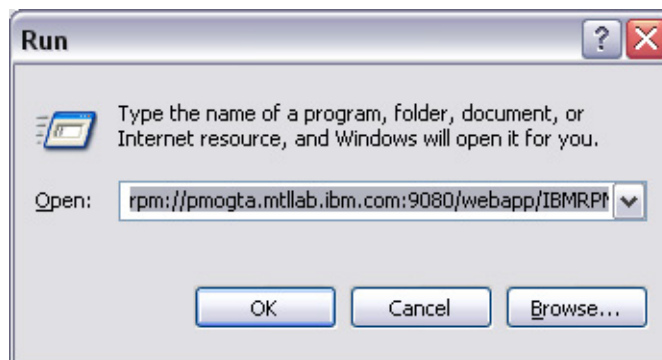
1. While in **Work Management**, **Scope Management**, or **Documents** view right click on any element.
2. Select **Copy External Link** from the context menu. The link of the element is copied into the clipboard.



3. Send the link to the users. (for example by e-mail)

To execute external links:

1. Click on **Start** program in your Windows® application.
2. Select **Run**.
3. Copy and paste the external link in the **Open** field.
4. Click **OK**.



If Rational Portfolio Manager is not running, it will start in the usual way and you must log on to the application. The external link will be opened in the **My Portal** view.

Unrestricted documents

This is the only element type that can be sent as an external link to anyone and opened regardless of their security rights. All other element types must be assigned to users in order to be able to view the external links. To make a document unrestricted:

1. While in the **Documents** view right click on a document and select **Description/Properties** from the context menu.
2. From the **Identification** portlet click once in the **Element Security** field, click the drop down arrow and select **Unrestricted** from the list.

The screenshot shows a 'Document' dialog box with the following sections:

- Identification**: Fields for Name (Document), Attachment, Reference number, Revision number (0.1), Document number (157825), Visible At Parent (Yes), Element Security (Project Level), State (Project Level), and Published (By Invitation). The Element Security dropdown is open, showing 'Unrestricted' as the selected option.
- Details**: A section with expand/collapse icons.
- Attributes**: A section with expand/collapse icons.
- Resources**: A section with expand/collapse icons.
- Status Update**: A table with columns: Revision, Name/Step, State, Date/Time, and Author. The first row shows: 0.1, Document, DOCUMENT SU..., 2005-12-06 ..., Mahmoud.
- Change Brief**: A text area containing the word 'CREATED'.

Buttons for 'OK' and 'Cancel' are located at the bottom right of the dialog.

3. Click **OK**.

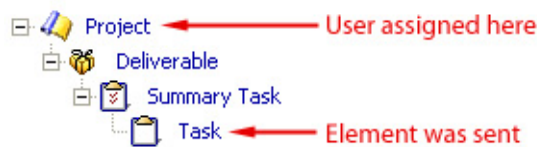
Copy External Link business rules

- In the **Work Management** view, **Copy External Link** option is only available when any of the **WBS Plans** filters are selected. This option is disabled for **My Work** or **My Teams' Work** filters.
- Users must be assigned to the elements and have assignment security rights to be able to view external links.

- When copying the external link for any WBS element, the project must be published to the team for users to be able to view those elements.
- Only **Unrestricted** documents will be visible to all users regardless of their assignment security rights.
- If the sent element or its parent was deleted, the **Element not found** error message will be displayed.
- If Rational Portfolio Manager is not running, the application will open when executing an external link but users must log on.
- External links are opened in **My Portal** view. Clicking the **Close** button will close the external link view and **My Portal** view will be displayed.
- External links are expanded to the sent item.
- Sent items or its parent nodes cannot be deleted.
- Parent nodes of the sent items cannot be modified. (renamed, checked out, and so on) These nodes will be disabled and greyed out.
- The description view of the parent nodes can be displayed but not checked out for modifications.
- Only the children nodes of the sent item can be deleted. (security permitting)

Copy External Link security scenarios

Scenario 1:



User opens external link; on the project level he/she will receive project assignment security. On all other levels no extra security will be given to the user except for his/her project assignment security. This security will be inherited by all children elements.

Scenario 2:



User opens external link; on the project level he/she will receive **Project Visitor** security. On deliverable level user gets **Project Visitor** security plus his/her assignment security. On summary task and task levels no extra security will be given to user. These securities will be inherited.


Scenario 3:



User opens external link; on the project level he/she will receive **Project Visitor** security. On deliverable and summary task levels no extra security will be given to user. On the task user will get **Project Visitor** security plus his/her assignment security.

Searching the Work Management view by Project ID and Reference

Now it is possible to search the **Work Management** view by **Project ID** or **Reference #**. To search by **Project ID** or **Reference #**:

1. While in **Work Management** view click the **Find**  icon in the secondary toolbar.
2. Type in the project ID or reference number in the **Find** field.
3. Click **OK**.

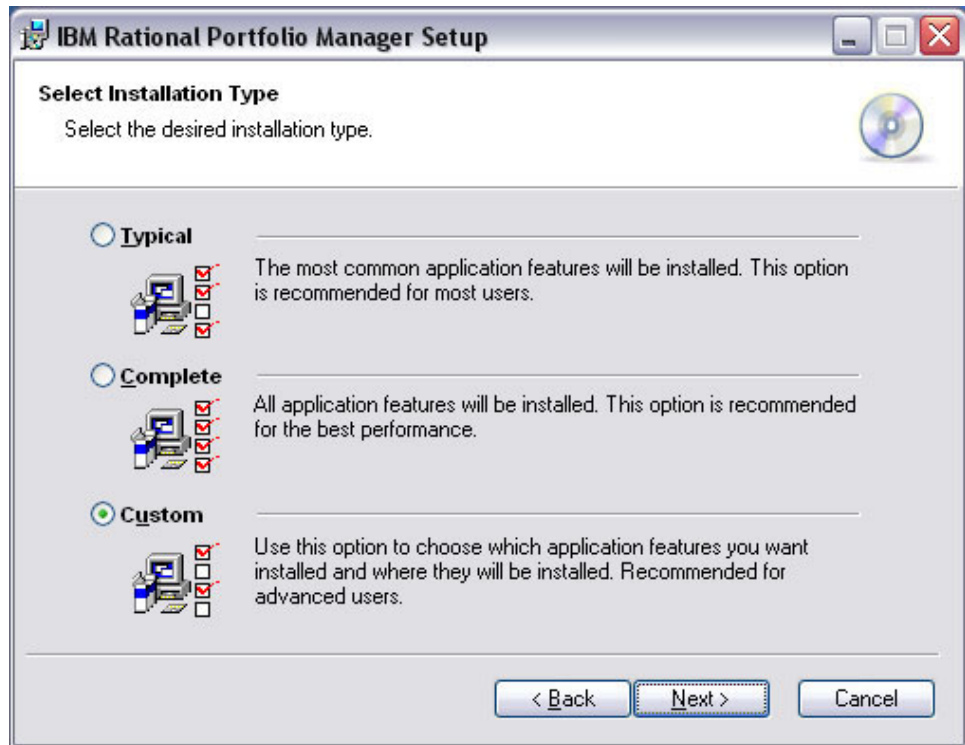
Creating a project using templates via Web Services API

This feature allows you to adopt a project from template using Rational Portfolio Manager Web Services API.

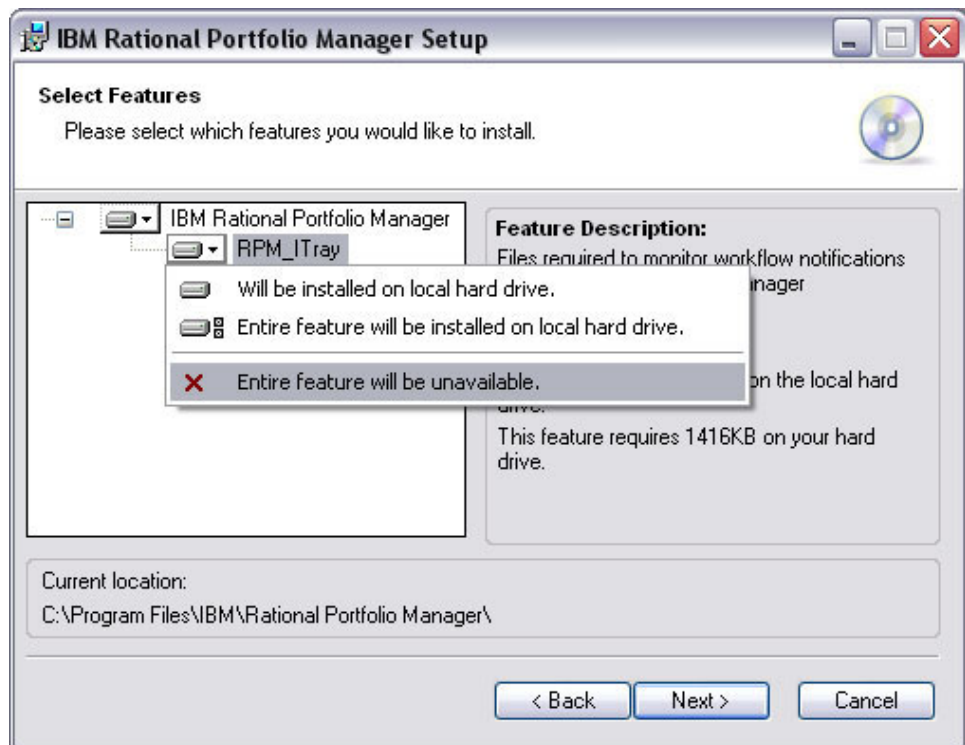
RPMITray installation

The installation of the RPM system tray is optional. To exclude the RPM system tray from the client installation:

1. Select the **Custom** radio button during setup.



2. Click the **RPM_ITray** option and select **Entire feature will be unavailable**.



Chapter 2. Status of change requests

This section explains the status of noteworthy problems in this release.

Known problems

This section describes known problems in this release of Rational Portfolio Manager.

Problem in the response dialog box of document workflows

After a document workflow step with mandatory layout has been sent to a user and the user opens the document description view, the response dialog box does not open. When the description view is closed, the response dialog box is open but it's not possible to submit a response. There is no workaround for this issue and it will be fixed in the future releases of Rational Portfolio Manager.

Publish to templates

Documents and scope elements cannot be published to templates if you filtered the **Work Management** view using the **Portfolio Configuration** dialog. The workaround is to select root node in the **Portfolio Configuration** dialog.

Creating documents and scope elements from the Template view

Documents and scope elements cannot be created from templates if you filtered the **Work Management** view using the **Portfolio Configuration** dialog. The workaround is to select root node in the **Portfolio Configuration** dialog.

Documents transfer in Web Services API

Document transfer in the RPM Web Services API is not functional under WebSphere® version 6.0.x.x. As a workaround, you need to use WebSphere version 6.1.0.0 or later.

Running scope element workflow processes on transferred scope elements

When scope elements are transferred to the Work Management it is still possible to run scope element workflow processes on them. However, this behavior causes some problems in the workflow layouts and state changes.

PMR 75380 999 672; Unable to drag and drop a document to template when a filter is used

You cannot drag and drop a document from the **Documents** view to the **Template** view if any document filter is selected besides the **All Document Types**. The workaround is to select the **All Document Types** from the filter area to be able to publish documents to templates.

Plugin client installer issue

During the Plugin version of the client installation, if you choose **Complete** or **Custom** install, the installer will freeze and the end of the installation. The

workaround is to run the Windows Task Manager, click the Processes tab, find and select MSIEXEC.EXE process and click the End Process button. Rerun the installer again and choose **Typical** installation.

Note: There is no issue with the Standalone version of the client installer.

Copy external link; unrestricted document security rights

When opening the **Properties/Description** dialog of an unrestricted document type from an external link, you will get the visitor's security rights and not the unrestricted. If the view is refreshed and you open the **Properties/Description** dialog again, you will get the **Unrestricted** security rights.

Problems fixed in this release

This section lists the problems fixed in this release of Rational Portfolio Manager.

Table 1. Customer originated problems fixed in this release

Problem ID	Description
PMR 20184 999 631	T&E license user can't add a state flow to My Portal page.
PMR 44361 122 000; APAR# PK22447	When selecting Resources Management, Work Package by Project filter, the Resource Manager retrieves incorrect timesheet and resource utilization information in pivot menu.
PMR 44674 122 000; APAR# PK22593	Exception ERowException in module RPMBROKER.DLL error message.
PMR 66806 49R 000	Problem synchronizing tasks in GWA PMOR3.
PMR 69790 999 000; APAR# PK14654	Resource rates in Monthly Resource Utilization pivot do not reflect the actual rate in the past.
PMR 70483 999 672	Timesheet default step crash RPM application.
PMR 74441 999 000; APAR# PK22315	Task can have same resource assigned twice.
PMR 78365 49R 000	Some e-mail alerts repeatedly sent to incorrect users.
PMR 85009 49R 000; APAR# PK22798	RPM 6212: Cannot import projects from MSP to RPM.
PMR 85203 49R 000; APAR# PK22980	Unhandled Exception: EAccessViolation when viewing template project portlets.
PMR 86506 422 000; APAR# PK22118	Missing task assignments.
PMR 88266 422 000	Calculate/Copy date error.
PMR 89544 49R 000; APAR# PK25213	Issue converting summary tasks to deliverables.
PMR 89808 49R 000	API web services installation guide is not complete.
PMR 00154 SGC 821	Unhandled exception error in RPM API.

Chapter 3. Installing metrics capabilities for Rational Portfolio Manager

This chapter tells you how to install the Rational Portfolio Manager integration with Rational ProjectConsole. This integration enables metrics capabilities for Rational Portfolio Manager. The following topics are presented:

- Installation overview
- System requirements
- Configuration instructions
- Installation verification

Overview of enabling metrics features

Metrics features are available to users of Rational Portfolio Manager through an integration with Rational ProjectConsole. Before you can begin setting up metrics features and configuring the integration, your site must have existing installations of Rational Portfolio Manager and Rational ProjectConsole. The integration with Rational Portfolio Manager feature must have been installed as part of the Rational ProjectConsole installation.

The overall installation process is outlined in the section “Overview of the installation process” on page 10.

Related documentation

Refer to the following documents for information on installing Rational Portfolio Manager and Rational ProjectConsole. These documents are available as part of product installation media, or from the IBM Publications Center.

To locate the publications center for your area, go to <http://www.ibm.com> and search on the term **Publications center**. Follow the instructions at your Publications center site to locate individual documents.

Rational Portfolio Manager

Rational Portfolio Manager Installation Guide for Windows, version 7.0

Rational Project Console

- *IBM Rational ProjectConsole Installation and Upgrade Guide, release 7.0*
- *IBM Rational ProjectConsole Release Notes, release 7.0*

Work flow and installation considerations

As a prerequisite to installing the integration, your site must have Rational Portfolio Manager and Rational ProjectConsole installed. For the Rational ProjectConsole installation, the feature **Rational Portfolio Manager Integration** must have been selected to be included in the installation. Each product must be installed on separate machines.

There are two scenarios you might follow:

- For collecting data from Rational Portfolio Manager alone, install Rational ProjectConsole servers (Dashboard RMI Server, Collection RMI server, Dashboard Metrics-Web Service) on a Windows machine. In this case Rational ProjectConsole can collect data solely from Rational Portfolio Manager.

- For collecting data from Rational Portfolio Manager and other products, such as Rational ClearQuest, install Rational ProjectConsole Servers (Dashboard RMI Server, Dashboard Metrics-Web Service) on a Windows machine, and install Rational ProjectConsole collection servers on a second Windows machine. This machine is the same one as the machine that has Rational Suites products installed on it.

After installation, configure and set up Rational ProjectConsole to collect data from Rational products and Rational Portfolio manager.

Note that data can be collected only for Rational Portfolio Manager projects that have been explicitly enabled for metrics capabilities. For information about enabling Rational Portfolio Manager projects for metrics collection, see the help topic, “Publishing Projects for Metrics Collections,” in Rational Portfolio Manager help.

Based on your configuration, collections are run periodically to collect data from Rational Portfolio Manager or other products. The data warehouse is populated with the collected information.

Use the Metrics Designer in Rational Portfolio Manager to work with data in the warehouse. The Metrics Designer is the project data analysis component of Rational Portfolio. With administrator privileges, you can use it to create metrics charts and add to them various types of metrics displays that present collected data. The Metrics Designer also provides mechanisms for authorizing specific users (project groups) to access each of the metrics charts.

The Metrics Portal component of Rational Portfolio Manager is used to view metrics charts.

Overview of the installation process

This section provides an overview of the steps to follow to build a Rational Portfolio Manager site that includes metrics features. Metrics features are available only for Windows installations.

Note: You must have Rational Portfolio Manager and Rational ProjectConsole installed and configured before completing the tasks described in this chapter.

These are the general steps of the installation:

1. Install Rational Portfolio Manager 7.0 as described in the *IBM Rational Portfolio Manager Installation Guide* for Windows.
2. Install Rational ProjectConsole on a separate Windows system. Be sure to select **Rational Portfolio Manager Integration** as one of the Rational ProjectConsole Manager features to install.
3. Configure your Rational Portfolio Manager installation for use with the integration. Steps include:
 - Configuring the Rational Portfolio Manager middleware. See “Configuring Rational Portfolio Manager middleware” on page 11 for detailed instructions.
 - Configuring the RPMPJC web service See “Deploying and configuring RPMPJC web services” on page 12 for detailed instructions.
4. Configure security features for Rational ProjectConsole and Rational Portfolio Manager components. See “Configuring security features (HTTPS)” on page 14 for detailed instructions.

5. Verify that your installation has been successful. See “Verifying the installation” on page 27 for detailed instructions.

The next sections describe system requirements for installation, the procedure for installing the metrics enablement package, and post-installation configuration information.

System requirements

This section presents system requirements for installation.

Software requirements

Your system must have the following software installed and configured:

- Release 7.0 of Rational ProjectConsole, including the **Rational Portfolio Manager Integration** feature.
- Version 7.0 of Rational Portfolio Manager.

Configuring Rational Portfolio Manager middleware

Perform the following changes to your Rational Portfolio Manager middleware installation.

- Update the PJCserver.ini file.
- Modify the com.ibm.rpm.SPListener.properties file.

These changes are typically made by a system administrator or a Rational Portfolio Manager administrator with permission to modify Rational Portfolio Manager middleware.

Updating the PJCserver.ini file

The PJCserver.ini file is used to allow Rational Portfolio Manager to automatically log in to the Rational ProjectConsole server. In this step, you will modify the file to include information that identifies the server to log in to.

You must have permission to modify Rational Portfolio middleware for this procedure.

1. Open the PJCserver.ini file in a text editor. The PJCserver.ini file is located in the applications server directory on the machine on which Rational Portfolio Manager is installed. For example, if you are using a Tomcat web application server, the file can be located in the web-inf\classes directory.
2. The file identifies the location of an installed Rational ProjectConsole server so that it is able to log Rational Portfolio Manager automatically in to Rational ProjectConsole. Edit the PJCserver.ini file to contain values for the following:
 - The protocol (default is http)
 - The hostname
 - Port (default is 80)
 - Username and password used to log into Rational ProjectConsole

A typical PJCServer.ini file looks like this, where *myhost* is the name of your Rational ProjectConsole server machine:

```
# PjC Server configuration file
Protocol=http
HostName=myhost or IP_address_of_ProjectConsole_server
Port=80
Username=ratadmin
Password=ratadmin
```

If you are setting up secure HTTP connections, typical values would be:

```
# PjC Server configuration file
Protocol=https
HostName=myhost or IP_address_of_ProjectConsole_server
Port=443
Username=ratadmin
Password=ratadmin
```

For more information about setting HTTP connections, see “Enabling HTTP communication” on page 13. For more information about setting secure connections, see “Configuring security features (HTTPS)” on page 14.

Modifying com.ibm.rpm.SPListener.properties

Follow this procedure if your installation uses the WebSphere application server.

The com.ibm.rpm.pjc.SPListener file is located in *WebSphere-install-path*\InstalledApps\[host]\IBMRPM.ear\ IBMRPM.war\WEB-INF\classes\com.ibm.rpm.SPListener.properties. The file allows the WebSphere application server to connect to the DB2 stored procedures for the purposes of accessing the Rational ProjectConsole charts.

1. Open the file in a text editor and uncomment the last line in the file to appear as follows:

```
#IBMRPM40.SP_LOGON=com.ibm.rpm.auth.AuthListener
#IBMRPM40.SP_I_POOL=com.ibm.rpm.auth.AuthListener
PJC=com.ibm.rpm.pjc.PjCListener
```

2. Stop and restart the WebSphere Application Server.

Deploying and configuring RPMPJC web services

This section describes installing RPMPJC web services and configuring the connectionpool.ini file.

Installing the RPMPJC web service

Metrics enablement relies on an integration of Rational Portfolio Manager and Rational ProjectConsole. To install web services for the integration:

1. Deploy Rational Portfolio Manager/Rational ProjectConsole web services onto the Rational Portfolio Manager Web Application server using the RPMPJCWebserviceEAR.ear file. Copy the file from the installation sources at PACKAGE_HOME\PJC_METRICS\RPMPJCMETRICS.
2. See further instructions for your web application server at these locations:
 - See <http://jakarta.apache.org/tomcat/index.html> for information on Tomcat deployment
 - See <http://publib.boulder.ibm.com/infocenter/wasinfo/v5r1//index.jsp> for information on WebSphere.

You can deploy on a web server using a nonsecure protocol (HTTP) or a secure protocol (HTTPS). For more information, see “Enabling HTTP communication” on page 13 and “Configuring security features (HTTPS)” on page 14.

Updating the ConnectionPool.ini file

The ConnectionPool.ini file contains settings that enable the Rational Portfolio Manager middleware to access the Rational Portfolio Manager database. There is a separate ConnectionPool.ini file for the IBMRPM web application and the RPMPJCWebService web application. These files are located in the WEB-INF/classes folder of each web application. Both files should be identical except for the DataSourceName property.

The following instructions assume that the IBMRPM web application has already been properly configured and that users can successfully log into Rational Portfolio Manager using the Rational Portfolio Manager client.

1. Backup the ConnectionPool.ini file located in the WEB-INF/classes folder of the RPMPJCWebService web application.
2. Copy the ConnectionPool.ini file from the WEB-INF/classes folder of the IBMRPM web application to the WEB-INF/classes folder of the RPMPJCWebService web application.
3. Edit the ConnectionPool.ini file located in the WEB-INF/classes folder of the RPMPJCWebService web application and reset the DataSourceName property to RPMPJCWebService.
`DataSourceName=RPMPJCWebService`
4. Stop and restart the RPMPJCWebService web application (or restart your Rational Portfolio Manager application server).

Enabling HTTP communication

You can utilize HTTP or HTTPS protocol for communication between the Rational Portfolio Manager and Rational ProjectConsole servers. This section describes how to enable HTTP communication.

Communication is from:

- The Rational ProjectConsole Designer, installed on the Rational ProjectConsole server, to the RPMPJCWebService, installed on the Rational Portfolio Manager application server.
- The middle tier of Rational Portfolio Manager to the PjCMetricsWebService, which is the middle tier of Rational ProjectConsole.

Instructions on configuring the Rational ProjectConsole Designer, the Rational ProjectConsole metrics collection agent, the RPMPJCWebService web application, and the IBMRPM web application are in the following sections.

To enable HTTP communication from the Rational Portfolio Manager server to the Rational ProjectConsole server

To enable HTTP communication from the Rational Portfolio Manager server to the Rational ProjectConsole server, do the following:

1. Open the PJC.properties file on the Rational ProjectConsole server in a text editor. The file is located in:
`C:\Program Files\Rational\Common\rwp\EmbeddedExpress\profiles\profile1\installedApps\DefaultNode\PJCWASAPP.ear\PJCWeb.war\WEB-INF\classes.`
2. Add the pjc.ALLOW_HTTP flag to the file and set it to True. For example:
`pjc.ALLOW_HTTP=True`
3. Open the PJC.properties.orig file on the Rational ProjectConsole server in a text editor. The file is located in

```
C:\Program Files\Rational\Common\rwp\EmbeddedExpress\profiles\profile1
  \installedApps\DefaultNode\PJCWASAPP.ear\PJCWeb.war\WEB-INF\classes.
```

4. Add the `pjc.ALLOW_HTTP` flag to the file and set it to `True`. For example:
`pjc.ALLOW_HTTP=True`
5. Restart Rational Web Platform using the `rwp_restart.bat` command located in the `C:\Program Files\Rational\Common\rwp\bin` folder.:
6. Edit the `PjCServer.ini` file located in the `WEB-INF\classes` folder of the IBMRPM application on the Rational Portfolio Manager application server. Set the protocol to `HTTP` and set the port number to the `HTTP` port of the `ProjectConsole` (port 80 by default). For example:

```
# PjC Server configuration file
Protocol=http
...
Port=80
```
7. Restart the IBMRPM web application on the Rational Portfolio Manager application server.
8. Log into the Rational Portfolio Manager client and display the chart templates or display a Rational `ProjectConsole` chart in My Portal.

To enable HTTP communication from the Rational ProjectConsole Designer to the Rational Portfolio Manager server

To enable HTTP communication from the Rational ProjectConsole Designer to the Rational Portfolio Manager server, do the following:

1. Edit the `protocol.ini` file located in the `WEB-INF\classes` folder of the `RPMPJCWebService` application on the Rational Portfolio Manager application server.
2. Set the `ALLOW_HTTP` flag to `True`.
3. Restart the `RPMPJCWebService` application.
4. Start the Rational ProjectConsole Designer application on the Rational ProjectConsole server.
5. Create a new connection profile, or edit an existing connection profile. Set the protocol to `HTTP` and set the port number to the `HTTP` port configured on the Rational Portfolio Manager application server.
6. For any Rational ProjectConsole collection tasks that collect metrics from Rational Portfolio Manager, modify the task's properties to set the protocol to `HTTP` and to set the port to the `HTTP` port configured on the Rational Portfolio Manager application server. Typically, this port number is 80.
7. Verify that the Designer can successfully log in.

Disabling HTTP communication

To disable HTTP communication and to enable HTTPS communication between the Rational Portfolio Manager server to the Rational ProjectConsole server, see the section "Configuring security features (HTTPS)."

Configuring security features (HTTPS)

This section tells you how to set up security features for the integration. To do so, you must create and install separate security certificates for the Rational ProjectConsole server and for the Rational Portfolio Manager server. You must also configure the component that uses the services to accept the services' security certificate. This means, for example, that the Rational Portfolio Manager server,

which also acts as a component the uses Rational ProjectConsole server services, must be configured to recognize and accept the security certificate you have set up for the Rational ProjectConsole server.

The steps for configuring security features are:

1. "Create self-signed security certificates" on the Rational Web Platform of your Rational ProjectConsole server.
2. "Configure the Rational Web Platform to accept HTTPS" on page 25.
3. "Restart the Rational Web Platform and Rational ProjectConsole services" on page 25.
4. "Import the Rational ProjectConsole security certificate to the Rational Portfolio Manager server" on page 25.
5. "Configure the Rational Portfolio Manager application server to accept HTTPS" on page 26.
6. "Generate a security certificate on the Rational Portfolio Manager application server" on page 26.
7. "Import the Rational Portfolio Manager security certificate to the Rational ProjectConsole server" on page 26.

Each step is described in more detail in the following sections.

Create self-signed security certificates

Create a self-signed security certificate for the Rational ProjectConsole server

On the Rational ProjectConsole server, using the HTTP Server Key Management Utility tool, create a self-signed certificate to be imported on the Rational Portfolio Manager servers. Access to the Rational ProjectConsole server is limited to those Rational Portfolio Manager servers to which the certificate has been imported.

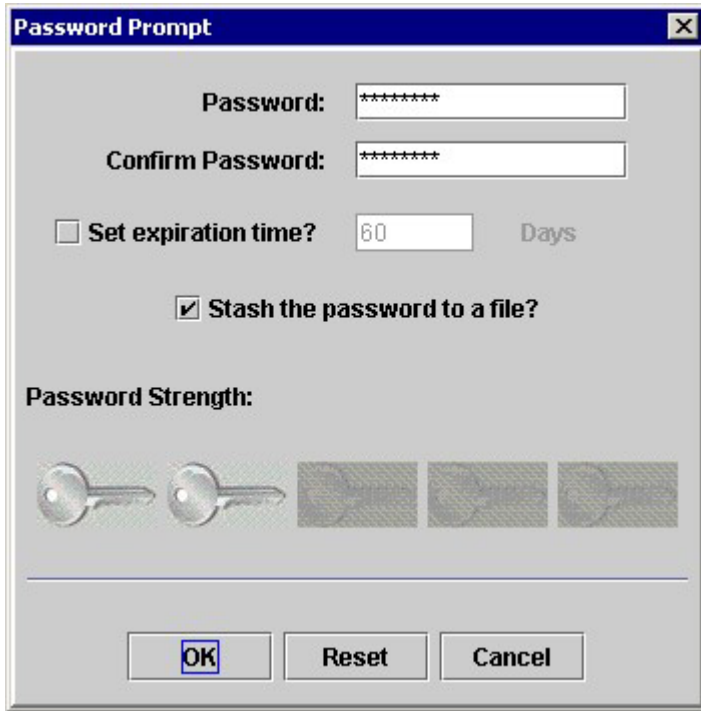
1. Log on to the Rational ProjectConsole server.
2. To launch the HTTP Server Key Management Utility tool, click **Start > Programs > IBM HTTP Server > Start Key Management Utility**
3. Click **Key Database File > New**. Enter the following information:
 - For **Key database type**, select CMS
 - For **File Name**, specify key.kdb
 - For **Location**, specify C:\Program Files\Rational\Common\rwp\IHS\, or the appropriate installed location for your site.

The screen should appear as follows:

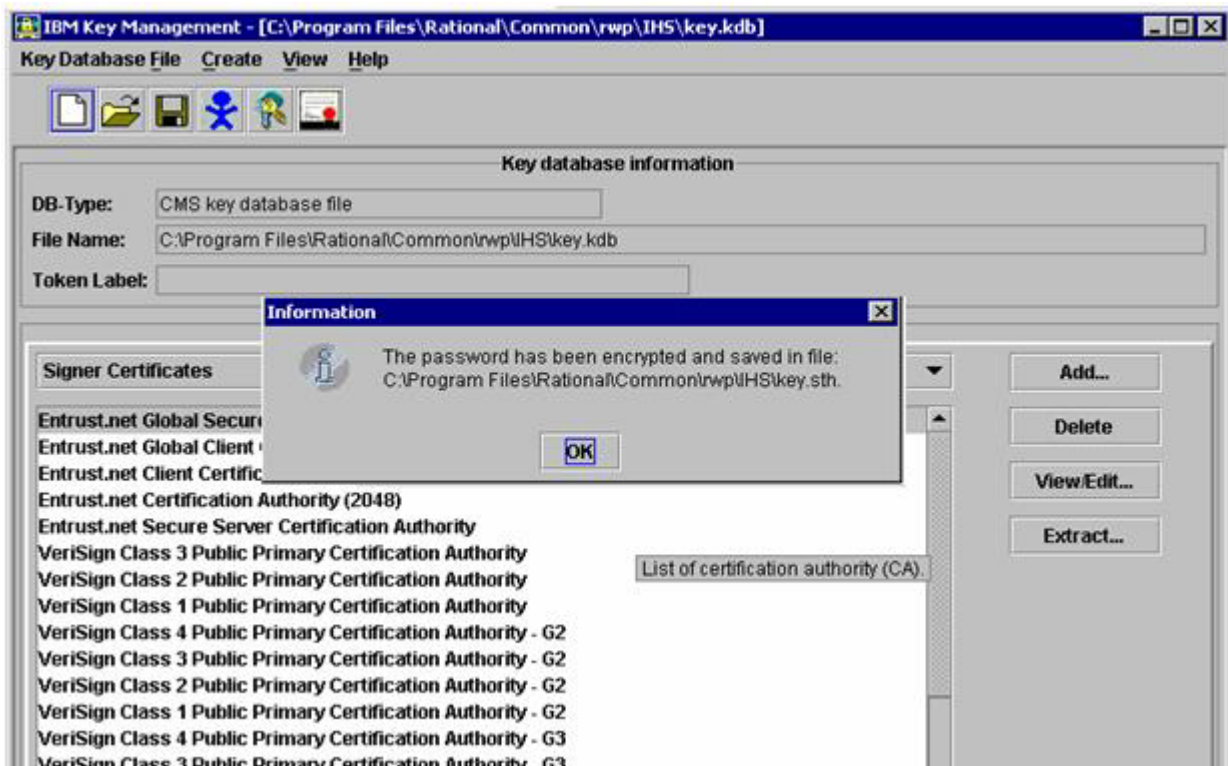


Click **OK**.

4. The Password Prompt window is displayed.
 - a. At the password prompt, type the password for Rational ProjectConsole server.
 - b. Select **Stash the password to a file**, and then click **OK**.



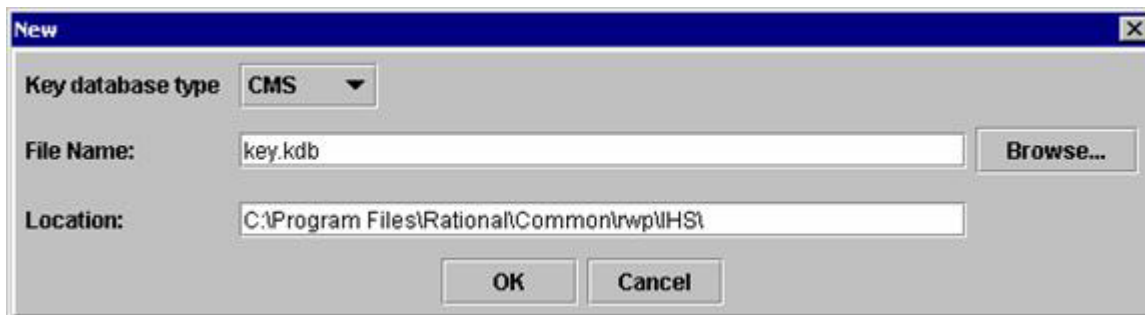
5. Click **OK**, when you see the following screen displayed.



Create a self-signed security certificate for the IBM HTTP server

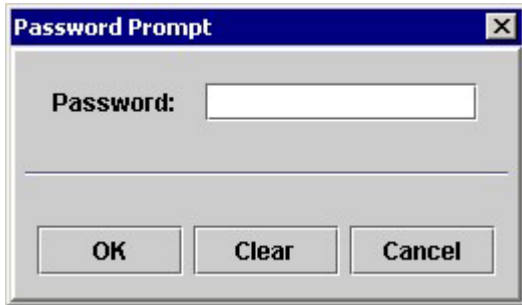
1. Launch the HTTP Server Key Management Utility tool, click **Start > Programs > IBM HTTP Server > Start Key Management Utility**
2. Click **Key Database File > New**. Enter the following information:
 - For **Key database type**, select **CMS**
 - For **File Name**, specify **key.kdb**
 - For **Location**, specify **C:\Program Files\Rational\Common\rwp\IHS**, or the appropriate installed location for your site.

The screen should appear as follows:

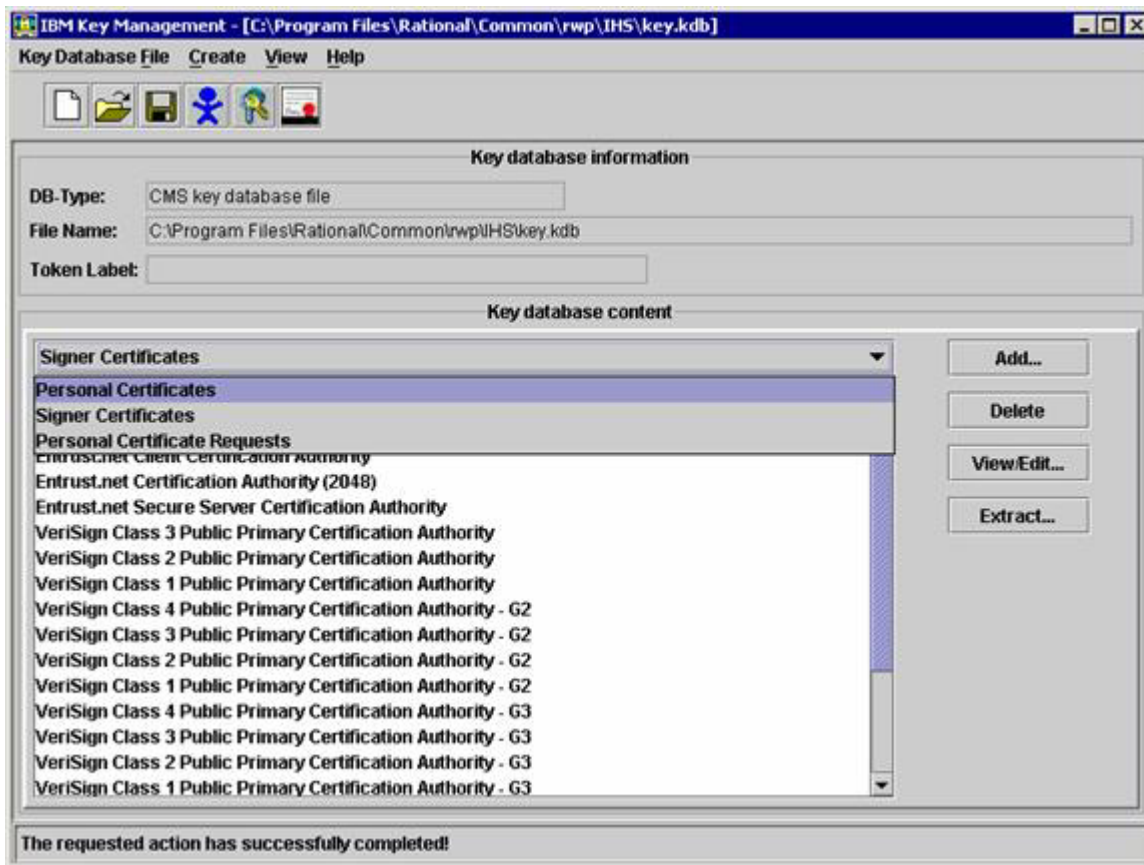


Click **OK**.

3. The Password Prompt window is displayed. Type the password for the IBM HTTP server and click **OK**.

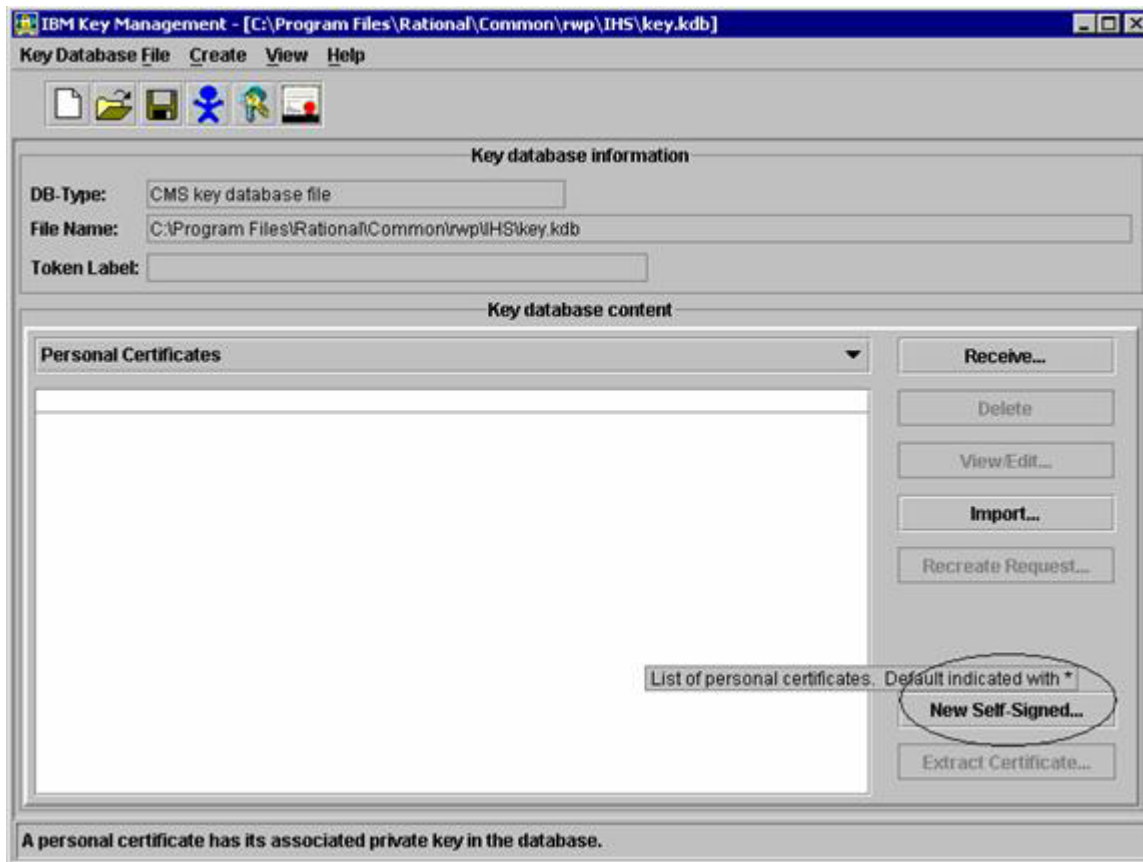


4. The following screen is displayed:

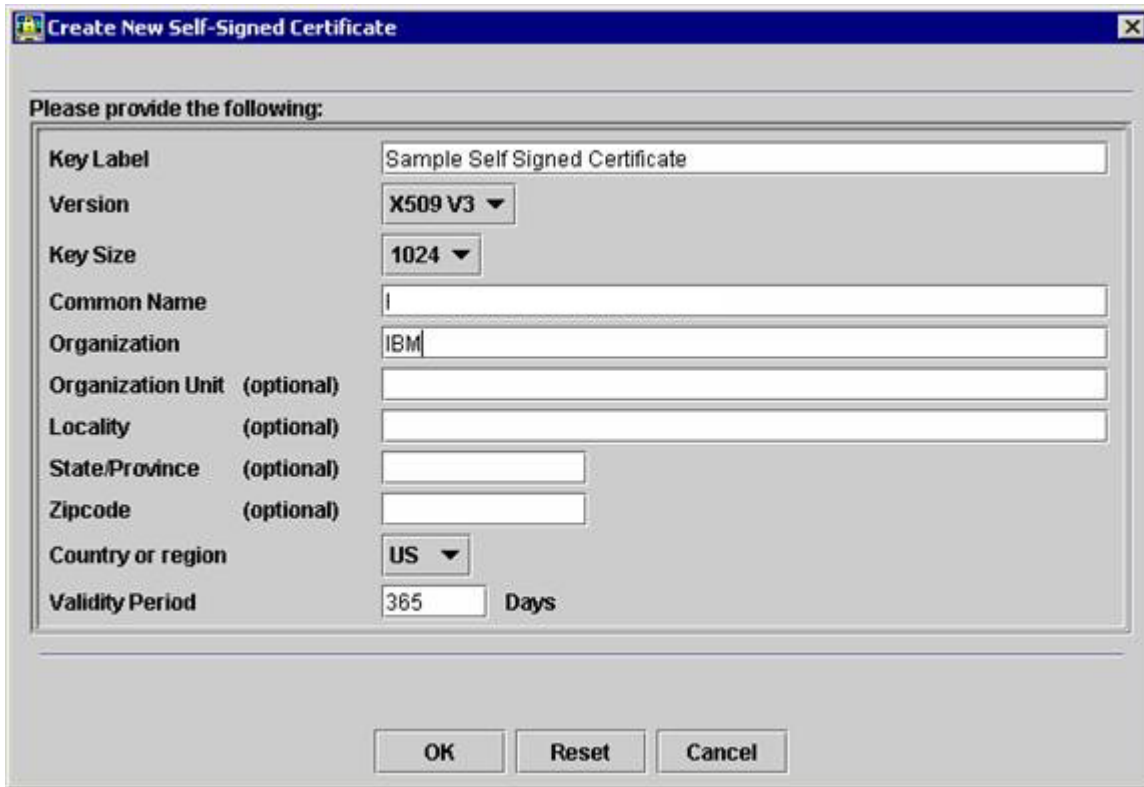


Click **Signer Certificates** from the Key database contents area, and select **Personal Certificates** from the menu.

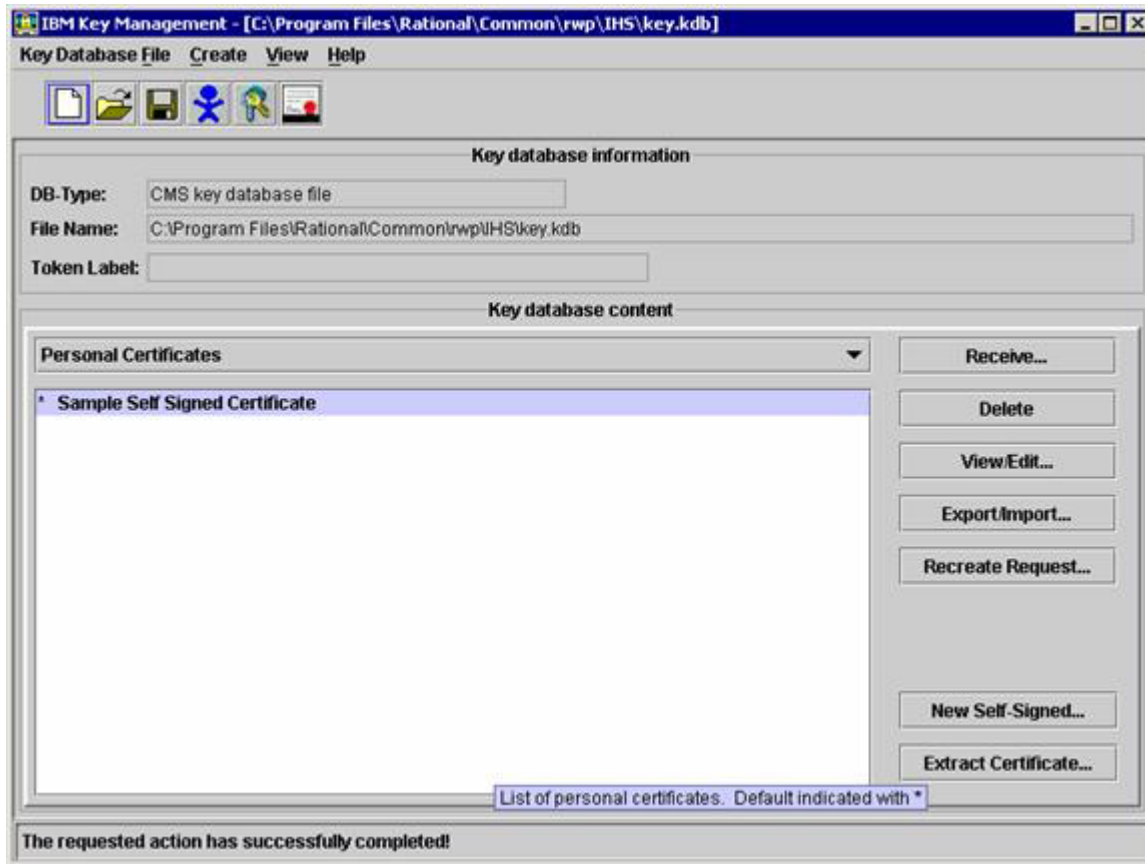
5. When the following screen is displayed, click **New Self-Signed...**



6. At the Create New Self-Signed Certificate screen, supply the following information:
- A **Key Label** name. The label name is used as an alias while importing and exporting certificates.
 - A **Common Name**. The common name must be unique, either an IP address or a machine name. This field is required.
 - Your organization's name.
- Click **OK**.



7. The following screen is displayed, indicating the requested action completed successfully.



8. Close the IBM Key Management Application.
9. Open the file `<installdir>\Program Files\Rational\common\rwp\IHS\conf\ssl.conf`. Verify that the path of the kdb file is correct. The contents should look like the following:


```
KeyFile "C:/Program Files/Rational/common/rwp/IHS/key.kdb"
```
10. Restart Rational Web Platform by running the `restart_rwp.bat` script located on the Rational ProjectConsole server in the `<installdir>\Program Files\Rational\Common\rwp\bin`.

Create a .crt file for the Rational Portfolio Manager JRE

In order to get the .crt file, which we have to put in the Rational Portfolio Manager middleware's JRE, save the key.kdb as .jks file using the same IBM Key Management utility, using the following steps:

1. Launch the HTTP Server Key Management Utility tool, click **Start > Programs > IBM HTTP Server > Start Key Management Utility**.
2. Click **Key Database File > New**. Enter the following information:
 - For **Key database type**, select CMS
 - For **File Name**, specify key.kdb
 - For **Location**, specify `C:\Program Files\Rational\Common\rwp\IHS`, or the appropriate installed location for your site.

The screen should appear as follows:

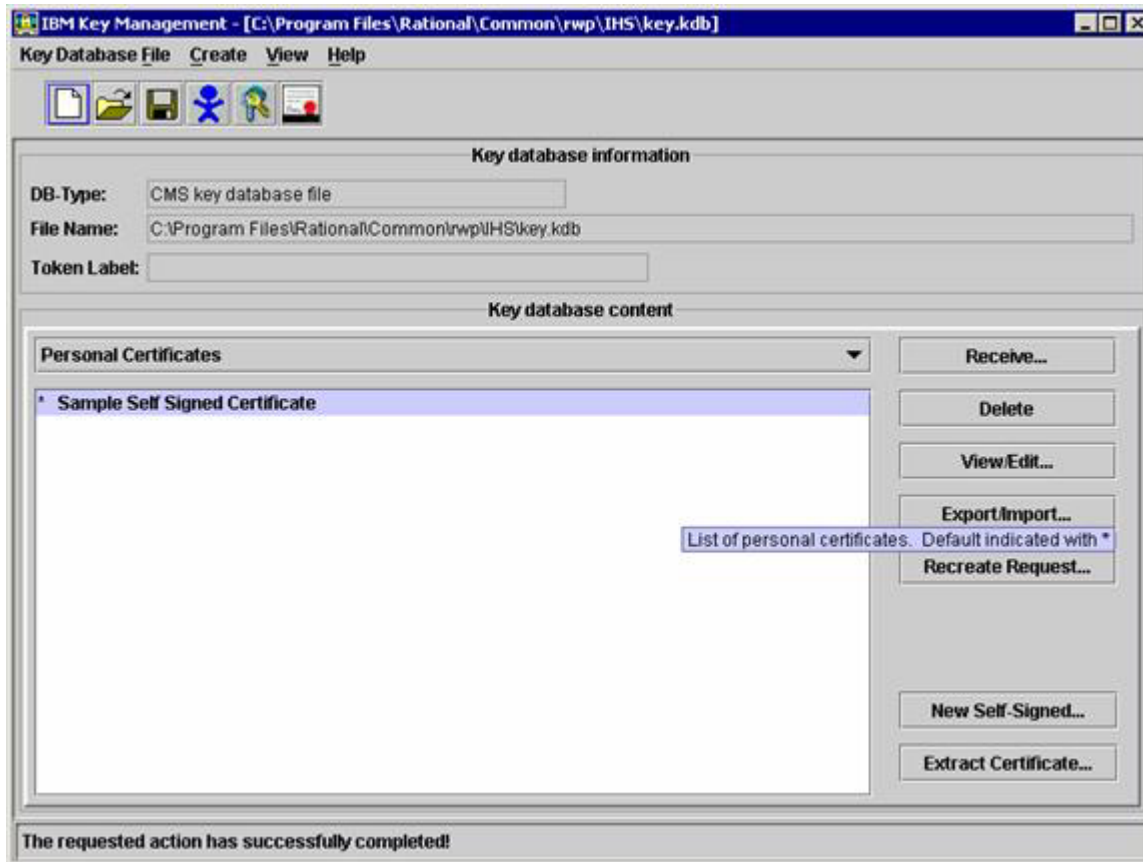


Click **OK**.

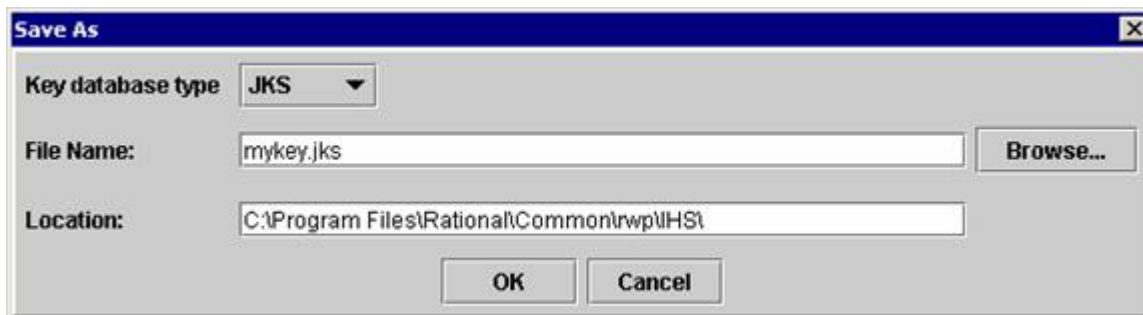
3. The Password Prompt window is displayed. Type the password for the IBM HTTP server and click **OK**.



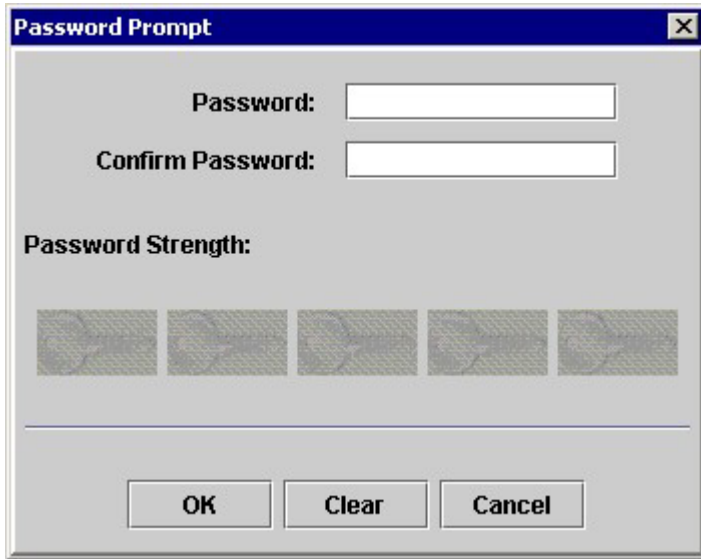
4. From the Key Database File menu at the top of the following screen, click **Key Database File > Save As**.



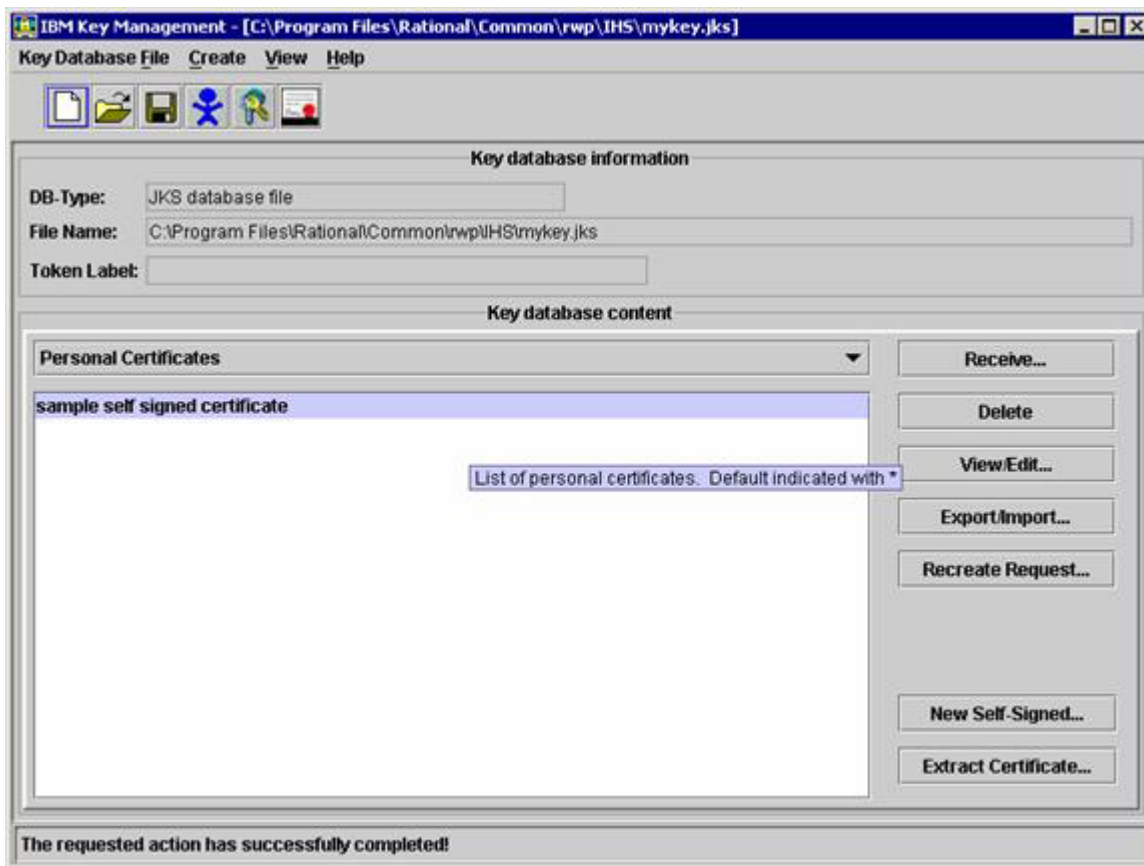
5. At the Save As screen:
 - Select JKS as the **Key database type**.
 - For **File Name**, type in your file name. The sample screen shows mykey.jks.
 - Specify a value for **Location** as shown in the sample screen that follows.
 Click **OK**.



6. A Password Prompt window is displayed. Create and confirm a password. Then click **OK**.



7. The following screen is displayed, indicating that the requested action has completed successfully.



8. Open a Windows Explorer window and verify that mykey.jks has been created in the C:\Program Files\Rational\Common\rwp\IHS directory.
9. Close the IBM Key Management tool.

Configure the Rational Web Platform to accept HTTPS

To configure the Rational Web Platform to accept HTTPS:

1. Navigate to the following folder through Microsoft® Windows Explorer: *<Install Drive>*Program Files\Rational\Common\rwp\ihs\conf.
2. Open the httpd.conf file with Notepad.
3. Locate the line `Include conf/ssl.conf` and uncomment it.
4. Save and close the httpd.conf file.

Note: By default, Rational Web Platform uses port 443 for HTTPS/SSL communication.

Restart the Rational Web Platform and Rational ProjectConsole services

To restart the Rational Web Platform:

- Run the `restart_rwp.bat` script located on the Rational ProjectConsole server in the *<install_dir>*\Program Files\Rational\Common\rwp\bin folder.

Import the Rational ProjectConsole security certificate to the Rational Portfolio Manager server

To install a Rational ProjectConsole security certificate for the IBMRPM web application on the Rational Portfolio Manager application server:

1. Copy the `mykey.jks` file from the `C:\Program Files\Rational\common\rwp\ihs` folder on the Rational ProjectConsole web server to the `java\jre\lib\security` folder of the Java runtime used by the Rational Portfolio Manager application server. (The JRE used by the Rational Portfolio Manager application server is typically located within the Java folder in the application server directory. On IBM WebSphere, it would be located under `...\WebSphere\AppServer\java\jre...`).
2. Verify that the `cacerts` file is not write-protected by right-clicking and selecting **Properties**.
3. Open a windows command prompt.
 - a. Click **Start > Run**.
 - b. Type `CMD` and click **OK**.
4. At the command prompt, change directories to the security folder for the JVM used for the Rational Portfolio Manager middleware. For example:

```
cd <Install Drive>\Program Files\Rational\Common\Java\JRE\LIB\Security
```

Your exact directory path depends on the application server software you are using. Press Enter.

5. At the command prompt, type:

```
keytool -export -file mycert.crt -keystore mykey.jks -alias "Sample Self Signed Certificate"
```

When prompted, enter the keystore password: `changeit`. A message of the following form is displayed:

```
Certificate stored in file <mycert.crt>
```

6. Continuing from the command prompt, type:

```
keytool -import -file mycert.crt -keystore cacerts -alias "Sample Self Signed Certificate"
```

When prompted, enter the keystore password: changeit. A summary message is displayed. Verify that the information is correct, and type yes, when you see the prompt, **Trust this certificate?**. The following informational message is displayed:

```
Certificate was added to keystore
```

Configure the Rational Portfolio Manager application server to accept HTTPS

The exact steps to configure the RPMPJCWebService application on your Rational Portfolio Manager application server vary depending on which application server and version you are running. For WebSphere, here are the basic steps to perform:

1. Create a keystore to contain the Rational Portfolio Manager server security key using the **Key Management Utility**, usually located on the **Start > IBM HTTP Server** menu.
2. Create a self-signed security certificate and import the certificate into the keystore you just created.
3. Create a new SSL alias for the RPMPJCWebService web application and configure the SSL alias to utilize the same keystore.
4. Ensure that the virtual host used by the RPMPJCWebService web application contains your SSL port and ensure that the protocol is set to SSL.
5. Update HTTP transport for the application server and configure the SSL port for the virtual host used by the RPMPJCWebService to use the SSL alias created in step 3.

Consult the documentation for your application server vendor for further instructions on configuring the application server to accept HTTPS.

Generate a security certificate on the Rational Portfolio Manager application server

Consult the documentation for your application server vendor for instructions on configuring the application server to accept HTTPS.

Import the Rational Portfolio Manager security certificate to the Rational ProjectConsole server

To import the certificate on the Rational ProjectConsole server:

1. Get the security certificate file used to configure the Rational Portfolio Manager application server. The specifics of how to do this depend on the application server being used and the way it is configured.

The certificate can be extracted from a Java™ keystore file by using the **keytool** command. This command creates a file named CertificateFileName containing the security certificate.

```
keytool -export -alias keyAliasName -file CertificateFileName -keystore  
keystorename
```

You may also use the Key Management Utility to extract the certificate from the pjcRpmClientKeystore.jks file on the Rational Portfolio Manager application server.

2. To import the certificate to a Rational ProjectConsole server or report server:
 - a. Copy the certificate file to your Program Files\Rational\Rational ProjectConsole\security directory.
 - b. Open a command window and go to the security directory.

- c. Import the certificate using the following command:

```
..\..\common\java\jre\bin\keytool -import -file CertificateFileName -keystore  
pjcrpmClientKeyStore.jks
```
- d. When prompted, use `changeit` as the keystore password. Answer yes when prompted with the question **Trust this certificate?**.

Verifying the installation

Follow these procedures to verify that your installation has completed successfully.

Testing the Rational ProjectConsole Web site

Follow this procedure to verify that Rational ProjectConsole is configured correctly.

1. Open a web browser.
2. Enter the following into the Address bar: `https://ServerName/RationalProjectConsole`. Press Enter.
3. At the login type Admin for the User Name and `changeit` for the Password and press Enter.
4. Click through the warning message.
5. Expand and generate some of the nodes in the Node Tree.

If the reports generate, you have configured the Rational ProjectConsole Server to use HTTPS SSL correctly. If the reports display an error 1230, please verify all the steps in this document and then call IBM Customer Support for Rational ProjectConsole. Remember that HTTP is still enabled on the Rational ProjectConsole server, so the `http://ServerName/RationalProjectConsole` URL is operational.

Testing the Rational Portfolio Manager client

Log on to the Rational Portfolio Manager client to verify the installation is complete. See your system administrator if you need to obtain a Rational Portfolio Manager username and password. The presence of **Chart Templates** as part of the **Administrator** tabs in the Rational Portfolio Manager client indicates a successful installation.

Chapter 4. Migrating to this version

Before you begin

Before you proceed with the migration you need to backup the IBM® Rational Portfolio Manager database. Make sure that total recovery of the database is possible from this backup. All database migration instructions listed below must be done by the instance owner and the user that connects to the database from the web server.

Note: If you were unsuccessful during migration, you need to restore your old database, check the log files to troubleshoot, and restart the migration steps.

Note: All the migration scripts when transferred to AIX® host should preserve their Type/Mode (ASCII/BIN) and Right (file ownership).

Migrating Rational Portfolio Manager on DB2 for UNIX

This section tells you how to migrate the Rational Portfolio Manager database from version 6.1.2.7 to version 7.0.1.1 on DB2® for UNIX.

Prerequisites for migration

- A successful Rational Portfolio Manager version 6.1.2.7 installation
- Rational Portfolio Manager version 7.0.1.1 migration package
- DB2 v 8.2
- DB2 migration is performed through a manual process, the migration steps are carried out using UNIX® shell script. RPM migration procedure is using bourne shell interpreter
- Make sure that all .sh files located under `${MIGRATION_HOME}/Database/DB2/AIX/migration` and `${MIGRATION_HOME}/Database/DB2/AIX/csp` have execute rights

Definition of terms used in this section

- **Instance Owner:** is the user owning the DB2 Instance which is defined as logical database server environment.
- **Connected User:** is the user who connects to database from web application and has been granted rights to make update, insert, delete, select on database tables. Connected User can be the instance owner too.

You can migrate the database using the schema of your choice:

- Scenario 1: All tables are created using the user name of the instance owner as schema. The instance owner is the user who connects to database from the web application.
- Scenario 2: All tables are created using the user name of the instance owner as schema. The connected user is the user who will be connecting to the database from the web application. The table aliases are created for the connected user. The alias names are created using the user name of the connected user as alias names.

Note: You should choose the scenario that you are using with your current RPM database.

The migration process is carried out through scripts by supplying all the corresponding values for parameters. A message is displayed for each step and a log file is created for each step that you might need to look at in case of unsuccessful migration. You will be asked a series of questions to provide values for parameters.

The log files are located in `${MIGRATION_HOME}/Database/DB2/AIX/migration` and `${MIGRATION_HOME}/Database/DB2/AIX/csp` folders. There is one main script file called `migration70.sh` which carries out all the steps for migration. At the end of migration you will be given a choice either to select Yes to import RUP® 2003 data or No to cancel it.

Migration steps

1. Stop the web application and the Alert server associated with the RPM database.
2. Copy `ibmrpm.so` from `${MIGRATION_HOME}/Database/DB2/AIX/csp` to `${INSTHOME}/sql1lib/function/` directory prior to migration, where `${INSTHOME}` is the path to DB2 instance directory where DB2 is installed.

Note: Make sure you have a backup of your current library files before copying these files.

- If you are using scenario 2, open `migration6127.sql` from `${MIGRATION_HOME}/Database/DB2/AIX/migration` folder for editing
- Find/replace `GET_UNIQUE_ID()` with `CONNECTED_USER.GET_UNIQUE_ID()` where `CONNECTED_USER` is the user name of the connected user who connects to RPM database from the web application.
- Save the file.
- Increase the size of `TS_INDEX` tablespace of RPM database before continuing with migration.

Note: During the migration, your `TS_INDEX` TBS might run out of space. It is highly recommended to tailor the size of `TS_INDEX` TBS prior to migration. The following formula can be used to determine the right number for your tablespace definition:

$$\text{Tablespace size} = (\text{average row size} + 8) * \text{no of rows} * 2.50$$

3. Go to `${MIGRATION_HOME}/Database/DB2/AIX/migration` and run:
`./migration70.sh`

Steps used when migrating from version 6.1.2.7

Here are the steps and the names of log files created for each step of migration process:

1. Checks for the version number in RPM database table to decide from which RPM version the migration has to be done
2. Stops and starts RPM database
3. Drops the triggers of RPM v6.1.2.7 database > `drop_triggers61.out`
4. If using Scenario 2, it drops aliases > `drop_alias61.out`
5. It starts the migration process:
 - `v6.1.2.7 > migration6127.out`

6. Creates aliases if using Scenario 2 > alias70.out
7. Grants rights if using scenario 2 to user accessing RPM database > grants70.out
8. Creates triggers for RPM v 7.0.1.1 > triggers70.out
9. Creates stored procedures for v 7.0.1.1 > createsp.out
`${MIGRATION_HOME}/Database/DB2/AIX/csp`
10. Binds RPM v 7.0.1.1 code > bindall.out
`${MIGRATION_HOME}/Database/DB2/AIX/csp`
11. Runs some stored procedures to insert records into RPM database tables > custom_pivot_initdb.out
12. If you choose to import RUP 2003 templates, then it executes all the steps through step 19, otherwise goes directly to step 20:

Note: If you already have RUP 2003 in your database you SHOULD NOT import RUP 2003 in your database again.

- drops triggers > drop_triggers70.out
13. Imports RUP data part 1 > db2move1.out
`${MIGRATION_HOME}/Database/DB2/AIX/migration/move1`
 14. Imports RUP data part 2 > db2move2.out
`${MIGRATION_HOME}/Database/DB2/AIX/migration/move2`
 15. Runs RUP 2003 migration > rupmigration.out
 16. Drops RUP 2003 temporary tables > dropruptables.out
 17. Creates triggers > triggers70.out
 18. Runs statistics on tables > Reorgstats70.out
 19. Checks for successful migration > Output will be displayed on the screen

Note: If the output file contains 7.0.1.1, the migration is successful, if not, then verify all the log files. In any case it is recommended to check all the log files.

Note: During the migration steps you might see the following SQLSTATE numbers in your log files. These can be ignored since they are only warnings:

- SQLSTATE=02000 (...the result set of the query is an empty table)
- SQLSTATE=42704 (...is an undefined name)

Deploying Rational Portfolio Manager Application Server

Note: Before proceeding with middleware deployment, make sure you backup the IBMRPM.ear directory located under `${IBMRPM_EAR_HOME}`.

Refer to your installation document for deploying IBMRPM.ear located under `${MIGRATION_HOME}/WebServer` directory.

After deploying you need to edit ConnectionManager.ini and ConnectionPool.ini located under `${IBMRPM_EAR_HOME}/IBMRPM.war/WEB-INF/classes/conf` directory.

Modifying the ConnectionPool.ini file

Modify settings in the ConnectionPool.ini file as described in the next procedures. Remove the pound character (#) to uncomment any lines in the file needed for your site's configuration. Settings in this file control:

- Datasource configuration
- Connection pool options
- Driver and database options specific to DB2
- Mail alert server settings
- Log file settings

To modify the `ConnectionPool.ini` file:

1. Go to `${IBMRPM_WAR_HOME}/WEB-INF/classes/conf` directory and open `ConnectionPool.ini` for editing.
2. In the **Data Source Configuration** section, set values for the following:


```
DataSourceName=IBMRPM
User=RPM_OWNER or RPM_CONNECTED_USER
Password=RPM_OWNER_PASSWORD or RPM_CONNECTED_USER_PASSWORD
ENC=NO
Dbms=DB2
```
3. In the **Pool Options** section, make these changes or you can use default values:


```
ConnectionPoolSize=pool_size
ConnectionPoolMax=maximum_pool_size
ConnectionUseCount=Number of times a connection can be reused
```

The connection pool size is for the pool managing the connections between the application server and the database server.
4. In the **Driver and Database** section, make the following changes:
 - a. Set values for `JDBCdriver` and `JDBCconnectionURL`. The `IP_DB_SERVER` should reflect the IP address of database server, the `DB_PORT` should reflect the port number of the RPM database, and `DBNAME` should reflect your instance name or database alias of the TCPIP node for `JDBCconnectionURL`:


```
JDBCdriver=com.ibm.db2.jcc.DB2Driver
JDBCconnectionURL=jdbc:db2://IP_DB_SERVER:DB_PORT/DBNAME
```
 - b. Check that these lines are not preceded by the comment character `#`. If they are, remove the `#` character. Also check that all lines in the Oracle section for Driver and Database are commented.
5. In this step you will configure settings for the **Mail Alert Server**. Note that the user name used to connect to the database is the same one used for the IBM Rational Portfolio Manager web application. The host machine (in this case the web server) must have the mail server installed and configured to send e-mail. Table 1 describes each setting.

Table 2. Mail Alert Server Setting

Setting	Notes
<code>EmailHost=EMAIL_HOST_IP_ADDR</code>	Set to the SMTP IP address or server name.
<code>SendInterval=60000</code>	Set <code>SendInterval</code> to the amount of time in milliseconds you want the IBM Rational Portfolio Manager alert e-mails to be sent.
<code>RollupInterval=86400000</code>	Set <code>RollupInterval</code> to the frequency interval you want the application to rollup time-phased projects.
<code>Sender=E-mail_Author</code>	Set <code>Sender</code> to the author of the e-mails.
<code>Subject=E-mail_Subject</code>	Set <code>Subject</code> to specify the subject line of the e-mails that will be sent.

Table 2. Mail Alert Server Setting (continued)

Setting	Notes
AlertsOn=true	Specify whether the alert server is on or off.
ServerName=Host:Port/RPM_Web_context/	Set the ServerName to the IP address or host name:port number of the Web server/Rational Portfolio Manager Web context/.
ConType=http	Specify HTTP as the connection type.
sendIterationTimes=10	Alert send iteration time in seconds.
WorkflowPollingInterval = 60000	Workflow polling interval in seconds.
WFSchedPollingInterval = 60000	Workflow scheduler polling interval in seconds.

6. Save and close the file. The new settings will take effect when the web application server is loaded.

Modifying the log4j.properties file

If you want IBM Rational Portfolio Manager to use its own log files instead of the standard output, you have to configure application logs. You need to set `log4j.threshold=OFF` to `ON`, then you can set one of the following values by removing the comment mark `#`. If the value `log4j.rootLogger=ALL`, `stdout`, `R`, is uncommented, then by default all other values will be enabled:

```
#log4j.rootLogger=DEBUG, stdout, R
#log4j.rootLogger=INFO, stdout, R
#log4j.rootLogger=WARN, stdout, R
#log4j.rootLogger=ERROR, stdout, R
#log4j.rootLogger=FATAL, stdout, R
#log4j.rootLogger=ALL, stdout, R
#log4j.rootLogger=OFF, stdout, R
```

1. Set the path to log file of standard output:
`log4j.appender.R.File=PATH_TO_LOG_FILE/stdout.log`
`PATH_TO_LOG_FILE` is the path to where the log file for standard output is located. For example: `/home/debug/stdout.log`
2. Save and close the file. The new settings will take effect when the web application server is loaded

Modifying the ConnectionManager.ini file

To modify the `ConnectionManager.ini` file:

1. Go to `${IBMRPM_WAR_HOME}/WEB-INF/classes/conf` and open `ConnectionManager.ini` for editing
2. Edit the value for `DSNI` to `DSNI=IBMRPM`
3. Save and close the file

JDBC driver settings

To configure the JDBC driver settings:

1. Copy the `db2jcc.jar`, `db2jcc_license_cisuz.jar`, `db2jcc_license_cu.jar` files from `${DB2TEMPDIR}/JAVA/` to the `${WAS_HOME}/lib` directory, where `${WAS_HOME}` is the path where the web application is installed
For example, `home/IBM/WebSphere/AppServer/lib`

2. After applying these modifications, restart the application server

Verifying the installation

This section describes the process of verifying that the installation is completed and correctly configured.

Validating the database connection

Validate that the connection to the database was successful by opening the `${WAS_HOME}/AppServer/logs/server1/SystemOut.log` file. Look for `ConnectionPool Loaded (####ms)` value. This value validates that the application is connected to the database.

Testing the Web browser connection

To test the Web browser connection:

1. Open a browser window.
2. Go to `http://hostname:portnumber/webapp/IBMRPM/PMOServlet.wss`

You should see the welcome screen for IBM Rational Portfolio Manager.

RPM/PjC installation notes

See Chapter 3, “Installing metrics capabilities for Rational Portfolio Manager,” on page 9.

Deploying RPM Web Services API ear module

The `rpm-web-services-7.0.1.1.ear` and `rpm-web-services-7.0.1.1.war` files are located in the `${MIGRATION_PACKAGE}/WebServicesAPI` folder.

For detail information about RPM Web Services API refer to the API guide located in the `${MIGRATION_PACKAGE}/Documents` folder.

Post install activities

For post install steps refer to `Administration_Guide.pdf` document. The post install files are located under `${MIGRATION_HOME}/Post-Install` directory.

Migrating Rational Portfolio Manager on Oracle for UNIX

This section tells you how to migrate the Rational Portfolio Manager database from version 6.1.2.7 to version 7.0.1.1 on Oracle for UNIX.

It is also possible to run the migration scripts from a remote machine. In this case, you need to make sure you can connect to the remote database using SQLplus.

Note: Rational Portfolio Manager 7.0.1.1 migration script uses SQLplus located under `${ORACLE_HOME}/bin` directory and in case of migrating RUP templates, jar located under `${ORACLE_HOME}/jdk/bin` directory and imp located under `${ORACLE_HOME}/bin` directory. Therefore you should run the migration scripts on a machine that has these utilities.

Prerequisites for migration

- A successful Rational Portfolio Manager version 6.1.2.7 installation
- Rational Portfolio Manager version 7.0.1.1 migration package
- SQLplus, jar, and imp utilities for running Oracle migration scripts

- Oracle migration is carried out through shell script using korn or bash shell environments
- Make sure you have execute rights for mig_owner.sh, mig_con_user.sh, and rup2003.sh files

Migration steps

Rational Portfolio Manager migration to version 7.0.1.1 has 3 steps:

1. Migrating RPM schema owner
2. Migrating RPM connected user (if a connected user is used)
3. Integrating RUP 2003 (optional)

Steps to migrate RPM schema owner

1. Stop the application server associated with the RPM database
2. Shutdown the RPM database
3. Startup the RPM database
4. Tablespaces used in the migration scripts are:
 - PMO_DATA_64K for tables
 - PMO_LOB_64K for lobs
 - PMO_IDX_64K for indexes

Note: If the tablespaces in your RPM database are different from the above mentioned names, you need to change the name of the tablespaces in the migration scripts in the following files:

```

${MIGRATION_HOME}/Database/Oracle/scripts/6.1_to_6.2/step3.sql
${MIGRATION_HOME}/Database/Oracle/scripts/6.2_to_7.0.1.1/step1-6200.sql
${MIGRATION_HOME}/Database/Oracle/scripts/6.2_to_7.0.1.1/plbddl/index.ddl

```

5. Open a shell window and change the directory to `${MIGRATION_HOME}/Database/Oracle` and run `./mig_owner.sh`
Migration script will run and ask you a series of questions:
6. Have you performed pre_migration steps? Before migration you need to backup your database, if you have a backup, answer yes to continue. If you answer no, no migration will be performed
7. The script uses the `ORACLE_HOME` environment variable of the machine which you are running the script from. Enter the required information when prompted
8. Is your RPM database installed on this machine? If you answer no, you will be prompted to enter:
 - TNS string
 - IBMRPM schema owner
 - IBMRPM schema owner password
 If you answer yes, you will be prompted to enter:
 - ORACLE_SID value
 - IBMRPM schema owner
 - IBMRPM schema owner password
9. Are you sure you want to migrate your database now? Answer yes to start the migration
10. At the end of migration you will be provided with migration report. Migration report includes the following information:

- The current version of the database (which at this level must be 7.0.1.1)
- The number of invalid objects in the database (which we expect to be 0)
- The number of objects (needed for 7.0.1.1) for each object type and their status in the migrated RPM database

Note: Comparing the number of objects for each object type in the **YOUR_RPM_DATABASE** and **NUMBER_OF_OBJECTS_MUST_BE** columns helps you to check if the migration has been successful. Obviously we expect these values to be equal.

11. Migration log files will be created under `${MIGRATION_HOME}/Database/Oracle/logs` folder. It is always recommended to look at the log files to see if migration was successful
12. Stop Oracle listener
`${ORACLE_HOME}/bin/lsnrctl stop`
13. `LevelingLib.so` located under `${MIGRATION_HOME}/Database/Oracle/leveling/[your OS/your Oracle version]/` folder must be manually copied to the right location on the database server

Note: If the name of the leveling library that you already have on your server is not `LevelingLib.so` you need to drop the library and create it again with the correct name, then compile invalid objects in the database.

Example:

```
DROP LIBRARY LEVELING_LIB;
CREATE LIBRARY LEVELING_LIB AS 'data2/oracle/ora/bin/LevelingLib.so';
/
```

14. Start Oracle listener
`${ORACLE_HOME}/bin/lsnrctl start`

Steps to migrate RPM connected user

1. Open a shell window and change the directory to `${MIGRATION_HOME}/Database/Oracle` and run `./mig_con_user.sh`
Migration script will run and ask you a series of questions.
2. The script uses the `${ORACLE_HOME}` environment variable of the machine which you are running the script from. Enter the required information when prompted
3. Is your RPM database installed on this machine? If you answer no, you will be prompted to enter:
 - TNS string
 - IBMRPM schema owner
 - IBMRPM schema owner password
 If you answer yes, you will be prompted to enter:
 - Verify the `ORACLE_SID` value
 - Enter IBMRPM schema owner
 - Enter IBMRPM schema owner password
4. Enter RPM connected user name when prompted
5. Enter RPM connected user password when prompted
6. Enter the password for sys user when prompted
7. Are you sure you want to migrate your connected user now? Answer yes to start the migration

8. Migration log files will be created under `${MIGRATION_HOME}/Database/Oracle/logs` folder. It is always recommended to look at the log files to see if migration was successful

Steps to integrate RUP 2003

You can optionally import RUP 2003 templates for your RPM database.

Note: If you already have RUP 2003 in your database you SHOULD NOT import RUP 2003 in your database again.

Here are the steps to import:

1. Verify that you have a tablespace called `PMO_DATA_64K` in your database
2. Verify that `jar`, `sqlplus`, and `imp` exist on your machine. The `jar` should be located under `${ORACLE_HOME}/jdk/bin` and `sqlplus` and `imp` should be located under `${ORACLE_HOME}/bin` directories.
3. Open a shell window and change directory to `${MIGRATION_HOME}/Database/Oracle` and run:
`./rup2003.sh`
4. When you are prompted, enter the required information like the RPM schema owner username, password, and `ORACLE_SID`

Deploying Rational Portfolio Manager Application Server

Note: Before proceeding with middleware deployment, make sure you backup the `IBMRPM.ear` directory located under `${IBMRPM_EAR_HOME}`.

Refer to your installation document for deploying `IBMRPM.ear` located under `${MIGRATION_HOME}/WebServer` directory.

After deploying you need to edit `ConnectionManager.ini` and `ConnectionPool.ini` located under `${IBMRPM_EAR_HOME}/IBMRPM.war/WEB-INF/classes/conf` directory.

Modifying the ConnectionPool.ini file

Modify settings in the `ConnectionPool.ini` file as described in the next procedures. Remove the pound character (`#`) to uncomment any lines in the file needed for your site's configuration. Settings in this file control:

- Datasource configuration
- Connection pool options
- Driver and database options specific to DB2
- Mail alert server settings
- Log file settings

To modify the `ConnectionPool.ini` file:

1. Go to `${IBMRPM_WAR_HOME}/WEB-INF/classes/conf` directory and open `ConnectionPool.ini` for editing.
2. In the **Data Source Configuration** section, set values for the following:

```
DataSourceName=IBMRPM
User=RPM_OWNER or RPM_CONNECTED_USER
Password=RPM_OWNER_PASSWORD or RPM_CONNECTED_USER_PASSWORD
ENC=NO
Dbms=DB2
```

3. In the **Pool Options** section, make these changes or you can use default values:
 ConnectionPoolSize=pool_size
 ConnectionPoolMax=maximum_pool_size
 ConnectionUseCount=Number of times a connection can be reused
 The connection pool size is for the pool managing the connections between the application server and the database server.
4. In the **Driver and Database** section, make the following changes:
 - a. Set values for JDBCDriver and JDBCConnectionURL. The IP_DB_SERVER should reflect the IP address of database server, the DB_PORT should reflect the port number of the RPM database, and DBNAME should reflect your instance name or database alias of the TCP/IP node for JDBCConnectionURL:
 JDBCDriver=com.ibm.db2.jcc.DB2Driver
 JDBCConnectionURL=jdbc:db2://IP_DB_SERVER:DB_PORT/DBNAME
 - b. Check that these lines are not preceded by the comment character #. If they are, remove the # character. Also check that all lines in the Oracle section for Driver and Database are commented.
5. In this step you will configure settings for the **Mail Alert Server**. Note that the user name used to connect to the database is the same one used for the IBM Rational Portfolio Manager web application. The host machine (in this case the web server) must have the mail server installed and configured to send e-mail. Table 1 describes each setting.

Table 3. Mail Alert Server Setting

Setting	Notes
EmailHost=EMAIL_HOST_IP_ADDR	Set to the SMTP IP address or server name.
SendInterval=60000	Set SendInterval to the amount of time in milliseconds you want the IBM Rational Portfolio Manager alert e-mails to be sent.
RollupInterval=86400000	Set RollupInterval to the frequency interval you want the application to rollup time-phased projects.
Sender=E-mail_Author	Set Sender to the author of the e-mails.
Subject=E-mail_Subject	Set Subject to specify the subject line of the e-mails that will be sent.
AlertsOn=true	Specify whether the alert server is on or off.
ServerName=Host:Port/RPM_Web_context/	Set the ServerName to the IP address or host name:port number of the Web server/Rational Portfolio Manager Web context/.
ConType=http	Specify HTTP as the connection type.
sendIterationTimes=10	Alert send iteration time in seconds.
WorkflowPollingInterval = 60000	Workflow polling interval in seconds.
WFSchedPollingInterval = 60000	Workflow scheduler polling interval in seconds.

6. Save and close the file. The new settings will take effect when the web application server is loaded.

Modifying the log4j.properties file

If you want IBM Rational Portfolio Manager to use its own log files instead of the standard output, you have to configure application logs. You need to set `log4j.threshold=OFF` to `ON`, then you can set one of the following values by removing the comment mark `#`. If the value `log4j.rootLogger=ALL, stdout, R` is uncommented, then by default all other values will be enabled:

```
#log4j.rootLogger=DEBUG, stdout, R
#log4j.rootLogger=INFO, stdout, R
#log4j.rootLogger=WARN, stdout, R
#log4j.rootLogger=ERROR, stdout, R
#log4j.rootLogger=FATAL, stdout, R
#log4j.rootLogger=ALL, stdout, R
#log4j.rootLogger=OFF, stdout, R
```

1. Set the path to log file of standard output:

```
log4j.appender.R.File=PATH_TO_LOG_FILE/stdout.log
```

`PATH_TO_LOG_FILE` is the path to where the log file for standard output is located. For example: `/home/debug/stdout.log`

2. Save and close the file. The new settings will take effect when the web application server is loaded

Modifying the ConnectionManager.ini file

To modify the `ConnectionManager.ini` file:

1. Go to `${IBMRPM_WAR_HOME}/WEB-INF/classes/conf` and open `ConnectionManager.ini` for editing
2. Edit the value for `DSNI` to `DSNI=IBMRPM`
3. Save and close the file

JDBC driver settings

To configure the JDBC driver settings:

1. Copy the `db2jcc.jar`, `db2jcc_license_cisuz.jar`, `db2jcc_license_cu.jar` files from `${DB2TEMPDIR}/JAVA/` to the `${WAS_HOME}/lib` directory, where `${WAS_HOME}` is the path where the web application is installed
For example, `home/IBM/WebSphere/AppServer/lib`
2. After applying these modifications, restart the application server

Verifying the installation

This section describes the process of verifying that the installation is completed and correctly configured.

Validating the database connection

Validate that the connection to the database was successful by opening the `${WAS_HOME}/AppServer/logs/server1/SystemOut.log` file. Look for `ConnectionPool Loaded (###ms)` value. This value validates that the application is connected to the database.

Testing the Web browser connection

To test the Web browser connection:

1. Open a browser window.
2. Go to `http://hostname:portnumber/webapp/IBMRPM/PMOServlet.wss`

You should see the welcome screen for IBM Rational Portfolio Manager.

RPM/PjC installation notes

See Chapter 3, “Installing metrics capabilities for Rational Portfolio Manager,” on page 9.

Deploying RPM Web Services API ear module

The rpm-web-services-7.0.1.1.ear and rpm-web-services-7.0.1.1.war files are located in the `${MIGRATION_PACKAGE}/WebServicesAPI` folder.

For detail information about RPM Web Services API refer to the API guide located in the `${MIGRATION_PACKAGE}/Documents` folder.

Post install activities

For post install steps refer to `Administration_Guide.pdf` document. The post install files are located under `${MIGRATION_HOME}/Post-Install` directory.

Migrating Rational Portfolio Manager on DB2 for Windows

This section tells you how to migrate the Rational Portfolio Manager database from version 6.1.2.7 to version 7.0.1.1 on DB2 for Windows.

Prerequisites for migration

- A successful Rational Portfolio Manager version 6.1.2.7 installation
- Rational Portfolio Manager version 7.0.1.1 migration package
- DB2 v 8.2

Definition of terms used in this chapter

- **Instance Owner:** is the user owning the DB2 Instance which is defined as logical database server environment.
- **Connected User:** is the user who connects to database from web application and has been granted rights to make update, insert, delete, select on database tables. Connected User can be the instance owner too.

You can migrate the database using the schema of your choice:

- Scenario 1: All tables are created using the user name of the instance owner as schema. The instance owner is the user who connects to database from the web application.
- Scenario 2: All tables are created using the user name of the instance owner as schema. The connected user is the user who will be connecting to the database from the web application. The table aliases are created for the connected user. The alias names are created using the user name of the connected user as alias names.

Note: You should choose the scenario that you are using with your current RPM database.

The migration process is carried out through batch process by supplying all the corresponding values for parameters. A message is displayed for each step and a log file is created for each step that you might need to look at in case of unsuccessful migration.

The log files are located in %MIGRATION_HOME%\Database\DB2\Windows\migration and %MIGRATION_HOME%\Database\DB2\Windows\csp folders. There is one main batch process called migration70.bat which carries out all the steps for migration. During migration process you will be asked to hit any key to continue the migration or will be given a choice either to select Yes to import RUP 2003 data or No to cancel it.

Migration steps

1. Copy ibmrpm.dll from %MIGRATION_HOME%\Database\DB2\Windows\csp to both %DB2TEMPDIR%\function and %DB2TEMPDIR%\function\unfenced directories prior to migration.

Note: Make sure you have a backup of your current library files before copying these files.

- If you are using scenario 2, open migration6127.sql from %MIGRATION_HOME%\Database\DB2\Windows\migration folder for editing
 - Find/replace GET_UNIQUE_ID() with CONNECTED_USER.GET_UNIQUE_ID() where CONNECTED_USER is the user name of the connected user who connects to RPM database form the web application
 - Save the files.
2. Stop the web application and the Alert server associated with the RPM database
 3. Increase the size of TS_INDEX tablespace of RPM database before continuing with migration

Note: During the migration your TS_INDEX TBS might run out of space. It is highly recommended to tailor the size of TS_INDEX TBS prior to migration. The following formula can be used to determine the right number for your tablespace definition:

$$\text{Tablespace size} = (\text{average row size} + 8) * \text{no of rows} * 2.50$$

4. Go to %MIGRATION_HOME%\Database\DB2\Windows\migration and run:
migration70

Batch process steps used when migrating from version 6.1.2.7

Here are the steps and the names of log files created for each step of migration process:

1. Checks for the version number in RPM database table to decide from which RPM version the migration has to be done
2. Stops and starts RPM database
3. Drops the triggers of RPM v6.1.2.7 database > drop_triggers61.out
4. If using Scenario 2, it drops aliases > drop_alias61.out
5. It starts the migration process:
 - v6.1.2.7 > migration6127.out
6. Creates aliases if using Scenario 2 > alias70.out
7. Grants rights if using scenario 2 to user accessing RPM database > grants70.out
8. Creates triggers for RPM v 7.0.1.1 > triggers70.out
9. Creates stored procedures for v 7.0.1.1 > createsp.out
%MIGRATION_HOME%\Database\DB2\Windows\csp

10. Binds RPM v 7.0.1.1 code > bindall.out
%MIGRATION_HOME%\Database\DB2\Windows\csp
11. Runs some stored procedures to insert records into RPM database tables > custom_pivot_initdb.out
12. If you choose to import RUP 2003 templates, then it executes all the steps through step 22, otherwise goes directly to step 23:

Note: If you already have RUP 2003 in your database you SHOULD NOT import RUP 2003 in your database again.

drops triggers > drop_triggers70.out

13. Imports RUP data part 1 > db2move1.out
%MIGRATION_HOME%\Database\DB2\Windows\migration\move1
14. Imports RUP data part 2 > db2move2.out
%MIGRATION_HOME%\Database\DB2\Windows\migration\move2
15. If using scenario 2, create aliases for RUP tables > rupalias.out
16. Grants rights if using scenario 2 for RUP tables > rupgrants.out
17. Runs RUP 2003 migration > rupmigration.out
18. If using scenario 2, drops aliases for RUP tables > drop_rupalias.out
19. Drops RUP 2003 temporary tables > dropruptables.out
20. Creates triggers > triggers70.out
21. Runs statistics on tables > Reorgstats70.out
22. Checks for successful migration > Output will be displayed on the screen

Note: If the output contains 7.0.1.1, the migration is successful, if not, then verify all the log files. In any case it is recommended to check all the log files.

Note: During the migration steps you might see the following SQLSTATE numbers in your log files. These can be ignored since they are only warnings:

- SQLSTATE=02000 (...the result set of the query is an empty table)
- SQLSTATE=42704 (...is an undefined name)

Deploying Rational Portfolio Manager Application Server

Note: Before proceeding with middleware deployment, make sure you backup the IBMRPM.ear directory located under %IBMRPM_EAR_HOME%.

Refer to your installation document for deploying IBMRPM.ear located under %MIGRATION_HOME%\WebServer directory.

After deploying you need to edit ConnectionManager.ini and ConnectionPool.ini located under %IBMRPM_EAR_HOME%\IBMRPM.war\WEB-INF\classes\conf directory.

Modifying the ConnectionPool.ini file

Modify settings in the ConnectionPool.ini file as described in the next procedures. Remove the pound character (#) to uncomment any lines in the file needed for your site's configuration. Settings in this file control:

- Datasource configuration
- Connection pool options
- Driver and database options specific to DB2
- Mail alert server settings

- Log file settings

To modify the `ConnectionPool.ini` file:

1. Go to `%IBMRPM_WAR_HOME%\WEB-INF\classes\conf` directory and open `ConnectionPool.ini` for editing.
2. In the **Data Source Configuration** section, set values for the following:
 - `DataSourceName=IBMRPM`
 - `User=RPM_OWNER` or `RPM_CONNECTED_USER`
 - `Password=RPM_OWNER_PASSWORD` or `RPM_CONNECTED_USER_PASSWORD`
 - `ENC=NO`
 - `Dbms=DB2`
3. In the **Pool Options** section, make these changes or you can use default values:
 - `ConnectionPoolSize=pool_size`
 - `ConnectionPoolMax=maximum_pool_size`
 - `ConnectionUseCount=Number of times a connection can be reused`

The connection pool size is for the pool managing the connections between the application server and the database server.
4. In the **Driver and Database** section, make the following changes:
 - a. Set values for `JDBCdriver` and `JDBCconnectionURL`. The `IP_DB_SERVER` should reflect the IP address of database server, the `DB_PORT` should reflect the port number of the RPM database, and `DBNAME` should reflect your instance name or database alias of the TCPIP node for `JDBCconnectionURL`:
 - `JDBCdriver=com.ibm.db2.jcc.DB2Driver`
 - `JDBCconnectionURL=jdbc:db2://IP_DB_SERVER:DB_PORT/DBNAME`
 - b. Check that these lines are not preceded by the comment character `#`. If they are, remove the `#` character. Also check that all lines in the Oracle section for **Driver and Database** are commented.
5. In this step you will configure settings for the **Mail Alert Server**. Note that the user name used to connect to the database is the same one used for the IBM Rational Portfolio Manager web application. The host machine (in this case the web server) must have the mail server installed and configured to send e-mail. Table 1 describes each setting.

Table 4. Mail Alert Server Setting

Setting	Notes
<code>EmailHost=EMAIL_HOST_IP_ADDR</code>	Set to the SMTP IP address or server name.
<code>SendInterval=60000</code>	Set <code>SendInterval</code> to the amount of time in milliseconds you want the IBM Rational Portfolio Manager alert e-mails to be sent.
<code>RollupInterval=86400000</code>	Set <code>RollupInterval</code> to the frequency interval you want the application to rollup time-phased projects.
<code>Sender=E-mail_Author</code>	Set <code>Sender</code> to the author of the e-mails.
<code>Subject=E-mail_Subject</code>	Set <code>Subject</code> to specify the subject line of the e-mails that will be sent.
<code>AlertsOn=true</code>	Specify whether the alert server is on or off.

Table 4. Mail Alert Server Setting (continued)

Setting	Notes
ServerName=Host:Port/RPM_Web_context/	Set the ServerName to the IP address or host name:port number of the Web server/Rational Portfolio Manager Web context/.
ConType=http	Specify HTTP as the connection type.
sendIterationTimes=10	Alert send iteration time in seconds.
WorkflowPollingInterval = 60000	Workflow polling interval in seconds.
WFSchedPollingInterval = 60000	Workflow scheduler polling interval in seconds.

6. Save and close the file. The new settings will take effect when the web application server is loaded.

Modifying the log4j.properties file

If you want IBM Rational Portfolio Manager to use its own log files instead of the standard output, you have to configure application logs. You need to set `log4j.threshold=OFF` to `ON`, then you can set one of the following values by removing the comment mark `#`. If the value `log4j.rootLogger=ALL`, `stdout`, `R`, is uncommented, then by default all other values will be enabled:

```
#log4j.rootLogger=DEBUG, stdout, R
#log4j.rootLogger=INFO, stdout, R
#log4j.rootLogger=WARN, stdout, R
#log4j.rootLogger=ERROR, stdout, R
#log4j.rootLogger=FATAL, stdout, R
#log4j.rootLogger=ALL, stdout, R
#log4j.rootLogger=OFF, stdout, R
```

1. Set the path to log file of standard output:
`log4j.appender.R.File=PATH_TO_LOG_FILE\\stdout.log`
`PATH_TO_LOG_FILE` is the path to where the log file for standard output is located. For example: `C:\\debug\\stdout.log`
2. Save and close the file. The new settings will take effect when the web application server is loaded.

Modifying the ConnectionManager.ini file

To modify the `ConnectionManager.ini` file:

1. Go to `%IBMRPM_WAR_HOME%\WEB-INF\classes\conf` and open `ConnectionManager.ini` for editing.
2. Edit the value for `DSNI` to `DSNI=IBMRPM`.
3. Save and close the file.

JDBC driver settings

To configure the JDBC driver settings:

1. Copy the `db2jcc.jar`, `db2jcc_license_cisuz.jar`, `db2jcc_license_cu.jar` files from `%DB2TEMPDIR%\JAVA\` to the `%WAS_HOME%\lib` directory, where `%WAS_HOME%` is the path where the web application is installed
For example, `C:\Program files\IBM\WebSphere\AppServer\lib`
2. After applying these modifications, restart the application server

Verifying the installation

This section describes the process of verifying that the installation is completed and correctly configured.

Validating the database connection

Validate that the connection to the database was successful by opening the %WAS_HOME%\AppServer\logs\server1\SystemOut.log file. Look for ConnectionPool Loaded (####ms) value. This value validates that the application is connected to the database.

Testing the Web browser connection

To test the Web browser connection:

1. Open a browser window.
2. Go to `http://hostname:portnumber/webapp/IBMRPM/PMOServlet.wss`

You should see the welcome screen for IBM Rational Portfolio Manager.

RPM/PjC installation notes

See Chapter 3, “Installing metrics capabilities for Rational Portfolio Manager,” on page 9.

Deploying RPM Web Services API ear module

The rpm-web-services-7.0.1.1.ear and rpm-web-services-7.0.1.1.war files are located in the %MIGRATION_PACKAGE%\WebServicesAPI folder.

For detail information about RPM Web Services API refer to the API guide located in the %MIGRATION_PACKAGE%\Documents folder.

Post install activities

For post install steps refer to Administration_Guide.pdf document. The post install files are located under %MIGRATION_HOME%\Post-Install directory.

Migrating Rational Portfolio Manager on Oracle for Windows

This chapter tells you how to migrate the Rational Portfolio Manager database from version 6.1.2.7 to version 7.0.1.1 on Oracle for Windows.

It is also possible to run the migration scripts from a remote machine. In this case, you need to make sure you can connect to the remote database using SQLplus.

Note: Rational Portfolio Manager 7.0.1.1 migration script uses SQLplus.exe located under %ORACLE_HOME%\bin directory and in case of migrating RUP templates, jar.exe located under %ORACLE_HOME%\jdk\bin directory and imp.exe located under %ORACLE_HOME%\bin directory. Therefore you should run the migration scripts on a machine that has these utilities.

Prerequisites for migration

- A successful Rational Portfolio Manager version 6.1.2.7 installation
- Rational Portfolio Manager version 7.0.1.1 migration package
- SQLplus.exe, jar.exe, and imp.exe utilities for running Oracle migration scripts

Migration steps

Rational Portfolio Manager migration to version 7.0.1.1 has 3 steps:

1. Migrating RPM schema owner
2. Migrating RPM connected user (if a connected user is used)
3. Integrating RUP 2003 (optional)

Steps to migrate RPM schema owner

1. Stop the application server associated with the RPM database
2. Shutdown the RPM database
3. Startup the RPM database
4. Tablespaces used in the migration scripts are:
 - PMO_DATA_64K for tables
 - PMO_LOB_64K for lobs
 - PMO_IDX_64K for indexes

Note: If the tablespaces in your RPM database are different from the above mentioned names, you need to change the name of the tablespaces in the migration scripts in the following files:

```
%MIGRATION_HOME%\Database\Oracle\scripts\6.1_to_6.2\step3.sql
```

```
%MIGRATION_HOME%\Database\Oracle\scripts\6.2_to_7.0.1.1\step1-6200.sql
```

```
%MIGRATION_HOME%\Database\Oracle\scripts\6.2_to_7.0.1.1\plbdd1\index.dd1
```

5. Open a command prompt window and change the directory to %MIGRATION_HOME%\Database\Oracle and run mig_owner.bat
Migration script will run and ask you a series of questions:
6. Have you performed pre_migration steps? Before migration you need to backup your database, if you have a backup, answer yes to continue. If you answer no, no migration will be performed
7. The script uses the %ORACLE_HOME% environment variable of the machine which you are running the script from. Enter the required information when prompted
8. Is your RPM database installed on this machine? If you answer no, you will be prompted to enter:
 - TNS string
 - IBMRPM schema owner
 - IBMRPM schema owner passwordIf you answer yes, you will be prompted to enter:
 - ORACLE_SID value
 - IBMRPM schema owner
 - IBMRPM schema owner password
9. Are you sure you want to migrate your database now? Answer yes to start the migration
10. At the end of migration you will be provided with migration report. Migration report includes the following information:
 - The current version of the database (which at this level must be 7.0.1.1)
 - The number of invalid objects in the database (which we expect to be 0)
 - The number of objects (needed for 7.0.1.1) for each object type and their status in the migrated RPM database

Note: Comparing the number of objects for each object type in the **YOUR_RPM_DATABASE** and **NUMBER_OF_OBJECTS_MUST_BE** columns helps you to check if the migration has been successful. Obviously we expect these values to be equal.

11. Migration log files will be created under %MIGRATION_HOME%\Database\Oracle\logs folder. It is always recommended to look at the log files to see if migration was successful
12. Stop Oracle listener
%ORACLE_HOME%\bin\lsnrctl stop
13. LevelingLib.dll located under %MIGRATION_HOME%\Database\Oracle\win\9i folder (10g folder if your Oracle version is 10g) must be manually copied to the right location on the database server

Note: If the name of the leveling library that you already have on your server is not LevelingLib.dll you need to drop the library and create it again with the correct name, then compile invalid objects in the database.

Example:

```
DROP LIBRARY LEVELING_LIB;  
CREATE LIBRARY LEVELING_LIB AS 'C:\oracle\ora92\bin\LevelingLib.dll';  
/
```

14. Start Oracle listener
%ORACLE_HOME%\bin\lsnrctl start

Steps to migrate RPM connected user

1. Open a command prompt window and change the directory to %MIGRATION_HOME%\Database\Oracle and run mig_con_user.bat
Migration script will run and ask you a series of questions.
2. The script uses your %ORACLE_HOME% environment variable of the machine which you are running the script from. Enter the required information when prompted
3. Is your RPM database installed on this machine? If you answer no, you will be prompted to enter:
 - TNS string
 - IBMRPM schema owner
 - IBMRPM schema owner passwordIf you answer yes, you will be prompted to enter:
 - Verify the ORACLE_SID value
 - Enter IBMRPM schema owner
 - Enter IBMRPM schema owner password
4. Enter RPM connected user name when prompted
5. Enter RPM connected user password when prompted
6. Enter the password for sys user when prompted
7. Are you sure you want to migrate your connected user now? Answer yes to start the migration
8. Migration log files will be created under %MIGRATION_HOME%\Database\Oracle\logs folder. It is always recommended to look at the log files to see if migration was successful

Steps to integrate RUP 2003

You can optionally import RUP 2003 templates for your RPM database.

Note: If you already have RUP 2003 in your database you SHOULD NOT import RUP 2003 in your database again.

Here are the steps to import:

1. Verify that you have a tablespace called PMO_DATA_64K in your database
2. Verify that jar.exe, sqlplus.exe, and imp.exe exist on your machine. The jar.exe should be located under %ORACLE_HOME%\jdk\bin and sqlplus.exe and imp.exe should be located under %ORACLE_HOME%\bin directories.
3. Open a command prompt window and change directory to %MIGRATION_HOME%\Database\Oracle and run:
rup2003.bat
4. When you are prompted, enter the required information like the RPM schema owner username, password, and ORACLE_SID

Deploying Rational Portfolio Manager Application Server

Note: Before proceeding with middleware deployment, make sure you backup the IBMRPM.ear directory located under %IBMRPM_EAR_HOME%.

Refer to your installation document for deploying IBMRPM.ear located under %MIGRATION_HOME%\WebServer directory.

After deploying you need to edit ConnectionManager.ini and ConnectionPool.ini located under %IBMRPM_EAR_HOME%\IBMRPM.war\WEB-INF\classes\conf directory.

Modifying the ConnectionPool.ini file

Modify settings in the ConnectionPool.ini file as described in the next procedures. Remove the pound character (#) to uncomment any lines in the file needed for your site's configuration. Settings in this file control:

- Datasource configuration
- Connection pool options
- Driver and database options specific to DB2
- Mail alert server settings
- Log file settings

To modify the ConnectionPool.ini file:

1. Go to %IBMRPM_WAR_HOME%\WEB-INF\classes\conf directory and open ConnectionPool.ini for editing.
2. In the **Data Source Configuration** section, set values for the following:
DataSourceName=IBMRPM
User=RPM_OWNER or RPM_CONNECTED_USER
Password=RPM_OWNER_PASSWORD or RPM_CONNECTED_USER_PASSWORD
ENC=NO
Dbms=DB2
3. In the **Pool Options** section, make these changes or you can use default values:
ConnectionPoolSize=pool_size

ConnectionPoolMax=maximum_pool_size

ConnectionUseCount=Number of times a connection can be reused

The connection pool size is for the pool managing the connections between the application server and the database server.

4. In the **Driver and Database** section, make the following changes:
 - a. Set values for JDBCDriver and JDBCConnectionURL. The IP_DB_SERVER should reflect the IP address of database server, the DB_PORT should reflect the port number of the RPM database, and DBNAME should reflect your instance name or database alias of the TCPIP node for JDBCConnectionURL:
JDBCdriver=com.ibm.db2.jcc.DB2Driver
JDBCConnectionURL=jdbc:db2://IP_DB_SERVER:DB_PORT/DBNAME
 - b. Check that these lines are not preceded by the comment character #. If they are, remove the # character. Also check that all lines in the Oracle section for **Driver and Database** are commented.
5. In this step you will configure settings for the **Mail Alert Server**. Note that the user name used to connect to the database is the same one used for the IBM Rational Portfolio Manager web application. The host machine (in this case the web server) must have the mail server installed and configured to send e-mail. Table 1 describes each setting.

Table 5. Mail Alert Server Setting

Setting	Notes
EmailHost=EMAIL_HOST_IP_ADDR	Set to the SMTP IP address or server name.
SendInterval=60000	Set SendInterval to the amount of time in milliseconds you want the IBM Rational Portfolio Manager alert e-mails to be sent.
RollupInterval=86400000	Set RollupInterval to the frequency interval you want the application to rollup time-phased projects.
Sender=E-mail_Author	Set Sender to the author of the e-mails.
Subject=E-mail_Subject	Set Subject to specify the subject line of the e-mails that will be sent.
AlertsOn=true	Specify whether the alert server is on or off.
ServerName=Host:Port/RPM_Web_context/	Set the ServerName to the IP address or host name:port number of the Web server/Rational Portfolio Manager Web context/.
ConType=http	Specify HTTP as the connection type.
sendIterationTimes=10	Alert send iteration time in seconds.
WorkflowPollingInterval = 60000	Workflow polling interval in seconds.
WFSchedPollingInterval = 60000	Workflow scheduler polling interval in seconds.

6. Save and close the file. The new settings will take effect when the web application server is loaded.

Modifying the log4j.properties file

If you want IBM Rational Portfolio Manager to use its own log files instead of the standard output, you have to configure application logs. You need to set log4j.threshold=OFF to ON, then you can set one of the following values by

removing the comment mark #. If the value `log4j.rootLogger=ALL, stdout, R`, is uncommented, then by default all other values will be enabled:

```
#log4j.rootLogger=DEBUG, stdout, R
#log4j.rootLogger=INFO, stdout, R
#log4j.rootLogger=WARN, stdout, R
#log4j.rootLogger=ERROR, stdout, R
#log4j.rootLogger=FATAL, stdout, R
#log4j.rootLogger=ALL, stdout, R
#log4j.rootLogger=OFF, stdout, R
```

1. Set the path to log file of standard output:

```
log4j.appender.R.File=PATH_TO_LOG_FILE\\stdout.log
```

`PATH_TO_LOG_FILE` is the path to where the log file for standard output is located. For example: `C:\\debug\\stdout.log`

2. Save and close the file. The new settings will take effect when the web application server is loaded.

Modifying the ConnectionManager.ini file

To modify the `ConnectionManager.ini` file:

1. Go to `%IBMRPM_WAR_HOME%\WEB-INF\classes\conf` and open `ConnectionManager.ini` for editing.
2. Edit the value for `DSNI` to `DSNI=IBMRPM`.
3. Save and close the file.

JDBC driver settings

To configure the JDBC driver settings:

1. Copy the `db2jcc.jar`, `db2jcc_license_cisuz.jar`, `db2jcc_license_cu.jar` files from `%DB2TEMPDIR%\JAVA\` to the `%WAS_HOME%\lib` directory, where `%WAS_HOME%` is the path where the web application is installed

For example, `C:\Program files\IBM\WebSphere\AppServer\lib`

2. After applying these modifications, restart the application server

Verifying the installation

This section describes the process of verifying that the installation is completed and correctly configured.

Validating the database connection

Validate that the connection to the database was successful by opening the `%WAS_HOME%\AppServer\logs\server1\SystemOut.log` file. Look for `ConnectionPool Loaded (###ms)` value. This value validates that the application is connected to the database.

Testing the Web browser connection

To test the Web browser connection:

1. Open a browser window.
2. Go to `http://hostname:portnumber/webapp/IBMRPM/PMOServlet.wss`

You should see the welcome screen for IBM Rational Portfolio Manager.

RPM/PjC installation notes

See Chapter 3, “Installing metrics capabilities for Rational Portfolio Manager,” on page 9.

Deploying RPM Web Services API ear module

The rpm-web-services-7.0.1.1.ear and rpm-web-services-7.0.1.1.warfiles are located in the %MIGRATION_PACKAGE%\WebServicesAPI folder.

For detail information about RPM Web Services API refer to the API guide located in the %MIGRATION_PACKAGE%\Documents folder.

Post install activities

For post install steps refer to Administration_Guide.pdf document. The post install files are located under %MIGRATION_HOME%\Post-Install directory.

Chapter 5. Contacting IBM Customer Support for Rational software products

If you have questions about installing, using, or maintaining this product, contact IBM Customer Support as follows:

The IBM Software Support Internet site provides you with self-help resources and electronic problem submission. The IBM Software Support home page for Rational products can be found at <http://www.ibm.com/software/rational/support/>.

Voice Support is available to all current contract holders by dialing a telephone number in your country (where available). For specific country phone number, go to <http://www.ibm.com/planetwide/>.

Note: When you contact IBM Customer Support, please be prepared to supply the following information:

- Your name, company name, ICN number, telephone number, and e-mail address
- Your operating system, version number, and any service packs or patches you have applied
- Your database, version number, and any service packs or patches you have applied
- Your application server, version number, and any service packs or patches you have applied
- Product name and release number
- Your PMR number (if you are following up on a previously reported problem)

Appendix. Notices

This information was developed for products and services offered in the U.S.A. IBM may not offer the products, services, or features discussed in this document in other countries. Consult your local IBM representative for information on the products and services currently available in your area. Any reference to an IBM product, program, or service is not intended to state or imply that only that IBM product, program, or service may be used. Any functionally equivalent product, program, or service that does not infringe any IBM intellectual property right may be used instead. However, it is the user's responsibility to evaluate and verify the operation of any non-IBM product, program, or service.

IBM may have patents or pending patent applications covering subject matter described in this document. The furnishing of this document does not grant you any license to these patents. You can send license inquiries, in writing, to:

IBM Director of Licensing
IBM Corporation North Castle Drive
Armonk, NY 10504-1785
U.S.A.

For license inquiries regarding double-byte (DBCS) information, contact the IBM Intellectual Property Department in your country or send inquiries, in writing, to:

IBM World Trade Asia Corporation Licensing
2-31 Roppongi 3-chome, Minato-ku
Tokyo 106, Japan

The following paragraph does not apply to the United Kingdom or any other country where such provisions are inconsistent with local law:

INTERNATIONAL BUSINESS MACHINES CORPORATION PROVIDES THIS PUBLICATION "AS IS" WITHOUT WARRANTY OF ANY KIND, EITHER EXPRESS OR IMPLIED, INCLUDING, BUT NOT LIMITED TO, THE IMPLIED WARRANTIES OF NON-INFRINGEMENT, MERCHANTABILITY OR FITNESS FOR A PARTICULAR PURPOSE. Some states do not allow disclaimer of express or implied warranties in certain transactions, therefore, this statement may not apply to you.

This information could include technical inaccuracies or typographical errors. Changes are periodically made to the information herein; these changes will be incorporated in new editions of the publication. IBM may make improvements and/or changes in the product(s) and/or the program(s) described in this publication at any time without notice.

Any references in this information to non-IBM Web sites are provided for convenience only and do not in any manner serve as an endorsement of those Web sites. The materials at those Web sites are not part of the materials for this IBM product and use of those Web sites is at your own risk.

IBM may use or distribute any of the information you supply in any way it believes appropriate without incurring any obligation to you.

Licensees of this program who wish to have information about it for the purpose of enabling: (i) the exchange of information between independently created

programs and other programs (including this one) and (ii) the mutual use of the information which has been exchanged, should contact:

IBM Corporation
Department BCFB
20 Maguire Road
Lexington, MA 02421
U.S.A.

Such information may be available, subject to appropriate terms and conditions, including in some cases, payment of a fee.

The licensed program described in this document and all licensed material available for it are provided by IBM under terms of the IBM Customer Agreement, IBM International Program License Agreement or any equivalent agreement between us.

Any performance data contained herein was determined in a controlled environment. Therefore, the results obtained in other operating environments may vary significantly. Some measurements may have been made on development-level systems and there is no guarantee that these measurements will be the same on generally available systems. Furthermore, some measurement may have been estimated through extrapolation. Actual results may vary. Users of this document should verify the applicable data for their specific environment.

Information concerning non-IBM products was obtained from the suppliers of those products, their published announcements or other publicly available sources. IBM has not tested those products and cannot confirm the accuracy of performance, compatibility or any other claims related to non-IBM products. Questions on the capabilities of non-IBM products should be addressed to the suppliers of those products.

COPYRIGHT LICENSE:

This information contains sample application programs in source language, which illustrates programming techniques on various operating platforms. You may copy, modify, and distribute these sample programs in any form without payment to IBM, for the purposes of developing, using, marketing or distributing application programs conforming to the application programming interface for the operating platform for which the sample programs are written. These examples have not been thoroughly tested under all conditions. IBM, therefore, cannot guarantee or imply reliability, serviceability, or function of these programs. You may copy, modify, and distribute these sample programs in any form without payment to IBM for the purposes of developing, using, marketing, or distributing application programs conforming to IBM's application programming interfaces.

Each copy or any portion of these sample programs or any derivative work, must include a copyright notice as follows:

(c) (your company name) (year). Portions of this code are derived from IBM Corp. Sample Programs. (c) Copyright IBM Corp. enter the year or years. All rights reserved.

Additional legal notices are described in the legal_information.html file that is included in your Rational software installation.

Trademarks

AIX, ClearCase, ClearCase Attache, ClearCase MultiSite, ClearDDTS, ClearGuide, ClearQuest, DB2, DB2 Universal Database, DDTS, Domino, IBM, Lotus Notes, MVS, Notes, OS/390, Passport Advantage, ProjectConsole Purify, Rational, Rational Rose, Rational Suite, Rational Unified Process, RequisitePro, RUP, S/390, SoDA, SP1, SP2, Team Unifying Platform, WebSphere, XDE, and z/OS are trademarks of International Business Machines Corporation in the United States, other countries, or both.

Java and all Java-based trademarks and logos are trademarks of Sun Microsystems, Inc. in the United States, other countries, or both.

Microsoft, Windows, Windows NT, and the Windows logo are trademarks of Microsoft Corporation in the United States, other countries, or both.

UNIX is a registered trademark of The Open Group in the United States and other countries.

Linux is a trademark of Linus Torvalds in the United States, other countries, or both.

Other company, product or service names may be trademarks or service marks of others.



Printed in USA