

# Installing Rational TeamTest and Rational Robot

Version 2000.02.10

## Installing Rational TeamTest and Rational Robot

Copyright © 1999-2000 Rational Software Corporation. All rights reserved. The contents of this manual and the associated software are the property of Rational Software Corporation and are copyrighted. Any reproduction in whole or in part is strictly prohibited. For additional copies of this manual or software, please contact Rational Software Corporation.

Rational, the Rational logo, PerformanceStudio, SiteCheck, TestFactory, TestStudio, Object-Oriented Recording, and Object Testing are trademarks or registered trademarks of Rational Software Corporation in the United States and in other countries. Java and all Java-based marks are trademarks or registered trademarks of Sun Microsystems, Inc. in the United States and other countries. All other names are used for identification purposes only and are trademarks or registered trademarks of their respective companies.

U.S. GOVERNMENT RIGHTS. Use, duplication, or disclosure by the U.S. Government is subject to restrictions set forth in the applicable Rational License Agreement and in DFARS 227.7202-1(a) and 227.7202-3(a) (1995), DFARS 252.227-7013(c)(1)(ii) (Oct 1988), FAR 12.212(a) 1995, FAR 52.227-19, or FAR 52.227-14, as applicable.

Revised 4/2000

This manual prepared by:  
Rational Software Corporation  
20 Maguire Road  
Lexington, MA 02421  
U.S.A.

Phone:  
800-433-5444  
408-863-4000

E-mail: [support@rational.com](mailto:support@rational.com)  
Web: <http://www.rational.com>

P/N 800-023377-000

# ▶ ▶ ▶ Contents

## Preface

|  |     |
|--|-----|
| Resources . . . . .                                  | v   |
| Using Help . . . . .                                 | vi  |
| Contacting Rational Technical Publications . . . . . | vi  |
| Contacting Rational Technical Support . . . . .      | vii |

## 1 Installing Rational TeamTest and Rational Robot

|  |    |
|--|----|
| Before You Begin . . . . .                                   | 2  |
| Hardware and Software Requirements . . . . .                 | 2  |
| About Rational Test Databases . . . . .                      | 4  |
| About Rational ClearQuest Databases . . . . .                | 5  |
| Determining a Database Type . . . . .                        | 6  |
| Installing Rational TeamTest and Rational Robot . . . . .    | 8  |
| About Rational TeamTest and Rational Robot . . . . .         | 8  |
| How to Install Rational TeamTest or Rational Robot . . . . . | 9  |
| Removing Your Software . . . . .                             | 11 |
| After Installation . . . . .                                 | 11 |
| Upgrading from SQA Suite 6.x . . . . .                       | 11 |
| Installing SQL Anywhere Server Database . . . . .            | 20 |
| Installing the Rational Test Enablers . . . . .              | 22 |
| Installing the Sample Applications . . . . .                 | 24 |
| Installing Web Server Components . . . . .                   | 25 |
| Installing Crystal Reports . . . . .                         | 27 |
| Troubleshooting Your Installation . . . . .                  | 27 |

## Index

# Contents

## ▶ ▶ ▶ Preface

With Rational Robot, you can plan, develop, and execute functional tests for your Windows NT 4.0, Windows 2000, Windows 98, and Windows 95 applications. With Rational TeamTest, you get all of Robot's capabilities, plus you can enter defects using a special version of Rational ClearQuest that includes specially designed defect-tracking forms.

This manual describes how to install Rational TeamTest and Rational Robot. It is intended for system administrators, application developers, quality assurance managers, and quality assurance testers.

### Other Resources

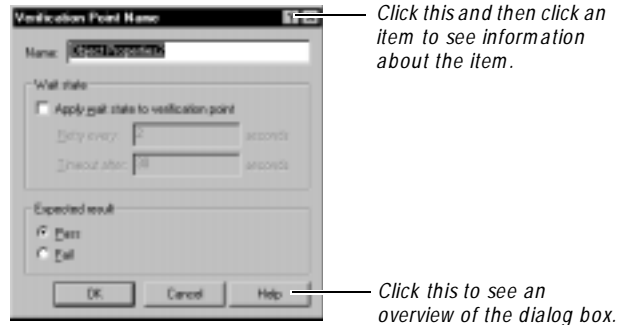
- ▶ This product contains complete online Help. From the main toolbar, choose an option from the **Help** menu.  
For information about context-sensitive Help, see the following section.
- ▶ All manuals for this product are available online in PDF format. These manuals are on the *Rational Solutions for Windows* Online Documentation CD.
- ▶ For information about training opportunities, see the Rational University Web site: <http://www.rational.com/university>.

## Using Help

This product contains context-sensitive Help for dialog boxes, menus, and toolbars.

### Dialog Box Help

Most dialog box Help includes overviews and detailed item information.



### Menu Command Help



For menu command Help, highlight the command and press F1, or click the Help button on the toolbar and select the command. A brief description of the command also appears in the status bar.

### Toolbar Button Help



For toolbar button Help, pause the pointer over the button. A yellow ToolTip appears below the button, and a brief description appears in the status bar. For more detailed information, click the Help button on the toolbar, and then select the button for which you want more information.

## Contacting Rational Technical Publications

To send feedback about documentation for Rational products, please send e-mail to our technical publications department at [techpubs@rational.com](mailto:techpubs@rational.com).

## Contacting Rational Technical Support

If you have questions about installing, using, or maintaining this product, contact Rational Technical Support as follows:

### Rational Technical Support

| Location       | Contact Information   | Notes   |
|----------------|---|---|
| North America  | Telephone:<br>800-433-5444<br>408-863-4000<br>E-mail:<br>support@rational.com | Please be prepared to supply the following information: <ul style="list-style-type: none"><li>– Your name, telephone number, and company name</li><li>– Computer make and model</li></ul> |
| Europe         | Telephone:<br>+31 (0) 20 4546 200<br>E-mail:<br>support@europe.rational.com   | <ul style="list-style-type: none"><li>– Operating system and version number</li><li>– Product release number and serial number</li></ul>  |
| Asia Pacific   | Telephone:<br>+61-2-9419-0111<br>E-mail:<br>support@apac.rational.com         | <ul style="list-style-type: none"><li>– Your Case ID number (if you are calling about a previously reported problem)</li></ul>  |
| World Wide Web | <a href="http://www.rational.com">http://www.rational.com</a>                 | Click the Technical Support link.   |





## ▶▶▶ CHAPTER 1

# Installing Rational TeamTest and Rational Robot

This chapter explains how to install Rational TeamTest and Rational Robot. It includes the following topics:

- ▶ Before you begin
- ▶ Installing Rational TeamTest and Rational Robot
- ▶ After installation
- ▶ Troubleshooting

The following table lists the items that you can install and where to find information about each one:

| <b>To install</b>                   | <b>See</b>  |
|-------------------------------------|---|
| Rational Robot                      | <i>Installing Rational TeamTest and Rational Robot</i> on page 8                  |
| Rational TeamTest                   | <i>Installing Rational TeamTest and Rational Robot</i> on page 8                  |
| Sybase SQL Anywhere Database Server | <i>How to Install the Sybase SQL Anywhere Database Server Software</i> on page 21 |
| Rational Test Enablers              | <i>Installing the Rational Test Enablers</i> on page 22                           |

*(Continued)*

| <b>To install</b>                           | <b>See</b>  |
|---|---|
| Sample applications and applets             | <i>Installing the Sample Applications</i> on page 24  |
| Rational ClearQuest Web and TestManager/Web | <i>Installing Web Server Components</i> on page 25  |
| Crystal Reports                             | <i>Installing Crystal Reports</i> on page 27  |
| Globetrotter FLEXIm License Server          | For a description of this software, see <i>About Rational TeamTest and Rational Robot</i> on page 8. For information about installing this software, see the <i>Administering Licenses for Rational Software</i> manual or the Rational License Administrator Help. |

## Before You Begin

---

This section provides information that you need before you install Rational TeamTest or Rational Robot.

**NOTE:** If you have SQA Suite 6.x installed on your computer, you can install Rational TeamTest or Rational Robot without deleting SQA Suite 6.x. Both versions can coexist on the same system because they are installed in different directories.

## Hardware and Software Requirements

Make sure that your computer conforms to the following minimum requirements for each product or component you plan to install

| <b>Rational component</b> | <b>Minimum requirements</b>  |
|---------------------------|--|
| Rational TeamTest         | 13 MHz or higher Pentium-compatible computer<br>228 MB free disk space (minimum installation)<br>239 MB free disk space (includes all sample applications)<br>64 MB RAM is the recommended minimum;<br>more memory generally improves responsiveness.<br>2 GB hard disk with a minimum of 540 MB free space<br>Microsoft Windows NT 4.0 (service pack 4),<br>Windows 2000, Windows 98, or Windows 95 |

*(Continued)*

| Rational component                       | Minimum requirements  |
|--|---|
| Rational Robot                           | 13 MHz or higher Pentium-compatible computer<br>106 MB free disk space (minimum installation)<br>115 MB free disk space (includes all sample applications)<br>64 MB RAM is the recommended minimum;<br>more memory generally improves responsiveness.<br>2GB hard disk with a minimum of 540 MB free space<br>Microsoft Windows NT 4.0 (service pack 4),<br>Windows 2000, Windows 98, or Windows 95 |
| Rational ClearQuest Web                  | ClearQuest Web is included with Rational TeamTest.<br>Microsoft Internet Information Server (IIS) with Active Server Pages required.  |
| Crystal Reports 6.0 Professional Edition | 80 MB free disk space (minimum installation)  |
| SQL Anywhere Server                      | Your network server must be an Intel-based PC.<br>Windows NT 4.0 Server, Windows NT 4.0 Workstation<br>Pentium processor<br>64 MB memory<br>100 MB disk space<br>TCP/IP protocol<br><b>Note:</b> Novell NetWare software is no longer supported for network servers.  |

Before you install Rational TeamTest or Rational Robot, be sure to do the following:

- ▶ If you have a previous version of Rational TeamTest or Rational Robot on your computer, completely uninstall it before installing this version of Rational TeamTest or Rational Robot.

**NOTE:** If you have SQA Suite 6.x installed on your computer, you can install Rational TeamTest or Rational Robot without deleting SQA Suite 6.x. Both versions can coexist on the same system because they are installed in different directories.

- ▶ Quit all applications.
- ▶ Make sure that the Windows computers meet the minimum requirements listed in *Hardware and Software Requirements* on page 2.
- ▶ Make sure that all computers have TCP/IP installed. If you have updates to your network software that you have not installed, be sure to install the upgrades.
- ▶ Verify that the Windows computers are communicating with each other. (If you have any problems, see your network administrator.)
- ▶ Decide which type of database you need for your Rational repository or ClearQuest database. For information, see the next section, *About Rational Test Databases* or *Choosing a ClearQuest Database Type* on page 5.

### About Rational Test Databases

A Rational Test database stores functional and performance testing information such as verification point data, queries, reports and report layouts, scripts, and information about users, computers, and groups. When you create a new repository, you can create two types of databases: Microsoft Access databases or Sybase SQL Anywhere Database Server databases. For a summary of which type of database software to install, see *Determining a Database Type* on page 6. For information about each type of database, see the following descriptions.

**NOTE:** The following type of database is installed by default when you install your Rational software.

**Microsoft Access** – Microsoft Access is the default database type for Rational Test databases and is installed automatically when you install your Rational software. We recommend using Microsoft Access for a database with seven or fewer concurrent users. This type of database is virtually maintenance-free. For example, you can back up the database simply by backing up the Rational repository directory. However, with more than seven users, data access is slower than for a comparably sized Sybase SQL Anywhere Database Server database. If you are accessing the database over a wide-area network, we recommend using Sybase SQL Anywhere for your database.

**Sybase SQL Anywhere Database Server** – We recommend using this type of database for a database with eight or more concurrent users. Data access for a SQL Anywhere Database Server database is faster than for a comparably sized Microsoft Access database. However, SQL Anywhere database server software requires more maintenance than a Microsoft Access database. Sybase SQL Anywhere Database Server comes with your Rational software, but does not install automatically. For information about installing this software, see *How to Install the Sybase SQL Anywhere Database Server Software* on page 21.

## About Rational ClearQuest Databases

TeamTest comes with a special version of Rational ClearQuest. This version of ClearQuest includes specially designed defect forms and reports to help you manage your functional testing efforts. Use the information in this section if you plan to use Rational ClearQuest.

**NOTE:** The version of ClearQuest that comes with TeamTest differs from standard ClearQuest in the following way: you cannot add a field to a ClearQuest schema. To add fields to a schema, you must purchase standard Rational ClearQuest software or Rational TestStudio which comes with standard Rational ClearQuest.

Before you create or attach a ClearQuest database to a repository, you need to:

- ▶ Configure ClearQuest by creating a new schema repository or by connecting to an existing schema repository. A ClearQuest **schema repository** stores all schemas and all data associated with existing schemas in a special repository. The schema repository does not store any user data. For more information about configuring a schema repository, see the *Using Rational Administrator* manual.
- ▶ Decide what type of ClearQuest user database to use. A ClearQuest **user database** contains all user data and a copy of the schema associated with the database. User data in a ClearQuest database includes change-request records such as defects, as well as reports, records, tables, and all other data entered by users.

### Choosing a ClearQuest Database Type

To use ClearQuest, you need to create a user database to store defects for your functional testing efforts. This database is different from the Rational Test database.

When you create a ClearQuest user database, it can be either a Microsoft Access, Sybase SQL Anywhere Database Server, Microsoft SQL Server, or Oracle database. For a summary of which type of which database software to install, see *Determining a Database Type* on page 6. For information about each type of database, see the following descriptions.

**NOTE:** If you use a SQL Server or an Oracle database with ClearQuest, you must install and configure the database specifically for ClearQuest or you will not be able to create a repository. For information about installing Microsoft SQL Server for ClearQuest, see the *Installing Rational ClearQuest* manual. For information about configuring Microsoft SQL Server for ClearQuest, see the *Administering Rational ClearQuest* manual. Both of these manuals are on the Rational online documentation CD.

Rational ClearQuest Web lets you enter change-request records remotely using a Web-based interface.

**NOTE:** Rational ClearQuest Web does not support Microsoft Access databases.

**Microsoft Access** – Microsoft Access is the default database type for ClearQuest databases and installs automatically when you install Rational software. We recommend using Microsoft Access for a database with seven or fewer concurrent users. This type of database is virtually maintenance-free. For example, you can back up the database simply by backing up the Rational repository directory. However, with more than seven users, data access is slower than for a comparably sized Sybase SQL Anywhere Database Server database.

**Sybase SQL Anywhere Database Server** – We recommend using this type of database for a database with eight or more concurrent users. Data access for a SQL Anywhere Database Server database is faster than for a comparably sized Microsoft Access database. Sybase SQL Anywhere Database Server comes with your Rational software but is not installed automatically. For information about installing this software, see your Rational installation manual.

**Microsoft SQL Server** – This software does not come with your Rational software. You can use this software for ClearQuest databases; however, you must purchase the software and install it separately.

**Oracle** – This software does not come with your Rational software. You can use this software for ClearQuest databases; however, you must purchase the software and install it separately.

## Determining a Database Type

The following table summarizes which type of database software to use for a Rational Test database.

| <b>If your Rational Test database</b>  | <b>Then</b>   |
|--|---|
| Has seven or fewer concurrent users and is not accessed over a wide-area network | Use a Microsoft Access database. This is the default database and installs automatically when you install your Rational software.   |
| Has eight or more concurrent users or is accessed over a wide-area network       | Install the Sybase SQL Anywhere Database Server software that comes with your Rational software. For more information about installing Sybase SQL Anywhere Database Server software, see <i>How to Install the Sybase SQL Anywhere Database Server Software</i> on page 21. |

The following table summarizes which type of database software to use for a ClearQuest database.

| If your ClearQuest database   | Then  |
|---|---|
| Has seven or fewer concurrent users and is not accessed over a wide-area network              | Use a Microsoft Access database. This is the default database and installs automatically when you install Rational software.  |
| Has eight or more concurrent users or is accessed over a wide-area network                    | <p>Use the Sybase SQL Anywhere Database Server software that comes with your Rational software. For more information about installing Sybase SQL Anywhere Database Server software, see <i>How to Install the Sybase SQL Anywhere Database Server Software</i> on page 21.</p> <p><b>Note:</b> We recommend using a Window NT Server for your database server because a Windows NT Workstation allows only ten network connections.</p> |
| Has eight or more concurrent users and you want to use Microsoft SQL Server for your database | Purchase Microsoft SQL Server software and see the ClearQuest installation and administration manuals to install and correctly configure your database for ClearQuest.  |
| Has eight or more concurrent users and you want to use Oracle software                        | Purchase Oracle software and see the ClearQuest installation manual to install and correctly configure your database.   |

## Installing Rational TeamTest and Rational Robot

---

This section describes how to install Rational TeamTest and Rational Robot. For information about the components that are installed with each product, see the following section. For installation instructions, skip to *How to Install Rational TeamTest or Rational Robot* on page 9.

### About Rational TeamTest and Rational Robot

When you install Rational TeamTest or Rational Robot, you can install some or all of the components available on your installation CD. The following list describes Rational TeamTest and Rational Robot:

**Rational TeamTest** – Installs Rational Robot. (For a list of Robot components, see the following list.) Also installs a version of Rational ClearQuest that includes specially designed defect-tracking forms.

**NOTE:** The version of ClearQuest that comes with TeamTest differs from standard ClearQuest in the following way: you cannot add a field to a ClearQuest schema. To add fields to a schema, you must purchase standard Rational ClearQuest software or Rational TestStudio which comes with standard Rational ClearQuest.

**Rational Robot** – Installs Rational Robot, which also includes the following components:

- ▶ **Rational Administrator** – Use to manage a Rational repository. For information, see the *Using the Rational Administrator* manual.
- ▶ **Rational LogViewer** – Use to review and analyze test results. For information, see the *Using Rational Robot* manual.
- ▶ **Rational SiteCheck** – Use to manage Internet and intranet Web sites. For information, see the *Rational SiteCheck Try it!* card and the Rational SiteCheck Help.
- ▶ **Rational TestManager** – Use to plan your tests, manage test assets, and create a manual script (a set of testing instructions to be run by a human tester). You can run a manual script in TestManager or on the Web. For information about installing the **TestManager - Manual Script Execution component** to run manual scripts on the Web, see *Installing Web Server Components* on page 25. For information about TestManager, see the *Using Rational Robot* manual.
- ▶ **Comparators** – Includes the Object Properties, Text, Grid, and Image Comparators. Use to view and analyze the results of verification point playback. For information, see the *Using Rational Robot* manual.



## How to Install Rational TeamTest or Rational Robot

To install Rational TeamTest or Rational Robot:

1. Turn on the computer to start Windows.
2. Log in using an account with Administrator privileges.
3. Quit any applications before installing any Rational products.
4. Determine the type of database that you need for a Rational repository and/or a ClearQuest database. For more information, see *Determining a Database Type* on page 6.
5. Insert the CD into your CD drive. The installation starts automatically.  
If the installation does not start automatically, do the following:
  - a. Click **Start** → **Run**.
  - b. Type *drive:\SETUP.EXE*, and then click **OK**.
6. Click **Next**.
7. Click **Install Rational Product**, and then click **Next**.
8. Select the license you want, and then click **Next**. For information about software licenses, click **Help**. Alternatively, see the *Administering Licenses for Rational Software* manual or the Rational License Administrator online Help.
9. Select one of the following from the list of available products, and then click **Next**.
  - **Rational TeamTest**
  - **Rational Robot**

**NOTE:** Although you can select many different products for installation, your temporary and permanent license will only allow you to run the product applicable to the license. Do not install products for which you do not have a license; they will not run.

10. Read the terms of the license agreement carefully, select one of the following, and then click **Next**.

**Yes, I accept the agreement.** If you accept the agreement, the Setup program continues.

**No, I don't accept the agreement.** If you do not accept the agreement, the Setup program ends.

11. Select the setup configuration you prefer, and then click **Next**.

**NOTE:** You cannot select the **Minimal** configuration for Rational TeamTest or Rational Robot installation.

**Typical** – Installs the most commonly used features for this product.

**Custom/Full** – Lets you specify which products or features to install.

**Compact/Laptop** – Installs the minimal software needed to run this product.

12. If the **Update Shared Components** page appears, do one of the following:

- Click **Next** to install the shared components listed. Setup installs the U.S. English versions of the files. It does not overwrite newer versions of the files.

**Replace files with newer versions in English** – Available only if you installed earlier versions of the shared files in a non-U.S. English language. Select to replace your version of the shared components with the U.S. English version. Clear to exit setup and install the shared files yourself.

- Click **Cancel** to exit Setup and install the shared files yourself.

**NOTE:** A shared component is software provided by a company other than Rational Software Corporation. It is potentially available to other applications on your system. In general, we recommend that you let the Rational setup procedure install shared components for you.

## When to Install Shared Files Yourself

You may want to install shared files yourself under the following circumstances:

- ▶ You are using a U.S. English system, but installing new files may invalidate your current environment. In this case, you need to determine how to correct your environment so you can run existing tools and the Rational products that you want to install.
- ▶ Your site may mandate that you obtain shared files directly from the source — for example, from Microsoft — rather than using files supplied by a third party. Or, your site may prohibit end-users from installing shared components.
- ▶ You may want to install equivalent files that are localized to your language. Rational Software supplies U.S. English versions of shared files.
- ▶ There may be a later version of the files available. Rational products should work with the supplied version of shared files or any later versions.

13. Select how you are going to use this software, and then click **Next**.

**Client** – Run Rational TeamTest or Rational Robot locally or use the software as a client of a shared Rational repository on a server. You can also create local repositories.

**Administrator** – Set up Rational repositories or a Rational ClearQuest master database (schema repository) on a server for other users.

**Evaluator** – Evaluate a product for a limited time on your system.

14. View the selections that you have made, and if correct, click **Next**.

15. Click **Finish** when done.

Your system restarts.

## Removing Your Software

To remove Rational software products, make sure that no one is using the Rational software on your system. You cannot remove files that are in use. To remove Rational software from a Windows NT system, you must have Windows NT administrator privileges on the local machine. The Rational Software Setup program does not remove directories that contain files that you have created using Rational software products.

To remove Rational software from your computer:

1. Click **Start** → **Settings** → **Control Panel**.
2. Click **Add/Remove Programs**.
3. Select the Rational product that you want to remove, and then click **Add/Remove**.

## After Installation

---

The section contains information about upgrading, and installing additional components after you install Rational TeamTest or Rational Robot.

### Upgrading from SQA Suite 6.x

If you are not upgrading from SQA Suite 6.x, you can skip this section and go to *Installing the Rational Test Enablers* on page 22.

## Summary of Tasks

The following table lists tasks that you use to test an application, the component you used in SQA 6.x for each task, and the component that you now use in Rational TeamTest or Rational Robot to do the same task:

| To   | For SQA Suite 6.x, you used | For Rational TeamTest or Rational Robot, you use  |
|--|-----------------------------|---|
| Create a repository.   | SQA Administrator           | Rational Administrator  |
| Create test requirements.  | SQA Manager                 | Rational TestManager  |
| Create scripts or procedures.  | SQA Robot                   | Rational Robot  |
| Check for pass/fail of scripts.                                      | SQA Log Viewer              | Rational LogViewer  |
| Track defects.   | SQA Manager                 | Rational ClearQuest   |
| Run a report on a defect.  | SQA Manager                 | Rational ClearQuest   |
| Run a report on test coverage.                                       | SQA Manager                 | Rational TestManager  |
| Customize a report format used to track defects in your application. | SQA Manager                 | Rational ClearQuest<br><b>Note:</b> To customize reports, you must install Crystal Reports, which comes with Rational TeamTest. For more information, see <i>Installing Crystal Reports</i> on page 27. |

## New Terminology

The following table lists the terminology that was used in SQA Suite 6.x and the new terminology that is in Rational TeamTest and Rational Robot:

| SQA Suite 6.x term  | New term                                     |
|---------------------|--|
| SQA Manager         | Rational TestManager and Rational ClearQuest |
| SQA OCX             | Rational ActiveX Test Control                |
| SQA Test Log Viewer | Rational LogViewer                           |

*(Continued)*

| <b>SQA Suite 6.x term</b> | <b>New term</b>                     |
|---------------------------|-------------------------------------|
| SQA Text Comparator       | Text Comparator and Grid Comparator |
| SQAVu language            | VU language                         |
| test case                 | verification point                  |
| test procedure            | script                              |

## Upgrading a Rational Repository

You can use data from an existing SQA Suite 6.x repository in a new Rational repository. When you create a repository in the current release, the Create Repository wizard gives you the option of initializing a repository with data from an existing repository.

For information about creating a Rational repository with data from an existing repository, see the *Using the Rational Administrator* manual.

## Long File Names

Robot now supports long file names with spaces. Because of this, a script (formerly called a test script) no longer has a separate ID (which had a maximum of eight characters). The name of the script, which can have a maximum of 40 characters, is now used as the file name.

## Scripting Languages

You no longer need to select a GUI scripting language at installation. The SQA Basic language is used for all GUI scripts.

## Using Defect Reports

Your Rational TeamTest software comes with special defect reports to help you manage your testing efforts. Use Rational ClearQuest to run these special reports to track your defects when testing applications. When you create a Rational repository that contains an associated ClearQuest database, you automatically get these defect reports and report formats to use with ClearQuest. For more information about creating a repository with a ClearQuest database, see the section about creating a repository in Chapter 2 of the *Using the Rational Administrator* manual.

If you want to customize a defect report, create a new report, or customize a report format, you can use Rational ClearQuest. To customize a report format, you must install Crystal Reports 6.0 Professional Edition, which comes with your Rational TeamTest software.

To install Crystal Reports:

- ▶ Use the Crystal Reports installation directions that come with the Crystal Reports CD.

## Using SQA 6.x Repository Data in a Rational Repository

You can use data from an existing SQA Suite 6.x repository in a Rational repository. When you create a new Rational repository, the Create Repository wizard gives you the option of initializing a repository with data from an existing SQA Suite 6.x repository.

For information about creating a Rational repository with SQA Suite 6.x data, see *Creating a Repository* in Chapter 2 of the *Using the Rational Administrator* manual.

### *When to Convert SQA Suite 6.x Repository Data*

We recommend that you convert SQA Suite 6.x repository data to Rational repository data after you finish a project.

The following table lists the data that is converted from a SQA Suite 6.x repository to a Rational repository:

| Type of SQA Suite 6.x data  | Converted? |
|---|------------|
| Custom reports and graphs   | No         |
| Defects<br>(For information about defects, see <i>Details About Converting Defects</i> on page 15.) | Yes        |
| E-mail rules  | No         |
| Filters for defects or test procedures  | No         |
| Groups<br>(Privileges are not converted.)   | Yes        |
| List reports  | No         |
| LoadTest schedules  | No         |
| Projects  | Yes        |
| Requirements  | Yes        |
| Test cases<br>(called <i>verification points</i> in a Rational repository)                          | Yes        |
| Test logs   | No         |

*(Continued)*

| Type of SQA Suite 6.x data  | Converted? |
|---|------------|
| Test plans  | Yes        |
| Test procedures<br>(called <i>scripts</i> in Rational repository)                             | Yes        |
| Users<br>(Privileges are not converted.)  | Yes        |
| Virtual user test procedures<br>(called <i>virtual user scripts</i> in a Rational repository) | No         |

### *Conversion Details*

When you create a Rational repository with SQA Suite 6.x data, the converter does the following:

- ▶ Adds the prefix “\_RENAMED\_” to a script name or verification point ID that has a period (.) in the name.
- ▶ Converts the period (.) in a script name or verification point ID to an underscore (\_).

For example, a script named `wn95.tst` converts to `_RENAMED_wn95_tst`. A verification point ID named `alpha.b2` converts to `_RENAMED_alpha_b2`.

### *Details About Converting Defects*

Rational TeamTest incorporates the change-request management technology of Rational ClearQuest to track defects. For your convenience, Rational ClearQuest 2.0 includes a specially designed defect form, the TestStudio defect form, similar to the SQA 6.x Manager defect form.

The following table lists each field in an SQA 6.x defect form and the comparable field in the TestStudio defect form. For more information about using the TestStudio form, see the *Using Rational Robot* manual.

**NOTE:** The word *List* in the Description column of the following table indicates that if you customize a list in SQA 6.x, it converts to a list in the TestStudio defect form.

| <b>SQA 6.x defect field</b> | <b>TestStudio defect field</b> | <b>Description</b>   |
|-----------------------------|--------------------------------|--|
| ID                          | New ID generated               | The SQA 6.x ID does not appear on the defect form, but you can use the query feature of ClearQuest to find it. For more information, see the Rational ClearQuest Help.   |
| Description                 | Headline/Description           | Converts the first 125 characters or up to the first carriage return and places this text in the Headline field. The entire SQA 6.x Description field also appears in the Description field of the TestStudio defect form.                                   |
| Priority                    | Priority                       | List   |
| Severity                    | Severity                       | List   |
| Occurrences                 | (Not converted)                |  |
| Keywords                    | Keywords                       | List   |
| Symptoms                    | Symptoms                       | List   |
| Build Found                 | Notes                          | In SQA 6.x, a Build Found field is a text field. In Rational Suite 1.x, Builds are objects that contain log folders and logs. The text data from the Build Found field is stored in Notes. A Build object is not created for each SQA 6.x Build Found field. |
| Build Fixed                 | Notes                          | In SQA 6.x, a Build Fixed field is a text field. In Rational Suite 1.x, Builds are objects that contain log folders and logs. The text data in the Build Fixed field is stored in Notes. A Build object is not created for each SQA 6.x Build Fixed field.   |
| Proc                        | Script                         |  |
| Case                        | Verification Point             |  |
| Cycle                       | (Not converted)                |  |
| Reported By                 | Reported By Contact            |  |
| Reported By Company         | Reported By Company            |  |
| Hardware                    | Hardware                       | List   |



*(Continued)*

| <b>SQA 6.x<br/>defect field</b> | <b>TestStudio<br/>defect field</b> | <b>Description</b>   |
|---------------------------------|------------------------------------|--|
| Operating System                | Operating System                   | List   |
| Other                           | Other Environment                  |  |
| Test Station                    | (Not converted)                    | In SQA 6.x, a Test Station field is a text field. In Rational Suite 1.x, the Computers field replaces the Test Station field and is an object. A Computer object is not created for each SQA 6.x Test Station field. |
| Log                             | (Not converted)                    |  |
| Custom 1                        | Custom 1                           | List<br>If you customized the label for this field in SQA 6.x, the label is not converted. Use the ClearQuest Designer to customize this label.  |
| Custom 2                        | Custom 2                           | List<br>If you customized the label for this field in SQA 6.x, the label is not converted. Use the ClearQuest Designer to customize this label.  |
| Custom 3                        | Custom 3                           | If you customized the label for this field in SQA 6.x, the label is not converted. Use the ClearQuest Designer to customize this label.  |
| Attachment                      | Attachments                        | You can attach more than one file after you convert to a 1.x Rational Suite repository.  |
| Requirement                     | Requirement                        |  |
| Status History                  | History                            |  |
| Resolution                      | Resolution                         | List   |
| Resolution Description          | Resolution Note                    |  |
| Modified Software               | (Not converted)                    |  |

**NOTE:** The convert.txt file in the converted project directory contains the conversion status of each verification point and script. Use this file as a diagnostic tool if you have any problems with your data after conversion.

## Upgrading the TeamTest Schema

If you used the TeamTest schema available in ClearQuest 1.0, you need to upgrade the schema before you use ClearQuest 2.0. The TestStudio schema in ClearQuest 2.0 replaces the TeamTest schema.

To upgrade the TeamTest schema:

1. Click **Start** → **Programs** → *Rational product name* → **Rational ClearQuest** → **Rational ClearQuest Designer**.
2. If the Open Schema wizard appears, make sure that the schema you want to upgrade is not checked out, and then click **Cancel**. If the schema is checked out, check it in or undo check out.
3. Click **Package** → **Package Wizard**.
4. You must complete steps a. through f. for each of the following packages:
  - **TeamTest Upgrade 0.1**
  - **Repository Upgrade 0.2**
  - **RequisitePro 1.1**
  - **PQC 1.0**
  - **Email Upgrade 1.0**

If any of the packages listed above do not appear in the list, click **More Packages** to add the missing packages to the list, and then click **OK**.

- a. Select the package, and then click **Next**.
- b. Select a TeamTest-based schema to which you want to apply the package, and then click **Next**.
- c. Click **Defect** (or if you renamed the record type, click that record type), and then click **Finish**.
- d. This opens a new revision of the schema with the package that you applied.
- e. Click **File** → **Check In**.  
Add your comments, and then click **OK**.
- f. Click **OK**.

5. After you finish applying the last package, do the following:
  - a. Click **File** → **Open Schema** and open the schema that you just upgraded using the Open Schema wizard.
  - b. Double-click **Record Types**.
  - c. Double-click **Defects**.
  - d. Double-click **Forms**.
  - e. For each of the two forms, complete steps **i.** through **iii.**
    - i. Double-click each form.
    - ii. Select the drop-down list next to the Project label, and then right-click **Properties**.
    - iii. Select **RepoProject** from the Field Name list, and then click **OK**.
6. Do the following to upgrade your database:
  - a. Click **Database** → **Upgrade Database**.
  - b. Click **Yes**.
  - c. Select the database to upgrade, and then click **Next**.
  - d. Select the latest version, and click **Finish**.
7. Click **File** → **Check In**.

Add your comments, and then click **OK**.
8. Click **OK**.
9. Click **Package** → **Package Wizard**.

You must complete steps **a.** through **g.** for the Resolution upgrade package.

  - a. Select the **Resolution Upgrade 1.0**, and then click **Next**.

If this package does not appear in the list, click **More Packages** to add the missing package to the list, and then click **OK**.
  - b. Select a TeamTest-based schema to which you want to apply the package, and then click **Next**.
  - c. Click **Defect** (or if you renamed the record type, click that record type), and then click **Next**. The Setup State Types page of the Package Wizard appears.
  - d. Under the State Type column, choose **Resolved** in the row of the state that you want to set to resolved.
  - e. Click **Finish**.

- f. Click **File** → **Check In**.

Add your comments, and then click **OK**.

- g. Click **OK**.

10. Click **File** → **Exit** to close the ClearQuest Designer.

## Installing SQL Anywhere Server Database

If you created an SQA Suite 6.1 SQL Anywhere Server repository and want to use data from that repository in a 1.5 SQL Anywhere Server database, you must configure existing 6.1 SQL Anywhere clients to access the 1.5 SQL Anywhere Server database.

Since you cannot run a 1.5 and a 6.1 SQL Anywhere Server on the same computer, do the following to gain access to a 6.1 SQL Anywhere Server database:

1. Click **Start** → **Programs** → *Rational product name* → **Rational Administrator**.
2. Double-click **SQL Anywhere Database Servers** in the left pane of the Administrator to display all databases.
3. Right-click the 7.0 SQL Anywhere database that you want to use, and then click **Properties**.
4. Click the **Advanced** tab.
5. In the **Additional database server switches** box, type:

```
pathname\databasefilename -n databasename
```

where *pathname* is the path to the 6.1 database file,  
*databasefilename* is the name of the 6.1 database file,  
and *databasename* is the name of the 6.1 database.

For example:

```
c:\repo\sqlanydb\sqa61.db -n mydb
```

6. Click **OK**.

## How to Install the Sybase SQL Anywhere Database Server Software

When you install the SQL Anywhere Database Server, it installs the Rational Administrator and other Rational testing components that you need to manage Rational repositories in a networked, client/server environment. The SQL Anywhere Database Server provides tools, samples, and related library files for your SQL Anywhere Database Server. Installing the SQL Anywhere Database Server software does not require a separate license.

(A **Rational repository** is a group of databases that stores application testing information such as scripts and logs.)

**NOTE:** You must install the SQL Anywhere Database Server software on a network server running Microsoft Windows NT. Installing the SQL Anywhere Database Server software does not require a license.

To begin the installation:

1. Turn on the computer to start Windows.
2. Log in using an account with Administrator privileges.
3. Quit any applications before installing any software product.
4. Insert the CD into your CD drive. The installation starts automatically.

If the installation does not start automatically, do the following:

- a. Click **Start** → **Run**.
  - b. Type *drive:\SETUP.EXE*, and then click **OK**.
5. At the Rational Software Setup screen, click **Next**.
  6. Click **Install Unlicensed Tools**, and then click **OK**.
  7. Select **Sybase SQL Anywhere Database Server** from the list of available products, and then click **Next**.
  8. Read the terms of the license agreement carefully, select one of the following, and then click **Next**.
    - **Yes, I accept the agreement.** If you accept the agreement, the Setup program continues.
    - **No, I don't accept the agreement.** If you do not accept the agreement, the Setup program ends.

9. Select **Typical**, and then click **Next**.

**NOTE:** You can only select the **Typical** type of configuration for the Sybase SQL Anywhere Database Server installation.

10. Select **Administrator** to set up a server, and then click **Next**.
11. View the selections that you have made, and if correct, click **Next**.

**NOTE:** Although the summary page asks you to verify that you have a license key for this product, you do not need a license for the SQL Anywhere Database Server software.

12. Click **Finish** when done.

## What to Do Next

After you install the SQL Anywhere Database Server software, you must configure the SQL Anywhere Database Server. For information about configuring the database server, see Chapter 4 in the *Using the Rational Administrator* manual.

## Installing the Rational Test Enablers

The Rational Test Enablers consist of the following:

- ▶ **Rational ActiveX Test Control** – Install to test the properties of the ActiveX controls in your application-under-test using Rational Robot.

**NOTE:** If you are using a development environment other than PowerBuilder, Oracle Forms, Visual Basic, Java, or HTML, and you want to test the properties of your ActiveX controls, you must manually add the Rational ActiveX Test Control to each OLE container in your application. For instructions, see the documentation that comes with your development environment.

The ActiveX Test Control provides communication between any OLE container and Robot. It is a non-intrusive control and has no impact on the behavior or performance of your application. At runtime, the Rational ActiveX Test Control is not visible.

- ▶ **Rational Test Java Enabler** – Required to test Java applets running in a browser, or to test stand-alone Java applications. This Enabler scans your hard drive for Web browsers and Sun JDK installations that Robot supports and enables only those environments currently installed on your system. Run the enabler each time you install a new Java environment (such as a new release of a browser or JDK).
- ▶ **Rational Test Oracle Forms Enabler** – Install to test Oracle Forms 4.5 and 5.0 applications. Installs both the Rational Test Oracle Forms Enabler and the Rational Test Object Testing Library for Oracle Forms.

**NOTE:** Be sure to install Oracle Forms 4.5 or 5.0 and the Oracle Open Client Adapter for ODBC before you install the Rational Test Oracle Forms Enabler.

- ▶ **Rational Test Visual Basic Enabler** – Install to test Visual Basic 4.0 applications. Ensures that all forms in your project, including MDI forms, contain the Rational ActiveX Test Control. This Enabler is an add-in (extension) to Visual Basic 4.0. For more information about Visual Basic add-ins, see your Visual Basic documentation.

**NOTE:** You do not need the Visual Basic Enabler to test Visual Basic 5.0 and later applications.

For more information about the Rational Test Enablers, see the *Using the Rational Robot* manual.

To install the Rational Test Enablers:

1. Turn on the computer and start Windows.
2. Insert the CD into your CD drive. The installation starts automatically.

If the installation does not start automatically, do the following:

- a. Click **Start** → **Run**.
- b. Type *drive:***SETUP.EXE**, and then click **OK**.
3. At the Rational Software Setup screen, click **Next**
4. Click **Install Unlicensed Tools**, and then click **Next**.
5. Select **Rational Test Enablers**, and then click **Finish**.  
The Rational Test Enablers installation starts.

6. Select one of the following, and then click **Next**.
  - **Rational ActiveX Test Control**
  - **Rational Test Oracle Forms Enabler**
  - **Rational Test Java Enabler**
  - **Rational Test Visual Basic Enabler**
7. Follow the on-screen instructions to complete the installation.

## Installing the Sample Applications

The Rational sample applications consist of the following components:

- ▶ **Classics Online Sample application** – Use with the Rational Robot tutorial in the *Getting Started with Rational Robot* manual.
- ▶ **Small sample applets** – Use with the *Try it!* cards for quick and easy instructions about recording tests on controls created in specific development environments. You can install sample applets for Java, HTML, Oracle Forms, PowerBuilder, and Visual Basic development environments.
- ▶ **Sample repository** – Use with the Rational Robot tutorial and the *Try it!* cards. The sample repository installs automatically when you install a sample application or sample applet.

**NOTE:** Before you install and run the Oracle sample application for the *Try it! with Oracle* card, you must install Oracle Forms 4.5 or 5.0 and the Oracle Open Client Adapter for ODBC.

To install the sample application, sample applets, and sample repository:

1. Install Rational TeamTest or Rational Robot. For information about installing either product, see *Before You Begin* on page 2.
2. Click **Start** → **Programs** → *Rational product name* → **Rational Test** → **Set Up Rational Test Samples**.
3. Select the sample application and the sample applets that you want to install:
  - **HTML Sample**
  - **Java Sample**
  - **Visual Basic Sample**
  - **PowerBuilder Sample**



- Oracle Sample
  - Classics Online
4. Click **Next**.

## Installing Web Server Components

The Web Server components that you can install with Rational TeamTest and Rational Robot consist of the following:

### With Rational Robot:

- ▶ **Rational TestM anager - Manual Script Execution** – Rational TestM anager lets you create a manual script (a set of testing instructions to be run by a human tester) and then run the manual script in TestM anager or on the Web. To run a manual script on the Web, you must install the **Rational TestM anager - Manual Script Execution** component.

### With Rational TeamTest:

- ▶ **Rational TestM anager - Manual Script Execution** – Rational TestM anager lets you create a manual script (a set of testing instructions to be run by a human tester) and then run the manual script in TestM anager or on the Web. To run a manual script on the Web, you must install the **Rational TestM anager - Manual Script Execution** component.
- ▶ **Rational ClearQuest Web** – ClearQuest Web lets you enter defects remotely using a Web-based interface.

To install Web Server components, do the following custom installation:

1. Turn on the computer to start Windows.
2. Log in using an account with Administrator privileges.
3. Quit all applications before installing any Rational products.
4. Insert the CD into your CD drive. The installation starts automatically.  
If the CD does not start automatically, do the following:
  - a. Click **Start** → **Run**.
  - b. Type *drive:\SETUP.EXE*, and then click **OK**.
5. At the Rational Software Setup screen, click **Next**.
6. Click **Install Rational Product**, and then click **Next**.

7. Select the license you want, and then click **Next**. For information about software licenses, click **Help**. Alternatively, see the *Administering Licenses for Rational Software* manual or the Rational License Administrator online Help.
8. Select one of the following from the list of available products, and then click **Next**:
  - Select **Rational TeamTest** to install ClearQuest Web.
  - Select **Rational TeamTest** or **Rational Robot** to install **TestManager - Manual Script Execution**.
9. Read the terms of the license agreement carefully, select one of the following, and then click **Next**.
  - **Yes, I accept the agreement.** If you accept the agreement, the Setup program continues.
  - **No, I don't accept the agreement.** If you do not accept the agreement, the Setup program ends.
10. At the **Setup Configuration** page of the Setup wizard, click **Custom/Full**, and then click **Next**.
11. Optionally, clear all check boxes on the **Choose Features** page.

**NOTE:** If you want to create manual scripts on the Web server, then you must install Rational Robot on the Web server.

12. Double-click **Web Server Components**.
  13. Select one or both of the following check boxes:
    - **Rational ClearQuest Web** – Installs Rational ClearQuest Web.
    - **Rational TestManager/Web** – Installs the **TestManager - Manual Script Execution** component.
  14. Follow the on-screen instructions to complete the installation.
- The Rational Setup wizard displays a series of dialog boxes that guide you through the installation process and prompt you for information.
15. Click **Finish** when done.

Your system restarts.

## Installing Crystal Reports

Crystal Reports lets you customize defect reports that come with Rational TeamTest. Crystal Reports also lets you create new report formats. This software comes on a separate CD in your Rational TeamTest software kit.

To install Crystal Reports 6.0 Professional Edition:

- ▶ Use the Crystal Reports installation directions that come with the CD.

## Troubleshooting Your Installation

---

If you encounter any problems running the Rational Setup wizard, try the following suggestions before you call Rational Technical Support for help:

- ▶ Stop all applications before you begin the installation.
- ▶ Turn off all virus protection software. These programs often run in the background and interfere with the installation and file decompression process.
- ▶ Turn off any user interface managers or desktop environments that run on Microsoft Windows.
- ▶ Change to a standard VGA video driver while Rational Setup is running, or disable video features such as virtual screens or screen switching.
- ▶ Change to a standard mouse driver, or disable special mouse features that perform tasks such as leaving pointer trails or changing pointer sizes.



# ▶ ▶ ▶ Index

## A

- ActiveX Test Control
  - about 22
  - installing 23

## C

- Classics Online application
  - about 24
  - installing 24
- converting defects 15
- converting repositories from SQA Suite 6.x 14
- Crystal Reports
  - installing 27
  - software requirements 3
- customer support vii

## D

- database types
  - Rational ClearQuest 5
  - Rational Test 4
- defect reports
  - customizing 13
  - using ClearQuest 13
- defects, converting from SQA Suite 6.x 15
- development environments, testing 24

## E

- errors in installation 27

## H

- hardware requirements
  - Rational Robot 3
  - Rational TeamTest 2
  - SQL Anywhere Server software 3
- help desk vi, vii
- hotline
  - vi, vii

## I

- installing
  - ActiveX Test Control 23
  - Classics Online application 24
  - Crystal Reports 27
  - Rational ActiveX Test Control 23
  - Rational ClearQuest Web 25
  - Rational Robot 9
  - Rational TeamTest 9
  - Rational Test Enablers 23
  - Rational Test Java Enabler 23
  - Rational Test Oracle Forms Enabler 23
  - Rational Test Visual Basic Enabler 23
  - sample application 24
  - sample repository 24
  - small sample applets 24
  - Sybase SQL Anywhere 21
  - TestManager - Manual Script Execution 25
  - Web Server components 25

## Index

### L

long file names 13

### M

Microsoft Access, when to use 4, 6

### N

network requirements for SQL Anywhere Server 3

### R

Rational ActiveX Test Control

about 22

installing 23

Rational ClearQuest

about special version of 8

choosing type of database for 5

database types 5

using to run defect reports 13

Rational ClearQuest Web, installing 25

Rational repositories 21

converting defects from SQA Suite 6.x 15

converting script file names 15

data converted 14

initializing data from SQA Suite 6.x 14

troubleshooting conversion from SQA Suite 6.x  
18

upgrading from existing repositories 13

upgrading from SQA Suite 6.x 13, 14

when to convert from SQA Suite 6.x 14

Rational Robot

about 8

hardware requirements 3

installing 9

software requirements 3

tutorial 24

upgrading from SQA Suite 6.x 3

Rational TeamTest

about 8

hardware requirements 2

installing 9

software requirements 2

upgrading from SQA Suite 6.x 3

Rational technical support vii

Rational Test database, choosing type of 4

Rational Test Enablers, installing 23

Rational Test Java Enabler

about 23

installing 23

Rational Test Oracle Forms Enabler

about 23

installing 23

Rational Test Visual Basic Enabler

about 23

installing 23

Rational TestManager - Manual Script Execution,  
installing 25

reports, customizing format 13

repositories 21

converting defects from SQA Suite 6.x 15

converting script file names 15

data converted 14

initializing data from SQA Suite 6.x 14

troubleshooting conversion from SQA Suite 6.x  
18

upgrading from SQA Suite 6.x 14

when to convert from SQA Suite 6.x 14

**S**

- sample application
  - about 24
  - installing 24
  - using with Rational Robot tutorial 24
- sample repository
  - about 24
  - installing 24
  - using with Rational Robot Try it! cards 24
  - using with Rational Robot tutorial 24
- scripting languages 13
- scripts, converting file names 15
- small sample applets
  - about 24
  - installing 24
  - using with Try it! cards 24
- software requirements
  - Crystal Reports 3
  - Rational Robot 3
  - Rational TeamTest 2
- SQA Suite 6.x
  - accessing data from 20
  - installing Rational Robot and 2
  - installing Rational TeamTest and 2
  - long file names 13
  - scripting languages 13
  - terminology 12
  - upgrading from 3
  - upgrading repositories 14
  - upgrading to Rational TeamTest or Rational Robot 3
- support, technical vii

## Sybase SQL Anywhere

- accessing data from SQA Suite 6.x repository 20
- configuring database server 22
- installing 21
- when to use 4, 6

**T**

- TeamTest Schema, upgrading from 18
- technical support vii
- testing development environments 24
- troubleshooting conversion from SQA Suite 6.x 18
- troubleshooting installations 27

**U**

- upgrading
  - from ClearQuest 1.0 18
  - from SQA Suite 6.x 3
  - from TeamTest schema 18

**V**

- verification point IDs, converting 15

**W**

- Web Server components, installing 25

Index

Index-4