



OBJEC[®]TIME

Configuring OTL Fonts in Hummingbird Exceed

[Category](#) | [Purpose](#) | [Intended Audience](#) | [Applicable to](#) | [Description](#) | [Limitations](#) | [See also](#)

Category:

[Top](#)

Frequently Asked Questions

Purpose:

[Top](#)

To demonstrate how to set up ObjecTime Developer fonts in Hummingbird Exceed.

Intended Audience:

[Top](#)

ObjecTime Developers

Applicable to:

[Top](#)

ObjecTime 5.1 and up

Description:

[Top](#)


Setting up fonts in Hummingbird Exceed so the ObjecTime Developer is displayed correctly is not explained in great details in either the Getting Started guide or in the existing technical notes on the subject.

First, it is assumed that Exceed is already installed on your computer. If it is not, please refer to the Exceed manual for explanations on how to do this. The reader may also gain useful knowledge by reading the Exceed manual for font installation.

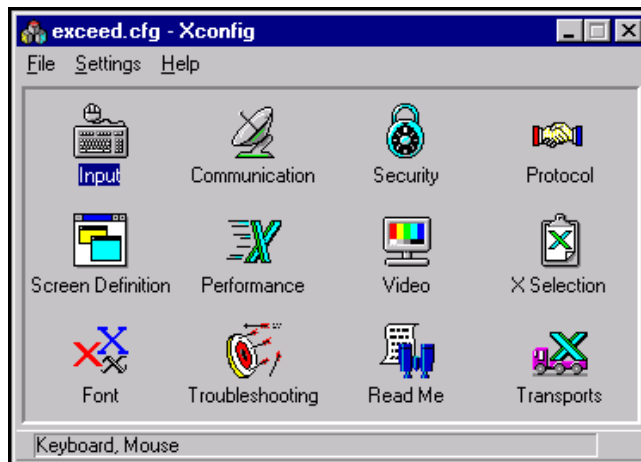
1. Start up Exceed. This should display the following toolbox:




If this is not displayed, right click on the Exceed entry in the Windows 95 or NT taskbar and select "Tools >," "Toolbar >," and "Show."

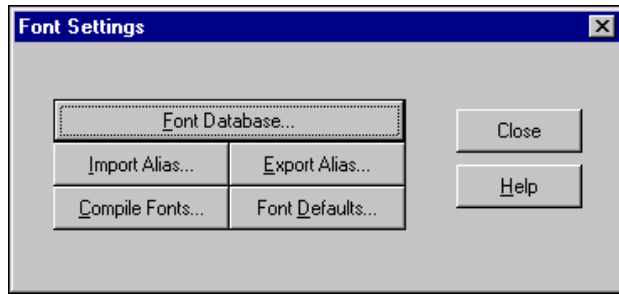
2.  Select the Xconfig tool:


This should display the configuration menu window:

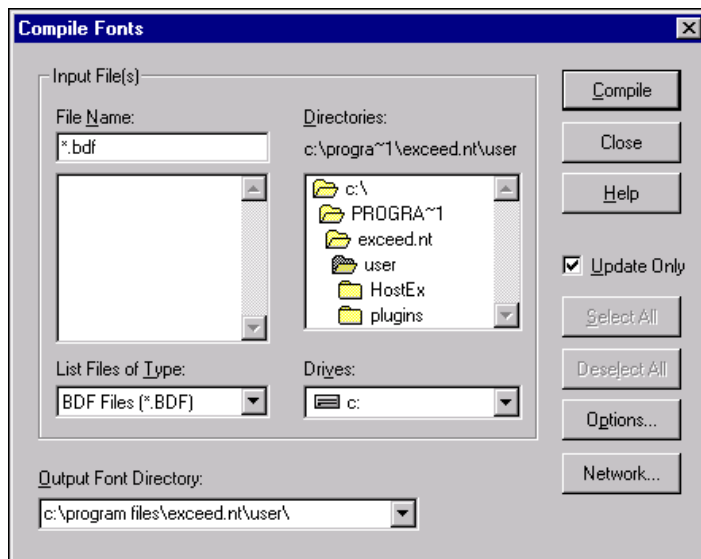


3.  Select the font configuration:

This should display the font settings window:

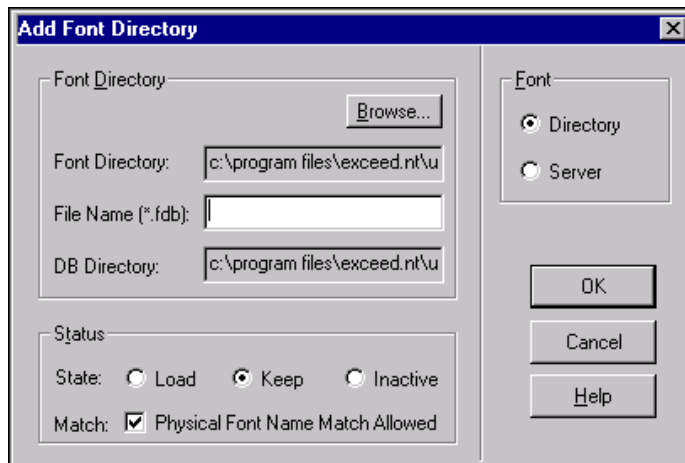



4. Select "Compile Fonts..."  to bring up the font compilation dialog box.

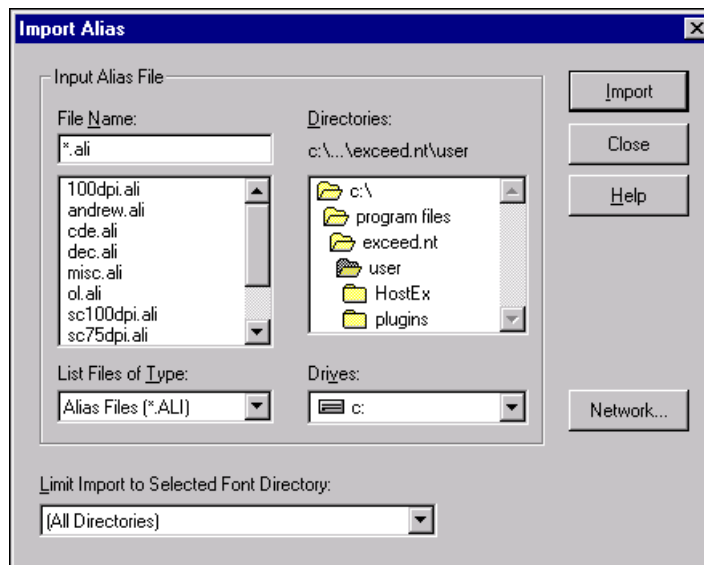


Browse to directory "C:\ObjecTime\Developer5.x\fonts\bdf" (where "C" is the drive where ObjecTime is installed and x represents the version number, e.g., 5.1) and select all the fonts in the directory. Press "Compile" to compile the fonts.

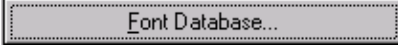
Exceed will compile the fonts and ask you if you want to create a library for these. Select the control to create the new library and name it "OTDFonts." Make sure the library is created with the "Keep" state.

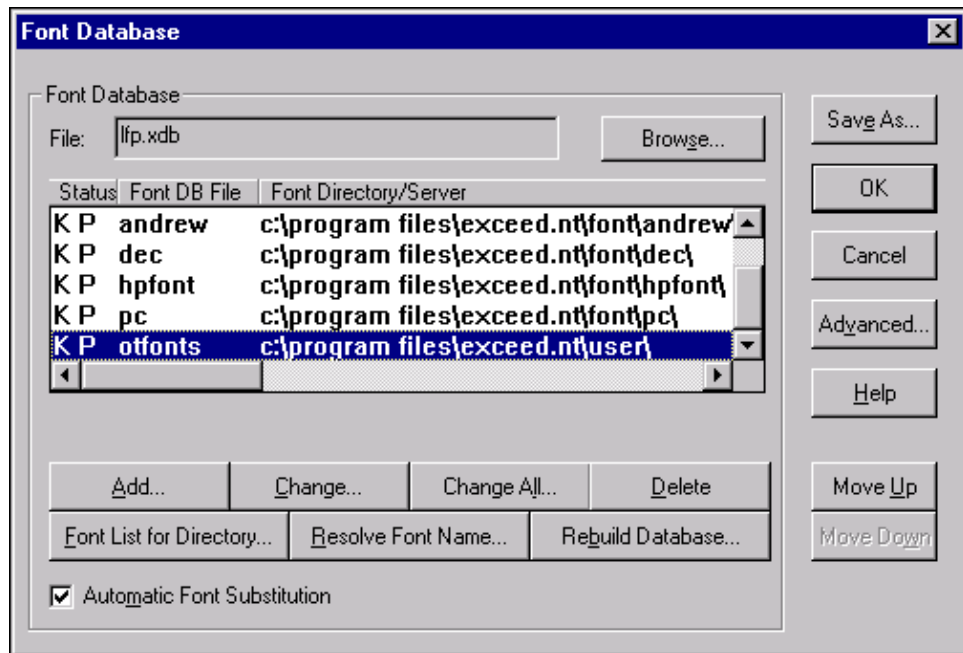


5. Select "Import Alias"  to bring up the alias importation dialog box.

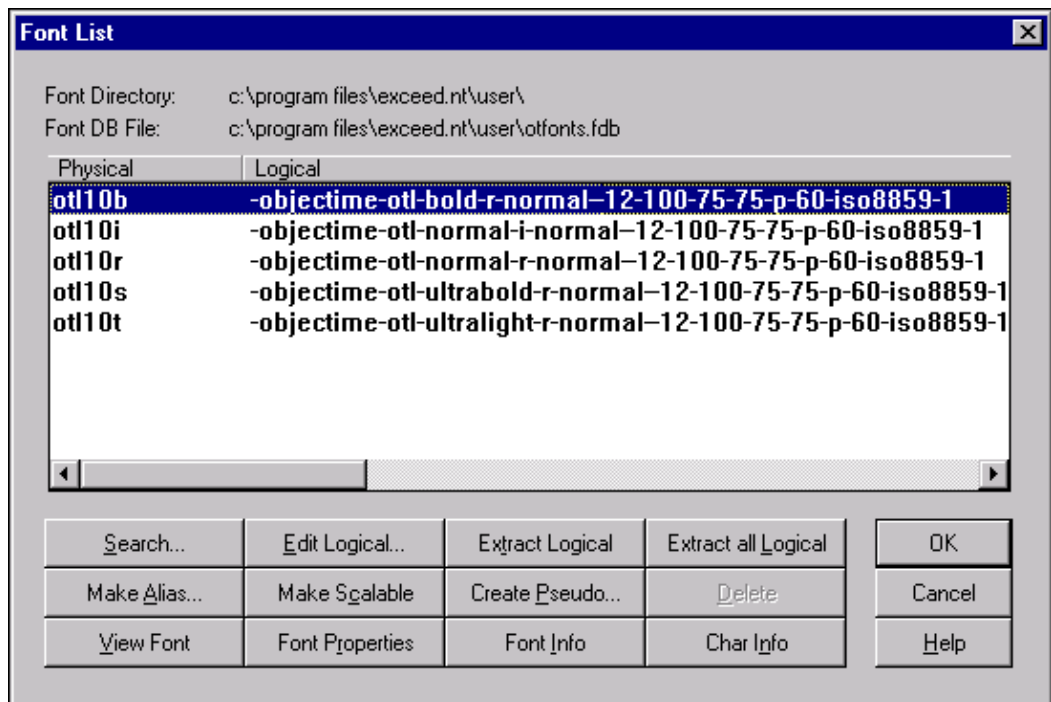


Select file "C:\ObjecTime\Developer5.x\fonts\sun\fonts.alias" (where "C" is the drive where ObjecTime is installed and x represents the version number, e.g., 5.1) and press " Import" to import the list of aliases.

6. Use "Font Database..."  to verify that the fonts are correctly installed, along with their aliases.



Selecting the font database that was just created (otlfonts) and pressing " Font List for Directory..." should display the following screen:



If the "Logical" and "Physical" columns contain the same data, the import of the alias file did not occur properly. You will have to enter the alias by hand to match the above display.

7. Open a new Xterm window and execute the following command:

```
xlsfonts | grep otl
```

This should result in the following output:

```
-objectime-otl-bold-r-normal--12-100-75-75-p-60-iso8859-1  
-objectime-otl-normal-i-normal--12-100-75-75-p-60-iso8859-1  
-objectime-otl-normal-r-normal--12-100-75-75-p-60-iso8859-1  
-objectime-otl-ultrabold-r-normal--12-100-75-75-p-60-iso8859-1  
-objectime-otl-ultralight-r-normal--12-100-75-75-p-60-iso8859-1  
otl10b  
otl10i  
otl10r  
otl10s  
otl10t
```

8. Shutdown and restart Exceed.

That's it! You're done!

Starting ObjecTime should now result in properly displayed fonts!

Limitations:

[Top](#)

Only tested with Hummingbird Exceed version 6.0.

See also:

[Top](#)

Other ObjecTime Limited technical notes:

- Fonts - Using Hummingbird as PC Xterm
 - Fonts - PC and Mac based X terminal software
 - ObjecTime Fonts Setup for XTerm Booting from Other Server
-



Copyright © 1998-1999, ObjecTime Limited.