

IBM® Rational® TestManager

Highlights

- ***Manages manual testing and reporting***
- ***Provides centralized testing control center***
- ***Agnostic to the development platform or language***
- ***Simplifies communication about product plans, requirements, and changes***
- ***Flags test cases potentially impacted by change***
- ***Handles virtually any type of test script***

Test teams are expected to perform a variety of tasks that go beyond functional, performance and regression testing. From tracking requirements changes to providing up-to-date reports to giving developers the information they need to find and fix defective code – testers are asked to do more than simply test. And today testers are under pressure to finish their work in less time than ever before in order to test a greater number of projects.

IBM® Rational® TestManager V2003 helps testers do their jobs faster, and automates the communication of changes and status across the project team.

Control the Testing Process

IBM Rational TestManager is the tester's desktop. Testers and team members use it to plan, manage, organize, execute, evaluate and report on individual test cases or entire test plans. Every type of testing activity can be controlled at this one central point – from manual regression testing to defect tracking to scaling-up automated stress testing.

Using Rational TestManager, test cases can be logically linked to any input source. Integration with IBM Rational RequisitePro® provides automatic notification of requirements changes. This eliminates the common and error-prone process of manually correlating requirements changes to test cases – greatly improving workflow.

Improve Team Communication

The entire project team benefits from IBM Rational TestManager's tight integration with IBM Rational ClearQuest®, a defect management tool, and with IBM Rational RequisitePro, because the integration allows analysts and developers to query test results from their own perspectives whenever they need to.

IBM Rational TestManager improves testing productivity throughout the development lifecycle by centralizing control of testing processes and making it easy to share test results.

Features that Benefit Testers and Development Teams

Automate Test Plans: In IBM Rational TestManager, a test plan is an easy-to-use dynamic structure that is the framework for organizing the testing process.

Manage all Types of Testing: Manage functional, performance, manual, integration, regression, configuration and component testing right from the IBM Rational TestManager desktop.

Execute Multiple Test Types at Once: Execute, in the same test run, a test suite containing multiple types of scripts (manual, Java, GUI, load). Execute functional and performance tests simultaneously, on one machine or distributed across a network.

Link Test Cases to Requirements: As requirements change, IBM Rational TestManager automatically flags the test cases related to the change, saving testers precious time.

Test Evaluation: An integrated log viewer builds a full log for each test run, including pass, fail, warning and informational tags. To learn the details of a failure, just double-click on the test item.

Meaningful Reports: IBM Rational TestManager includes a series of predefined graphical and textual reports. Additional reports on test metrics, results, pass-fail status can be defined or extended with Crystal Reports.

Manage Manual Testing

IBM Rational TestManager V2003 automates the administrative aspects of manual testing.

With IBM Rational TestManager you can:

- Create a test plan that organizes the manual testing workflow.
- Log the steps and results of executing manual scripts as they are performed.
- Generate automated reports of manual test results and metrics.

IBM Rational TestManager V2003 contains a rich set of industry-leading features to help you manage manual testing:

- Associate a text description or a file to a test in order to better describe the expected results.
- Identify the specific verifications to perform for a test to either pass or fail.
- Run a manual script in a small, step-by-step dialog to minimize interference with the application-under-test.
- Capture and compile test results for one test or 1,000, and for results obtained by one individual or an entire team.

- Import and export test scripts and designs to share them with other applications.
- Export manual scripts, test case designs, and configured test case designs to a text file.
- Integrate manual test results with manual test results with automated functional and performance test results

Ease into Test Automation

While providing all testers with easy-to-use test management capabilities, using IBM Rational TestManager to automate the management of manual testing is an intelligent first step toward automating testing itself. As later steps, IBM Rational test automation, defect tracking and requirements tracking tools can be incrementally adopted.

Accelerate Success with IBM Rational Services

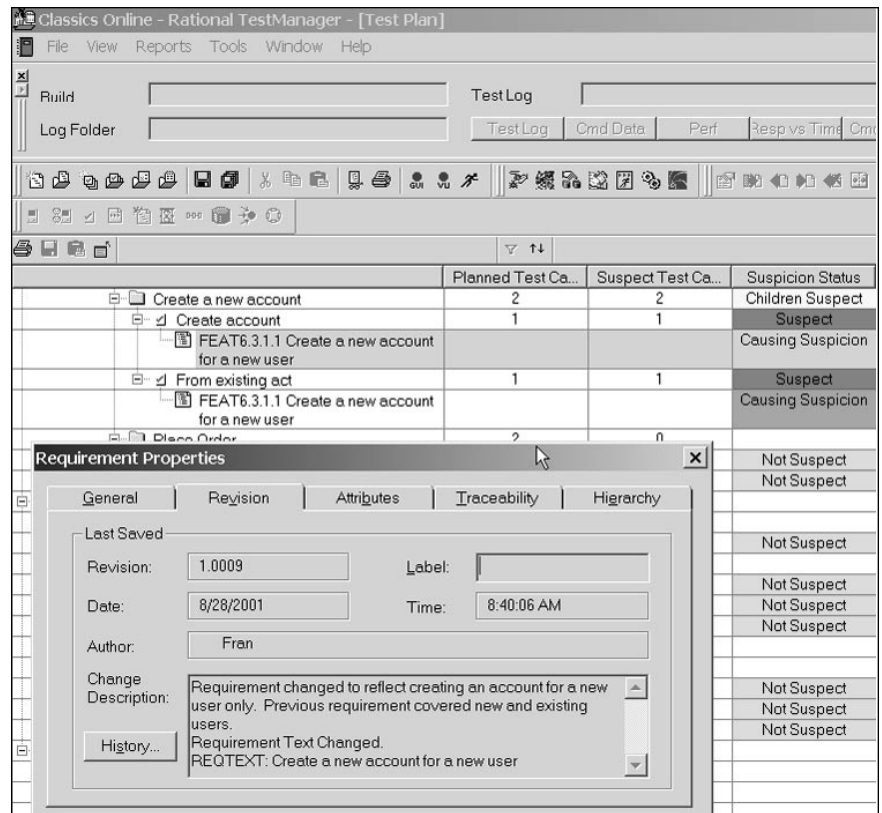
IBM Rational Robot is supported by a worldwide services organization that combines online resources with personalized training, consulting, and technical support. Explore articles, whitepapers, courseware, and more on IBM Rational Developer NetworkSM, the online community for development professionals who use IBM Rational tools and best practices. Enhance your team's capabilities with skilled consulting, technical support, and training resources. IBM Rational Services accelerate success as they build a foundation for continuous software development improvement.

Unify Your Team with IBM Rational Suite

IBM Rational Robot is a member of the IBM Rational Suite product family. The Rational Suite family provides a comprehensive development platform that unifies your team, optimizes individual productivity, and simplifies adoption of the IBM Rational solution.

SPECIFICATIONS

- *Pentium II microprocessor with 300 MHz or better recommended*
- *200 MB free disk space*
- *128 MB RAM*
- *Microsoft Windows XP, Windows Millennium, Windows NT 4.0, Windows 2000, Windows 98 second edition*



Changes in the application's requirements are automatically flagged in the test case in IBM Rational TestManager.



© Copyright IBM Corporation 2003

IBM Corporation
Software Group
Route 100
Somers, NY 10589
U.S.A.

Printed in the United States of America
04-03
All Rights Reserved

IBM and the IBM logo are trademarks of International Business Machines Corporation in the United States, other countries, or both. Rational, Rational Suite, Rational Developer Network, and RequisitePro are trademarks or registered trademarks of Rational Software Corporation in the United States and/or other countries. Microsoft, Microsoft Windows 2000, 95, 98, and NT are trademarks or registered trademarks of Microsoft Corporation. All other names are used for identification purposes only and are trademarks or registered trademarks of their respective companies. ALL RIGHTS RESERVED. Made in the U.S.A.

Other company, product or service names may be trademarks or service marks of others.

The Rational Software home page on the Internet can be found at **ibm.com/rational**

The IBM home page on the Internet can be found at **ibm.com**

♻️ Printed in the United States on recycled paper containing 10% recovered post-consumer fiber.