



Rational® software

IBM® Rational RequisitePro®

Highlights

- **Combines the familiarity and ease of Microsoft Word documents with powerful database capabilities for more effective requirements management**
- **Helps you understand the impact of change so you can better manage it**
- **Integrates requirements across tools and teams to keep every-one informed of the most current requirements information**

Successful Requirements Management

Requirements management is a key process area for improving your project success. The better you communicate and manage your requirements, the better chance your projects have for delivering the right solution on time and on budget. At IBM Software Group, we understand that success starts with requirements management. And more effective requirements management starts with IBM® Rational RequisitePro®.

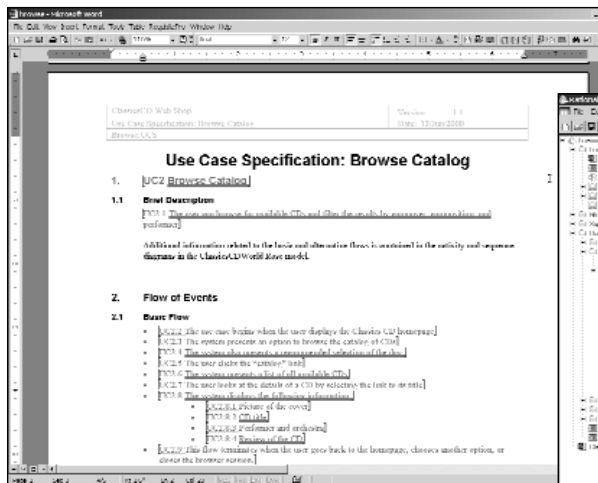
Regardless of what requirements management tools or processes you currently employ, consider that IBM Software Group has spent twenty years working with thousands of organizations like yours to solve their software challenges and optimize their

processes. IBM Rational RequisitePro is a powerful, yet easy to use tool that promotes better communication, enhances team collaboration, reduces your project risk and deeply integrates with other leading software development lifecycle tools.

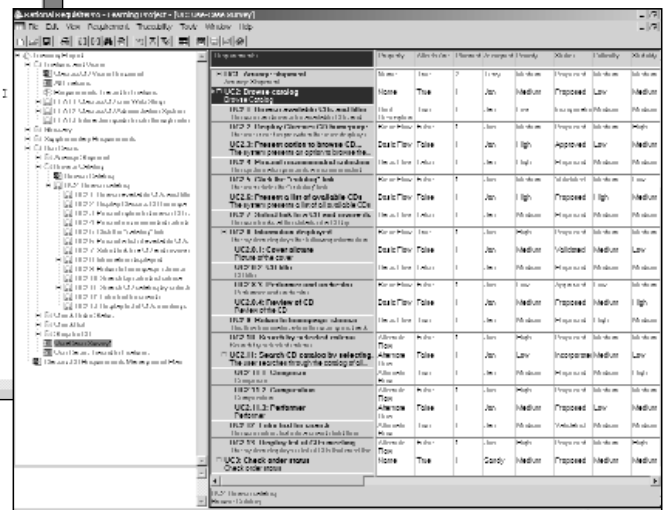
Power of a Database, Freedom of Word

In any effective requirements management process, recording the requirements that have been discovered during elicitation is a key step. This ensures accurate communication and management of the requirements as they evolve. Documents are a natural format for recording requirements and provide context, or supplementary requirement information.

Requirement documents are a familiar capture and communication mechanism, providing context and order. Dynamically linking requirements in documents to a database provides another powerful dimension for organizing and tracking the information.



The powerful interface allows you to organize requirement information in packages (folders) using a structure that best suits your needs, providing quick access to requirements information.



IBM Rational RequisitePro leverages the widely used and familiar Microsoft Word tool to ease requirement capture. Documents, though useful for requirement capture, are not an optimal environment to prioritize and organize information — activities that are best performed using a database. By linking requirements documents to a database, Rational RequisitePro marries the best of both worlds.

This unique architecture leverages the power of a database and the freedom of Word for more effective requirements management. Documents in IBM Rational RequisitePro are not simply input to or output from a requirements database. They contain the live

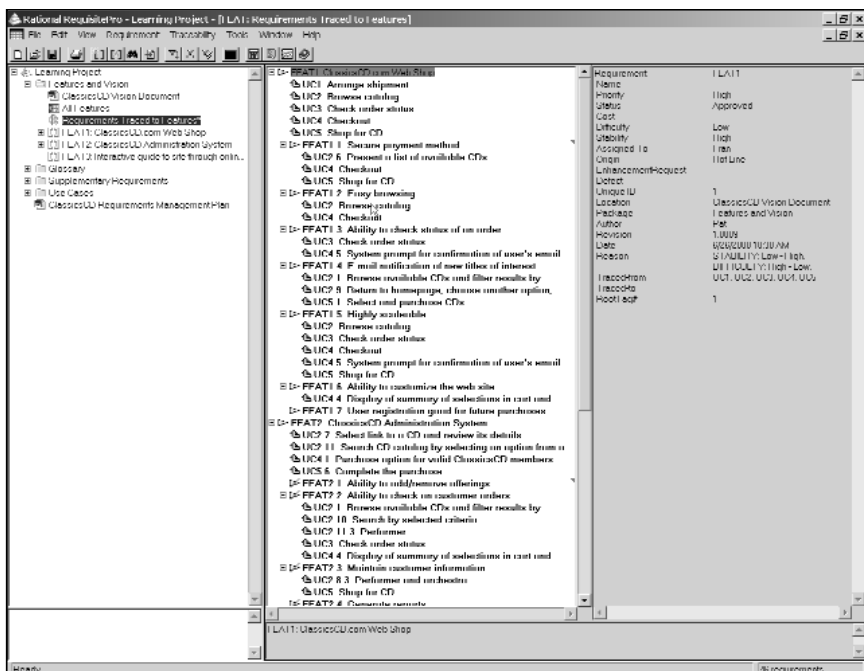
requirements allowing you to remain in a familiar Microsoft Word environment to modify requirements. The requirements in Word documents are dynamically linked to supplementary requirement information stored in a database. The database and documents are connected such that a simple double-click on the requirement in the database will launch Microsoft Word and take you directly to that requirement in the context of how you wrote it in the document. Rational RequisitePro supports a choice of non-proprietary, industry-standard enterprise databases (Oracle, Microsoft SQL Server, and Microsoft Access) with which you can easily organize

requirement information in packages (folders) using a structure that best suits your needs. From views into the database you can prioritize, link requirements and track changes.

Assigning attributes such as priority, difficulty, status, and version number help you manage your requirements in a way that is impossible using documents alone. IBM Rational RequisitePro provides standard attributes and attribute values out of the box while also being easily customizable to support your project's processes and terminology.

With the combined power of a database and freedom of Word, Rational RequisitePro supplements your use of Microsoft Word by providing a means to organize, sort, filter and track requirements contained within your Word documents — delivering the most robust and easy-to-use requirements management solution available.

IBM Rational RequisitePro comes with a Web interface, making requirements accessible to all team members, especially in remote locations or multi-platform environments. Access, query, modify, create requirements and requirements documents, and manage traceability through the IBM Rational RequisiteWeb interface.



Understand the Impact of Change

Change is inevitable. But change is not the enemy — it indicates responsiveness to stakeholder needs. Unmanaged change, on the other hand, sends many projects spiraling off course. IBM Rational RequisitePro helps you understand the impact of change as it occurs so you can better manage its effect on the project.

IBM Rational RequisitePro provides functionality to easily establish and analyze the impact of change. These features allow you to link related requirements, so that as change occurs to one requirement you can easily see its impact on other related requirements. Having real-time visibility of change lets you pinpoint its effect across the project and assess coverage for verification and validation. With the ability to perform impact analysis, you can make quick, informed decisions for scope management or resource reallocation. And as requirements evolve, each

Understanding traceability is easy with the Tree View. Requirement relationships are shown in a familiar expandable and collapsible way, while details for the highlighted requirement are shown at right.

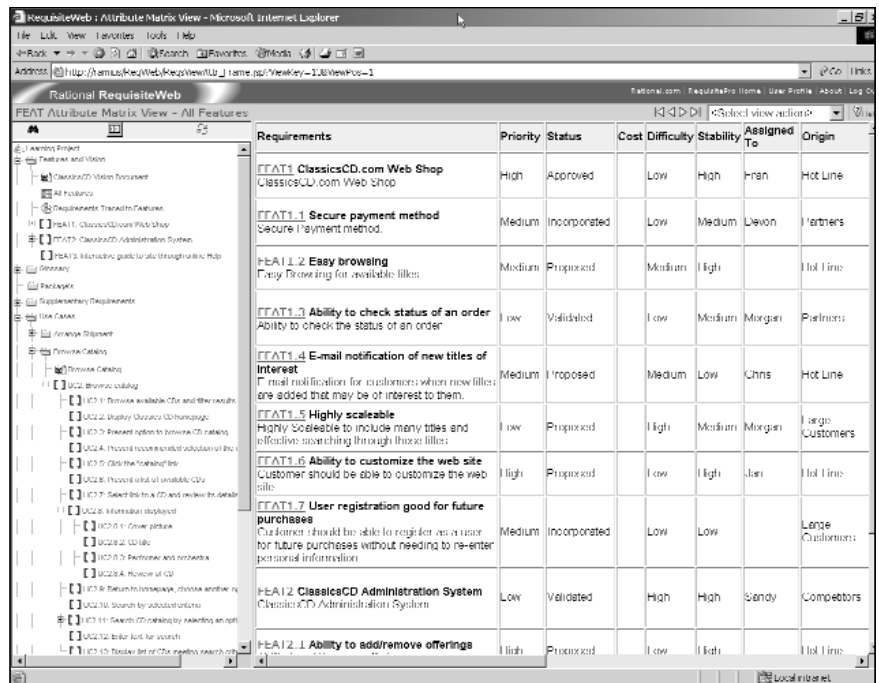
modification made is captured, tracked and fully documented in Rational RequisitePro. Requirement audit trails document the who, what, why and when a requirement modification is made, helping you to analyze its impact across the project. By understanding the impact of change, you are much better equipped to control changes that affect your project.

Integrate Requirements Across Tools and Teams

The better informed each project team member is, whether located locally or globally, of the requirements, the more accurately they can deliver a solution

that satisfies project or business needs. Integrating requirements with other lifecycle artifacts and processes ensures clear communication and saves time-consuming rework.

Through IBM Rational RequisiteWeb, the web interface for IBM Rational RequisitePro, remote team members can create, view and modify requirements and requirements documents. Requirements traceability can also be managed in Rational RequisiteWeb using the traceability matrix or traceability tree, which visually depicts relationships between requirements.



And through powerful integrations with other Rational software development tools from IBM Software Group, IBM Rational RequisitePro helps you integrate requirements across tools and teams optimizing team collaboration around the requirements.

Requirements Access for Developers

To ensure optimal design and minimize costly rework, your developers need access to requirements from where they sit. IBM Rational RequisitePro provides direct requirements access from both IBM Rational Rose® and IBM Rational XDE™ Professional.

Through its integration with IBM Rational Rose and IBM Rational XDE®, IBM Rational RequisitePro connects requirements with use-case models providing developers instantaneous access to the use case specifications from use case diagrams, as well as visibility into any requirements information. This functionality, known

as integrated use case management, helps ensure your developers implement the functionality that truly reflects customer needs, as they evolve.

In addition to integrated use case management, the IBM Rational RequisitePro—Rational XDE integration enables you to connect design elements in Rational XDE to requirements in Rational RequisitePro. By linking design elements with requirements you can easily review and assess the impact of requirements changes on design elements and keep your developers informed of changes that may impact their work.

Requirements Access for Project Managers

As customers and other stakeholders begin to use your product, requests for change inevitably result. The integration between IBM Rational RequisitePro and IBM Rational ClearQuest® simplifies the

incorporation of stakeholder feedback into the next iteration of your project by associating change requests to the requirements that fulfill them. The information housed in one tool is readily available from the other, making it easy to take into account the needs of your users when prioritizing next iteration requirements.

Requirements Access for Testers

Without access to requirements, how can testers be assured they are verifying the right thing? The integration with IBM Rational TestManager ensures that requirements serve as direct input to test case creation, so that testers and QA engineers can validate the system with confidence. And as changes to requirements occur, you are able to visually see which test cases are impacted by the change.

**Version Control with
IBM Rational ClearCase**

The integration with IBM Rational ClearCase® allows you to create baselines of requirement assets along with lifecycle artifacts including, among others, design models, test assets, and code.

**Software Engineering Best-Practices
of the IBM Rational Unified Process**

IBM Rational RequisitePro's support for and integration with the IBM Rational Unified Process® — or RUP® — ensures that your requirements management process and automation follows industry-proven best practices.

And because IBM Rational RequisitePro integrates with other leading Rational tools from IBM Software Groups, we deliver them better and faster than anyone else. At every release of Rational RequisitePro, you are assured that the integrations work right out of the box, unlike integrations that involve multiple vendor solutions where release compatibility may result in time wasted maintaining integrations.

Unify the Team with IBM Rational Suite

As a team-based tool, IBM Rational RequisitePro is part of the supporting foundation — the IBM Rational Suite® Team Unifying Platform — in all IBM Rational Suite solutions. Designed to unify cross-functional teams, optimize practitioner productivity, and simplify adoption, Rational Suite solutions are available in the following editions:

- *IBM Rational Suite AnalystStudio*
- *IBM Rational Suite DevelopmentStudio*
- *IBM Rational Suite ContentStudio*
- *IBM Rational Suite TestStudio*
- *IBM Rational Suite Enterprise*

**Accelerate Success with
IBM Rational Services**

Bring your projects in on time and under budget. Available where and when needed, IBM Rational Services improve self-sufficiency as they build a foundation for continuous software development improvement. The IBM Rational Developer NetworkSM helps you learn and use IBM Rational software development tools and

methodologies through online access to training, articles, white papers, documentation, scripts, discussion forums, and more.

IBM Rational University courses span the software lifecycle. More than 60 courses are available over the Web, on-site, or at dozens of classrooms worldwide. Courses specific to Requirements Management include:

- *Requirements with Use cases*
- *Fundamentals of IBM Rational RequisitePro*

Expert consulting and mentoring services provide accelerated knowledge transfer. Packaged services including Assessments, QuickStarts, and Deployment Services, offer proven pathways to efficient technology adoption. Technical support via telephone, email, or fax ensures fast resolution of issues.



SPECIFICATIONS

IBM Rational RequisitePro

- *Processor: 500 MHz or greater; 128 MB RAM recommended*
- *Disk Space: 96 MB*
- *Operating System: Microsoft Windows NT 4.0, 2000 or XP*
- *Word Processor: Microsoft Word 2000 or 2002*
- *Database: Microsoft SQL Server 7.0, 2000 Oracle 8 or 9i r2 (creates Microsoft Access databases by default)*

IBM Rational RequisiteWeb

- *Browser: Microsoft Internet Explorer 5 or 6; Netscape, Navigator 4 or 6*
- *HTML Converter: Microsoft Word 2000 or 2002*

Windows Server

- *Processor: 500 MHz or greater; 128 MB RAM minimum*
- *Disk Space: 30 MB*
- *Operating System: Microsoft Windows NT Server 4.0; or Microsoft Windows 2000 Advanced Server*

© Copyright IBM Corporation 2003

IBM Corporation
Software Group
Route 100
Somers, NY 10589
U.S.A.

Printed in the United States of America
01-03
All Rights Reserved

IBM is a trademark of International Business Machines Corporation in the United States, other countries, or both. Rational, the Rational logo, ClearQuest, ClearCase, ClearCase MultiSite, Rational Suite, AnalystStudio, ContentStudio, Rational Suite, TestStudio, and Rational Developer Network are trademarks or registered trademarks of Rational Software Corporation in the United States and/or other countries. Microsoft, Microsoft Windows 98, NT, 2000 and Microsoft Project 2000 are trademarks or registered trademarks of Microsoft Corporation. All other names are used for identification purposes only and are trademarks or registered trademarks of their respective companies. ALL RIGHTS RESERVED. Made in the U.S.A.

Other company, product or service names may be trademarks or service marks of others.

*Rational ClearQuest integrates with Crystal Reports Professional Edition for advanced reporting capabilities.

The Rational Software home page on the Internet can be found at **ibm.com/rational**

The IBM home page on the Internet can be found at **ibm.com**

♻️ Printed in the United States on recycled paper containing 10% recovered post-consumer fiber.