

IBM® Rational® XDE™ Modeler

Highlights

- ***Model-driven development with UML 1.4 support***
- ***Multi-model support enables Model-Driven Architecture (MDA)***
- ***Runs either stand-alone or integrated with IBM WebSphere or Microsoft Visual Studio .NET***
- ***Allows architectures to be leveraged on either .NET or Java platforms***
- ***Create platform-neutral models and diagrams at any level of abstraction***
- ***User definable patterns to create, customize, and leverage architectural design patterns***
- ***Cross-model references and versioning up to the class and diagram level allow structuring to fit any project***
- ***Maintain tight integration between analysis models and implementation models***
- ***Free-form modeling***
- ***Web publishing and reporting***

IBM Rational XDE Modeler enables architects and designers to practice model-driven development with the Unified Modeling Language (UML). Such users can produce platform-independent models of software architecture, business needs, reusable assets, and management-level communication. Industry standard UML support and a powerful pattern engine allow users to create a semantically rich application architecture that meets business needs and is readily understood by the development team.

Realize your architecture with models and patterns

Architects and designers can use Rational XDE Modeler's multi-model support to apply the Model-Driven Architecture (MDA) paradigm. Developers can use architectural models and patterns as the basis for implementation, thereby accelerating the development of applications to conform to their architecture. Further, features such as free-form modeling, web publishing and reporting allow users to share architecture and designs with all stakeholders, whether or not the stakeholders use Rational XDE.

Rational XDE Modeler includes advanced patterns features that allow the architect to control designs and

implementations through automated transformations of analysis models. This automation also allows you and your architecture to be more effective because it is consistent and repeatable.

Architects start off by using a model template to provide structure for their project. They can take industry-standard patterns, or harvest some of their own, quickly and easily. Rational XDE Modeler's built-in patterns engine allows you to create patterns from existing models and shape the pattern so it can be applied anywhere. Automating patterns enables architects to jump start development, fully utilize their creative capabilities, avoid repetitive, tedious tasks, and design their own patterns.

Ensure architectural integrity over time

Using Rational XDE Modeler, the architect gains visibility into the impact of change on designs. Not only can they see the changes and evolution of designs, but also the impact of pending changes.

In addition, architects can also quickly comprehend, on a scope that would be difficult without Rational XDE Modeler, the "global" impact of proposed architectural enhancements, future versions and/or revisions.

Make developing on a team easier

IBM Rational XDE Modeler allows users to create models and diagrams at any level of abstraction, from free-form diagrams for management consumption to detailed design models for translation into code.

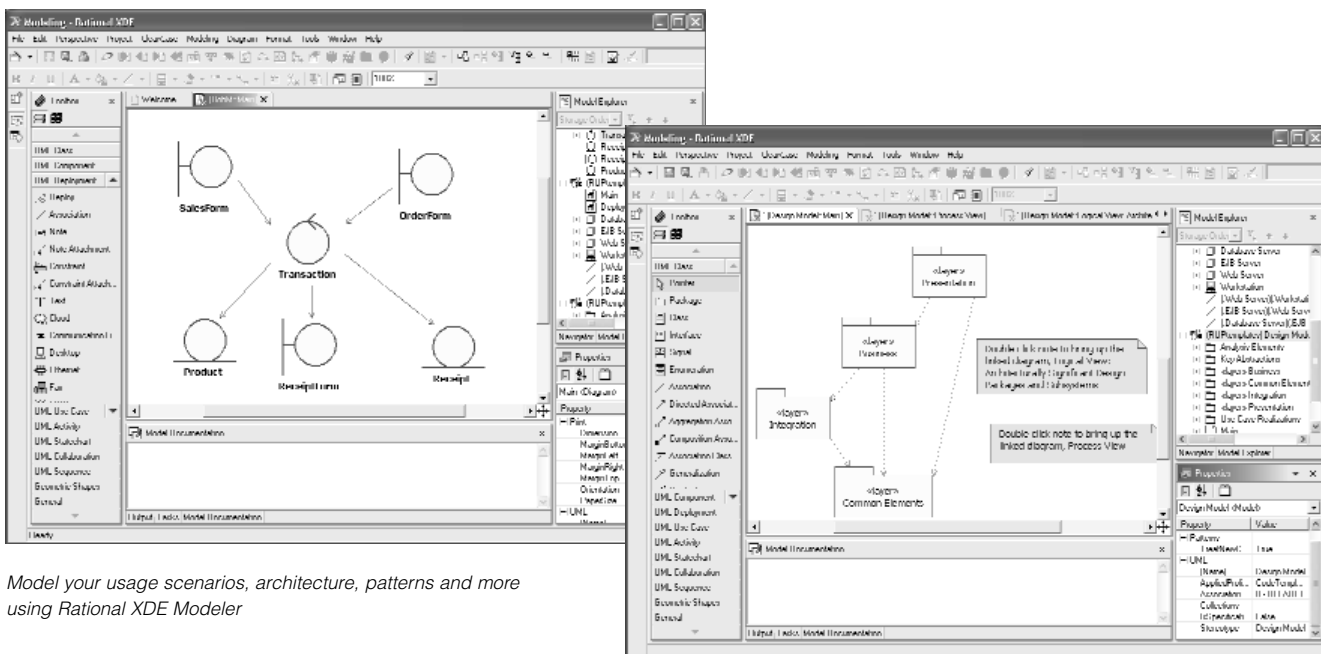
Rational XDE Modeler integrates with IBM Rational® RequisitePro® for viewing and managing ever-changing requirements. It provides web publishing and other reporting features to communicate your design to others inside or external to the project. It also integrates with IBM Rational® ClearCase® to give you version control features right inside your IDE.

The IBM Rational Unified Process® (RUP®) offers best practices and a configurable process framework for guiding your development activities. This includes a special RUP Configuration for Java and .NET developers, and a special plug-in for Extreme Programming (XP) that offers lightweight best practices designed specifically for this development practice.

And so you'll never have to go it alone, the Rational Developer Network™ (RDN) serves as your online extended development community. The RDN provides reusable patterns and assets, white papers, discussion

forums, and a wealth other technical resources made accessible through a special online customer website. It also includes a set of Rational Development Accelerators where a variety of reusable assets help further speed up your development and provides convenient web-based training so that you need not leave your work environment. With the RDN, you'll never have to start a project from a blank slate again.

No one better equips you with tools, community, and best practices for team development. Rational XDE Modeler will make your vision a reality.



Model your usage scenarios, architecture, patterns and more using Rational XDE Modeler

Feature Summary for the Rational XDE Product Family

	Rational XDE Modeler Edition	Rational XDE Developer .NET Edition	Rational XDE Developer Java Platform Edition	Rational XDE Developer Plus Edition
IDE Support				
IBM WebSphere Studio	✓		✓	✓
Eclipse 2.0 (included with Rational XDE)	✓		✓	✓
Microsoft VisualStudio .NET	✓	✓		✓
UML & Modeling Support				
UML 1.4 Support	✓	✓	✓	✓
Free-Form Modeling	✓	✓	✓	✓
Pattern Engine	✓	✓	✓	✓
Data Modeling		✓	✓	✓
GOF patterns		✓	✓	✓
Language & Implementation Support				
Java Round-Trip Engineering (RTE)		✓	✓	
JDK 1.4 support			✓	✓
J2EE Deployment Diagrams			✓	✓
J2EE App Server support for IBM WebSphere, BEA WebLogic and Oracle			✓	✓
C# RTE		✓		✓
VB .NET RTE		✓		✓
ASP .NET RTE		✓		✓
Assisted Modeling		✓	✓	✓
Code Templates	✓	✓	✓	✓
Multi-Model				
Multi-Model Support	✓	✓	✓	✓
Model Integrator	✓	✓	✓	✓
Publishing/Reporting				
Web Publisher	✓	✓	✓	✓
Generate User Definable Reports	✓	✓	✓	✓
Print Diagrams	✓	✓	✓	✓
Developer Testing				
Runtime Analysis with PurifyPlus				✓
Visual Trace				✓
General				
Import Rose Models	✓	✓	✓	✓
Reusable Asset Specification (RAS)	✓	✓	✓	✓
Rational XDE Extensibility Interface (RXE)		✓	✓	✓
Integrations with Other Rational Products				
ClearCase Integration	✓	✓	✓	✓
RequisitePro Integration	✓	✓	✓	✓
SoDA Integration	✓	✓	✓	✓
RUP Java Configuration For Developers	✓		✓	✓
RUP .NET Configuration For Developers	✓	✓		✓



For more information, please go to <http://www.rational.com/xde> to learn more, view online demonstrations, and download/order a Solution CD that includes an evaluation version of Rational XDE.

SPECIFICATIONS

Hardware and Software Requirements

Operating System

- *Windows NT 4.0 Workstation, Service Pack 6a*
- *Windows 2000 Professional, Service Pack 2 or Service Pack 3 (Recommend: Service Pack 2)*
- *Windows 2000 Server and Advanced Server, Service Pack 2*
- *Windows XP Professional*

Supported IDEs

- *Eclipse Java platform IDE*
- *IBM Websphere Studio Application Developer 5.0*
- *IBM Websphere Studio Application Developer Integration Edition 5.0*
- *Microsoft Visual Studio .NET 7.1*

Processor

- *450 MHz PII*
- *Recommend: 700 MHz*

Available RAM

- *256 MB minimum*
- *Recommend: 512 MB*

Available Disk Space

- *400 MB installation directory*
- *50 MB workspace*
- *Recommend: 2-4 GB*

Configuration Management

Supports ClearCase 4.2, ClearCase 2002.05.00, ClearCase LT 2001A.04.00, ClearCase LT 2002.05.00. Microsoft Visual SourceSafe 6.0c. Supports the SCC interface.

© Copyright IBM Corporation 2003

IBM Corporation
Software Group
Route 100
Somers, NY 10589
U.S.A.

Printed in the United States of America
01-03
All Rights Reserved

IBM and the IBM logo are trademarks of International Business Machines Corporation in the United States, other countries, or both. Rational, XDE, ClearCase, RUP, Rational Unified Process, Rational Developer Network, and RequisitePro are trademarks or registered trademarks of Rational Software Corporation in the United States, other countries, or both.

Microsoft and Windows NT are registered trademarks of Microsoft Corporation in the United States, other countries, or both.

Java and all Java-based trademarks are trademarks of Sun Microsystems, Inc. in the United States, other countries, or both.

UNIX is a trademark of The Open Group in the United States, other countries or both.

Other company, product or service names may be trademarks or service marks of others.

The Rational Software home page on the Internet can be found at **ibm.com/rational**

The IBM home page on the Internet can be found at **ibm.com**

♻️ Printed in the United States on recycled paper containing 10% recovered post-consumer fiber.