



## IBM Rational Performance Tester Extension for SAP solutions

---

### Highlights

---

- ***Helps improve quality through predeployment scalability testing that mimics the true end-user experience, while new recorder technology helps ensure accurate recognition of SAP application transactions***
- ***Helps reduce the time and cost required to develop system scalability tests with reusable test scenarios and flexible emulations of diverse user populations***
- ***Features an easy-to-use, wizard-based test recorder and editor optimized for SAP solution testing, plus an industry standard Java™ scripting language for advanced debugging and test extensions***
- ***Includes performance analysis reports tailored for SAP scalability tests and real-time reporting for performance problem identification***
- ***Seamlessly incorporates SAP solution-specific menu and test configuration elements, allowing test data variation and enabling insertion of custom Java code***

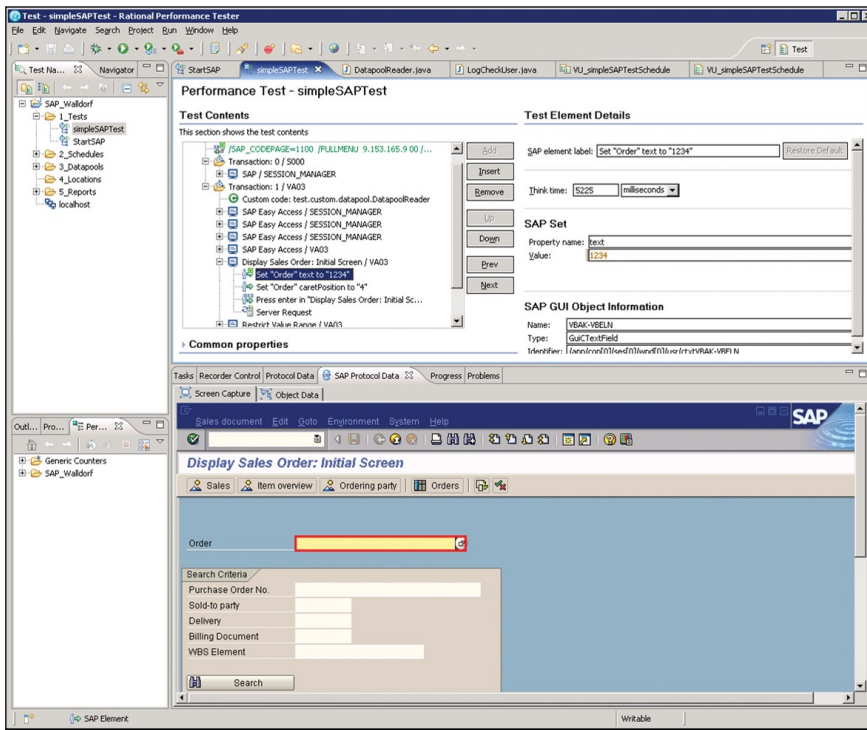
IBM Rational® Performance Tester Extension *for SAP solutions* software extends the performance and scalability testing capabilities of IBM Rational Performance Tester software to SAP GUI-based solutions. It helps organizations maximize the performance and scalability of business-critical enterprise software through rigorous load testing.

IBM Rational Performance Tester Extension *for SAP solutions* software adds SAP GUI support to the IBM Rational Performance Tester platform. It allows you to create, execute and analyze performance tests to validate the scalability and reliability of your SAP landscape. With IBM Rational Performance Tester software, organizations can better support the implementation of high-performing business processes and can execute, upgrade or modify existing processes on time and within budget.

SAP customizations rely on two fundamental elements—functionality and performance. Functionality is what the SAP application lets its users accomplish, while performance is the system's ability to complete transactions and furnish information rapidly and accurately.

IBM Rational Performance Tester Extension *for SAP solutions* enables organizations to test processes before they go live.

Using predeployment performance testing, you can prevent application failure due to performance-related problems. Rational Performance Tester Extension *for SAP solutions* combines an easy-to-use test recorder with advanced scheduling, real-time reporting, automated data variation and a highly scalable execution engine to help ensure that your SAP applications are prepared to handle large user loads.



Testing an SAP business process with IBM Rational Performance Tester Extension for SAP solutions software

### Providing guidance throughout the entire testing process

Let's say your development team is preparing to launch a new business process in a service-oriented architecture (SOA) environment with SAP applications. You can use Rational Performance Tester Extension for SAP solutions to validate and test the performance of the SAP application that supports the process. Using Rational Performance Tester Extension for SAP solutions software, you can validate and test the behavior of a business process implementation, as well as test a complete SOA environ-

ment including portals, Web services and SAP GUI-based applications. A performance test often includes the following five steps:

- **Define the business process.** This step involves determining the optimal hardware and software platform for your business processes and setting up the Rational Performance Tester environment.
- **Develop and record the test script.** This step walks the software through the actual screens and entries that will be used by the business process, resulting in a test that exposes underlying details, including screen shots of the recorded transaction.

- **Expand the user load and vary data.** This step simulates peak loading requirements for the application or process, and identifies dynamic server responses. Test scripts, which include varied input data, can be grouped together in various combinations to reflect the multiple types of users comprising the projected user population.
- **Review and evaluate test results.** This step includes measuring simulated performance against the key performance indicators for the process such as page throughput, server health and response time per transaction. Test execution is accompanied by easy-to-read, real-time reports that are updated throughout the test run and that include metrics on any bottlenecks.
- **Retest for validation.** This step includes rerunning the prerecorded tests using the modified environment to validate the effectiveness of the changes.

### Lowering the cost of performance testing

IBM Rational Performance Tester generates a low processor and memory footprint when emulating multiple users. As a result, high levels of scalability can be achieved even if the team does not have access to excessive computing power. In addition, the application features automated data correlation and manipulation, code-free tests and an intuitive user interface, which help reduce the learning curve and minimize the amount of training needed to make your team productive.

## Seamlessly integrated with the IBM

### Rational Software Delivery Platform

IBM Rational Performance Tester is an integral component of the IBM Rational Software Delivery Platform—a complete and powerful solution for software system creation and application lifecycle management. Providing automation support for all aspects of software development, the platform unites team members by enabling them to share information effectively with one another and with others' tools. Integration into

the Rational Software Delivery Platform is designed to ensure access to various software development lifecycle assets, such as application requirements, and it enables a shared user experience across team disciplines. From the perspective of performance testing, this allows developers and testers to build, share and analyze performance tests from within the same user interface they use to construct, test, deploy and monitor their applications using other tools within the Rational Software Delivery Platform.

### IBM Rational services

IBM offers a variety of services to complement IBM Rational tools and best practices. Rational services are available for large and small projects to help you build team skills, reduce time to productivity when implementing a new solution, and maximize the return on your investment in IBM Rational tools. The IBM Rational worldwide staff of professional services consultants brings years of experience to help you lay a solid foundation for successful software development projects.

#### IBM Rational Performance Tester Extension *for SAP solutions* specifications

##### Supported SAP GUI versions \*

SAP GUI V6.20, patch level 54+

SAP GUI V6.40, patch level 13+

##### Supported platforms

Microsoft® Windows® XP SP1 and SP2

Microsoft Windows Server 2003

Microsoft Windows Server 2000 SP3 and SP4 (execution only)

---

\* All Web-based SAP solutions can be tested using Rational Performance Tester native HTML test functionality.



### For more information

To learn more about IBM Rational Performance Tester Extension *for SAP solutions* software, please contact your IBM representative, or visit:

[ibm.com/software/awdtools/tester/performance/ext/sap](http://ibm.com/software/awdtools/tester/performance/ext/sap)

© Copyright IBM Corporation 2007

IBM Corporation  
Software Group  
Route 100  
Somers, NY 10589  
U.S.A.

Produced in the United States of America  
09-07  
All Rights Reserved.

IBM, the IBM logo and Rational are trademarks or registered trademarks of International Business Machines Corporation in the United States, other countries or both.

Java and all Java-based trademarks are trademarks of Sun Microsystems, Inc. in the United States, other countries, or both.

Microsoft and Windows are trademarks of Microsoft Corporation in the United States, other countries or both.

Other company, product and service names may be trademarks or registered trademarks or service marks of others.

The information contained in this documentation is provided for informational purposes only. While efforts were made to verify the completeness and accuracy of the information contained in this documentation, it is provided "as is" without warranty of any kind, express or implied. In addition, this information is based on IBM's current product plans and strategy, which are subject to change by IBM without notice. IBM shall not be responsible for any damages arising out of the use of, or otherwise related to, this documentation or any other documentation. Nothing contained in this documentation is intended to, nor shall have the effect of, creating any warranties or representations from IBM (or its suppliers or licensors), or altering the terms and conditions of the applicable license agreement governing the use of IBM software.