

Test Smarter, Finish Faster

# Rational preVue-ASCII

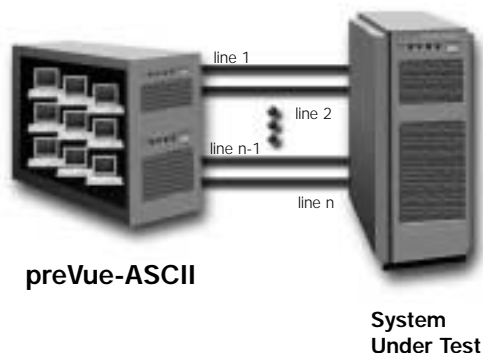
## Automated Quality and Performance Testing

Rational preVue-ASCII is a remote terminal emulator (RTE) that replicates users running applications on a system under test (SUT). preVue-ASCII automates multi-user testing of your applications by replacing both users and physical devices with software scripts that deliver an accurate workload of user activity. It cost-effectively measures the quality and performance of your applications under large user loads.

## Automatic Test Script Creation

Rational preVue-ASCII automatically creates test scripts that emulate the activities of real users. A keystroke capture utility records user inputs and application responses. An automated test script generator uses this recorded data to create easy-to-read and easy-to-edit test scripts. Special features of the script generation process include:

- Key mapping function – automatically maps a sequence of keystrokes into a single keystroke allowing proper emulation of function keys and 16-bit international character sets.
- Preservation of typing rates and user think time delays – provides accurate playback of a previously recorded user session.



preVue-ASCII with RS-232 Connectivity

The VU language combines the capabilities of a standard high-level programming language with extensions specific to test design:

- global events
- shared variables
- user think time distribution algorithms
- arithmetic and assignment variables
- conditional execution structures
- looping structures
- break and continue statements
- user-defined subroutines
- file inclusion and macro definition
- arrays
- external C linkage
- automatic memory allocation/deallocation
- pattern matching
- random number generation
- reading and printing data

## Realistic Testing

Rational preVue-ASCII provides a multi-user run-time utility that schedules tasks to be emulated during the test run. The Workload Description File (WDF) provides a central point for defining the attributes of the test suite to be executed. You can change the test suite by merely changing the WDF. A single graphical menu makes it easy to change parameters, such as the number of users to emulate, from one test run to the next.

Monitoring and control of the test execution is provided by Rational preVue-ASCII's Survey utility. Survey provides a full-screen summary of all user activity and allows interactive control of the test run. You can suspend/restart individual users and dynamically update shared variables. You can also view the test script as it executes for any user.

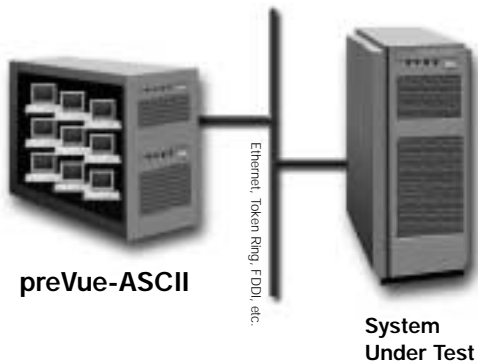
## HIGHLIGHTS

Uncover quality and performance problems with new software releases before your users see them

Determine how your applications perform with new system hardware or software upgrades

Verify the quality of applications following code changes

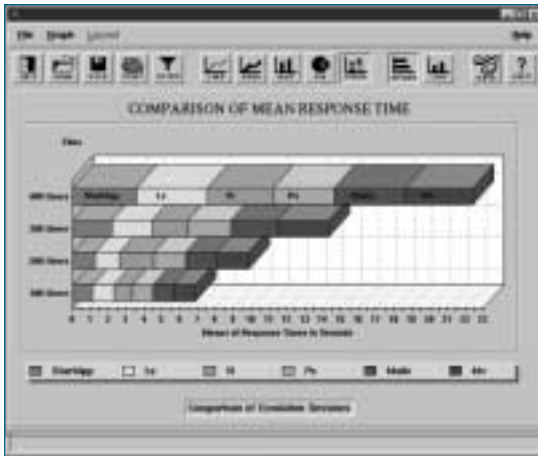
Test the capacity of your current system as the number of users increases



*preVue-ASCII with Network Connectivity*

Further monitoring of test execution is provided by Rational preVue-ASCII's Softscreen capability, which allows you to view any user's screen during the run. You can see either an entire history of the activity that occurred during the run or the current activity for the selected user.

Rational preVue-ASCII provides multiple monitoring methods that put you in control of your test runs.



*preVue-ASCII's interactive graphing turns data into insight*

## Insightful Analysis of Test Results

Rational preVue-ASCII provides a comprehensive set of reports, graphs, and log files to allow you to turn test results into insight. Presentation-quality performance graphs allow you to analyze individual test run results and compare results across multiple test runs. Statistical analysis of response time measurements is automatically performed by Rational preVue-ASCII and summarized in easy-to-understand reports. Detailed log files allow you to analyze actual data sent and received when performance or quality problems are uncovered.

Data can also be exported to third party processing and spreadsheet programs for analyzing test results or creating presentations.

## System Independent Testing

Rational preVue-ASCII creates no CPU, memory, or disk overhead on the SUT. It provides completely non-intrusive testing for accurate performance measurement. This "black box" approach also means that testing with preVue-ASCII is independent of the SUT operating system. preVue-ASCII can apply user loads to any UNIX, MS Windows NT, MVS, VMS, or other system. It also works with any screen-based application and is independent of the application's development environment or database environment.

## Powerful Scripting Language

Test scripts are created in VU, a flexible C-like scripting language specifically designed for performance and quality testing. VU provides comprehensive programming capabilities along with advanced features required for automated testing, such as send/receive commands, shared variables for synchronization, and run-time control of multi-user activity. VU test scripts are fully editable and customizable.

### Rational Software

Dual Headquarters

18880 Homestead Road  
Cupertino, CA 95014

20 Maguire Road  
Lexington, MA 02421

Toll-free: (800) 728-1212  
e-mail: [info@rational.com](mailto:info@rational.com)  
Web: [www.rational.com](http://www.rational.com)

International Locations:  
[www.rational.com/worldwide](http://www.rational.com/worldwide)