



## IBM Rational RequisitePro

---

### Highlights

---

- *Offers advanced Microsoft Word integration*
- *Built on a robust database infrastructure*
- *Features customizable, filterable requirement attributes*
- *Provides in-depth traceability and coverage analysis*
- *Facilitates detailed change-impact analysis with audit trails and e-mail notification*
- *Helps you create and compare project baselines*
- *Provides a scalable and fast Web interface for distributed teams*
- *Offers flexible reporting options*
- *Includes configurable import capabilities*
- *Integrates with multiple tools in the IBM Rational Software Delivery Platform*
- *Features user-definable requirement types*
- *Contains configurable project and document templates*

### Successful requirements management

The IBM Rational® team has been helping customers over the course of more than 20 years to successfully build and deploy software applications. Time and again during these engagements, requirements management was exposed as a key process area for ensuring project success. The better you communicate and manage your requirements, the better chance your projects have for delivering the right solution on time and within budget—and effective requirements management is the specialty of the IBM Rational RequisitePro® solution.

## Capturing and communicating requirements

In any effective requirements management process, recording the requirements that have been discovered during elicitation is a key step. This helps ensure accurate communication and management of the requirements as they evolve. Documents are a natural format for recording requirements, because they freely provide space for establishing context or for offering supplementary requirements information.

The IBM Rational RequisitePro solution leverages users' licensed copies of the familiar Microsoft® Word tool to ease requirements capture. Documents, though useful for requirements capture, are not an optimal environment for prioritizing and organizing information—activities that are best performed using a separately licensed, supported database. By linking requirement documents to a database, the Rational RequisitePro product marries the best of both worlds.

This unique architecture leverages the power of a database and the freedom of the Microsoft Word application for more effective requirements management. Documents in IBM Rational RequisitePro format are not simply input to or output from a requirements database. They contain live requirements, allowing you to remain in a familiar Microsoft Word environment to modify requirements. The requirements in Word documents



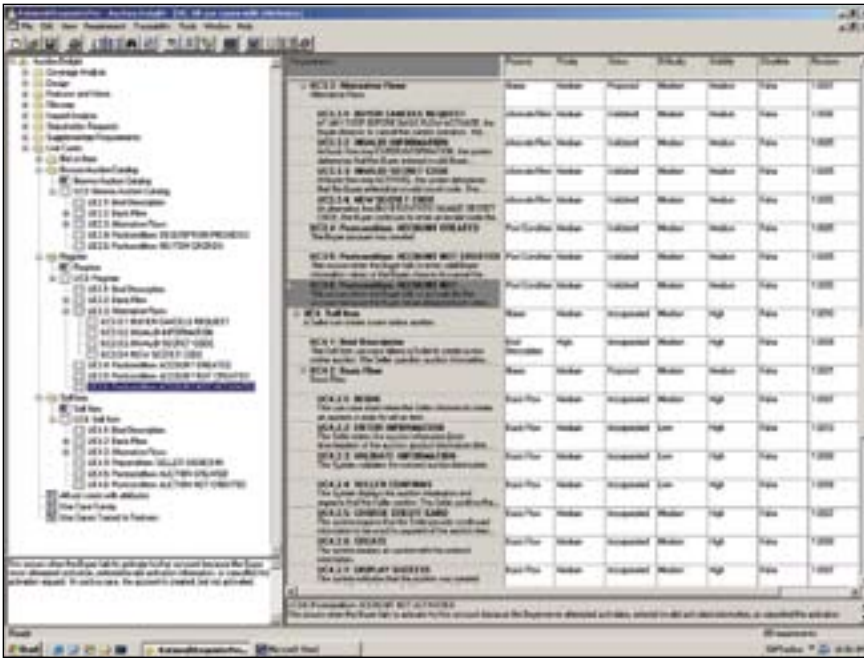
Requirement documents are a familiar capture and communication mechanism, providing context and order. Dynamically linking requirements in documents to a database provides another powerful dimension for organizing and tracking the information.\*

are dynamically linked to additional requirements information stored in a database. The database and documents are connected such that a simple double-click on the requirement will launch users' Microsoft Word application and take them directly to that requirement in the context of how it was written in the document.

The Rational RequisitePro solution supports a choice of nonproprietary, industry standard databases (IBM DB2®, Oracle, Microsoft SQL Server, Microsoft Access) with which you can easily organize requirements information in packages (folders) using a structure that best suits your needs. From views into the database, you can prioritize, link requirements and track changes.

Assigning attributes such as priority, difficulty and status helps you manage your requirements in a way that is impossible using documents alone. The Rational RequisitePro product provides standard attributes out of the box, while also being easily customizable to support your project's processes and terminology.

While some organizations like to use the Microsoft Word application to capture requirements, others do not. Using the integration is strictly optional. Entering requirements directly in the Rational RequisitePro tool is easy to do, giving you the option of database or document centrality—your choice.

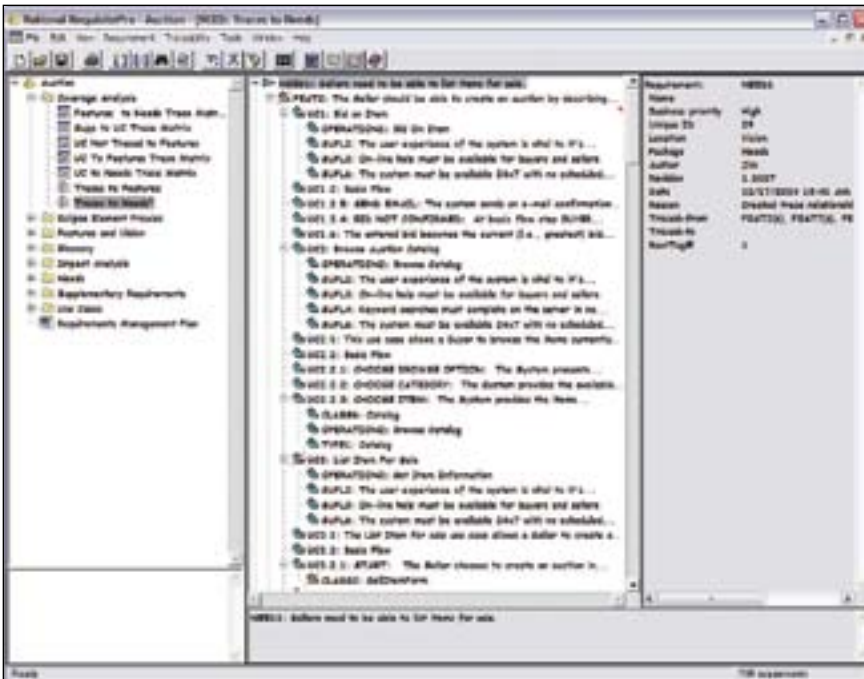


The powerful interface allows you to organize requirements information in packages (folders) using a structure that best suits your needs, providing quick access to requirements information.

### Understand the impact of change

Change is inevitable. But change is not the enemy—it indicates responsiveness to stakeholder needs. Unmanaged change, on the other hand, sends many projects spiraling off course. The IBM Rational RequisitePro solution provides functionality to help you understand the impact of change as it occurs so you can better manage its effect on the project.

These features allow you to link related requirements, so that as change occurs to one requirement, you can easily see its impact on other related requirements. Having real-time visibility to change lets you view its effect across the project and assess coverage for verification and validation. With the ability to perform impact analysis, you can make quick, informed decisions for scope management or resource reallocation. And as requirements evolve, each modification made is captured, tracked and fully documented by the Rational RequisitePro product. Requirement audit trails document the who, what, why and when details of requirement modifications. And e-mails can be automatically delivered to notify predefined stakeholders of changes that may affect their work prioritization. By understanding the impact of change, you are much better equipped to control changes that affect your project.



Understanding traceability is easy with the tree view. Requirement relationships are shown in a familiar expandable and collapsible way, while details for the highlighted requirement are shown at right.

Parallel construction and maintenance of multiple application versions have their own impact on change as well. Each release of an application possesses a unique set of requirements that builds upon those of prior releases—a natural result of the maturity arising from customer feedback and marketplace growth. To keep track of changes in requirements across these multiple releases, the Rational RequisitePro solution facilitates the creation and comparison of requirement baselines. A baseline is a logically grouped set of requirements for a particular version of an application. The Rational RequisitePro product can construct these baselines and perform comparisons between them, exposing differences at the project, document or requirements level in a Web-accessible report. Project baselines can also jump-start the creation of new releases, helping to ensure efficient transfer of historical data.

### Requirements management via the Web

Through the IBM Rational RequisitePro Web interface, remote team members can create, view and modify requirements and requirement documents. Administrators can manage projects via the Web. Requirements traceability can also be managed via the Web using a traceability matrix or a traceability tree, which visually depicts relationships between requirements.

The Web interface permits requirements creation and editing capabilities, reducing the need to install thick-client interfaces on the desktops of remote team members.

### Integrate requirements across the software lifecycle

The better informed each project team member is of the requirements, whether located remotely or locally, the more accurately team members

ID	Description	Priority	Status	Difficulty	Stability
REAT1	Action site users (the Sellers and Buyers) should be able to create accounts with the system and update account information if it is incorrect or if it changes.	Low	Proposed	Medium	High
CEAT2	The Seller should be able to create an auction by describing an item or service s/he wants to sell and defining the initial/starting price and the bid increment. The seller should be able to include pictures of the items being offered.	Medium	Approved	Low	High
REAT3	The system should provide a wide range of categories in which to buy or sell items.	Medium	Approved	Low	High
CEAT4	Any user should be able to browse a catalog of open auctions, read auctioned item or service descriptions, and see bid history.	Medium	Approved	Low	High
REAT5	A registered Buyer should be able to place bids on auctioned items.	Medium	Approved	Low	High
REAT6	Buyers should be able to compare similar items for sale.	Medium	Approved	Low	Medium
REAT7	The Seller should be able to reject bids (for whatever reason that may be) or accept a winning bid.	Medium	Incorporated	High	Low
REAT8	When the Seller accepts a bid, the status of the auction should change from open to closed and an exchange transaction should commence.	Medium	Incorporated	High	Medium
CEAT9	The Auction Administrator should be able to close auctions without accepting any bids (for example due to unpaid seller fees), initiate time-triggered auction closings, remove bids from selected Buyers (for example for violating rules of conduct, ending auctions, etc).	Medium	Incorporated	High	High

IBM Rational RequisitePro software comes with a Web interface, making requirements accessible to all team members, especially in remote locations or multiplatform environments. Access, query, modify and create requirements and requirements documents, and manage traceability through the RequisitePro Web interface.

can deliver a solution that satisfies project or business goals. Integrating requirements with other lifecycle artifacts and processes helps ensure clear communication and saves time-consuming rework.

And through powerful integrations with other tools in the IBM Rational Software Delivery Platform, the IBM Rational RequisitePro solution helps you integrate requirements across the lifecycle, optimizing team collaboration around the requirements. The following sections detail how.

### **Requirements access for business analysts**

Often, the first step to improving a business is to create and publish a business model to help ensure that the business processes, organization and resources are well understood. This model can also provide a jump-start on the requirements discovery process. The Rational RequisitePro product enables requirements access from within the IBM WebSphere® Business Modeler solution, allowing business analysts to directly link tasks, processes and resources with requirements. This capability helps ensure that the software being developed meets the needs of the business.

### **Requirements access for architects, designers and developers**

To ensure optimal design and to minimize costly rework, developers need access to requirements from where they sit. The IBM Rational RequisitePro solution enables requirements access from within the IBM Rational Software Architect, IBM Rational Software Modeler and IBM Rational Rose® Technical Developer tools. Requirements information is presented directly in the integrated development environment (IDE) by the Rational RequisitePro solution—no need for the developer to move between products.

Through these integrations, the Rational RequisitePro solution lets developers connect requirements to use-case models, enabling instantaneous access to use-case specifications from use-case diagrams as well as visibility into requirements information. This functionality can help ensure developers implement the functionality that truly reflects customer needs, as they evolve.

In addition, the integration capability between the Rational RequisitePro, Rational Software Architect and Rational Software Modeler solutions can enable you to connect design elements to requirements. By linking design elements with requirements, you can easily review and assess the impact of requirements changes on design elements and keep developers informed of changes that may impact their work.

### **Requirements access for testers**

Without access to the latest requirements, how can testers be assured they have prioritized their work appropriately? The integration with the IBM Rational TestManager and IBM Rational ClearQuest® products helps ensure that requirements serve as a direct input to test-case creation so that testers and quality assurance (QA) engineers can validate their applications with confidence. And as changes to requirements occur, testers can run reports that highlight which test cases are impacted by the change, helping to ensure their test cases are properly updated to reflect the latest requirements.

## **Integral part of the IBM Rational Software**

### **Delivery Platform**

The IBM Rational RequisitePro product is also an integral component of the IBM Rational Software Delivery Platform. The Rational platform is a complete, powerful, industry-leading solution for software system creation and application lifecycle management. It provides automation support for essentially all aspects of software development. Further, it unites team members by enabling them to share tools and information effectively with one another.

### **Support for RUP**

The IBM Rational RequisitePro solution supports the IBM Rational Unified Process®—or IBM RUP®—methodology, helping to ensure that your requirements management process and automation follow industry-proven best practices.

### **Requirements access for the team**

As a team-based tool, the IBM Rational RequisitePro solution is part of the IBM Rational Team Unifying Platform™ package. Designed to unify cross-functional teams, optimize practitioner productivity and simplify adoption, these integrated solutions provide your team with a shared platform for development success.

## **IBM Rational services**

A variety of service offerings are available to complement IBM Rational tools and best practices to help you build the capabilities you need in a combination that's right for your business. IBM services are designed to help you build team skills, to reduce the time to productivity when implementing a new solution, and to maximize the return on your investment in IBM Rational tools.

- *IBM developerWorks®:Rational services are the technical resource for the community of development professionals using or evaluating IBM Rational tools and best practices. The developerWorks:Rational services offer a variety of downloads, resources, discussion groups and education designed to help you utilize IBM Rational solutions to your best advantage. IBM Rational software training offers a curriculum that includes courses covering all the software development capabilities. A blended curriculum of instructor-led and Web-based training provides a variety of options to suit your organization's education needs.*
- *The IBM Rational worldwide staff of professional services consultants brings years of experience to help you lay a solid foundation for*

*successful software development projects. You can engage Rational professional services on large-scale customized consulting projects that are tailored to meet your organization's unique needs, or you can engage your local account team for short-term assistance with a single challenge. Several types of packaged services are also available, including offerings that provide an objective assessment of your software development capabilities, help you deploy a new tool or methodology, or help you produce tangible assets through a facilitated workshop.*

- *IBM Rational Customer Support services help ensure that your project keeps moving forward with the help you need, when you need it. These maintenance programs offer efficient problem resolution with online access to tens of thousands of technical notes, patches and upgrades, as well as direct access to a talented team of support engineers. IBM Software Maintenance services are the standard maintenance offering, and IBM Technical Support Account Services can supplement this, according to your business requirements.*



## IBM Rational software

Rational software from IBM helps organizations automate and integrate the core business process of software development. Rational products, services and best practices power the IBM Rational Software Delivery Platform, the premier platform for teams that discover, develop and deploy software assets in business applications, embedded systems and software products. This modular and comprehensive solution enables teams to adopt a business driven development approach based on open standards, including the Eclipse open source framework. The result is differentiated business performance.

### For more information

For additional information about IBM Rational RequisitePro software, please visit the IBM developerWorks site at:

[ibm.com/developerworks/rational/products/requisitepro](http://ibm.com/developerworks/rational/products/requisitepro)

Or visit:

[ibm.com/software/awdtools/reqpro](http://ibm.com/software/awdtools/reqpro)

## Specifications

### IBM Rational RequisitePro, Version 7.0.1

- Processor: 500MHz or greater
- Disk space: 200MB minimum
- 512MB RAM recommended

#### Operating systems

- Microsoft Windows® 2000 Professional, Server, Advanced Server SP4
- Microsoft Windows 2003 Server x64 and Windows XP Professional (must be running in 32-bit mode on 64-bit processors)
- Microsoft Windows XP Professional SP1, SP2
- Microsoft Windows Vista Enterprise, Ultimate and Business editions
- Microsoft Windows 2003 Server, Enterprise Server Initial, SP1, SP2

#### Databases supported

- IBM DB2 V8.1, V8.2, V9.1
- Oracle 9.2, 10
- IBM DB2 Universal Database™ Components for Rational Products V8.1, V8.2, V9.1
- Microsoft SQL Server 2005; 2000 SP2, SP3 or SP4; V7 SP4
- IBM DB2 Express V8.1, V8.2, V9.1
- Microsoft Access (built in and created by default) 2000, 2002, 2003
- IBM DB2 Express-C V8.1, V8.2, V9.1

#### Word processors supported

- Microsoft Word 2000, 2002, 2003, 2007

#### Supported multihosted development environments

- Microsoft Windows Terminal Servers
  - Microsoft Windows 2000 Advanced Server, SP4
  - Microsoft Windows 2003 Enterprise Server, SP4
- Citrix MetaFrame XP, 3, 4

### IBM Rational RequisitePro Web interface, Version 7.0.1

- Processor: 500MHz or greater
- Disk space: 100MB minimum
- 1GB RAM recommended

#### Operating systems

- Microsoft Windows 2000 Server, Advanced Server SP4
- Microsoft Windows 2003 Server x64 (must be running in 32-bit mode on 64-bit processors)
- Microsoft Windows 2003 Server, Enterprise Server Initial, SP1
- Microsoft Windows Vista, Enterprise, Ultimate and Business editions

#### Databases supported

- IBM DB2 V8.1, V8.2, V9.1
- IBM DB2 Express-C V8.1, V8.2
- IBM DB2 Universal Database Components for Rational Products V8.1, V8.2, V9.1
- Oracle 9.2, 10
- IBM DB2 Express V8.1, V8.2, V9.1
- Microsoft SQL Server 2005; 2000 SP2, SP3, SP4; V7 SP4

*Note: Microsoft Access software is not supported.*

#### Browsers

- Microsoft Internet Explorer 6 SP1, 7
- Mozilla 1.6, 1.7; SP1, SP2
- Firefox 1.07, 1.5; SP1, SP2, 2.0



© Copyright IBM Corporation 2007

IBM Corporation  
Software Group  
Route 100  
Somers, NY 10589

Produced in the United States of America  
07-07

All Rights Reserved.

ClearQuest, DB2, DB2 Universal Database, developerWorks, IBM, the IBM logo, Rational, Rational Rose, Rational Unified Process, RequisitePro, RUP, Team Unifying Platform and WebSphere are trademarks or registered trademarks of International Business Machines Corporation in the United States, other countries or both.

Microsoft and Windows are trademarks or registered trademarks of Microsoft Corporation in the United States, other countries or both.

Other company, product and service names may be trademarks or service marks of others.

The information contained in this documentation is provided for informational purposes only. While efforts were made to verify the completeness and accuracy of the information contained in this documentation, it is provided "as is" without warranty of any kind, express or implied. In addition, this information is based on IBM's current product plans and strategy, which are subject to change by IBM without notice. IBM shall not be responsible for any damages arising out of the use of, or otherwise related to, this documentation or any other documentation. Nothing contained in this documentation is intended to, nor shall have the effect of, creating any warranties or representations from IBM (or its suppliers or licensors), or altering the terms and conditions of the applicable license agreement governing the use of IBM software.

\* Microsoft product screen shot reprinted with permission from Microsoft Corporation.