

## IBM Rational Suite family of products

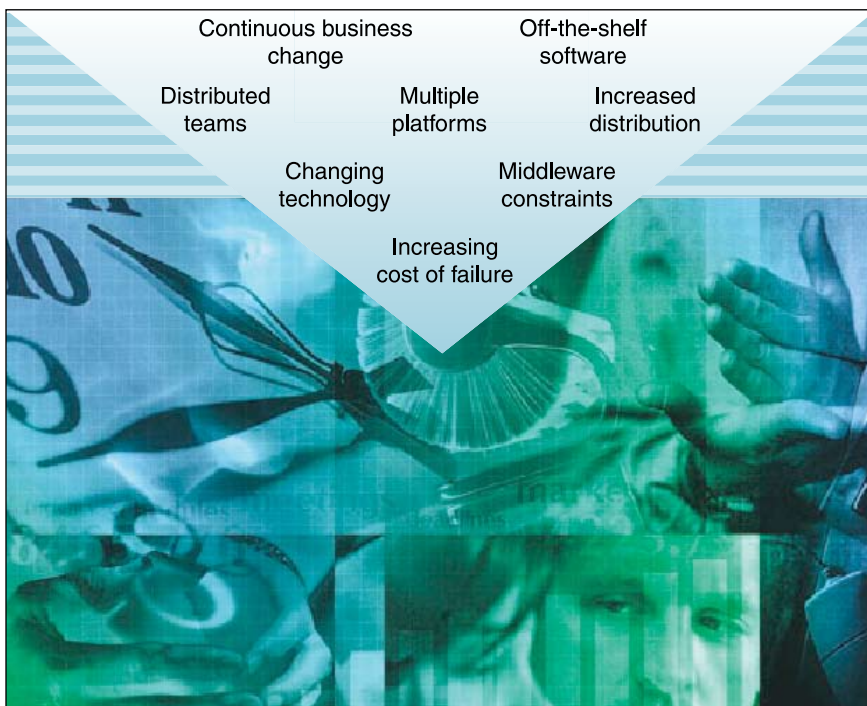
### Highlights

- **Provides a complete lifecycle solution from requirements to modeling to testing**
- **Offers solutions for enterprise, real-time, embedded and UNIX environments**
- **Unifies cross-functional teams via key product integrations and workflow**
- **Accelerates development through visual modeling, code generation and reverse-engineering capabilities**
- **Improves code quality and application performance with automated testing solutions**
- **Enhances project predictability with an iterative development process**
- **Includes a proven best practice approach to software development that is uniquely integrated with IBM Rational solutions**
- **Supports team and individual development through the IBM developerWorks online community**

In an on demand era, when customer expectations are on the rise, development cycles are getting pinched and projects are growing more complex, you need to improve your software capabilities across your organization. Individual team members need access to the best software solutions to do their jobs. And your team needs to have the latest information available so that everyone can respond quickly and appropriately to project changes and new development needs.

The IBM Rational® Suite® family of products provides a complete life-cycle set of integrated solutions. Together they empower your team to:

- *Communicate clearly and effectively.*
- *Share and reuse assets repeatedly.*
- *Improve team collaboration.*
- *Optimize individual and team productivity.*



Challenges facing software professionals today make it harder than ever to release high-quality software on time and within budget.

The Rational Suite family blends marketplace-leading developer solutions with an integrated set of lifecycle tools, called the IBM Rational Team Unifying Platform™ solution. The Team Unifying Platform solution facilitates team communication with tools for requirements management, defect and change tracking, version control, project measurement, testing, and development process guidance. With Rational Suite products you get best practices, tools and services in one comprehensive solution. This enables cross-functional teams to be unified while minimizing risk and improving overall quality. Each Rational Suite software product allows you to define requirements and model, design and build your software. Then the software helps you find and eliminate run-time errors, memory leaks and performance issues with greater efficiency.

The IBM Rational Suite family of products offers three solutions:

- ***IBM Rational Suite software*** provides a full lifecycle solution of analyst, developer and tester tools to unify cross-functional teams and support enterprise software projects from requirements to release.
- ***IBM Rational Suite Development Studio for UNIX software*** provides a full lifecycle solution of analyst, developer and tester tools to unify cross-functional teams and support UNIX® software projects from requirements to release.
- ***IBM Rational Suite for Technical Developers software*** provides a full lifecycle solution for writing very intricate code for some of the most challenging products and systems, such as real-time and embedded applications.

### **Improving team communication**

Rational Suite software unifies cross-functional teams and helps enable individuals and teams to be more productive. By providing a full complement of development tools, each carefully integrated with other components, Rational Suite software helps team members share broader project insight. No longer are individuals isolated by function. With Rational Suite software, your testers are alerted when they need to change a test script; a developer is notified when a requirement is reprioritized; and a project manager is flagged when the high-priority bug count exceeds a specified limit. This communication is the key to optimizing project productivity. Too often cross-functional teams do not communicate frequently enough—resulting in team members' working on old priorities. This lag in communication is common, and it is responsible for many hours of wasted time. Rational software's integrations tie cross-disciplinary teams together, and they alert the right people when changes are made.

## Providing a lifecycle solution

What sets the Rational Suite family apart from other solutions is the Team Unifying Platform package. A collection of integrated tools, the Team Unifying Platform offering includes two types of integrated solutions—collaborative project management capabilities and team infrastructure capabilities.

Project management solutions help teams with process guidance, project reporting and progress tracking. Rational software project management solutions include:

- **IBM Rational Method Composer** software, which ensures that everyone understands and can easily follow a practical, iterative process.
- **IBM Rational SoDA®** software, which automates the generation and maintenance of comprehensive project documentation and reports.
- **IBM Rational ProjectConsole™** software, which makes it easy for users to monitor project status and generate objective project measurement to improve project predictability.
- **IBM developerWorks®** program, which offers more than a thousand online articles, white papers and artifacts for you and your team to access 24x7 to solve problems and improve individual proficiency.



IBM Rational ProjectConsole software features a metrics dashboard to easily and consistently capture true project status from other Rational Suite solutions and third-party tools.

Infrastructure tools represent the foundational solutions necessary to communicate and collaborate throughout the development process. Rational Suite infrastructure tools include the following solutions:

- **IBM Rational RequisitePro®** software, which is a complete requirements management solution that lets your team manage ever-changing requirements.
- **IBM Rational TestManager** software, which is bundled with **IBM Rational Robot** software, consolidates test planning, execution and analysis activities, including legacy and proprietary test assets.

- **IBM Rational ClearQuest®** software, which is a defect and change tracking tool designed to help everyone understand the current state of software quality.
- **IBM Rational ClearCase® LT** software, which provides a reliable version control tool that serves as a common repository for all software development assets.

Regardless of the type of software you build, your platform or your integrated development environment (IDE), Rational Suite products have developer and testing solutions that will fit with your team's needs.

- **IBM Rational Rose® Enterprise** software is a complete, in-the-box solution with the power and flexibility to handle the needs of all modeling environments (Web development, data modeling, Java™, Microsoft® Visual Studio and C++).
- **IBM Rational Rose Developer for UNIX** software provides visual modeling support for applications running on UNIX and Linux® platforms.

- **IBM Rational Rose Technical Developer** software provides a comprehensive visual development environment for modeling, implementing and debugging the most technical software development activities, such as those that involve real-time and embedded applications.
- **IBM Rational PurifyPlus™** software is a complete set of automated run-time analysis tools for improving application reliability and performance (editions for Microsoft Windows® and UNIX operating systems).
- **IBM Rational Robot** software helps enable automated functional and regression testing of enterprise resource planning (ERP) and client-server applications, and it provides full, native support for testing all Microsoft Visual Studio .NET controls.

### **Offering an open and extensible foundation**

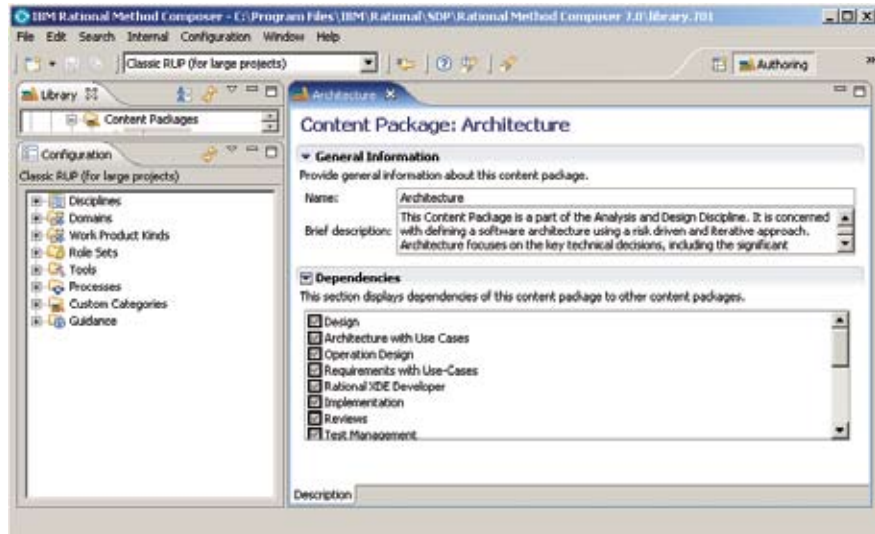
The IBM Rational Software Development Platform for software development is open, extensible and supported by more than 500 independent complementary products and services. IBM works closely with strategic partners to ensure broad compatibility with .NET, Java Platform, Enterprise Edition (Java EE), embedded system environments and emerging Web services specifications. An open application programming interface (API) helps ensure maximum flexibility.

## Accelerating success with IBM Rational services

Like all IBM Rational solutions, the IBM Rational Suite family of products is supported by an extensive, world-wide service organization. Explore more than a thousand articles, white papers and artifacts online at the IBM developerWorks Web site.

Build your team's capability through expert training, consulting services and technical support. Or take advantage of more than 75 courses designed to speed technology deployment and accelerate your project's delivery.

Available where and when needed, IBM Rational services improve your self-sufficiency as they help you build a foundation for continual software development improvement.



*The IBM Rational Method Composer platform provides the methodology and tools you need to give your team customized, practical process guidance.*

## IBM Rational Suite family of solutions

Product	IBM Rational Suite	IBM Rational Suite Development Studio for UNIX	IBM Rational Suite for Technical Developers
IBM Rational Rose Enterprise	■		■
IBM Rational Rose Developer for UNIX/Linux		■	■
IBM Rational Rose RealTime			■
IBM Rational PurifyPlus for Windows	■		■
IBM Rational PurifyPlus for UNIX/Linux		■	■
IBM Rational Robot	■		
IBM Rational Team Unifying Platform			
IBM Rational Method Composer	■	■	■
IBM Rational RequisitePro	■	■	■
IBM Rational ProjectConsole	■	■	■
IBM Rational SoDA	■		■
IBM Rational TestManager	■	■	■
IBM Rational ClearCase LT	■	■	■
IBM Rational ClearQuest	■	■	■

**Specification summary for the IBM Rational Suite family of solutions**

Feature	IBM Rational Suite	IBM Rational Suite Development Studio for UNIX	IBM Rational Suite for Technical Developers
<b>Hardware (for Windows)</b>			
600MHz Intel® Pentium® 3	■	■	■
512MB RAM	■	■	■
2.0GB free disk space on a single drive	■	■	■
CD-ROM drive	■	■	■
<b>Hardware (for UNIX)</b>			
400MHz		■	■
512MB RAM		■	■
400MB free disk space on a single drive		■	■
CD-ROM drive		■	■
<b>Operating systems</b>			
Microsoft Windows 2000 Professional, service pack 4	■	■	■
Microsoft Windows XP Professional, service pack 1 or 2	■	■	■
Microsoft Windows 2003, service pack 1	■	■	■
HP-UX 11.0 or 11.11		■	■
Sun Solaris 8 or 9		■	■



### **For more information**

To learn more about the IBM Rational Suite family of products, visit:

[ibm.com/software/awdtools/suite](http://ibm.com/software/awdtools/suite)

© Copyright IBM Corporation 2006

IBM Corporation  
Software Group  
Route 100  
Somers, NY 10589  
U.S.A.

Produced in the United States of America  
09-06  
All Rights Reserved

ClearCase, ClearQuest, developerWorks, IBM, the IBM logo, ProjectConsole, PurifyPlus, Rational, Rational Rose, Rational Suite, RequisitePro, SoDA and Team Unifying Platform are trademarks of International Business Machines Corporation in the United States, other countries or both.

Intel and Pentium are trademarks or registered trademarks of Intel Corporation or its subsidiaries in the United States and other countries.

Java and all Java-based trademarks are trademarks of Sun Microsystems, Inc. in the United States, other countries, or both.

Linux is a registered trademark of Linus Torvalds in the United States, other countries, or both.

Microsoft and Windows are trademarks of Microsoft Corporation in the United States, other countries or both.

UNIX is a registered trademark of The Open Group in the United States and other countries.

Other company, product and service names may be trademarks or service marks of others.

The information contained in this documentation is provided for informational purposes only. While efforts were made to verify the completeness and accuracy of the information contained in this documentation, it is provided "as is" without warranty of any kind, express or implied. In addition, this information is based on IBM's current product plans and strategy, which are subject to change by IBM without notice. IBM shall not be responsible for any damages arising out of the use of, or otherwise related to, this documentation or any other documentation. Nothing contained in this documentation is intended to, nor shall have the effect of, creating any warranties or representations from IBM (or its suppliers or licensors), or altering the terms and conditions of the applicable license agreement governing the use of IBM software.