

Telelogic
Logiscope - Installation Guide
Version 6.5

Before using this information, be sure to read the general information under the “Notices” section, on page 13.

This edition applies to **VERSION 6.5, TELELOGIC LOGISCOPE (product number 5724V81)** and to all subsequent releases and modifications until otherwise indicated in new editions.

© **Copyright IBM Corporation 1985, 2008**

US Government Users Restricted Rights—Use, duplication or disclosure restricted by GSA ADP Schedule Contract with IBM Corp.

Table of Contents

- About this Manual 1
- Structure of this Manual 1
 - Typographical Conventions 1
 - Related Documentation 1

- 1 Installing Telelogic Logiscope 3**
 - Before You Install 3
 - Administrator privileges required 3
 - About license keys and installation 3
 - Installing Telelogic Logiscope in Windows 3
 - Install Telelogic Logiscope in Windows 3
 - Installing Telelogic Logiscope on UNIX 4
 - Install Telelogic Logiscope on UNIX 4
 - License environment on UNIX 4
 - Set up printers and windows appearance on UNIX (optional) 4
 - Start Telelogic Logiscope 4
 - Start Telelogic Logiscope in Windows 4
 - Start Telelogic Logiscope on UNIX 4

- 2 Setting up Logiscope on UNIX 5**
 - Logiscope and MainWin 5
 - Control Panel 5
 - Starting the control panel 6
 - Setting the appearance of Logiscope windows 6
 - Setting up printers 7
 - Floating toolbars 9

- 3 Contacting IBM Rational Software Support 11**

- 4 Notices 13**

About this Manual

Structure of this Manual

This manual is divided up into the following chapters:

- Chapter 1 describes how to install Logiscope.
- Chapter 2 describes specific settings for Logiscope on UNIX.

For more details on license keys and installation, please refer to “Telelogic Lifecycle Solutions - Licensing Guide”.

Typographical Conventions

The following typographical conventions are used in this manual:

Typeface or Symbol	Meaning
Bold	Book titles, important items, and items that you can select, including buttons and menus. For example: Click Yes to continue.
<code>Courier</code>	Commands, files, and directories; computer output. For example: Edit your <code>.properties</code> file.
<code>></code>	A menu choice. For example: Select File > Open . This means select the File menu, then select the Open command from it.

Related Documentation

You will find PDF versions of these manuals on:

- The Logiscope CD
- Our support web site at [Logiscope support website](#)

1

Installing Telelogic Logiscope

- Before You Install
- Installing Telelogic Logiscope in Windows
- Installing Telelogic Logiscope on UNIX
- Start Telelogic Logiscope

Before You Install

Administrator privileges required

For a successful installation of Telelogic Logiscope, you must have access to a computer account with system administrator privileges.

About license keys and installation

Telelogic Logiscope uses FLEXnet for licensing. This means that you will need a FLEXnet license key to be able to use Telelogic Logiscope. Depending on your type of license agreement, the license information may already have been delivered to you by e-mail. If you are a new user and this is your first license agreement, that is probably not the case.

During installation, it is assumed that you have the license information at hand, at least hostname and port number. You may add the license information later and do not need to install again.

See also: For more details, please refer to “Telelogic Lifecycle Solutions - Licensing Guide”

Installing Telelogic Logiscope in Windows

In the following, it is assumed that the CD-ROM drive is mounted on D:\ (or that D:\ is the place where you have downloaded the software from the support web).

Install Telelogic Logiscope in Windows

1. Log on as administrator or make sure that you have administrative privileges.
2. Exit all running Windows programs.
3. A welcome screen will automatically be opened when inserting the CD, where you can select to start the installation.

Note: If this is not started automatically, or if you have downloaded the software from the support web, double-click D:\setup.exe

Installing Telelogic Logiscope on UNIX

Install Telelogic Logiscope on UNIX

1. Log on to the UNIX host on which you want to install Telelogic Logiscope.
2. Mount the CD-ROM (Volume 4) or download and untar the software from the support web.
3. Execute the installation script from the directory `Logiscope/unix` on the CD-ROM:

```
$ ./tauintst.cd
```

The installation script will start and guide you through the rest of the setup.

License environment on UNIX

During installation, you will be asked for the license server and port number used. You find this information on the first line of the FLEXnet license file. The entered information is verified and if a valid license is found a file `license.dat` is created in the installation directory. This file defines the license environment for Telelogic Logiscope such that any user can start Telelogic Logiscope directly without setting any license environment variables.

If the servername and/or port number is not available or the license cannot be verified a file `license.txt` will be created in the installation directory. Once you have the correct information replace servername and port number in this file with the real values and rename the file to `license.dat`.

For more details, please refer to “Telelogic Lifecycle Solutions - Licensing Guide”.

Set up printers and windows appearance on UNIX (optional)

Before you start using Logiscope on UNIX, you may want to set up PostScript printers. It is also possible to set up the appearance of the windows used by Logiscope (this can also be done later on). Printers and window appearances are set up by using the Control Panel that is supplied with Logiscope. Refer to “Control Panel” on page 5.

Start Telelogic Logiscope

Start Telelogic Logiscope in Windows

Start Telelogic Logiscope from the **Start** menu. In the **Programs** submenu choose **Telelogic** and click **Telelogic Logiscope 6.3**

Start Telelogic Logiscope on UNIX

After the environment is set up, start Telelogic Logiscope by typing the full path name:

```
<installation path>/bin/vcs
```


2

Setting up Logiscope on UNIX

This chapter contains information about how to set up your UNIX environment for Logiscope.

- Logiscope and MainWin
- Control Panel
- Floating toolbars

Logiscope and MainWin

Logiscope on UNIX platforms uses a third-party software, MainWin, that provides access to the Win32 API on UNIX environments. Hence, through MainWin, Logiscope is given a nearly identical behavior and look-and-feel on UNIX as on Windows, the exceptions being described in [“Control Panel” on page 5](#) and [“Floating toolbars” on page 9](#).

Registry

The subset of the Windows Registry that is required for applications that use MainWin to run (such as Logiscope) is, although available to the end user through the `regedit` application, not intended to be modified.

Note: Do not, unless specifically instructed to do so, modify or remove any Registry keys. Otherwise it may result into a corrupt installation of Logiscope.

Control Panel

The Control Panel (implemented by MainWin) is available with Logiscope for the users’ convenience. It contains a collection of utilities that allow to set up properties in a similar fashion as would have been done in a Windows environment.

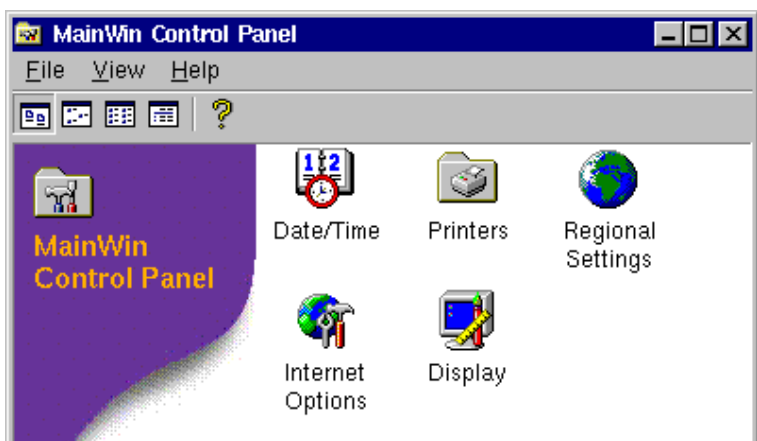


Figure 1: The Control Panel

Starting the control panel

The **Control Panel** is started with the command: `mwcontrol` (`mwcontrol` is located in the `bin` directory of your Logiscope installation).

This command opens a window holding icons that have an appearance and functionality similar to their equivalence in the Windows Control Panel.

Only the Printers and Display settings are meaningful to use in the context of Logiscope.

Setting the appearance of Logiscope windows

The Display applet implements a subset of the Windows Display Properties. Use the Display applet should you want to configure the appearance of the windows used by Logiscope applications (such windows font size and family, colors and sizes of menu bars, scrollbars and buttons etc.)

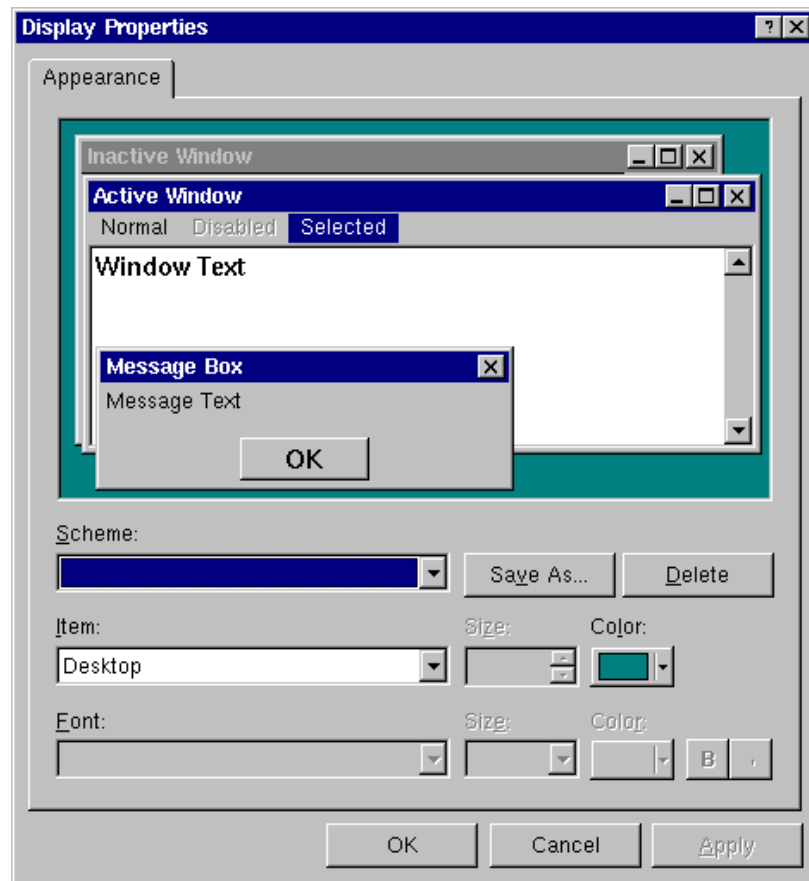


Figure 2: Setting the appearance of Logiscope

When you make changes using the Display applet, the changes only affect Logiscope sessions that you start after you have saved the Display changes. Logiscope sessions that were running when you changed the Display must be restarted for your changes to take effect.

Note: The Display Properties does **not** affect your UNIX desktop. Neither does it impact the color, spacing and font properties used for diagrams managed by Logiscope – to change such properties, use the Options command from the Tools menu in Logiscope.

Setting up printers

The Printers applet is similar to the Windows Printers applet. However, unlike Windows, when setting up a printer you do not map an actual printer for use with Logiscope. Instead, you map a print request to a proper print command on your UNIX host. Thus, the procedure for adding new print capabilities differs slightly from that on Windows.

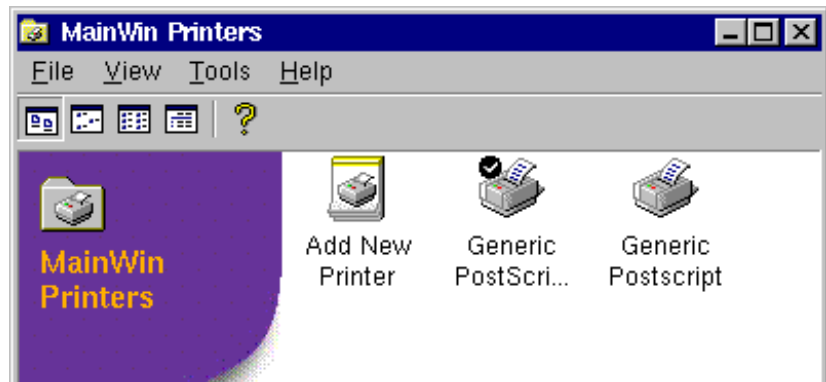


Figure 3: Setting up printers

Note: Changes made using the Printers applet affect Logiscope sessions running on the same machine as soon as you save the changes. Instances of Logiscope running on other machines must be restarted for the changes to take effect.

PostScript printer description files

PostScript Printer Description (PPD) files describe how to use features that are special for a specific PostScript printer. So, to take advantage of your printer's specific features – for example, duplex printing or paper tray selection – you need a PPD file. Most printer vendors provide PPD files for their printers. For your convenience, a large subset of the PPD files that are included with Windows is supplied with Logiscope. In addition, a PPD file for generic PostScript printers, which should allow you to print on any PostScript printer, is also provided.

The Printers applet also includes an “Add New Printer” wizard, described below.

Note: If you already have a printer installed with an application that uses a previous version of Mainwin, then you do not need to add the same printer again. The Printers applet now includes an option, from the Tools menu, to import existing printers. The imported printers will be associated with a default PPD file, and may not access all the printer's features.

Add New Printer

1. Start by launching the Control Panel (by typing the `mwcontrol` command) and double-click Printers.
2. Double-click Add New Printer to start the Add New Printer wizard.
 - At any time, the Add New Printer can be browsed back and forward using the Next and Back buttons.
3. Click Next to specify the UNIX printer of your choice.
 - A list of the printers defined on the UNIX host appears at the bottom of the dialog, along with their descriptions. The list of printers is extracted from the `/etc/printcap` file, which contains a list of all printers on the network to which your UNIX host has access. The `printcap` file is used on all UNIX platforms as the central location for specifying printers. It is configured and maintained by the system administrator.
 - If the printer you want to add is on the list, simply select it.
 - To add a printer that does not appear on the list, type the UNIX name of the printer in the UNIX printer text input field.
4. Click Next in order to specify the default Print Command for the selected printer.
 - Usually, the default command is the one you should use. You should ask your system administrator before changing this command.
 - If you manually added a UNIX name of a printer in the previous step, the print command will automatically use that name.
5. Click Next to specify the manufacturer and model of your printer, and the appropriate PPD file to use.
 - If you have your own PPD file, then click Choose File to locate your PPD file. After specifying the name and location of the file (using full path name), click OK.
 - You must either have write permission to the directory `$MWHOME/system/ppd`, or you must set the `MWPPD_DIR` environment variable to a directory to which you have write permission.
 - If you do not select anything in the Choose PPD File page, then a default generic PPD file is automatically selected.
6. Click Next, which allows you to specify a printer name and description of your own.
 - The Add New Printer wizard provides a default printer name, which you may modify in the Printer Name text box.
 - The Printer Description text box has the same functionality as on Microsoft Windows. This field may be left blank.
7. Click Next and decide whether you want this printer to be your default printer.
 - This Default Printer page will not appear in the wizard if this is the first printer you are setting up. First when adding another printer, then you will be provided the option to choose your default printer.
8. Click Next. Now the wizard asks you if you want to print a test page – like in Windows – that supplies you with various information, such as the features of the added printer.
9. Click Next and verify that the information you specified in the Add New Printer wizard is correct.
 - If you are satisfied with the settings, click Finish.

- Otherwise, click Back to change the settings.

The printer you added now appears in the Printers applet, among the previously added printers.

Floating toolbars

When running Logiscope applications that have floating toolbars, such toolbars behave differently on UNIX from their behavior on Windows.

Behavior on Windows	Behavior on UNIX
Double-clicking the title bar of a floating toolbar window returns the toolbar to its original position on the application's window, below the menu bar.	Double-clicking the title bar of a floating toolbar window does not do anything. To return the toolbar to its location on the application window, click the window system menu at the top left corner of the toolbar window and select <code>Redock</code> .
When dragging a floating toolbar window over the toolbar area of the application window, a rectangle appears to indicate what the size and location of the toolbar would be should it be dropped in that position.	When dragging a floating toolbar window over the toolbar area of the application window, no rectangle appears to indicate the size and location of the toolbar in its place on the application window. Instead, the floating toolbar is dragged. When dropped, the toolbar is correctly placed inside the application's window.

3

Contacting IBM Rational Software Support

Support and information for Telelogic products is currently being transitioned from the Telelogic Support site to the IBM Rational Software Support site. During this transition phase, your product support location depends on your customer history.

Product support

- If you are a heritage customer, meaning you were a Telelogic customer prior to November 1, 2008, please visit the [Logiscope Support Web site](#).

Telelogic customers will be redirected automatically to the IBM Rational Software Support site after the product information has been migrated.

- If you are a new Rational customer, meaning you did not have Telelogic-licensed products prior to November 1, 2008, please visit the [IBM Rational Software Support site](#).

Before you contact Support, gather the background information that you will need to describe your problem. When describing a problem to an IBM software support specialist, be as specific as possible and include all relevant background information so that the specialist can help you solve the problem efficiently. To save time, know the answers to these questions:

- What software versions were you running when the problem occurred?
- Do you have logs, traces, or messages that are related to the problem?
- Can you reproduce the problem? If so, what steps do you take to reproduce it?
- Is there a workaround for the problem? If so, be prepared to describe the workaround.

Other information

For Rational software product news, events, and other information, visit the [IBM Rational Software Web site](#).

4

Notices

This information was developed for products and services offered in the U.S.A. IBM may not offer the products, services, or features discussed in this document in other countries. Consult your local IBM representative for information on the products and services currently available in your area. Any reference to an IBM product, program, or service is not intended to state or imply that only that IBM product, program, or service may be used. Any functionally equivalent product, program, or service that does not infringe any IBM intellectual property right may be used instead. However, it is the user's responsibility to evaluate and verify the operation of any non-IBM product, program, or service.

IBM may have patents or pending patent applications covering subject matter described in this document. The furnishing of this document does not grant you any license to these patents. You can send written license inquiries to:

IBM Director of Licensing
IBM Corporation
North Castle Drive
Armonk, NY 10504-1785
U.S.A.

For license inquiries regarding double-byte character set (DBCS) information, contact the IBM Intellectual Property Department in your country or send written inquiries to:

IBM World Trade Asia Corporation
Licensing
2-31 Roppongi 3-chome, Minato-ku
Tokyo 106-0032, Japan

The following paragraph does not apply to the United Kingdom or any other country where such provisions are inconsistent with local law: INTERNATIONAL BUSINESS MACHINES CORPORATION PROVIDES THIS PUBLICATION "AS IS" WITHOUT WARRANTY OF ANY KIND, EITHER EXPRESS OR IMPLIED, INCLUDING, BUT NOT LIMITED TO, THE IMPLIED WARRANTIES OF NON-INFRINGEMENT, MERCHANTABILITY OR FITNESS FOR A PARTICULAR PURPOSE. Some states do not allow disclaimer of express or implied warranties in certain transactions. Therefore, this statement may not apply to you.

This information could include technical inaccuracies or typographical errors. Changes are periodically made to the information herein; these changes will be incorporated in new editions of the publication. IBM may make improvements and/or changes in the product(s) and/or the program(s) described in this publication at any time without notice.

Any references in this information to non-IBM Web sites are provided for convenience only and do not in any manner serve as an endorsement of those Web sites. The materials at those Web sites are not part of the materials for this IBM product and use of those Web sites is at your own risk.

IBM may use or distribute any of the information you supply in any way it believes appropriate without incurring any obligation to you.

Licensees of this program who wish to have information about it for the purpose of enabling: (i) the exchange of information between independently created programs and other programs (including this one) and (ii) the mutual use of the information which has been exchanged, should contact:

Intellectual Property Dept. for Rational Software
IBM Corporation
1 Rogers Street
Cambridge, Massachusetts 02142
U.S.A.

Such information may be available, subject to appropriate terms and conditions, including in some cases, payment of a fee.

The licensed program described in this document and all licensed material available for it are provided by IBM under terms of the IBM Customer Agreement, IBM International Program License Agreement or any equivalent agreement between us.

Any performance data contained herein was determined in a controlled environment. Therefore, the results obtained in other operating environments may vary significantly. Some measurements may have been made on development-level systems and there is no guarantee that these measurements will be the same on generally available systems. Furthermore, some measurements may have been estimated through extrapolation. Actual results may vary. Users of this document should verify the applicable data for their specific environment.

Information concerning non-IBM products was obtained from the suppliers of those products, their published announcements or other publicly available sources. IBM has not tested those products and cannot confirm the accuracy of performance, compatibility or any other claims related to non-IBM products. Questions on the capabilities of non-IBM products should be addressed to the suppliers of those products.

This information contains examples of data and reports used in daily business operations. To illustrate them as completely as possible, the examples include the names of individuals, companies, brands, and products. All of these names are fictitious and any similarity to the names and addresses used by an actual business enterprise is entirely coincidental.

If you are viewing this information softcopy, the photographs and color illustrations may not appear.

Trademarks

IBM, the IBM logo, ibm.com, Telelogic, Telelogic Synergy, Telelogic Change, Telelogic DOORS, Telelogic Tau, Telelogic DocExpress, Telelogic Rhapsody, Telelogic Statemate, and Telelogic System Architect are trademarks or registered trademarks of International Business Machine Corporation in the United States, other countries, or both, are trademarks of Telelogic, an IBM Company, in the United States, other countries, or both. These and other IBM trademarked terms are marked on their first occurrence in this information with the appropriate symbol (® or ™), indicating US registered or common law trademarks owned by IBM at the time this information was published. Such trademarks may also be registered or common law trademarks in other countries. A current list of IBM trademarks is available on the Web at:

www.ibm.com/legal/copytrade.html.

Adobe, the Adobe logo, Acrobat, the Acrobat logo, FrameMaker, and PostScript are trademarks of Adobe Systems Incorporated or its subsidiaries and may be registered in certain jurisdictions.

AIX and Informix are trademarks or registered trademarks of International Business Machines Corporation in the United States, other countries, or both.

HP and HP-UX are registered trademarks of Hewlett-Packard Corporation.

Java and all Java-based trademarks and logos are trademarks of Sun Microsystems, Inc. in the United States, other countries, or both.

Linux is a trademark of Linus Torvalds in the United States, other countries, or both.

Macrovision and FLEXnet are registered trademarks or trademarks of Macrovision Corporation.

Microsoft, Windows, Windows 2003, Windows XP, Windows Vista and/or other Microsoft products referenced herein are either trademarks or registered trademarks of Microsoft Corporation.

Netscape and Netscape Enterprise Server are registered trademarks of Netscape Communications Corporation in the United States and other countries.

Sun, Sun Microsystems, Solaris, and Java are trademarks or registered trademarks of Sun Microsystems, Inc. in the United States and other countries.

Pentium is a trademark of Intel Corporation.

UNIX is a registered trademark of The Open Group in the United States and other countries.

Other company, product or service names may be trademarks or service marks of others.

