

Rational Synchronization Server Help

Release 1.4

Part Number: MN-SCH-IV-TSF12-08-06

Contents

[Introduction](#)

[About the Integration](#)

[Notices](#)

[Trademarks](#)

[Product Requirements](#)

[Installation Instructions](#)

[Uninstalling the Integration](#)

[Synchronization Server Administration](#)

[Troubleshooting](#)

[Contact Support](#)

[Contacting IBM Rational Software Support](#)

[Prerequisites](#)

[Submitting Problems](#)

Introduction

About the Integration

The Rational Synchronization Server is an extensible framework which can host any number of synchronizer plug-ins written in a compatible way. The 1.4 version of the Synchronization Server comes with the following six synchronizers:

1. Rational Change for Change Interface
2. Rational Change for Focal Point Interface
3. Rational DOORS for Focal Point Interface
4. Rational Focal Point for Focal Point Interface
5. Rational Change for Rational Team Concert Interface
6. Rational Change for ClearQuest Interface

Notices

© Copyright IBM Corporation 2006, 2009

US Government Users Restricted Rights—Use, duplication or disclosure restricted by GSA ADP Schedule Contract with IBM Corp.

This information was developed for products and services offered in the U.S.A. IBM may not offer the products, services, or features discussed in this document in other countries. Consult your local IBM representative for information on the products and services currently available in your area. Any reference to an IBM product, program, or service is not intended to state or imply that only that IBM product, program, or service may be used. Any functionally equivalent product, program, or service that does not infringe any IBM intellectual property right may be used instead. However, it is the user's responsibility to evaluate and verify the operation of any non-IBM product, program, or service.

IBM may have patents or pending patent applications covering subject matter described in this document. The furnishing of this document does not grant you any license to these patents. You can send written license inquiries to:

IBM Director of Licensing

IBM Corporation

North Castle Drive

Armonk, NY 10504-1785

U.S.A.

For license inquiries regarding double-byte character set (DBCS) information, contact the IBM Intellectual Property Department in your country or send written inquiries to:

IBM World Trade Asia Corporation

Licensing

2-31 Roppongi 3-chome, Minato-ku

Tokyo 106-0032, Japan

The following paragraph does not apply to the United Kingdom or any other country where such provisions are inconsistent with local law:

INTERNATIONAL BUSINESS MACHINES CORPORATION PROVIDES THIS PUBLICATION "AS IS" WITHOUT WARRANTY OF ANY KIND, EITHER EXPRESS OR IMPLIED, INCLUDING, BUT NOT LIMITED TO, THE IMPLIED WARRANTIES OF NON-INFRINGEMENT, MERCHANTABILITY OR FITNESS FOR A PARTICULAR PURPOSE. Some states do not allow disclaimer of express or implied warranties in certain transactions. Therefore, this statement may not apply to you.

This information could include technical inaccuracies or typographical errors. Changes are periodically made to the information herein; these changes will be incorporated in new editions of the publication. IBM may make improvements and/or changes in the product(s) and/or the program(s) described in this publication at any time without notice.

Any references in this information to non-IBM Web sites are provided for convenience only and do not in any manner serve as an endorsement of those Web sites. The materials at those Web sites are not part of the materials for this IBM product and use of those Web sites is at your own risk.

IBM may use or distribute any of the information you supply in any way it believes appropriate without incurring any obligation to you.

Licenses of this program who wish to have information about it for the purpose of enabling: (i) the exchange of information between independently created programs and other programs (including this one) and (ii) the mutual use of the information which has been exchanged, should contact:

Intellectual Property Dept. for Rational Software

IBM Corporation

1 Rogers Street Cambridge,

Massachusetts 02142

U.S.A.

Such information may be available, subject to appropriate terms and conditions, including in some cases, payment of a fee.

The licensed program described in this document and all licensed material available for it are provided by IBM under terms of the IBM Customer Agreement, IBM International Program License Agreement or any equivalent agreement between us.

Any performance data contained herein was determined in a controlled environment. Therefore, the results obtained in other operating environments may vary significantly. Some measurements may have been made on development-level systems and there is no guarantee that these measurements will be the same on generally available systems. Furthermore, some measurements may have been estimated through extrapolation. Actual results may vary. Users of this document should verify the applicable data for their specific environment.

Information concerning non-IBM products was obtained from the suppliers of those products, their published announcements or other publicly available sources. IBM has not tested those products and cannot confirm the accuracy of performance, compatibility or any other claims related to non-IBM products. Questions on the capabilities of non-IBM products should be addressed to the suppliers of those products.

This information contains examples of data and reports used in daily business operations. To illustrate them as completely as possible, the examples include the names of individuals, companies, brands, and products. All of these names are fictitious and any similarity to the names and addresses used by an actual business enterprise is entirely coincidental.

If you are viewing this information softcopy, the photographs and color illustrations may not appear.

Licensee's use of this software temporarily consumes one license of each IBM Program identified in the Typical or Custom installation option, as applicable; Licensee agrees it may not have use of such affected IBM Programs until synchronization is completed.

Trademarks

See <http://www.ibm.com/legal/copytrade.html>.

Product Requirements

The following products are required to run the Synchronization Server. See the help for each individual synchronizer for information on products that are supported.

- Apache Tomcat 5.5.x server
- Sun or IBM Java 6 Runtime or JDK

Installation Instructions

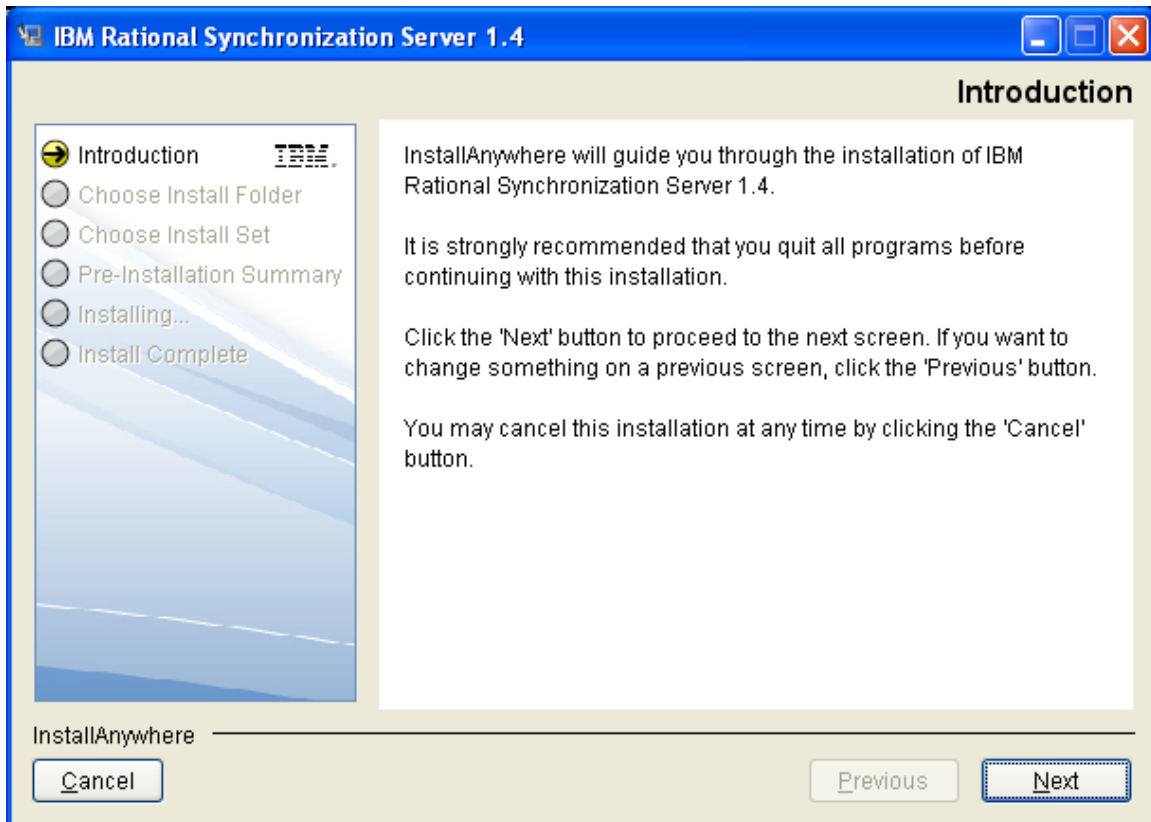
Prior to installation, ensure that you have the following environment variables set correctly:

- JAVA_HOME – path to a Sun or IBM Java 6 JDK
- OR
- JRE_HOME – path to a Sun or IBM Java 6 Runtime Environment
 - CATALINA_HOME – path to your Tomcat installation
 - DOORS_HOME – path to a DOORS client installation. This variable is only required if you will be installing the Rational DOORS for Focal Point Interface.

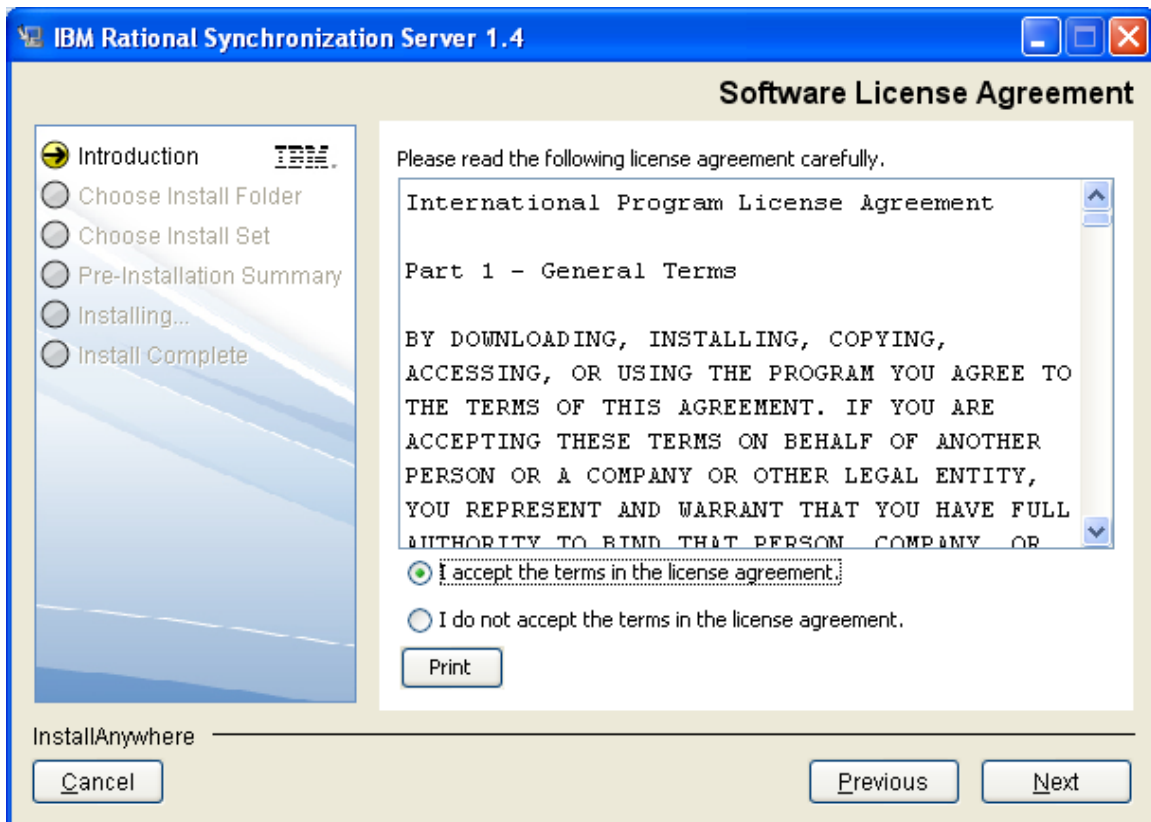
After you have verified your environment, run the correct binary for your platform. For windows, run `sync_server_install.exe`.

Note: When installing on Windows, IBM recommends that you do not install the Synchronization Server on the same Tomcat installation where Focal Point is installed.

After the installation program initializes, you will be presented with a welcome screen. Click **Next** to continue.

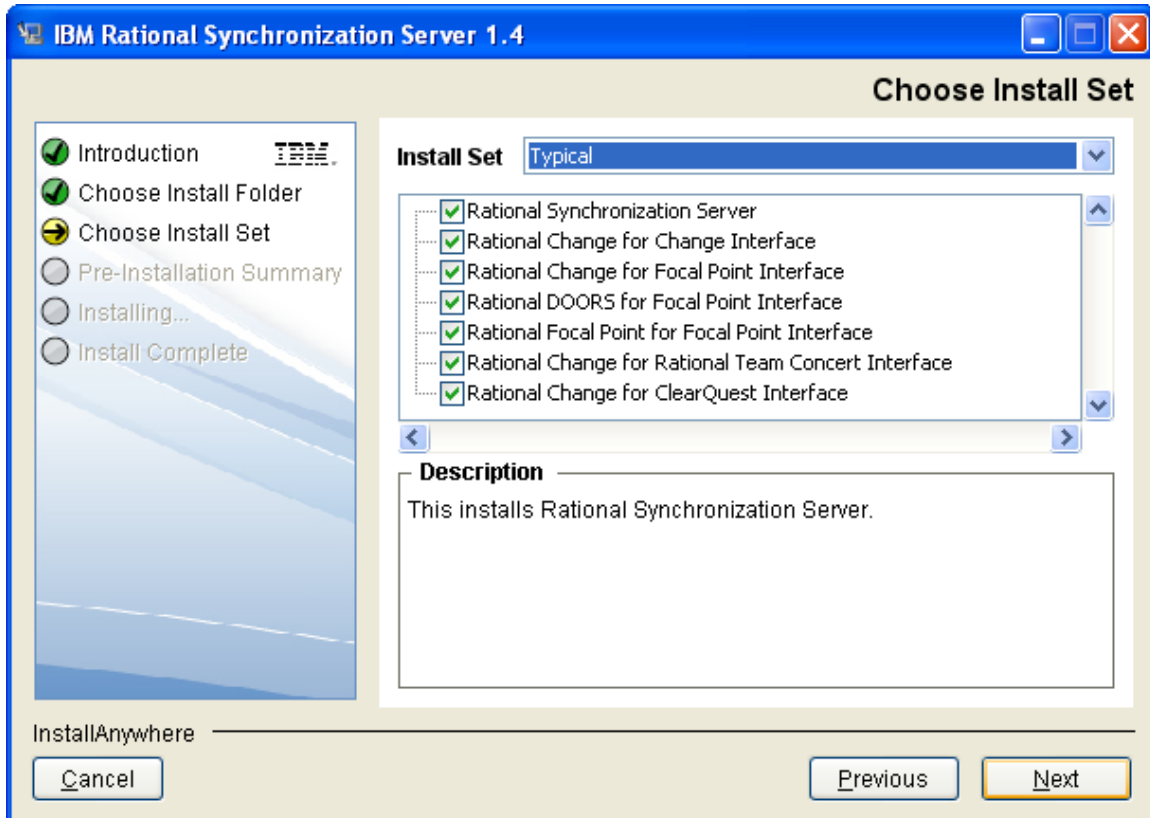


Next you will be asked to accept the license agreement. Accept the terms and click next.

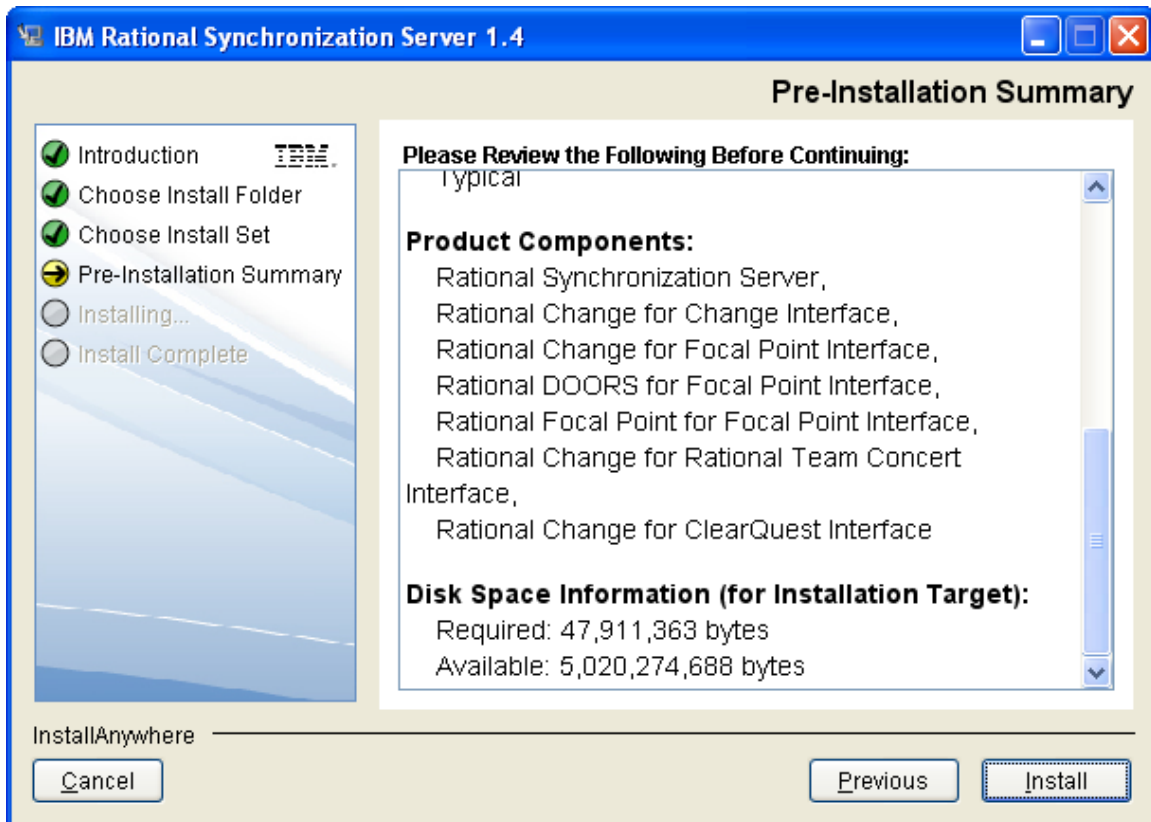


You will be asked to choose the type of installation. Choosing **Typical** will install the Synchronization Server along with the Rational Change for Change Interface, Rational Change for Focal Point Interface, Rational DOORS for Focal Point Interface, Rational Focal Point for Focal Point Interface, Rational Change for Rational Team Concert Interface, and Rational Change for ClearQuest Interface. Choosing **Custom** will allow you to determine which components you'd like to install. Choosing **Minimal** will install by default only the Synchronization Server.

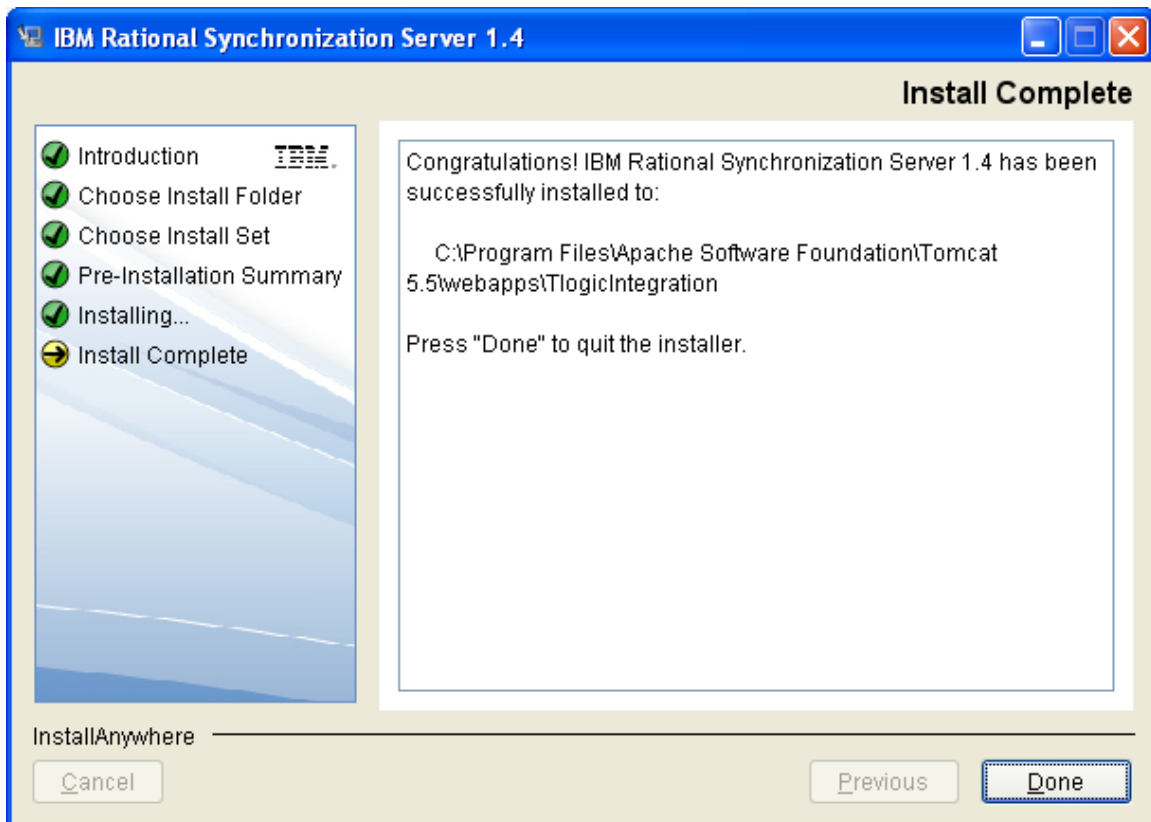
The components that will be installed will have a checked checkbox next to the Synchronizer's name. You may change the components that you want installed by clearing the checkbox next to the name. Click **Next** when you are satisfied with the components that will be installed.



Next, you will see a summary of what will be installed. Click **Install** to continue the installation.



When the installation is complete, you will see the following summary dialog. Click **Done**.



Note: If you are installing Synchronization Server on Solaris and you wish to use an IBM Java Runtime Environment (JRE), you must follow these additional steps:

1. Go to `$(CATALINA_HOME)/bin`
2. Open `setclasspath.sh` in a text editor
3. Find this line: `JAVA_ENDORSED_DIRS="$BASEDIR"/common/endorsed`
4. Change the line to:
`JAVA_ENDORSED_DIRS="$BASEDIR"/common/endorsed:"$JRE_HOME"/lib/endorsed`
5. Restart your Tomcat server

Uninstalling the Integration

Before uninstalling the integration, you should stop your Tomcat server to ensure that all synchronizers are stopped.

On Windows, open **Add/Remove Programs** from the Control Panel. Find **Rational Synchronization Server** and click **Remove**.

Synchronization Server Administration

To configure the Synchronization Server, you can use the web-based administration interface. You can access the admin interface by pointing your web browser at `http://localhost:<port>/TlogicIntegration/admin/SyncFramework.html`, where `<port>` is the port number your Tomcat server is running on. You will be required to log in to access the admin interface. Any user that has "administrator" role in Tomcat is valid. Tomcat users are defined in `CATALINA_HOME/conf/tomcat-users.xml`.

You can obtain this document and help on the Synchronizers using the admin interface as well.

To start or stop synchronizers, click the **Start/Stop** link on the left side of the screen. All existing synchronizers and their respective statuses will be listed in the table as shown below:

The screenshot displays the IBM Rational Synchronization Server Administration web interface. The main content area is titled "Start/Stop Synchronizer" and features a table listing installed synchronizers. The table has columns for Status, Link Name, Last Sync Time, Next Sync Time, Status Message, Log, and Start/Stop. Two synchronizers are listed, both with a status of "Not Started". Each row includes "Open" and "Clear" buttons in the Log column, and a "Start" button with a checked checkbox in the Start/Stop column. A "Refresh" button is located above the table. The left sidebar contains navigation links for Administration (Start/Stop, Email Notification, Readme, Synchronization Server Help) and Installed Synchronizers (Rational Change for Change Interface, Rational Change for Focal Point Interface, Rational Change for ClearQuest Interface, Rational DOORS for Focal Point Interface, Rational Focal Point for Focal Point Interface, Rational Change for Rational Team Concert Interface).

Status	Link Name	Last Sync Time	Next Sync Time	Status Message	Log	Start/Stop
Not Started	\\changechangeadapter\changeadapter_link_03262009073703.xml				Open Clear	<input checked="" type="checkbox"/> Start
Not Started	\\changertcadapter\rtcadapter_link_03312009071605.xml	04/02/2009 13:59:27			Open Clear	<input checked="" type="checkbox"/> Start

If a synchronizer is not running, a **Start** button will be displayed in its row. Clicking **Start** will start the synchronizer thread, and it will automatically synchronize on the time and date specified in the **Next Sync Time** field. Clicking **Stop** will stop the thread from running.

Clicking **Open** will display the log file for that synchronizer (if it exists). The log can be manually refreshed by clicking **Refresh**. The **Clear** operation will permanently delete the contents of the log.

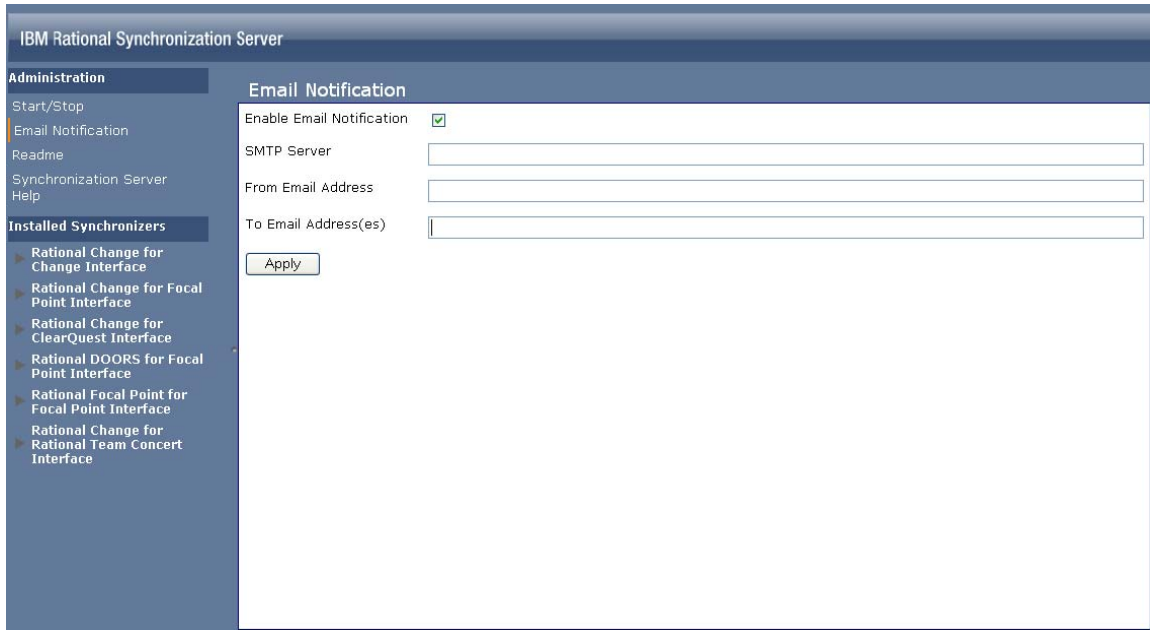
- ❖ A new feature in the **Start/Stop** page called **Log Debug Messages** is available. By checking the checkbox **Log Debug Messages**, Rational Synchronization Server will automatically log DEBUG messages into the log.

To configure a synchronizer, click the link for that synchronizer in the **Installed Synchronizers** section, and then click **Configure**. Detailed instructions for configuring each synchronizer are provided in the help for that synchronizer.

The screenshot displays the IBM Rational Synchronization Server administration console. The left-hand navigation pane is divided into two main sections: 'Administration' and 'Installed Synchronizers'. Under 'Administration', there are links for 'Start/Stop', 'Email Notification', 'Readme', 'Synchronization Server', and 'Help'. The 'Readme' link is currently selected. Under 'Installed Synchronizers', several specific synchronizers are listed with expandable arrows, including 'Rational Change for Change Interface', 'Rational Change for Focal Point Interface', 'Rational Change for ClearQuest Interface', 'Rational DOORS for Focal Point Interface', 'Rational Focal Point for Focal Point Interface', and 'Rational Change for Rational Team Concert Interface'. The main content area shows the 'Readme' page for 'IBM Rational Synchronization Server 1.4'. The page title is 'IBM Rational Synchronization Server 1.4 readme' and it is dated 'July 15, 2008'. The page contains copyright information for IBM Corporation (2006, 2009) and a disclaimer for U.S. Government Users. The main body of the page states that it contains last-minute product information and updates to the IBM Rational® Synchronization Server™ 1.4. It is divided into the following sections:

- [System requirements](#)
- [Operating system locales](#)
- [Compatible products](#)
- [Installing Rational Synchronization Server 1.4](#)
- [Obtaining a license](#)
- [What's new in version 1.4](#)
- [Known problems](#)
- [Fixed problems](#)
- [Contacting Support](#)

- ❖ A new feature under the **Administration** section called **Email Notification** is available. In this section, you can specify the properties needed to enable or disable **Email Notification** for Synchronization Server. If you choose to enable **Email Notification**, you must make sure the checkbox **Enable Email Notification** is enabled. Specify the **SMTP Server**, **From Email Address**, and **To Email Address(es)** to use for email sending. If you choose to disable **Email Notification**, you must make sure the checkbox **Enable Email Notification** is disabled and the rest of the properties can be left empty.



Email Notification allows Rational Synchronization Server to automatically send emails to specific email address(es) whenever an ERROR is written into the logs. This feature must be configured in order for **Email Notification** to work properly. You may also choose to disable **Email Notification**, which means that no emails will be sent when an ERROR occurs.

❖ A new feature called **Attribute Value Mapping** has also been added to **Rational Synchronization Server**. This new feature is only enabled for the following Synchronizers: **Rational Change for Change Interface**, **Rational Change for Rational Team Concert Interface**, and **Rational Change for ClearQuest Interface**.

- **Attribute Value Mapping** allows users to map **Rational Change** attribute values to **Adapter** attribute values. The mappings will be specified by using a specific XML file.
 - For each configuration of a Synchronizer, there can only be one **Attribute Value Mapping** XML defined.
 - The XML file must be manually created by the user in one of the following directories depending on the Synchronizer used:
 - `CATALINA_HOME/webapps/TlogicIntegration/WEB-INF/conf/Mapping/changechangeadapter`
 - `CATALINA_HOME/webapps/TlogicIntegration/WEB-INF/conf/Mapping/changertcadapter`
 - `CATALINA_HOME/webapps/TlogicIntegration/WEB-INF/conf/Mapping/cqchangeadapter`
- The XML file **MUST** have the exact same name as the Synchronizer's Link File Name, which is located in the Links directory. (i.e. For a **Rational Change for Rational Team Concert Interface** synchronizer, the **Attribute Value Mapping** XML must have a name similar to `rtcadapter_link_MMddyyyHHmmss.xml`)
- The attributes that should be defined in the **Attribute Value Mapping** XML should be attributes that have values that may be selected from a list box.
- Users must define the **Attribute Value Mapping** XML in the following format:

```
<?xml version="1.0" encoding="UTF-8" standalone="yes"?>
<attrValueMap>
  <valuePair>
    <changeAttrId/>
    <adapterAttrId/>
  </valuePair>
</attrValueMap>
```

```

        <changeAttrValue/>
        <adapterAttrValue/>
    </valuePair>
    <valuePair>
        <changeAttrId/>
        <adapterAttrId/>
        <changeAttrValue/>
        <adapterAttrValue />
    </valuePair>
    .
    .
    .
</attrValueMap>

```

changeAttrId is the ID of the **Rational Change** attribute and not the display name.
adapterAttrId is the ID of the **Adapter** attribute and not the display name.
changeAttrValue is the **Rational Change** attribute value that will be mapped to a corresponding **Adapter** attribute value.
adapterAttrValue is the **Adapter** attribute value that will be mapped to a corresponding **Rational Change** attribute value.

Example:

```

<?xml version="1.0" encoding="UTF-8" standalone="yes"?>
<attrValueMap>
  <valuePair>
    <changeAttrId>priority</changeAttrId>
    <adapterAttrId>internalPriority</adapterAttrId>
    <changeAttrValue>1</changeAttrValue>
    <adapterAttrValue>High</adapterAttrValue>
  </valuePair>
  <valuePair>
    <changeAttrId>priority</changeAttrId>
    <adapterAttrId>internalPriority</adapterAttrId>
    <changeAttrValue>2</changeAttrValue>
    <adapterAttrValue>Medium</adapterAttrValue>
  </valuePair>
</attrValueMap>

```

Troubleshooting

Logs for the Synchronization Server synchronizers are located at *CATALINA_HOME/webapps/TlogicIntegration/WEB-INF/logs*. These logs should be sent to IBM Support to help diagnose the cause of any errors.

Contact Support

Contacting IBM Rational Software Support

If the self-help resources have not provided a resolution to your problem, you can contact IBM® Rational® Software Support for assistance in resolving product issues.

Note: If you are a heritage Telelogic customer, a single reference site for support resources is located at <http://www.ibm.com/software/rational/support/telelogic/>

Prerequisites

To submit your problem to IBM Rational Software Support, you must have an active Passport Advantage® software maintenance agreement. Passport Advantage is the IBM comprehensive software licensing and software maintenance (product upgrades and technical support) offering. You can enroll online in Passport Advantage from <http://www.ibm.com/software/lotus/passportadvantage/howtoenroll.html>

- To learn more about Passport Advantage, visit the Passport Advantage FAQs at http://www.ibm.com/software/lotus/passportadvantage/brochures_faqs_quickguides.html.
- For further assistance, contact your IBM representative.

To submit your problem online (from the IBM Web site) to IBM Rational Software Support, you must additionally:

- Be a registered user on the IBM Rational Software Support Web site. For details about registering, go to <http://www.ibm.com/software/support/>.
- Be listed as an authorized caller in the service request tool.

Submitting Problems

To submit your problem to IBM Rational Software Support:

1. Determine the business impact of your problem. When you report a problem to IBM, you are asked to supply a severity level. Therefore, you need to understand and assess the business impact of the problem that you are reporting.

Use the following table to determine the severity level.

Severity	Description
1	The problem has a critical business impact: You are unable to use the program, resulting in a critical impact on operations. This condition requires an immediate solution.
2	This problem has a significant business impact: The program is usable, but it is severely limited.
3	The problem has some business impact: The program is usable, but less significant features (not critical to operations) are unavailable.
4	The problem has minimal business impact: The problem causes little impact on operations or a reasonable circumvention to the problem was implemented.

2. Describe your problem and gather background information. When describing a problem to IBM, be as specific as possible. Include all relevant background information so that IBM Rational Software Support specialists can help you solve the problem efficiently. To save time, know the answers to these questions:

- What software versions were you running when the problem occurred?
To determine the exact product name and version, use the option applicable to you:

- Start the IBM Installation Manager and select **File > View Installed Packages**. Expand a package group and select a package to see the package name and version number.
 - Start your product, and click **Help > About** to see the offering name and version number.
 - What is your operating system and version number (including any service packs or patches)?
 - Do you have logs, traces, and messages that are related to the problem symptoms?
 - Can you recreate the problem? If so, what steps do you perform to recreate the problem?
 - Did you make any changes to the system? For example, did you make changes to the hardware, operating system, networking software, or other system components?
 - Are you currently using a workaround for the problem? If so, be prepared to describe the workaround when you report the problem.
3. Submit your problem to IBM Rational Software Support. You can submit your problem to IBM Rational Software Support in the following ways:

- **Online:** Go to the IBM Rational Software Support Web site at <https://www.ibm.com/software/rational/support/> and in the Rational support task navigator, click **Open Service Request**. Select the electronic problem reporting tool, and open a Problem Management Record (PMR), describing the problem accurately in your own words.

For more information about opening a service request, go to <http://www.ibm.com/software/support/help.html>

You can also open an online service request using the IBM Support Assistant. For more information, go to <http://www.ibm.com/software/support/isa/faq.html>.

- **By phone:** For the phone number to call in your country or region, go to the IBM directory of worldwide contacts at <http://www.ibm.com/planetwide/> and click the name of your country or geographic region.
- **Through your IBM Representative:** If you cannot access IBM Rational Software Support online or by phone, contact your IBM Representative. If necessary, your IBM Representative can open a service request for you. You can find complete contact information for each country at <http://www.ibm.com/planetwide/>.