

# Telelogic D00RS Web Access

Using Telelogic D00RS Web Access





*Telelogic D00RS Web Access*  
*Using Telelogic D00RS Web Access*  
*Release 1.1.0.0*

---

Before using this information, be sure to read the general information under the "Notices" chapter on page 29.

This edition applies to **VERSION 1.1.0.0, Telelogic DOORS Web Access** and to all subsequent releases and modifications until otherwise indicated in new editions.

© **Copyright IBM Corporation 2007, 2008**

US Government Users Restricted Rights—Use, duplication or disclosure restricted by GSA ADP Schedule Contract with IBM Corp.®

# Table of contents

<b>Chapter 1: Getting started</b>	<b>1</b>
About requirements . . . . .	1
About DWA . . . . .	2
Log on to DWA . . . . .	2
Log off of DWA . . . . .	4
<b>Chapter 2: Roles</b>	<b>5</b>
About roles . . . . .	5
<b>Chapter 3: About the DWA interface</b>	<b>7</b>
The Welcome Screen . . . . .	7
The DWA Workspace . . . . .	8
Database Explorer . . . . .	8
Module display . . . . .	10
Details Panel . . . . .	11
<b>Chapter 4: Managing modules</b>	<b>13</b>
Open a module . . . . .	13
Close a module . . . . .	13
About favorites . . . . .	13
Add a module to your list of favorites . . . . .	14
<b>Chapter 5: About baselines</b>	<b>15</b>
About baselines . . . . .	15
View a baseline . . . . .	15
<b>Chapter 6: Discussions</b>	<b>17</b>
About discussions . . . . .	17
Create a module discussion . . . . .	17
View a module discussion . . . . .	18

Add a comment to a module discussion . . . . .	18
Close a module discussion . . . . .	18
Reopen a module discussion . . . . .	19
Create an object discussion. . . . .	19
View an object discussion. . . . .	19
Add a comment to an object discussion . . . . .	20
Close an object discussion . . . . .	20
Reopen an object discussion. . . . .	21

**Chapter 7: Finding text** **23**

Find text in a module . . . . .	23
Go to a particular object. . . . .	23

**Chapter 8: About links** **25**

About links . . . . .	25
About link arrows in a module. . . . .	25

**Chapter 9: Using views** **27**

About views. . . . .	27
About current and available views . . . . .	28
Change the view . . . . .	28

**Chapter 10: Notices** **29**

Trademarks . . . . .	31
----------------------	----

# 1

## Getting started

Welcome to DOORS® Web Access™ (DWA), a powerful tool that allows you to access modules held on a Telelogic® DOORS® (DOORS) Database.

### What do you want to learn about?

- About requirements
- About DWA

### What do you want to do?

- Log on to DWA
- Log off of DWA

## About requirements

Requirements describe what users want from a product or service.

For example, if you are planning to buy a new car, you might sit down with your family and make a list of the things you need from the car. A typical list might be:

- Must be able to carry at least five people
- Must have fuel consumption of over 35 miles per gallon
- Must cost no more than X

Less important features that you would like, such as a particular color, would be further down your list. At the end of the exercise, you have a list of **user requirements**, which specify the kind of car you want to buy.

The exercise of listing requirements for buying a car is fairly straightforward. However, the designers of that car need more.

The designers need **system requirements**, which describe the features the car must provide. From these they can prepare detailed design documents. Each part of the design must be tested, so tests are specified in a separate document.

Well defined requirements ensure that your customers get what they want and show you what product you have to build or what service you have to provide. For information on writing requirements, see *Get it Right the First Time*, which is on the **Telelogic Lifecycle Solutions DVD**.

## About DWA

DWA is a member of the DOORS product family, which is a package of requirements management tools designed to help enterprises take control of and effectively manage projects from the concepts phase right through to completion.

DWA is a web-based front-end that allows you to access modules held on your DOORS Database. With this version of DWA you can:

- Open modules read-only
- View module baselines
- Access different module views
- Follow links
- Carry out online “discussions” of objects and modules

## Log on to DWA

You access DWA through your browser.

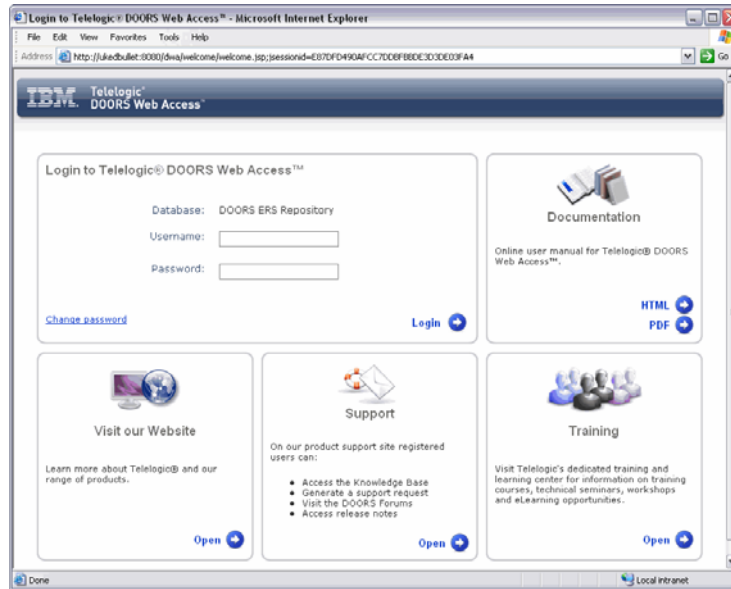
### To log on to DWA:

1. In your default browser, navigate to the URL that points to the DWA Server.  
For example:

```
http://localhost:8080/dwa
```

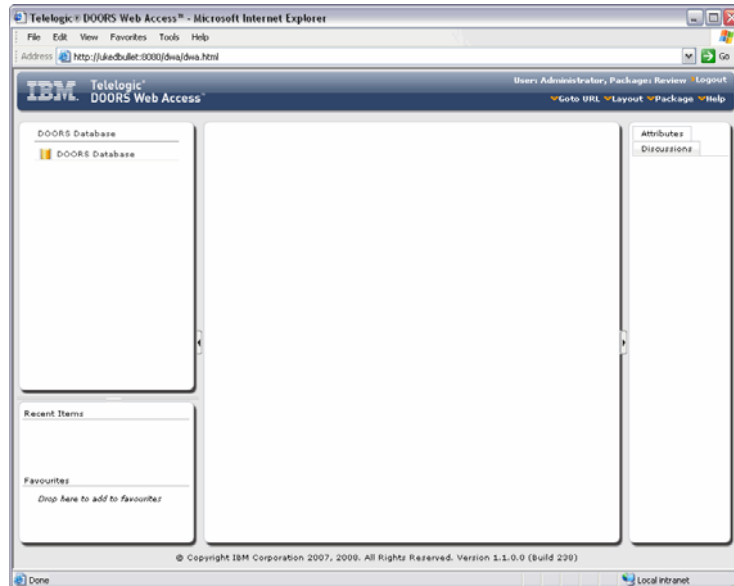


DWA starts and the Welcome Screen is displayed.



2. Enter your **Username** and **Password**, and press **Login**.

You are connected to the DOORS database.



## Log off of DWA

### To log off of DWA:

1. Press **Logout**.  
The Welcome Screen is displayed.
2. Navigate away from the URL that points to the DWA Server.

# 2

## Roles

### What do you want to learn about?

- About roles

### About roles

The identity a user assumes is called a **role**. A role essentially describes the set of tasks a person is allowed to perform.

DWA provides the following pre-defined **roles**:

- Read User
- Reviewer

Each role is allowed to perform a set of tasks.

Roles are **assigned** to users, and a user can have more than one role in a database. For example, a user can be both Read User and a Reviewer. The user chooses the appropriate role after logging on to DWA using the **Packages** drop-down menu.

The default role for all users is Reviewer.

This table describes the pre-defined roles in this version of DWA:

<b>Role</b>	<b>Description</b>
<b>Read User</b>	This role has no explicit capabilities, and allows read-only access to modules.
<b>Reviewer</b>	This role allows read-only access to modules, along with all the tasks associated with discussions.

After you log on, DWA allows you to select a role from those available to you within that database.



# 3

## ***About the DWA interface***

### **What do you want to learn about?**

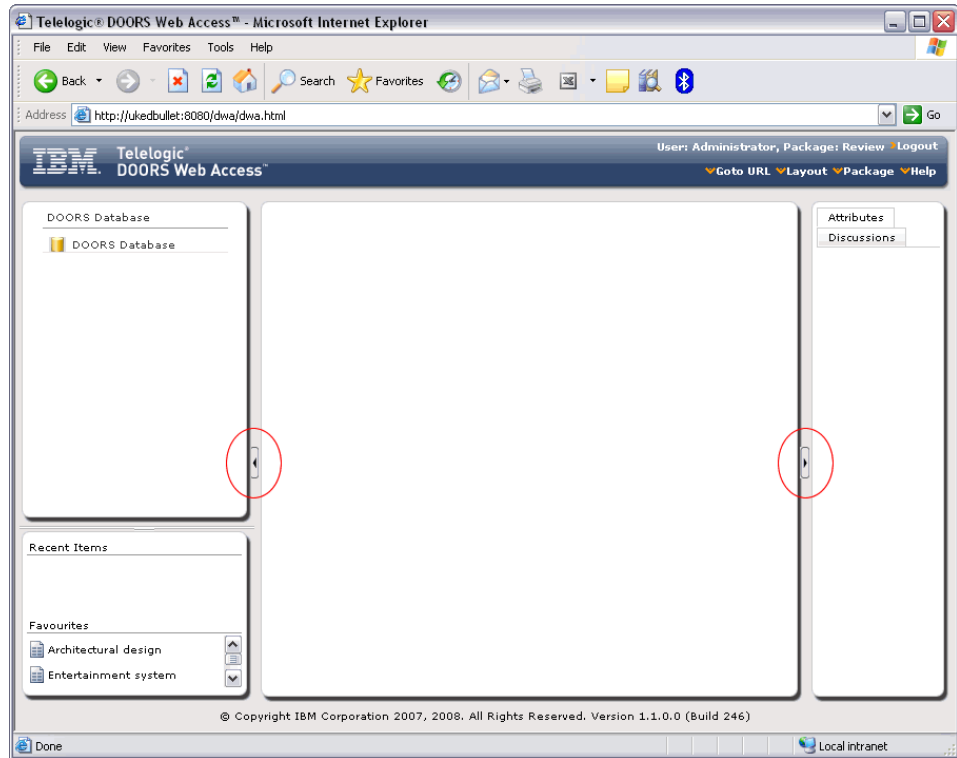
- The Welcome Screen
- The DWA Workspace
- Database Explorer
- Module display
- Details Panel

### **The Welcome Screen**

The DWA Welcome Screen contains the log on area as well as links to the Internet and shortcuts to user documentation.

## The DWA Workspace

When you log on, the DWA workspace is displayed:



The workspace consists of three panes:

- The left pane contains the DOORS Database Explorer and the Recent Items and Favorites
- The middle pane is the module space, where open modules and baselines are displayed
- The right pane contains the Details panel, with tabbed sections for Attributes and Discussions

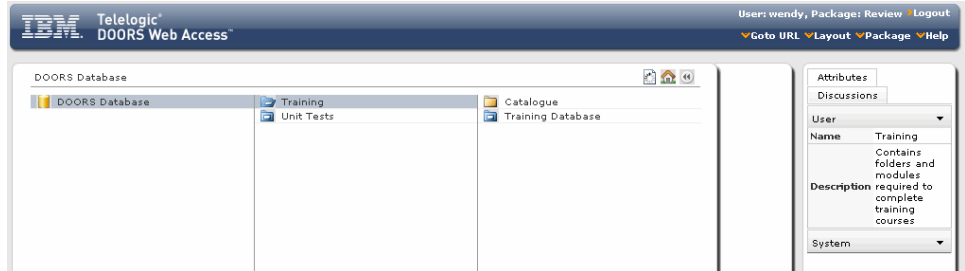
You can expand and collapse the side panes using the arrow controls, which are circled in the previous example.

## Database Explorer

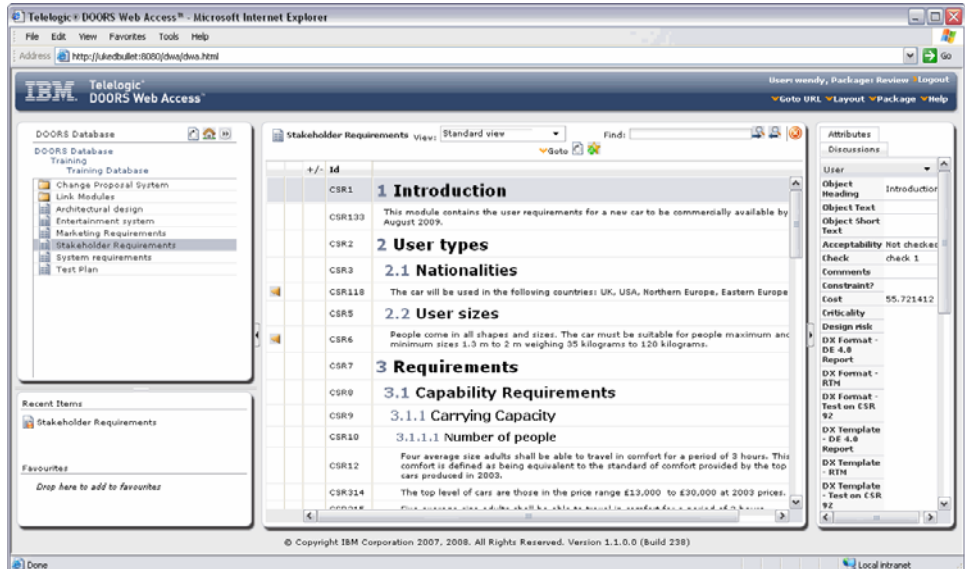
Use the Database Explorer to navigate through the DOORS database. As you open projects and folders, the Database Explorer expands to display their

contents. The properties of the item that is selected in the Database Explorer are displayed in the Details panel.





For example, if you double-click DOORS Database, then double-click the Training project as in the following example, the contents of the Training project are displayed in the Database Explorer, and its attributes are displayed in the Details Panel:



When you navigate to a module, and open it, the Database Explorer returns to a single panel with the hierarchy expanded, as in the following example:



The following table describes the controls that are available for the Database Explorer.

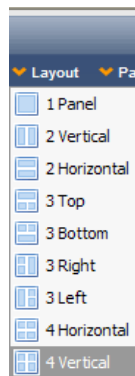
Icon	Label	Description
	Reload Last Level	Reloads the contents of the item that is currently selected
	Return Home	Collapses the expanded hierarchy so that the Database Explorer is displayed as it was when you logged on to DWA
	Collapse Explorer	Collapses the Database Explorer so that the expanded hierarchy is displayed within the left pane
	Expand Explorer	Expands the Database Explorer so that each level of the database hierarchy is displayed in a column in the Database Explorer

## Module display

When you open a module, it opens in its default view in the module space.

You can open up to four modules at the one time.

You can control the way modules are displayed in the module space using the **Layout** menu:



For information on opening modules, click [here](#).



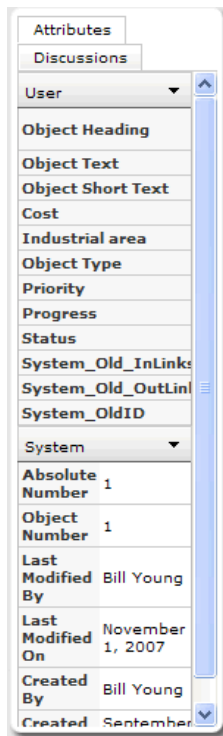
## Details Panel

The Details Panel contains two sections with information about the currently selected item (project, folder, module, and so on). The Details Panel is organized into two separate sections:

- The Attributes tab
- The Discussions tab

### **The Attributes tab**

The **Attributes** tab contains information about the attributes of the current item. The following example shows a typical object's attributes. User attributes are maintained by the user, system attributes are generated and maintained by DOORS.



In this version of DWA, all of an item's attributes are read-only.

### **The Discussions tab**

The **Discussions** tab contains information about the discussions that apply to the current item. To learn more about discussions, [click here](#).



# 4

## Managing modules

What do you want to learn about?

- About favorites

What do you want to do with the module?

- Open a module
- Close a module
- Add a module to your list of favorites

### Open a module

To open a module:

1. In the Database Explorer, navigate to the module.

You must have read access to the module.

Also, if the file is in your favorites or one of your recent items, you can quickly access it there.


2. Either:

- Double-click the module.
- Right-click **Open > Open**.
- Drag the module into the module space.

The module is opened read only in its default view.

### Close a module

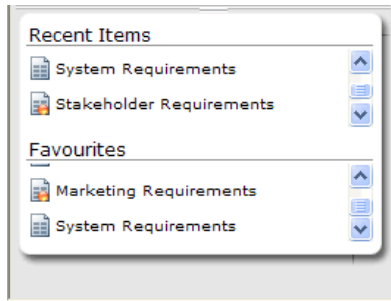
To close a module:

- Click  in the top right corner of the module.

### About favorites

If you use certain modules regularly, you can add them to your favorites list. Instead of navigating through the database hierarchy to access the module, you can open it from your favorites list.

The favorites list is displayed below the Database Explorer:



To open a module in your favorites list, either:

- Double-click it.
- Right-click **Open > Open**.
- Drag it into the module space.

## Add a module to your list of favorites

To add a module to your list of favorites:

1. Select the module in the Database Explorer that you want to add to your **Favorites**.
2. Either:
  - Right-click **Add To Favorites**.
  - Drag the module into the Favorites area.

If the module is open, click **Add Favorite**  on the toolbar.

# 5

## About baselines

What do you want to learn about?

- About baselines

What do you want to do?

- View a baseline

### About baselines

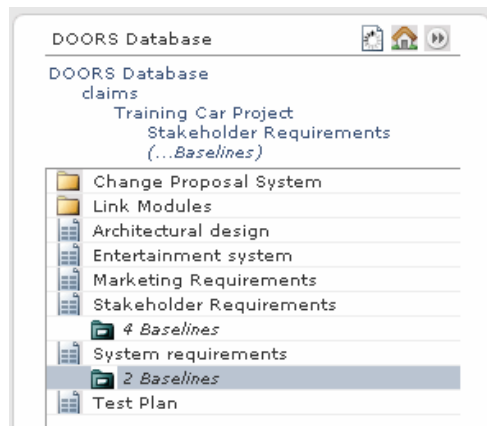
In DOORS, you can create a read-only version of a module called a baseline. When you create a baseline of a module, you create a copy of the module, which no-one can edit.

You can look at baselines in DWA, but you cannot create or delete them.

For more information about baselines, see the DOORS online help.

### View a baseline

In DWA, module baselines are stored in a baseline folder below the module in the Database Explorer, as shown in the following example:



To view a baseline:

1. In the Database Explorer, navigate to the module whose baseline you want to view, and double click on the baseline folder.

The Database Explorer expands to display a list of the baselines you can view.

2. Click the baseline in the Database Explorer to see information about it in the attributes section of the Details Panel, or double-click to open it.

# 6

## Discussions

### What do you want to learn about?

- About discussions


### What do you want to do?

- Create a module discussion
- View a module discussion
- Add a comment to a module discussion
- Close a module discussion
- Reopen a module discussion
- Create an object discussion
- View an object discussion
- Add a comment to an object discussion
- Close an object discussion
- Reopen an object discussion

## About discussions

**Discussions** is a mechanism for reviewers to exchange views about the content of a module or an object within the module.

DWA allows you to maintain running discussions about objects and modules. The discussions are presented to you in the Discussions tab of the Details Panel.

Objects with discussions have a **Discussion icon**  in the discussion column.

You can create, view, modify and close discussions for modules and for objects in modules.

## Create a module discussion

### To create a module discussion:

1. With the module closed, select it in the Database Explorer, select the **Discussions** tab in the Details Panel, then press **New**.

The **New Discussion** dialog box is displayed.

2. Enter a summary and your comment.



3. Click **Save**.

The comment is saved and the discussion created.

## View a module discussion

**To view a module discussion:**

1. With the module closed, select it in the Database Explorer, then select the **Discussions** tab in the Details Panel.

The discussions for the module are displayed. There are **Open discussions**  and **Closed discussions** .



2. Expand the discussion you want to view.

The full discussion is displayed.

## Add a comment to a module discussion

**To add a comment to a module discussion:**

1. With the module closed, select it in the Database Explorer, then select the **Discussions** tab in the Details Panel.

The discussions for the module are displayed. There are **Open discussions**  and **Closed discussions** .

2. Expand the discussion you want to add a comment to.

The full discussion is displayed.

3. Click **New** within the discussion.

The **New Comment** dialog box is displayed.



4. Enter your comment and click **Save**.

The comment is added.

## Close a module discussion

**To close a module discussion:**

1. With the module closed, select it in the Database Explorer, then select the **Discussions** tab in the Details Panel.

The discussions for the module are displayed. There are **Open discussions**  and **Closed discussions** .

2. Expand the Open discussion you want to close.



The full discussion is displayed.

3. Select **Close**.

The **Change Status** dialog box is displayed.

4. Enter your comment and click **Save**.

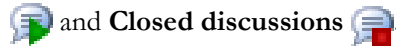
The comment is added and the discussion is closed.

## Reopen a module discussion

**To reopen a module discussion:**

1. With the module closed, select it in the Database Explorer, then select the **Discussions** tab in the Details Panel.

The discussions for the module are displayed. There are **Open discussions**



2. Expand the Closed discussion you want to reopen.

The full discussion is displayed.

3. Select **Open**, and enter a comment.

The **Change Status** dialog box is displayed.

4. Enter your comment and click **Save**.

The comment is added and the discussion is reopened.

## Create an object discussion

1. Select the object in the module, select the **Discussions** tab in the Details Panel, then press **New**.

The **New Discussion** dialog box is displayed.

2. Enter a summary and your comment.



3. Click **Save**.

The comment is saved and the discussion created.

## View an object discussion

**To view an object discussion:**

1. Select the object in the module, then select the **Discussions** tab in the Details Panel.

The discussions for the module are displayed. There are **Open discussions**  and **Closed discussions** .



2. Expand the discussion you want to view.

The full discussion is displayed.

## Add a comment to an object discussion

**To add a comment to an object discussion:**

1. Select the object in the module, then select the **Discussions** tab in the Details Panel.

The discussions for the module are displayed. There are **Open discussions**  and **Closed discussions** .

2. Expand the discussion you want to add a comment to.

The full discussion is displayed.

3. Click **New** within the discussion.

The **New Comment** dialog box is displayed.



4. Enter your comment and click **Save**.

The comment is added.

## Close an object discussion

**To close an object discussion:**

1. Select the object in the module, then select the **Discussions** tab in the Details Panel.

The discussions for the module are displayed. There are **Open discussions**  and **Closed discussions** .

2. Expand the Open discussion you want to close.

The full discussion is displayed.

3. Select **Close**.

The **Change Status** dialog box is displayed.

4. Enter your comment and click **Save**.



The comment is added and the discussion is closed.

## Reopen an object discussion

### To reopen an object discussion:

1. Select the object in the module, then select the **Discussions** tab in the Details Panel.

The discussions for the module are displayed. There are **Open discussions**

 and **Closed discussions** .

2. Expand the Closed discussion you want to reopen.

The full discussion is displayed.

3. Select **Open**, and enter a comment.

The **Change Status** dialog box is displayed.

4. Enter your comment and click **Save**.

The comment is added and the discussion is reopened.



# 7

## Finding text




### What do you want to do?

- Find text in a module
- Go to a particular object

### Find text in a module

You can search an open module for all the objects that contain specific text. For example, you can search for objects that contain the word **accelerate**.

#### To search a module:

1. Open the module you want to search.
2. In the **Find** box, type the text you want to search for.
3. Select **Search Forward** .  
The object containing the first instance of the search text is selected in the module.
4. To search for the next instance, select **Search Forward**  again.
5. If you want to search for previous instances of the search text, select **Search Backward** .

### Go to a particular object

When you have a module open, you can go directly to a particular object in the module if you know its absolute number.

**Note** You can only go to an object in the current view.

#### To go directly to a particular object:

1. In the module window, select **Goto**.
2. Type the absolute number of the object you want to go to and click **Goto**.  
If the object with the specified absolute number is in your current view, it becomes the current object.



# 8

## About links

### What do you want to learn about?

- About links
- About link arrows in a module

### About links

With DOORS, you can **link** together related information. You can follow these links by simply clicking them.

For example, in DOORS you can link a user requirement to the design features that fulfill that requirement. You can also link the design features to the tests that are carried out to verify the design features.

Links give you traceability. You can make sure that what you're building satisfies your user requirements.

You can follow links in both directions. For example, if a test fails, you can find out which requirements are affected by tracing the links from the test back to the design features, and from the design features back to the requirements.



With links, you can also effectively manage change. You can quickly trace the impact of a change to a single piece of data on the rest of your system.



For example, the engineering department tells you that they can't deliver the solar-powered battery you were expecting. You can trace the links from the battery object back to the requirements that depend on it, and forward to the other features of the car that depend on having a solar-powered battery. You can quickly see the full impact of not having a solar-powered battery. You can make an informed decision about whether to just use a conventional battery or whether to invest more money and resources to help deliver a solar-powered battery.

In DWA, you can follow links. You cannot add or delete them.

### About link arrows in a module

Linked objects have **link arrows** in the link column:

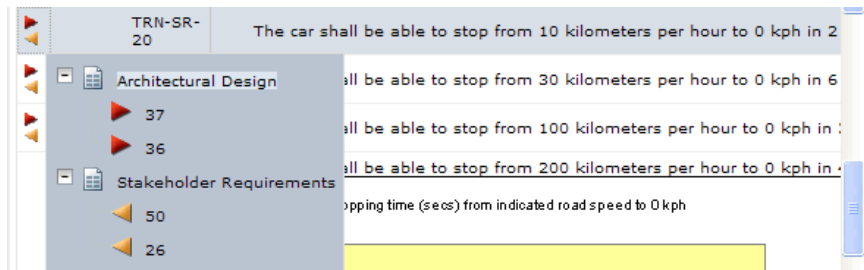
- **Out-links** have red link arrows 
- **In-links** have orange link arrows 

Some module baselines may display link arrows that look like this:  . These arrows signify links to and from modules that are not in the same baseline set definition, and are called **echoed links**. For more information on links in baseline sets, see the DOORS online help.

Click in the link column of an object to see the modules that are linked to the object:



Click the plus (+) sign to expand the list of links in each module:



The numbers of the objects at the other end of the links are displayed.

To go to the linked object, simply select it on the pop-up menu. The module containing the linked object is opened with the linked object selected.



# 9

## Using views

### What do you want to learn about?

- About views
- About current and available views

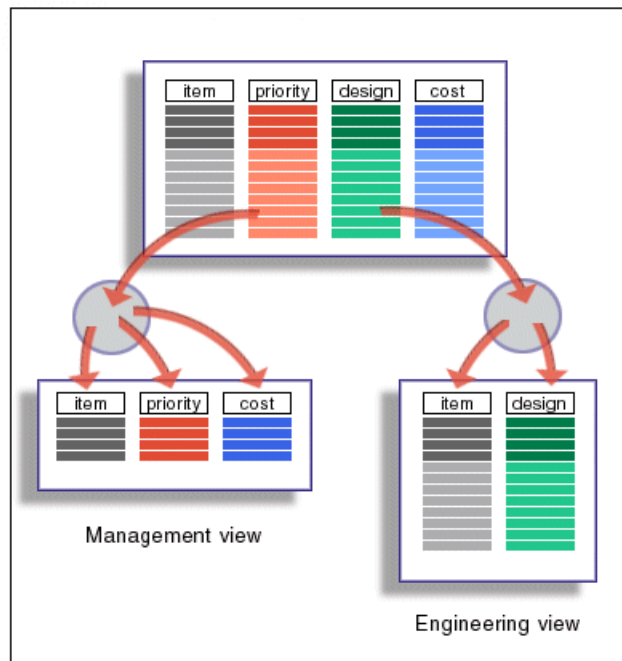
### What do you want to do?

- Change the view

## About views

Different people need to see different information. For example, managers are interested in scheduling and cost information, and engineers are interested in technical design information.

So you can create different **views** of modules for different users. Each view contains a subset of the objects or attributes in the module.



This graphic shows two views of a design module:

- The Management view shows **items**, and their related **priority** and **cost**

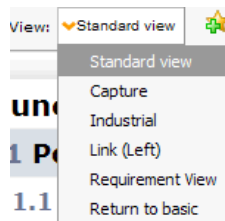
- The Engineering view shows **items** and the related **design** information

With views, you can see exactly what you need without being overwhelmed by too much information. You can filter out the data you don't want to see.

## About current and available views

When you open a module in DWA, it opens in the default view for the module in DOORS. This is the **current view** and it is what's currently displayed on your screen. It's a combination of the columns that you can see, the sort or filter that has been applied to the module in DOORS, and so on.

The names of all the views that have been created for a module - the **available views** - are displayed in the drop-down list on the **View** box. In this example, the current view is **Standard view**, and a number of other views are available:



## Change the view

**To change the view:**

1. Click the drop-down list of views or delete the current view name and type the name of the view you want to display. DWA will filter the view list and display view names that match what you type.
2. Select the view you want to use.

The view is displayed.

This information was developed for products and services offered in the U.S.A. IBM may not offer the products, services, or features discussed in this document in other countries. Consult your local IBM representative for information on the products and services currently available in your area. Any reference to an IBM product, program, or service is not intended to state or imply that only that IBM product, program, or service may be used. Any functionally equivalent product, program, or service that does not infringe any IBM intellectual property right may be used instead. However, it is the user's responsibility to evaluate and verify the operation of any non-IBM product, program, or service.

IBM may have patents or pending patent applications covering subject matter described in this document. The furnishing of this document does not grant you any license to these patents. You can send written license inquiries to:

IBM Director of Licensing  
IBM Corporation  
North Castle Drive  
Armonk, NY 10504-1785  
U.S.A.

For license inquiries regarding double-byte character set (DBCS) information, contact the IBM Intellectual Property Department in your country or send written inquiries to:

IBM World Trade Asia Corporation  
Licensing  
2-31 Roppongi 3-chome, Minato-ku  
Tokyo 106-0032, Japan

**The following paragraph does not apply to the United Kingdom or any other country where such provisions are inconsistent with local law:**

INTERNATIONAL BUSINESS MACHINES CORPORATION PROVIDES THIS PUBLICATION "AS IS" WITHOUT WARRANTY OF ANY KIND, EITHER EXPRESS OR IMPLIED, INCLUDING, BUT NOT LIMITED TO, THE IMPLIED WARRANTIES OF NON-INFRINGEMENT, MERCHANTABILITY OR FITNESS FOR A PARTICULAR PURPOSE.

Some states do not allow disclaimer of express or implied warranties in certain transactions. Therefore, this statement may not apply to you.

This information could include technical inaccuracies or typographical errors. Changes are periodically made to the information herein; these changes will be incorporated in new editions of the publication. IBM may make improvements and/or changes in the product(s) and/or the program(s) described in this publication at any time without notice.

Any references in this information to non-IBM Web sites are provided for convenience only and do not in any manner serve as an endorsement of those Web sites. The materials at those Web sites are not part of the materials for this IBM product and use of those Web sites is at your own risk.

IBM may use or distribute any of the information you supply in any way it believes appropriate without incurring any obligation to you.

Licensees of this program who wish to have information about it for the purpose of enabling: (i) the exchange of information between independently created programs and other programs (including this one) and (ii) the mutual use of the information which has been exchanged, should contact:

Intellectual Property Dept. for Rational Software  
IBM Corporation  
1 Rogers Street  
Cambridge, Massachusetts 02142  
U.S.A.

Such information may be available, subject to appropriate terms and conditions, including in some cases, payment of a fee.

The licensed program described in this document and all licensed material available for it are provided by IBM under terms of the IBM Customer Agreement, IBM International Program License Agreement or any equivalent agreement between us.

Any performance data contained herein was determined in a controlled environment. Therefore, the results obtained in other operating environments may vary significantly. Some measurements may have been made on development-level systems and there is no guarantee that these measurements will be the same on generally available systems. Furthermore, some measurements may have been estimated through extrapolation. Actual results may vary. Users of this document should verify the applicable data for their specific environment.

Information concerning non-IBM products was obtained from the suppliers of those products, their published announcements or other publicly available sources. IBM has not tested those products and cannot confirm the accuracy of

performance, compatibility or any other claims related to non-IBM products. Questions on the capabilities of non-IBM products should be addressed to the suppliers of those products.

This information contains examples of data and reports used in daily business operations. To illustrate them as completely as possible, the examples include the names of individuals, companies, brands, and products. All of these names are fictitious and any similarity to the names and addresses used by an actual business enterprise is entirely coincidental.

If you are viewing this information softcopy, the photographs and color illustrations may not appear.

Additional legal notices are described in the `legal_information.html` file that is included in your software installation.

## Trademarks

IBM, the IBM logo, `ibm.com`, Telelogic, Telelogic DOORS Web Access, and Telelogic DOORS are trademarks or registered trademarks of International Business Machines Corporation in the United States, other countries, or both. These and other IBM trademarked terms are marked on their first occurrence in this information with the appropriate symbol (® or ™), indicating US registered or common law trademarks owned by IBM at the time this information was published. Such trademarks may also be registered or common law trademarks in other countries. A current list of IBM trademarks is available on the Web at [www.ibm.com/legal/copytrade.html](http://www.ibm.com/legal/copytrade.html).

Other company, product or service names may be trademarks or service marks of others.



# Index

## B

baselines  
    understanding, 15  
    viewing, 15

## C

changing views, 28  
closing modules, 13

## D

discussions  
    for modules  
        about, 17  
        adding comments, 18  
        closing, 18  
        creating, 17  
        reopening, 19  
        viewing, 18  
    for objects  
        about, 17  
        adding comments, 20  
        closing, 20  
        creating, 19  
        reopening, 21  
        viewing, 19

## F

favorites  
    adding, 14  
    understanding, 13  
finding text, 23

## G

going directly to an object, 23

## I

in-links, 25

## J

jumping directly to an object, 23

## L

link arrows, 25  
links, 25

## M

modules  
    about baselines, 15  
    about discussions, 17  
    adding comments, 18  
    closing, 13  
    closing discussions, 18  
    creating discussions, 17  
    reopening discussions, 19  
    searching, 23  
    viewing baselines, 15  
    viewing discussions, 18  
moving directly to an object, 23

## O

objects  
    about discussions, 17  
    adding comments, 20  
    closing discussions, 20  
    creating discussions, 19  
    jumping to objects, 23  
    reopening discussions, 21  
    viewing discussions, 19  
out-links, 25

## R

Read User role, 5  
requirements, 1  
Reviewer role, 5  
roles, 5

## S

searching modules, 23

## **V**

### views

changing, 28

understanding, 27