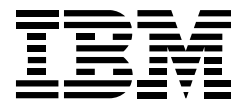




Advanced touchscreen technology
designed for retailers



*IBM 4695 Point-of-Sale
Distributed/Integrated
Touch Terminal*



4695



Highlights

Designed for retailers

The 4695 Touch Terminals provide advanced infrared touch technology plus robust construction and elegant packaging in distributed or integrated configurations. This attractive combination of technology, ruggedness and small footprint is ideal for retail.

Leading touchscreen technology

These large flat-panel touchscreens are ergonomically designed, and can tilt and swivel (on some models) to provide comfortable viewing. The wide viewing angles and quick refresh time of the active matrix display models allow full-motion video for applications such as operator training and marketing messages. All models use proven infrared touch technology that can be used with gloved hands and does not require recalibration.

Versatile, flexible touch technology

If you require a reliable, high-performance POS touch terminal in a small package, the IBM 4695 is an excellent choice. With its advanced design, wide range of options and environmental hardening, you get the ideal touch terminal for many retail environments.

Investment protection with growth opportunity

The new 4695 models secure previous hardware investments by maintaining compatibility with your existing 4695 models and I/O devices. The pluggable processor, multiple memory sockets, multiple I/O ports and a feature card slot provide you with upgrade options as your business grows.

Configuration options

The IBM 4695 is available in both distributed and integrated models. The new integrated models can take advantage of high-speed Ethernet support to implement a thin-client configuration that could result in lower system maintenance costs.

4695 Distributed Touch Terminal

The distributed 4695 models consist of freestanding color touch displays with the capability to attach other POS I/O devices. Model 022 provides a large 307 mm (12.1 in.) passive LCD display and Model 032 provides a 264 mm (10.4 in.) active LCD using Thin-Film Transistor (TFT, or Active Matrix) technology with a wide viewing angle and brighter, sharper image.

The displays are mounted on a pedestal unit that can be fastened to the countertop, for a low profile that takes up minimum counter space. Or they can be fastened to a wall. An optional bidirectional three-track magnetic stripe card reader (MSR) attaches to the side of the touch display for reading credit or debit cards.

A vacuum fluorescent display with two lines of 20 characters can be integrated into the back of the pedestal for easy customer viewing. Or, one of several IBM 2x20 displays can be pole-mounted near the pedestal. Several cash drawer options can also be attached. The displays and cash drawers attach through POS ports at the rear of the pedestal with concealed cable routing.

Environmentally hardened

Designed to withstand the rigors of food service and hospitality, the 4695 includes a molded front cover, infrared touch bezel and LCD protective glass in one seamless component. The hardened-glass LCD screen is scratch-resistant. The unit also tolerates dirt and moisture, and is easy to clean.

Models 022 and 032 attach to the IBM 4694 POS terminal system unit, or an IBM PC or compatible PC system unit. Because of its environmental hardening, the IBM 4694 Model 124 is particularly well suited as a system unit in food service applications. Attach the 4695 Models 022 and 032 to these system units through the IBM 4695 POS Adapter Card II. You can also attach a variety of POS I/O devices, such as printers, cash drawers and displays. (For details, see the IBM 4694 specification sheet.)

Available in ISA format, the POS adapter provides 128KB of nonvolatile memory. This memory is available to applications to retain vital data, such as terminal totals, in the event of a power outage. Up to three 4695 distributed terminals can be attached to a system unit, depending on application support and feature slot availability. System units can be placed under the counter or at another convenient location up to 9 m (30 ft.) from the 4695 terminal.

4695 Integrated Touch Terminal

The integrated 4695 models provide a 307 mm (12.1 in.) touch display with a self-contained, integrated system unit that can accept other I/O devices. Model 322 provides an LCD passive technology, color touch display, while Models 342/N43 provide an active matrix, color touch display.

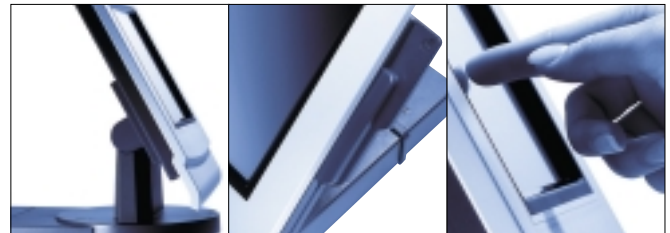
The integrated 4695 models utilize IBM ThinkPad technology for attractive packaging and small footprint. Models 322/342 feature an Intel 200 MHz Pentium MMX pluggable processor, plus standard 16MB memory that is expandable to 128MB. Model N43 features an AMD 300 MHz K6™-2 processor, with 64MB standard memory and an additional 64MB optional memory upgrade.

High-speed 10/100 auto-sensing Ethernet LAN and SVGA support is also included. An optional, bidirectional, three-track magnetic stripe card reader (MSR) attaches to the side.

Available I/O ports include two RS-232 ports, one parallel port, one external CRT port, PC keyboard and mouse ports and four POS ports. One POS port can be used to connect the IBM 7497 Attachment Kit, which supports all IBM POS (including country-specific) I/O devices. The MSR attaches directly to the touchscreen and does not require a separate port.

Available options include an integrated hard drive, an external diskette drive, and either a RS-232 adapter that provides two additional ports or a PCMCIA expansion feature card. This feature card attaches to the system board and provides for the use of two Type I or Type II PCMCIA adapters or one Type III PCMCIA adapter.

A variety of I/O devices, including printers, cash drawers and displays, are available for attachment to the integrated system units. (For details on these I/O devices, see the IBM 4695 Specification Sheet.)



IBM 4695 Point-of-Sale Distributed Touch Terminals at a glance

Standard features	<ul style="list-style-type: none">• Pedestal-mounted, spillproof LCD with infrared touchscreen; back light illumination; tilt and swivel adjustments• Three POS I/O ports (two cash drawers, one customer display)• Choice of system units: IBM 4694 (Model 124 environmentally hardened for food service) or IBM or compatible PCs• Power: 60-watt external universal power supply, sealed for retail environment	
Models	<ul style="list-style-type: none">• Model 022: 307 mm (12.1 in.) color passive technology LCD (800x600)• Model 032: 264 mm (10.4 in.) color active matrix technology LCD (640x480)	
Optional features	<ul style="list-style-type: none">• Bidirectional, three-track magnetic stripe card reader (MSR)• Dual-sided magnetic stripe card reader for JUCC cards• 4695 POS adapter provides for attachment of one distributed terminal to system unit; 1MB VRAM supporting up to 256 colors; 128KB nonvolatile memory; available in ISA format• Cash drawers<ul style="list-style-type: none">– Cash drawer: 475 mm (18.7 in.) wide; media slot; lock: removable tills with fixed or adjustable compartments– Compact cash drawer: 330 mm (13 in.) wide; media slot; lock; vertical or horizontal bill storage in removable-till inserts– Flip-top cash drawer: top cover opens for removable-till access; lock• Integrated Display Option:<ul style="list-style-type: none">– Vacuum Fluorescent Display II: 2x20 characters formed in 10.5 mm (0.4 in.) high, 5x7 dot matrix; viewing distance 2 m (7 ft)• Distributed (Pole-Mounted) Display Options:<ul style="list-style-type: none">– LCD: back-lit; 2x20 characters formed in 8 mm (0.3 in.) high, 5x7 matrix; viewing distance 1.5 m (5 ft); two displays on one pole can show different messages– Vacuum Fluorescent Display: 2x20 characters formed in 11.8 mm (0.5 in.) high, 5x12 matrix; viewing distance 2.3 m (7.5 ft)– Vacuum Fluorescent Display II: same as integrated VFD II above– Character/graphics vacuum fluorescent display: characters formed in 16.5 mm (0.65 in.) high, 8x16 dot matrix; viewing distance 3.4 m (11 ft); 160x36 dot matrix in graphics mode; 24 guidance lights– Shopper Display: one row of 14 mm (0.5 in.) high numerics formed with seven bar segments; six function indicators; viewing distance 2.7 m (9 ft)	
Dimensions	Model 022	Model 032
<i>Width</i>	339 mm (13.3 in.) without MSR	312 mm (12.3 in.) without MSR
<i>Depth</i>	342 mm (13.5 in.)	305 mm (12.0 in.)
<i>Height</i>	206 mm (8.1 in.) (horizontal screen) 365 mm (14.4 in.) (vertical screen)	206 mm (8.1 in.) (horizontal screen) 349 mm (13.7 in.) (vertical screen)
<i>Weight</i>	4.8 kg (10.6 lbs) Note: Magnetic Strip Reader (MSR) adds 25 mm (1 in.) to the width on all models when installed.	4.8 kg (10.6 lbs)
Operating systems	<p><i>IBM provides POS Subsystem (POSS) drivers to support the 4695 on the following operating systems and environments:</i></p> <ul style="list-style-type: none">• DOS 7.0, 2000• Microsoft® Windows® 95, 98• Microsoft Windows 3.1, 3.11• Microsoft Windows NT 4.0®• OS/2® Warp 4.0• OLE for Point-of-Sale (OPOS) 1.4.0• SCO/UNIX (Models 022/042) – POSS drivers available through SCO/UNIX <p>Note: IBM POSS drivers for the 4695 can be downloaded from the IBM Retail Store Solutions Web site at www.ibm.com/solutions/retail</p>	
Limited Warranty¹	One year, on-site	

IBM 4695 Point-of-Sale Integrated Touch Terminals at a glance

Standard features

- Processor: Intel® 200 Mhz Pentium® MMX (pluggable) (Models 322/342); AMD 300 MHz K6™-2 (Model N43)
- Memory: two DIMM sockets with 16MB standard, expandable to 128MB (Models 322/342); two DIMM sockets with 64MB standard, expandable to 128MB (Model N43)
- 128KB nonvolatile memory; 256KB level 2 cache
- LAN: Integrated 10/100 autosensing PCI Ethernet
- Ports:
 - two RS-232 serial
 - one parallel
 - external CRT (SVGA)
 - PC keyboard and mouse
 - two RS-485 POS I/O
 - two cash drawer ports
- Spillproof LCD with infrared touchscreen; back light; tilt adjustment PCI video with 2MB of VRAM capable of up to 16.7 M colors
- Windows NT Workstation 4.0 preloaded on 3.2GB or larger HDD (Model N43 only)

Models

- Model 322: 307 mm (12.1 in.) 16.7 M color passive technology LCD (800x600)
- Model 342: 307 mm (12.1 in.) 16.7 M color active matrix LCD (800x600)
- Model N43: 307 mm (12.1 in.) 16.7 M color active matrix LCD (800x600)

Optional features

- All I/O devices listed under the Distributed table plus the following:
- Enhanced alphanumeric keyboard
- 1.44MB external diskette drive
- 3.2GB or larger HDD (Models 322/342)
- RS-232 adapter; provides two additional RS-232 ports
- PCMCIA expansion feature card for system board; accepts two Type I or II adapters or one Type III adapter (exclusive with the RS-232 adapter)
- Optional keylock

Dimensions

Models 322/342/N43

Width	339 mm (13.3 in.) without MSR
Depth	330 mm (13.0 in.)
Height	310 mm (12.2 in.)
Weight	5.1 kg (11.2 lbs)

Note: Magnetic Strip Reader (MSR) adds 25 mm (1 in.) to the width on all models when installed.

Operating systems

IBM provides POS Subsystem (POSS) drivers to support the 4695 on the following operating systems and environments:

- DOS 7.0, 2000
 - Microsoft Windows 95, 98
 - Microsoft Windows 3.1, 3.11
 - Microsoft Windows NT 4.0
 - OS/2 Warp 4.0
 - OLE for Point-of-Sale (OPOS) 1.4.0
 - SCO/UNIX (Models 322/342) – POSS drivers available through SCO/UNIX
- Note: IBM POSS drivers for the 4695 can be downloaded from the IBM Retail Store Solutions Web site at www.ibm.com/solutions/retail

Limited Warranty¹ One year, on-site



For more information

To learn more about the IBM 4695 POS Touch Terminals, please contact your IBM representative or call IBM Direct at 1 800 IBM-CALL (1 800 426-2255) or (770) 863-1000 outside the U.S. and Canada.

Visit our Web site

<http://www.ibm.com/solutions/retail>

© International Business Machines Corporation 1999

IBM Corporation
Department C6PA
5601 Six Forks Road
Raleigh, NC 27609

Printed in the United States of America
September 1999
All Rights Reserved

References in this publication to IBM products or services do not imply that IBM intends to make them available in all countries in which IBM operates. Copying or downloading the images contained in this document is expressly prohibited without the written consent of IBM.

IBM will continue to enhance products and services as new technologies emerge. Therefore, IBM reserves the right to alter specifications and other product information without prior notice. Please contact your IBM marketing representative or an authorized reseller for information on specific standard configuration and options.

IBM assumes no responsibility of liability for any use of the information contained herein. Nothing in this document shall operate as an express or implied license or indemnity under the intellectual property rights of IBM or third parties. No warranties of any kind including but not limited to the implied warranties of merchantability or fitness for a particular purpose are offered in this document.

IBM, ThinkPad and OS/2 are trademarks of International Business Machines Corporation in the United States and/or other countries.

Intel and MMX are trademarks of Intel corporation in the United States and/or other countries.

Microsoft, Windows, Windows NT and the Windows logo are trademarks or registered trademarks of Microsoft Corporation.

AMD K6-2 is a trademark of AMD Corporation in the United States and/or other countries.

Other company, product and service names may be trademarks or service marks of others.

1 For a copy of the terms and conditions of IBM's Statement of Limited Warranty, please contact your IBM representative or authorized reseller.



Printed on recycled paper.