



StoreFlow Point-of-Sale (POS) Applications

Highlights

Multiple store formats are supported by a single application for grocery stores, department stores, speciality stores and hypermarkets—designed for retailers

Platform independence for the retailer—StoreFlow® POS applications are available for DOS and Windows NT® and support POS hardware devices from multiple vendors

Proven solution that is installed in many different retail stores in Europe, Africa, and Latin America

A scalable solution for major retailers with both large and small stores

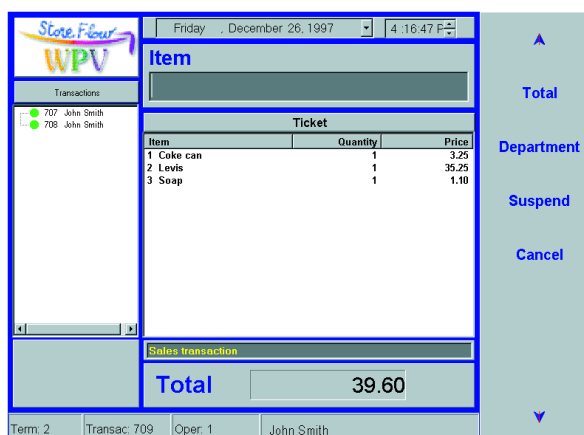
The solution

- Developed on the basis of recognised standards, the StoreFlow applications' function is platform independent and provides choices for POS hardware and operating system.
- The StoreFlow client/server architecture allows the server to be in-store or remote and to support one or multiple stores.
- StoreFlow applications are Year 2000 ready.
- StoreFlow applications separate translatable text from application code, simplifying translation and adaptation to the retailers' needs. It is currently available in English, Spanish, French and Portuguese.
- The StoreFlow POS application for DOS uses TNT DOS-Extender™ from Phar Lap Software to break down DOS barriers with multitasking and extended memory support.

- The StoreFlow POS application for NT supports the OPOS standards and will run on virtually any OPOS-compliant hardware platform.
- The StoreFlow POS application for NT provides both touch and keyboard input as the user interface.
- Tills with DOS, Windows®, and IBM 4690 Operating System can be deployed together in a store with transaction data integrated on the server.

The POS functions

- Basic POS operations such as sales/returns/payments/suspend/retrieve transactions, loans/withdrawals, training mode, and price lookup
- Multiple operating modes such as Cashier, Salesperson and Operator
- Comprehensive security system based on operator profiles and till operations
- Sales by item code or one of several industry bar code symbols such as EAN or UPC
- Capture by size, colour and design
- Designed for use in Europe and Latin America, with support for multiple currency and value added tax (VAT)
- Inventory capture
- Customer identification by code
- Special offers and promotions, general discounts
- Retailer definition of sales documents, tender types, delivery options, till configuration and operation
- Linkage to StoreFlow Sales Management





StoreFlow Application at a glance

Description	A comprehensive open retail solution for both large and small stores.
POS hardware supported	<ul style="list-style-type: none"> • IBM 4694 and IBM SureOne™ Point-of-Sale Terminals • IBM 4695 Touch Terminal (POS application for NT) • DOS based point-of-sale hardware such as SNI Beetle 50/60 and NCR 7450 (POS application for DOS) • OPOS drivers compliant hardware (POS application for NT) • All POS tills require a local disk • Fiscal requirements in some countries may limit hardware choices
Networks supported	Token Ring Ethernet
Server platforms supported	Windows NT 4.0 AIX® 4.1 or later or other UNIX® variants
Client platforms supported	Windows 95 Windows NT 4.0
POS platforms supported	MS-DOS 6.22 or PC DOS 7.0 Windows NT 4.0 IBM 4690 Operating System (coexistence of controller and tills)

© International Business Machines Corporation 1998

IBM Corporation
Department C6PA
5601 Six Forks Road,
Raleigh, NC 27609

Printed in the United States of America
9-98
All Rights Reserved

References in this publication to IBM products or services do not imply that IBM intends to make them available in all countries in which IBM operates.

IBM will continue to enhance products and services as new technologies emerge. Therefore, IBM reserves the right to alter specifications and other product information without prior notice. Please contact your IBM marketing representative or an authorised dealer for information on specific standard configurations and options.

IBM assumes no responsibility of liability for any use of the information contained herein. Nothing in this document shall operate as an express or implied license or indemnity under the intellectual property rights of IBM or third parties. No warranties of any kind, including but not limited to the implied warranties of merchantability or fitness for a particular purpose are offered in this document.

IBM and SureOne are trademarks of International Business Machines Corporation in the United States and/or other countries.

Microsoft, Windows, Windows NT, and the Windows logo are trademarks or registered trademarks of Microsoft Corporation.

UNIX is a registered trademark in the United States and/or other countries licensed exclusively through X/Open Company Limited.

StoreFlow is a registered trademark of Informatica El Corte Ingles (IECI) licensed to IBM.

Other company, product, and service names may be trademarks or service marks of others.



Printed on recycled paper

StoreFlow POS application for DOS is using:

- ANSI C as a programming language and BTree based file system
- TCP/IP as a communication protocol
- TNT DOS-Extender from Phar Lap Software for multitasking and extended memory support

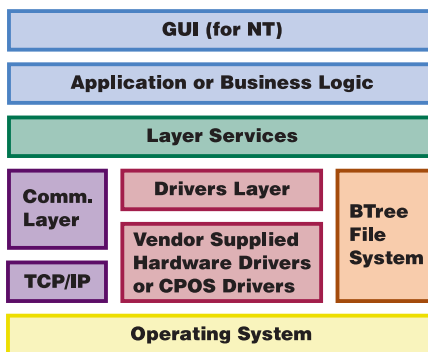
StoreFlow POS application for NT is using:

- ANSI C as a programming language and BTree based file system
- TCP/IP as a communication protocol
- Graphical User Interface (GUI) in Visual Basic
- Windows NT operating system

For more information

To find out more about StoreFlow and other IBM Point-of-Sale applications and products:

- Contact your IBM representative.
- Access the IBM Retail Store Solutions Home Page at:
www.ibm.com/solutions/retail



StoreFlow POS Application Structure