

A comprehensive set of functions designed to meet retailers' needs



StoreFlow Sales Management

Highlights

Multiple store formats are supported by a single application for grocery stores, department stores, speciality stores and hypermarkets—designed for retailers

Server flexibility provides the retailer a central point of control for managing the business—with real time consolidation and availability of sales information

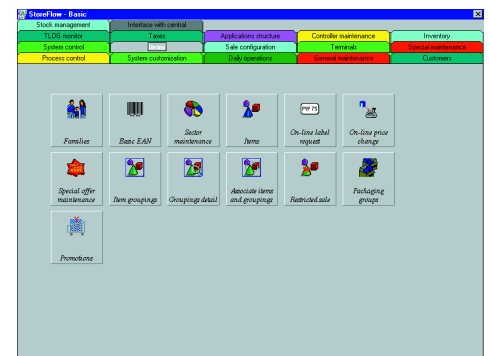
Platform independence for the retailer:

- **Windows NT® and AIX® and other UNIX® variants for the StoreFlow® server**
- **Windows® at the StoreFlow client (back office client)**
- **A selection of platforms for the Point-of-Sale (POS) applications including StoreFlow POS for DOS and Windows NT**
- **Coexistence of an IBM 4690 Operating System (controller and tills) with the IBM 4680-4690 General Sales Application**

A scalable solution for major retailers with both large and small stores

The solution

- StoreFlow Sales Management consists of two logical components:
 - 1) The StoreFlow server provides controls for management of the data, the network, and the communication gateway to the enterprise. It is composed of basic modules and optional modules that provide such functions as connection and data integration of an IBM 4690 Operating System subsystem, credit and EFT interfaces for X.25/ISO 8583 connections and a generic EFT interface.
 - 2) The StoreFlow client provides the back office and in-store functionality. This component consists of several modules including price file management, cash management, customer management, employee management, utilities and reports.
- The StoreFlow POS component provides the till functionality. Refer to the StoreFlow Point-of-Sale (POS) Applications technical specification sheet for more details.
- The StoreFlow client/server architecture allows the server to be in-store or remote and to support one or multiple stores providing a multitude of configuration possibilities.
- Logical components are connected by a TCP/IP backbone which allows other nodes and machines to be easily added to the backbone.



StoreFlow Sales Management—Item Maintenance

- To ensure platform independence and data portability, the StoreFlow application suite is designed to use any ODBC-compliant relational data base.
- The StoreFlow applications separate translatable text from application code, simplifying translation and adaptation to the retailers needs. It is currently available in English, Spanish, French and Portuguese.
- Graphical data presentation provides the benefits of faster and easier analysis of data and therefore better and faster decision making.
- Connection of an IBM POS system (controller and tills) running the IBM 4690 Operating System and the IBM 4680-4690 General Sales Application, provides additional alternatives for retailers to protect their investment in hardware and software.
- StoreFlow applications are Year 2000 ready.



StoreFlow Application at a glance

Description	A comprehensive open retail solution for both large and small stores.
POS hardware supported	<ul style="list-style-type: none"> • IBM 4694 and IBM SureOne™ Point-of-Sale Terminals • IBM 4695 Touch Terminal (POS application for NT) • DOS- based point-of-sale hardware such as SNI Beetle 50/60 and NCR 7450 (POS application for DOS) • OPOS drivers compliant hardware (POS application for NT) • All POS tills require a local disk • Fiscal requirements in some countries may limit hardware choices
Networks supported	Token Ring Ethernet
Server platforms supported	Windows NT 4.0 AIX 4.1 or later or other UNIX variants
Client platforms supported	Windows 95 Windows NT 4.0
POS platforms supported	MS-DOS 6.22 or PC DOS 7.0 Windows NT 4.0 IBM 4690 Operating System (coexistence of controller and tills)

© International Business Machines Corporation 1998

IBM Corporation
Department C6PA
5601 Six Forks Road,
Raleigh, NC 27609

Printed in the United States of America
9-98
All Rights Reserved

References in this publication to IBM products or services do not imply that IBM intends to make them available in all countries in which IBM operates.

IBM will continue to enhance products and services as new technologies emerge. Therefore, IBM reserves the right to alter specifications and other product information without prior notice. Please contact your IBM marketing representative or an authorised dealer for information on specific standard configurations and options.

IBM assumes no responsibility of liability for any use of the information contained herein. Nothing in this document shall operate as an express or implied license or indemnity under the intellectual property rights of IBM or third parties. No warranties of any kind, including but not limited to the implied warranties of merchantability or fitness for a particular purpose are offered in this document.

AIX and IBM are trademarks of International Business Machines Corporation in the United States and/or other countries.

Microsoft, Windows, Windows NT, and the Windows logo are trademarks or registered trademarks of Microsoft Corporation.

UNIX is a registered trademark in the United States and/or other countries licensed exclusively through X/Open Company Limited.

StoreFlow is a registered trademark of Informatica El Corte Ingles (IECI) licensed to IBM.

Other company, product, and service names may be trademarks or service marks of others.



Printed on recycled paper

StoreFlow Sales Management functions

Basic

- Personalisation/customisation configuration and maintenance
- Sales control and item maintenance
- Promotion maintenance
- Access/process control (security)
- Daily reports
- Backups
- TLOG and electronic journal monitoring
- Hard-totals inquiry
- Customer maintenance
- Employee maintenance
- Negative lists for credit

Administrative

- Sales reporting by physical/logical groupings
- Plan versus actual sales process
- Graphical sales reporting
- Cash count/loans/withdrawals

Merchandise/Stock

- Manages supplier data
- Manages order generation
- Manages merchandise receiving
- Facilitates stocktaking, inventory tallying, and stock updating
- Reports and statistics

Scales

- Maintains scales data
- Performs transaction analysis, purchase breakdown and summary
- Manages missing items

Utilities

- System control (spy)
- Inquiry generator
- Security alert control

For more information

To find out more about StoreFlow and other IBM Point-of-Sale applications and products:

- Contact your IBM representative.
- Access the IBM Retail Store Solutions Home Page at:
www.ibm.com/solutions/retail