

IBM Smart Archive

Vision and Strategy

Ser Yeap Tan
Regional Technical Manager
Information Management
IBM Software Group Asean





Today's Agenda

- **The Imperative to Build a Smarter Archive Strategy**
 - Information Explosion
 - Information and Infrastructure Chaos
 - Archiving is No Longer an Option
- **IBM Smart Archive Strategy**
- **Existing and New Solutions Being Announced**
- **Clients who support the IBM Smart Archive Approach**
- **Why IBM**





Growth for People and Databases - Similarities

- People: **Without a proper diet and regular exercise routine, people tend to perform more slowly.**
- Databases: **Without maintaining capacity controls on your database, its processing slows down.**

- People: **Weight gain requires people to invest in a new wardrobe.**
- Databases: **Database growth requires organizations to purchase new storage.**

- People: **Gaining weight can lead to health risks.**
- Databases: **Increasing in size can leads to Discovery and Compliance risks.**

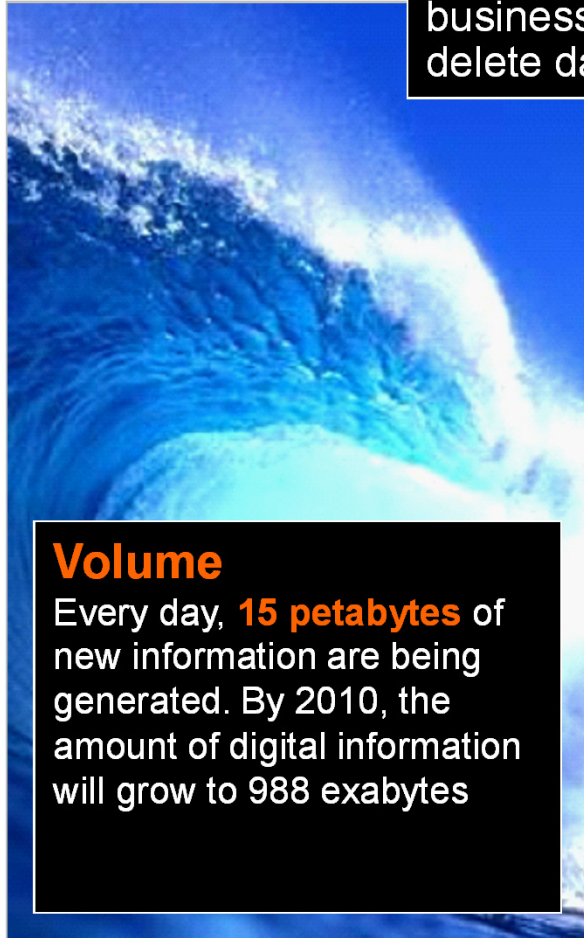




Information Explosion

Information Week Survey:

70% say Regulations drive up storage demands, businesses realizing they **must** classify, manage, delete data - not just keep adding storage



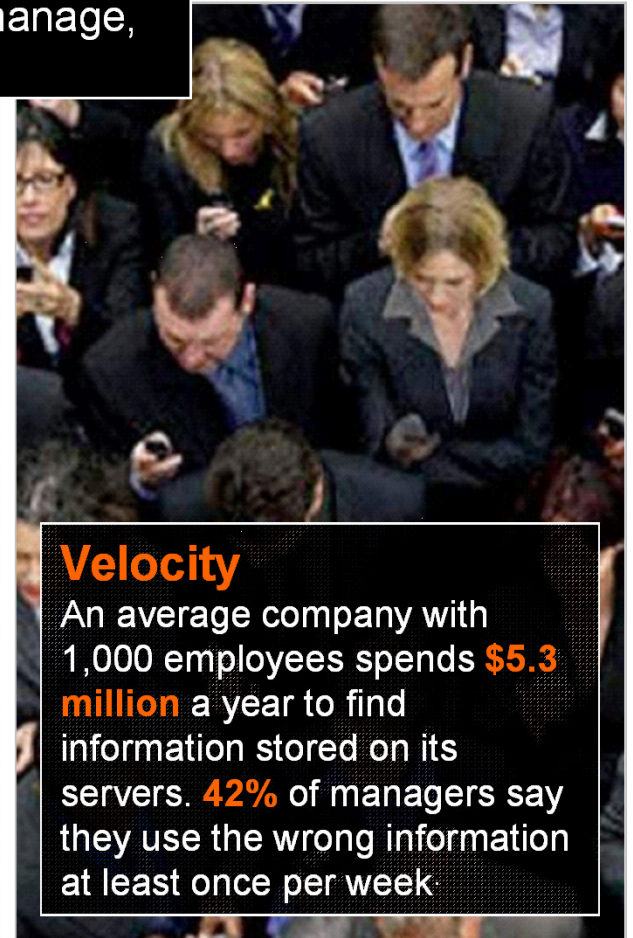
Volume

Every day, **15 petabytes** of new information are being generated. By 2010, the amount of digital information will grow to 988 exabytes



Variety

80% of new data growth is unstructured content, generated largely by email, with increasing contribution by documents, images, and video and audio.



Velocity

An average company with 1,000 employees spends **\$5.3 million** a year to find information stored on its servers. **42%** of managers say they use the wrong information at least once per week





**Valued information is buried beneath too much unnecessary information
(over-retained, duplicated, irrelevant)**

**The keep
everything
forever model
has failed**

**No information visibility:
to unlock what, why,
where in a trusted
accurate manner**

**Runaway storage and
infrastructure costs,
with power, space and
budget challenges**

**Inability to produce
critical information
under punitive scenarios
and deadlines**



No Longer an Option ... Archiving is Now a **Mandate** ... Requiring a Smarter Approach Beyond Point Solution Limitations and Costs

I need to understand what I have and why ... to make it easier to manage, archive, trust and leverage

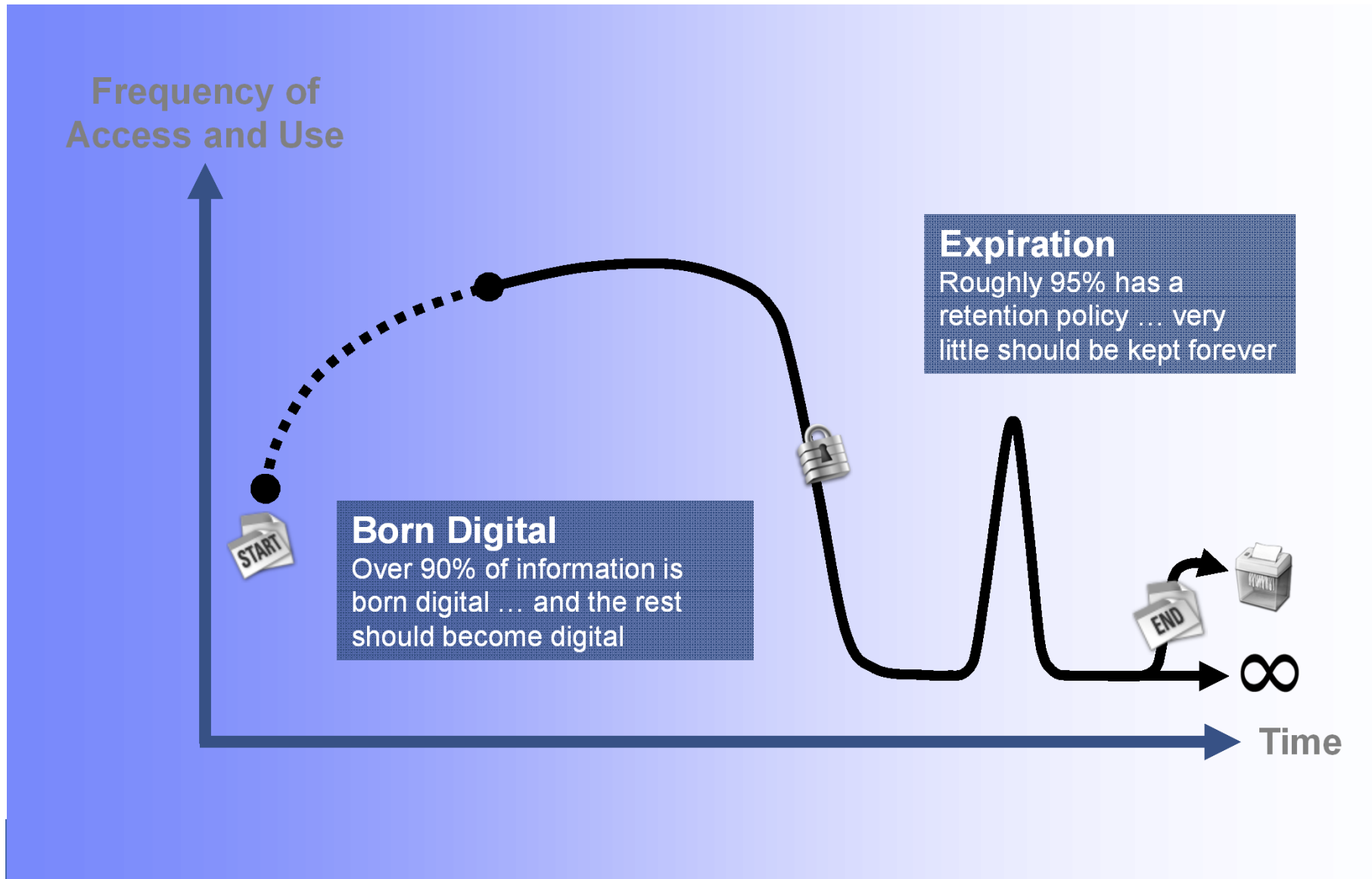
I need to reduce my costs, decrease complexity while increasing flexibility

I still need to comply, govern and produce information ... and I need better overall protection





Information Has a Lifespan Requiring Disposition





A Global Insurer's Perspective ... Information Rabbits

User controlled information proliferates faster than



SOLVED
Reduced Email
Storage by
80%



Original Email
and
Attachment

Forwarded,
copied and
stored by users
on average **12**
times



Backed-up multiple
times (daily, weekly,
monthly) to create as
many as **121** copies ...
not indexed or
searchable



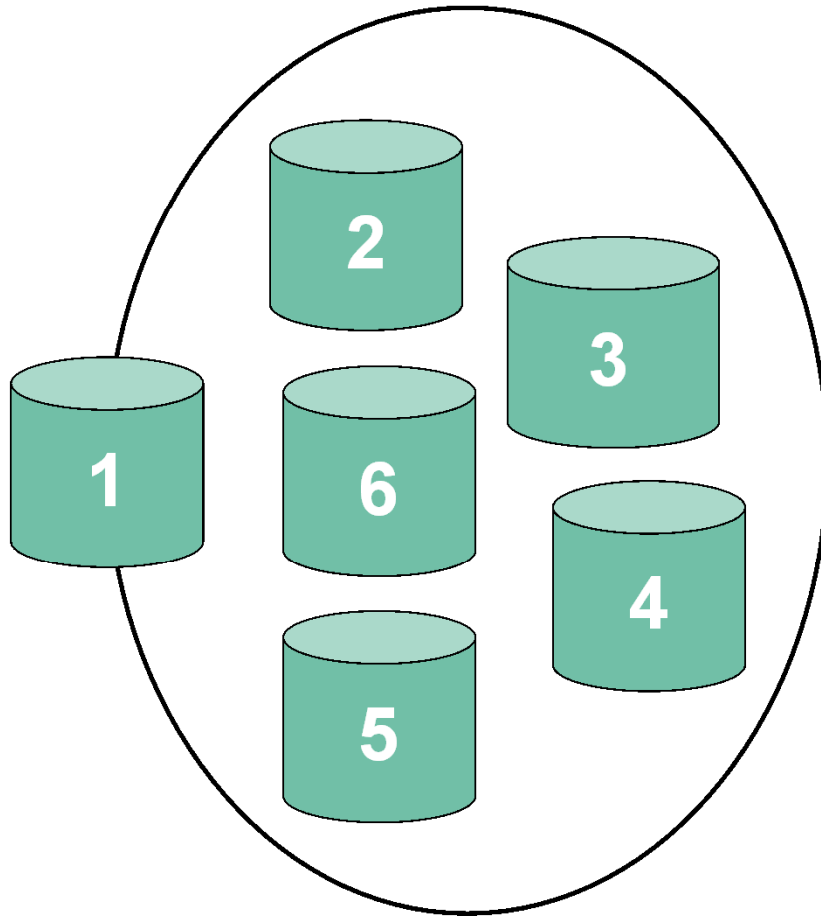
- Slows down production systems
- Increases storage and eDiscovery costs
- Creates litigation risks

- Not adequate for archiving or eDiscovery
- Longer backup and restore times
- Increases power and space requirements
- Significantly magnifies legal risks and costs
- Propagates "keep everything forever" models





Database Multiplier Effect



Production	200 GB
Backup	200
Disaster Recovery	200
Development	200
Test	200
Quality Control	200
Total Size	1200 GB



It Does the Magic To Reduce Costs





Today's Agenda

- **The Imperative to Build a Smarter Planet**
- **The Imperative to Build a Smarter Archive Strategy**
 - **Information Explosion**
 - **Information and Infrastructure Chaos**
 - **Archiving is No Longer an Option**
- **IBM Smart Archive Strategy**
- **Existing and New Solutions Being Announced**
- **Clients who support the IBM Smart Archive Approach**
- **Why IBM**





Bringing Total IBM Value to Our Archiving Clients

Optimizing The Archiving Process and Infrastructure

Uncontrolled
Data and Content
Poor Meta Data

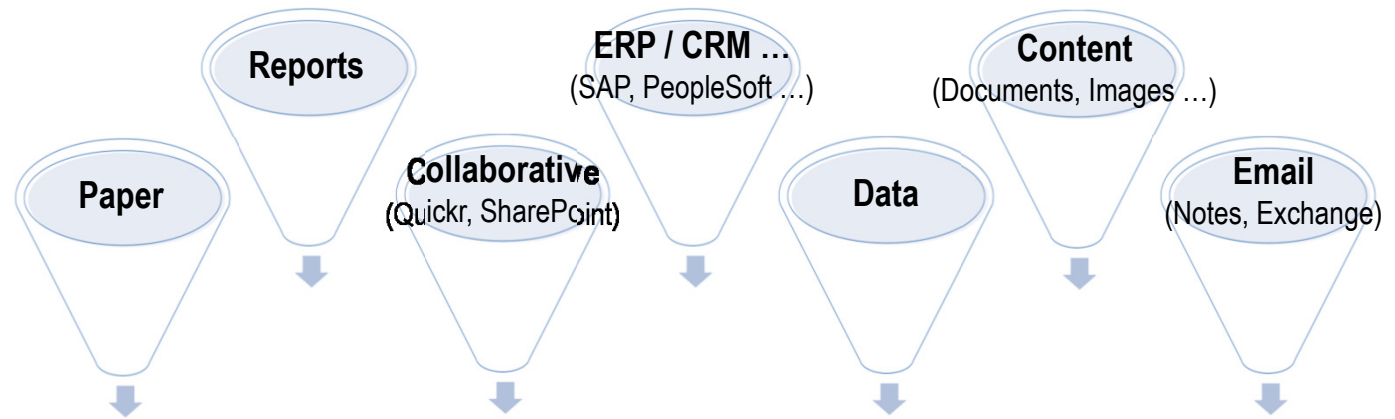
Organized / Retained
Unified Collection and Classification
Flexible and Secure Infrastructure
Unified Retention and Protection

Optimized eDiscovery
Integrated Compliance
Records Management
Data and Content Analytics





IBM Smart Archive Strategy



Optimized and Unified Assessment, Collection and Classification

Value Added Services

- Optimization Services
- System Services
- Managed Services
- Reference Architecture
- Information Governance

**Flexible and Secure Infrastructure with
Unified Retention and Protection**

On Premise
(Custom Config)



Appliance
(Pre-Config)



As A Service
(SaaS, Multiple Options)

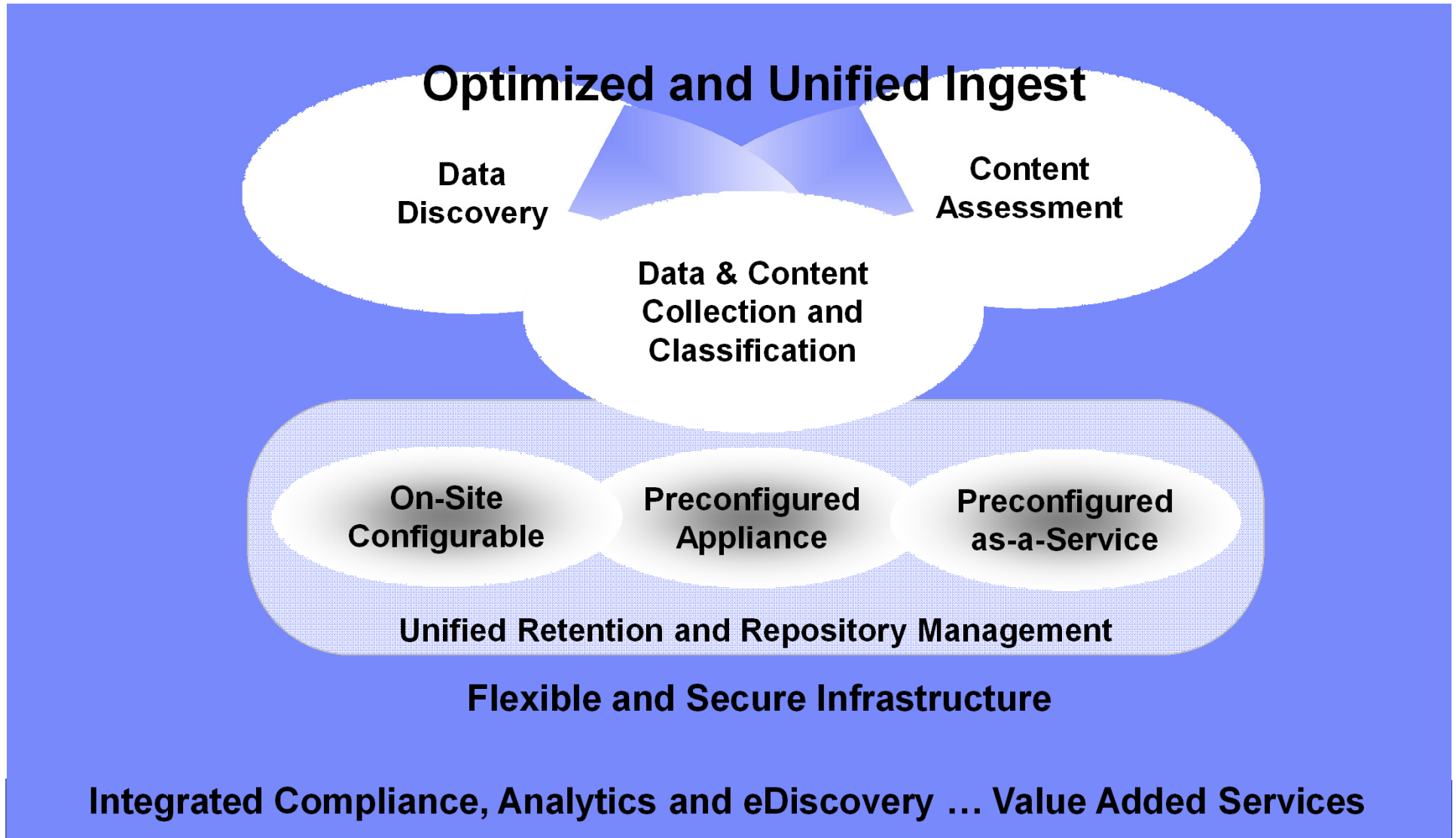


**Cloud Ready Archive
Storage with
Optional ECM**

Integrated Compliance, Records Management, Analytics and eDiscovery



Being Smart Doesn't Mean Being Complicated





Being Smart Means Saving Money and Optimizing Your Infrastructure

An independent study shows \$35.6M of storage savings based on principles of IBM's Smart Archive Strategy

Using Optim, Safeco reduced monthly CPU usage by 20 to 25 percent and lowered IT costs to business units

A large commercial bank is realizing a \$36M ROI by not printing digital born content and using IBM ECM to manage it

Germany Insurance company Deutscher Ring reduces processing costs by one third and improves SAP software response times 40%

"We are capable of accomplishing in days what the defendant didn't accomplish in two years"

*Michele Martin, Counsel,
Smith, Gambrell & Russell,
LLP*

National Library of Netherlands saves an estimated \$5M per year by avoiding manual cataloging and storing

Realize an estimated TCO savings of up to 40% by leveraging GTS managed services for Information Protection Services

A major automotive manufacturer reduces email storage by 50% while enabling rapid search and analysis of e-mails for legal discovery

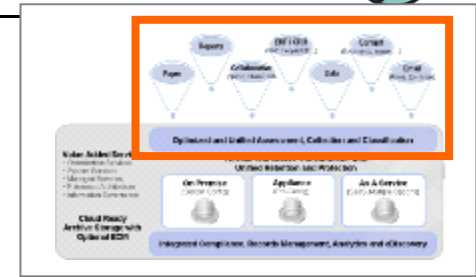
A global manufacturing company archives 30,000 emails a day into IBM DR550 storage system to address a 10 year retention mandate





*Exactly where is your information ... how do you value it?
How do you know what to archive beyond the active and inactive paradigm?*

Bloated Production Systems with Inefficient Storage



Content In The Wild



Lost, Duplicate and Obsolete Data

Ability to Discover, Assess and Decide What Information to Archive, Trust and Leverage

Decommission Unnecessary Information and Systems

Determine Valued, High-Risk and Compliant Information

Unified Collection and Classification

Enhance with Trusted Meta Data

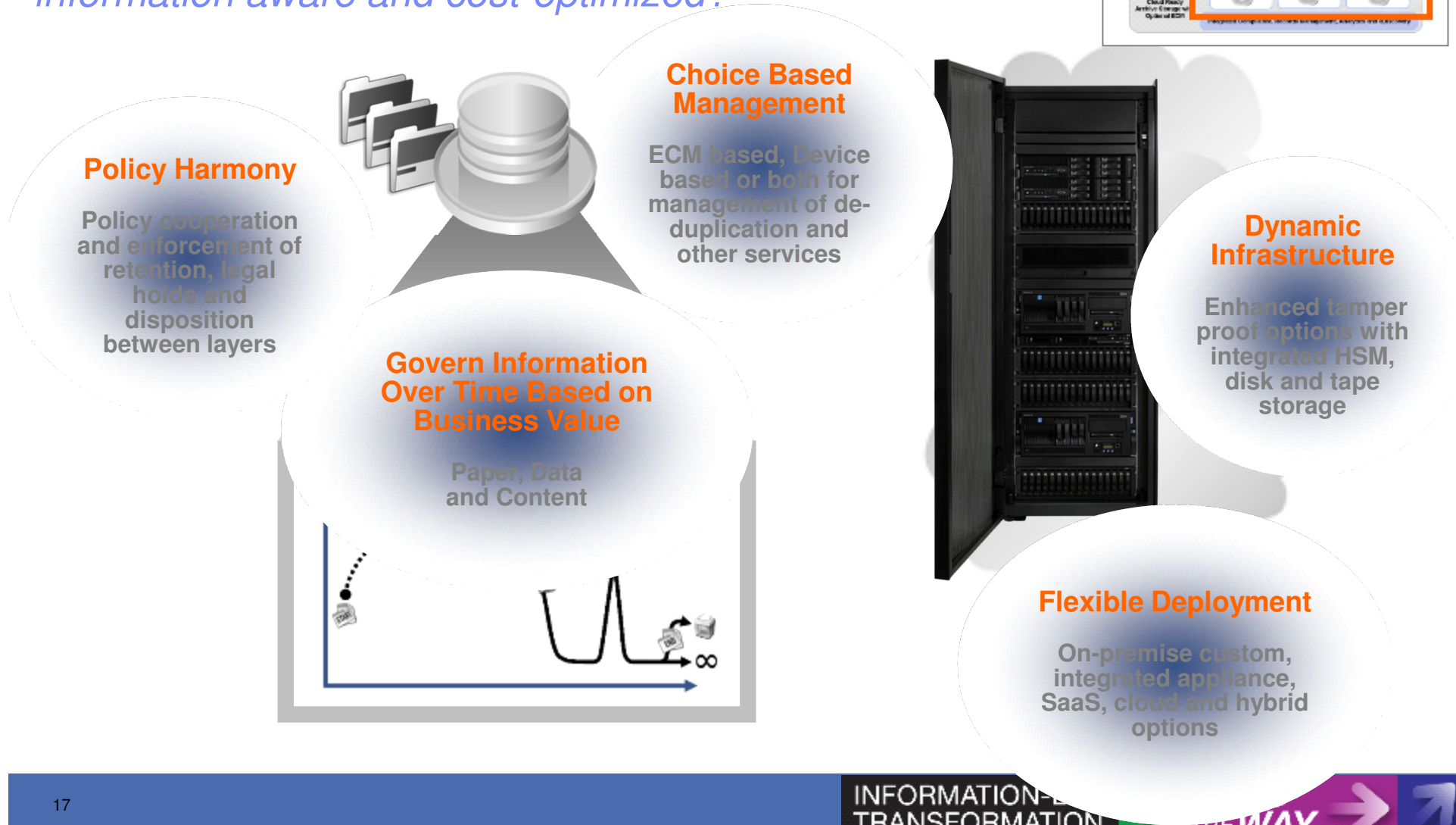
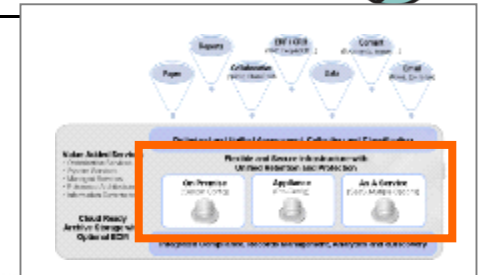
Unified data and content technologies and policies for information management and archiving

Manage and archive with trusted meta data by leveraging task routing and Master Data Management





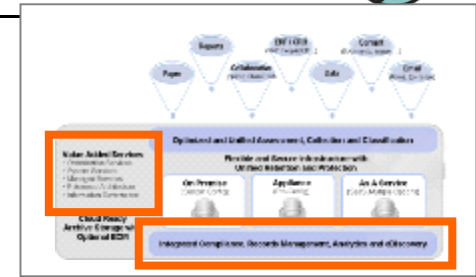
*How do you manage information over its lifespan?
Is your infrastructure simplified, flexible, adaptable,
information aware and cost-optimized?*





Are you enabling Compliance and Governance in a consistent, defensible and cost effective manner?

Is everything secure, protected, optimized and auditable?



Business Analytics and Optimization

Policy development, analytics and optimization services

Archive and Storage Services

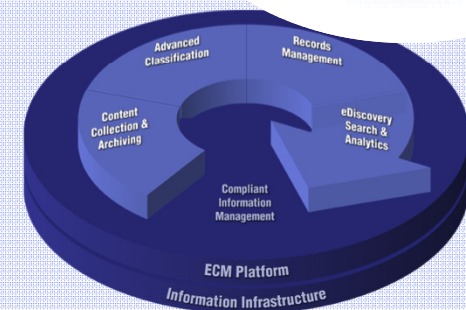
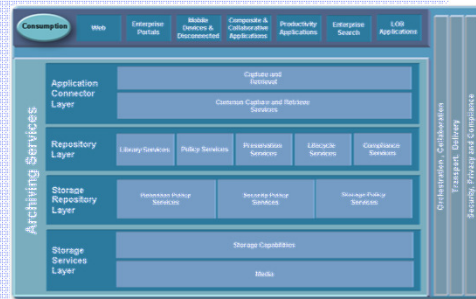
Complete system services from assessment through optimization with Reference Architecture

Managed Services

Email protection, availability and disaster recovery

Compliant Information Management

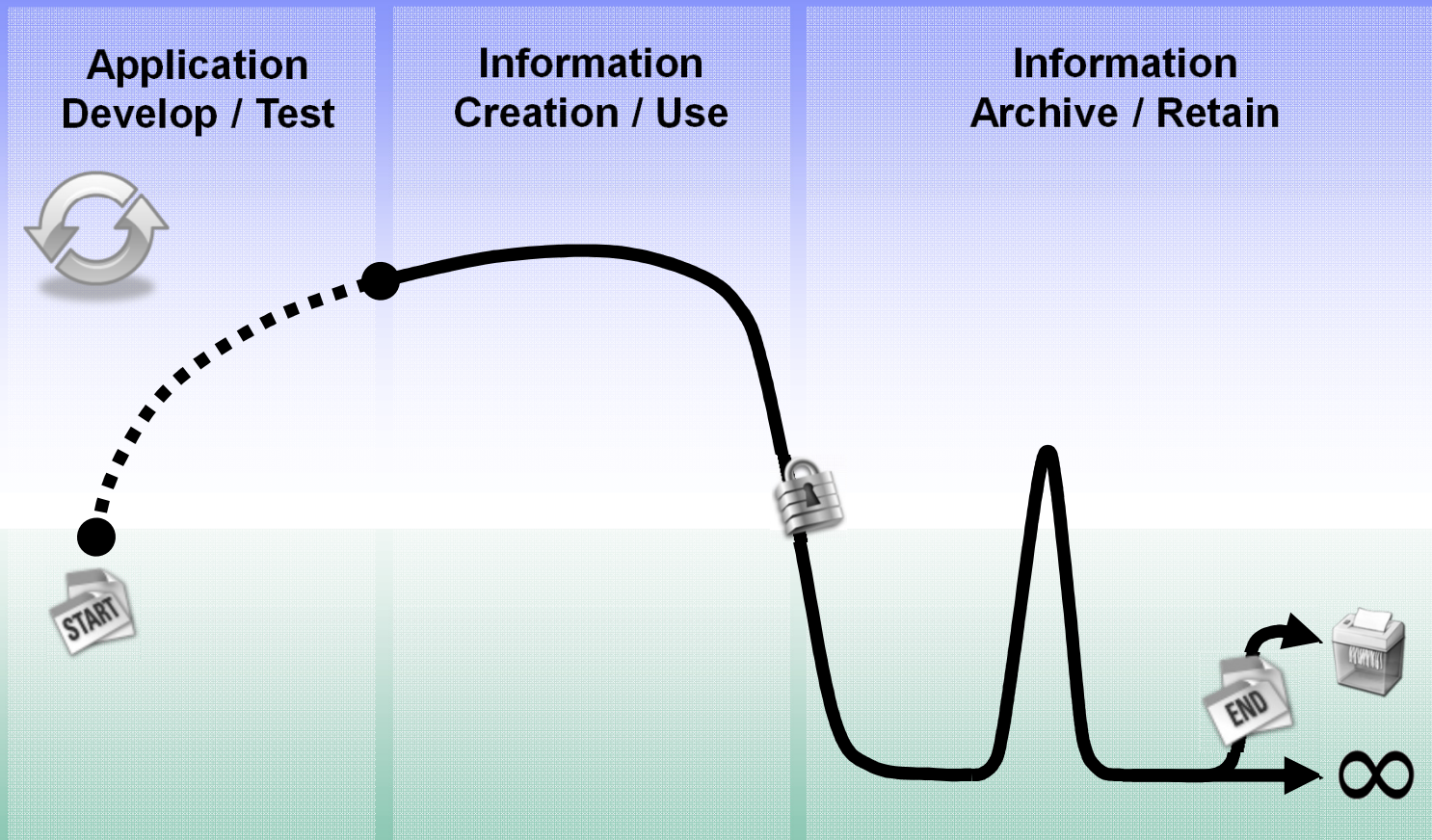
Integrated records management and eDiscovery solutions





Start to End ... The Business Value of Information Changes Over Time

Information Value to Business



Information Infrastructure



Business and IT Must Work Together To Optimize Infrastructure

Information Value and Obligations

Business need, relevance and usage combined with compliance and legal obligations determine how long information must be retained and governed

Optimize storage infrastructure based on business context of usage, not just frequency of access throughout the lifespan



Information Infrastructure





Beyond Frequency of Access

Key Concepts To Optimize Information and Infrastructure Layers

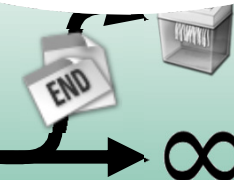
Information Value and Obligations

Decommission unnecessary information to optimize production systems and reduce storage costs

Leverage information layer trusted meta data, classification and analytics within infrastructure to optimize retrieval and reduce complexity

Enforce retention to reduce costs and legal risks ... leverage trusted meta data and analytics to optimize eDiscovery

Decommission and archive outdated applications and test data to reduce costs

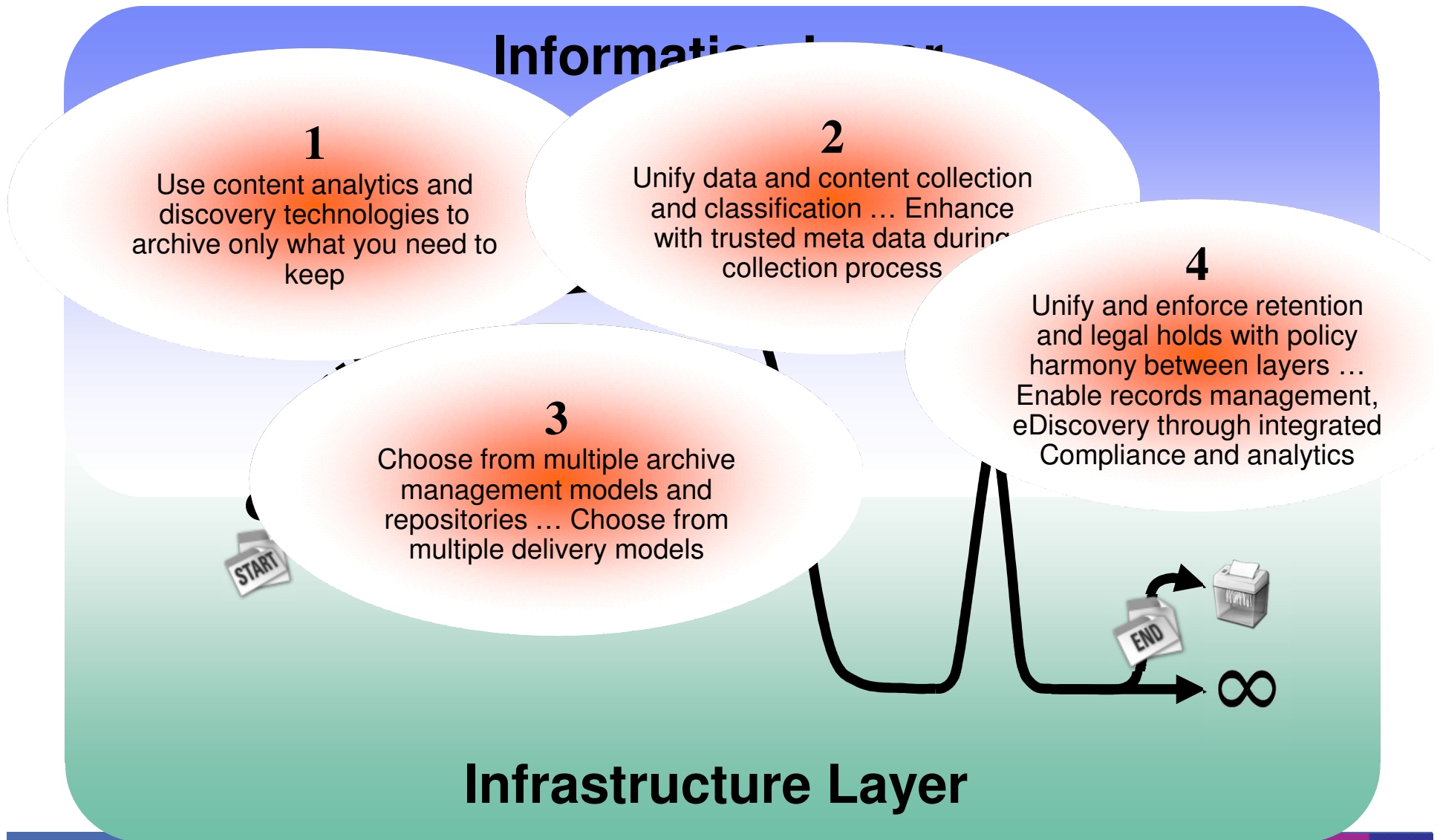


Information Infrastructure





Reminder: Being Smart Doesn't Mean Being Complicated





The Smart Archive Modular Yet Integrated Approach Enables Multiple Choice Models (and is Cloud Ready)

	<i>Optimized and Unified Ingest</i>	<i>Flexible and Secure Infrastructure</i>	<i>Integrated Compliance, Analytics and eDiscovery</i>
Integrated Software Solution Capabilities	<ul style="list-style-type: none"> Information discovery and assessment model for structured and unstructured Common collection (ingest) engine and policy management for data and content Support for specialty or custom ingest (video, medical, etc) 	<ul style="list-style-type: none"> Choice of management model including repository, storage, HSM, retention, policy management, de-dupe, migration and long-term preservation capabilities Full support for all ECM capabilities including BPM enabled access to archives SaaS Delivery Option 	<ul style="list-style-type: none"> Compliant Information Management (CIM) - Advanced Classification, Records Management, eDiscovery Federated search and retrieval Content analytics Trusted meta data
Integrated Hardware Capabilities	<ul style="list-style-type: none"> Standards based interface - allows for choice of ingestion Support for specialty or custom ingest (video, medical, etc) Choice of up to 3 collections (virtual repositories) each with different policies 	<ul style="list-style-type: none"> Choice of management model including repository, storage, HSM, retention, search, policy management, de-dupe, migration and long-term preservation capabilities Integrated Disk Storage: low cost, de-dupe, high performance, ultra dense, compliance modes Integrated Tape Storage: high density, high capacity, encryption, WORM 	<ul style="list-style-type: none"> Support for CIM and other value added capabilities Policy Harmony: Unified retention and legal hold enforcement Compliance-enabling infrastructure with Enhanced Tamper Proof Support for Flexible and adaptable protection levels: basic, med, max
Value Added Services	<ul style="list-style-type: none"> System Services: Assessment, Design, Delivery and Optimization Reference Architecture Managed Services: Email Protection, Availability and Disaster Recovery 	<ul style="list-style-type: none"> System Services: Assessment, Design, Delivery and Optimization Reference Architecture Managed Services: Email Protection, Availability and Disaster Recovery 	<ul style="list-style-type: none"> Industry specific policy development including inventory of obligations System Services: Assessment, Design, Delivery and Optimization Reference Architecture
Partner Solutions	<ul style="list-style-type: none"> Support via API and existing channels Value added solutions and services 	<ul style="list-style-type: none"> Support via API and existing channels Value added solutions and services 	<ul style="list-style-type: none"> Support via API and existing channels Value added solutions and services



How IBM is Innovating Together on Smart Archive



Software

- Linking a deeper understanding of information to the infrastructure thru discovery and content assessment analytics
- Unified content and data archiving through common collection and classification technologies with integrated records management and eDiscovery analytics

Systems

- Choice of management models at both information and storage layers including de-duplication and retention with policy harmony and enhanced tamper proof capabilities

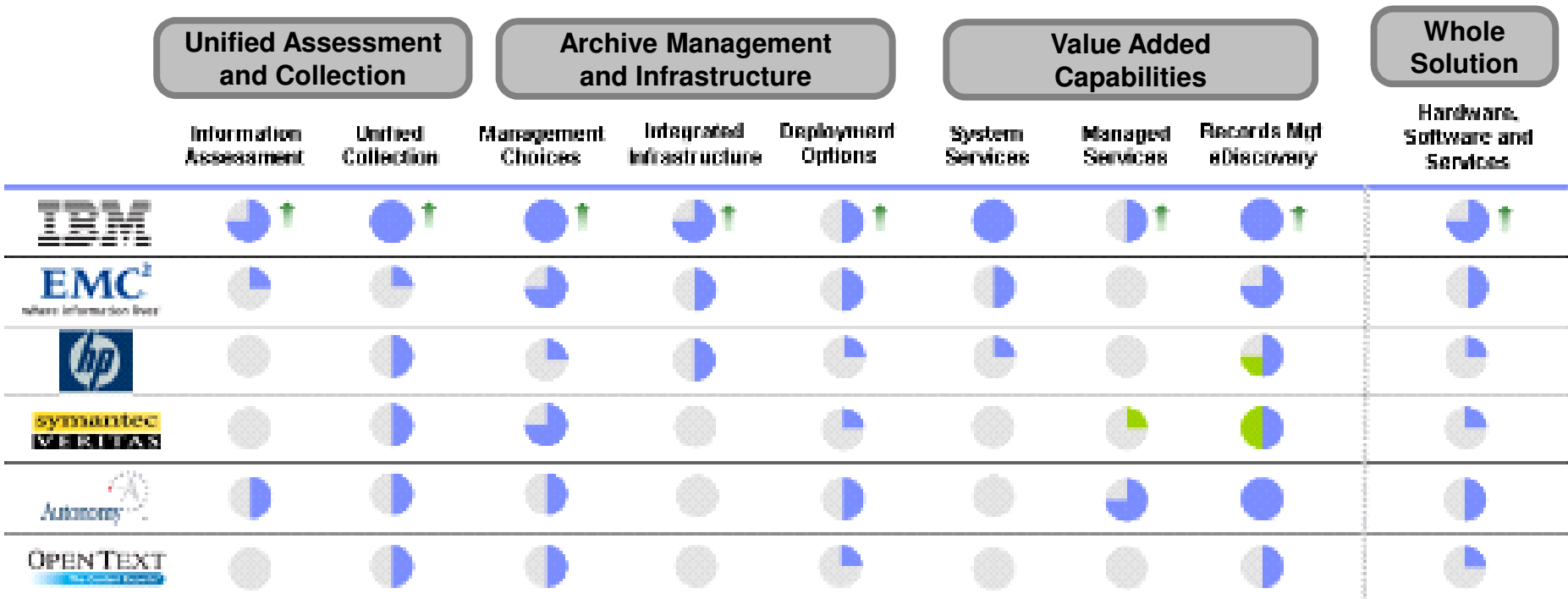
Services

- Choice of pre-integrated and pre-configured delivery options including traditional on-premise software, preconfigured appliance, software-as-a-service, cloud ready and hybrid options
- Complete value added services from policy development through business and storage optimization





IBM Smart Archive Competitive Landscape



IBM now delivers the industry's most comprehensive set of **specific solutions** in a unified, integrated and coherent information aware strategy that maximizes customer value

Capabilities: Shallow (grey circle), Deep (blue circle), We Partner (green circle), Increasing with New Announcements (green arrow)



Today's Agenda

- **The Imperative to Build a Smarter Planet**
- **The Imperative to Build a Smarter Archive Strategy**
 - **Information Explosion**
 - **Information and Infrastructure Chaos**
 - **Archiving is No Longer an Option**
- **IBM Smart Archive Approach**
- **Existing and New Solutions Being Announced**
- **Clients who support the IBM Smart Archive Approach**
- **Why IBM**





Integrated IBM Archiving Solutions

1. Software Capabilities

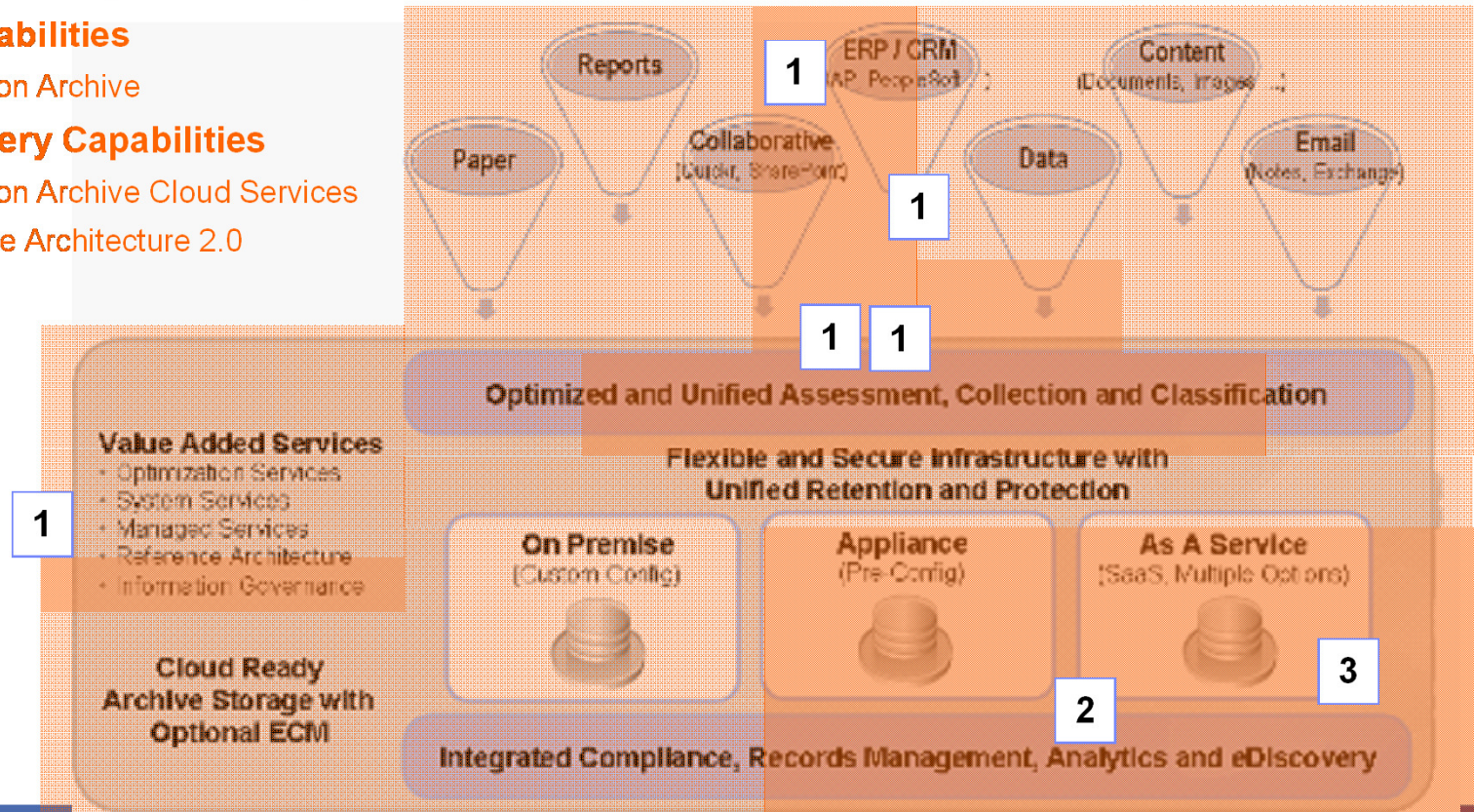
- IBM InfoSphere Content Collector w/ Content Assessment
- IBM InfoSphere Content Collector w/ Optim Integration
- IBM InfoSphere Content Collector for SharePoint / SAP Support
- IBM InfoSphere Discovery w/ Optim Data Growth Solution
- IBM InfoSphere Enterprise Records, Classification and eDiscovery

2. Hardware Capabilities

- IBM Information Archive

3. Services Delivery Capabilities

- IBM Information Archive Cloud Services
- IBM Reference Architecture 2.0





Existing and New Solutions Being Announced



New Software Capabilities

Content Assessment Analytics to Accelerate and Optimize Content Collection

IBM InfoSphere Content Collector w/ Optim Integration

IBM InfoSphere Content Collector for SharePoint / SAP Support

InfoSphere Discovery w/ Optim Data Growth Solution

InfoSphere Enterprise Records and eDiscovery

New Hardware Capabilities

IBM Information Archive

New Services

Information Archive (SaaS) Service

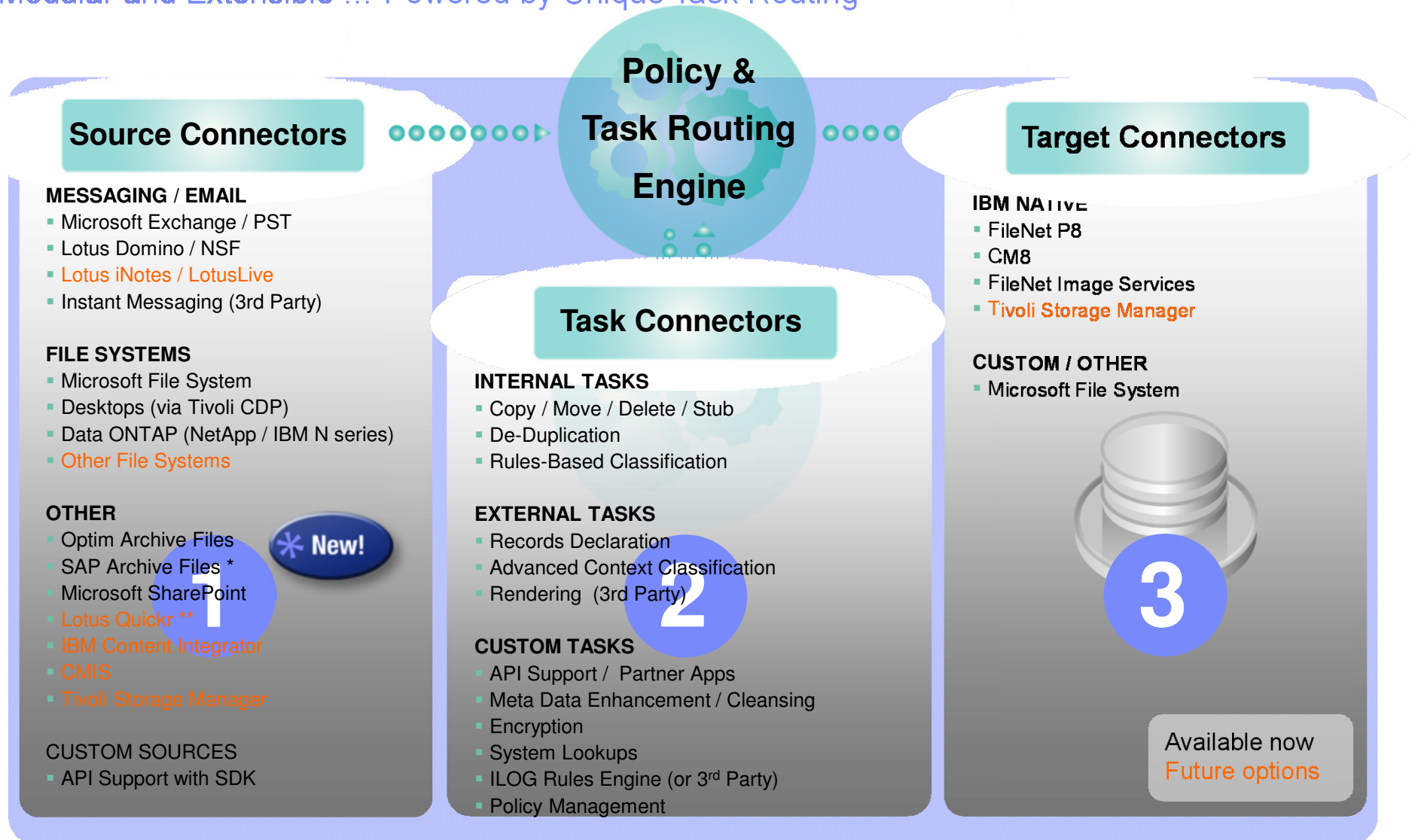
IBM Reference Architecture 2.0





Content Collector Overview

Modular and Extensible ... Powered by Unique Task Routing



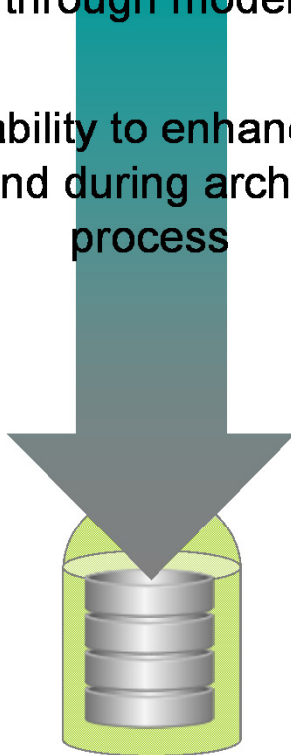
* SAP available as specialized connector
29 ** Lotus Quickr connector available today with ECM services



Supports More Than Traditional Straight-Through Archiving

Traditional archiving limited to fixed straight-through model

No ability to enhance or extend during archiving process



Content Collector Task Routing Architecture enables flexible routing or processing of internal, external and custom instructions (tasks)



Task Connectors

INTERNAL TASKS

- Copy / Move / Delete / Stub
- De-Duplication
- Rules-Based Classification

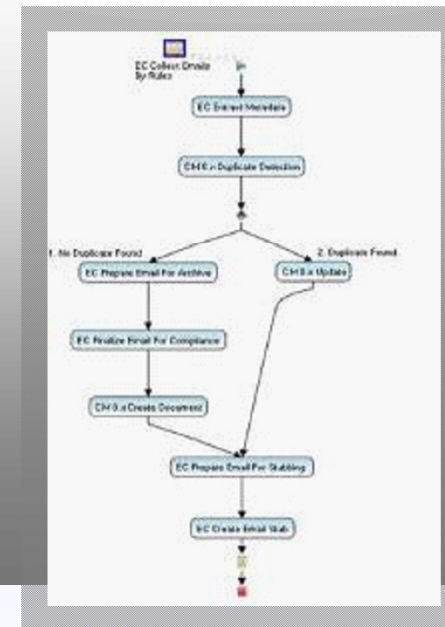
EXTERNAL TASKS

- Records Declaration
- Advanced Context Classification

CUSTOM TASKS

- API Support / Partner Apps
- Meta Data Enhancement / Cleansing
- Encryption
- System Lookups
- ILOG Rules Engine (or 3rd Party)
- Policy Management

Task Routing



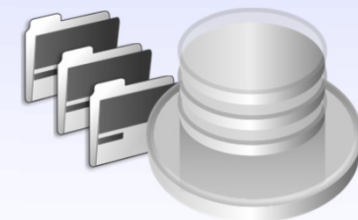
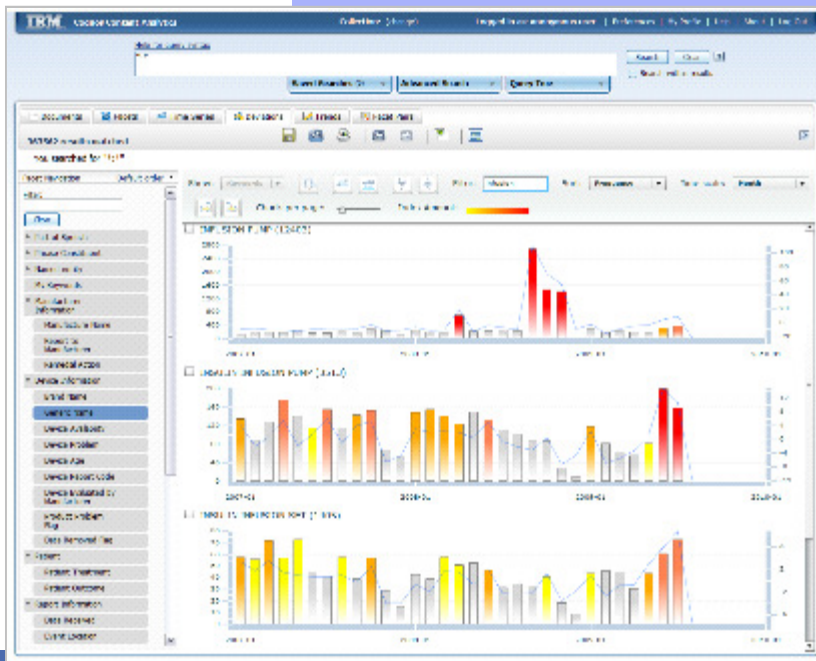


New Content Assessment Capability

Leverage Content Analytics to assess and decide what information to manage, archive, trust and leverage

Decommission unnecessary information (over-retained, irrelevant and duplicated)

Decommission unnecessary content-centric systems (file shares, SharePoint, PSTs, NSFs, team rooms, laptops) while retaining relevant information





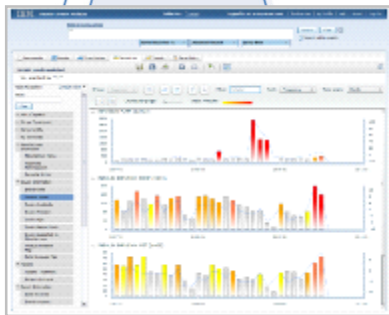
Content Assessment Analytics and Content Collection

How it Works



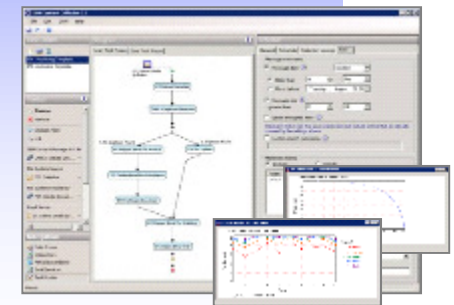
Content Analysis and Assessment

- Configure for “in place” exploration and analysis of desired content sources
- Interactively search, mine and explore information to understand relationships and value to business
- Make decisions, build classification models and collection policies for initial cleanup and ongoing management



Continuous Collection and Policy Management

- Setup and manage policies / rules for **Sources**, **Tasks** and **Targets** including de-duplication, records declaration, classification and ongoing monitoring
- Configure and customize **Task Routing** including meta data enhancement, 3rd party applications, advanced context classification and more



FILE SYSTEMS

- Microsoft File System
- Desktops (via Tivoli CDP)
- Data ONTAP (NetApp / IBM N series)
- Other File Systems

OTHER

- Optim Archive Files
- SAP Archive Files *
- Microsoft SharePoint
- Lotus Quickr *
- IBM Content Integrator
- CMIS
- Tivoli Storage Manager

CUSTOM SOURCES

- API Support with SDK



INTERNAL TASKS

- Copy / Move / Delete / Stub
- De-Duplication
- Rules-Based Classification

EXTERNAL TASKS

- Records Declaration
- Advanced Context Classification
- Rendering (3rd Party)

CUSTOM TASKS

- API Support / Partner Apps
- Meta Data Enhancement / Cleansing
- Encryption
- System Lookups
- ILOG Rules Engine (or 3rd Party)
- Policy Management

CUSTOM / OTHER

- Microsoft File System





InfoSphere Content Collection and Archiving Solutions

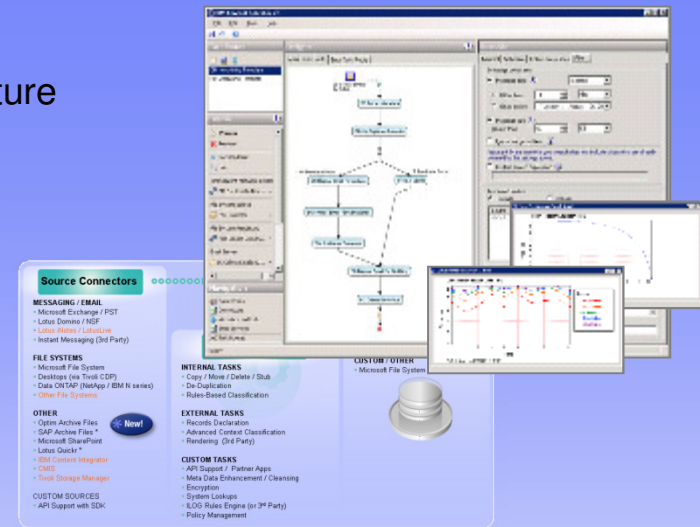
A family of Content Collection and Archiving offerings and partner solutions based on a modular, extensible architecture that enables organizations to gain control of information growth to better manage, trust and leverage information

- Reduce storage costs
- Improve production system and backup performance
- Reduce litigation costs and risks

IBM InfoSphere Content Collector for Email

IBM InfoSphere Content Collector for File Systems

IBM InfoSphere Content Collector for Microsoft SharePoint



More than email

Assess, monitor, identify, and **collect** virtually all content types from all locations including “content in the wild” and existing silo systems

More than archiving

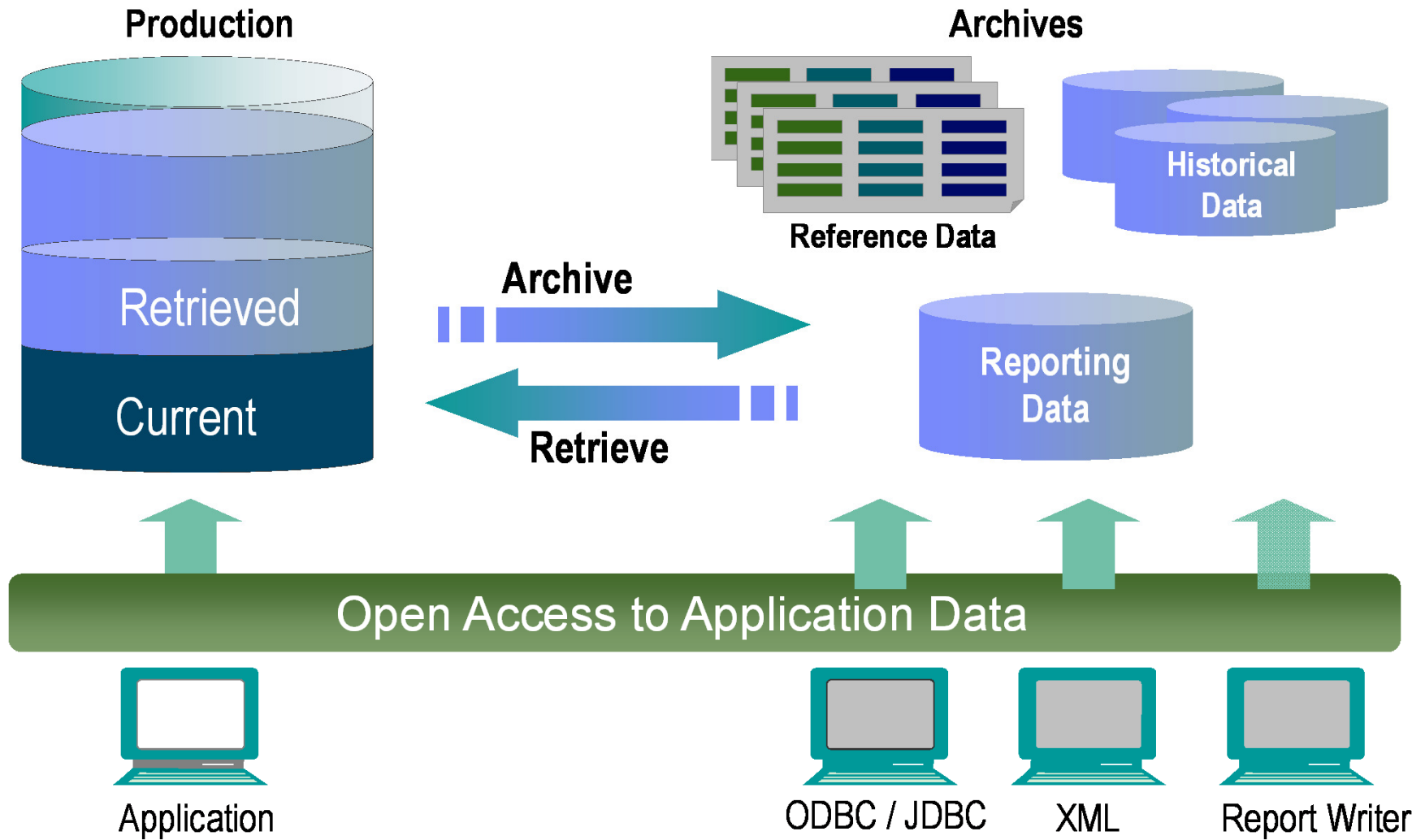
Enhance by tasking, filtering, transforming, extracting meta data, customizing and more, including multiple classification options

More than an isolated solution

Manage content as part of ECM platform (not a silo) to activate content, establish trust and unlock value

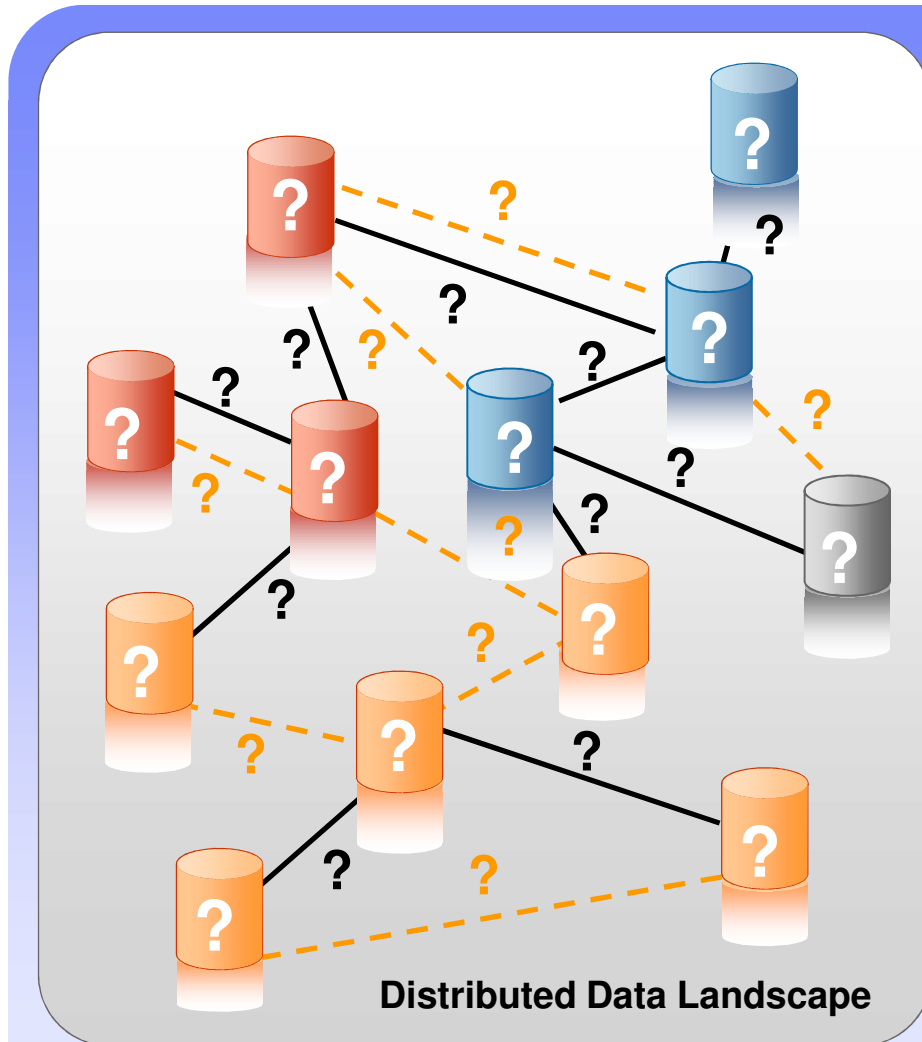


Data Archiving





You Can't Manage or Archive What You Don't Understand



Highly distributed

- Multiple applications, databases and platforms

Complex, poorly documented data relationships

- Which data should be archived and/or disposed of?
- Which clients are eligible for the new sales promotion?
- Which version of the data should we use for the ERP consolidation?

Relationships not understood because:

- Corporate memory is poor
- Documentation is poor or nonexistent
- Logical relationships (enforced through application logic or business rules) are **hidden**



IBM InfoSphere Discovery

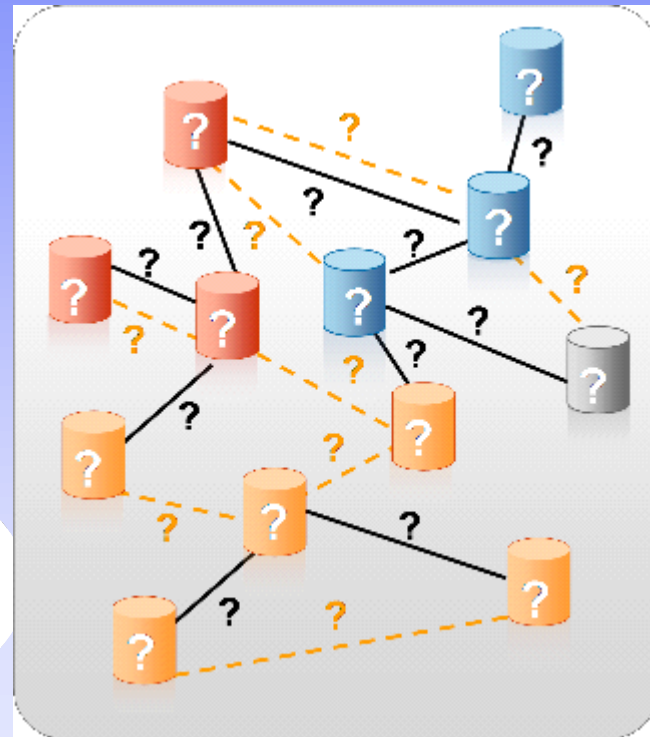
Understand Your Distributed Data Landscape

*** New!**

Automates analysis of data and data relationships for complete understanding of data assets for archiving, retention and other applications

- More accurately discover and determine relevant data to be archived and retained
- Identifies the relationships that link data elements into a “business object” within a source (customer, counterparty, invoice)
- Identifies the complex logic that relates business objects across multiple sources

Enhanced with Optim Data Growth Solution





French National Railroad (Societe Nationale de Chemin de Fers)



Challenge

- SNCF has historical transactional ticket databases, file shares of related content (mail, invoices, orders, office documents), and other financial systems that are growing and unmanaged.
- Currently unable to address multiple compliance requirements around:
 - Financial reporting Read-Only Storage of Archived Data
 - Records Retention & Management
- Difficult to find all pieces related to a ticket transaction.
 - Stored in multiple places, manual process to find and retrieve.

Solution

- IBM Optim™ Data Growth
- IBM Content Collector for File Systems
- IBM FileNet Content Manger
- IBM FileNet Records Manager
- IBM FileNet eForms

SNCF Needs:

- Global Unified Archiving Solution of structured data and unstructured content through a common ingest and processing model.
- A common policy and software solution for Records retention and management
- Ability to decommission legacy databases and fileshares
- Reduce database back-up and restore; optimize production servers and storage capacity.
- Improve ability to meet Compliance demands for finance and railway transportation authorities.
- Single, easy-to-use retrieval interface for ticket sale transactions and all related documents for a customer trip, for over a thousand SNCF authorized users.

SNCF needed a unified solution, with a common records management policy and record retrieval capability, to manage and archive both structured data as well as unstructured content (such as documents, email, invoices and orders). The IBM strategy for unified archiving fits SNCF's requirements, and therefore SNCF selected IBM solutions including Optim, Content Collector, FileNet, FileNet P8 and eForms. We expect that the IBM solution will yield significant cost savings and increase compliance.

Pascal Leborgne - Project Manager





Thomas Miller Group

Challenge

- Industry and government regulations and legal discovery drove the need for a more effective method of managing, retaining and producing electronic information in a timely manner.

Solution

- IBM Business Partner, Neocol, implemented the IBM eDiscovery solution on the existing Wintel architecture and installed a separate 3.3 TB disk array
- IBM eDiscovery provides search, legal hold, and export of case-relevant archived email for discovery purposes
- IBM Content Manager manages all e-mail content across multiple platforms, databases and applications
- IBM CommonStore for Lotus Domino provides e-mail archiving and retrieval, and manages growth for any Notes database or server platform

THOMAS MILLER

Business Benefits

- 30,000 daily e-mails and attachments are archived and indexed for rapid search and retrieval capabilities
- 23 million e-mails retroactively archived in case relevant format and eDiscovery ready
- Deep compression and single instance storage functionality reduced storage space by 60%
- Full search & retrieve eDiscovery capability makes it easier for users to comply with legal demands
- Users benefit from unlimited mailbox mgmt

“IBM’s e-mail management offerings provided us with the stability and functionality that we needed to address and meet our e-mail archiving, retention and compliance regulatory requirements.”

Rashid Mahmood, Lotus Notes Systems
Manager, Thomas Miller Group





Toyota Financial Services

Challenge

- A short term requirement of archiving all email correspondence and storing in a single and secure repository that was seamless and easy to use and search within.
- A strategic solution that could be used as a repository for HR documentation and correspondence supporting the HR department from a litigation perspective.
- In addition, they needed a better mailbox management system and needed to reduce their storage costs which were escalating.

Solution

- IBM's Email Archiving solution to archive their 1.3 million emails and attachments which are indexed for rapid search and retrieval



Business Benefits

- A strategic solution that could help them improve their ability to address their compliance requirements for SOX & the FSA
- The same technology can be used to archive data from their SAP application for compliance as well as improve the performance of the application
- Due to the IBM compression technology built into IBM Content Manager, Toyota has already seen a storage savings

“IBM Business Partner Neocol has demonstrated excellent responsiveness in providing ongoing support of the archiving system. We feel sure that our future requirements will also be met to fill our internal skills gap.”

Toyota Financial Services (UK) PLC





Halliburton

HALLIBURTON

Unleash the energy.™

Challenge

- Processing over two million invoices annually impacting database performance
- Major delays in receiving paper invoices
- Online access to invoice image for approval
- Audit

Solution

- IBM FileNet Image Repository
- IBM FileNet Application Connector for SAP R/3

Business Benefits

- SAP running at peak performance
- Saved millions by eliminating off-site storage fees
- Saved hundreds of thousands of dollars annually in late payment fees
- Improved efficiency

“When you consider the annual cost of off-site storage for backup documents over seven years, which is how long we’re required by law to keep backups of our accounting documents, we’ve saved millions of dollars by archiving them electronically in the FileNet system.”

Mark Hickok, System Administrator, Halliburton





Finlay Enterprises, Inc.



Challenge

- Improving application performance and service levels to customers, merchants, sales associates and internal business users
- Reducing costs for increased processing and storage capacity required to accommodate significant database growth
- Eliminating application downtime and outages during daily operations and especially during peak buying seasons

Solution

- Optim™ Data Growth Solution

Business Benefits

- Improved response time for targeted processes by as much as 60 percent or more
- Reclaimed over 100 GB of high-priced storage capacity during initial archiving, resulting in savings estimated at \$1.8 million dollars in projected 5-year IT capacity expansion costs
- Increased system availability resulting from shorter batch processing windows and reduced downtime
- Achieved predictable scheduling to increase “open-for-business” hours for expanded revenue generating opportunities and customer service





Safeco Insurance



Challenge

- Meeting financial reporting deadlines by shortening batch cycles affected by increasing data volumes
- Reducing IT charge backs to business units by lowering CPU consumption
- Increasing application availability by reducing time for backup and disaster recovery
- Increase application performance
- Rarely accessed data, were growing at a rate of three million rows per month and consuming limited storage capacity on the production database

Solution

- Optim™ Data Growth Solution

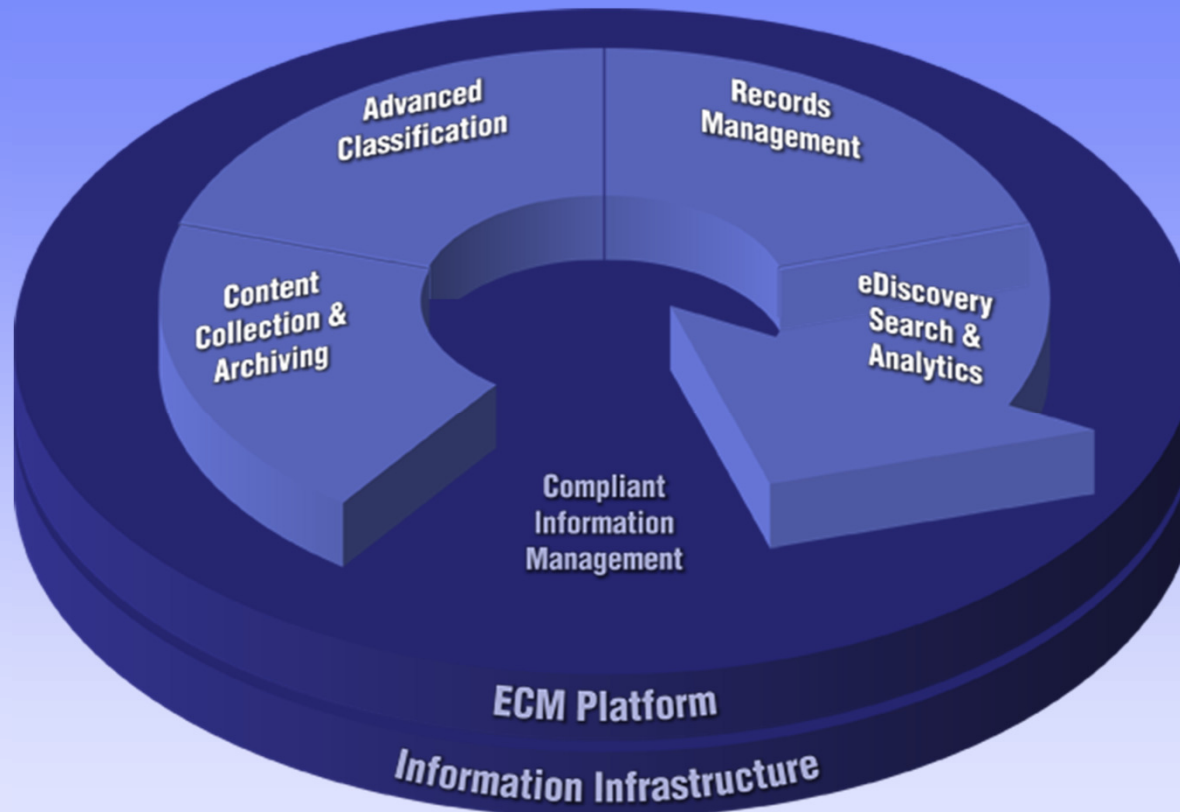
Business Benefits

- Database archiving has allowed us to reduce CPU usage by roughly 20 to 25 percent per month,” said McGill. “And the annualized savings from implementing database archiving for the GL tables is over \$90,000. This CPU savings directly benefits the bottom line by reducing charge backs to the business units
- Timely completion of mission-critical business activities
- Reduced monthly CPU usage by 20 to 25 percent and lowered IT costs to business units
- Improved application availability by shortening windows for application backup and disaster recovery





Compliant Information Management Enables Information Governance Throughout the Information Lifespan





IBM InfoSphere Classification Module

Leveraging the Full Content Context for High Accuracy Advanced Classification



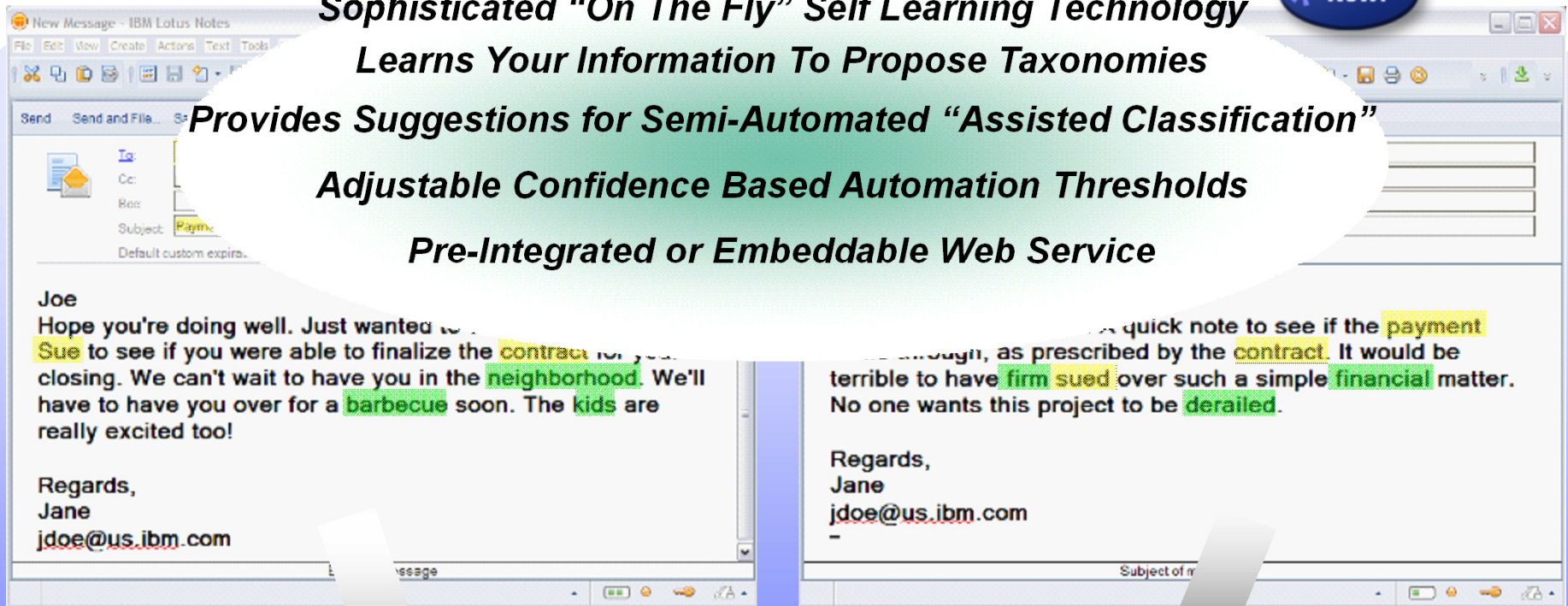
Sophisticated "On The Fly" Self Learning Technology

Learns Your Information To Propose Taxonomies

Provides Suggestions for Semi-Automated "Assisted Classification"

Adjustable Confidence Based Automation Thresholds

Pre-Integrated or Embeddable Web Service



*Rules based classification technologies alone are not accurate enough for most applications
(without adding content context)*



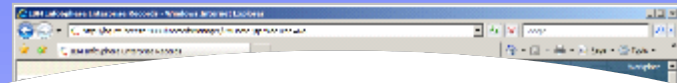


IBM InfoSphere Enterprise Records

Enterprise Electronic and Physical Records Powered by Integrated Process Management

Manage all records regardless of type, media or storage location throughout lifespan that ensures authenticity, reliability, integrity and usability to proactively improve defensibility, lower risks and costs

- Advanced information design, file plan, classification and meta data management including advanced context classification
- Integrated Records Federation Services for multiple repositories
- Complex event and records process management including intelligent retention, dynamic legal holds and audited disposition management
- Physical records support with real-time audited records process and location tracking
- DoD 5015.02-STD Certified
- Best practice pre-integrated records process templates



20 Million Records Per Day Scalability
Iron Mountain Accutrac Integration
Physical to Electronic Conversion
Automated Bulk Operations



Extend for integrated file room and offsite physical records storage management with Iron Mountain Accutrac Software

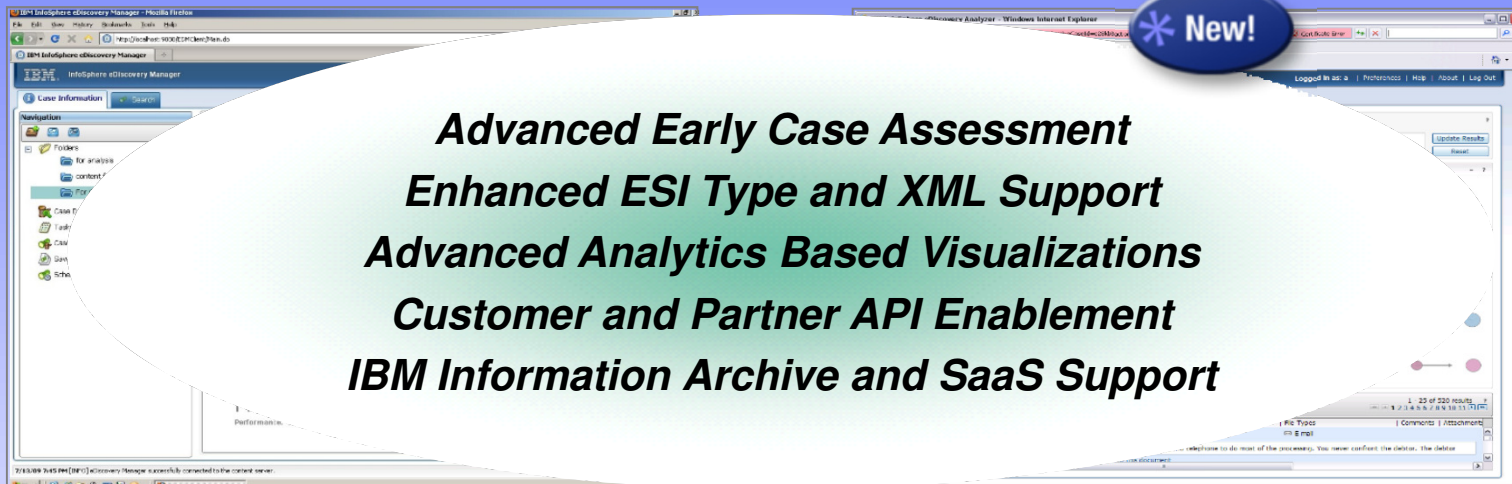




IBM InfoSphere eDiscovery Manager & Analyzer

Efficient Litigation Response Enabled by Proactive Information Management

Increase agility, improve defensibility and lower cost of eDiscovery response with targeted tools to collect, hold, manage, assess and intelligently cull collected electronic information regardless of originating source



IBM InfoSphere eDiscovery Manager

- Tool for authorized IT users to help respond to discovery requests from legal
- Create and manage cases; search, assign, hold, preview, and export collected content
- Built on and integrated with ECM platform with full auditability for chain-of-custody

IBM InfoSphere eDiscovery Analyzer

- Early case assessment and smart culling for legal professionals and litigation support specialists
- Smart refinement of case collections to help dramatically reduce eDiscovery costs
- Advanced conceptual search and content analytics for rapid case insight





Challenge

- Quickly adapt to industry and government regulations
- Reduce cost and risk of responding to legal discovery requests for email and files
- Reduce, consolidate and share information to produce better customer outcomes
- Flexibility to quickly scale and expand to meet future business needs

Solution

- IBM Content Collector to ingest and de-dupe Microsoft Exchange and future File System content
- IBM eDiscovery Manager to search, cull, and export case-relevant content for eDiscovery
- IBM eDiscovery Analyzer to analyze discoverable content previous done via an external firm
- Future growth options for seamless integration of IBM Classification Module to determine which content has business value and Records Manager for proper retention/disposition of corporate records
- IBM ECM platform for consolidating, sharing and activating information

Business Benefits

- Automated workflows aligned to business needs
- Archived content is accessible from other applications resulting in better business outcomes and eliminating silo'd information
- Improved control over content prior to it being archived
- Consistent rules and policies across multiple content types
- Over 400,000 daily e-mails and attachments are archived and indexed for rapid search and retrieval
- Significantly reduce the size and cost of handling litigation of investigation data

IBM's approach is simple and straight forward. We now have a solution model that meets our immediate business needs for archiving, retention and compliance and provides a lower cost, lower risk method to expand and integrate key capabilities to meet our future plans."

Andy Jacobs, ECM and Collaboration Lead Architect,
BlueCross BlueShield of Tennessee





Existing and New Solutions Being Announced



New Software Capabilities

Content Assessment Analytics to Accelerate and Optimize Content Collection

InfoSphere Content Collector w/ Optim Integration

InfoSphere Content Collector for SharePoint / SAP Support

InfoSphere Discovery w/ Optim Data Growth Solution

InfoSphere Enterprise Records and eDiscovery

New Hardware Capabilities

IBM Information Archive

New Services

Information Archive (SaaS) Service

IBM Reference Architecture 2.0





Introducing IBM Information Archive

Next Generation Information Retention Solution

* New!

A **universal**, **scalable**, and **secure** storage repository for structured and unstructured information

A fully integrated archive **appliance**

Addressing the complete information retention needs of **mid-size** and **enterprise** clients

Application support including IBM ECM and Optim with **policy harmony**





Introducing IBM Information Archive Next Generation Information Retention Solution

*A unified and simplified cloud-ready **Smart Business System** that will adapt as business needs evolve. Immediate value delivered from day one.*

Start archiving in 1 day or less

- Easy to implement, configure and manage

Begin optimizing your storage infrastructure immediately

- Offload primary storage
- De-duplication built-in
- Optionally migrate to tape for additional cost and energy savings

Retain with confidence

- Protect and secure your information

Quickly locate and retrieve information for litigation support

- Index and search on data and meta data

Universal

- Supports standard file system interfaces
- Supports applications (IBM ECM) with policy harmony

Modular and highly scalable

- Up to 304 TBs with disk and PBs with attached external tape

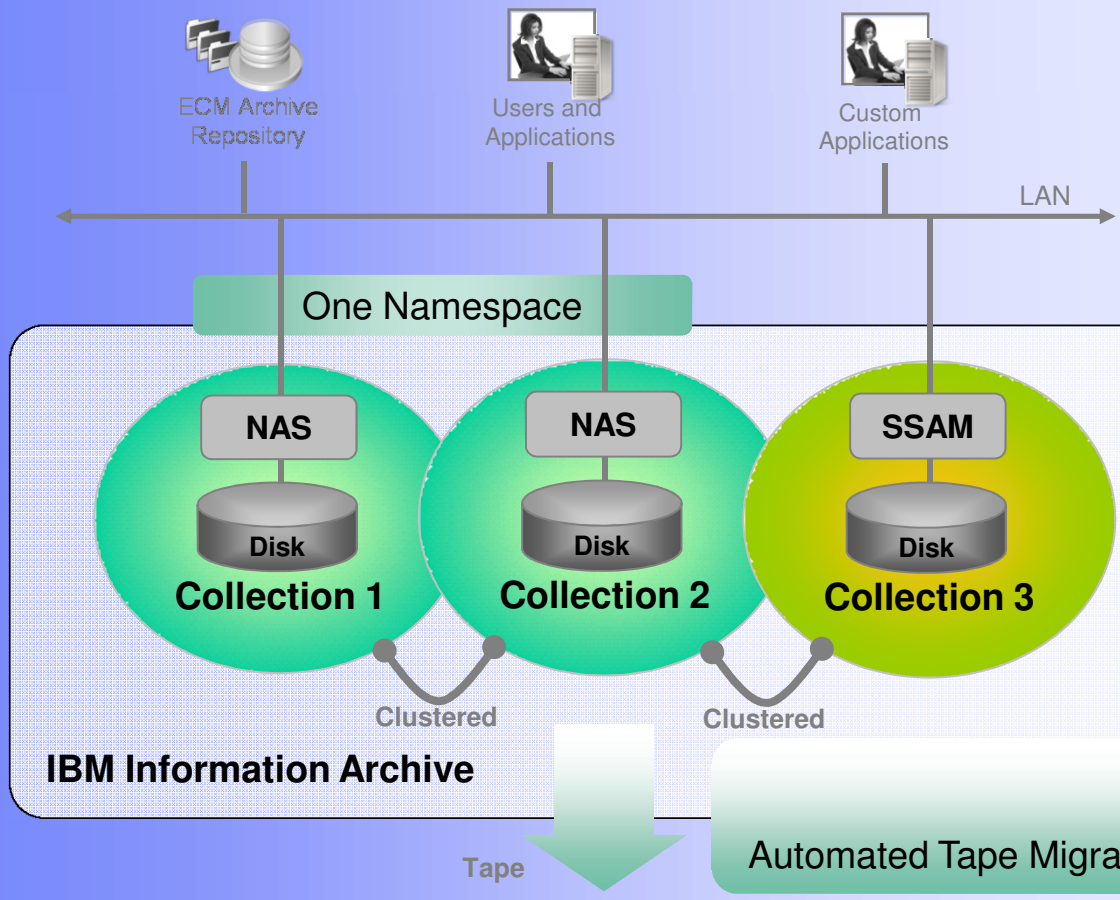




Introducing IBM Information Archive

Next Generation Information Retention Solution

Advanced 3 Collection Architecture enables different usage for Private Clouds and/or multiple applications





Introducing IBM Information Archive

Next Generation Information Retention Solution

Archive Infrastructure Layer supports enables policy sharing while serving both disk and tape drives

Archive Infrastructure Layer

- Policy Based Retention with Sharing Enabled
- Tiered Storage Hierarchy Management
- Standard Ingest Interfaces
- Indexing and Search*
- Automated Data Migration for Long Term Preservation

Disk Storage Layer

- Low cost Storage
- De-Duplicating Storage
- High Performance Ultra Dense Storage

Tape Storage Layer

- High Aerial Density Cartridges
- High Capacity Tape Frames
- WORM and Encryption Capabilities

IBM Information Archive



* Release 1.5



IBM Information Archive Key Features

Features	IBM Information Archive
Ease of Use	Appears as a file-server, simple drag and drop files to Information Archive.
Installation and Implementation	Information Archive is physically installed by a Certified Engineer. Quick configuration via wizards. Dynamically add storage.
User Interface	Single, task oriented GUI to manage the entire solution (+ CLI)
Application Interfaces	NFS, CIFS*, HTTP*, FTP*, SSAM – all within IA
Scalability (per Information Archive)	Supports billions of objects per collection – up to 3 collections (Archive into three separate collections)
Retention Policies	Accepts retention policies from applications (including ECM) or creates them (Event-based or time-driven) enabling policy harmony
Compliance / Security	Each collection can be configured with different protection levels (basic, intermediate, maximum). New patent-pending tamper proof technology increases protection.
Index / Search	Full text indexing and search (both data and metadata)*

* Release 1.5





Hansgrohe AG

hansgrohe

Challenge

- Lacked ability to rapidly respond to legal discovery demands
- 2,000 mailboxes, 30,000 daily email volume (3 to 5 GB/day)
- Legal requirement to archive for 10 years
- Small IT staff needed an automated solution

Solution

- Email archiving, retention, and retrieval solution bundle for mid market customers
- Total Solution components:
 - Application Software: CommonStore, eMail Search for CommonStore
 - Hardware: System x server; DR550 storage system
 - Services: IBM Global Services

Business Benefits

- Ensures compliance with Discovery Orders, avoiding penalties and judgments from an inability to produce emails in a timely fashion
- Ability to search across mailboxes and apply multiple legal holds to critical emails ensuring retention of email for duration of need
- Single instance store to reduce volume of email and attachments in storage





Existing and New Solutions Being Announced

New Software Capabilities

- Content Assessment Analytics to Accelerate and Optimize Content Collection
- InfoSphere Content Collector w/ Optim Integration
- InfoSphere Content Collector for SharePoint / SAP Support
- InfoSphere Discovery w/ Optim Data Growth Solution
- InfoSphere Enterprise Records and eDiscovery

New Hardware Capabilities

- IBM Information Archive

New Services

- Information Archive (SaaS) Service
- IBM Reference Architecture 2.0





Coming Soon: IBM Information Archive Cloud Services

Delivering on the Smart Archive Vision ... Designed to Be Fast and Easy to Deploy and Use



An information archive-as-a-service based on state-of-the-art IBM Software and IBM Systems managed by IBM Global Technology Services

IBM Software

- Email archiving service with integrated content management and eDiscovery Management enabled by:
 - IBM InfoSphere Content Collector for Email
 - IBM Content Manager 8
 - IBM InfoSphere eDiscovery Manager
- Supports Lotus Notes and Microsoft Exchange
- Plans to support file, SharePoint and database archiving

IBM Systems

- Based on IBM systems and storage
- Built-on dynamic infrastructure designed for today's information growth and archiving challenges

IBM Services

- Operated by IBM Business Continuity & Resiliency Services
- Email continuity, recovery and backup services also available

Benefits

- Reduce upfront capital expense and ongoing operational costs.
- Store critical data such as email in a security-rich offsite facility based on your specific retention policies
- Lower storage costs and improve operational efficiency
- Improve response time to legal and regulatory compliance inquiries





IBM Reference Architecture for Archive v2.0

Enabler of Enterprise Archiving Strategy

IBM's Reference Architecture for Archive reduces the complexity, cost, and risk of enterprise archive solution deployment and sets the foundation for delivering on the promise of Information Agenda and Information Infrastructure

Defines architecture patterns based on actual use cases
Includes Conceptual and Logical Levels of Architecture

- Conceptual: Close to business definitions, business processes and enterprise standards; it is stable over time and can be augmented as new business needs arise; it is owned by data stewards, enterprise data architects and governance groups
- Logical: Translates conceptual design into logical data design; takes in consideration existing data elements, functions, processes and their relationships; responsible to present a view of the enterprise data for user and processes consumption; owned by logical data modelers, enterprise architects and business analysts







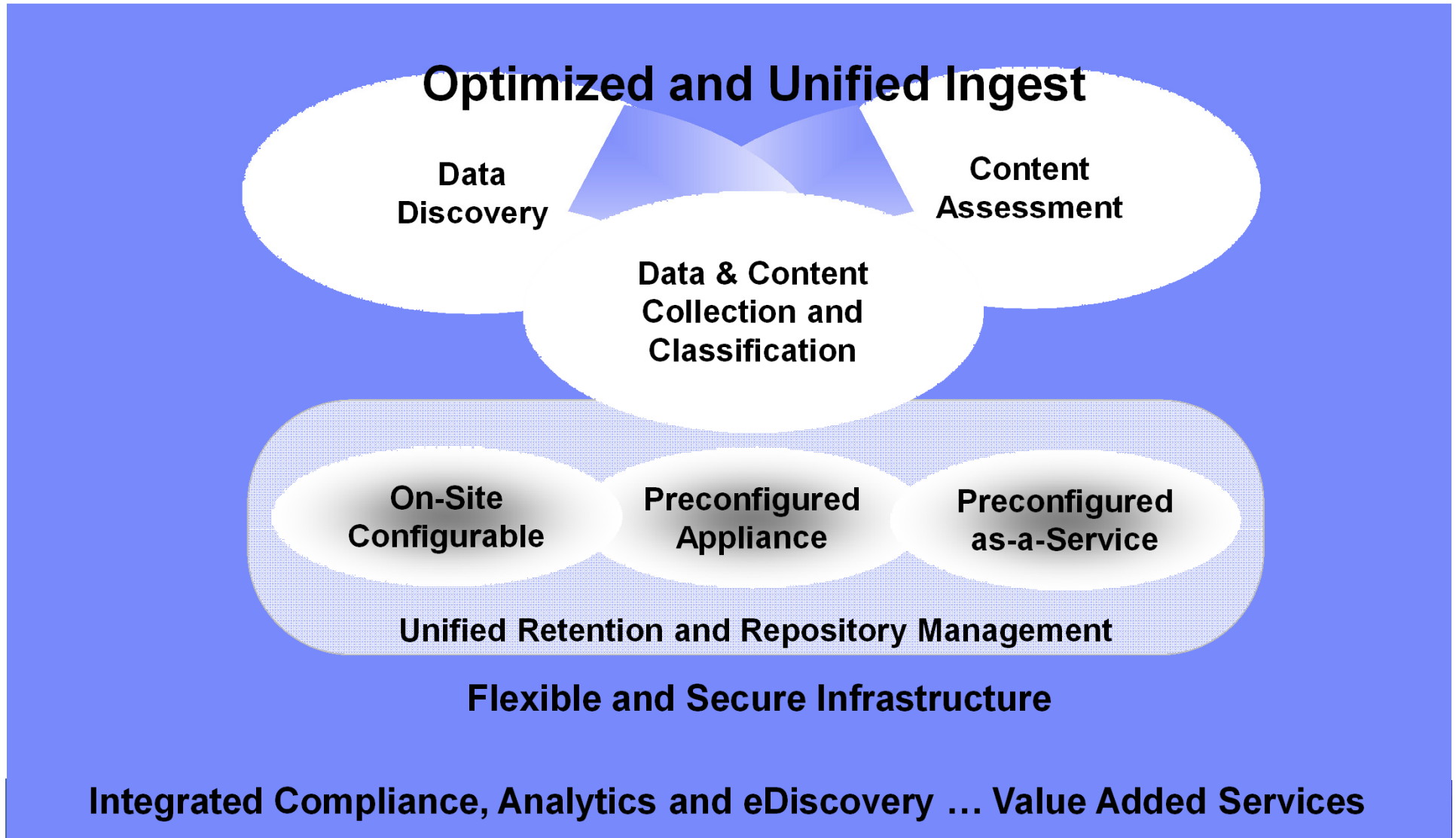
Today's Agenda

- **The Imperative to Build a Smarter Planet**
- **The Imperative to Build a Smarter Archive Strategy**
 - **Information Explosion**
 - **Information and Infrastructure Chaos**
 - **Archiving is No Longer an Option**
- **IBM Smart Archive Approach**
- **Existing and New Solutions Being Announced**
- **Clients who support the IBM Smart Archive Approach**
- **Why IBM**





Most Comprehensive Archiving Solution in the market



IBM Information
ON Demand 2010

Thank You



IBM

INFORMATION-LED
TRANSFORMATION



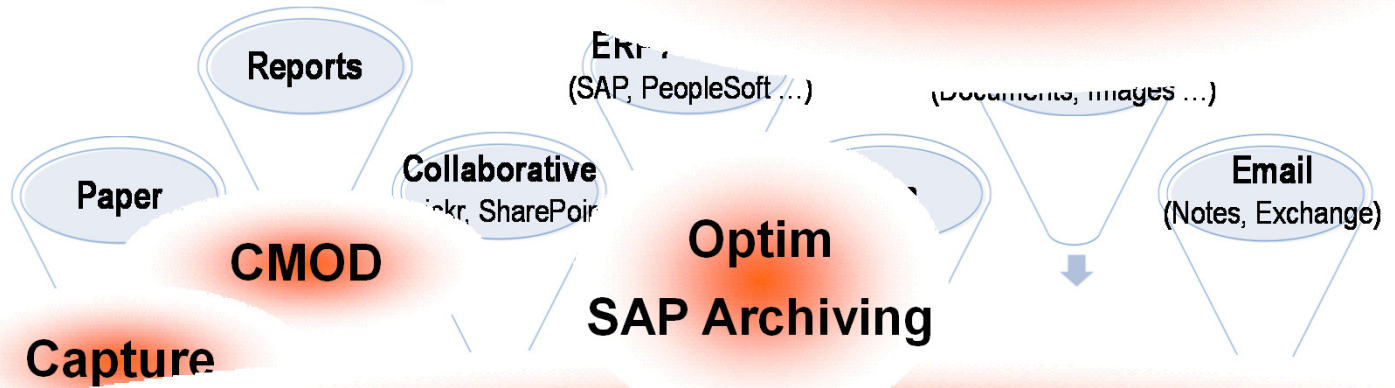
**LEAD
THE WAY**





Existing Integrated IBM Archiving Solutions

InfoSphere Discovery InfoSphere Content Assessment



Capture

CMOD

Optim SAP Archiving

Content Collector and Classification Module

ECM Repository

Information Archiving

Information Archive Cloud Services

Value Added

- Optimization
- System Services
- Managed Services
- Reference Architecture
- Information Governance

Cloud Ready Archiving

Storage
Optional

Enterprise Records and eDiscovery Analytics