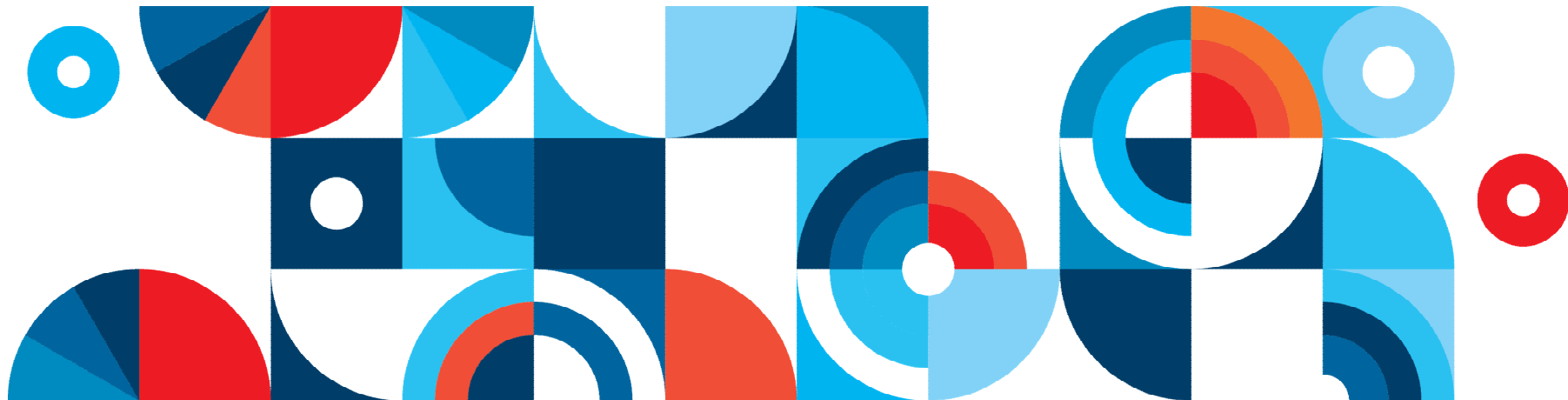


Xavier Giannakopoulos, Product Management

Unattended Cloud Application execution with SmartCloud Workload Automation



Agenda

- Unattended Cloud Datacenter
- Visibility – Control – Automation
- E-Commerce example
- Workload automation and cloud
- Addressing the challenges
- Simplifying workload management
- Why IBM

Ready for the second wave of Cloud requirements

- ✓ **Lifecycle automation** *is a crucial item for customers.*
- ✓ **Workload Generation** *is a delicate development items where large effort might be spent.*
- ✓ **Unified TWA interface** *delivers excellent **visibility** through unified interface*
- ✓ **Governance features** *provide strong **control** to cloud administrators business owners*
- ✓ **Multi-environment management** *provides governance in **large corporation***
- ✓ **Dynamic features** *deliver automated and **optimised** execution of the workloads*



VISIBILITY



CONTROL



AUTOMATION

How Unattended culture provides great benefits in the Cloud context

Through Integrated Service Management capabilities that provide enhanced visibility, control and automation

Visibility

Gaining real-time, integrated visibility into entire infrastructure for monitoring its health and fine-tuning performance for improved operational agility and prioritized response.



Respond from anywhere and make better decisions

Control

Managing business and IT assets including cost, security, change, usage and compliance



Improve quality and reduce risk

Automation

Automation of the IT environment, from end-to-end, to streamline costs and improve quality of IT services delivered to the business, its suppliers and customers.



Lower cost and build agility

Unattended visibility: Summary and Drill-down

- Personnel for SCWA is either online, or offline, needing deep drill capabilities for the first case, and bird's-eye views for the second.
- Personal workload summary for business users
- Control operation on all remote applications, from Distributed or Mainframe

Unattended control: Policies and Reliability

- When rules are decided, they can be enforced strictly with low effort. Service is delivered automatically and within boundaries
- Pervasive auditing to leave a track
- Automated reliability thanks to corrective actions

Unattended automation: Optimisation

- Optimise execution thanks to integrated balancing
- Develop more powerful solution in the Unattended execution framework
- Reach applications through out-of-the-box integrations

SmartCloud Workload Automation

IBM Unattended execution in the Cloud

IBM SmartCloud Workload Automation is a general-purpose Workload Automation modeler and executor.

a true Infrastructure-as-a-Service cloud, reducing cost and providing a highly scalable, rapid-deployment environment with near- zero downtime and automated recovery across heterogeneous platforms.

What's New?

Self-Service catalog to repackage existing and new automation assets as an offering for Business end users

Dynamic agents natively handled, and used by the product for better availability and optimisation

Standardized governance over object audit, history, change tracking and promotion

Natively reach out to most common applications like SAP, Oracle, Cognos, Datastage, Informatica

Pricing per job to match more closely the delivered value

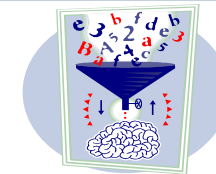
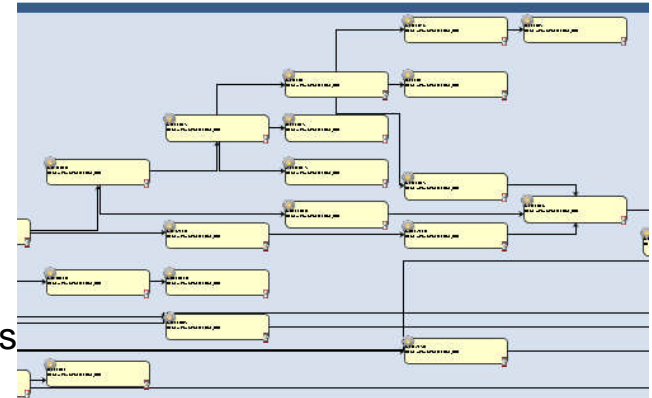
Business Value:

Enterprise solution designed to meet business growth, organic or merger

Governance at all levels to ensure smooth go-live, and avoid mistakes

Facilitate Business discussion by enabling self-service request catalog of standard procedures

Cloud embedding through integrations with all main components of cloud management (Storage, Monitoring, Provisioning)



Display Name	Status	Availability	CPU Usage	Free Memory
twsagent	Online	Available	22%	1262/3472 MB (36%)
REMENG	Online	Available	0%	0/0 MB (0%)
twsftaagent	Online	Available	19%	1267/3472 MB (36%)
nc125165	Online	Available	0%	29/3017 MB (0%)

Learn More:

<http://www.ibm.com/software/tivoli/products/workloadautomation/>

Clients need access to customized business data...



Infrastructure



A Business Analyst needs for the shoes section to be included in a Discount special action during next week-end, calculating an estimated additional revenue.



A salesperson wants the report on week-end sales on Monday by 8:00 AM



An HR person wants to send the list of persons on extra-time to Industrial relations before Friday 4 PM



- Rich Business Process descriptions, accessible according to role
- Possibility to tune process descriptions to new conditions, authorized and tracked
- Metrics to track performance, SLAs, and long-term trends.

... Workload Automation delivers results...



Infrastructure



Report is sent immediately after data has been processed, with a **8AM SLA**.



With one modified job, the market has been added to the whole price computing and distribution process, and extra nodes are ready to be provisioned for the corresponding analytics.



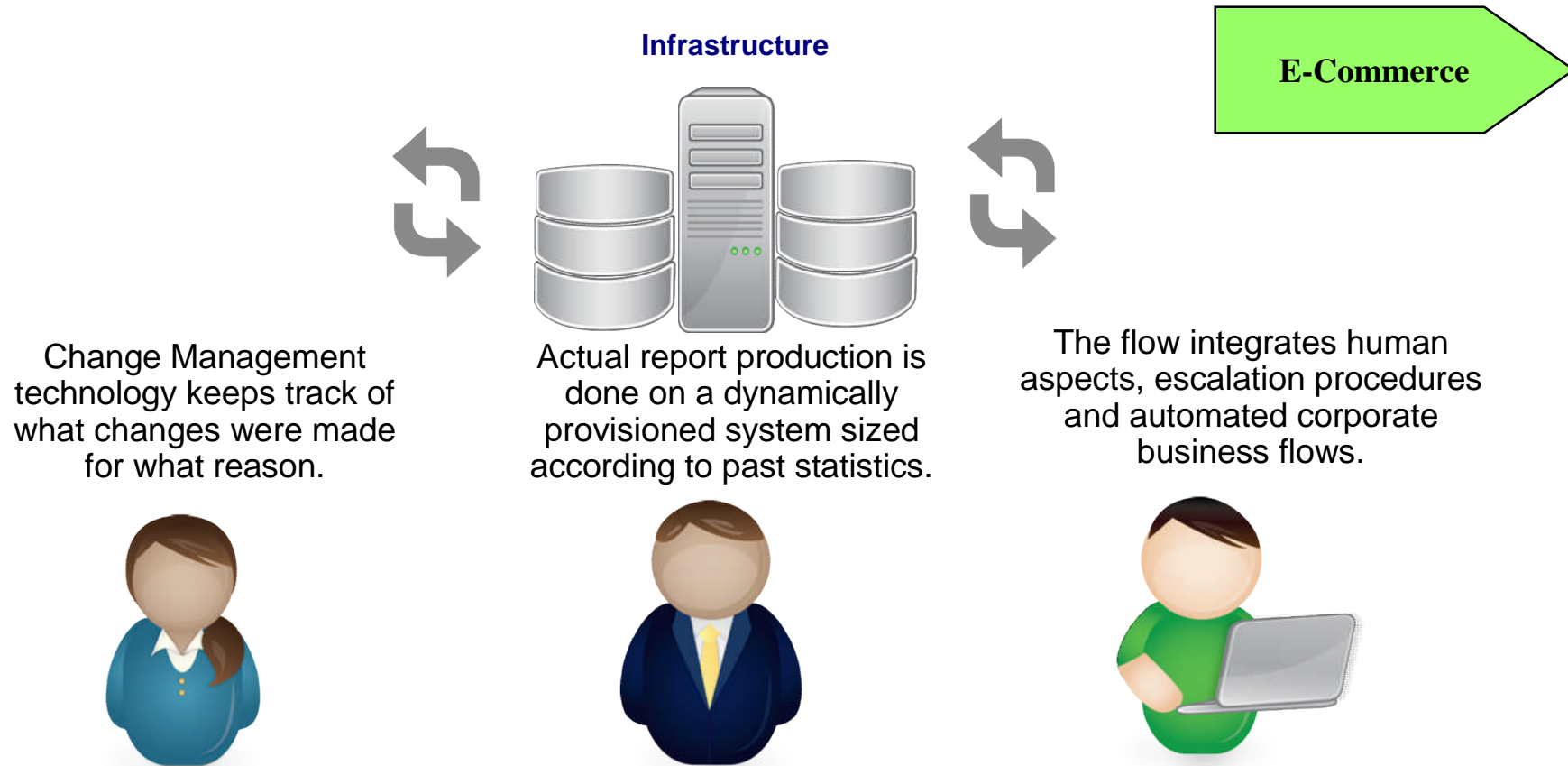
- Automated delivery of services
- Exact modification of existing workload for new businesses
- Effortless adherence to established organization processes



A reminder is sent to any section that has not submitted HR reports 3 hours before deadline, and final sending is done 98% on time.



... The system is updated automatically to reflect the change



- Golden copy of resources linked to the systems that deliver them
- Always a clear view of what's running – from a *Business Support* standpoint
- Optimization across the system proceeds by iterations.

Concentrate on Value-Adding: View the Business Process step-by-step

Several interfaces around a unique object describing the progress of delivery

Visibility

Offer modeling for application developers, dashboards for administrators, and the personal Self-Service request list for Business Users



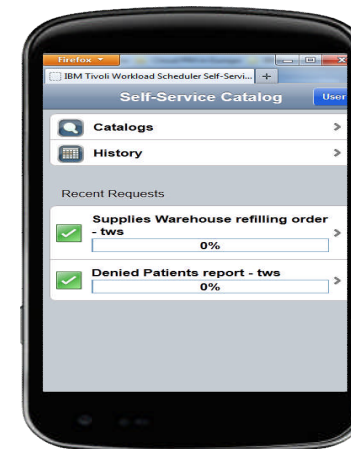
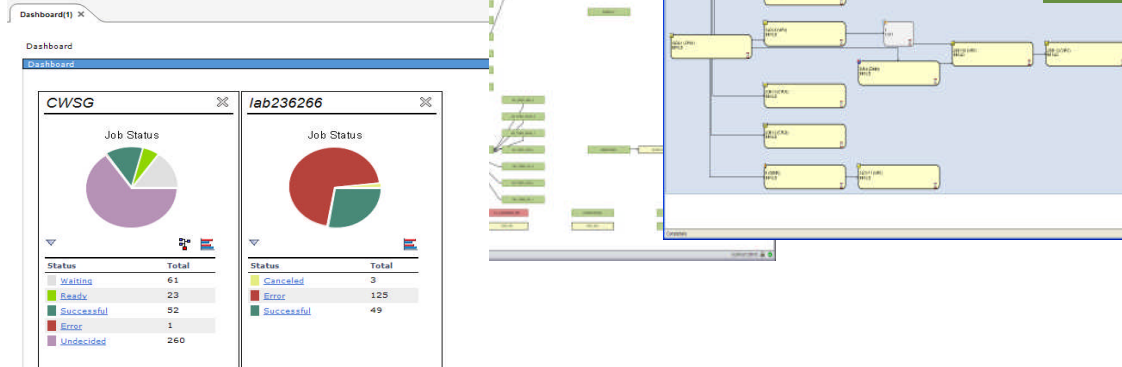
Rich Browser views, Simplified Mobile interface

Role-based interface for every duty

- Workload modeler, Administrators, Operators, Analysts as the main role facing the US
- Personal workload summary for business users
- All product functions available on a browser

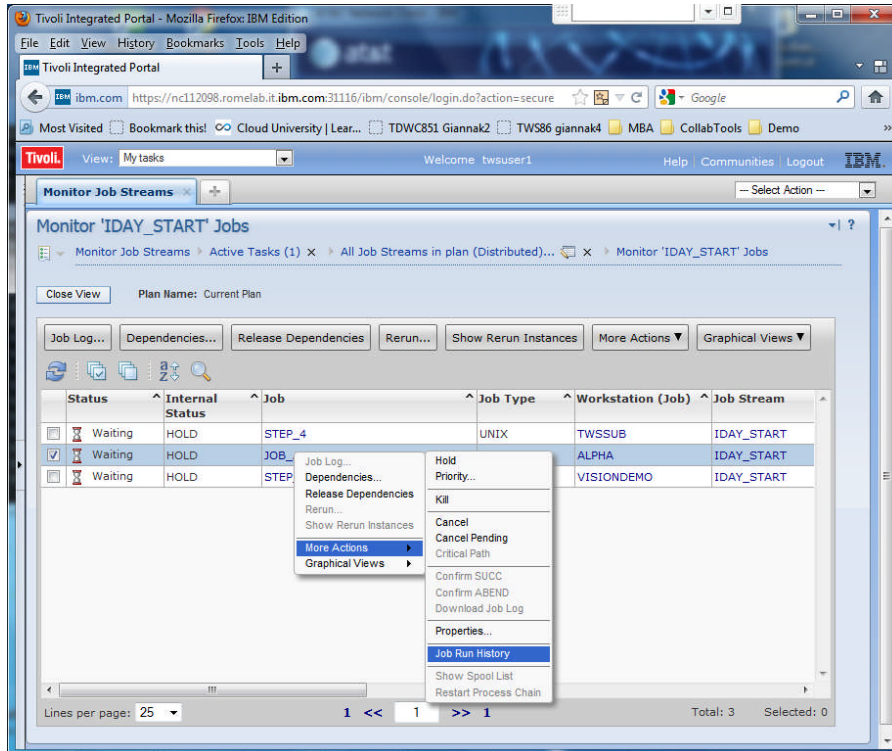
Unique object model

- Immediately updated model with concurrent locking
- Same objects to reach mainframe, distributed, any application
- Job concept representing all business construct: repetition, sequencing, resource sharing



Govern and keep control at all times

Map Business policies into the product with standard and shared constructs



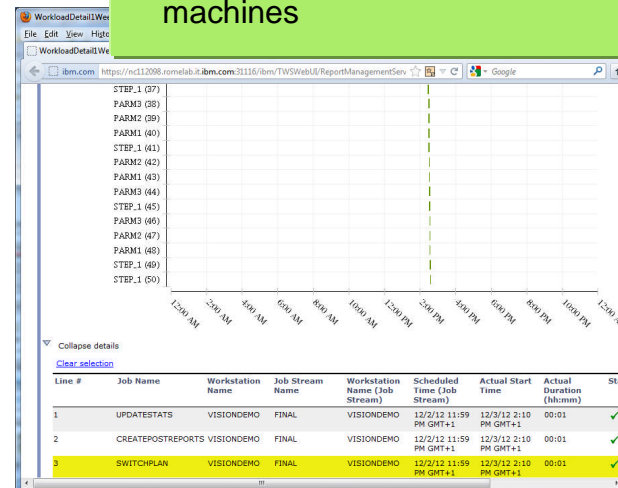
- Unattended control: Policies and Reliability**
- When rules are decided, they can be enforced strictly with low effort. Service is delivered automatically and within boundaries
 - Pervasive auditing to leave a track
 - Automated reliability thanks to corrective actions
 - Trivial collection of CPU consumption across IT
- Dynamic Workload Automation**
- Demand detail of infrastructure to scheduling administrator
 - Ensure systematic and cheap reliability
 - Report production takes place on a cloud of machines

Control

Efficiency in bringing small changes, using templates and copy-paste of processes.

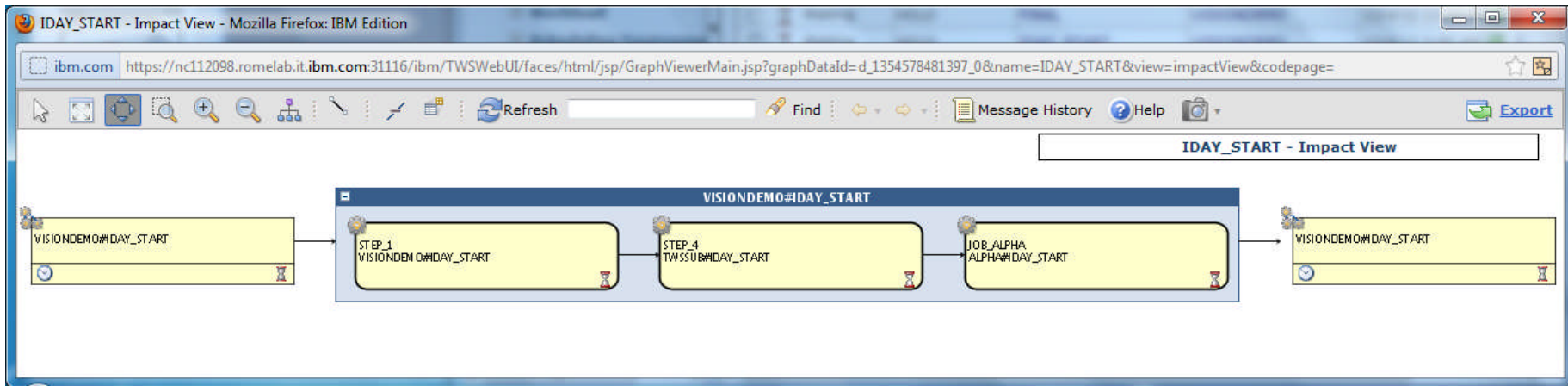


Change as required without the delivery risk



Push the automation frontier further every day

Automatic system updating through statistic collection and update policies



Automation

Sensitive to critical path, filled with embedded policies, Workload Automation hosts the description of autonomous business processes



Save on repetition and chart the unpredictable

System statistical collection

- Future prediction based on live statistics
- Reports delivering most impacting failures
- Return code dictionary easy to build on enterprise

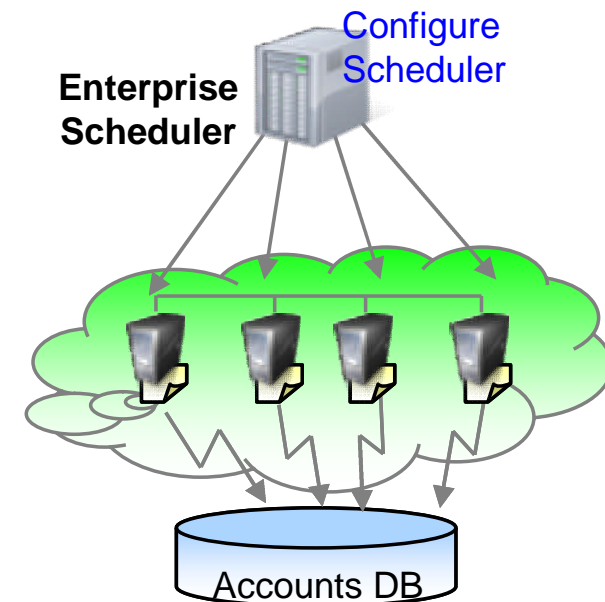
Lower the failure rate

- Recovery actions to reach 1%, 0.5%, 0.2% of job failure without recovery
- Conditional logic to plan for special cases
- Prepare ERP jobs well with specialised panels (SAP, Oracle, Datastage, Cognos)

Why IBM

More differentiating capabilities

- Large and very active customer base
- Alignment of workload to business priorities
- Routinely take the best node in the network to accelerate execution
- Automate reaction to tense critical path
- Automate remedial actions as first reaction to risk
- Special remedial actions propagated in the cloud
- Proactive alerting of users about potential risk conditions
- Simple per-job pricing



TUC Additional Resources

Please visit the Tivoli User Community to download the replay of this webcast and presentation slides and to gain access to other exclusive content – just for members!

To Login or Join: www.tivoli-ug.org

Cloud Tech Zone <http://tivoli-ug.org/tech-zones/cloud-and-data-center-transformation/>

Continue the discussion in our **Community Forums** where you can find questions and answers posted from today's webcast:

www.tivoli-ug.org/community-forums/default.aspx

Additional Links for members:

IBM SmartCloud Workload Automation product page:

<http://www-142.ibm.com/software/products/us/en/smarworkauto>

Link to whitepaper:

<https://www14.software.ibm.com/webapp/iwm/web/signup.do?source=swg-101HY86W>

Go one step further

Product home page

- <http://www-01.ibm.com/software/tivoli/products/workloadautomation>

Have a look at some product demos

- https://www.ibm.com/services/forms/signup.do?source=swg-spsm-tiv-bsm-dm&S_PKG=IBM-Tivoli-Workload-Automation

Tour the Best Practice and additional documentation page for a more practical feeling

- <https://www.ibm.com/developerworks/mydeveloperworks/wikis/home?lang=en#/wiki/Tivoli%20Workload%20Scheduler/page/Home>

Now we have time for YOUR question!



Thank You for Joining Us today!

Go to www.ibm.com/software/systemz/events/calendar to:

- ▶ Replay this teleconference
- ▶ Replay previously broadcast teleconferences
- ▶ Register for upcoming events