

# *How to Diagnose IMS Connect Performance Problems*

*Jim Martin, Fundi Software  
Suzie Wendler, IBM*



## Agenda

- Define the challenges
- Investigate the IMS Connect Environment
- Review the roles of the products and tools within the IMS Connect space
- Investigate how to use these tools and techniques to report and analyze performance at the IMS Connect boundary



# IMS Connect Today

- TCPIP Server for IMS Transactions
  - Provides Socket based connections
  - Provides conversion/translation for TCPIP clients
  - Leverages the IMS OTMA capability
- Widely used in production environments
  - Capable of high transaction volumes
  - Scalable
- Supports
  - User-written partner applications
  - IMS clients - Integration Suite of capabilities
  - Vendor applications



# IMS Connect Performance Considerations

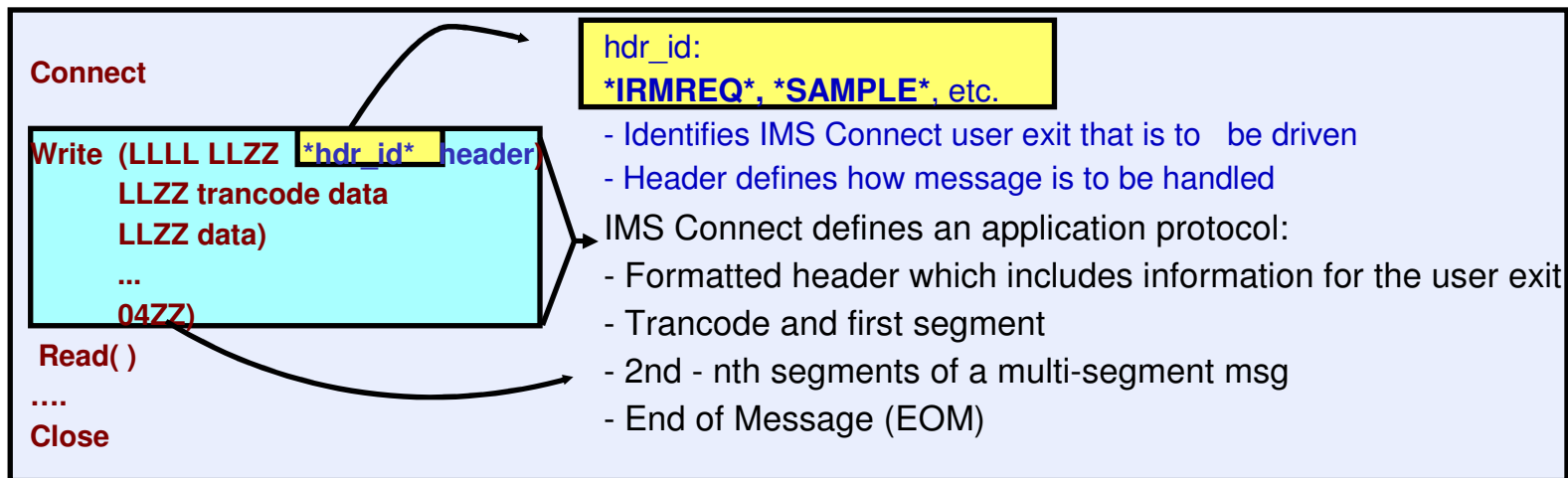
- Possible bottlenecks can occur as a result of:
  - Network connection
  - Application error
  - Application design
    - Not understanding the interaction with IMS Connect and IMS
  - IMS Connect configuration
  - IMS
  - ...

## First Things First

- Design considerations
  - IMS Connect supports a direction connection application model:
    - Natively synchronous (connection-oriented), supports asynchronous (connectionless)
      - Direct correlation between input and output
    - Potential issues with program-to-program switches when spawning multiple transactions
    - Designing for failure:
      - Determine what to do if connection is unavailable
      - Understand IMS actions
      - Detect error codes - TCP/IP, IMS Connect, IMS

# Basic Considerations

- Input Messages:
  - LLLL = Length of msg including all data segments and the EOM
  - Specifications in the header control the interaction with IMS Connect
    - Commit mode
    - Synchronization levels – None or Confirm
  - Verb set defines synchronous/asynchronous interaction



## Basic Considerations ...

- Input Messages ...



**Sending just one write with all the data improves performance over multiple writes**

- To prevent multiple writes from causing performance problems with IMS Connect, make sure the IMS Connect PORT statement specifies NODELAYACKS

***Problem symptom*** – erratic elongation of response time



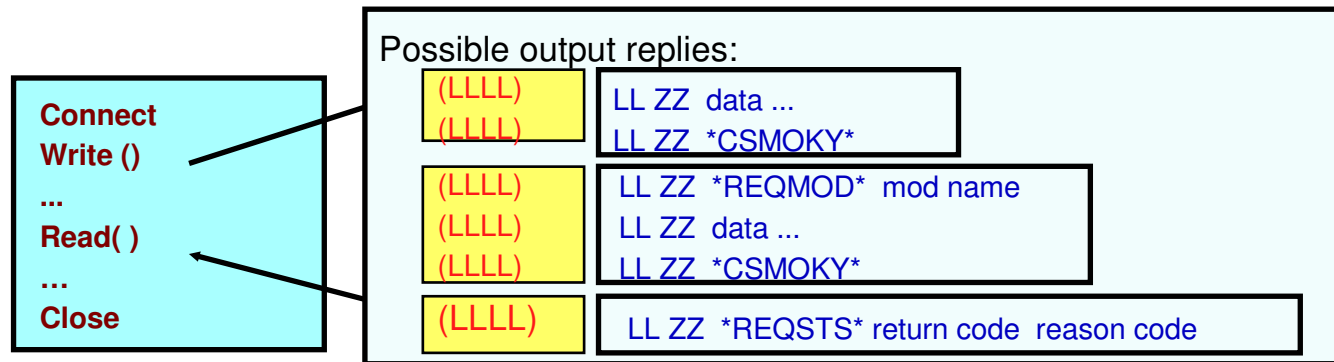
**Sending data incorrectly can cause erratic behavior**

- Invalid header
- Amount of data that does not match the length field or has no EOM indicator

***Problem symptom*** – possible hang on the socket

## Basic Considerations ...

- Output Messages:



- Replies from IMS Connect can be
  - IMS application output messages
  - DFSxxxxx messages
  - Messages from IMS Connect that carry special headers
    - CSMOKY, REQSTS, REQMOD



The remote application should be designed to understand the output replies that are possible based on the interactions with IMS



# Basic Considerations ...

- Output Messages – ACK/NAK
  - Some output messages from IMS Connect require an ACK/NAK message
    - Sync level=confirm, Send-then-commit (CM1) output replies
    - All Commit-then-send (CM0) output messages
    - Some DFSxxxxx error messages
      - Table 47 in the IMS Connect Guide and Reference



**Application design in ACK/NAK situations affects the use of the socket**  
- Application should issue a READ after an ACK/NAK to determine when the socket is free for reuse

**Problem symptom** – possible hang on the socket and DUPCLNT

# Basic Considerations ...

- Timing out
  - How long should a process wait?
    - What action should be taken when a timeout occurs?
  - Setting timeout values
    - IMS Connect - timeout value in the configuration
    - IMS Connect client program - timer value in header
    - Remote client environment

**If specifying long wait values, check out the TCP/IP values for:**  
**KEEPALIVEOPTIONS or INTERVAL**  
- allows TCP/IP to maintain a connection that can be inactive for long periods of time

**★** *Problem symptom* – connection keeps timing out before the timeout value expires



## The Bottom Line

- Successful connectivity is the first step
- Designing for failure is the second step
- The next set of steps
  - Stabilize the production environment
    - Performance monitoring
    - Problem determination
    - Reporting and auditing

## The Next Set of Steps

- Major Issue
  - IMS Connect is a black box
    - Performance Monitoring is difficult or impossible
    - Problem determination especially in real time is difficult at best
      - TCP/IP packet traces
      - IMS Connect Dump
      - HWS Recorder trace
      - IMS Connect internal traces
- An easier solution ...



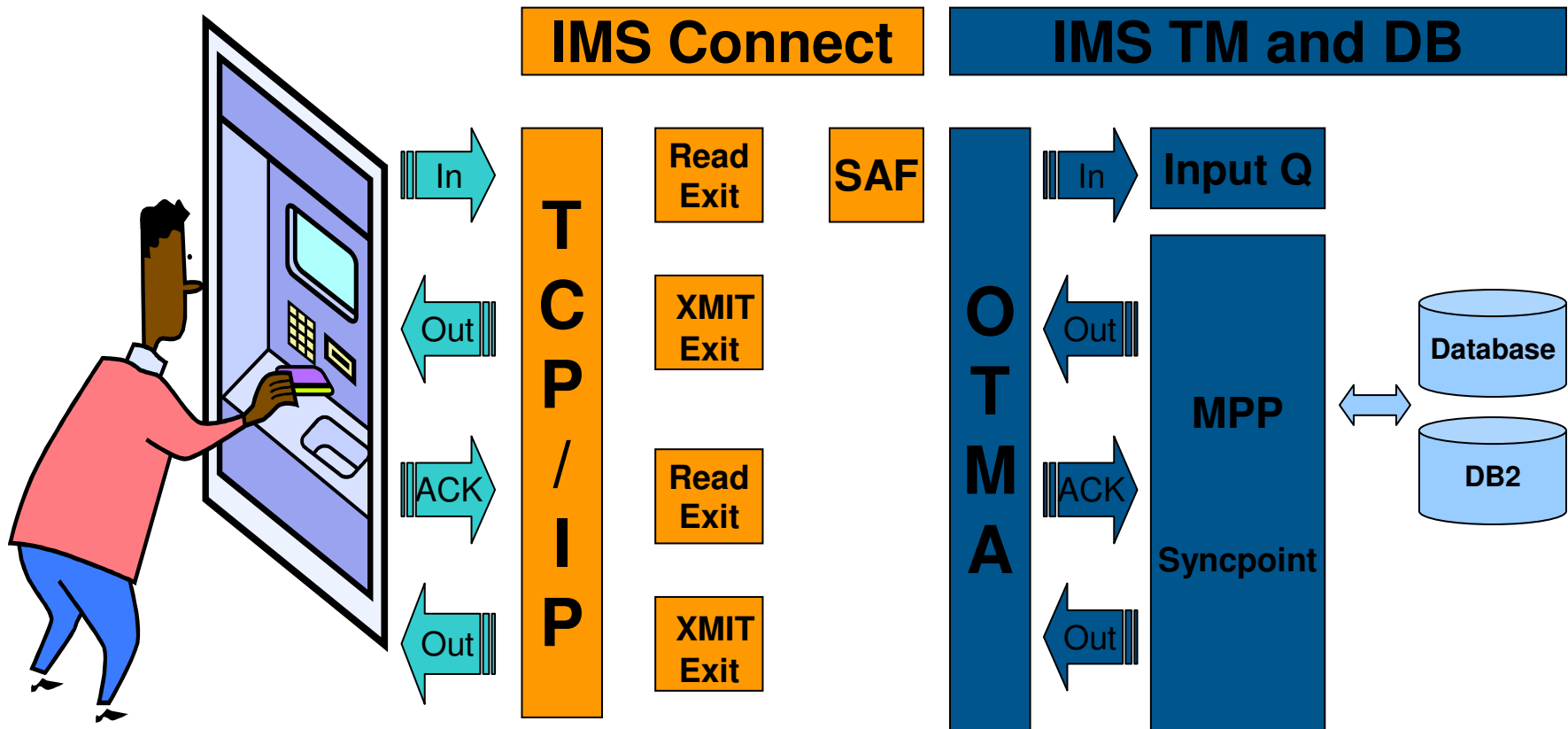
## Tools Used For Performance Monitoring and reporting

- IMS Connect Extensions
  - Provides instrumentation data used for performance reporting
- IMS Performance Analyzer
  - Provides numerous reports using IMS Connect Extensions instrumentation data
  - Merges IMS and IMS Connect instrumentation data for reporting

## Tools Used For Analysis

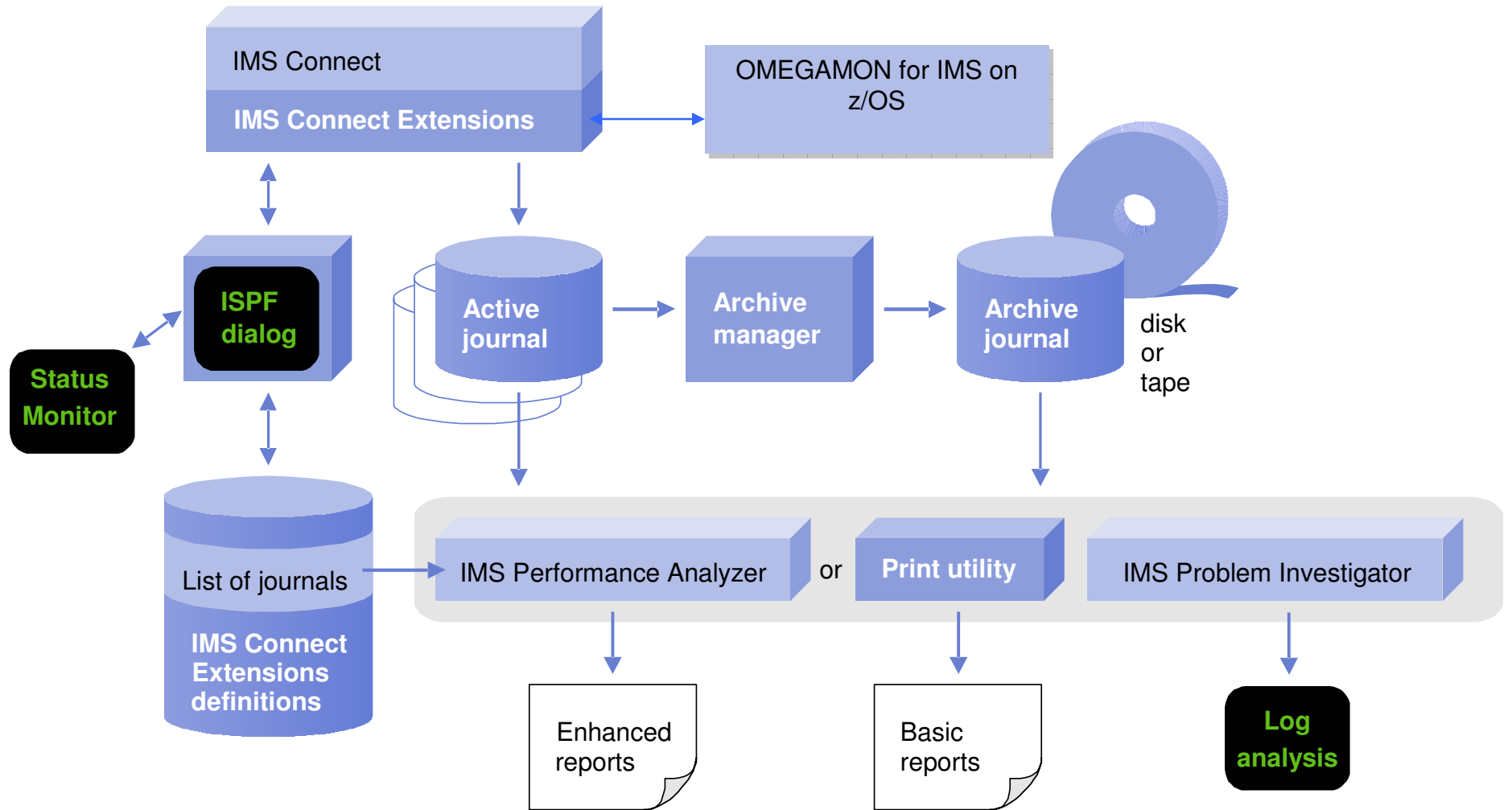
- IMS Problem Investigator
  - Provides detailed analysis of IMS and IMS Connect Extensions instrumentation data
- OMEGAMON™ for IMS Connect
  - Provides real-time IMS Connect response information

# Connect Transaction Lifecycle



**Commit Mode=1 and SYNCLEVEL=CONFIRM requires Client ACK for application syncpoint to proceed!**

# Event collection and reporting





# Status Monitor: Connect Statistics

Global view of activity across IMS Connect system, by system or port

**File Menu Form Help**

---

Status Monitor - System Overview Row 1 of 12

Command ==> \_\_\_\_\_ Scroll ==> CSR

Interval . . . 3 1. **20 Seconds** 3. **01-15 Minutes** 5. **31-45 Minutes** 7. **Hour**  
 2. **Minute** 4. **16-30 Minutes** 6. **46-60 Minutes**

12.41.45		Input	Input	Input	Input	Accepted	ACK
Name	Type	Message	Length	Length	Bytes	Message	Message
		Total	Total	Max	Per Sec	%Total	Total
PAPI04	HWS	240	24640	120	27.38	100%	120
IMD3	DS	0	0	0	0.00	0%	0
IMD4	DS	240	24640	120	27.38	100%	120
I9DV	DS	0	0	0	0.00	0%	0
HWSJAVA0	EXIT	0	0	0	0.00	0%	0
HWSSMPL0	EXIT	240	24640	120	27.38	100%	120
HWSSMPL1	EXIT	0	0	0	0.00	0%	0
HWSIMS01	EXIT	0	0	0	0.00	0%	0
HWSIMS00	EXIT	0	0	0	0.00	0%	0

<b>INPUT</b>	Input Messages
<b>RTPIPE</b>	Resume TPIPEs
<b>SENDONLY</b>	Send Only Messages
<b>SENTERR</b>	Sent Unsuccessful
<b>SENTOK</b>	Sent Successful
<b>ACCEPTED</b>	Accepted Messages
<b>REJECTED</b>	Rejected Messages
<b>ROUTED</b>	Routed Messages
<b>ACK</b>	ACK Count
<b>NAK</b>	NAK Count
<b>DEALLOC</b>	DEALLOC Count
<b>RETURNED</b>	Returned Messages
<b>REJEXER</b>	Rejected by EXER
<b>REJSEC</b>	Rejected by security
<b>REJPACE</b>	Rejected by pacing
<b>REJROUTE</b>	Rejected by routing
<b>REQUEST</b>	Message requests
<b>IGNORE</b>	Messages ignored

**Display historical information for the following definition types:**

<b>HWS</b> IMS Connect system	<b>Exit</b> User Exits
<b>DG</b> Datastore Groups	<b>DS</b> Datastores

# Active sessions

- View a snapshot of all active sessions
- Identify sessions with long wait times
- Use filters to select sessions based on conditions
- Use forms to customize the display

Client ID
TranCode
User ID
Port
Socket
Event
Session Start Time
Session Wait Time
Original Datastore
Target Datastore

Filter sessions displayed by time in current status

Show or hide persistent sockets in Read Prepare status

Sort by any column

```

File  Menu  Form  Filter  Help
-----
Active Sessions
Command ==>
Session Wait Time . . . [ ] (Seconds) [ ] Include persistent sockets
-----
Port  Socket  Event  Session Start Time  Session Wait Time
-----
3702  2  READ socket  08.49.53.386379  06.28.59.487394
3702  2  Message Exit returned from  08.49.53.386379  06.28.59.487394
3702  2  Message sent to OTMA  08.49.53.386379  06.28.59.487394
3702  2  Message received from OTMA  08.49.53.386379  06.28.59.487394
3702  2  Message Exit returned from  08.49.53.386379  06.28.59.487394
3702  2  Trigger Event  08.49.53.386379  06.28.59.487394
    
```

# Status view

- View details based on the state of the session.
- Identify the predicted socket state
- List up to the last 30 events for the session

```

File  Menu  Help
-----
Active Sessions - Session Status                               Row 1 of 39
Command ==> _____ Scroll ==> PAGE

IMS Connect:
Port . . . . . : 3702      Socket . . . . . : 2
Event Key . . . . . : BD8498373138B162
Session Start Time . . . . . : 2005-08-26 08.49.53.386379
Last Trace Time . . . . . : 2005-08-26 08.49.53.793750
Session wait time . . . . . : 06.28.59.487394

READ exit:
Return Code . . . . . : 0      Reason Code . . . . . : 00
Transaction . . . . . : PART   User ID . . . . . : CMW
Override LTERM name . . . . . :      Exit name . . . . . : HWSSMPLO
Original Datastore . . . . . : IMD3  Target Datastore . . . . . : IMD3
Client ID . . . . . : TRNBS001
Family . . . . . : 2      Port . . . . . : 1136
IP address . . . . . : 172.17.69.87

WRITE/EXER exit:
Return Code . . . . . : 0      Reason Code . . . . . : 00

Predicted socket status:
P006 - Waiting to send output to remote client

Event Record Trace:
Event=3E, Message Exit returned from READ, XMIT or EXER
Event=3D, Message Exit entered for READ, XMIT or EXER
Event=42, Message received from OTMA
Event=41, Message sent to OTMA
Event=3E, Message Exit returned from READ, XMIT or EXER
Event=3D, Message Exit entered for READ, XMIT or EXER
Event=49, READ socket
Event=3C, Prepare READ socket
    
```

Trace of last 30 events

View the predicted socket state



## Performance reporting: IMS PA Connect reports

- **Transaction transit reports**
  - Transit Analysis: Summarized Connect activity
  - Transit Log: Detailed information for every Connect transaction
  - Transit Extract: Export data to DB2 or spreadsheet
- **Resource usage**
  - Port Usage: Measure Port usage for over-utilization
  - Resume Tpipe: Monitor Resume Tpipe activity
  - ACK/NAK: Summarize transaction success and failure
  - Exception Events: See why transactions are failing
- **Trace reports**
  - Trace transaction events: Track individual transaction events

# IMS PA V3: Transit analysis report

**Total response time**      **Input**      **IMS internal response time**      **Output**

IMS Performance Analyzer 3.3  
IMS Connect Transit Analysis - HWSFROD1

From 21Apr2004 16.30.00.05 To 21Apr2004 16.40.00.09 Page 6

TranCode	Message Count	Response Time	Input					-Process-			Output			Rate Time	
			Pre-OTMA	READ	Sock	READ	Ex	SAF	OTMA	Confirm	Post-OTMA	XMIT	Ex	/Sec	Outs
BALANCE	197	Avg	278.488	257.268	252.434	4.496	0.000	19.520	0.000	1.699	0.119	1	2	0	
		80%	278.488	257.268	252.434	4.496	0.000	19.520	0.000	1.699	0.119				
DEPOSIT	67	Avg	247.674	226.997	222.267	4.395	0.000	18.934	0.000	1.742	0.118	1	0	0	
		80%	247.674	226.997	222.267	4.395	0.000	18.934	0.000	1.742	0.118				
LOGON	123	Avg	388.525	314.452	297.292	7.614	8.853	67.305	0.000	6.767	0.162	1	0	21	
		80%	392.847	319.171	302.458	7.614	9.005	81.317	0.000	11.736	0.203				
ORDER	265	Avg	357.142	275.655	262.408	6.964	5.809	73.930	0.000	7.556	0.144	1	3	0	
		80%	457.589	310.779	297.228	7.556	6.343	152.839	0.000	13.602	0.201				
WITHDRAW	85	Avg	273.333	249.026	238.302	5.147	5.130	21.257	0.000	3.049	0.117	1	1	0	
		80%	285.266	260.648	249.320	6.316	6.514	22.614	0.000	4.277	0.124				
Total	737	Avg	594.986	344.789	339.349	0.438	0.131	182.667	15.630	51.899	0.180	1	1	7	
		80%	997.382	535.249	527.124	1.544	0.905	387.900	221.726	141.791	0.928				

# Combined Transit analysis report

IMS Performance Analyzer 4.1  
Combined IMS and Connect Summary  
 COMBSUMM Printed at 11:15:00 04May2006      Data from 11.16.33 18Apr2006 to 12.04.17 18Apr2006

Connect Input									
Trancode	Tran Count	Avg CON Resp Time	Avg Input Time	Avg ReadSock In Time	Avg ReadExit Time	SAF	Avg Call Time	Avg OTMAproc Time	Avg IMS Resp Time
BALANCE	14	57	0	0	0	0	0	51	28
DEPOSIT	432	540	0	0	0	0	0	539	522
ORDER	1458	202	5	5	0	0	0	17	16
WITHDRAW	16	3035	214	214	0	0	0	605	332

OTMA response time

IMS internal response time

Connect response time

IMS transit breakdown and resource usage						
	Avg InputQ Time	Avg Process Time	Avg OutputQ Time	Avg Total Time	Avg CPU Time	Avg DB Call Count
...	5	54	0	60	3	2
	6	7	4203	4216	2	1
	8	213	17528	17749	1	1
	8	291	2251	2549	3	1

Connect Output			
	Avg Confirm Time	Avg Output Time	Avg XmitExit Time
...	6	0	0
	0	1	0
	179	0	0
	249	1967	0

- Combined IMS Connect and IMS log metrics
- Design a Form to include required information only
- No restriction on report page width
- Export to CSV or DB2 as an alternative to reporting

# Combined Connect Trace

IMS Performance Analyzer 4.1  
Trace from 18Apr2006 12.03.10.59

Start/+Relative	Elapsed	ID	Description	Information
12.03.10.594975	*Start*	3C	Prepare Read Socket	Key=BEAC39B678481101 Depth=3 Port=3101 Sock=4
+0.000040	0.040	49	Read Socket	Port=3101 Sock=4
+0.000054	0.013	3D	READ Message Exit called	Exit=HWSSMPL0
+0.000090	0.035	3E	READ Message Exit returned	RC=00 RSN=00 IP=172.17.69.25 DSTarg=I9DE TC=ATMWDRAW
+0.000208	0.117	41	Message sent to OTMA	Commit Mode=1 Synch Level=NONE Socket Type=Transaction TPipe=3101 MSG=Transaction
<b>Start of Connect Transaction</b>				
+0.000845	0.636	01	Input Message	Org=I9DE/BEAC39B6792B1340 Proc=I9DE/BEAC39B6792B1340 0000 'ATMWDRAW ACCOUNT=456-212-122 AMOUNT=\$1000.000'
+0.006000	5.154	35	DL/I Enqueue Message	Org=I9DE/BEAC39B6792B1340 Proc=I9DE/BEAC39B6792B1340
+0.008977	2.977	31	DL/I GU from Message Queue	Org=I9DE/BEAC39B6792B1340 Proc=I9DE/BEAC39B6792B1340 PST=0003
+0.012825	3.847	03	Output Message	Org=I9DE/BEAC39B6792B1340 Proc=I9DE/BEAC39B67C169661 0000 'WITHDRAW SUCCESSFUL, BALANCE=\$3456.12'
+0.012835	0.010	35	DL/I Enqueue Message	Org=I9DE/BEAC39B6792B1340 Proc=I9DE/BEAC39B67C169661 PST=0003
+0.014799	1.963	37	Syncpoint	Org=I9DE/BEAC39B6792B1340 Proc=I9DE/BEAC39B6792B1340
+0.017404	2.605	33	Free Message	Org=I9DE/BEAC39B6792B1340 Proc=I9DE/BEAC39B67C169661
+0.020768	3.364	03	Output Message	Org=I9DE/BEAC39B6792B1340 Proc=I9DE/BEAC39B67C169661
+0.020775	0.006	31	DL/I GU from Message Queue	Org=I9DE/BEAC39B6792B1340 Proc=I9DE/BEAC39B67C169661 PST=0002
+0.159380	138.605	33	Free Message	Org=I9DE/BEAC39B6792B1340 Proc=I9DE/BEAC39B6792B1340
+2.031977	1.872.596	42	Message received from OTMA	TPipe=3101 MSG=Data Sense=0000
+2.035409	3.432	42	Message received from OTMA	TPipe=3101 MSG=Commit Conf CONFIRM=Committed Sense=0000
+2.035542	0.133	3D	XMIT Message Exit called	Exit=HWSSMPL0
+2.035584	0.041	3E	XMIT Message Exit return	RC=00 RSN=00
+2.035707	0.122	4A	Write Socket	Port=3101 Sock=4
+2.035737	0.030	0C	Begin Close Socket	Port=3101 Sock=4
+2.035842	0.105	0D	End Close Socket	Port=3101 Sock=4
+2.035865	0.022	48	Trigger event	Trigger=CLOSE
<b>End of Connect Transaction</b>				



## Form-based reporting

- Tailor transaction transit reporting to meet your specific requirements
- IMS Log and Connect transit reports, including combined reports
- Choose from any of the 20 supplied samples...



# Form-based reporting

```

Report Forms                                     Row 1 to 20 of 20
Command ==> _____ scroll ==> PAGE
Report Forms Data Set . . : JCH.IMSPA.FORM3

```

Name	Type	Description	Changed	ID
BADRESP	SUMMARY	Bad Transaction Response Time	2006/06/09 00:00	IMSPA
COMBLIST	LIST	Combined IMS and Connect List	2006/06/09 00:00	IMSPA
COMBSUMM	SUMMARY	Combined IMS and Connect Summary	2006/06/09 00:00	IMSPA
COMPLVL	SUMMARY	Transaction Completion Summary	2006/06/09 00:00	IMSPA
CONNACK	SUMMARY	Connect ACK/NAK Summary	2006/06/09 00:00	IMSPA
CONNLIST	LIST	Connect Transit Log	2006/06/09 00:00	IMSPA
CONNPLEX	SUMMARY	Connect PLEX Usage Summary	2006/06/09 00:00	IMSPA
CONNTCOD	SUMMARY	Connect Analysis by Trancode	2006/06/09 00:00	IMSPA
CPUHIGH	SUMMARY	High CPU Usage Transactions	2006/06/09 00:00	IMSPA
DASH	SUMMARY	Transaction Dashboard	2006/06/09 00:00	IMSPA
MSGLEN	SUMMARY	Message Length Analysis	2006/06/09 00:00	IMSPA
QTYPE	SUMMARY	Queue-type Summary	2006/06/09 00:00	IMSPA
SMQLIST	LIST	SMQ Transaction Transit Log	2006/06/09 00:00	IMSPA
SMQTCOD	SUMMARY	SMQ Transaction Analysis	2006/06/09 00:00	IMSPA
TRANCLAS	SUMMARY	Transit Analysis by Class	2006/06/09 00:00	IMSPA
TRANINTV	SUMMARY	Interval Transaction Analysis	2006/06/09 00:00	IMSPA
TRANLIST	LIST	Transaction Transit Log	2006/06/09 00:00	IMSPA
TRANPRTY	SUMMARY	Transit Analysis by Priority	2006/06/09 00:00	IMSPA
TRANRESU	SUMMARY	Transaction Resource Usage	2006/06/09 00:00	IMSPA
TRANTCOD	SUMMARY	Transit Analysis by Trancode	2006/06/09 00:00	IMSPA



## OMEGAMON™ for IMS Connect

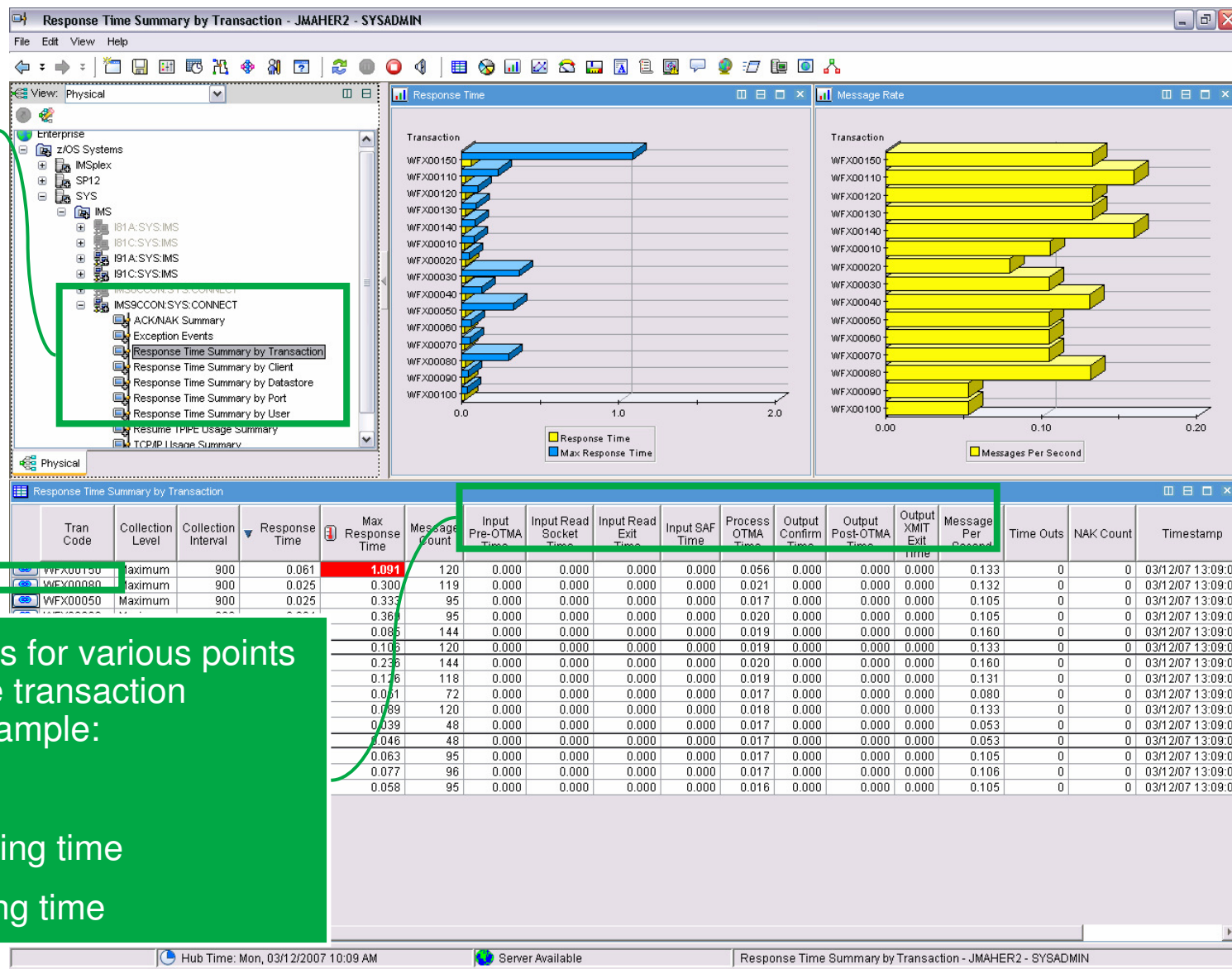
- First Real-time monitoring tool for IMS Connect
  - Uses Connect Extensions Publisher API
  - Obtains IMS Connect event records via the API

# Response Time Summary by Transaction

Summarize by DS, User ID, Port, and Client ID

Click for details on each message

Response times for various points in the life of the transaction appear. For example:  
 Read-Exit time  
 OTMA processing time  
 XMIT processing time



# Response Time Detail

Instantly identify transactions with long delays

Response Time Detail for Transaction - JMAHER2 - SYSADMIN

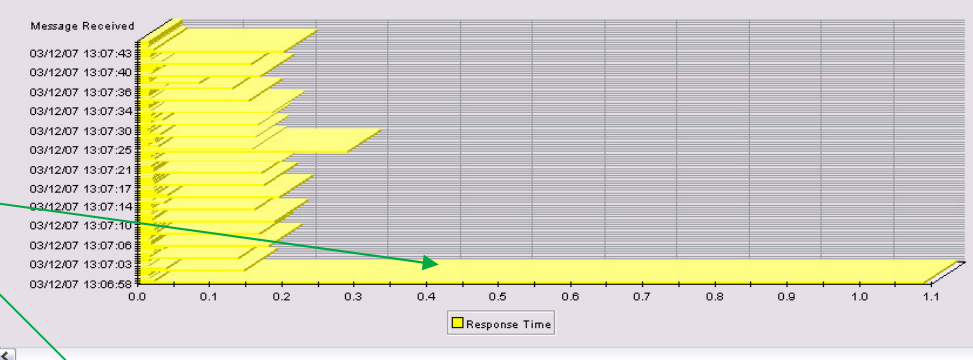
View: Physical

Enterprise

- z/OS Systems
  - IMSplex
  - SP12
  - SYS
    - IMS
      - I81A:SYS:IMS
      - I81C:SYS:IMS

Response Time Summary by Datasore  
 Response Time Summary by Port  
 Response Time Summary by User  
 Resume TPIPE Usage Summary  
 TCP/IP Usage Summary

Response Time for Transaction WFX00150



Response Time Detail for Transaction WFX00150

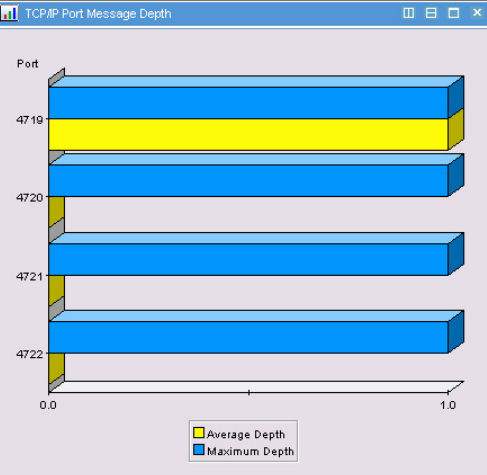
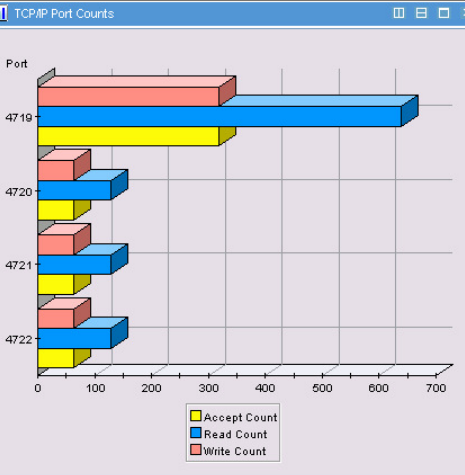
Tran Code	Target Datasore	Client ID	Port Number	User ID	Collection Level	Message Received Time	Response Time	Input Pre-OTMA Time	Input Read Socket Time	Input Read Exit Time	Input Read Exit Name	Input SAF Time	Process OTMA Time	Output Confirm Time	Output Post-OTMA Time	XMIT Exit Time	XMIT Exit Name
WFX00150	I91C	ICTDRVR	4719	JMAHE	Maximum	03/12/07 13:06:58	1.094	0.049	0.005	0.001	HWSIMS00	0.000	0.988	0.000	0.025	0.000	HWSIMS00
WFX00150	I91C	ICTDRVR	4719	JMAHE	Maximum	03/12/07 13:07:00	0.024	0.000	0.000	0.000	HWSIMS00	0.000	0.020	0.000	0.000	0.000	HWSIMS00
WFX00150	I91C	ICTDRVR	4719	JMAHE	Maximum	03/12/07 13:07:01	0.018	0.000	0.000	0.000	HWSIMS00	0.000	0.014	0.000	0.000	0.000	HWSIMS00
WFX00150	I91C	ICTDRVR	4719	JMAHE	Maximum	03/12/07 13:07:01	0.017	0.000	0.000	0.000	HWSIMS00	0.000	0.014	0.000	0.000	0.000	HWSIMS00
WFX00150	I91C	ICTDRVR	4719	JMAHE	Maximum	03/12/07 13:07:01	0.020	0.000	0.000	0.000	HWSIMS00	0.000	0.017	0.000	0.000	0.000	HWSIMS00
WFX00150	I91C	ICTDRVR	4720	JMAHE	Maximum	03/12/07 13:07:02	0.148	0.000	0.000	0.000	HWSIMS00	0.000	0.144	0.000	0.002	0.000	HWSIMS00
WFX00150	I91C	ICTDRVR	4720	JMAHE	Maximum	03/12/07 13:07:02	0.041	0.000	0.000	0.000	HWSIMS00	0.000	0.038	0.000	0.000	0.000	HWSIMS00
WFX00150	I91C	ICTDRVR	4720	JMAHE	Maximum	03/12/07 13:07:03	0.017	0.000	0.000	0.000	HWSIMS00	0.000	0.014	0.000	0.000	0.000	HWSIMS00
WFX00150	I91C	ICTDRVR	4720	JMAHE	Maximum	03/12/07 13:07:03	0.021	0.000	0.000	0.000	HWSIMS00	0.000	0.016	0.000	0.000	0.000	HWSIMS00
WFX00150	I91C	ICTDRVR	4720	JMAHE	Maximum	03/12/07 13:07:03	0.017	0.000	0.000	0.000	HWSIMS00	0.000	0.014	0.000	0.000	0.000	HWSIMS00
WFX00150	I91C	ICTDRVR	4721	JMAHE	Maximum	03/12/07 13:07:03	0.140	0.000	0.000	0.000	HWSIMS00	0.000	0.138	0.000	0.001	0.000	HWSIMS00
WFX00150	I91C	ICTDRVR	4721	JMAHE	Maximum	03/12/07 13:07:04	0.018	0.000	0.000	0.000	HWSIMS00	0.000	0.015	0.000	0.000	0.000	HWSIMS00
WFX00150	I91C	ICTDRVR	4721	JMAHE	Maximum	03/12/07 13:07:04	0.022	0.000	0.000	0.000	HWSIMS00	0.000	0.018	0.000	0.000	0.000	HWSIMS00
WFX00150	I91C	ICTDRVR	4721	JMAHE	Maximum	03/12/07 13:07:05	0.022	0.000	0.000	0.000	HWSIMS00	0.000	0.017	0.000	0.000	0.000	HWSIMS00
WFX00150	I91C	ICTDRVR	4721	JMAHE	Maximum	03/12/07 13:07:05	0.037	0.000	0.000	0.000	HWSIMS00	0.000	0.033	0.000	0.000	0.000	HWSIMS00
WFX00150	I91C	ICTDRVR	4722	JMAHE	Maximum	03/12/07 13:07:06	0.183	0.000	0.000	0.000	HWSIMS00	0.000	0.170	0.000	0.012	0.000	HWSIMS00
WFX00150	I91C	ICTDRVR	4722	JMAHE	Maximum	03/12/07 13:07:06	0.020	0.000	0.000	0.000	HWSIMS00	0.000	0.018	0.000	0.000	0.000	HWSIMS00
WFX00150	I91C	ICTDRVR	4722	JMAHE	Maximum	03/12/07 13:07:07	0.020	0.000	0.000	0.000	HWSIMS00	0.000	0.015	0.000	0.000	0.000	HWSIMS00
WFX00150	I91C	ICTDRVR	4722	JMAHE	Maximum	03/12/07 13:07:07	0.017	0.000	0.000	0.000	HWSIMS00	0.000	0.014	0.000	0.000	0.000	HWSIMS00
WFX00150	I91C	ICTDRVR	4722	JMAHE	Maximum	03/12/07 13:07:07	0.019	0.000	0.000	0.000	HWSIMS00	0.000	0.014	0.000	0.000	0.000	HWSIMS00
WFX00150	I91C	ICTDRVR	4719	JMAHE	Maximum	03/12/07 13:07:09	0.169	0.000	0.000	0.000	HWSIMS00	0.000	0.163	0.000	0.002	0.000	HWSIMS00
WFX00150	I91C	ICTDRVR	4719	JMAHE	Maximum	03/12/07 13:07:09	0.027	0.000	0.000	0.000	HWSIMS00	0.000	0.022	0.000	0.000	0.000	HWSIMS00
WFX00150	I91C	ICTDRVR	4719	JMAHE	Maximum	03/12/07 13:07:10	0.025	0.000	0.000	0.000	HWSIMS00	0.000	0.018	0.000	0.000	0.000	HWSIMS00

Hub Time: Mon, 03/12/2007 10:11 AM    Server Available    Response Time Detail for Transaction - JMAHER2 - SYSADMIN

# TCP/IP Usage Summary

Arrival rates, bytes read and written, and message count by port.

- ⊕ 191A:SYS:IMS
- ⊕ 191C:SYS:IMS
- ⊕ IMS9CCON:SYS:CONNECT
- ⊕ IMS9CCON:SYS:CONNECT
- ⊖ ACKNAK Summary
- ⊖ Exception Events
- ⊖ Response Time Summary by Transaction
- ⊖ Response Time Summary by Client
- ⊖ Response Time Summary by Datastore
- ⊖ Response Time Summary by Port
- ⊖ Response Time Summary by User
- ⊖ Resume TPIPE Usage Summary
- ⊖ **TCP/IP Usage Summary**
- ⊖ IMS Connect CPU Usage

Port	Jobname	Collection Level	Average Depth	Maximum Depth	Message Count	Accept Count	Read Count	Read Length	Input Read Average	ACK/NAK Read Average	Write Count	Write Length	MVS System	Sysplex Name	Identification Name	Timestamp
4722	IMS9CCON	Maximum	0	1	64	64	128	8073	0.000	0.000	64	29165	SYS	LPAR400J	IMS9CCON	03/12/07 10:27:38
4721	IMS9CCON	Maximum	0	1	64	64	128	8073	0.000	0.000	64	29165	SYS	LPAR400J	IMS9CCON	03/12/07 10:27:38
4720	IMS9CCON	Maximum	0	1	64	64	128	8073	0.000	0.000	64	29165	SYS	LPAR400J	IMS9CCON	03/12/07 10:27:38
4719	IMS9CCON	Maximum	1	1	319	319	638	40238	0.000	0.000	318	145233	SYS	LPAR400J	IMS9CCON	03/12/07 10:27:38

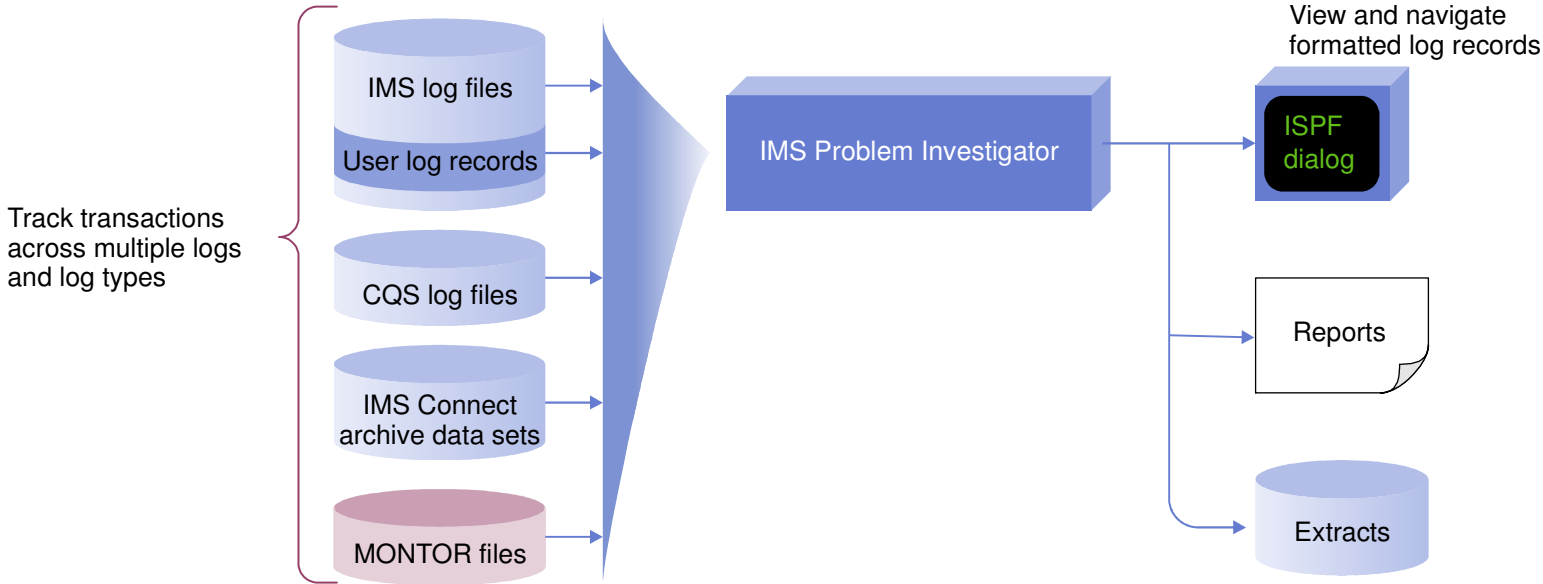
Hub Time: Mon, 03/12/2007 07:28 AM
Server Available
TCP/IP Usage Summary - JMAHER2 - SYSADMIN



# IMS PI Overview

- Analyze IMS problems from the various IMS data sources using the advanced features of IMS PI
- Merge IMS Log and Monitor, CQS and IMS Connect data for the complete end-to-end picture
- ISPF dialog with powerful record formatting and navigation aids
  - Relative and elapsed times between events
    - Allows evaluation of key performance components for IMS Connect and IMS

# IMS PI Data Sources



# Interactive problem determination

```

BROWSE      IPI000.QAAUTO.CI#D1CEX.ECL4.NONCNV10      Record 00000179 More: < >
Command ==>                                     Scroll ==> CSR
Forwards / Backwards . . 00.00.00.000001      Time of Day . . 17.10.56.000000
Code Description                               Date 2006-01-09 Monday      Time (Relative)
-----
/-----
___ A03C Prepare READ Socket                      13.13.13.269405
___ A049 READ Socket                               +0.234215
___ A049 READ Socket                               +0.234269
___ A03D Message Exit called for READ             +0.234329
___ A03E Message Exit returned from READ TranCode=PART +0.234385
___ A041 Message sent to OTMA Datastore=XCFMI8D1   +0.234484
___ 01 Input Message TranCode=PART Source=Connect  +0.235596
___ 35 Input Message Enqueue TranCode=PART         +0.235769
___ 08 Application Start TranCode=PART Region=0002 +0.236385
___ 5607 Start of a Unit-of-Recovery Program=DFSSAM02 +0.236386
___ 31 DLI GU TranCode=PART Region=0002           +0.236422
___ 5E SB Handler requests Image Capture Region=0002 +0.257467
___ 5E SB Handler requests Image Capture Region=0002 +0.257472
___ 03 Output Message Response LTerm=3101 Source=Connect +0.276641
___ 31 DLI GU TranCode=PART Region=0002           +0.276661
___ 33 Free Message                                +0.276902
___ 5610 Start Phase 1 syncpoint Region=0002       +0.276930
___ 37 Syncpoint Region=0002                       +0.276983
___ 33 Free Message                                +0.277126
___ 5612 End of Phase 2 Syncpoint Program=DFSSAM02 +0.277163
___ 07 Application Terminate TranCode=PART Region=0002 +0.277334
___ A042 Message received from OTMA Datastore=XCFMI8D1 +0.277636
___ A042 Message received from OTMA Datastore=XCFMI8D1 +0.277677
___ A03D Message Exit called for XMIT              +0.277794
___ A03E Message Exit returned from XMIT           +0.277846
___ A04A WRITE Socket                              +0.278031
___ A00C Begin CLOSE socket                        +0.278087
___ A00D End CLOSE socket                          +0.278767
___ A048 Trigger Event                             +0.278790
***** Bottom of Data *****
  
```

Start of Connect Transaction

Start of IMS transaction

Connect resumes

Connect Transaction ends after 0.278 seconds



# Record display

## 1. Compact mode showing time of day

```

BROWSE      WORKS00.IMSPI.I9DF.SLDS      Record 00000208 More: < >
Command ==>                               Scroll ==> CSR
Forwards / Backwards . . 00.00.00.000001  Time of Day . . 17.10.56.000000
Code Description                               Date 2006-03-16 Thursday  Time (Local)
/-----
01  Input Message TranCode=CEXTNONC           17.11.22.028553
31  DLI GU TranCode=CEXTNONC Region=0001      17.11.22.028563
5616 Start of protected UOW Region=0001      17.11.22.028826
08  Application Start TranCode=CEXTNONC Region=0002 17.11.22.029431
5607 Start of a Unit-of-Recovery Program=CEXTPGM 17.11.22.029432
5612 End of Phase 2 Syncpoint                 17.11.22.030726
07  Application Terminate TranCode=CEXTNONC Region=0002 17.11.22.030736
5E  SB Handler requests Image Capture Region=0002 17.11.22.030761
5E  SB Handler requests Image Capture Region=0002 17.11.22.030762
0901 SB Summary Statistics for PST           17.11.22.030765
5E  SB Handler requests Image Capture Region=0001 17.11.22.031942
5E  SB Handler requests Image Capture Region=0001 17.11.22.031944
50  Database Update Database=DI21PART Region=0001 17.11.22.035442
    
```

## 2. Expanded mode showing more information and time

```

Code Description                               Date 2006-03-16 Thursday  Time (Local)
/-----
01  Input Message                               17.11.22.028553
    UTC=17.11.22.018766 TranCode=CEXTNONC Userid=FUNTRM46 LTerm=FUNTRM46
    Terminal=SC0TCP46 OrgUOWID=I9DE/BE83010DOEB91341
    
```

## 3. Expanded mode showing LSN instead of time

```

Code Description                               Date 2006-03-16 Thursday  LSN
/-----
01  Input Message                               0000000000000000D0
    UTC=17.11.22.018766 TranCode=CEXTNONC Userid=FUNTRM46 LTerm=FUNTRM46
    Terminal=SC0TCP46 OrgUOWID=I9DE/BE83010DOEB91341
    
```

Use F10/F11 to switch modes

2. Find the offending transaction

1. Navigate to point-in-time

3. Start tracking

5. Select record to look for problem

4. Notice delay in transaction processing.  
 Display time as:  
 - Relative to a base  
 - Event latencies  
 - Normal time of day

```

BROWSE      WORKSO0.IMSPI.I9DE.SLDS      Record 00000680 More: < >
Command ==> F 'ATM'                      Scroll ==> CSR
Forwards / Backwards . . 00.00.00.000001  Time of Day . . 17.10.56.000000
Code Description                               Date 2006-03-16 Thursday  Time (Relative)
-----
TX 01      Input Message TranCode=ATMWDRAW      17.10.56.568098
   35      Input Message Enqueue TranCode=ATMWDRAW      +0.000016
   33      Free Message                               +0.004522
   08      Application start TranCode=ATMWDRAW Region=0002 +0.006010
5607      Start of a Unit-of-Recovery Program=ATMPROG      +0.006011
   01      Input Message TranCode=ATMWDRAW      +0.008618
   31      DLI GU TranCode=ATMWDRAW Region=0002      +0.008628
5616      Start of protected UOW Region=0002          +0.009376
   20      Database Open Database=ACCOUNTS Region=0002 +0.092504
   20      Database Open Database=ACCOUNTS Region=0002 +0.144345
   5E      SB Handler requests Image Capture Region=0002 +0.147327
   5E      SB Handler requests Image Capture Region=0002 +0.147329
   50      Database Update Database=ACCOUNTS Region=0002 +0.196349
   50      Database Update Database=ACCOUNTS Region=0002 +0.198155
S  50      Database Update Database=ACCOUNTS Region=0002 +0.198195
   50      Database Update Database=ACCOUNTS Region=0002 +0.198618
   50      Database Update Database=ACCOUNTS Region=0002 +0.198678
   03      Output Message Response LTerm=NEWYORK      +2.219906
   35      Output Message Enqueue LTerm=NEWYORK Region=0002 +2.219921
   37      Syncpoint Region=0002                    +2.219941
   37      Syncpoint message transfer Region=0002      +2.234516
   33      Free Message                               +2.238445
   03      Output Message Response LTerm=NEWYORK      +2.243091
   35      Output Message Enqueue LTerm=NEWYORK      +2.243123
   31      Communications GU LTerm=NEWYORK            +2.243159
   36      Output Message Dequeue LTerm=NEWYORK      +2.246271
   33      Free Message                               +2.247009
   33      Free Message                               +2.571643
5612      End of Phase 2 Syncpoint Program=ATMPROG      +2.572706
***** Bottom of Data *****
    
```

# Merged Log and Monitor

Transaction arrives and put onto the shared queue	01 Input Message TranCode=ATMWDRAW 17.10.56.568098
	35 Input Message Enqueue TranCode=ATMWDRAW 0.000016
	0702 CQSPUT COMMIT request completed 0.000085
	4E15 Scheduling IWAIT end Region=0002 0.005487
	08 Application Start TranCode=ATMWDRAW Region=0002 0.000420
	5607 Start of a Unit-of-Recovery Program=ATMPROG 0.000000
	4E64 DLA30 start Database=I/O PCB Region=0002 0.000002
	0801 CQSREAD request completed 0.000427
	01 Input Message TranCode=ATMWDRAW 0.002177
Transaction on back-end	31 DLI GU TranCode=ATMWDRAW Region=0002 0.000009
	4E65 DLA30 end Region=0002 SC=' ' 0.000130
	4E42 Transaction Originator TranCode=ATMWDRAW Region=0002 0.000001
	4E11 MPP Scheduling end TranCode=ATMWDRAW Region=0002 0.000006
DLI database call starts	5616 start of protected UOW Region=0002 0.000609
	4E60 DLI Call start Region=0002 0.000007
	4E62 DLA00 start Database=ACCOUNTS Region=0002 Func=GU 0.000021
	4E66 PI/IRLM ENQ IWAIT start Database=ACCOUNTS Region=0002 0.000189
	4E67 PI/IRLM ENQ IWAIT end Region=0002 0.000554
	4E24 VSAM IWAIT start Database=ACCOUNTS Region=0002 0.062948
	4E25 VSAM IWAIT end Region=0002 0.000606
Database open	20 Database Open Database=ACCOUNTS Region=0002 0.000030
	5E SB Handler requests Image Capture Region=0002 0.002982
	5E SB Handler requests Image Capture Region=0002 0.000001
VSAM IWAIT	4E24 VSAM IWAIT start Database=ACCOUNTS Region=0002 0.000993
	4E25 VSAM IWAIT end Region=0002 0.000724
	4E24 VSAM IWAIT start Database=ACCOUNTS Region=0002 0.000265
	4E25 VSAM IWAIT end Region=0002 0.000603
IRLM IWAIT	4E66 PI/IRLM ENQ IWAIT start Database=ACCOUNTS Region=0002 0.000076
	4E67 PI/IRLM ENQ IWAIT end Region=0002 0.001880
	4E63 DLA00 end Region=0002 seg=ACNTINFO SC=' ' 0.000030
	4E61 DLI Call end Region=0002 0.000016
Database updates logged	50 Database Update Database=ACCOUNTS Region=0002 0.000023
	50 Database Update Database=ACCOUNTS Region=0002 0.000059
Output message issued and sent back to front-end	03 Output Message Response LTerm=NEWYORK 0.001673
	35 Output Message Enqueue LTerm=NEWYORK Region=0002 0.000015
	37 Syncpoint Region=0002 0.000019
	37 Syncpoint message transfer Region=0002 0.014575
	0702 CQSPUT COMMIT request completed 0.000080
	0801 CQSREAD request completed 0.006750
	03 Output Message Response LTerm=NEWYORK 0.001744
	35 Output Message Enqueue LTerm=NEWYORK 0.000032
	31 Communications GU LTerm=NEWYORK 0.000035
	36 Output Message Dequeue LTerm=NEWYORK 0.003112
Output message received and transaction completes	5612 End of Phase 2 Syncpoint Program=ATMPROG 0.326434
	4E65 DLA30 end Region=0002 SC='QC' 0.002015
	4E61 DLI Call end Region=0002 0.000003

Long elapsed time

# View the Formatted Record

```

File  Menu  Help
-----
BROWSE      IPIX.IMS610.
Command ==>
***** Top of data *****
+0004 Code... 01      IMS Message
+0A3A STCK... B233C2A4649A3506      LSN... 0000000056CF420
      Date... 1999-05-06 Thursday      Time... 07.54.18.076579

+0000 MSGLRLL... 0A4A      MSGLRZZ... 0000      MSGLCODE... 01
+0005 MSGFLAGS... D1      MSGDFLG2... 81      MSGFPADL... 94
+0008 MSGMDRRN... 080000ED      MSGRDRRN... 080000ED      MSGPRFLL... 0264
+0012 MSGCSW... 00      MSGDFLG3... 00
+0014 MSGUOW... Unit of work (UOW) - Tracking
+0014 MSGORGID... 'IMW1'      MSGGORTK... B233C2A464942D06
+0024 MSGPROID... 'IMW1'      MSGPROTK... B233C2A464942D06
+0034 MSGUFLG1... 00      MSGUFLG2... 00
+0036 MSGRSQTY... 00      MSGDOFS... 0000      MSGDRBN... 00000000

+0040 MSGSSEGM... Message Prefix System Segment; Item ID = 81
+0040 MSGSILL... 0040      MSGSIID... 81      MSGCFLG1... 00
+0044 MSGCFLG2... C8      MSGCFLG3... 00      MSGCQSFL... 00
+0047 MSGCQSFL... 00
+0048 MSGPTERM... Full Physical Input Terminal ID
+0048 MSGILINE... 00000000      MSGITERM... 00000000
+0050 MSGTISEQ... 0000      MSGPREFO... 0      MSGPREFI... 0
+0056 MSGSETS... 00      MSGRES01... 00      MSGRECCT... 0
+0060 MSGIDSTN... FFFFFFFF1D8AF460
+0068 MSGODSTN... 'TASTO75N'      MSGIHSQN... 0000000000000000
+0078 MSGFMTNM...

+0080 MSGEPHDR... Extended Prefix System Segment; Item ID = 86
    
```

Every IMS Log record type (including Traces) is formatted



## Summary

- IMS Connect no longer needs to be a mystery in terms of performance
- High degree of performance information available
  - Batch via IMS Connect Extensions and IMS Performance Analyzer
  - Real-time via OMEGAMON for IMS Connect



## Thank You for Joining Us today!

Go to [www.ibm.com/software/systemz](http://www.ibm.com/software/systemz) to:

- ▶ Replay this teleconference
- ▶ Replay previously broadcast teleconferences
- ▶ Register for upcoming events