



# Smart City Demo

IBM Software

# PCTY2010



Pulse Comes to You

Tivoli Integrated Portal - Mozilla Firefox  
 File Edit View History Bookmarks Tools Help  
 https://pulse-tbsm01.pulsedemo2010.com:16316/ibm/console/login.do?action=secure  
 Most Visited Community Source IBM Austin Resources iGoogle IBM Infocenter - 7.2 Sametime Meetings LEADing@IBM Tivoli Development Yahoo! IBM Pulse Wikis  
 Tivoli Integrated Portal Work Order Tracking Tivoli Integrated Portal  
 Tivoli View: Smarter City/Building View Welcome dkulczar Help Logout IBM  
 Resort Info... City Comm... Telecom Das... -- Select Action --  
 City Command Center Restore  
 Las Vegas City Command Center

### Las Vegas City Health

- Traffic
- Airport
- Water
- Power
- Fire
- Police
- Security
- Sewer

### Transportation

- Road Congestion: 50 %
- Public Transportation (Efficiency): 80 %
- Airport Delays: 10 min

### Power (NV Energy)

- Generation x100 (MW): 55 (range 0-75)
- Renewable Energy: 5 K-MW (range 0-6)
- Usage x100 (MW): 46 (range 0-75)
- Distribution System:

### Water

- Production (x1000 Gal): 200 (range 0-300)
- Storage: 225 K gallons (range 0-400)
- Consumption (x1000 Gal): 114 (range 0-250)
- Distribution System:

### Service Requests

- Water: 4
- Streets: 2
- Buildings: 2
- Parks and Recreation: 4
- Average Resolution Time: 12 min

Status refresh in 1 seconds...

#### Lightweight Event List (LEL)

https://pulse-tbsm01.pulsedemo2010.com:16316/CityAlertsEntity

Serial	Location (Lat/Long)	Event Type	Summary	Time
All[0/0]				

0 Rows Matched

dkulczar pulse-tbsm01.pulsedemo2010.com:16316

#### Local News

##### News

- IBM Pulse Conference**  
IBM Pulse Conference being held at MGM Grand Hotel and Casion from 02/21 to 02/24
- Annual International Awards Market**  
Awards and Recognition 2010 from 02/24 to 02/26
- Digital Signage Expo 2010**  
Digital Signage Expo from 02/24-02/25
- Traffic Alert**  
Traffic Congestion at Las Vegas Blvd

Tivoli Integrated Portal - Mozilla Firefox

File Edit View History Bookmarks Tools Help

https://pulse-tbsm01.pulsedemo2010.com:16316/ibm/console/login.do?action=secure

Most Visited Community Source IBM Austin Resources iGoogle IBM Infocenter - 7.2 Sametime Meetings LEADing@IBM Tivoli Development Yahoo! IBM Pulse Wikis

Tivoli Integrated Portal Work Order Tracking Tivoli Integrated Portal

Tivoli View: Smarter City/Building View Welcome dkulczar Help Logout IBM

Resort Info... City Comm... Telecom Das... -- Select Action --

### City Command Center

#### Las Vegas City Command Center

#### Las Vegas City Health

- Traffic
- Airport
- Water
- Power
- Fire
- Police
- Security
- Sewer

#### Transportation

- Road Congestion: 50%
- Public Transportation (Efficiency): 80%
- Airport Delays: 10 min

#### Power (NV Energy)

- Generation x100 (MW): 55
- Renewable Energy: 5 K-MW
- Usage x100 (MW): 46
- Distribution System:

#### Water

- Production (x1000 Gal): 200
- Storage: 225 K gallons
- Consumption (x1000 Gal): 175
- Distribution System:

#### Service Requests

- Water: 4
- Streets: 2
- Buildings: 2
- Parks and Recreation: 4
- Average Resolution Time: 12 min

Status refresh in 1 seconds...

#### Lightweight Event List (LEL)

https://pulse-tbsm01.pulsedemo2010.com:16316/CityAlertsEntity

Serial	Location (Lat/Long)	Event Type	Summary	Time
174671	35.52, -114.22	Predictive	Power substation may be disrupted due to water overflow	2/21/10 5:52:08 PM
174666	36.12, -115.16	Sensor	Manhole sensor detected water level over threshold	2/21/10 5:51:28 PM

1/1 1/1 All [2/2]

2 Rows Matched

#### Local News

##### News

- IBM Pulse Conference**  
IBM Pulse Conference being held at MGM Grand Hotel and Casion from 02/21 to 02/24
- Annual International Awards Market**  
Awards and Recognition 2010 from 02/24 to 02/26
- Digital Signage Expo 2010**  
Digital Signage Expo from 02/24-02/25
- Traffic Alert**  
Traffic Congestion at Las Vegas Blvd

Done

City Command Center

Las Vegas City Command Center

### Las Vegas City Health

- Traffic
- Airport
- Water
- Power
- Fire
- Police
- Security
- Sewer

### Transportation

- Road Congestion: 50%
- Public Transportation (Efficiency): 80%
- Airport Delays: 10 min

### Power (NV Energy)

- Generation x100 (MW): 55
- Renewable Energy: 5 K-MW
- Usage x100 (MW): 46
- Distribution System:

### Water

- Production (x1000 Gal): 200
- Storage: 225 K gallons
- Consumption (x1000 Gal): 175
- Distribution System:

### Service Requests

- Water: 4
- Streets: 2
- Buildings: 2
- Parks and Recreation: 4
- Average Resolution Time: 12 min

Updating status: done (30 updates)

Lightweight Event List (LEL)  
 https://pulse-tbsm01.pulsedemo2010.com:16316/CityAlertsEntity

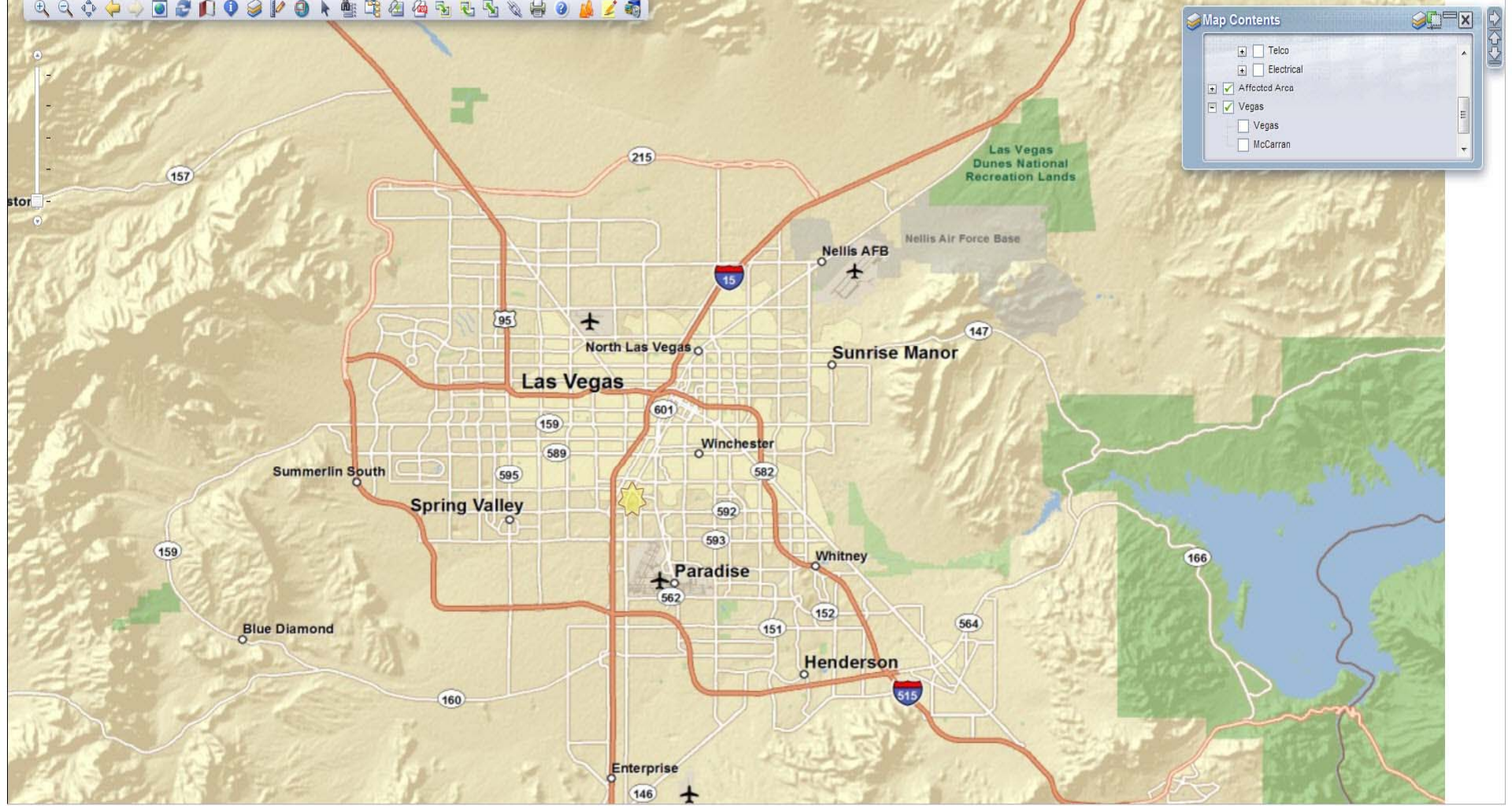
Serial	Location (Lat/Long)	Event Type	Summary	Time
174666	36.12, -115.16	Sensor	Manhole sensor detected water level over threshold	2/21/10 5:51:28 PM

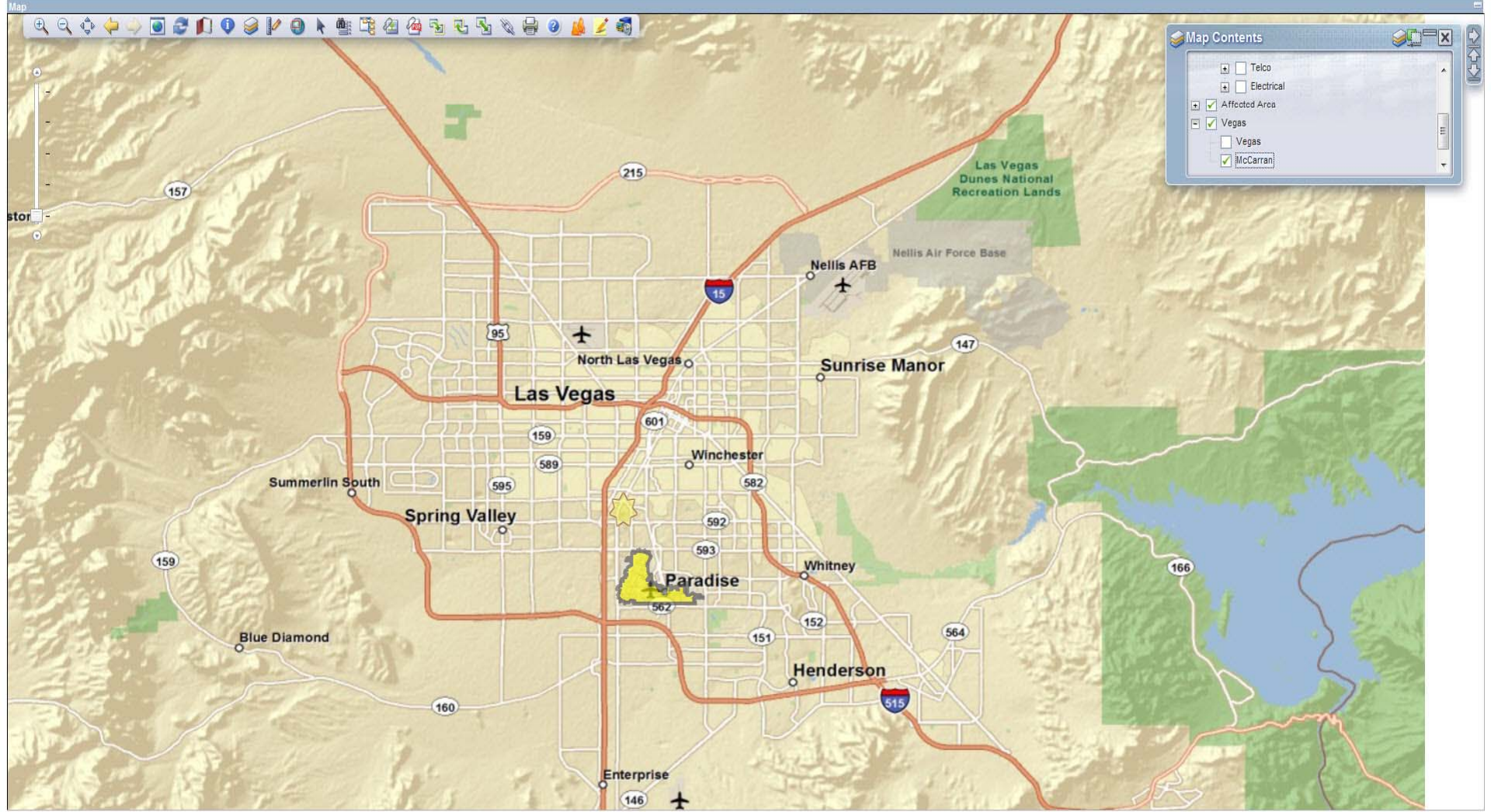
1 Rows Matched

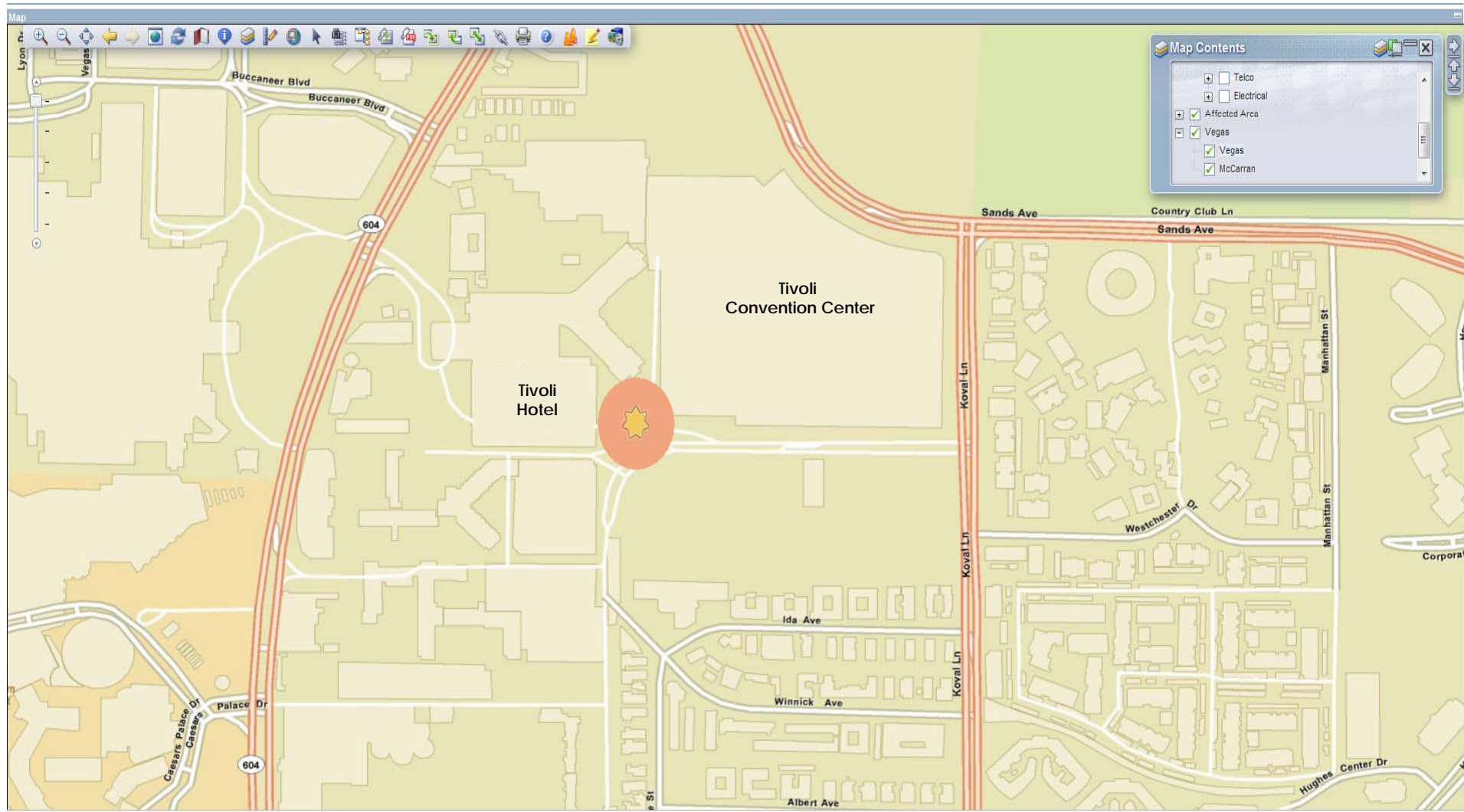
Local News

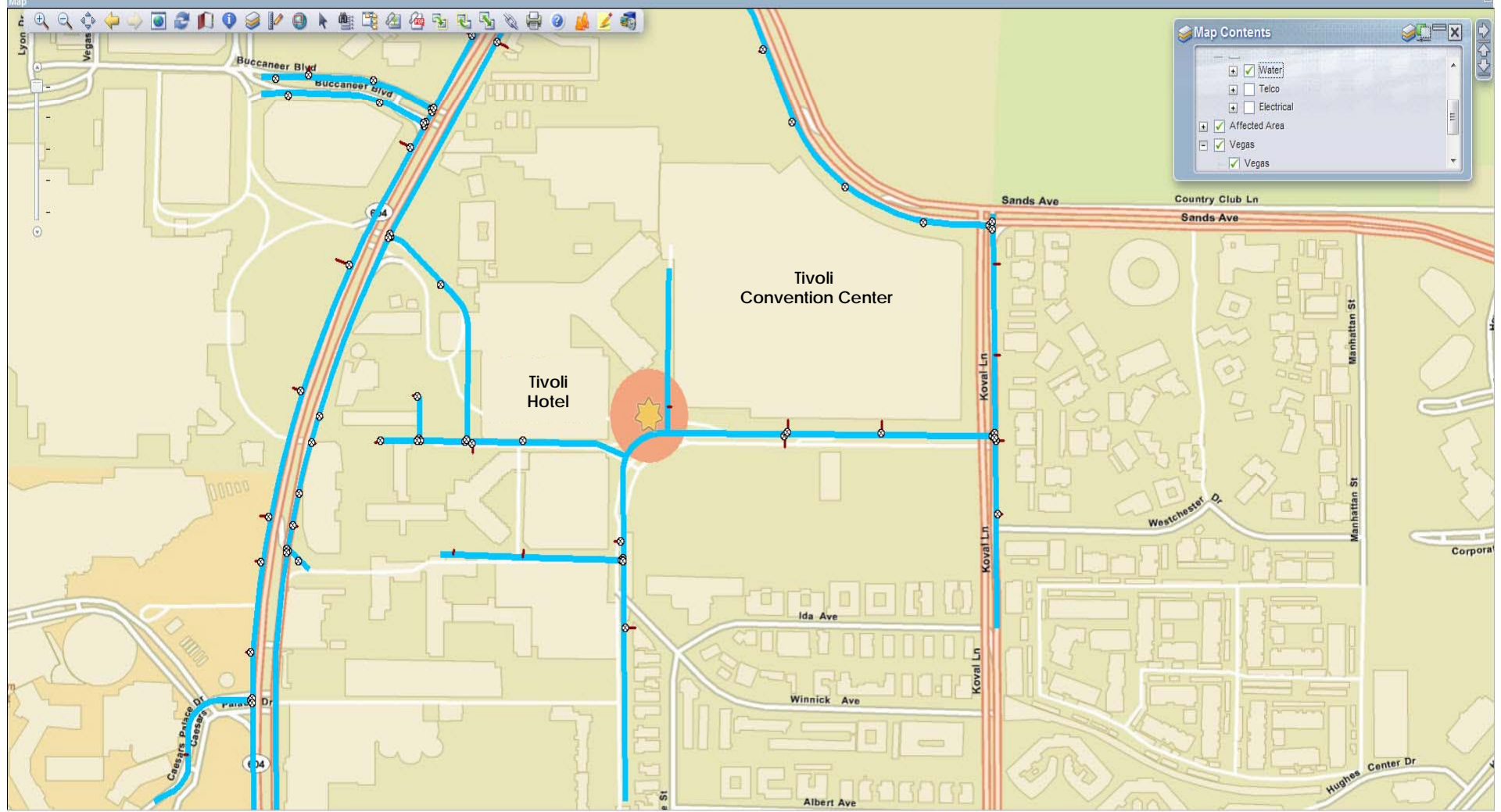
### News

- IBM Pulse Conference**  
IBM Pulse Conference being held at MGM Grand Hotel and Casion from 02/21 to 02/24
- Annual International Awards Market**  
Awards and Recognition 2010 from 02/24 to 02/26
- Digital Signage Expo 2010**  
Digital Signage Expo from 02/24-02/25
- Traffic Alert**  
Traffic Congestion at Las Vegas Blvd

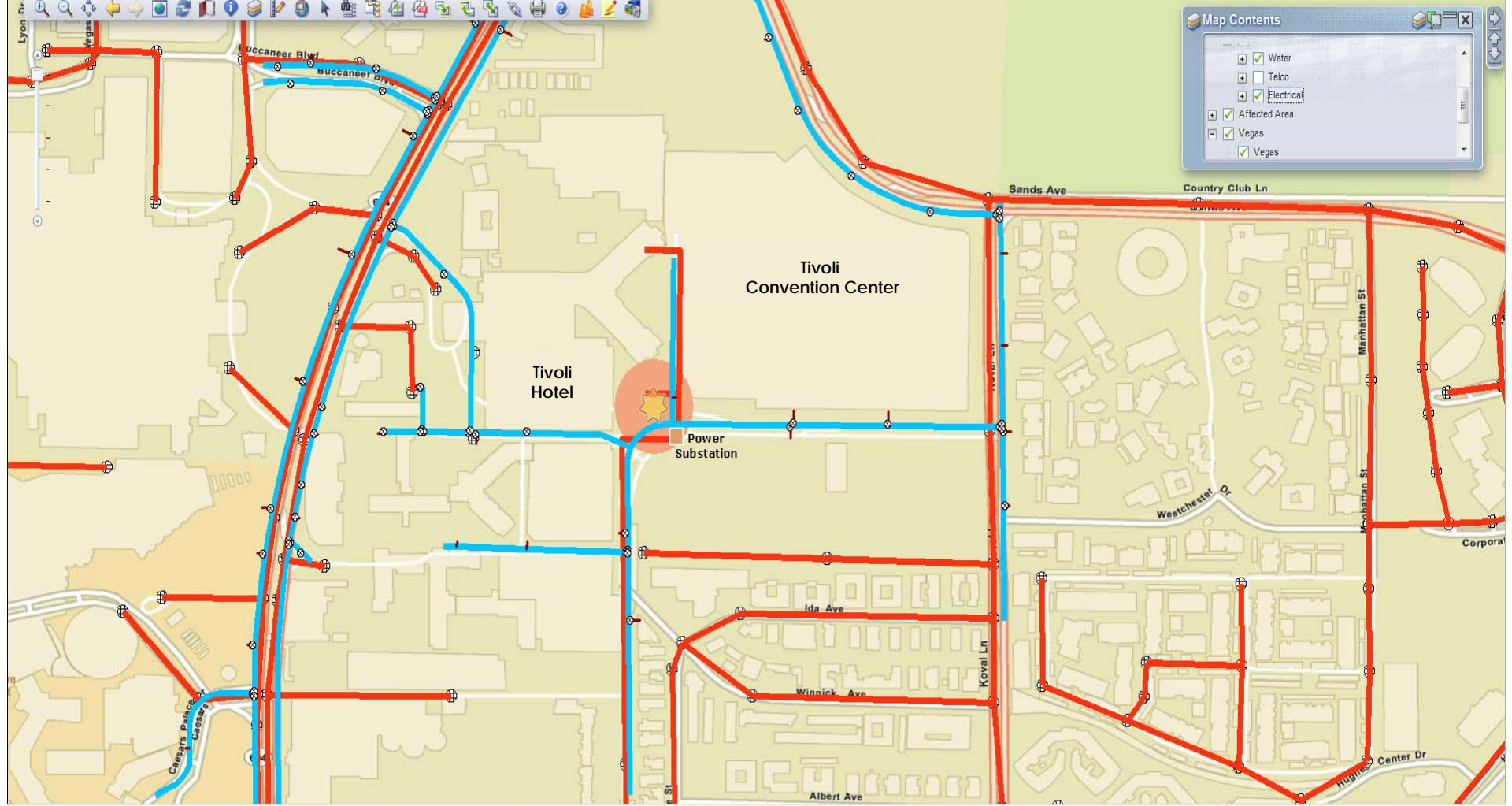


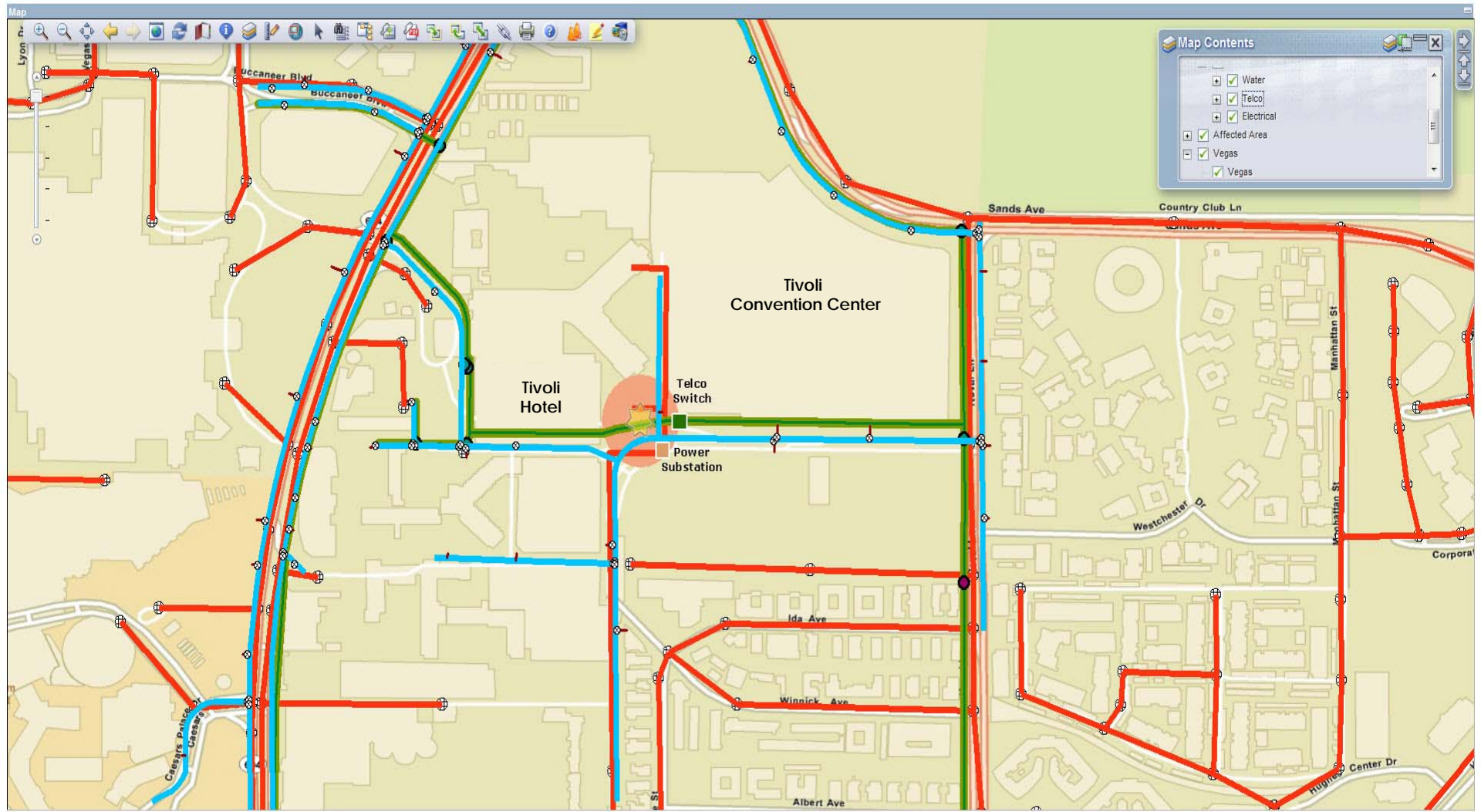








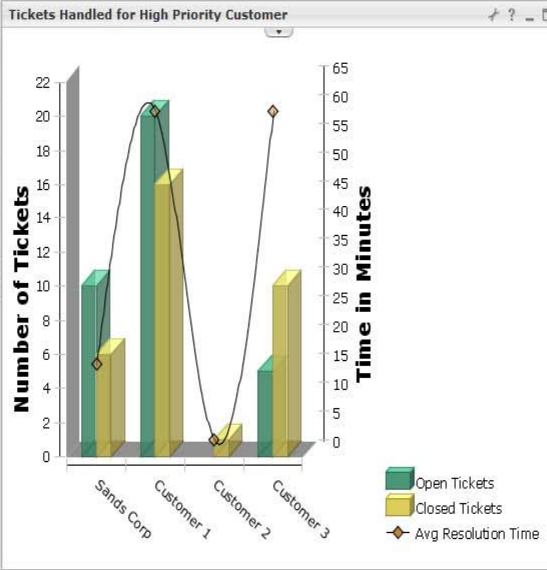




Telecom Dashboard

Las Vegas Telecom Services

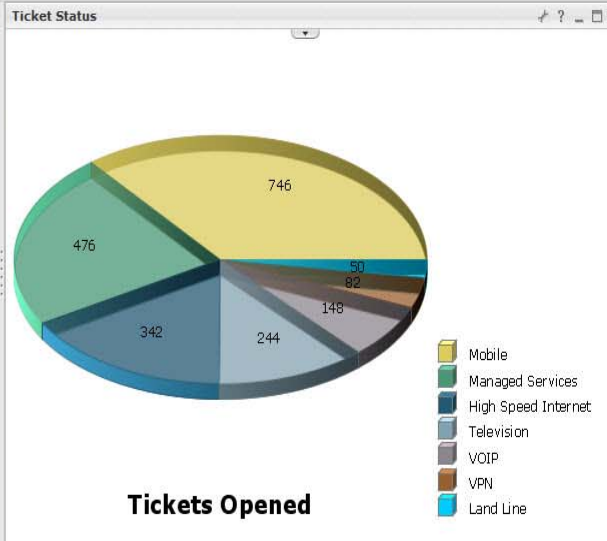
Service	State
LV Telecom	
High Speed Internet	<span style="color: green;">■</span>
Landline	<span style="color: green;">■</span>
Managed Services	<span style="color: green;">■</span>
Mobile	<span style="color: green;">■</span>
Television	<span style="color: green;">■</span>
VOIP	<span style="color: green;">■</span>



Lightweight Event List (LEL)  
 https://pulse-tbsm01.pulsedemo2010.com:16316/Telecom/View

Serial	Location (Lat/Long)	Event Type	Summary	Circuit ID	Ti
174679	38.43, -114.09	SLA	High error rate on circuit A0901 - SLA will be violated in 55 minutes.	A0901	2/21/1
174678	38.43, -114.09	SLA	High error rate on circuit A0991 - SLA will be violated in 57 minutes.	A0991	2/21/1
174677	38.43, -114.09	SLA	High error rate on circuit A0109 - SLA will be violated in 56 minutes.	A0109	2/21/1
174676	38.43, -114.09	SLA	High error rate on circuit A0011 - SLA will be violated in 44 minutes.	A0011	2/21/1
174675	38.43, -114.09	SLA	High error rate on circuit A0341 - SLA will be violated in 52 minutes.	A0341	2/21/1
174674	38.43, -114.09	SLA	High error rate on circuit A0921 - SLA will be violated in 58 minutes.	A0921	2/21/1
174673	38.43, -114.09	SLA	High error rate on circuit A0818 - SLA will be violated in 57 minutes.	A0818	2/21/1

7 Rows Matched | All [7/7] | dkulczar | pulse-tbsm01.pulsedemo2010.com:16316



Tivoli Integrated Portal - Mozilla Firefox

File Edit View History Bookmarks Tools Help

https://pulse-tbsm01.pulsedemo2010.com:16316/ibm/console/login.do?action=secure

Most Visited Community Source IBM Austin Resources iGoogle IBM Infocenter - 7.2 Sametime Meetings LEADING@IBM Tivoli Development Yahoo! IBM Pulse Wikis

Tivoli Integrated Portal Work Order Tracking Tivoli Integrated Portal

Tivoli View: Smarter City/Building View Welcome dkulczar Help Logout IBM

Resort Info... City Comman... Telecom Das... -- Select Action --

### Telecom Dashboard

#### Las Vegas Telecom Services

Service	State
LV Telecom	
High Speed Internet	Green
Landline	Green
Managed Services	Green
Mobile	Green
Television	Green
VOIP	Green

#### Tickets Handled for High Priority Customer

Customer	Open Tickets	Closed Tickets	Avg Resolution Time (Minutes)
Sands Corp	10	7	15
Customer 1	20	17	60
Customer 2	5	2	10
Customer 3	10	10	55

#### Las Vegas Map

#### Lightweight Event List (LEL)

https://pulse-tbsm01.pulsedemo2010.com:16316/TelecomView

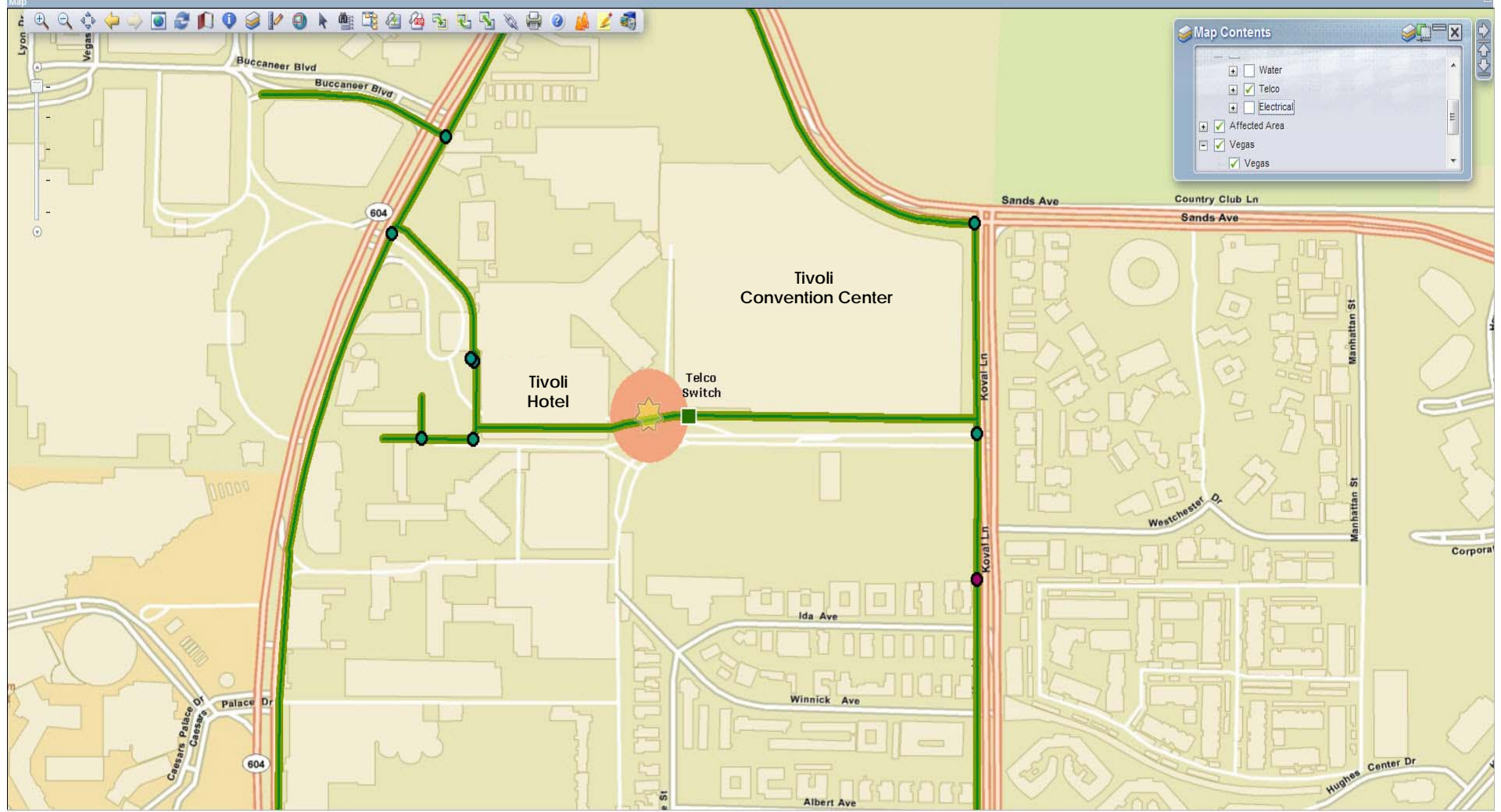
Serial	Location (Lat/Long)	Event Type	Summary	Circuit ID	Tit
174681	38.43, -114.09	City Alert	High water level detected will likely affect circuits. Estimated fix time: 12 hours.		2/21/1
174679	38.43, -114.09	SLA	High error rate on circuit A0901 - SLA will be violated in 55 minutes.	A0901	2/21/1
174678	38.43, -114.09	SLA	High error rate on circuit A0991 - SLA will be violated in 57 minutes.	A0991	2/21/1
174677	38.43, -114.09	SLA	High error rate on circuit A0109 - SLA will be violated in 56 minutes.	A0109	2/21/1
174676	38.43, -114.09	SLA	High error rate on circuit A0011 - SLA will be violated in 44 minutes.	A0011	2/21/1
174675	38.43, -114.09	SLA	High error rate on circuit A0341 - SLA will be violated in 52 minutes.	A0341	2/21/1
174674	38.43, -114.09	SLA	High error rate on circuit A0921 - SLA will be violated in 58 minutes.	A0921	2/21/1
174673	38.43, -114.09	SLA	High error rate on circuit A0818 - SLA will be violated in 57 minutes.	A0818	2/21/1

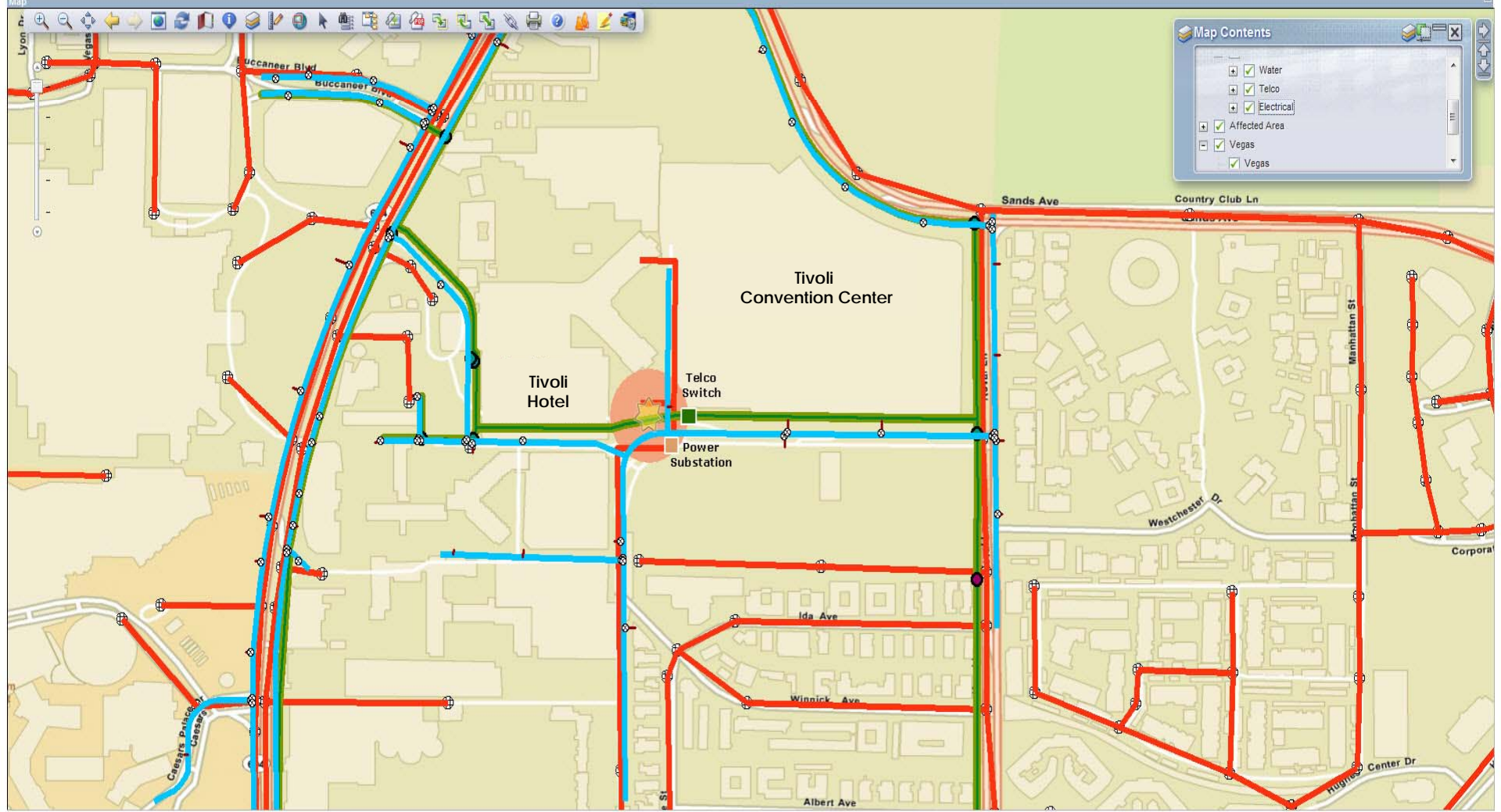
1/1 7/7 All[8/8] 8 Rows Matched dkulczar pulse-tbsm01.pulsedemo2010.com:16316

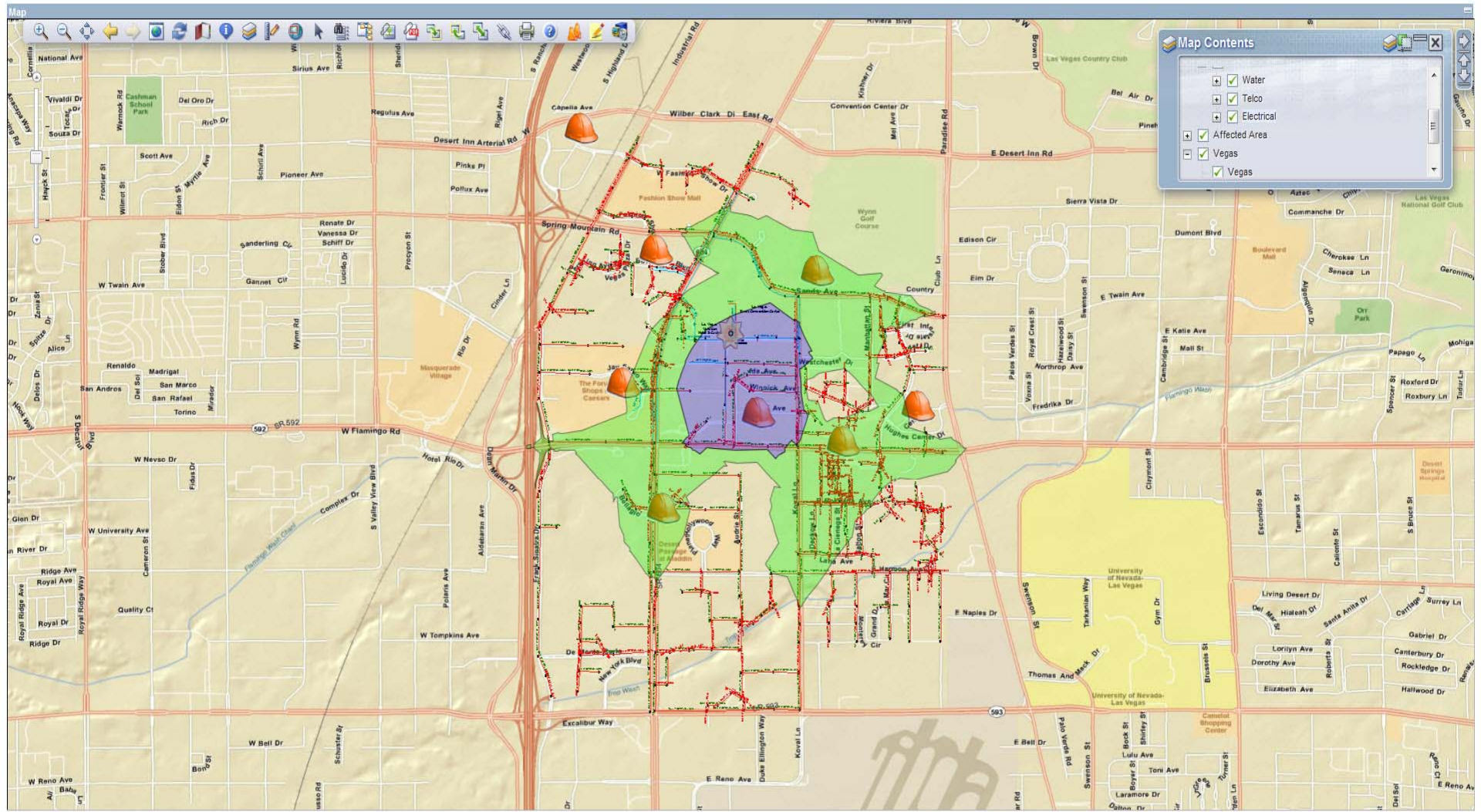
#### Ticket Status

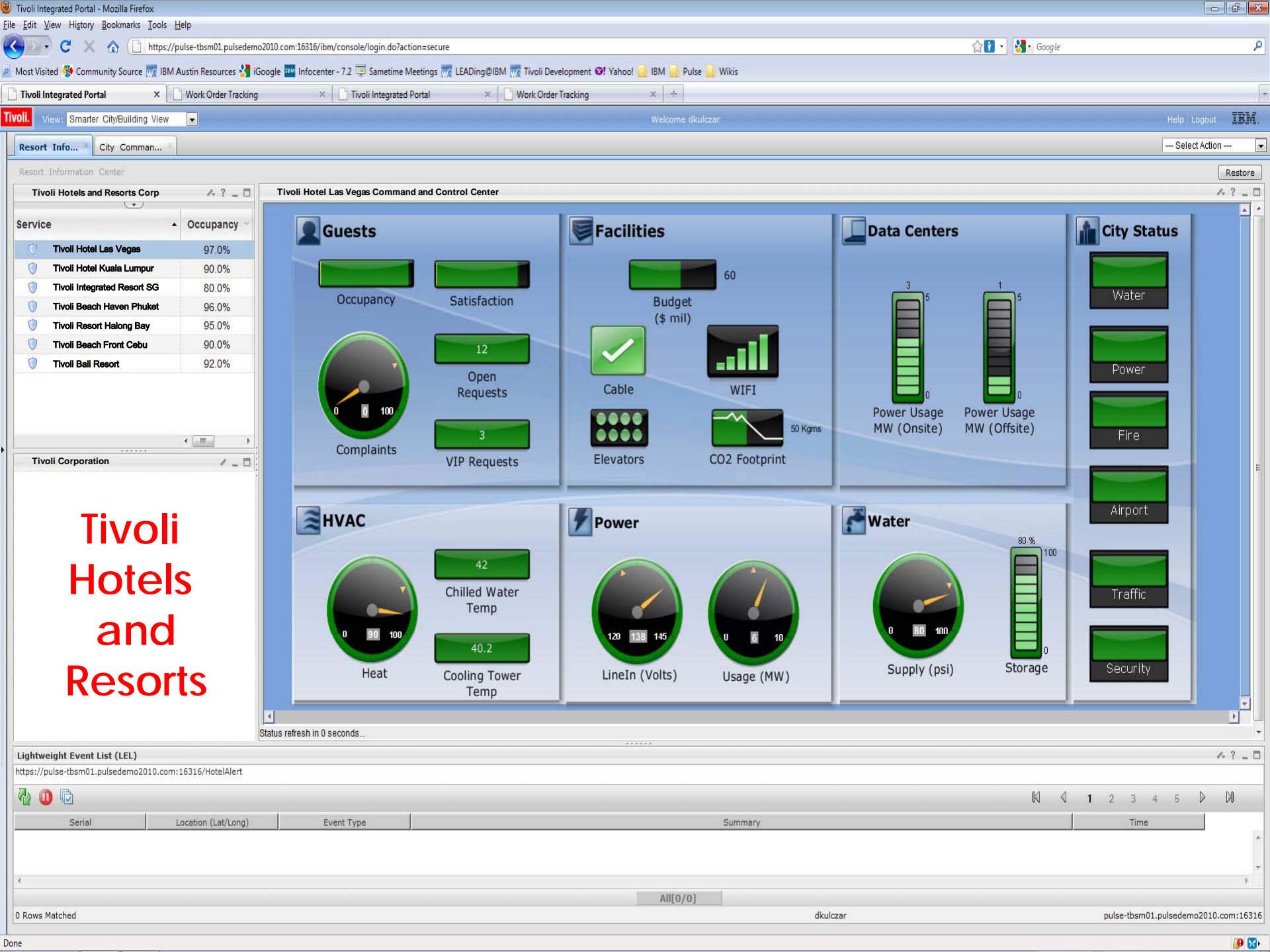
Service	Tickets Opened
Mobile	746
Managed Services	476
High Speed Internet	342
Television	244
VOIP	148
VPN	82
Land Line	50

**Tickets Opened**









Resort Info... City Comman...

Resort Information Center

Service	Occupancy
Tivoli Hotel Las Vegas	97.0%
Tivoli Hotel Kuala Lumpur	90.0%
Tivoli Integrated Resort SG	80.0%
Tivoli Beach Haven Phuket	96.0%
Tivoli Resort Halong Bay	95.0%
Tivoli Beach Front Cebu	90.0%
Tivoli Ball Resort	92.0%

Tivoli Hotel Las Vegas Command and Control Center

### Guests

Occupancy:

Satisfaction:

Complaints:

Open Requests: 12

VIP Requests: 3

### Facilities

Budget (\$ mil): 60

Cable:

WIFI:

Elevators:

CO2 Footprint: 50 Kgms

### Data Centers

Power Usage MW (Onsite):

Power Usage MW (Offsite):

### City Status

Water:

Power:

Fire:

Airport:

Traffic:

Security:

### HVAC

Heat:

Chilled Water Temp: 42

Cooling Tower Temp: 40.2

### Power

LineIn (Volts):

Usage (MW):

### Water

Supply (psi):

Storage:

Status refresh in 0 seconds...

Tivoli  
Hotels  
and  
Resorts

Lightweight Event List (LEL)

https://pulse-tbsm01.pulsedemo2010.com:16316/HotelAlert

Serial	Location (Lat/Long)	Event Type	Summary	Time
All [0/0]				
0 Rows Matched				

dkulczar pulse-tbsm01.pulsedemo2010.com:16316



Resort Info... City Comman... -- Select Action --

Resort Information Center

Tivoli Hotels and Resorts Corp

Service	Occupancy
Tivoli Hotel Las Vegas	97.0%
Tivoli Hotel Kuala Lumpur	90.0%
Tivoli Integrated Resort SG	80.0%
Tivoli Beach Haven Phuket	96.0%
Tivoli Resort Halong Bay	95.0%
Tivoli Beach Front Cebu	90.0%
Tivoli Ball Resort	92.0%

Tivoli Hotel Las Vegas Command and Control Center

**Guests**

Occupancy:

Satisfaction:

Budget (\$ mil): 60

Complaints: 0 to 100

Open Requests: 12

VIP Requests: 3

**Facilities**

Cable:

WIFI:

Elevators:

CO2 Footprint: 50 Kgms

**Data Centers**

Power Usage MW (Onsite): 3 to 5

Power Usage MW (Offsite): 1 to 5

**City Status**

Water:

Power:

Fire:

Airport:

Traffic:

Security:

**HVAC**

Heat: 0 to 100

Chilled Water Temp: 42

Cooling Tower Temp: 40.2

**Power**

LineIn (Volts): 120 to 145

Usage (MW): 0 to 10

**Water**

Supply (psi): 0 to 100

Storage: 80% to 100

Updating status: displaying...

**Tivoli  
Hotels  
and  
Resorts**

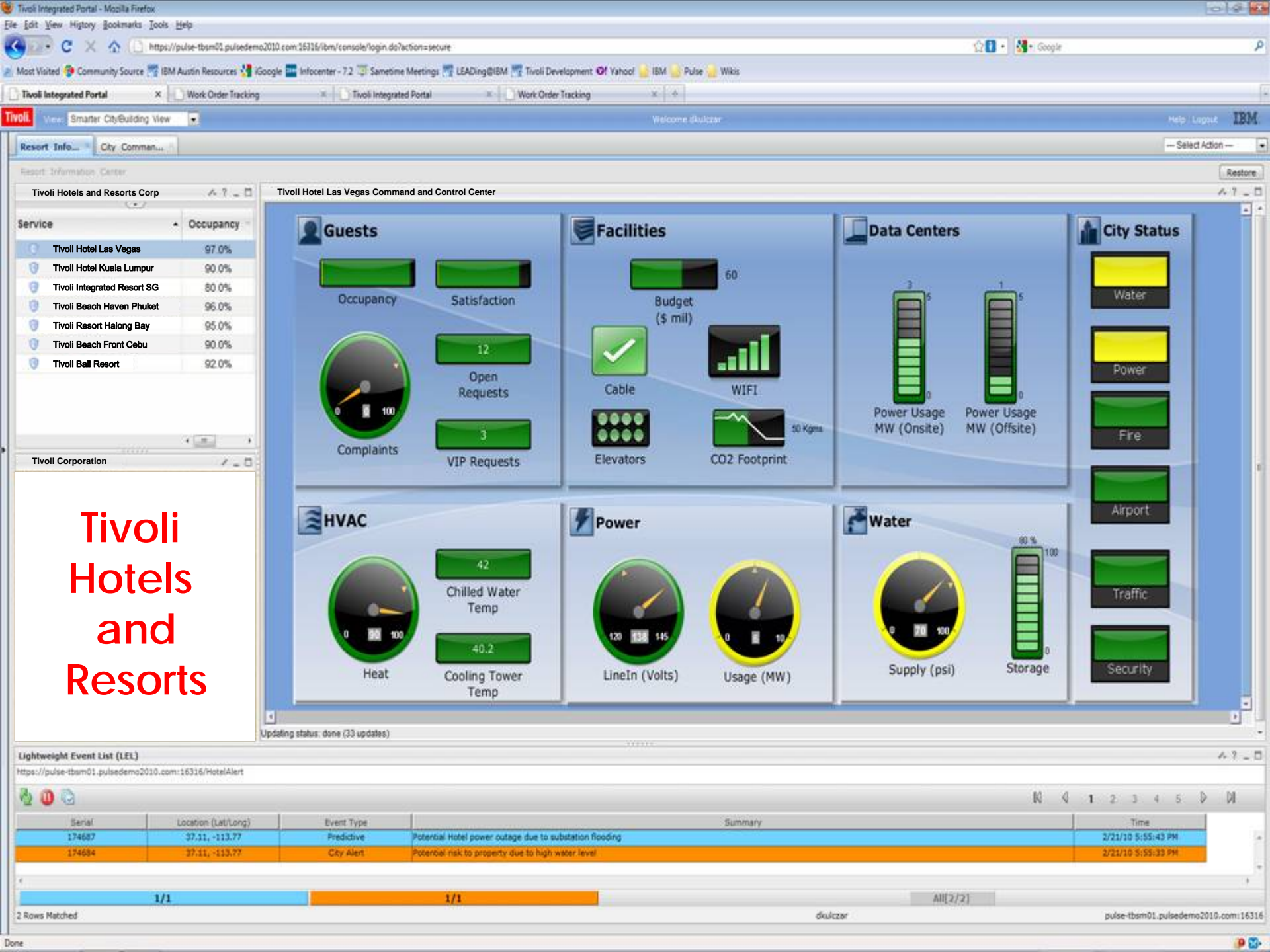
Lightweight Event List (LEL)  
 https://pulse-tbsm01.pulsedemo2010.com:16316/HotelAlert

Serial	Location (Lat/Long)	Event Type	Summary	Time
174684	37.11, -113.77	City Alert	Potential risk to property due to high water level	2/21/10 5:55:33 PM

1 Rows Matched

All [1/1]

dkulczar pulse-tbsm01.pulsedemo2010.com:16316



# Tivoli Hotels and Resorts

Resort Information Center

Tivoli Hotels and Resorts Corp

Service	Occupancy
Tivoli Hotel Las Vegas	97.0%
Tivoli Hotel Kuala Lumpur	90.0%
Tivoli Integrated Resort SG	80.0%
Tivoli Beach Haven Phuket	96.0%
Tivoli Resort Halong Bay	95.0%
Tivoli Beach Front Cebu	90.0%
Tivoli Ball Resort	92.0%

Tivoli Corporation

Tivoli Hotel Las Vegas Command and Control Center

### Guests

Occupancy:

Satisfaction:

Complaints:

Open Requests: 12

VIP Requests: 3

### Facilities

Budget (\$ mil): 60

Cable:

WIFI:

Elevators:

CO2 Footprint: 90 Kgms

### Data Centers

Power Usage MW (Onsite):

Power Usage MW (Offsite):

### City Status

Water:

Power:

Fire:

Airport:

Traffic:

Security:

### HVAC

Heat:

Chilled Water Temp: 42

Cooling Tower Temp: 40.2

### Power

LineIn (Volts):

Usage (MW):

### Water

Supply (psi):

Storage:

Updating status: done (33 updates)

Lightweight Event List (LEL)

https://pulse-tb1m01.pulsedemo2010.com:16316/HotelAlert

Serial	Location (Lat/Long)	Event Type	Summary	Time
174687	37.11, -113.77	Predictive	Potential Hotel power outage due to substation flooding	2/21/10 5:55:43 PM
174684	37.11, -113.77	City Alert	Potential risk to property due to high water level	2/21/10 5:55:33 PM

1/1 1/1 All [2/2]

2 Rows Matched

Done

Work Order	VEN 41818	<a href="#">Reduce Power due to nearby flood risk</a>	Site	BEDFORD	Attachments	
Location	LV06	<a href="#">Las Vegas Blvd - 3300 Block</a>	Street Address	3355 Las Vegas Blvd South	Priority	1
Parent WO			City	LAS VEGAS	Priority Justification	Outage risk due to nearby flooding
Classification	DC PRIMARY		State/Province	NV	Latitude	
Class Description	Primary Datacenter Action		Zip/Postal Code	89109	Longitude	
Feature Class						

Scheduling Information Responsibility

Target Start	2/22/10 9:34 AM	Actual Start		Reported By	DKULCZAR
Target Finish	2/22/10 10:00 AM	Actual Finish		Reported Date	1/21/10 6:32 AM
				Owner	

Tasks for Work Order VEN 41818

Sequence	Task	Summary	Status	Owner Group
10	10	Move financial workload to offsite datacenter	WAPPR	NETWORK
20	20	Power down cooling units in datacenter	WAPPR	MAINT

New Row

Tivoli Integrated Portal - Mozilla Firefox

File Edit View History Bookmarks Tools Help

https://pulse-tbsm01.pulsedemo2010.com:16316/ibm/console/login.do?action=secure

Most Visited Community Source IBM Austin Resources iGoogle IBM Infocenter - 7.2 Sametime Meetings LEADing@IBM Tivoli Development Yahoo! IBM Pulse Wikis

Tivoli Integrated Portal Work Order Tracking Tivoli Integrated Portal Work Order Tracking

Tivoli. View: Smarter City/Building View Welcome dkulczar Help Logout IBM

Resort Info... City Comman... -- Select Action --

Resort Information Center

Tivoli Hotels and Resorts Corp

Service	Occupancy
Tivoli Hotel Las Vegas	97.0%
Tivoli Hotel Kuala Lumpur	90.0%
Tivoli Integrated Resort SG	80.0%
Tivoli Beach Haven Phuket	96.0%
Tivoli Resort Halong Bay	95.0%
Tivoli Beach Front Cebu	90.0%
Tivoli Ball Resort	92.0%

Tivoli Corporation

# Tivoli Hotels and Resorts

Tivoli Hotel Las Vegas Command and Control Center

**Guests**

- Occupancy:
- Satisfaction:
- Budget (\$ mil):
- Complaints:
- Open Requests:
- VIP Requests:

**Facilities**

- Cable:
- WIFI:
- Elevators:
- CO2 Footprint:

**Data Centers**

- Power Usage MW (Onsite):
- Power Usage MW (Offsite):

**City Status**

- Water:
- Power:
- Fire:
- Airport:
- Traffic:
- Security:

**HVAC**

- Heat:
- Chilled Water Temp:
- Cooling Tower Temp:

**Power**

- LineIn (Volts):
- Usage (MW):

**Water**

- Supply (psi):
- Storage:

Updating status: requesting...

Lightweight Event List (LEL)

https://pulse-tbsm01.pulsedemo2010.com:16316/HotelAlert

Serial	Location (Lat/Long)	Event Type	Summary	Time
174687	37.11, -113.77	Predictive	Potential Hotel power outage due to substation flooding	2/21/10 5:55:43 PM
174684	37.11, -113.77	City Alert	Potential risk to property due to high water level	2/21/10 5:55:33 PM

1/1 1/1 All[2/2]

2 Rows Matched dkulczar pulse-tbsm01.pulsedemo2010.com:16316

Tivoli Integrated Portal - Mozilla Firefox

File Edit View History Bookmarks Tools Help

https://pulse-tbsm01.pulsedemo2010.com:16316/ibm/console/login.do?action=secure

Most Visited Community Source IBM Austin Resources iGoogle IBM Infocenter - 7.2 Sametime Meetings LEADing@IBM Tivoli Development Yahoo! IBM Pulse Wikis

Tivoli Integrated Portal Work Order Tracking Tivoli Integrated Portal Work Order Tracking

Tivoli View: Smarter City/Building View Welcome dkulczar Help Logout IBM

Resort Info... City Comm... -- Select Action --

### City Command Center

#### Las Vegas City Command Center

#### Las Vegas City Health

- Traffic
- Airport
- Water
- Power
- Fire
- Police
- Security
- Sewer

#### Transportation

- Road Congestion: 50%
- Public Transportation (Efficiency): 80%
- Airport Delays: 10 min

#### Power (NV Energy)

- Generation x100 (MW): 55 (0-75)
- Renewable Energy: 5 K-MW (0-6)
- Usage x100 (MW): 46 (0-75)
- Distribution System:

#### Water

- Production (x1000 Gal): 200 (0-300)
- Storage: 225 K gallons (0-400)
- Consumption (x1000 Gal): 114 (0-250)
- Distribution System:

#### Service Requests

- Water: 4
- Streets: 2
- Buildings: 2
- Parks and Recreation: 4
- Average Resolution Time: 12 min

Updating status: done (30 updates)

#### Lightweight Event List (LEL)

https://pulse-tbsm01.pulsedemo2010.com:16316/CityAlertsEntity

Serial	Location (Lat/Long)	Event Type	Summary	Time
All [0/0]				

0 Rows Matched

dkulczar pulse-tbsm01.pulsedemo2010.com:16316

#### Local News

##### News

- IBM Pulse Conference**  
IBM Pulse Conference being held at MGM Grand Hotel and Casion from 02/21 to 02/24
- Annual International Awards Market**  
Awards and Recognition 2010 from 02/24 to 02/26
- Digital Signage Expo 2010**  
Digital Signage Expo from 02/24-02/25
- Traffic Alert**  
Traffic Congestion at Las Vegas Blvd

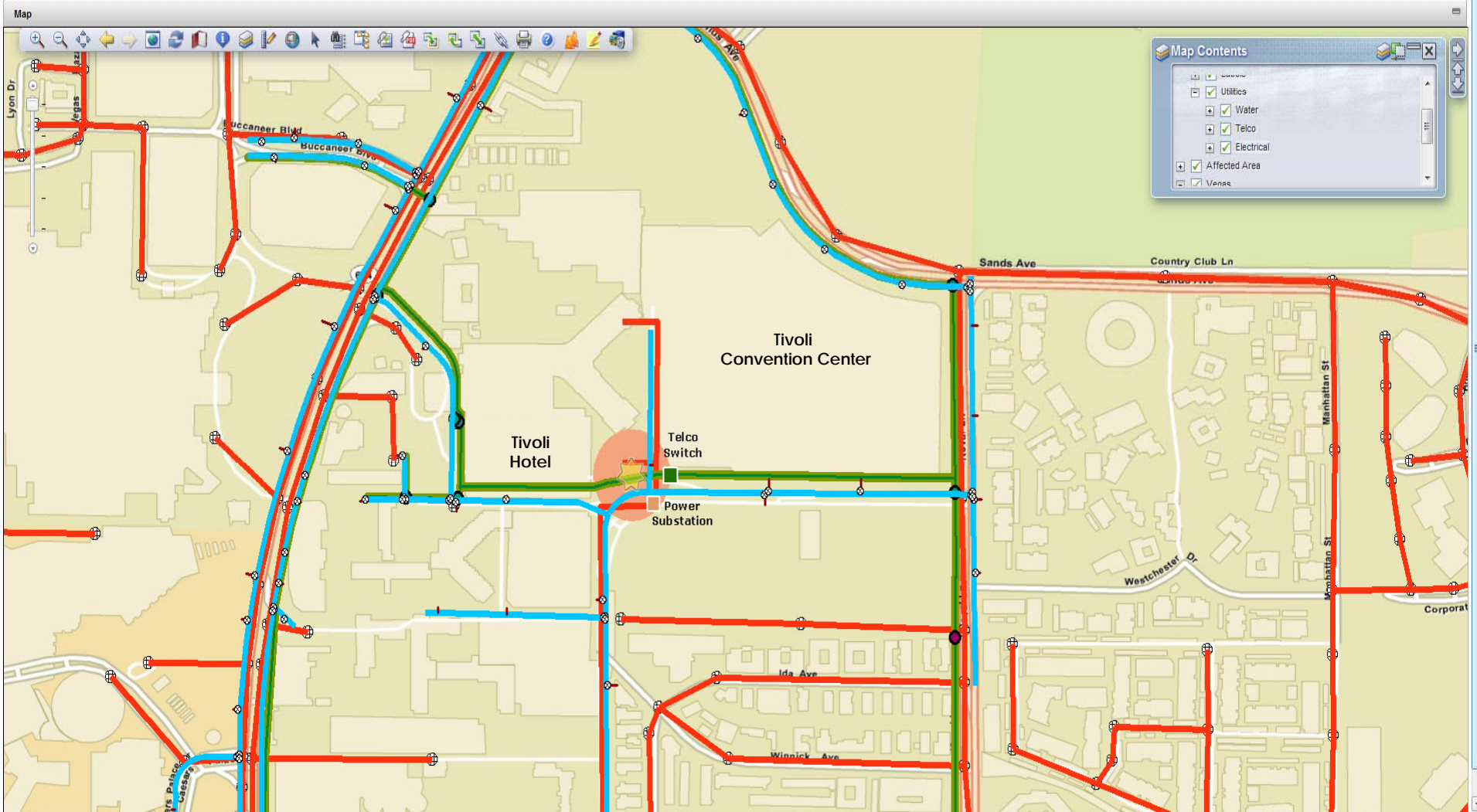
Work Order: CCC-PARENT

Parent Work Order for Feb 22nd Flood Incident

Status: WAPPR

Feature Class: WORKORDERPOINT

Attachments



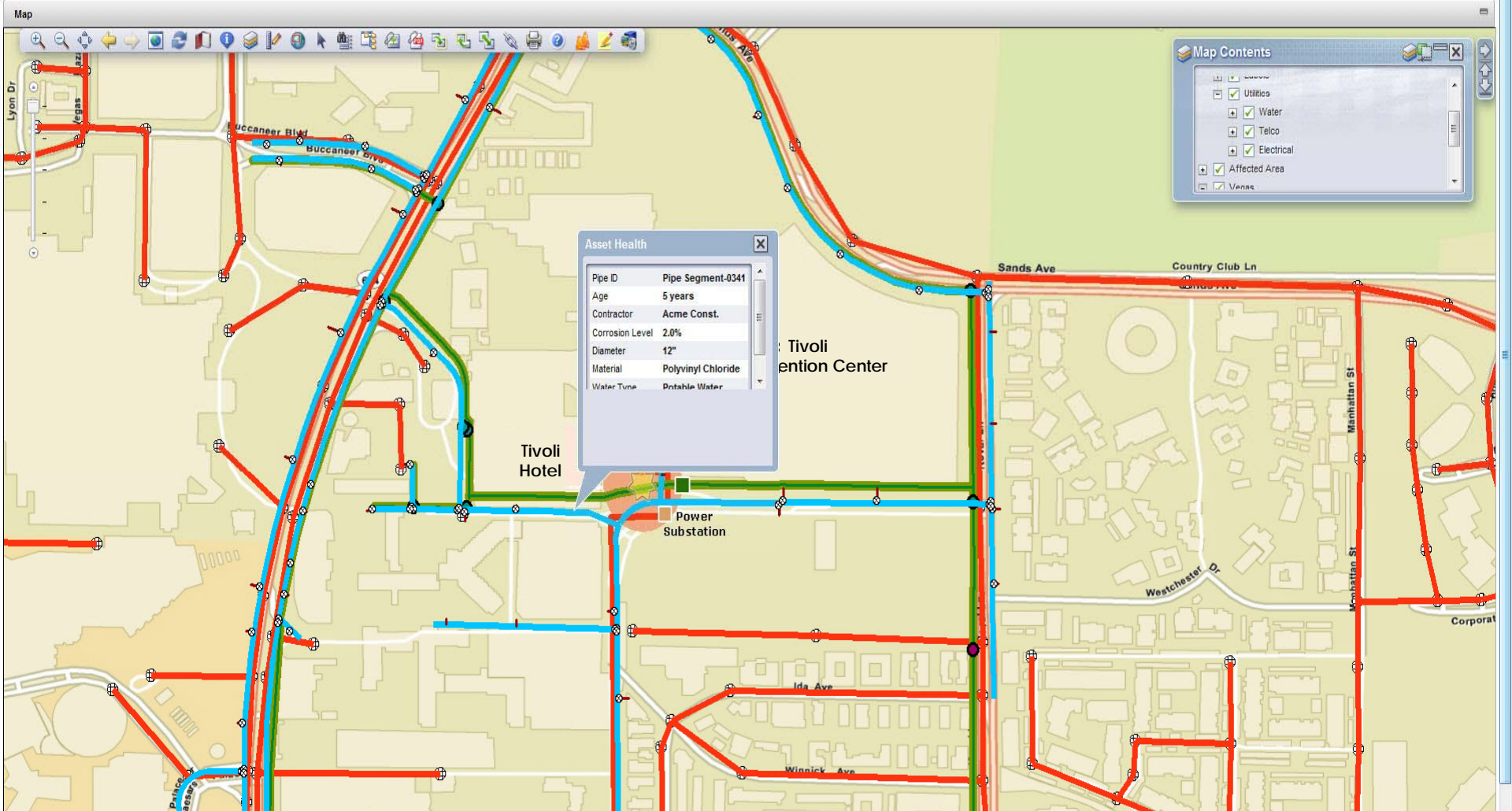
Work Order: CCC-PARENT

Parent Work Order for Feb 22nd Flood Incident

Status: WAPPR

Feature Class: WORKORDERPOINT

Attachments



Tivoli Integrated Portal - Mozilla Firefox

File Edit View History Bookmarks Tools Help

https://pulse-tsiem01.pulsedemo2010.com/lbm/console/secure/securelogin.do

Most Visited Community Source IBM Austin Resources iGoogle IBM Infocenter - 7.2 Sametime Meetings LEADing@IBM Tivoli Development Yahoo! IBM Pulse Wikis

Tivoli Integrated Portal Work Order Tracking Tivoli Integrated Portal Work Order Tracking

Tivoli View: All tasks Welcome cfowner Help Logout IBM

Compliance ... -- Select Action --

Security Information Management

Compliance Dashboard ? - □

Dashboard Trends Reports Regulations Policy Groups Distribution Settings

CFDB > Pulse\_SecDB

### Summary

Database Pulse\_SecDB on Server CIFDB

Event Information Settings

Events by top event count by "Where" and "What".

**Where**


Las Vegas 03  
Las Vegas 05  
Las Vegas 06  
Las Vegas 08  
Las Vegas 10

What

1 2 3 4 5 6 7

1 Airport 6 Transport  
2 Buildings 7 Water  
3 Power  
4 Sewer  
5 Telco

**Status of the database**

 **Status of Database:** Database loaded successfully  
**Loading date:** 2/20/10 6:23:18 PM (-0800)  
**Number of Days:** 0.01  
**Automatic policy:** 2/21/10 2:19:47 AM (-0800)  
**User policy:** ..\config\grouping\work\Pulse\_571

**Data in this database** Timezone

Where (Platform)	Start time	End time	#Chunks	#Events
LV03 (Frabis Manager)	1/11/10 9:00:00 AM (-0500)	1/11/10 9:15:00 AM (-0500)	1	14
LV05 (Frabis Manager)	1/11/10 9:00:00 AM (-0500)	1/11/10 9:15:00 AM (-0500)	1	14
LV08 (Frabis Manager)	1/11/10 9:00:00 AM (-0500)	1/11/10 9:15:00 AM (-0500)	1	14
LV10 (Frabis Manager)	1/11/10 9:00:00 AM (-0500)	1/11/10 9:15:00 AM (-0500)	1	14
LV06 (Frabis Manager)	1/11/10 9:00:00 AM (-0500)	1/11/10 9:15:00 AM (-0500)	1	16

Total Events 72  
Policy Exceptions 72 100%  
Special Attention Events 2 2%  
Failures 0 0%

Done



Tivoli Integrated Portal - Mozilla Firefox

File Edit View History Bookmarks Tools Help

https://pulse-tsiem01.pulsedemo2010.com/ibm/console/secure/securelogin.do

Most Visited Community Source IBM Austin Resources iGoogle IBM Infocenter - 7.2 Sametime Meetings LEADing@IBM Tivoli Development Yahoo! IBM Pulse Wikis

Tivoli Integrated Portal Work Order Tracking Tivoli Integrated Portal Work Order Tracking

**Tivoli.** View: All tasks Welcome cifowner Help Logout IBM

Compliance ... -- Select Action --

Security Information Management

**Compliance Dashboard** ? - □

Dashboard Trends Reports Regulations Policy Groups Distribution Settings

CFDB > Pulse\_SecDB > Event List

**Event list** Database Pulse\_SecDB on Server CIFDB, groups: "Las Vegas 06" and "Sewer"

Time zone: Event time zone

Severity	When	#	What	Where	Who	Where From	On What	Where To
10	1/11/10 9:00:00 AM (-0500)	1	Heartbeat / Sewer : Alive	LV06	System ( servo\$ {2} )	SENSOR06	Pressure Control Monitor : Location06 / {3}	-
10	1/11/10 9:15:00 AM (-0500)	1	Heartbeat / Sewer : Alive	LV06	System ( servo\$ {2} )	SENSOR06	Pressure Control Monitor : Location06 / {3}	-
80	1/11/10 9:01:00 AM (-0500)	1	Alert / Sewer : Offline	LV06	System ( servo\$ {2} )	SENSOR06	Manhole Cover : Location06 / {3}	-
80	1/11/10 9:02:00 AM (-0500)	1	Alert / Sewer : Online	LV06	System ( servo\$ {2} )	SENSOR06	Manhole Cover : Location06 / {3}	-

Done

HOME

ALERTS

EVENTS

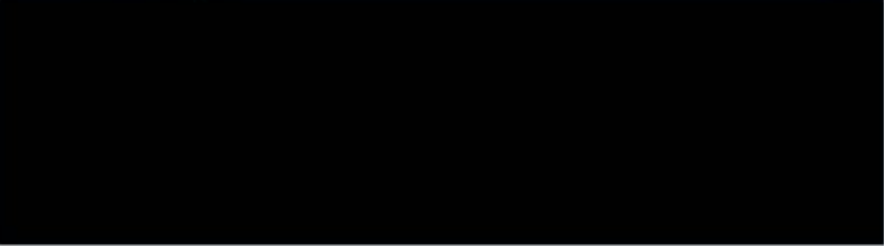
Quick Search

LOGOUT

MAPS



INSTANT ALERTS



VIEWS MAPS

All Cameras



LIVE Alley

2010-02-21 15:58:30



HOME

ALERTS

EVENTS

Quick Search **Manhole Activity**

LOGOUT

### MAPS



SEARCH

THUMBNAILS

TRACK SUMMARY

STATS

HEATMAP

### INSTANT ALERTS

### EVENT SEARCH RESULTS

ARCHIVE

Alley

NEXT

LIVE

Alley

2010-02-21 18:58:47



<p>2010-02-21 10:18:15 [125.92s]</p>	<p>2010-02-21 10:18:05 [97.8s]</p>	<p>2010-02-21 10:06:32 [84.61s]</p>	<p>2010-02-21 10:06:21 [152.09s]</p>
<p>2010-02-21 09:54:47 [4.19s]</p>	<p>2010-02-21 09:54:34 [93.25s]</p>	<p>2010-02-21 09:43:02 [5.66s]</p>	<p>2010-02-21 09:42:52 [168.89s]</p>





**Thank You.**