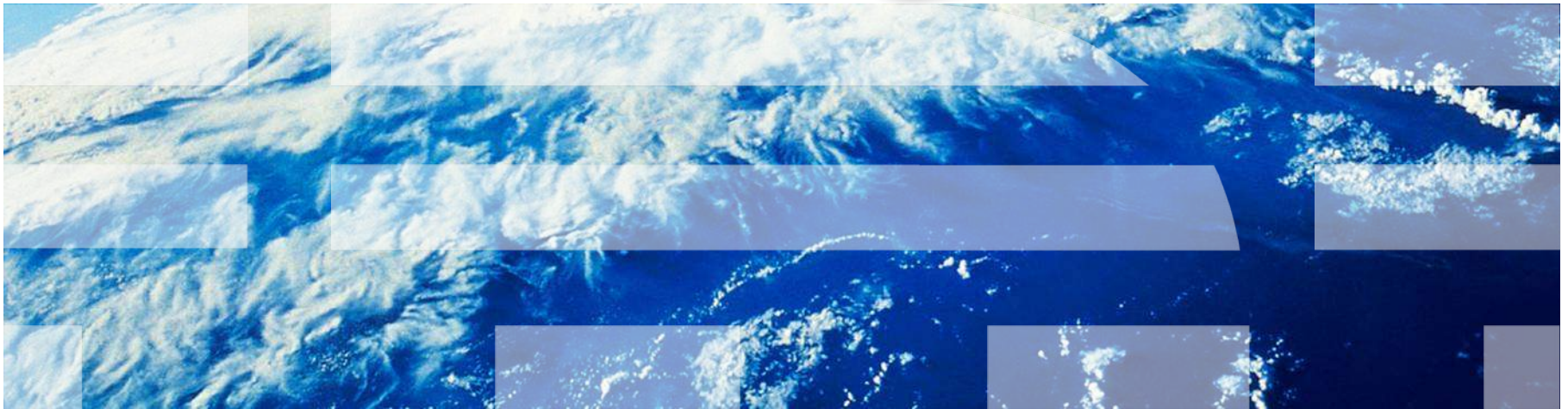


Maximo Everyplace

Ken Rawlings – April 2010

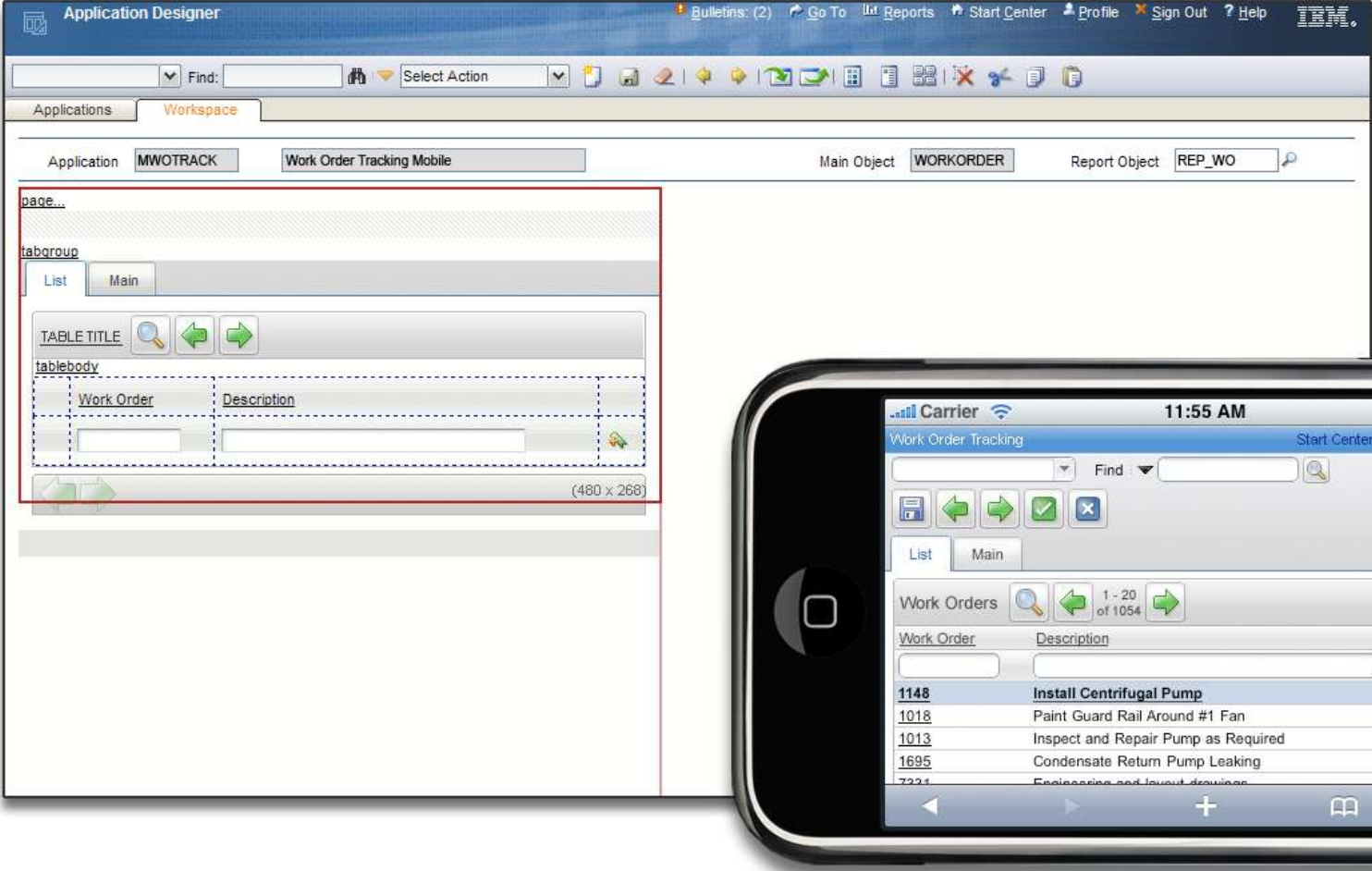


- Access to the same Maximo that you use today through desktop browsers, but with expanded browser support
 - Support for Mobile Safari (for iPhone and iPod touch)
- Ability to configure screens through special Application Designer features for access on mobile devices with supported browsers
 - Screen configuration happens on a desktop machine, not a mobile device

- Customers want quick access to specific Maximo functionality on a mobile device
- They don't want to have to download anything on to the device in order to get access to Maximo (Everyplace is entirely browser based; nothing to install on the device)
- They want the WYSIWYG configuration capabilities that the Maximo Application Designer provides
- They don't want to invest heavily in the Mobile device hardware (an iPhone or iPod Touch starts at \$199 USD)

- Initially available in September 2009 as limited release
- English only
- Requires minimum fixpack level of 7.1.1.5
- Supported browsers:
 - Mozilla Firefox 3.0+ for Windows XP and Redhat Linux desktop
 - Internet Explorer 7.x – Windows XP
 - Vista O/S Client w/Internet Explorer 7.x
 - **Mobile Safari for iPod Touch and iPhone**
- Requires Internet connectivity on devices where Maximo is accessed
 - Nothing to install on the devices
 - No offline support

Application Designer – Create Mobile Applications



Choose the appropriate viewport size in App Designer



The screenshot displays the IBM App Designer workspace for an application named 'WOTRACK' (Work Order Tracking). The 'Viewpoint' dropdown menu is set to 'iPhone wide (480)'. A red rectangular box highlights a portion of the application's user interface, including a tab group with 'List' selected, search and bookmark tools, and a data table with columns for Work Order, Description, Location, Asset, Status, Scheduled Start, Priority, and Site. A black callout line points from the 'Viewpoint' dropdown to the red box, and another line points from the text below to the red box.

Application Designer

Bulletins: (0) Go To Reports Start Center Profile Sign Out Help

Find: Select Action

Applications Workspace

Application WOTRACK Work Order Tracking Is Mobile? Viewpoint iPhone wide (480) Main Object WORKORDER Report Object REP_WO

page...

tabgroup...

List Work Order Plans Related Records Actuals Safety Plan Log Failure Reporting Specifications

Advanced Search Save Query Bookmarks

Work Orders Filter Download

tbody...

Work Order	Description	Location	Asset	Status	Scheduled Start	Priority	Site

iPhone size comes pre-loaded; add others via a domain. The Viewport size corresponds to the size of the red box

Use appropriate look for a touchscreen



The screenshot shows the IBM Application Designer interface. The top menu bar includes 'Application Designer', 'Bulletins: (0)', 'Go To', 'Reports', 'Start Center', 'Profile', 'Sign Out', and 'Help'. Below the menu bar is a toolbar with various icons. The main workspace area shows the following configuration:

- Application: WOTRACK2
- LL Work Order Tracking
- Is Mobile?
- Viewport: iPhone wide (480)
- Main Object: WORKORDER
- Report Object: REP_WO

The preview area shows a mobile-optimized UI with a 'List' tab, 'Work Order' title, search and navigation icons, and a table with columns 'Work Order' and 'Description'. A red box highlights the preview area, and a black arrow points from the 'Is Mobile?' checkbox to the text on the right.

Select Is Mobile checkbox to switch to a look that includes larger fonts and screen elements that are easier to control with your finger instead of a mouse

Example Start Center



Example Work Order Application



Access the new application through any browser



LL Work Order Tracking Start Center Sign Out

Find:

List Work Order

Work Order

Description

Location >>

Description

Asset >>

Description

Status

Priority

Work Type

GL Account >>

Failure Class >>

Problem Code

Owner

Supervisor >>

The Viewport size is saved in the presentation and helps you design better apps in the Application Designer, but it doesn't limit the user's ability to use the same app on different devices. Shown here: a Work Order clone designed for an iPhone screen, but viewed at 1024x768 resolution on a laptop.

- New Application Designer functionality to make designing for different screen sizes easier
- A new look for Maximo applications that can be applied on a per-application basis. It makes interacting with Maximo easier on a touch screen
- No new apps are included. Rather, we're delivering the toolkit in the Application Designer to help customers make their own applications easier to use across a range of devices.
- All the functionality of Maximo 7.1.1.5 is available for use in Maximo Everyplace applications

Q: Does it work on Blackberry?

A: No, not at this time – Blackberry is currently in development on a new 'webkit based' browser that we will evaluate once available

Q: Will it work on other devices, netbooks, tablets, etc.?

A: Maximo Everyplace will work on devices using browsers we currently support like IE 7, so devices like the Panasonic Toughbook as well as many Windows based tablet PCs are supported

Q: Will my custom applications work in Everyplace?

A: Using Application Designer you can redesign and deploy your custom applications for mobile access as long as you are using standard UI controls available in Application Designer

Q: What other browsers/devices are you researching?

A: We intend to add support for more browsers and devices going forward. Browsers using the webkit engine are the most likely targets as they handle Maximo best – they include Android devices (i.e Google Nexus One & Motorola Droid), Symbian devices (Nokia), the new Apple iPad, and in future Blackberry

- Maximo Everyplace does not replace Maximo Mobile
 - Customers may purchase both Maximo Mobile and Maximo Everyplace
 - Maximo Everyplace is for users who are connected “always”
 - No offline capabilities
 - Maximo Mobile is for users who can be disconnected and requires Maximo data while disconnected
- [Maximo Mobile is the mobile solution for remote/disconnected work](#)
- Maximo Everyplace is currently available in limited release
 - Maximo 7.1.1.5 +
 - English only
 - iPhone / iPod Touch only