

Tivoli Common Reporting

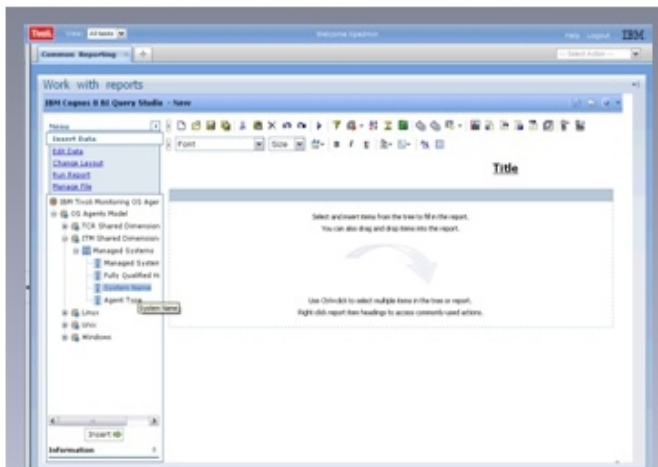
Dan Krissell

November 2011

What is Tivoli Common Reporting

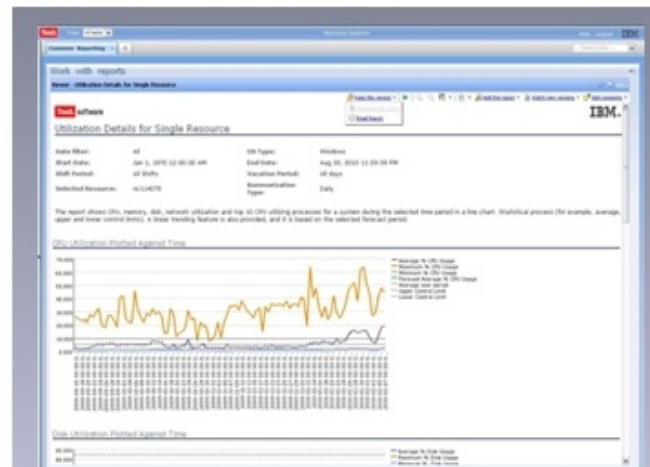
TCR is a common **shared component** across Tivoli. It adds value to Tivoli solutions by **simplifying how information is visualized and shared**

The latest release in the field, v2.1.1, shipped 3Q 2011



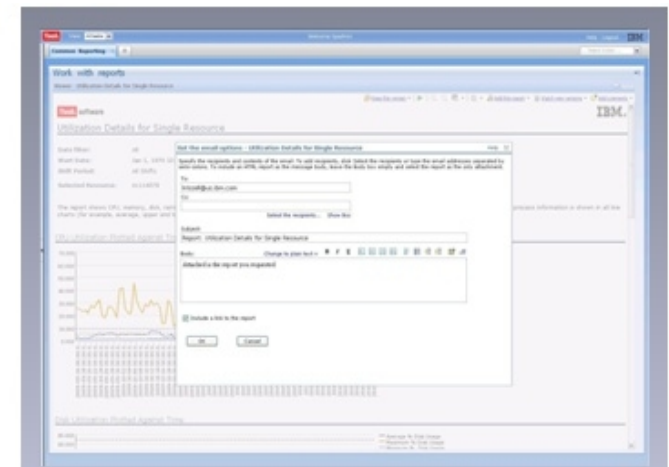
Build custom reports using a drag & drop integrated web-based editor

Author



Single UI for all report formats means common scheduling, distribution, security, and administration

View



Send reports via e-mail, or save for later use. Output in HTML, PDF, Excel, XML, or CSV

Share

Starting in TCR 1.3

Brings industry leading reporting suite to Tivoli customers at no additional charge

1. Simplified report editing

- Launch web-based Report Studio in context from a report
- You can run an out-of-the-box report, and launch the editor in context to customize it

2. Ad-Hoc Reporting

- Create ad-hoc, on the fly reports
- Even novice users will be able to rapidly create reports with intuitive drag & drop function via the Query Studio, allowing for greater report usage with little training

3. Other capabilities

- Automatic emailing of reports
- Additional report formats:
 - XML
 - Excel 2000 & 2000 Single Sheet, 2002, and 2007
 - CSV
- Granular security

Terms and Conditions

- The Program includes IBM Tivoli Common Reporting (“TCR”) which includes the reporting and modeling components of IBM Cognos Business Intelligence (the "IBM Cognos BI Components") which are subject to the following limited use license.
- Licensee is authorized to use the IBM Cognos BI Components only to support Licensee's use of the Program under this Agreement and within the limits of the Proofs of Entitlement for the Program (unless broader rights are provided elsewhere in this License Information document). The phrase "to support Licensee's use" includes only those uses that are necessary or otherwise directly related to a licensed use of the Program. The IBM Cognos BI Components are to be used only by the internal components of TCR for performing reporting and analytics on data that is **(i) generated directly by a Tivoli-branded IBM software product; (ii) user-generated and managed by a Tivoli-branded IBM software product; or (iii) used in conjunction with data in (i) or (ii)**. By way of example of data described in (iii), Licensee may use the IBM Cognos BI Components to report on non-Tivoli-branded IBM software product data which has been joined to another Tivoli-branded IBM software product. The IBM Cognos BI Components may not be used in a stand alone fashion or, except as otherwise specifically provided, with data which is not related to a Tivoli-branded IBM software product.

Authoring and Modeling Components

Query Studio (Web-based)

- Intuitive, self-service “*ad hoc*” reporting
- Drag and drop
- Easy sorting and filtering
- Save, edit, and share

Report Studio (Web-based)

- Create and edit more advanced reports
- Query Studio functions plus
 - Parameterization
 - Globalization
 - Advanced query manipulation
 - Additional chart types (e.g., maps, gauges)

Framework Manager

- Builds the view into the data from the authoring perspective
- Abstracts the data layer from the building of reports
- Defines the relationships, attribute types, organizes data



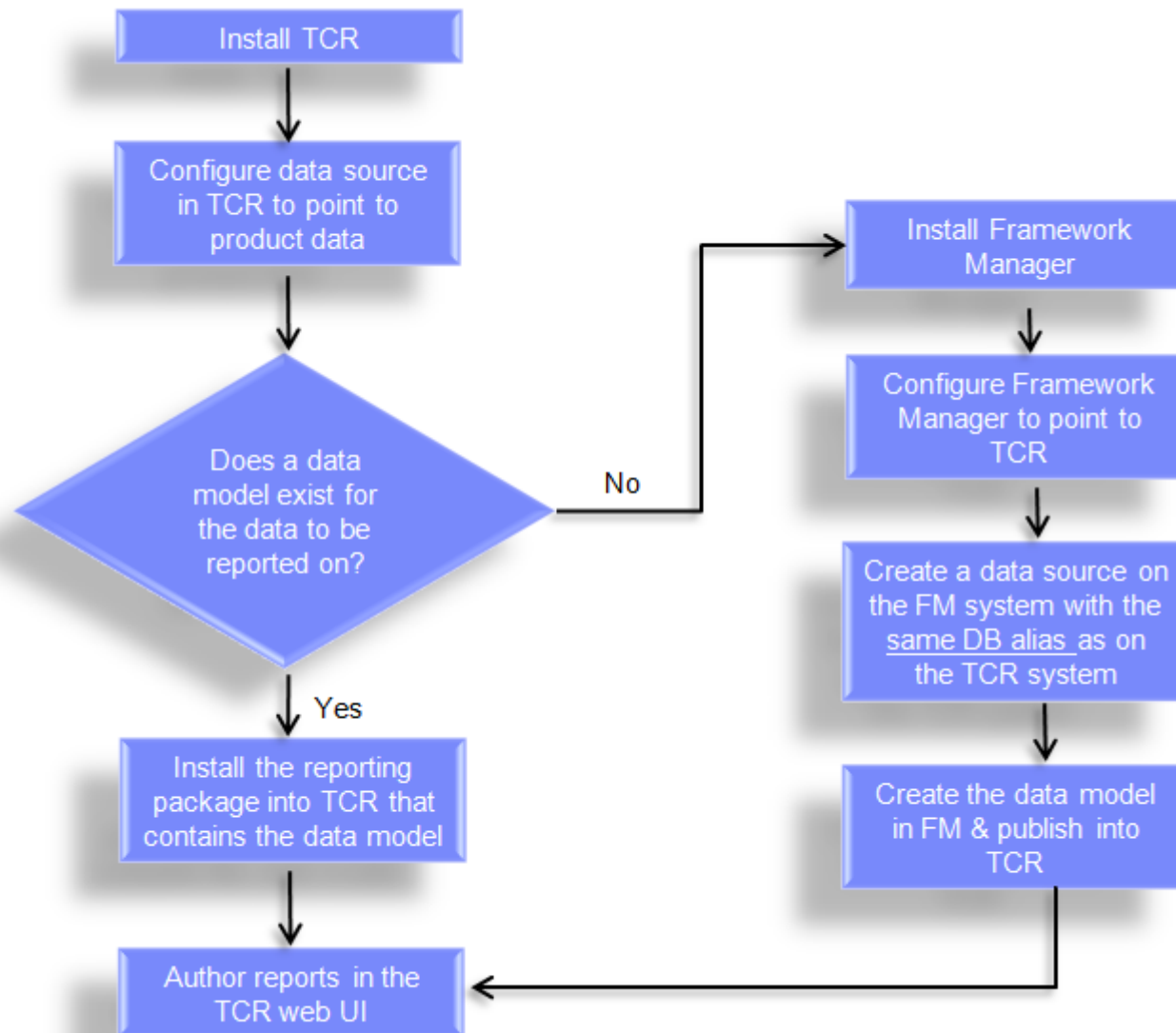
What about existing BIRT-based report?

- Existing TCR customers have a smooth upgrade to the new Cognos Based TCR from the second half of 2010 as part of the TCR 1.3 and onwards
- Current time and effort investment in TCR 1.1 or 1.2 based reports **are not wasted** with the new TCR solution
- TCR 1.1 and TCR 1.2 BIRT based reports **continue to be usable** in the new system
 - If you want to keep using your old reports, or edit them, etc., you can

Converting reports

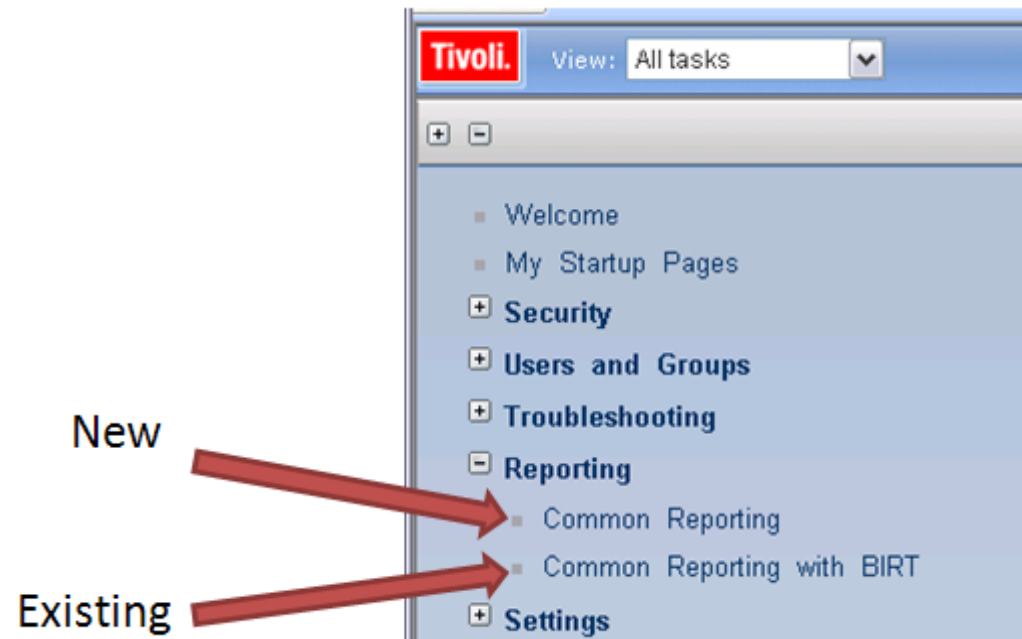
- First, ask your self, “Why am I converting it?”
- If you decide to convert it:
 - There is a Conversion Assistant. It will convert a portion of the report, not the complete report. The user finishes the report.
 - Usually I find it easier to create the report w/o the Conversion Assistant.

Where to Start



How 1.3 is integrated with existing TCR

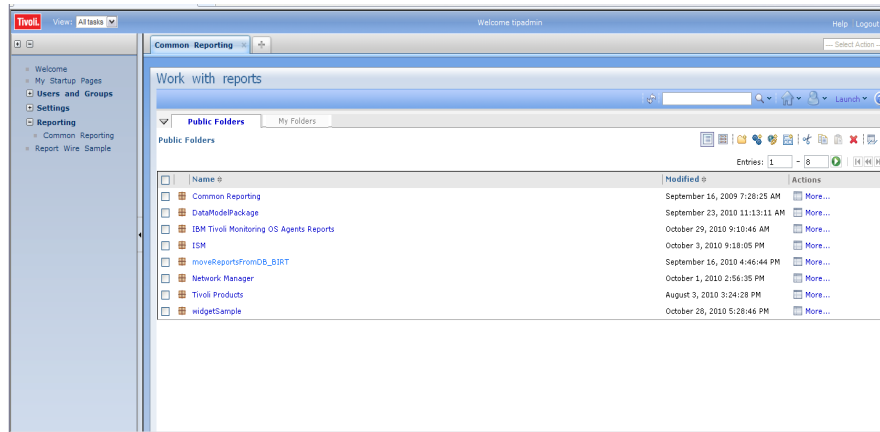
- Adds a new additional reporting portlet in the TCR console
- Existing 1.2 BIRT-based reports are not effected



- Also note that CLI for new Cognos-based reports is not available in 1.3. It was added in 2.1.

What's new in 2.1?

- **Simplified Interface:** All report types in a single common interface - “Common Reporting”
 - This means common report viewing, scheduling, emailing, and administrative functions, regardless of the report type

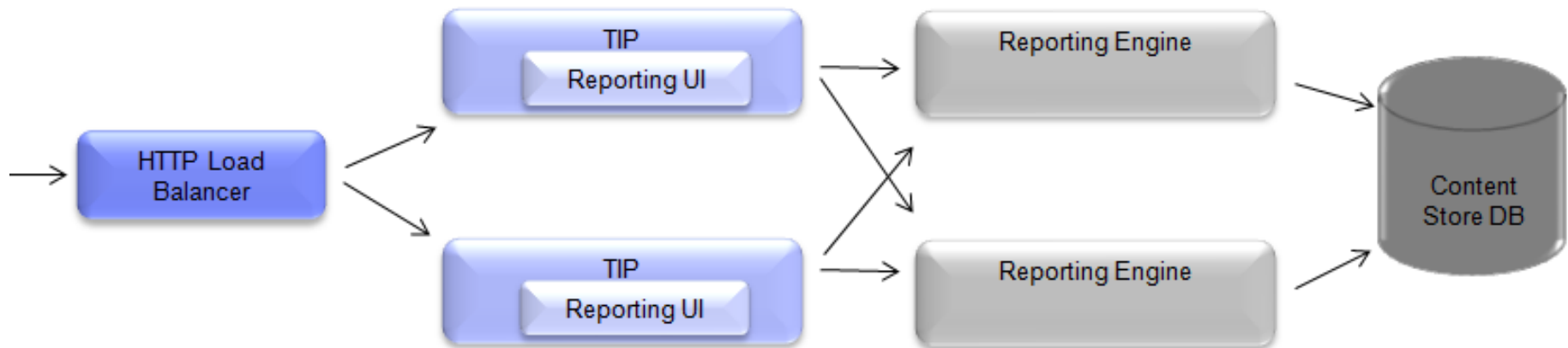


- **Command line interface** for Cognos-based reports
 - Useful for automation
- **Load balancing** of web console to support more concurrent users
- Improved performance in the console console and the reporting engine

What's new in 2.1.1?

- Adds new platforms including **64-bit images** for more scalability
- Align TCR with the new TIP release, v2.2
- Includes **quality improvements**
 - Reporting engine maintenance: over 100 fixes & improvements
 - Install & upgrade rollback capability
 - Avoids environment corruption
 - Saves a lot of energy & time to redeploy from scratch
 - Provide the **prerequisite scanner** tool
 - Significantly improves time-to-value and reduces the risk of failed deployments

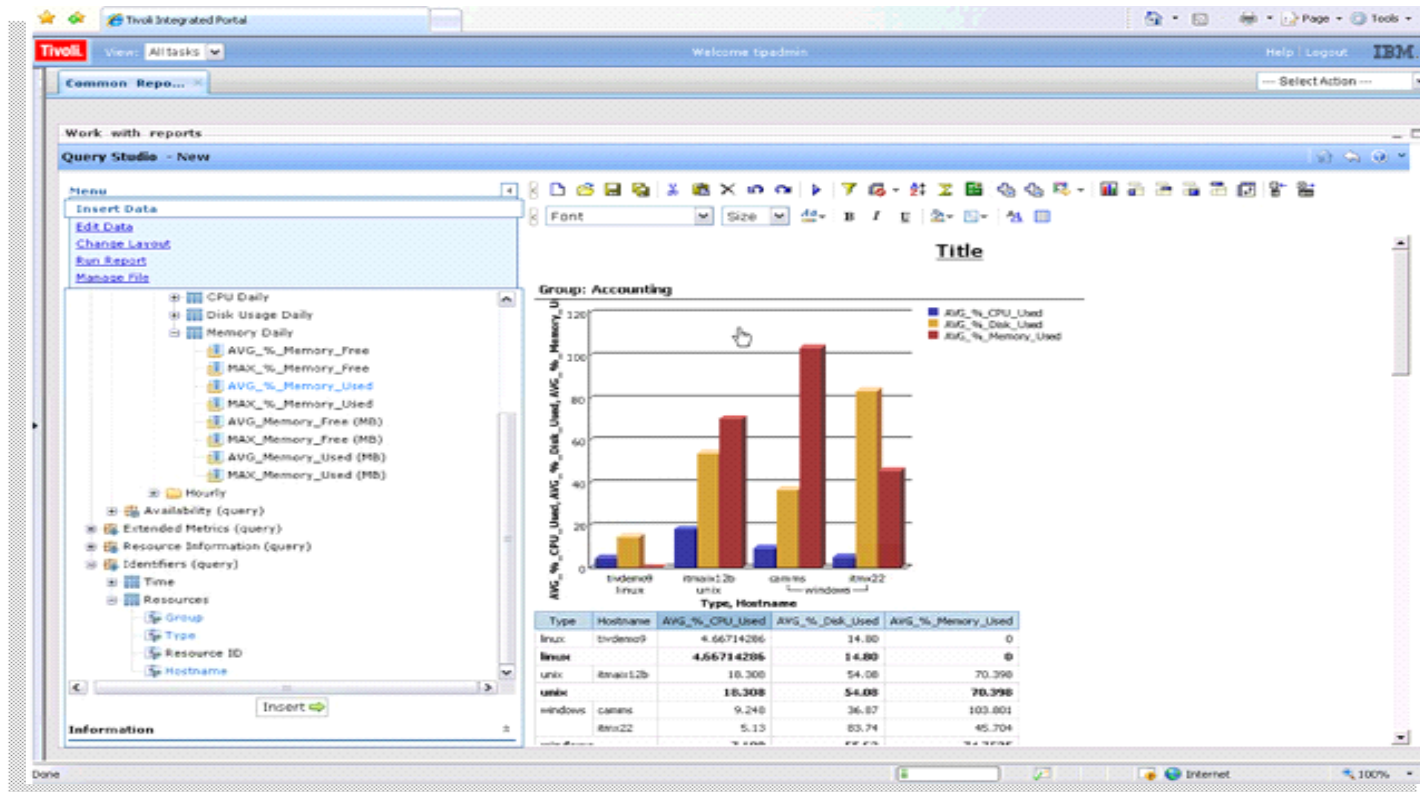
Load Balancing



- Split the TCR installation to have the UI components on one system and the report engine on another system
- Load balance the UI server to support user breadth
- Load balance the report engine server to scale resource on the engine systems

One minute Reporting

- Uses TCR to create a new ITM report in under 60 seconds
 - <http://www.youtube.com/watch?v=RiqnvvQ6Jho>
- Drag and drop of key metrics onto the canvas
- Organized by user defined business groups and operating system



More Videos: https://www.ibm.com/developerworks/mydeveloperworks/wikis/home?lang=en#/wiki/W22ac5f3ebabf_4ff4_bd55_1a897c9a443e/page/Reporting%20Tips%20and%20Techniques

Report Catalog

Asset Management

- IBM Maximo Enterprise Asset Management 7.1 **
- IBM Asset Manager for IT 7.1 **
- IBM Maximo Asset Management 7.1.1.6 (Data Model generation) €**
- IBM Change and Configuration Management Database 7.2.1 (Data Model generation) €**
- IBM Tivoli Asset Management for IT 7.2.2 (Data Model generation)€**

Business Application Management

- IBM Tivoli Business Service Manager 4.2 **
- IBM Tivoli Business Service Manager 4.1.1 **
- IBM Tivoli Performance Analyzer 6.1.1 **

Security Management

- Tivoli Access Manager for e-business 6.1
- Tivoli Federated Identity Manager 6.1 **
- Tivoli Identity Manager 5.0 **

Service Management

- IBM Tivoli Application Dependency Discovery Manager **
- IBM Tivoli Release Process Manager **
- IBM Tivoli Service Request Manager **
- IBM Tivoli Provisioning Manager **
- IBM Tivoli Service Request Manager 7.2.1 (Data Model generation) €**
- IBM Tivoli Application Dependency Discovery Manager 7.2.1 €**
- IBM Tivoli Asset Discovery for Distributed 7.2.2€**

Storage Management

- IBM Tivoli Storage Manager 6.1 **
- IBM Tivoli Storage Manager Fastback 5.5.4 **

Business Partners

- IBM Tivoli Directory Server Agent Reports by Blue Medora
- ITM Agent for Ping Probe Reports by Blue Medora
- ITM Agent for Remote SSL Certificates by Blue Medora

Server Network and Device Management

- IBM Tivoli Monitoring for Energy Management **
- IBM Tivoli Monitoring OS Agent Reports
- IBM Tivoli Monitoring 6.2 VMWare VI Agent
- IBM Tivoli Composite Application Manager for Reponse Time 6.2
- IBM Tivoli Composite Application Manager for SOA 7.1
- IBM Tivoli Composite Application Manager for WS / J2EE
- IBM Tivoli Composite Application Manager for Applications
- IBM Tivoli Decision Support for z/OS
- IBM Tivoli Omegamon XE for IMS 4.1
- IBM Tivoli Omegamon XE for CICS 4.1
- IBM Tivoli Omegamon XE on z/OS 4.1
- IBM Tivoli Omegamon XE for z/VM and Linux 4.1
- IBM Tivoli Omegamon XE for Mainframe Networks 4.1
- IBM Tivoli Omegamon XE for Storage 4.2 **
- IBM Tivoli Omegamon XE for Messaging 7.0 **
- IBM Tivoli Netcool Omnibus 7.2.1
- IBM Tivoli NetView for z/OS 5.3
- IBM Tivoli Network Manager 3.7
- IBM Tivoli System Automation 3.1 **
- IBM Tivoli Monitoring 6.2.2 Fix Pack 2 €**
- IBM Tivoli Netcool Performance Manager 1.3 €
- IBM Tivoli Netcool Performance Manager 1.3.1** €
- IBM Tivoli Monitoring 6.2.2 for Virtual Servers-VMware**
- IBM Tivoli Monitoring 6.2.3 for Virtual Servers-VMware** €
- ITM for Virtual Servers 6.2.3: Citrix XenServer €
- IBM Tivoli Composite Application Manager for Transactions 7.2+ € **
- ITM for System P v6.2.2.1 €
- IBM Tivoli Omegamon XE on z/OS 4.2€
- IBM Tivoli Omegamon XE for Storage on z/OS 4.2€
- IBM Tivoli Composite Application Manager for Applications 6.2.1 €
- IBM Tivoli Composite Application Manager for Applications - Siebel CRM Agent €
- IBM Tivoli Network Manager 3.8 **
- IBM Tivoli Network Manager 3.9 €**
- IBM Tivoli Monitoring 6.2.2 Fix Pack 2+, OS Agents** €
- IBM Tivoli Usage and Accounting Manager v7.1.3 €
- IBM Log Analysis €
- IBM Tivoli Composite Application Manager for Microsoft Applications 6.2.3 €
- IBM Tivoli Monitoring for Energy Management 6.3+ ** €
- IBM Tivoli Monitoring Agent Builder 6.2.3 (Data Model Generation) ** €

Resources

- Online & embedded doc

- Embedded, click the '?' In the reporting portlet. Also context help in various panels.
- TCR: http://publib.boulder.ibm.com/infocenter/tivihelp/v3r1/topic/com.ibm.tivoli.tcr.doc_211/rtrc_soft_and_hard_reqs.html
- Cognos – Guides for admin/security, report authoring, framework mgr, etc:
 - <http://publib.boulder.ibm.com/infocenter/c8bi/v8r4m0/index.jsp?topic=/com.ibm.swg.im.cognos.c8bi.doc/welcome.html>

- Developer Works - Articles, message boards, videos (under wiki-tip & techniques), and report catalog (under wiki)

- <https://www.ibm.com/developerworks/mydeveloperworks/groups/service/html/communityview?communityUid=9caf63c9-15a1-4a03-96b3-8fc700f3a364>

- Support Site

- http://www-947.ibm.com/support/entry/portal/Overview/Software/Tivoli/Tivoli_Common_Reporting
- OR start at IBM Fix Central

- Formal education

- Several Cognos courses, this is a good source for data modeling:
 - http://www-304.ibm.com/jct03001c/services/learning/ites.wss/us/en?pageType=course_description&courseCode=B2452&state=IL&city=Schaumburg&facility=500004794

- QuickStart Services for TCR

- <http://w3-103.ibm.com/software/xl/portal/content?synKey=N947069G59559Z96>
<http://w3-103.ibm.com/software/xl/portal/content?synKey=N947069G59559Z96>