

Maximo Scheduler

A Revised Approach to Work Management

September 2012

Nithiya Parameswaran – Senior Design Architect

Lisa Stuckless – Senior Design Architect

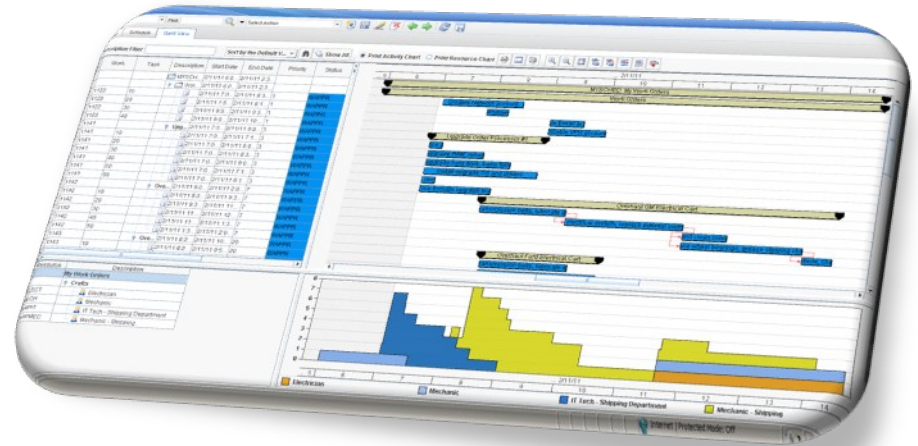
Brian Downey – Senior Design Architect

David Havican – Senior Design Architect

- **Introductions**
- **Scheduler - Our revised view of Work Management**
- **Deep Dive**

Scheduler is now not just a planning & scheduling tool !

- It is a means for simple labor assignments to be made
- It is a Dispatching application where the location of Crews and Labor, and the progress of work can all be monitored
- It is Maximo Everyplace templates designed to make the job of the field technician all that much easier



Roles That We Now Accommodate in Managing the Schedule

Scheduler/Planner



- Defines and adjusts labor/crew availability along with resource leveling
- Capacity Planning
- Assigns work orders to resources
- Continuously optimizes the schedule as the operational environment changes
- Sequence and route work assignments based on geography

Dispatcher



- Monitor field resources and work order progress and status
- Monitor the location of field resources compared to open orders
- Enter status and complete work orders on behalf of technicians who don't have mobile devices
- Sequence and route ongoing work assignments based on geography and optimization

Field Technician



- Supervisor approves and assigns work on mobile devices
- Receive work orders in the field and provide real time status updates to dispatch
- Complete, edit and approve work orders on mobile devices along with viewing work on a map with optimal driving directions
- Notify dispatch of potentially dangerous situations, incomplete work

Our strength has always been in organizations seeking a single product to maintain their assets across all asset classes!

- Utilities
- Manufacturing
- Facilities
- Federal, State, & Municipal gov'ts
- Oil & Gas
- Service Providers

These same organizations desire a single product to create:

- an optimal schedule that is meaningful and achievable
- Quick, easy to perform, and reliable labor assignments
- Be aware of Crew and Labor location, sequenced dispatched work, and be able to effectively deal with new incoming work
- Provide field technicians with a dynamic route of daily work, directions to work locations, a view of nearby work and co-workers, and a means to manage their work, all on a mobile device

What is Maximo Scheduler?



Maximo

**Scheduler is an
add-on product
to Maximo**

**Is installed
when
Maximo 7.5 is
installed**

Maximo Scheduler

**Enabled by the
Scheduler license key**

Gantt View to visualize work orders and tasks

- *Drag & drop work orders & tasks*
- *Manage dependencies*
- *Perform CPM*
- *View resource load and availability*

Work Orders

- *Date constraints*
- *Task dependencies*

Scheduler 7.1

Scheduler 7.1.1

Gantt View to visualize PM forecasts

- View and manage future PMs and Work Orders
- View resource load and availability for both future PMs and Work Orders

Work Orders

- Bulk Reschedule
- Assignment Manager tab in Work Order application

Investing in the natural evolution of our current products in a direction desired by our customers

Enhancements to Scheduler

- Graphical Assignment/Dispatching
- Provision of standard Work Order actions
- Additional Resources
 - Assets/Locations
 - Labor
 - Tools
 - Materials
- Schedule Compliance

Enhancements to Maximo

- Service Addresses
- Public Map UI Control
- Crews

Maximo Everyplace role based templates

**All included as
Maximo Scheduler
7.5.1**

Our Work Management Focus Areas



**Capacity
Planning**

**Resource
Optimization**

Assignment

Dispatching

**Real-time
Communication**

**Forecast Work
Identify Resource
Gaps**

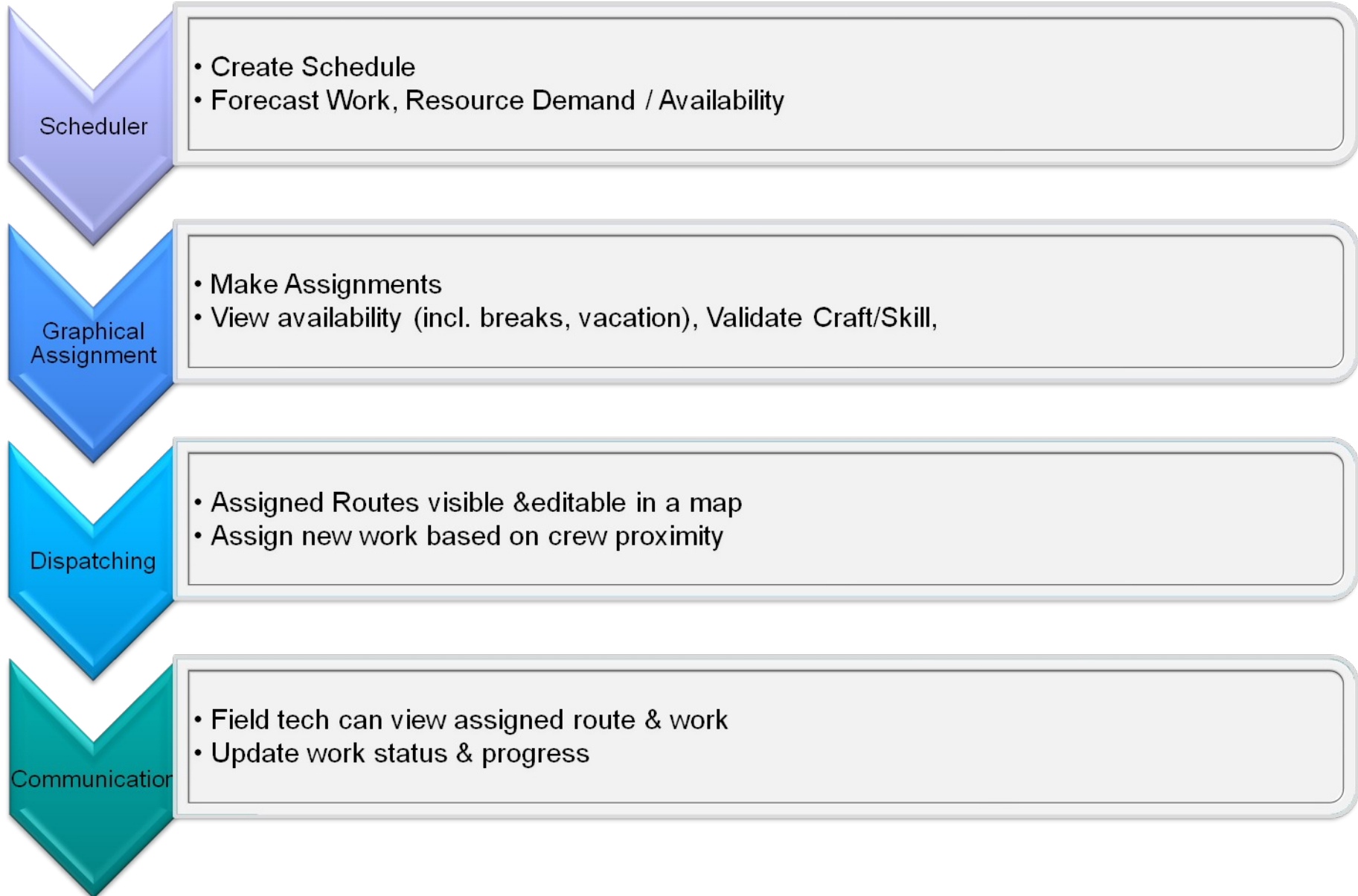
Availability:
• Assets
• Location
• Material
• Tools
• Labor/Crews
Resource Leveling

**Graphical UI
Labor and Crews**

**Graphical UI
Public Map
Control
Route Optimization
Labor and Crews**

**Assign
Emergency Work
Communication
To Field
Technicians**

Schedule Compliance



Work Orders & Labor Requirements



Scheduler Bullets: (0) Go To List Reports Start Center Profile Sign Out Help

Find: Select Action Print Activity Chart Print Resource Chart

... 7/9/09

Work	Task	Description
My Work		
Work Orders		
1001		12 Month Service on Shipping Dept #1 Conveyor
1001	10	Inspect on/off and limit switches.
1001	20	Clean motor.
1001	30	Inspect gear reducer unit. Check gear box oil.
1001	40	Inspect, clean, and lubricate drive chain.
1001	50	Check conveyor belt & pulleys for proper tension.
1001	60	Inspect and lubricate roller bearings and wheels.
1001	70	Operate conveyor to ensure that unit runs quietly.
1001	80	Change oil in gear reducer. Examine drained oil.
1001	90	Record amperage and voltage with motor operating.
1001	100	Replace worn bearings, index plate and bolts.

Resource	Description
My Work	
Crafts	
ELECT	Electrician
INSPECT	Inspector
LUB	Lubricator
MECH	Mechanic

... 7/9/09

■ Electrician
 ■ Lubricator
 ■ Mechanic
 ■ Inspector

Precedence Logic and Activity Constraints

- *Precedence logic added between work orders/tasks that have the same parent*
- *SNE/FNL date constraints calculated automatically from JP/PM offsets*

Predecessors: >>

Select Predecessors

Filter > 1 - 1 of 1 Download

Task	Description	Site	Relationship	Lead/Lag Hours
<input type="checkbox"/>	10 Relocate guard rails to allow fork truck access	BEDFORD	FS	0:00

OK Cancel

Scheduling Information

Target Start: 01/03/12 10:08

Target Finish: 30/11/12 00:00

Scheduled Start: 01/03/12 10:08

Scheduled Finish: 30/11/12 00:00

Start No Earlier Than: 01/04/12 10:34

Finish No Later Than: 31/10/12 20:34

Edit Constraint

Define the relationship between the work records, which will determine the scheduling order. [More information](#)

Predecessor and Successor Activities

Predecessor: First activity

Successor: Second activity

Constraint Type

Finish to Finish

Finish to Start

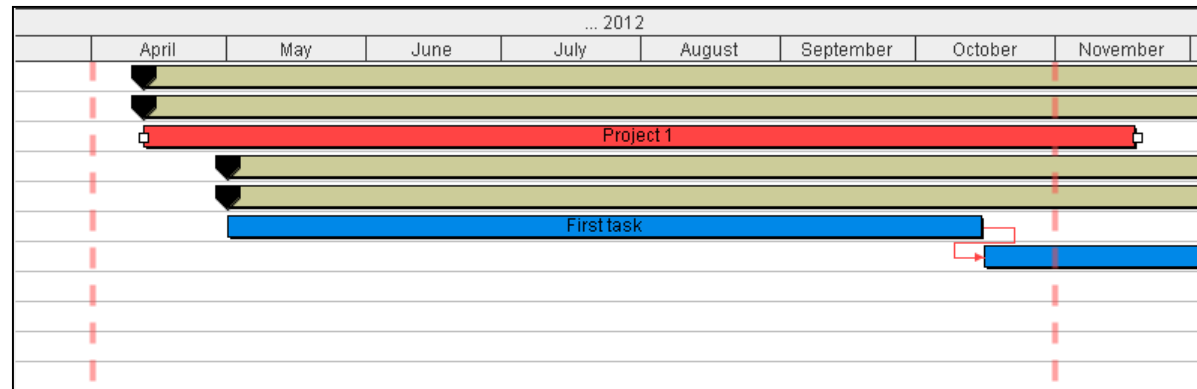
Start to Finish

Start to Start

Lead and Lag

Lead and Lag Time (Hours):: 0:00

OK Cancel



- Generate a forecast based on the PM details. Allow a means to modify forecasted dates and have Maximo use the dates when generating PM based work orders.
- PM Forecast dates are graphically displayed in the Maximo Scheduler Gantt chart.

Generate Forecast

Enter the period of time for which to forecast preventive maintenance records. The forecast can be run in the background. Forecasted dates will appear on the Forecast tab.

Last Forecast Date:

* Forecast Until:

* Forecast For (Days):

Run Forecast Generation in the Background?

Notification E-mail for Forecast Generation:

NOTE: If reforecast is pending, forecast dates will be adjusted appropriately when this action is executed.

Preventive Maintenance

Find: Select Action

List PM Frequency Seasonal Dates Job Plan Sequence PM Hierarchy Forecast

PM: IC-12400 Forklift #2 Quarterly Inspection and Certification Site: BEDFORD Status: ACTIVE

Forecast Dates Locked? Reforecast Subsequent Dates?

Forecast Details Filter 1 - 5 of 5 Download

Forecast Date	Job Plan	New Date	Changed By	Changed Date	Remarks	Reforecast Pending?
4/30/12	INS12100	5/7/12	WILSON	4/30/12 8:01 AM		<input checked="" type="checkbox"/>
7/29/12	INS12100					<input type="checkbox"/>
10/27/12	INS12100					<input type="checkbox"/>
1/25/13	INS12100					<input type="checkbox"/>
4/25/13	INS12100					<input type="checkbox"/>

System Message

BMXAT0194E - Would you like to reforecast subsequent dates in the forecast now? If you select no, the subsequent dates will be updated when the PM Forecast cron task runs.

Scheduler

Bulletins: (0) Go To List Reports Start Center Profile Sign Out Help

Find: Select Action

List Schedule **Gantt View**

Description Filter Sort by the Default V... Show All Print Activity Chart Print Resource Chart

Work	Task	Description	Start Date
	Work Order & Forecasts		11/1/10 12:00 AM
	Preventive Maintenance		11/1/10 12:00 AM
1010	Inspection - with Job Plan Sequence		11/1/10 12:00 AM
1011	Inspection - Has effect on Subsequ...		11/1/10 12:00 AM
1008	Daily Inspection - Forecast Dates L...		11/1/10 12:00 AM
1009	General Inspection - No effect on S...		11/1/10 12:00 AM
	Work Orders		11/1/10 10:08 AM

November

11/1/10 11/2/10 11/3/10 11/4/10 11/5/10

Work Order & Forecasts

Preventive Maintenance

Work Orders

Functionality, Use Cases, and Value by Role



The Planner & Scheduler

Use Case

- Mid-way through a one month project, operations has asked the maintenance manager to assess performance against plan. Maintenance uses the Scheduler to open the monthly schedule and show actual work dates vs. planned dates for the 2 weeks done, and their impact on the remaining work.
- The maintenance director requires a weekly schedule compliance report from every maintenance manager in order to measure the effectiveness of the work scheduling process. They recognize that this metric is an indicator of planning effectiveness, reactive work and craft worker effectiveness.

Problem

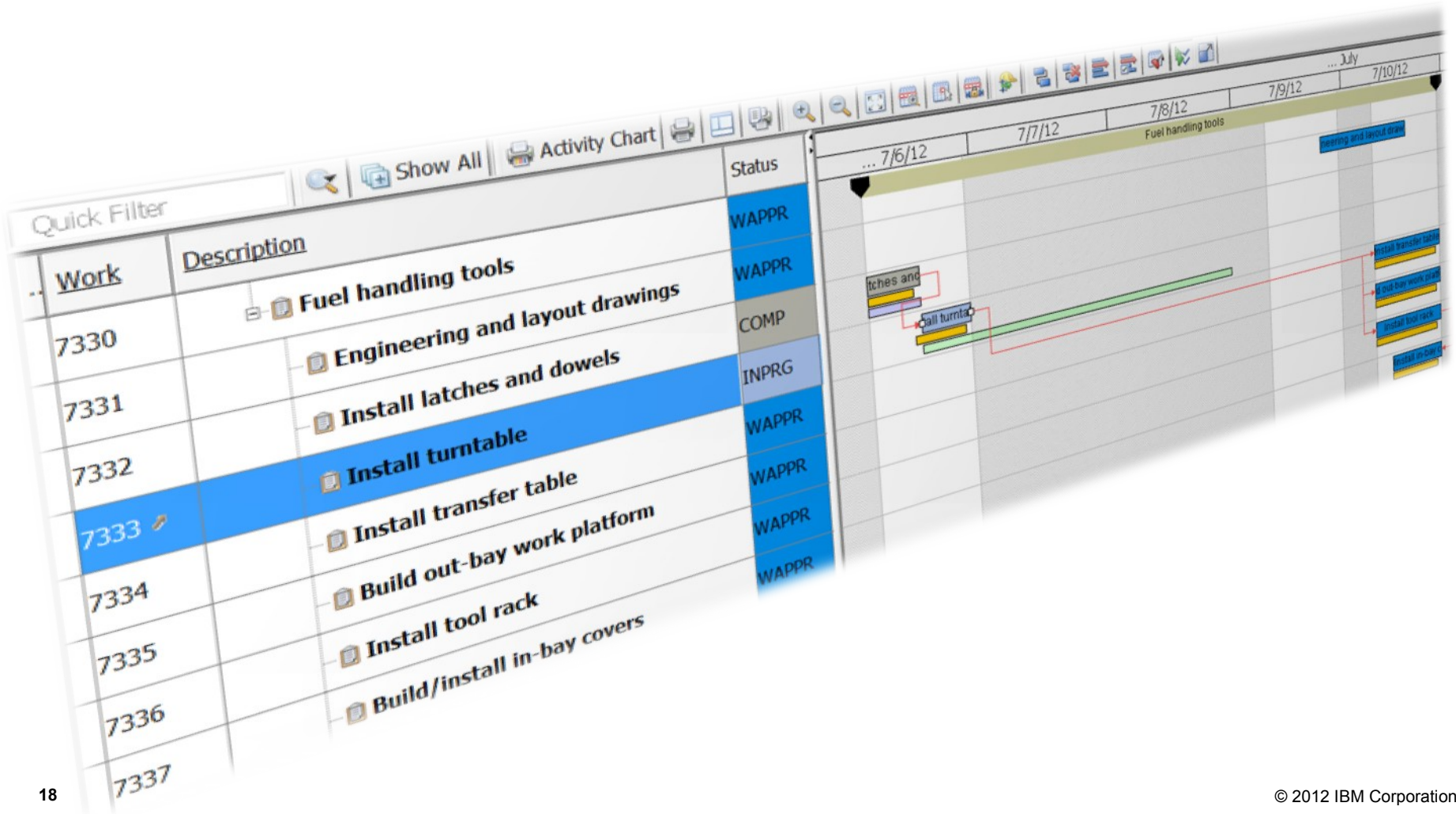
- The Scheduler product shows only work orders Scheduled Date in the Gantt chart. Users need to see the Schedule Date as well as the Actual Dates. This will enable them to compare planned work vs actual work being performed and make necessary changes to following work in order for the overall schedule time demands to be met. There is no ootb means to calculate and store these weekly/monthly metrics to measure planning effectiveness.

Solution

- The new Scheduler application has the capability to graphically show work orders Target Start/End, Scheduled Start/End and Actual Start/End dates in the Gantt view. By default, the Scheduler will show Scheduled Start/End dates offering the user the option of showing all other dates with the click of a button.
- Users have the option to calculate and store the Schedule Compliance metric. A configuration page is available, providing users the ability to set the frequency for this metric (i.e. weekly, monthly and quarterly)

The ability to show Target, Scheduled and Actual Dates on the Gantt chart

- Allows Planners & Schedulers to get a view of how work is progressing, and the affect of the progress on related work



Use case

- Several major PMs are due at the same time due to a busy production schedule. As such, Assets are only available for maintenance at very specific dates/times. The maintenance planner needs to schedule this work during the available time slots
- The floor manager just found out that a turbine will be available for maintenance the next day. He would like to gather all pending work orders on that turbine and its sub assemblies and schedule them during that window of opportunity.
- 5 trucks are due for annual maintenance next week. The operations planner would need to know the availability of the repair bay in various locations so that he can coordinate truck routes such that they will be in the vicinity of the assigned bay in time for maintenance.
- The maintenance manager needs to review next week's scheduled work orders to make sure the parts are in stock. If parts are not available for the work, he will need to reschedule such work orders and replace them with other pending work orders.

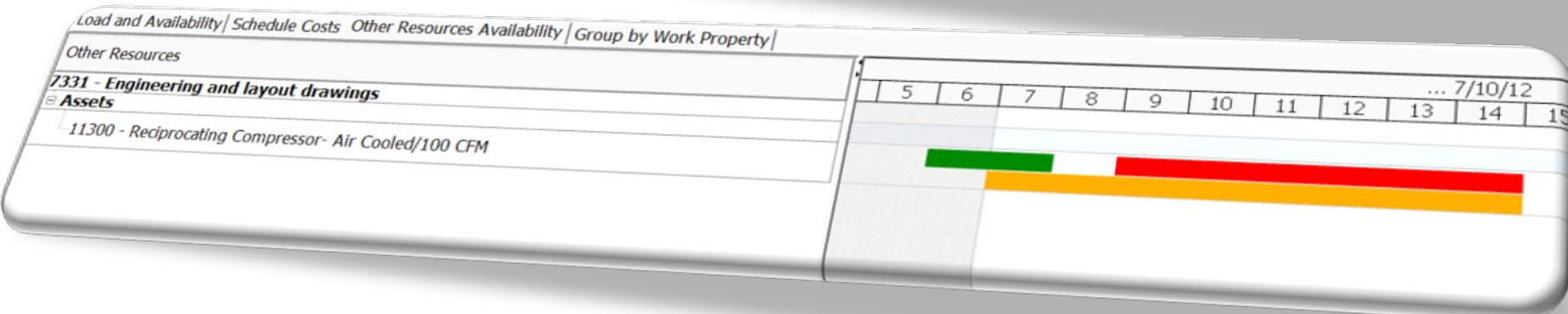
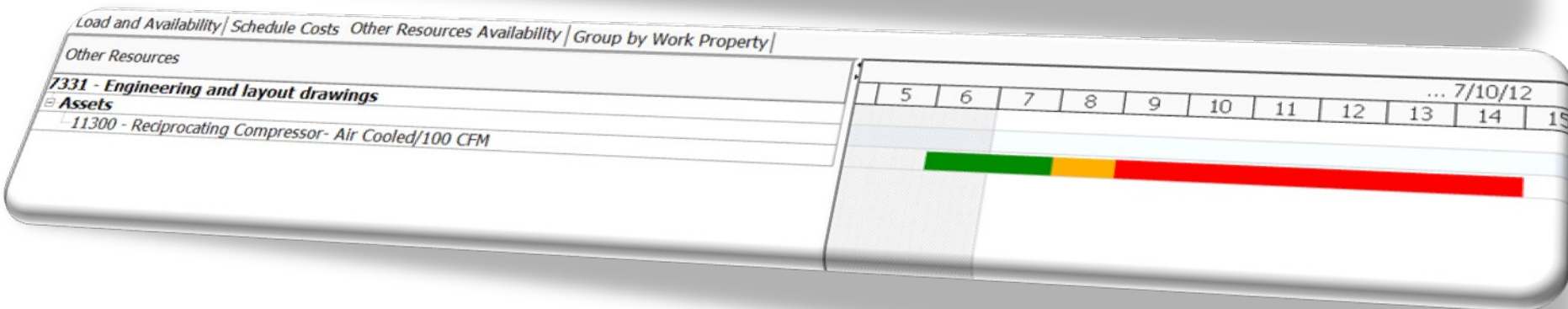
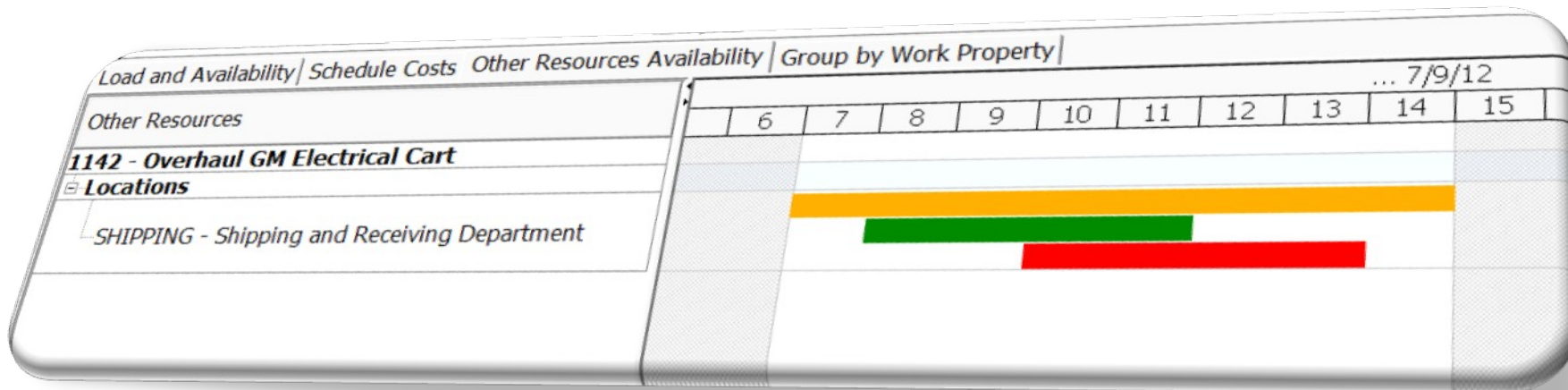
Problem

- The Maximo Scheduler 7.5 product does not provide the planner with visibility to production schedules, Asset and/or Location or Tool availability, or the available stock levels on critical inventory items.

Solution

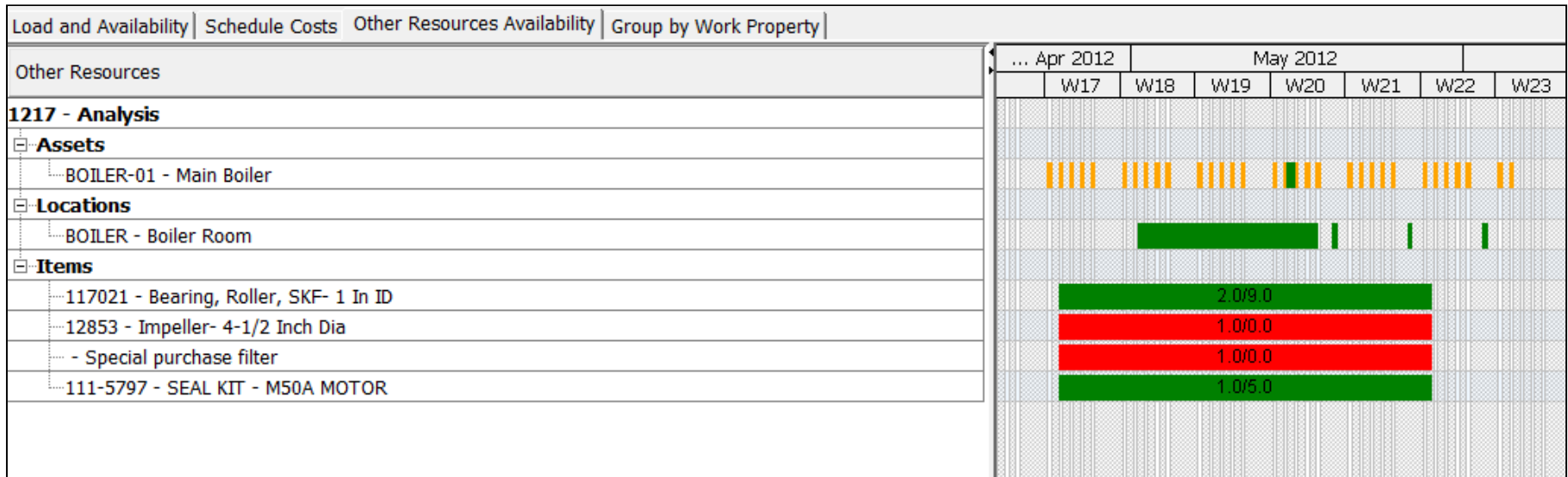
- The new Maximo Scheduler 7.5.1 application now provides a graphical view of Craft, Asset, Location, Materials, and Tools that will allow the planner to schedule work with confidence that other critical considerations can be met.
- Planners will be able to view when equipment will not be running, and when it will be available for maintenance to be performed.
- Planners will be able to avoid reworking schedules due to schedule dates that can not be met due to Asset and/or Location utilization.

Asset & Location Availability



Other Resource Availability tab shows:

- Maintenance/Operational/Calendar availability of Asset and Location
- Material Availability for planned materials
 - Shows required quantity vs available quantity
 - Green bar shows materials are available, red bar shows materials are unavailable
- Planners & Schedulers know when not to schedule work based on material availability



Use Case

- A maintenance planner schedules work orders based on Craft availability. Once he sets the schedule start dates for his work, he would like to change their status from “Open” to “Scheduled”
- A maintenance supervisor, after changing the status of “in progress” work orders to “completed” in the scheduler application, wants to create follow up work orders on few them.

Problem

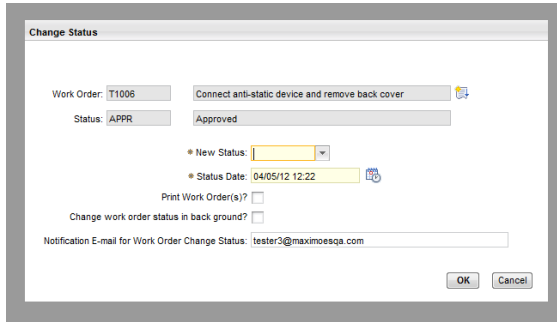
- To perform any work order related actions (i.e. change status, create follow up work etc.) from within the Maximo Scheduler 7.5 application, the user has to hyperlink to the Work Order application.

Solution

- The following work order actions are now available within the new Maximo Scheduler 7.5.1 application.
 - Change Status, Create Job Plan from Work Plan, Initiate Work Flow, Change Parent and Create Follow-up work orders.
- The user can select one or many work orders to perform these actions

Work Order Actions

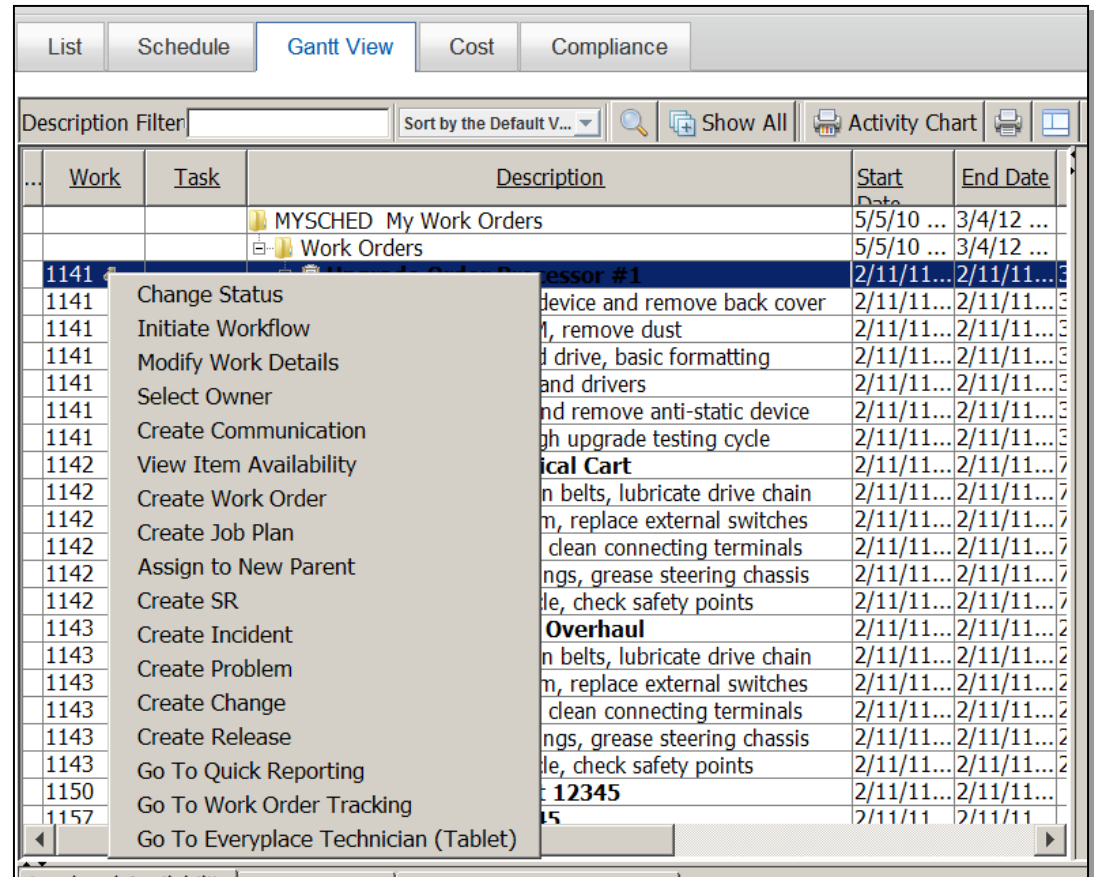
- Allow status changes on multiple work orders/tasks



Additional Toolbar Buttons



- Zoom to Week
- Go To Day
- Constrain horizontal scrolling to the date range containing work
- Filter resources based on selected work orders
- Show/Hide Compliance
- Full Screen



Use Case

- A Planner knows that he only has a given budgeted amount to devote to the project which is currently being scheduled. His management will need to know if that the project can be planned to be done within budget.
- A capital project is partially complete, and the project planner has been asked by executive management for a cost rundown of the scheduled project, progress, etc.

Problem

- The Maximo Scheduler 7.5 product does not provide instant access to projected or current costs run against a schedule or project. A report must be devised through alternative tools to meet this often urgent need.

Solution

- The new Maximo Scheduler 7.5.1 product provides an instant means for a Planner to assess how closely they are keeping to budget with a schedule being defined. For schedules that are underway, it provides a complete breakdown of proposed, committed, and actual costs. This eliminates the need for custom reports to be defined and run, and can assist a Planner in keeping within budget long before the start of a planned project.

Calculate costs within schedule by week, month and year

- Illustrate Committed and Saved Estimated Labor, Materials, Services and Tools, as well as Actual Labor, Materials, Service and Tools
- Allows budget adherence

Scheduler

Find: Select Action

List Schedule Gantt View **Work Cost** Compliance

Schedule:

Last Saved Date:

Last Committed Date:

Week Month Year

Work Cost Filter 1 - 4 of 4

Year	Week	Saved Est. Labor	Actual Labor	Saved Est. Material	Actual Material	Saved Est. Service	Actual Service	Saved Est. Tool	Actual Tool	Committed Est. Total	Saved Est. Total	Actual Total
2005	6	0.00	0.00	0.00	0.00	0.00	0.00	0.00	0.00	432.90	0.00	0.00
2011	7	532.40	175.00	243.22	16.89	0.00	0.00	0.60	0.00	0.00	776.22	191.89
2011	8	119.25	0.00	50.43	276.00	0.00	5,222.00	0.00	0.00	0.00	169.68	5,498.00
2011	10	0.00	0.00	0.00	0.00	0.00	0.00	0.00	0.00	94.60	0.00	0.00

Details

Year: Week: Created Date:

Total Cost		Labor Cost			Material Cost		
Committed Est. Total:	<input type="text" value="0.00"/>	Committed Est. Labor:	<input type="text" value="0.00"/>	Committed Est. Material:	<input type="text" value="0.00"/>		
Saved Est. Total:	<input type="text" value="169.68"/>	Saved Est. Labor:	<input type="text" value="119.25"/>	Saved Est. Material:	<input type="text" value="50.43"/>		
Actual Total:	<input type="text" value="5,498.00"/>	Actual Labor:	<input type="text" value="0.00"/>	Actual Material:	<input type="text" value="276.00"/>		
Service Cost		Tool Cost					
Committed Est. Service:	<input type="text" value="0.00"/>	Committed Est. Tool:	<input type="text" value="0.00"/>				
Saved Est. Service:	<input type="text" value="0.00"/>	Saved Est. Tool:	<input type="text" value="0.00"/>				
Actual Service:	<input type="text" value="5,222.00"/>	Actual Tool:	<input type="text" value="0.00"/>				

Making Labor Assignments With Graphical Assignment

Use Case

- Part of a maintenance supervisors role is to assign work to maintenance technicians or crews based on their skill and availability. To do this quickly and accurately, they need to view their current assignments, break time, shift and vacation time.

Problem

- Prior versions of Maximo do not provide a graphical representation of daily availability of technicians and crews. The current Assignment Manager is form based, without the ability to “drag and drop” assignments, hence this is a laborious process

Solution

- A new Graphical Assignment application is now available within the Maximo Scheduler 7.5.1 product that provides drag and drop capability, along with the visibility of all other critical factors (current assignments, vacation and break time, for proper assignments to be made.
- Illustrates unassigned work and facilitates efficient assignment of appropriate technicians or crews based on craft or crew type.
- Provides effortless reassignment of work from one technician/crew to another, as well as the ability to split work among technicians/crews.

New application aimed at the process of assigning work to people

- Similar UI to Scheduler Gantt view for consistency
- Helps the Planner & Scheduler see non work time for a resource, as well as assignments made by other Foremen beyond the bounds of their schedule... eliminates duplicate labor assignments

The screenshot displays the 'Graphical Assignment' application interface. At the top, there's a navigation bar with 'List', 'Work List', 'Gantt View', and 'Dispatch View' tabs. Below this is a 'Quick Filter' section with various icons. The main area is divided into two parts: a table on the left and a Gantt chart on the right.

Work	Task	Descri...	Start Date	End Date	Priority	Status	Asset	Location	Interrupti...	Resources
LONB1159			29/05/12 ...	29/05/12 ...	9	APPR	LON104	LON104	N	
LONB1161			29/05/12 ...	29/05/12 ...	12	APPR	LON105	LON105	N	
LONB1162			29/05/12 ...	29/05/12 ...	6	APPR	LON106	LON106	N	
LONB1163			29/05/12 ...	29/05/12 ...	2	APPR	LON107	LON107	N	
LONB1164			29/05/12 ...	29/05/12 ...	8	APPR	LON122	LON122	N	
LONB1165			29/05/12 ...	29/05/12 ...	1	APPR	LON108	LON108	N	
LONB1167			29/05/12 ...	29/05/12 ...	2	APPR	LON117	LON117	N	
LONB1170			29/05/12 ...	29/05/12 ...	7	APPR	LON119	LON119	N	
LONB1172			29/05/12 ...	29/05/12 ...	3	APPR	LON109	LON109	N	
LONB1173			29/05/12 ...	29/05/12 ...	4	APPR	LON120	LON120	N	

The Gantt chart on the right shows a timeline for 'Tue May 29, 2012' with days 3 through 23. It displays various task bars and resource assignments, including labels like 'for L', 'for Lg', and 'Assignment'.

Below the main Gantt chart is the 'Resource Schedule' section, which includes a table for resource availability and another Gantt chart for resource assignments.

Resource	Description	Default S...	Shift	Default vendor
Create London SLRs				
Crafts				
CARP	Carpenter			
LONLIBER	Diane Lit	FIRSTCLA...	DAY	
Mechanic				
LONHENRY	Earl He	FIRSTCLA...	DAY	
LONSTAN	Fred Stan	SECONDC...	DAY	
Electrician				
LONFORD	Jerry Fi	FIRSTCLA...	DAY	

The resource Gantt chart shows assignments for resources like NB11, LONB116, and LONB117, with labels like 'for London' and 'Lond'.

Allows the Foreman to:

- Split Work According to Shifts, might be used if extending duration of the assignment across an end of shift
- Split Work, once split can drag second assignment to add a time gap
- Split Work into Three Records, creates two additional assignments
- Create Assignment
- Delete Assignment

Graphical Assignment

Find: Select Action

List Work List **Gantt View** Dispatch View

Quick Filter Show All Activity Chart

Work	Task	Description	Start Date	End Date	Priority
		TEST01 Next Week Schedule	08/05/12 ...	29/05/12 ...	
		Work Orders	08/05/12 ...	09/05/12 ...	
1205	Test 01	Assignment	08/05/12 ...	08/05/12 ...	
		Test 01(MECH)	08/05/12 ...	08/05/12 ...	
		Test 01(ELECT)	08/05/12 ...	08/05/12 ...	
1206	Test 02	Assignment	09/05/12 ...	09/05/12 ...	

Resource Schedule | Other Resources Availability

Resource	Description	Default S...	Shift	Default vendor
Next Week Schedule				
Crafts				
MECH	Mechanic			
JEFFE...	Andrew Jeffery	FIRSTCLA...	DAY	EMI
JOS	Jos Torry	SECONDC...	DAY	
ELECT	Electrician			
BALL	Allan Ball	FIRSTCLA...	DAY	
POTTER	Dom Potter	FIRSTCLA...	DAY	CMC

Graphical Assignment

Find: Select Action

List Work List **Gantt View** Dispatch View

Quick Filter Show All Activity Chart

Work	Task	Description	Start Date	End Date	Priority
		TEST01 Next Week Sch...	08/05/12 ...	29/05/12 ...	
		Work Orders	08/05/12 ...	09/05/12 ...	
1205	Test 01	Assignment	08/05/12 ...	08/05/12 ...	
		Test 01(ME...	08/05/12 ...	08/05/12 ...	
		Test 01(EL...	08/05/12 ...	08/05/12 ...	
1206	Test 02	Assignment	09/05/12 ...	09/05/12 ...	

Resource Schedule | Other Resources Availability

Description	Default S...	Shift	Default vendor	Res...
Next Week Schedule				
Crafts				
Mechanic				MECH
Andrew Jeffery	FIRSTCLA...	DAY	EMI	JEFFE...
Jos Torry	SECONDC...	DAY		JOS
Electrician				ELECT
Allan Ball	FIRSTCLA...	DAY		BALL
Dom Potter	FIRSTCLA...	DAY	CMC	POTT...

The Dispatcher

Use Case

- The dispatcher is notified at the start of the shift that Crew1 will not be available today, so all of their priority 1 work needs to be rerouted and reassigned to other crews in order for that work to be completed today.
- The Dispatcher has received an emergency work order for the northeast part of the city that needs to be worked on within the next 2 hours.

Problem

- There is no easy way for the Dispatcher to view all of the current routes and where the work or resources are located throughout the city in an efficient manner .
- The Dispatcher needs to have a single view showing all of the today's routes on a map along with their work locations. They also need to have the ability to quickly assign new work to a crew and re-optimize their work route.

Solution

- The new Dispatching application within the Maximo Scheduler 7.5.1 product allows the Dispatcher to:
 - Utilize maps to show street-level routes (SLRs) on a map, location of labor or crew resources.
 - Quickly drag and drop new work to a crew at the “beginning of the shift scramble” when time is limited to rearrange schedules for the day.

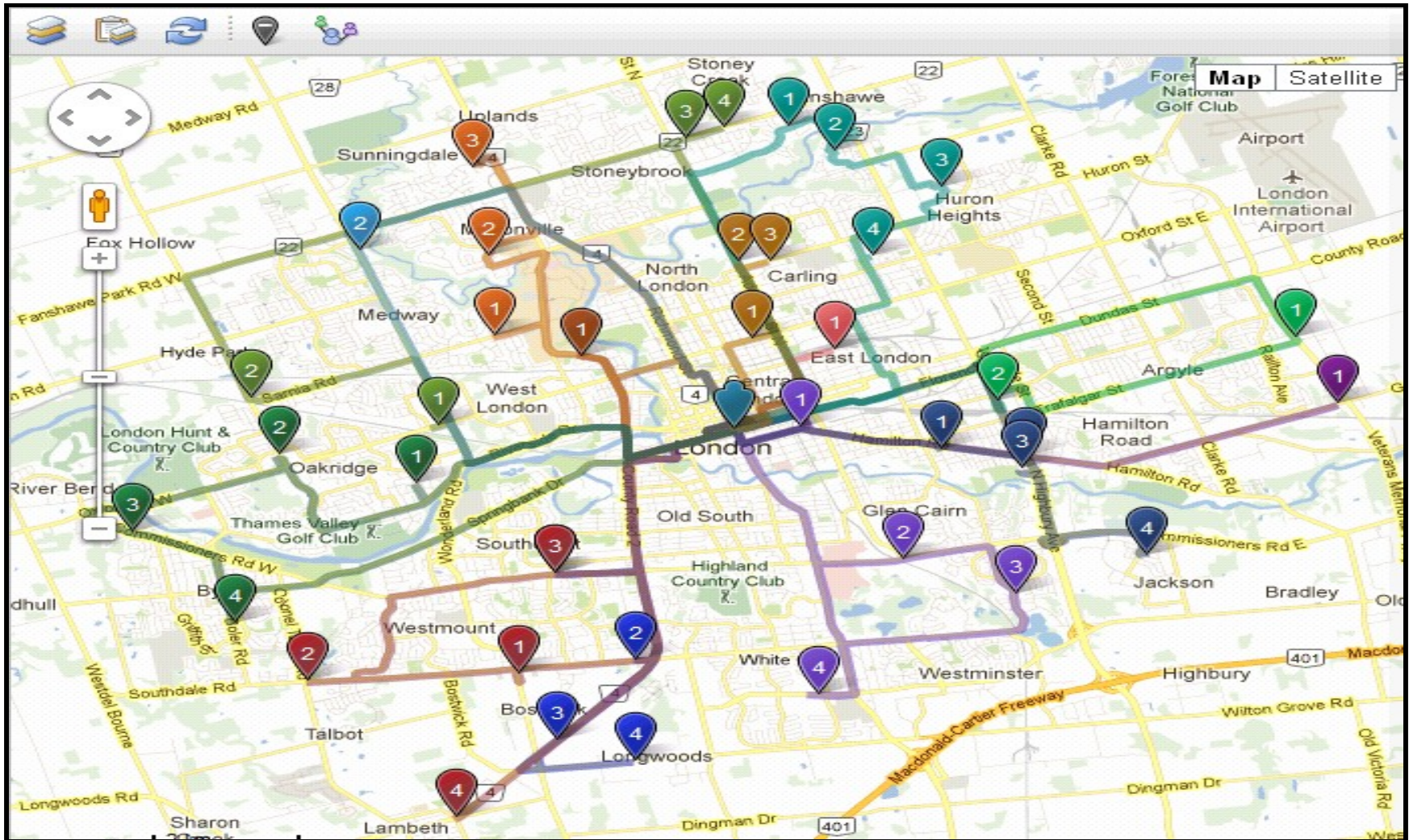
- Dispatcher views the map with applicable Crew or Resource routes as defined by assignments.
- View each Crew or Resource calendar

The screenshot displays the 'Dispatch View' interface. On the left, a 'Labor and Crews' table lists various resources and their assignments over a week. A yellow callout labeled 'Calendar View' points to this table. On the right, a map of London shows routes for these resources, with colored markers and lines indicating their paths. A yellow callout labeled 'Map View' points to this map. The interface includes navigation tools like zoom and pan, and a toolbar at the top with options for 'List', 'Work List', 'Gantt View', and 'Dispatch View'.

Labor and Crews	6	7	8	9	10	11	12	13	14	15
LONFORD				LDNA1154		LDNA1158	LDNA1156		LDNA1205	
LONHENRY			LDNA1159	LDNA1181		LDNA1162	LDNA1169			
LONHUNT		LDNA1165	LDNA1172	LDNA1150		LDNA1171				
LONLIBER		LDNA1184	LDNA1153		LDNA1174		LDNA117			
LONOHL1					LDNA1206					
LONOHL2			LDNA1208			NA1				
LONOHL3			LDNA1300							
LONOHL4		LDNA1224		LDNA1125				LDNA1226		
LONOHL5		LDNA1296	LDNA1209		LDNA1299			LDNA1297		
LONSNOW 1			LDNA1212				LDNA1212			
LONSTAN		LDNA1220	LDNA1221			LDNA1222		LDNA1223		
LONWAT1			LDNA1215							
LONWAT2		LDNA1301	NA18	LDNA1303				LDNA1304		
LONWILSO		LDNA1195	LDNA1187						LDNA1189	

Dispatch – Map View

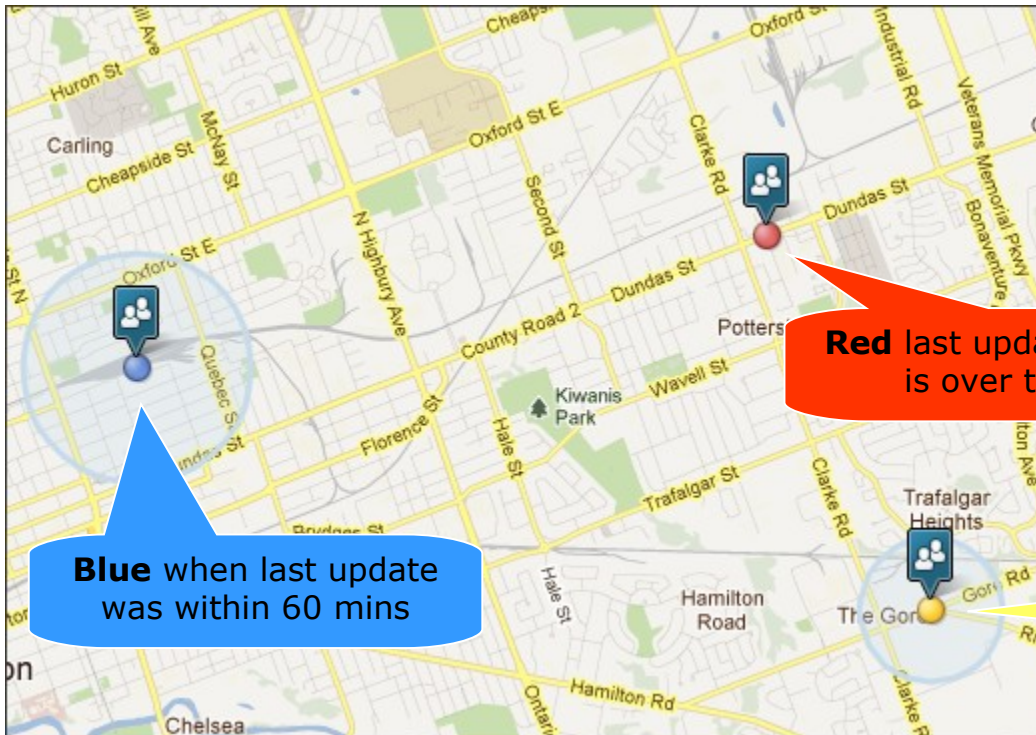
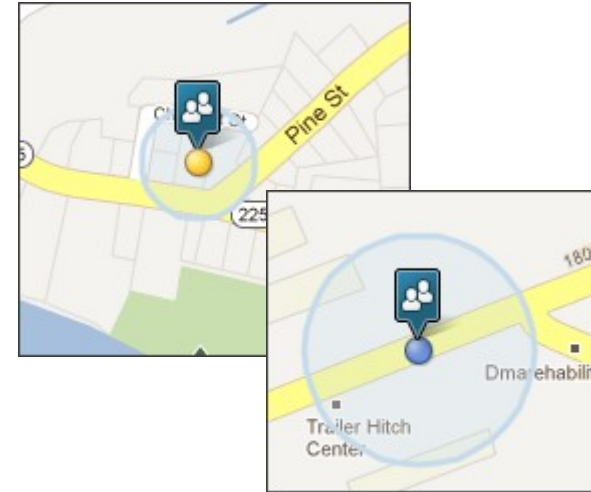
- Show each sequence of assignments and relative location for each Labor or Crew
- View nearby Crews and Resources, unassigned work, prioritized work,



Labor & Crew Geolocation Tracking

Browser geolocation API tracks the user

Allows Dispatcher to know the location of all resources and/or Crews – allows for making better dispatching decisions



Red last update accuracy is over the limit

Blue when last update was within 60 mins

Yellow last update outside 60 mins

The Mobile Field Technician

Use Case

- The field technician is assigned work from the Dispatcher, and needs a way of acknowledging receipt, taking ownership, and knowing where the work needs to be performed.
- The field technician has finished his assigned work order early and has time available for other work, but does not know where any nearby work may be.
- An apprentice field technician is working on a job, but encounters a problem that they know can be resolved by a Journeyman Mechanic. They are fairly certain that a nearby resource exists, but unsure where and how best to reach them.
- The Foreman is made aware of a new work order assigned to his team, and needs to see where his resources are located and the work which they are engaged in so that he may appropriately assign the work.

Problem

- The field technician has no way to determine where work is located, where nearby unassigned work may be located, or where neighboring resources may be.
- The Foreman can not see how, spatially, his work team is dispersed, or the status of their work, to determine who the best resource would be to assign new work to.

Solution

- The existing Maximo Everyplace mobile offering has 4 new templates provided as part of the Maximo Scheduler 7.5.1 product.
 - **Everyplace Technician (Tablet)** Large Screen Heavy Technician Functionality
 - **Everyplace Technician (Phone)** Small Screen Heavy Technician Functionality
 - **Everyplace Technician (Lite)** Small Screen Light Technician Functionality (Inspector, Break/Fix, Rapid Dispatch)
 - **Everyplace Supervisor** Small Screen Supervisor Functionality
- Enable Field Technicians and Foremen to view maps displaying current and assigned work, location of nearby resources, unassigned work, turn by turn directions to next assignment, feedback on assigned work

Field Technician Application



Everyplace Technician (Tablet) +

4201	Inspect all pumps		APPR
4205	Annual Pump Maintenance	11430	APPR

Select Records

1 - 11 of 11

Map View

Map Satellite

Field Technician's Work Order Route

Field Technician Application – My Work



Everyplace Technician (Tablet) - Mozilla Firefox: IBM Edition

File Edit View History Bookmarks Tools Help

9.32.229.192/maximo/ui/?event=loadapp&value=techttablet

Most Visited IBM My Yahoo! Comcast RTC: Maximo Plans Mobile Dev Wiki Facebook

Everyplace Technician (Tablet)

Required Materials

Item	Description	Storeroom	Quantity
11241	Contactor, Renewal Kit	CENTRAL	3.00
11453	Seal, Mechanical, Self Aligning- 1 In ID	CENTRAL	3.00
XMP-9500	Gasket- AR46	CENTRAL	3.00
Z-RAGS	Rags, Cloth	CENTRAL	2.00

Required Tools

Tool	Description	Storeroom	Quantity
TORQUE	TORQUE WRENCH-20 FT-LB CAPACITY		3.00

Field Technician's Street Level Route

Field Technician's Material Requirements

Field Technician's Tool Requirements

Field Technician Application – Details



Everyplace Technician (Tablet) - Mozilla Firefox: IBM Edition

File Edit View History Bookmarks Tools Help

9.32.229.192/maximo/ui/?event=loadapp&tvalue=techttablet

Most Visited IBM My Yahoo! Comcast RTC: Maximo Plans Mobile Dev Wiki Facebook

Everyplace Technician (Tablet)

Start Center Sign Out

My Work Details Resources Results

Work Order 4205

Annual Pump Maintenance

Work Type PM

Priority 88

Status APPR

Service Address 20 Ernies Dr, Littleton, MA 01460, USA

Location BR430

Condensate Return Pump- Centrifugal/10

Asset 11430

Centrifugal Pump 100GPM/60FT HD

Classification PUMP \ CNTRFGL

Centrifugal Pump

Start Date / Finish Date

Scheduled

Actual

Toolbar Actions:

- Query Tools
- New / Follow-up Work Order
- Status Change
- Stop / Start Timers
- Attach Documents

View work order details

Field Technician Application – Resources



Everyplace Technician (Tablet) Start Center Sign Out IBM

Find: []

My Work Details Resources Results

Work Order LON5116
Work Order for London 105

Planned Materials 0 - 0 of 0

Planned Tools 0 - 0 of 0

Labor Assignments 1 - 2 of 2

Task	Labor	Craft	Skill Level	
	LONHENRY	MECH	FIRSTCLAS	
	WILSON	ELECT	FIRSTCLAS!	

Available Labor Complete Assignment New Row

1 - 2 of 2

**Planned Materials,
Tools and
Labor/Crews**

Field Technician Application – Time Reporting



Mobile Worker LH - Mozilla Firefox: IBM Edition

File Edit View History Bookmarks Tools Help

http://maxdevp7b.swg.usma. Google

Most Visited IBM My Yahoo! Comcast RTC: Maximo Plans IBM

Mobile Worker LH

Confirm Timer

The Timer is going to record the time you have spent managing your

Ticket Class

Record Key

Review the information below before submitting.
You may update the values and click 'OK' to submit.
Click 'Cancel' to return to the record; the Timer will continue to run.

Start Date

Start Time

Finish Date

Finish Time

Hours

Complete Workorder?

OK Cancel

	11430	O-PRESSU	
	11430	RUNHOURS	

1 - 2 of 2

Transferring data from maxdevp7b.swg.usma.ibm.com...

- **Use Maximo Scheduler to:**

- Find the optimal time to schedule upcoming work by balancing:
 - Work order and Task relationships and constraints
 - Labor, Asset, Location, Craft, and Material availability
- Drag and drop labor assignments

- **Increase the visibility of resources and crews by:**

- Leverage map UI control for dispatching of incoming work
- Monitor progress of existing work
- Manipulate crew and resource routes

- **Improve efficiency of field technicians**

- Leveraging map UI control for viewing of route stops
- Dynamic work list based on dispatched work and automated optimization
- Communication with neighboring resources
- Intuitive feedback from mobile applications

