



IBM Maximo Spatial Asset Management

João Souto Maior, GIS and Mapping Architect – IBM

Terry L. Saunders, Worldwide Utilities Industry Leader, E&U



Product Presentation

Vision



Enhance Maximo to support spatial analysis and visualization to manage assets across wide geographies..

Support s the design, construction, maintenance and work management for new and existing infrastructure in Utilities, Oil & Gas, Cities, Municipalities, States, Provinces, government and military organizations..

Further development is now focused on supporting Smart Grid and Smarter Planet, features and capabilities to maximize business operations with advancing technology

The Integration Framework supports the customer ecosystem of software products and future development will provide GIS interoperability.

Only vendor in the leader’s quadrant in Gartner’s Analysis of Enterprise Asset Management for Generation and Energy Delivery.

History

IBM Maximo worked with Business Partners to deliver GIS integration prior to Maximo 6

First release of Maximo Spatial Asset Management was packed with Utilities in v 6.3.3, adding a map tab to Assets, Locations, Work Orders and Service Requests.

GIS integration to ESRI ArcGIS server supporting geo-spatial management capabilities for Maximo asset/work management system released as individual Product in December 2008.

Maximo for Spatial Asset Management 7.1.1 added Service Address application for premise geo-coding and new Architecture using the REST API in December 2009.

Default Version Editing and Secured Map Services added in Q4 2010.

Many enhancements planned for 2011 release

Maximo Spatial Supports DB2, Oracle & SQL Server.

Utility clients / development partners

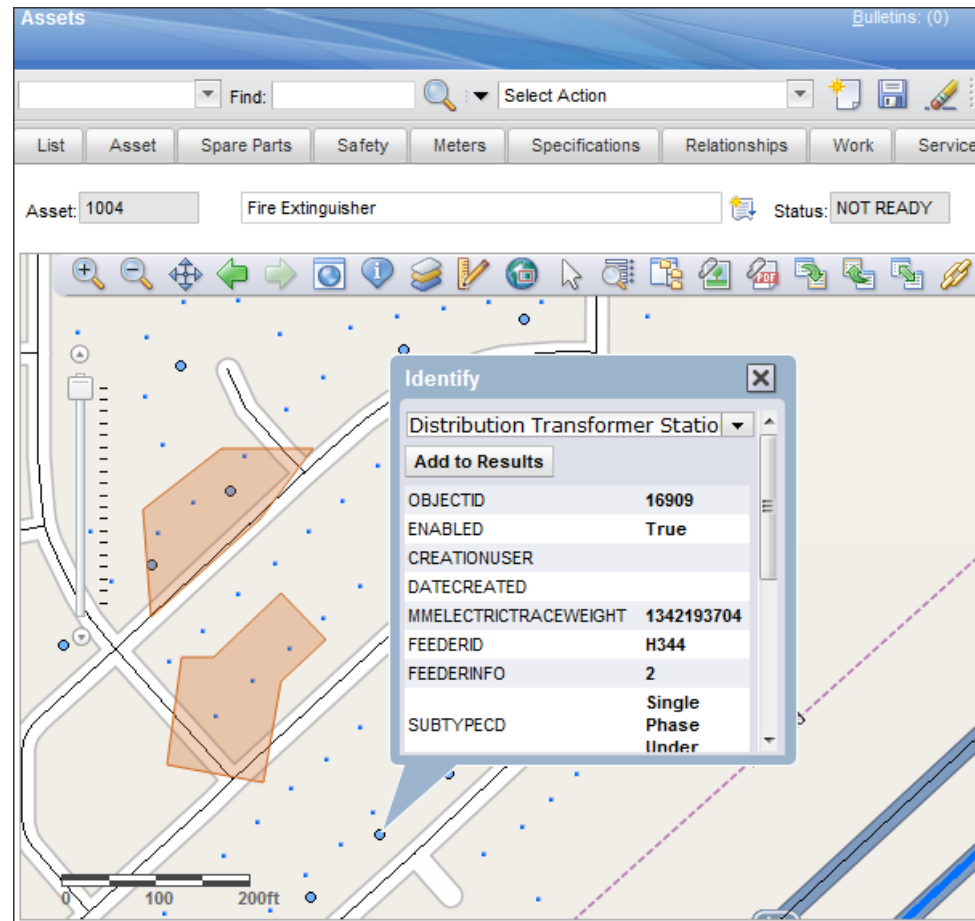
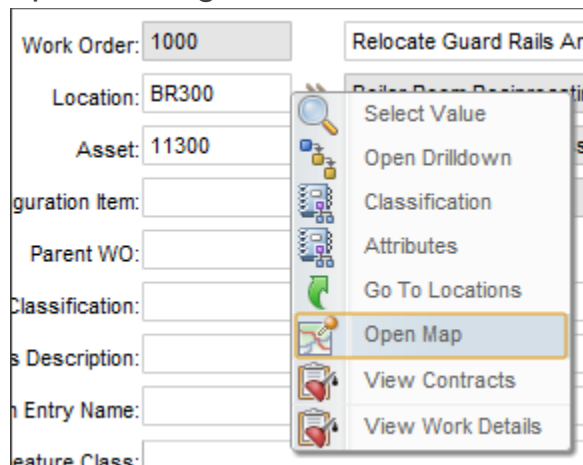


Delivering More Than Power.®



Maximo Spatial at a Glance

- Maps on Asset, Location, Service Request, Work Order and Service Address applications.
- Redlining, selection and query by attributes tools
- Maps configurable per Maximo site
- Multiple geodatabases support
- Security for map editing and visualization
- Enhances Maximo work flows, open map from data fields
- Tools for quick configuration and troubleshooting



Capable of Supporting all Industry Solutions

Maximo Asset Management, Utilities and Oil & Gas built specifically to consume Spatial Asset Management



Support Work and Asset Management for Organizations with Geographically Dispersed Assets

- Delivers an integration framework based upon ESRI ArcGIS Server Technology that support future product development and customer extensions.
- Expose GIS Data to Maximo users and detailed Maximo work and asset business information to GIS users.
- Visualize GIS Assets and provide a geospatial context of work, assets and relevant land based features which impact reliability, longevity, and efficient work execution.
- Create and manage work orders related to mass property: utility poles, assets, vegetation management, infrastructure repairs, etc.



Benefits of a single solution

- Access to geospatial data allows Service Management users to more easily and dynamically visualize the spatial relationships among managed assets and the roads, buildings, pipelines, and other mapped features around them, empowering levels of awareness and insight that tabular systems with dry numbers alone cannot provide
- Real-time integration of Maximo & ESRI's ArcGIS Server
- IBM has a long-time relationship with ESRI
 - Aligned vision technically
 - Sales and Implementation Support



Visualizing assets, locations, work orders, and service requests

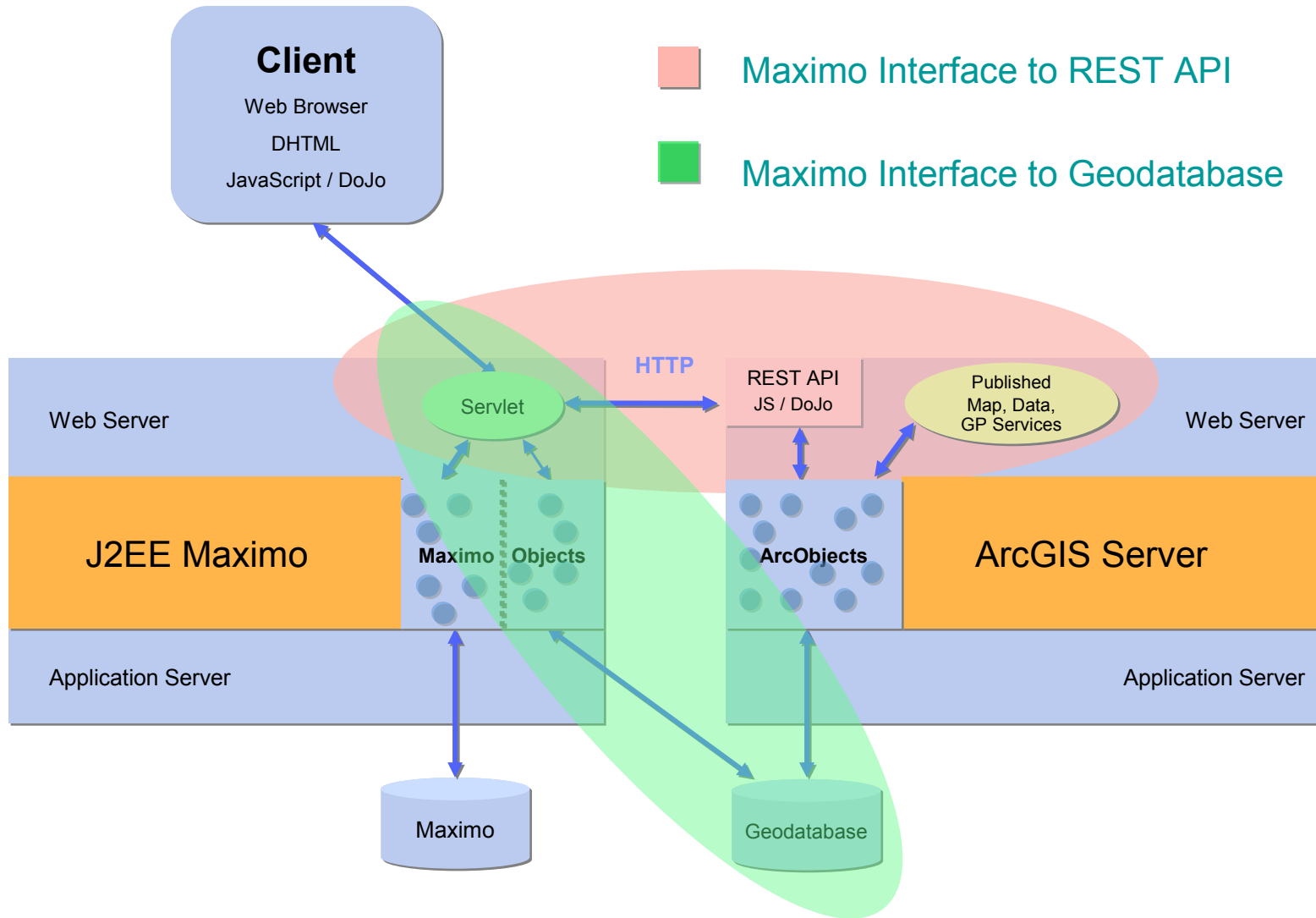
Maximo Spatial Asset Management extends the capabilities of the following IBM Maximo Asset Management applications by adding maps:

- Assets and Assets (T&D)
- Meter Assets (T&D)
- Locations
- Work Order Tracking and Work Order Tracking (T&D)
- Service Requests
- Service Address (Spatial)

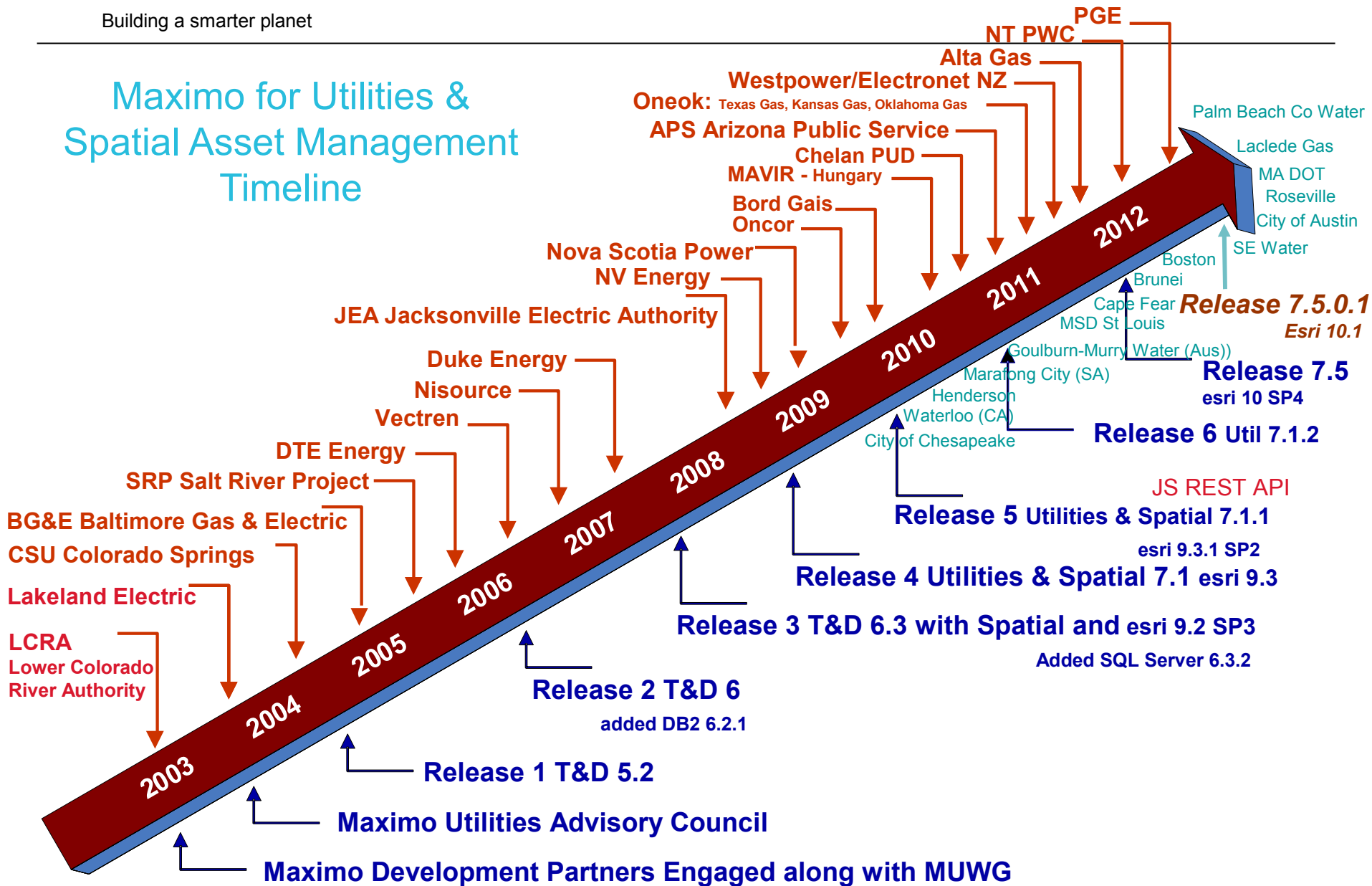
On the Map tab, or in map windows that are opened from application records, content from the production geographic information system (GIS) and from linked Maximo Asset Management records can be displayed.

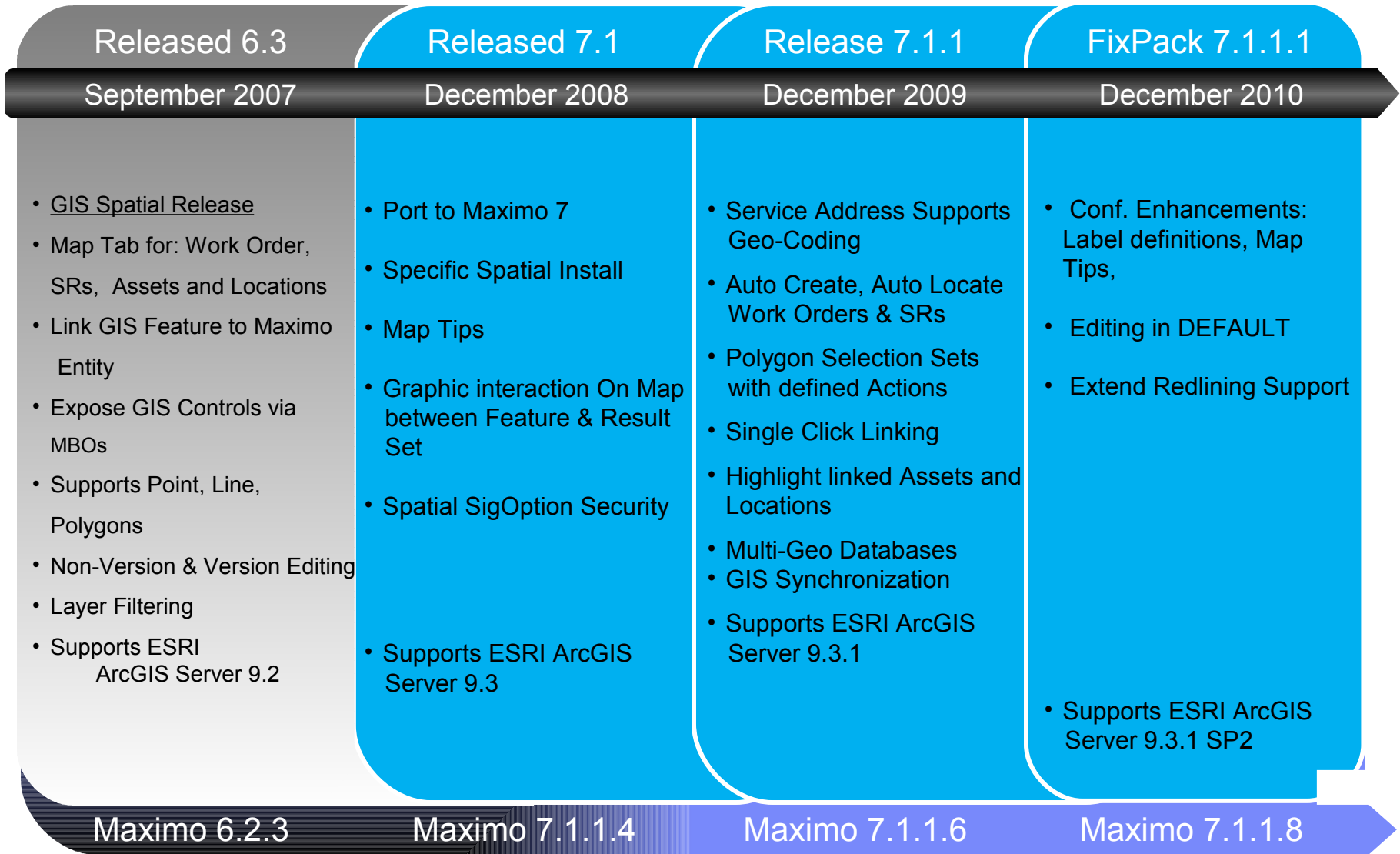
You can view assets in a geospatial context, so that you can easily and dynamically visualize the spatial relationships between your assets and the roads, buildings, pipelines, and other mapped features around them.

Maximo Spatial Architecture



Maximo for Utilities & Spatial Asset Management Timeline





Release 7.5	Fixpack 7.5.0.1	Scheduler 7.5.1	Release 7.Next
April 2011	July 2012	July 2012	TBD
<p><u>Support for EAM 7.5</u> and supporting products</p> <p><u>Supports Maximo Spatial 7.5*</u></p> <ul style="list-style-type: none"> • Extend Auto Create & Locate to Assets and Loc • Extend Map Tips – More links • Conf. Enhancements: Label definitions, Map Tips, • Editing in DEFAULT • Extend Redlining Support • Support Public Map Data • Supports ArcGIS Server 10 	<p><u>Accomodation Release Spatial</u></p> <ul style="list-style-type: none"> ▪ Migrate Service Address to Core Maximo ▪ Map Control, part of Core ▪ Moved to ESRI ArcGIS Javascript API version 2.8 ▪ Ability to add a map to any app., requires presentations changes & configuration defined on the wiki ▪ "Run Check Configuration" action now can be executed from Spatial Map Manager application ▪ Layer legends added to the "Map Contents" map widget ▪ Support for map scale bar, configured in Spatial Map Manager application ▪ Support for ESRI ArcGIS 10.1 and also support 10 	<p>Add-on Product*</p> <p><u>Maximo Scheduler Workforce Management Enhancements</u></p> <p>Dispatching Public Map UI Control Mobile Everyplace Applications Crew Management Service Address</p> <p>Graphical Assignment Schedule Compliance Assign other resources Work Order Actions</p> <p>* Sold as an Add-on to Maximo</p>	<p><u>Future Development Consideration:</u></p> <ul style="list-style-type: none"> ▪ Full integration with new SI Maps component ▪ ESRI cloud services support (WebMaps) ▪ Maximo Linear, Network Tracing and Analysis ▪ Analytics – Support geoprocessing tools (input, analyze, output) ▪ Geometric Network Trace, Routing and Clustering ▪ Simplify configuration process and more extensibility ▪ Feature layers and clustering ▪ Enhanced map editing ▪ Data synchronization ▪ Vegetation Management with the use of Spatial ▪ Interoperability (GE Smallworld, Intergraph...)
Maximo 7.5	Maximo 7.5.0.3	Maximo 7.5.0.3	

Notice: IBM's statements regarding its plans, directions, and intent are subject to change or withdrawal at IBM's sole discretion. Information regarding potential future products is intended to outline our general product direction and it should not be relied on in making a purchasing decision. The information mentioned regarding potential future products is not a commitment, promise, or legal obligation to deliver any material, code or functionality. Information about potential future products may not be incorporated into any contract. The development, release, and timing of any future features or functionality described for our products remains at our sole discretion.

Spatial 7.5.0.1 Scope

Added support for ESRI ArcGIS 10.1. ArcGIS 10 is still supported.

ArcGIS 10 – Service packs 1 to 4. Service pack 5 is being certified

ArcGIS 10.1 – Service pack 1 is being certified

Moved to ESRI ArcGIS Javascript API version 2.8

Layer legends added to the "Map Contents" map widget

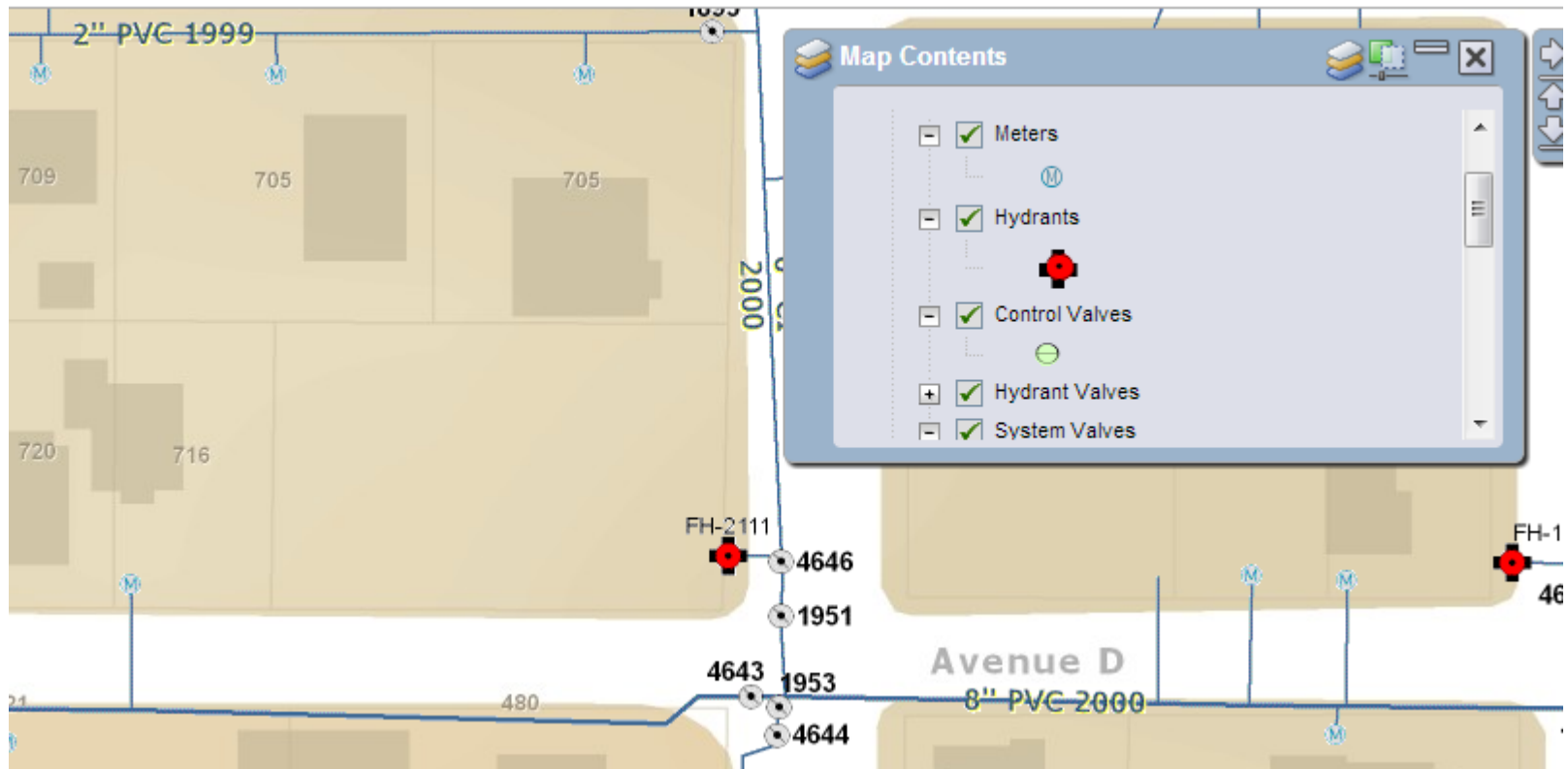
Identify tool performance improved. Now Identify tool does not retrieve the feature geometries if not needed.

Support for map scale bar. Can be configured in Spatial Map Manager application.

The default visibility of the map services can be configured inside Maximo in the Map Manager application.

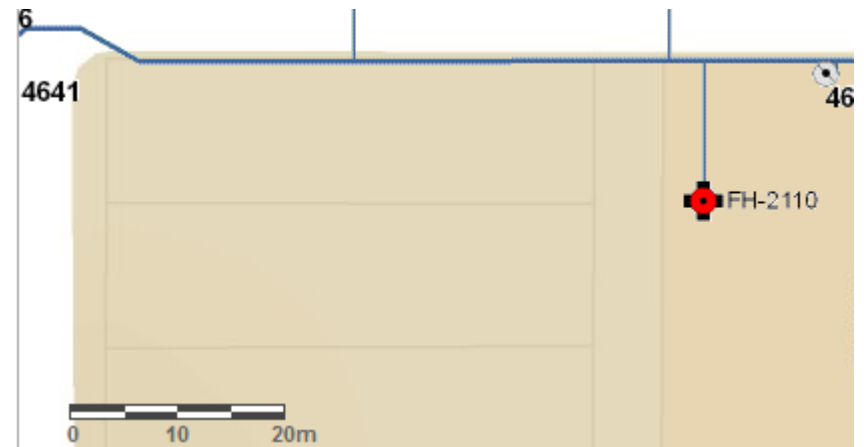
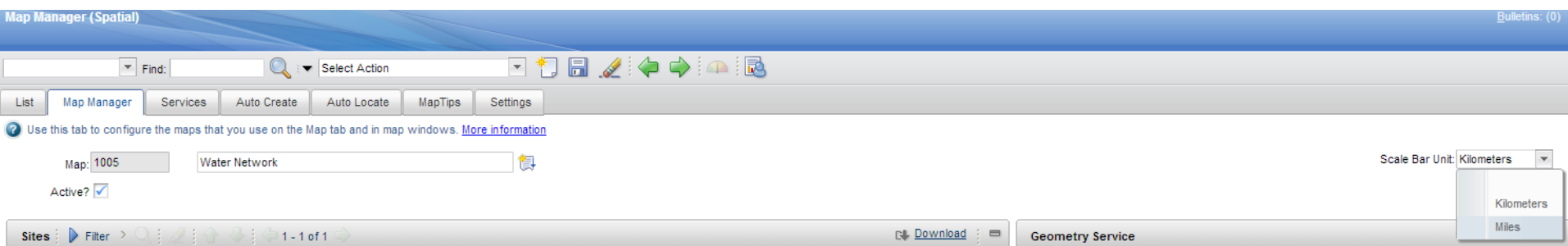
Spatial 7.5.0.1 Scope

Layer Legend



Spatial 7.5.0.1 Scope

Map scale bar



Spatial 7.5.0.1 Scope

Configure default map service visibility

Layer visibility can be configured in the MXD file

Details

* Name:

* URL:

* Order:

* % Transparency:

Visible?

Spatial 7.5.0.1 Scope

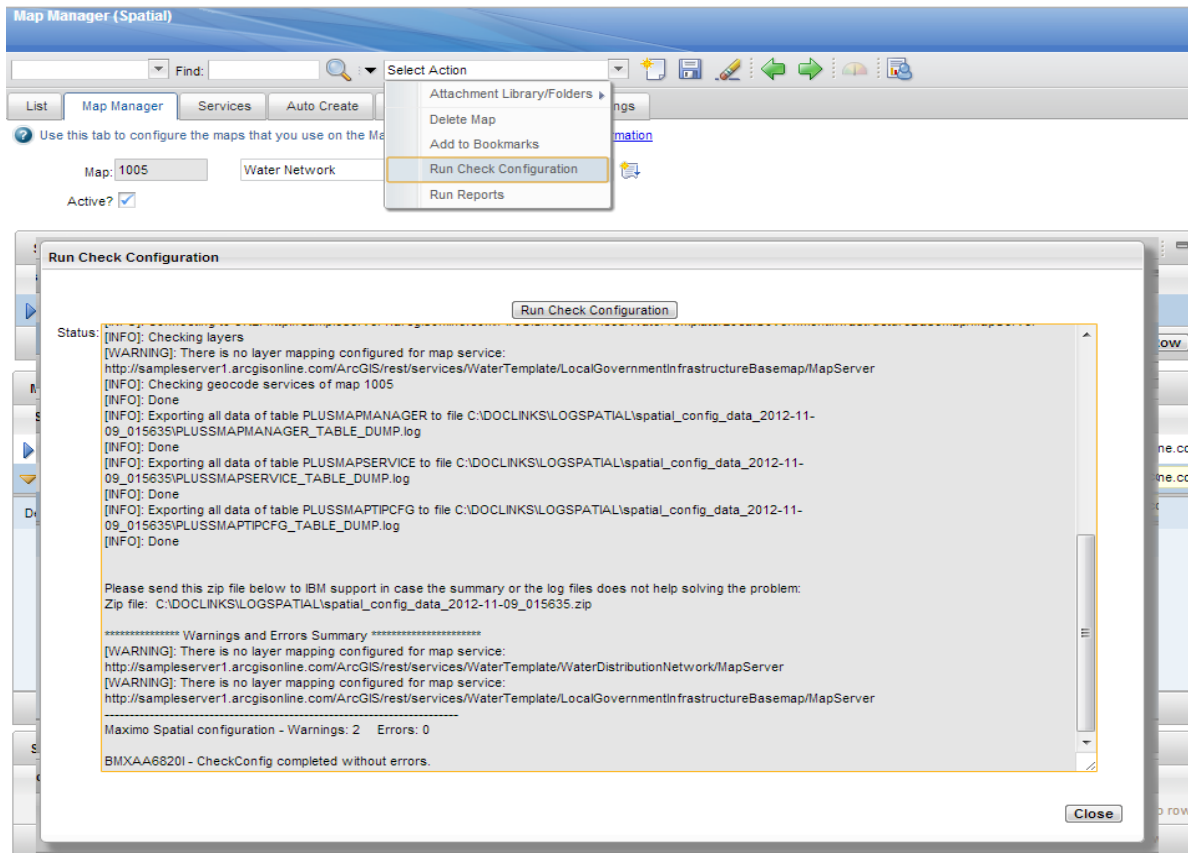
"Run Check Configuration" action now can be executed from Spatial Map Manager application

Spatial database configuration tool to bypass the use of Database Configuration application, so to simplify the object creation for multiple feature class tables.

<http://ibm.co/TwurH9>

Spatial 7.5.0.1 Scope

Run Check Configuration



Spatial 7.5.0.1 Scope

Spatial database configuration

```
C:\spatial\tools\maximo\spatial>spatialconfig.bat
Spatial Config DB Tool
? If you want to cancel type Ctrl/C to close the tool.
?
? Otherwise,
? Press ENTER to continue . . .

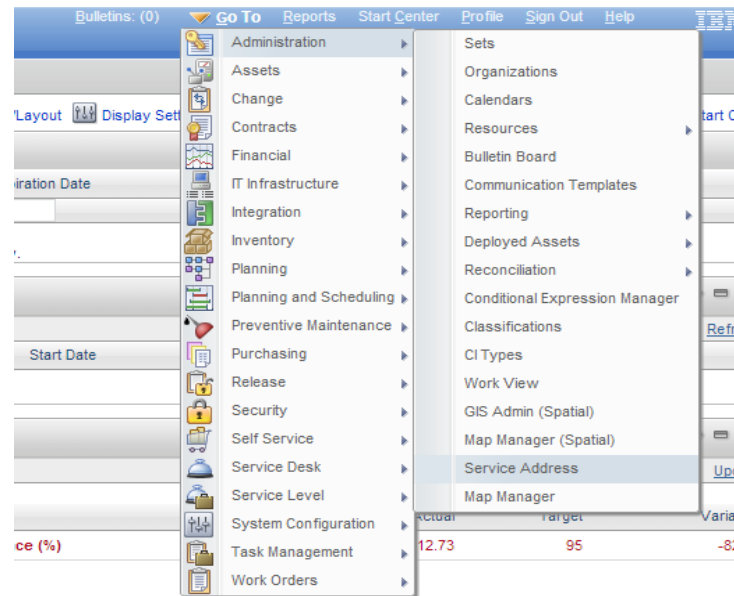
--- Starting mode ---
Fri Nov 09 02:16:55 BRST 2012BMXAA6806I - Reading the properties file maximo.properties.
BMXAA6818I - SpatialConfig started for schema MAXIMO, connected to database jdbc:oracle:thin:@localhost:1521:maximo Fri Nov 09 02:16:59 BRST 2012
--- Mode: ALL ---
```

Spatial 7.5.0.1 Scope

Migration to use the new Service Address functionality on TPAE 7.5.0.3.

All Service Address data is migrated automatically from the old Spatial Service Address tables to the new Service Address tables

All configuration related to Service Address is automatically migrated.



Spatial 7.5.0.1 Scope

Spatial cron task now works for service address records

Spatial cron task now supports feature records with just the one of the link attributes set.

Spatial cron task extension point method added to `psdi.pluss.app.plussgis.PlusSAssetLocFeatureLinkCronTask` class.

This method is called for every record the cron task processes.

Method signature: `protected void updateRecord(MboRemote mxRecord, MboRemote gisRecord, Map<String, String> mapping) throws Exception`

Spatial 7.5.0.1 Scope

Fixed issues

11-14336 => When you try to save a record with new or updated map features, an error message is displayed in the log files.

11-16034 => The Spatial Check Configuration tool was created to identify configuration problems when installing Maximo Spatial and to integrate it to the existing GIS database.

11-13653 => Installing Spatial on Maximo 7.5 throw SQL Exception when running updatedb in SQL Server 2008 and DB2: Cannot insert duplicate key row in object 'dbo.crontaskparam' with unique index 'crontaskparam_ndx'.

11-13690 => When you search for an address and click highlighted graphics after selecting a polyline or a polygon, the map breaks before showing the maptips.

11-14133 => If a feature class is configured with a storage type that is different than the ones specified in the documentation, you cannot link or unlink map features with Maximo records.

11-14405 => When you try to print from the map tab using the Print icon, all map layers appear in the image, even if some of them are not supposed to be visible.

11-15392 => In the Work Order application, if you change the service address relationship to a feature class that does not include the siteid, the auto-create work order functionality does not work.

12-10461 => CLIENT EXTENSIONS TO MAXIMO FIELD CLASSES ARE OVERRIDEN WHEN SPATIAL PRODUCT IS INSTALLED

Spatial version matrix

Maximo Spatial version	Maximo Asset Management version
7.5.0.1	7.5.0.3
7.5.0.0	7.5.0.2 7.5.0.1 7.5.0.0
7.1.1.1	7.1.1.9 7.1.1.8 7.1.1.7 7.1.1.6
7.1.1.0	7.1.1.6
7.1.0.1	7.1.1.4
7.1.0.0	7.1.1.4
6.3.3	6.2.3

Useful links

Maximo Spatial wiki page

<http://www.ibm.com/developerworks/wikis/display/maximo/Spatial+Asset+Management>

Tivoli RFE Community

http://www.ibm.com/developerworks/rfe/?BRAND_ID=90

Questions & Answers



Terry L. Saunders

Worldwide Utilities Industry Leader
E&U, Energy & Utilities
Tivoli Maximo Development

terry.saunders@us.ibm.com

550 King Street
Building LKG1 – A2523D
Littleton, MA. 01460 6245
USA, (Boston Area)
Tel +1 978 899 2627
Mobile 1 617 513 0347



Thank you!

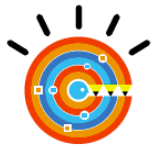


João Souto Maior

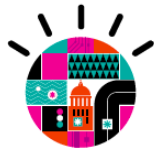
GIS and Mapping Architect - IBM

Rua Engenheiro
Francisco De Pitta
Building B91 Fl 09 Of DM7
SÃO PAULO, Brazil

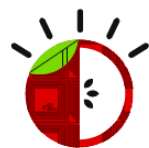
55-11-2927-1268
jmaior@br.ibm.com



Education



Government



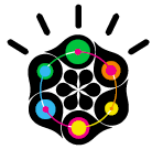
Food



Cloud Computing



Cities



Oil



Energy



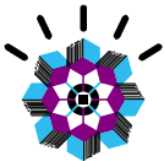
Public Safety



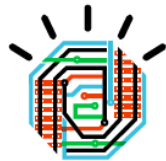
Telcom



Healthcare



Products



Rail



Infrastructure



Intelligence



Work



Buildings



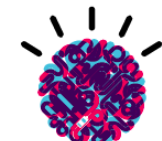
Banking



Retail



Water



Traffic



Let's build a smarter planet.